



SSV WORKS RZ4-2KRC Polaris RZR XP Turbo S 2 Speaker Kit User Guide

[Home](#) » [SSV WORKS](#) » SSV WORKS RZ4-2KRC Polaris RZR XP Turbo S 2 Speaker Kit User Guide 

Contents

- [1 SSV WORKS RZ4-2KRC Polaris RZR XP Turbo S 2 Speaker Kit](#)
- [2 TOOLS NEEDED FOR INSTALLATION](#)
- [3 PARTS LIST IMAGES](#)
- [4 PANELS AND DASH DISASSEMBLY](#)
- [5 RUNNING WIRING AND CABLES](#)
- [6 AMP TRAY INSTALLATION](#)
- [7 PARTS LIST IMAGES](#)
- [8 CONNECTING POWER & GROUND CABLE TO BATTERY](#)
- [9 ANTENNA RELOCATION \(IF EQUIPPED\)](#)
- [10 Documents / Resources](#)
- [11 Related Posts](#)



SSV WORKS RZ4-2KRC Polaris RZR XP Turbo S 2 Speaker Kit



WARRANTY INFORMATION:

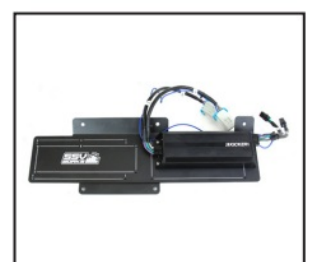
All SSV Works enclosures are covered by a limited lifetime warranty against defects in material or workmanship. All SSV Works Electronics are covered by a limited 1 year warranty against defects in material or workmanship. All Kicker Speakers are covered by a limited 1 year warranty against defects in material or workmanship. All Kicker Amplifiers are covered by a limited 2 year warranty against defects in material or workmanship. Labor for replacement of defective components is not covered. Contact SsV Works for further warranty information.

Note: Please read and understand these instructions completely before installation to avoid possible injury, or damage to the accessory or vehicle.

TOOLS NEEDED FOR INSTALLATION

- T30 & T40 Torx Socket
- 10mm and 5.5mm Socket & Ratchet or Wrench
- 4mm & 5mm Allen Wrench
- #2 & #3 Phillips Screwdriver
- Drill with 13/64", 1/8", 1/4" & 1/2" Drill bits
- Panel removal tool
- Wire Crimpers
- Wire Strippers
- Scribe or Marker
- Utility Knife

PARTS LIST IMAGES



1. Amp Power Wire
2. Front B-H1149 Speaker Wire
3. Rear B-H1151 Speaker Expansion
4. Amp Tray with pre-loaded Kicker Amplifier



5. Amp Tray Base Bracket
6. M6 x 1.0 Screws and Washers x 2
7. Self-Tapping Screw x 1
8. Zip Ties x 5

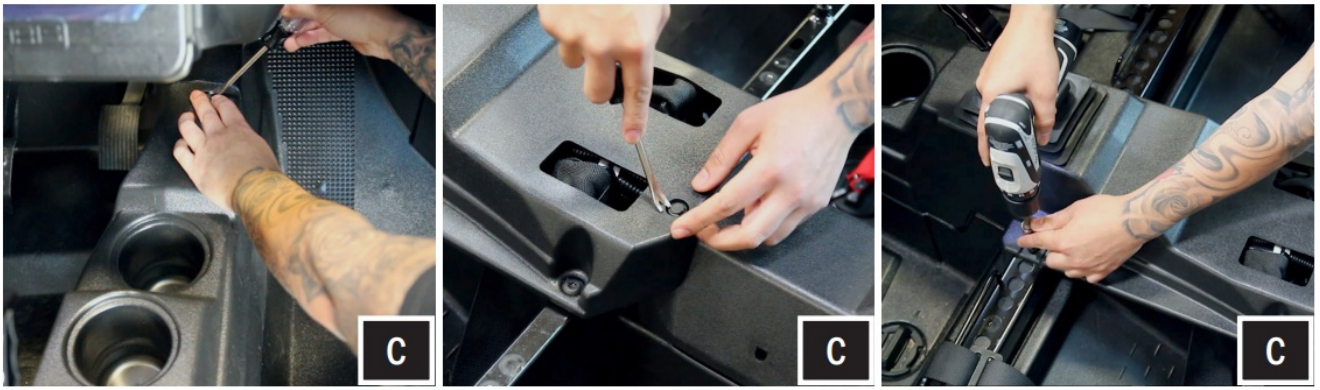


9. Fuse Holder with 40A Fuse
10. Battery Terminal Cable

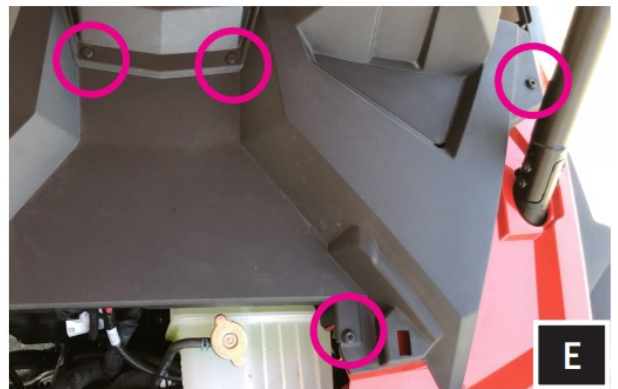
PANELS AND DASH DISASSEMBLY



- A. Remove driver seat by releasing the handle behind each seat,
- B. Disconnect the negative battery cable from the battery.



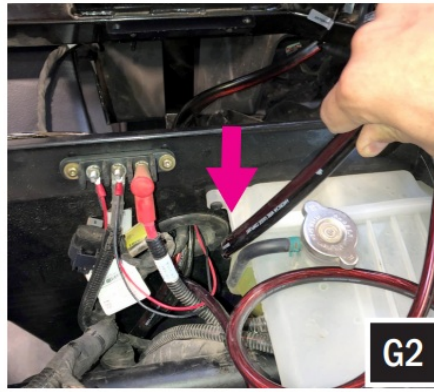
- C. Remove all of the center console push pins and T-30 Torx screws. For 4-seat models, disconnect the harness attached to the 12v accessory socket.
- D. Remove hood by turning locking pins and lifting up.
- E. Unscrew the (4) T40 torx screws (showing driver side only in image) and extract the (2) push pins from the dash. From inside the machine, pull dash towards you to unclip. Once unclipped remove the dash.



RUNNING WIRING AND CABLES

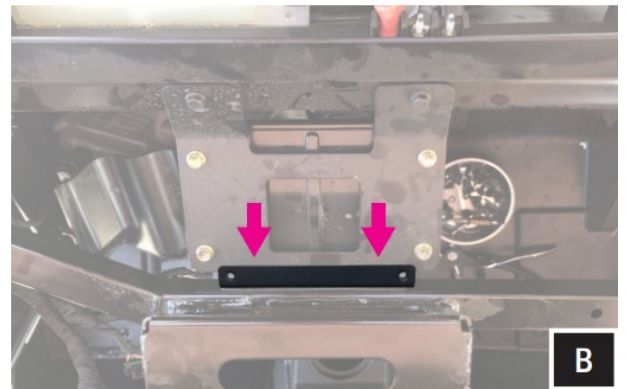
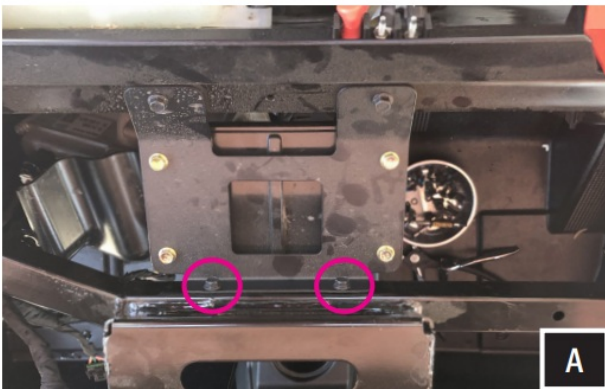


- F. Unwrap the tape and pull the rubber wire grommet out of the firewall.
- G. Starting from under the hood compartment, feed the connector of the power wire and B-H1151 rear harness female connector through the grommet into the dash cavity. In order to connect to the amplifier in a later step, pull about 18" of the amp power wire and B-H1151 into the dash cavity (G1). Route the additional length of the (ring terminal end) power/ground wire and B-H1151 down the exterior of the firewall along the factory wiring (G2). Pull the power/ground wire through to the center of the vehicle to the battery compartment. DO NOT CONNECT TO THE BATTERY (G3). B-H1151 will be used later for the cage mount speakers installation.

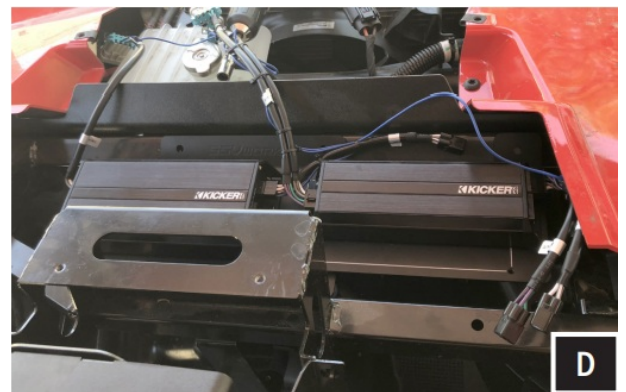
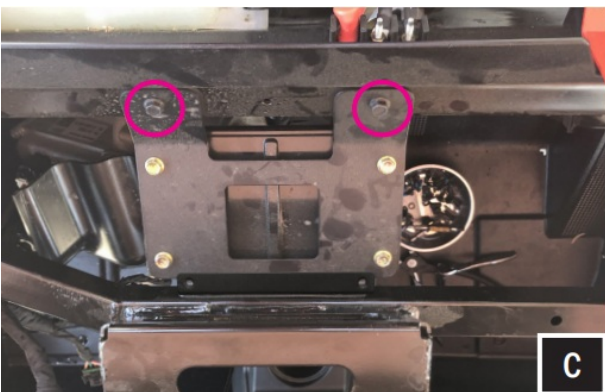


AMP TRAY INSTALLATION

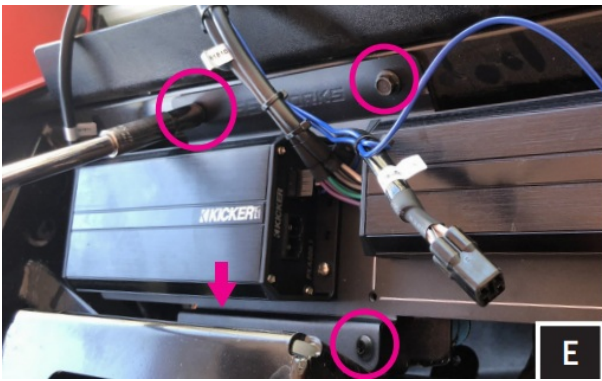
- A. Remove the (2) 10mm bolts circled in pink
- B. Place the amp tray base bracket at the location of the (2) removed factory 10mm bolts. Re-fasten the bolts through both the amp tray base bracket and factory plate to secure to the chassis.



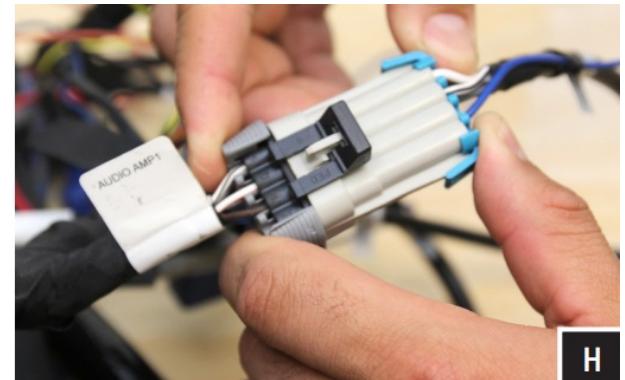
- C. Remove the (2) 10mm bolts circled in pink
- D. Place the amp tray into the mounting location by lining up the amp plate screw holes to the factory holes on the chassis.



- E. Secure the amp tray by using the two (2) 10mm factory bolts at the top, and two (2) T-30 torx bolts at the bottom mounting locations.
- F. Using a scribe or punch, mark the location of the needed pilot hole on the passenger side of the tray.



- G. With the correct location marked, uninstall the amp tray and use a 13/64" drill bit to drill your pilot hole. With your pilot hole drilled, reinstall the amp tray. Use the self-tapping screw in the drilled hole location.
- H. Connect the amplifier "Front Input" to the Ride Command "Audio Amp 1" factory harness. Connect the amplifier "Rear Input" for rear speakers to "Audio Amp 2" factory harness.

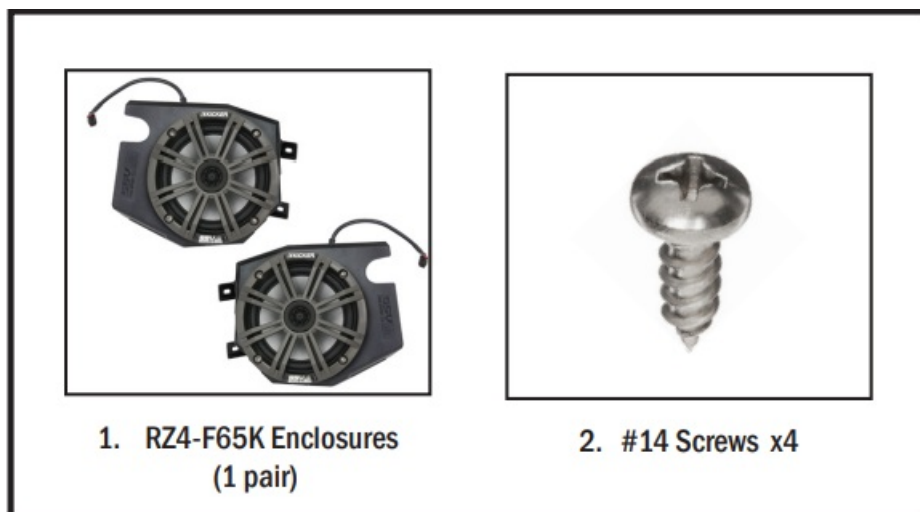


WARRANTY INFORMATION:

All SSV Works enclosures are covered by a limited lifetime warranty against defects in material or workmanship. All SSV Works Electronics are covered by a limited 1 year warranty against defects in material or workmanship. All Kicker Speakers are covered by a limited 1 year warranty against defects in material or workmanship. All Kicker Amplifiers are covered by a limited 2 year warranty against defects in material or workmanship. Labor for replacement of defective components is not covered. Contact SSV Works for further warranty information.

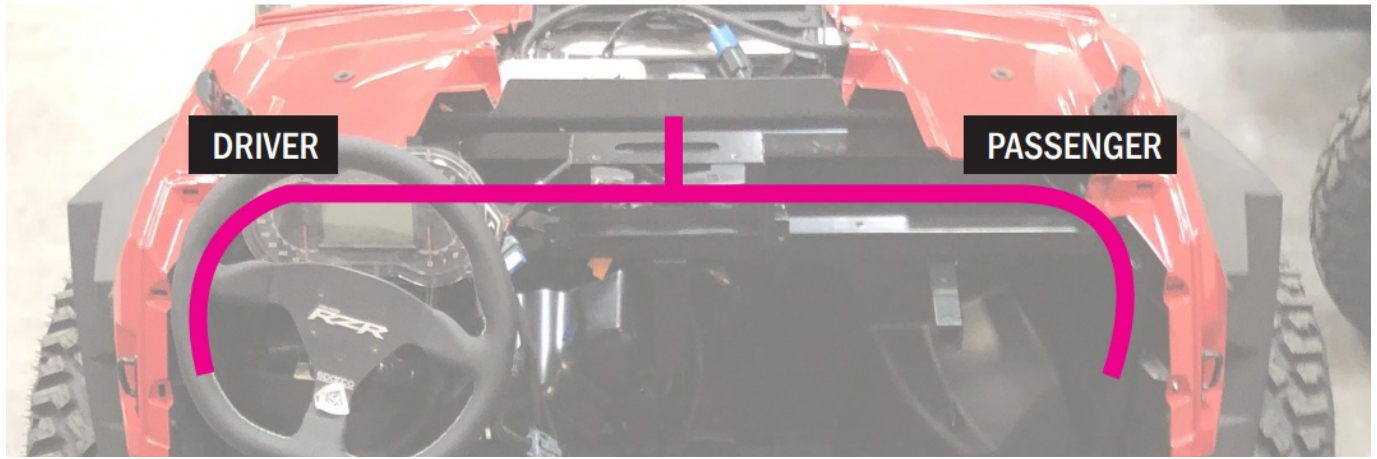
Please Note: Please read and understand these instructions completely before installation to avoid possible injury, or damage to the accessory or vehicle.

TOOLS NEEDED FOR INSTALLATION



- T-40 Torx Driver
- #2 Phillips Screwdriver

PARTS LIST IMAGES



Route the B-H1149 across the dash cavity. The cable marked as “DRIVER” will route under the dash and down to the driver side footwell, the cable marked “PASSENGER” will route over the top and down the right side of the factory glovebox.

- A. Starting at driver side footwell, remove the factory T40 torx screw as shown. Save this screw for Step D.
- B. Place the driver kick pod into location so that both vehicle screw bosses line up with kick pod brackets.

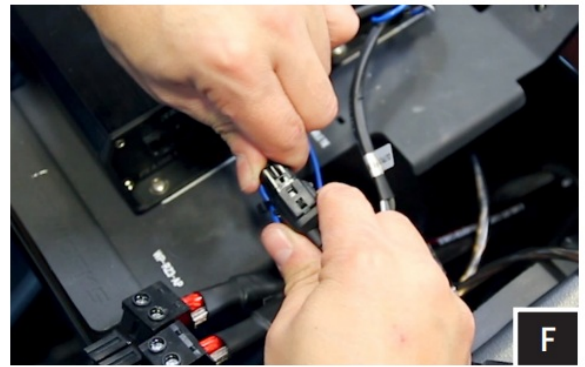
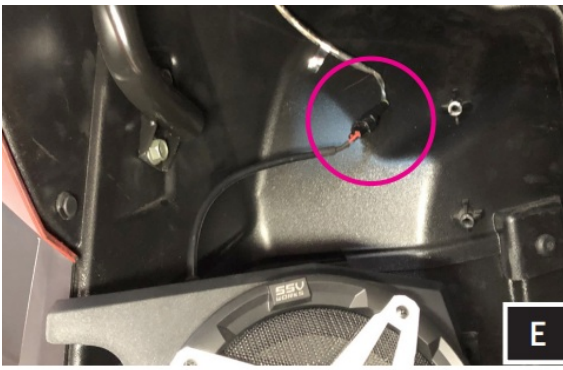


- C. Using (2) # 14 screw loosely secure the kick pod to the factory screw bosses.
- D. Re-use the factory T40 torx screw previously removed in Step A to loosely bolt through the lower kick pod bracket to vehicle panel.

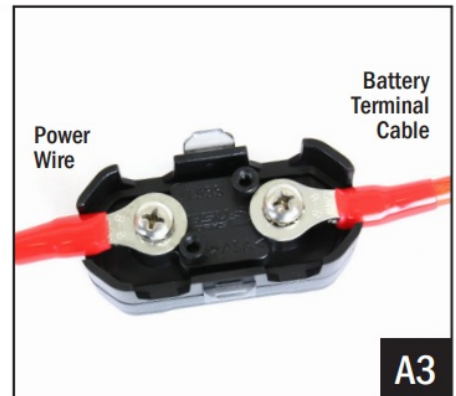
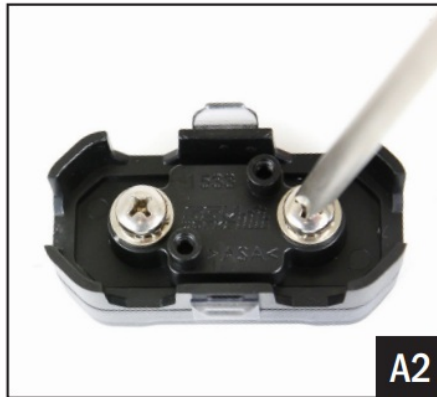
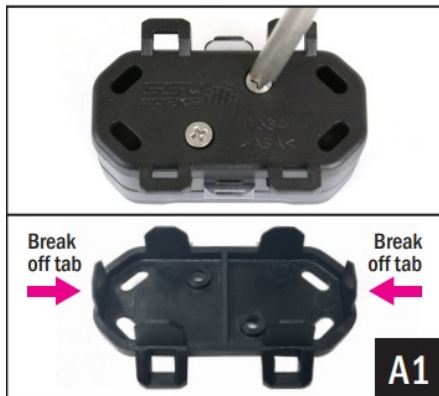


Once all three screws are in place go back and re-tighten.

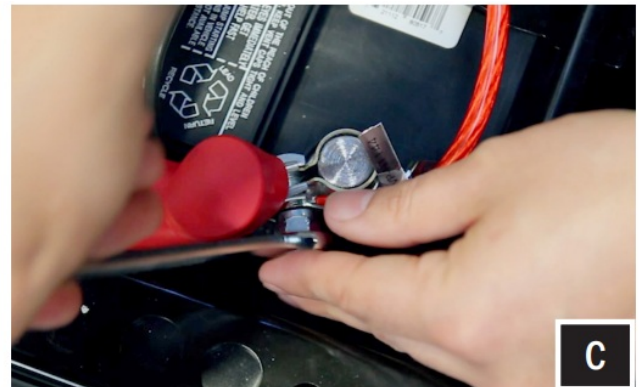
- E. Connect the B-H1149 cable to the speaker pod and zip tie all cables to the frame.
- F. Connect the B-H1149 speaker harness to the 300.4 amplifier front output.



CONNECTING POWER & GROUND CABLE TO BATTERY



- A1. Remove the bottom cover of the fuse holder by extracting the 2 screws. Break off the right and left side tabs on the bottom cover.
- A2. Extract both fuse holder screws.
- A3. Attach both the Power Wire and Battery Terminal Cable to the fuse holder. Reattach the bottom cover.



- B. Unscrew the factory nut on the negative battery terminal. Install the 2 ground cables to the screw on the ground battery terminal. Re-install the factory nut.
- C. Unscrew the factory nut on the positive battery terminal. Install the 2 power cables to the screw on the positive battery terminal. Re-install the factory nut.
- D. Remove the top of the fuse holder and extract the 2 screws. Insert the 40A fuse, screw the 2 screws back in and reattach the fuse holder top.



- E. Zip tie all of the electrical cabling (factory and audio) along the center column away from the drive shaft.

ANTENNA RELOCATION (IF EQUIPPED)

If your vehicle is equipped with a V2V antenna (Photo A) we recommend relocating antenna underneath the hood in front of the radiator (Photo C) to avoid amplifier interference.



LOOKING FOR MORE SOUND?

TRY SSV WORKS CAGE MOUNT 6.5" SPEAKER PODS!

SSV Works custom molded Cage Mount Pods are designed for 6.5" speakers and can be used when you need more sound in your Side by Side. Unlike wakeboard towers, these mini pods are designed to provide sound to the passengers without blocking visibility. They are 100% fiberglass for the best sound quality and bass response. They are finished in a black texture coat to match factory interior textures and can be custom painted to match your color scheme. – Includes the versatility of Axia Alloys patented clamping system and stainless mounting

hardware. Even better, they can be loaded with either Kicker or SSV Works powersports 6.5" speakers.



Call 818-991-1778 to order yours today!
Part Number US2-C65-K

Documents / Resources



[SSV WORKS RZ4-2KRC Polaroid RZR XP Turbo S 2 Speaker Kit](#) [pdf] User Guide
RZ4-2KRC Polaroid RZR XP Turbo S 2 Speaker Kit, RZ4-2KRC, Polaroid RZR XP Turbo S 2 Speaker Kit, 2 Speaker Kit, Polaroid RZR XP Turbo Speaker Kit