




SSV WORKS RZ34-Q3K3 RZR 3 and RZR 4 Kicker 3 Speaker Audio Kit Instruction Manual

[Home](#) » [SSV WORKS](#) » SSV WORKS RZ34-Q3K3 RZR 3 and RZR 4 Kicker 3 Speaker Audio Kit Instruction Manual 



RZ34-Q3K3
RZR 3 and RZR 4
Kicker 3 Speaker Audio Kit
Phase 3

Contents

- [1 RZ34-Q3K3 RZR 3 and RZR 4 Kicker 3 Speaker Audio Kit](#)
- [2 PANELS AND DASH DISASSEMBLY \(RZR3\)](#)
- [3 GLOVE BOX SUBWOOFER ENCLOSURE \(RZR3\)](#)
- [4 AMP PLATE INSTALLATION](#)
- [5 FRONT KICK PANELS \(ALL MODELS\)](#)
- [6 DASH KIT FOR MRB3 \(RZR3\)](#)
- [7 Documents / Resources](#)
 - [7.1 References](#)
- [8 Related Posts](#)

RZ34-Q3K3 RZR 3 and RZR 4 Kicker 3 Speaker Audio Kit

RED**RZR3 2014-2018****BLUE****RZR4 2019+**

FOLLOW THE COLOR CODE ON EACH STEP FOR YOUR VEHICLE'S SPECIFIC INSTRUCTIONS

PARTS LIST 1/5

Wiring Installation

WARRANTY INFORMATION:

All SSV Works enclosures are covered by a limited lifetime warranty against defects in material or workmanship. All SSV Works Electronics are covered by a limited 1-year warranty against defects in material or workmanship. All Kicker Speakers are covered by a limited 1-year warranty against defects in material or workmanship. All Kicker Amplifiers are covered by a limited 2-year warranty against defects in material or workmanship. Labor for the replacement of defective components is not covered. Contact SSV Works for further warranty information.



Please read and understand these instructions completely before installation to avoid possible injury or damage to the accessory or vehicle.

TOOLS NEEDED FOR INSTALLATION

- T30 & T40 Torx Socket
- 10mm and 5.5mm Socket & Ratchet or Wrench
- 4mm & 5mm Allen Wrench
- #2 & #3 Phillips Screwdriver
- Drill with 13/64", 1/8", 1/4" & 1/2" Drill bits
- Panel removal tool
- Wire Crimpers
- Wire Strippers
- Scribe or Marker
- Utility Knife

PARTS LIST IMAGES



1. Amp Power Wire x1



2. B-H1909 Front Speaker Wire



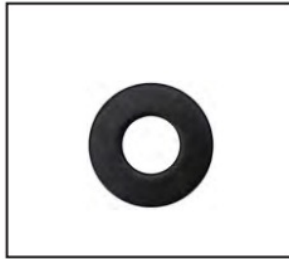
3. Amp Tray with pre-loaded PhaseEQ Amp and MRB3 brain



4. Amp Tray Base Brackets (Depending on model)



5. M6 x 1.0 Screws x 2 (T-30 torx)



6. M6 Washers x 7



7. Thread Cutting Screw x 5 (#3 Phillips)



8. Fuse Holder with 40A Fuse x 1



9. Battery Terminal Cable x 1



10. MRB3 Power & Ground Connector




11. Zip Ties

PARTS LIST 2/5

Glove Box Subwoofer Enclosure

WARRANTY INFORMATION:

All SSV Works enclosures are covered by a limited lifetime warranty against defects in material or workmanship. All SSV Works Electronics are covered by a limited 1-year warranty against defects in material or workmanship. All Kicker Speakers are covered by a limited 1-year warranty against defects in material or workmanship. All Kicker Amplifiers are covered by a limited 2-year warranty against defects in material or workmanship. Labor for the replacement of defective components is not covered. Contact SSV Works for further warranty information.

 Please read and understand these instructions completely before installation to avoid possible injury or damage to the accessory or vehicle.

TOOLS NEEDED FOR INSTALLATION

- 10mm & 8mm Socket
- Ratchet & Extension
- T-30 & T-40 Torx Driver
- #3 Phillips Screwdriver
- #2 Phillips Screwdriver
- Panel removal tool

PARTS LIST IMAGES



1. RZ4-GB10K Enclosure
(door not included)



2. 8mm Socket Head Screws &
Washers x14



3. Glove Box Door Bracket



4. Lower Mounting Bracket
with #14 Screw x1 each



5. Flat Mounting Bracket "A"



6. Mounting Bracket "B"



7. Left & Right Door Hinge
Brackets



8. M6 x 8mm (T30 torx) Screw
x2



9. M6 x 16mm Screws x 11
(Long)



10. M6 x 8mm Screws x 2
(Short)



11. "L" Bracket x 1



12. Glove Box Door
Bracket x 1

PARTS LIST 3/5

Kicker 6.5" Speaker Front Kick Panels

WARRANTY INFORMATION:

All SSV Works enclosures are covered by a limited lifetime warranty against defects in material or workmanship. All SSV Works Electronics are covered by a limited 1-year warranty against defects in material or workmanship. All Kicker Speakers are covered by a limited 1-year warranty against defects in material or workmanship. All Kicker Amplifiers are covered by a limited 2-year warranty against defects in material or workmanship. Labor for the replacement of defective components is not covered. Contact SSV Works for further warranty information.



Please read and understand these instructions completely before installation to avoid possible injury or damage to the accessory or vehicle.

TOOLS NEEDED FOR INSTALLATION

- T-40 Torx Driver
- #2 Phillips Screwdriver

PARTS LIST IMAGES



**1. RZ4-F65K Enclosures
(1 pair)**




2. #14 Screws x4

PARTS LIST 4/5

MRB3 Dash Kit for RZ3

WARRANTY INFORMATION:

All SSV Works enclosures are covered by a limited lifetime warranty against defects in material or workmanship. All SSV Works Electronics are covered by a limited 1-year warranty against defects in material or workmanship. All Kicker Speakers are covered by a limited 1-year warranty against defects in material or workmanship. All Kicker Amplifiers are covered by a limited 2-year warranty against defects in material or workmanship. Labor for the replacement of defective components is not covered. Contact SSV Works for further warranty information.

 Please read and understand these instructions completely before installation to avoid possible injury or damage to the accessory or vehicle.

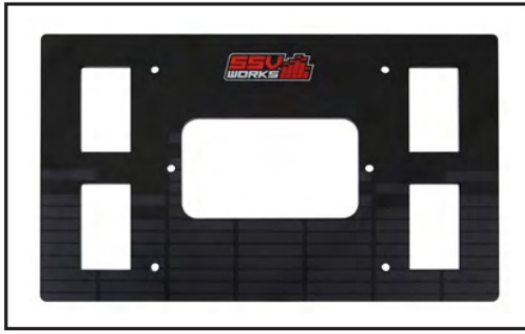
TOOLS NEEDED FOR INSTALLATION

- #2 Phillips Screw Driver
- T40 Torx Socket
- 10mm Socket & Ratchet
- 5.5mm Socket & Ratchet

PARTS LIST

1. RZ3 Dash Panel x1
2. Mounting Brackets x2
3. M3 Screw x6
4. M3 Hex Nut x2
5. M3 Washer x2
6. Blank Rocker Switches x4

PARTS LIST IMAGES



1. RZ3-DM3 Base Plate



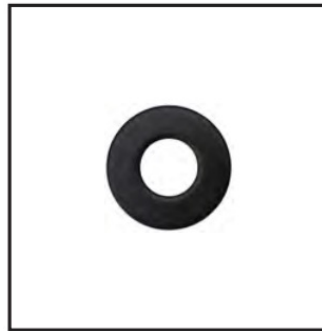
2. Mounting Brackets



3. M3 Screw x6



4. M3 Hex Nuts x 2



5. M3 Washers x 2



5. Blank Rocker Switches x4

INSTALLATION NOTES


For instructions regarding the MRB3 black box, refer to the MRB3 manual.

PARTS LIST 5/5

MRB3 Dash Kit for RZ4

WARRANTY INFORMATION:

All SSV Works enclosures are covered by a limited lifetime warranty against defects in material or workmanship. All SSV Works Electronics are covered by a limited 1-year warranty against defects in material or workmanship. All SSV Works Speakers are covered by a limited 1-year warranty against defects in material or workmanship. Labor for the replacement of defective components is not covered. Contact SSV Works for further warranty information.

 Please read and understand these instructions completely before installation to avoid possible injury or damage to the accessory or vehicle.

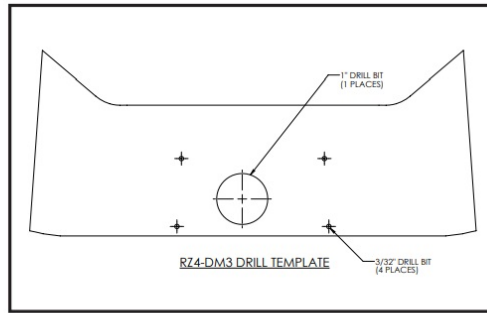
TOOLS FOR INSTALLATION

- Panel removal tool
- Drill -3/32" drill bit
- 1-1/8" drill bit
- #1 Phillips screwdriver – Scissors

PARTS LIST IMAGES



1. RZ4-DM3 Base Plate



2. RZ4-DM3 Drill Template



3. MRB3 dash screws x6

INSTALLATION NOTES

For instructions regarding the MRB3 brain, refer to the MRB3 manual.



A. Cut the template to size. Align the template onto the face of the compartment and tape the template into place. Prior to drilling, place the DM3 over the template to verify the proper alignment of the template.



PANELS AND DASH DISASSEMBLY (RZR3)



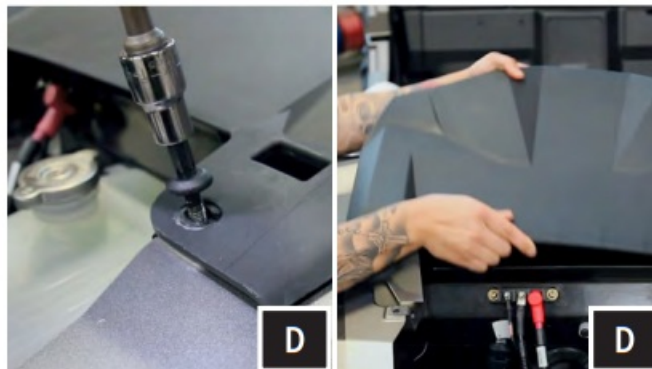
A. Remove all seats by releasing the handle behind each seat, push forward slightly while lifting up.



B. Disconnect the negative battery cable from the battery.



C. Remove hood by turning locking pins and lifting up.



D. Remove center dash by unscrewing the 2 T-30 Torx screws and push center dash forward to unclip.



E. Disconnect all harness connectors attached to the center dash panel.



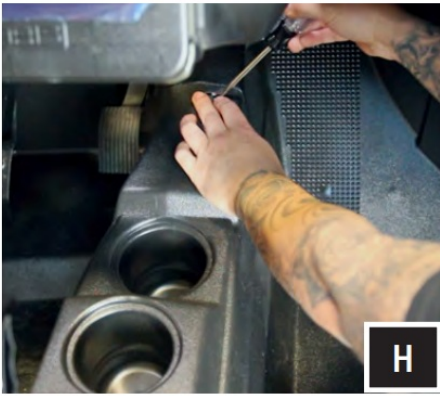
F. Un-pin and pull to remove the passenger side safely handle.



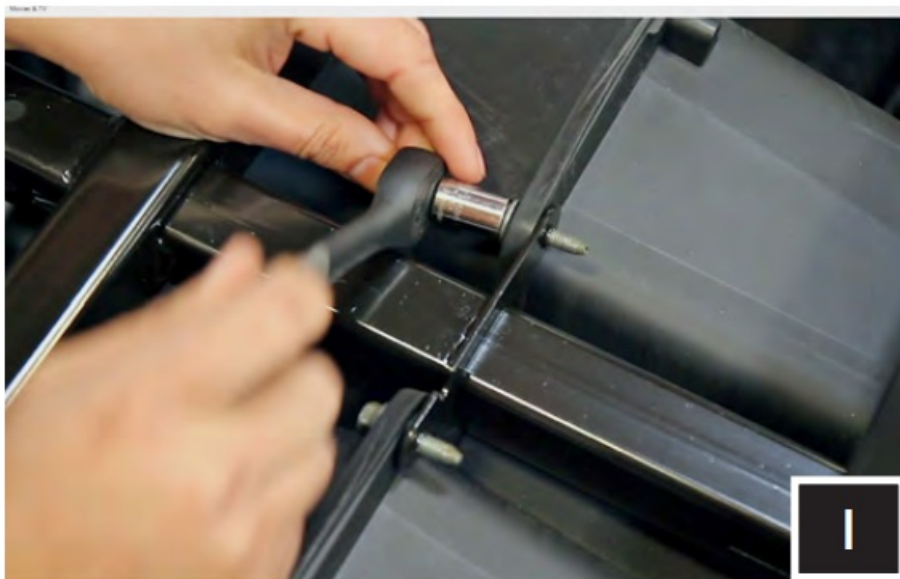
G. Remove the factory dash pocket by first extracting the 10mm bolt on the dash frame (G1). Then pull out the dash pocket with the bracket attached (G2) –

NOTE this bracket will no longer be used for any part of this installation. Save this screw as it will be used later

during the amp plate installation. Extract (2) screws securing the sub dash (G3). Unsnap and remove.



H. Remove all of the center console push pins and T-30 Torx screws. For 4-seat models, disconnect the harness attached to the 12v accessory socket.



I. Remove the glovebox by removing (2) 10mm screws.

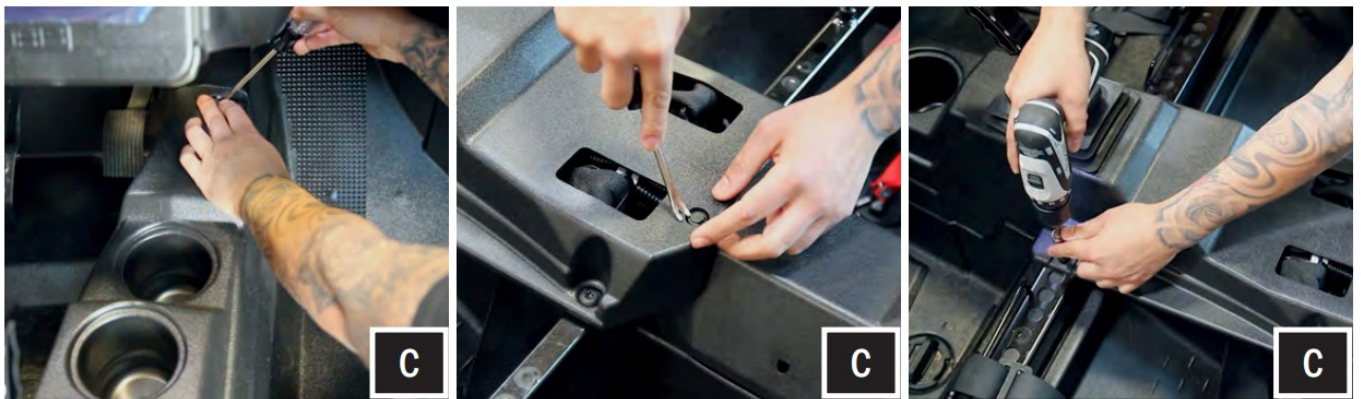


A. For ease of installation, remove all seats by releasing the handle behind each seat, and push forward slightly

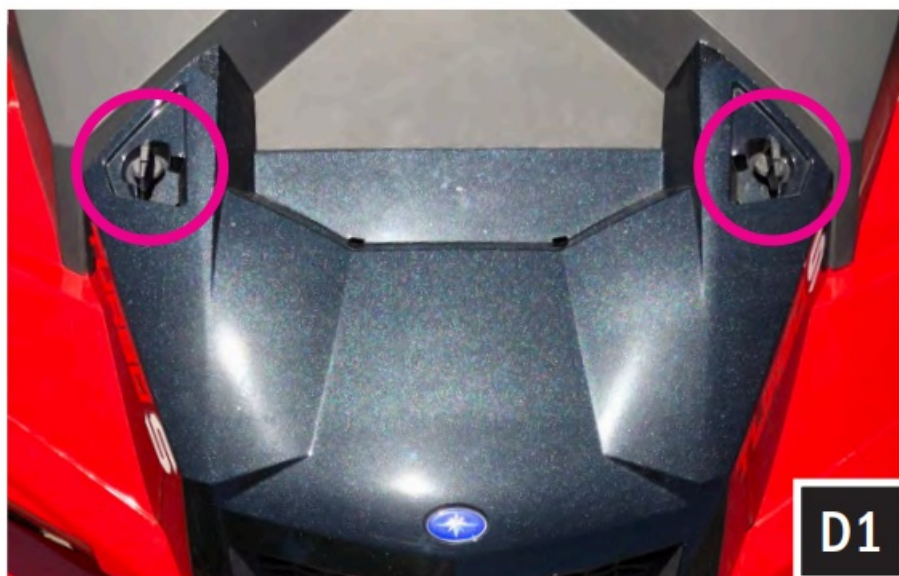
while lifting up.



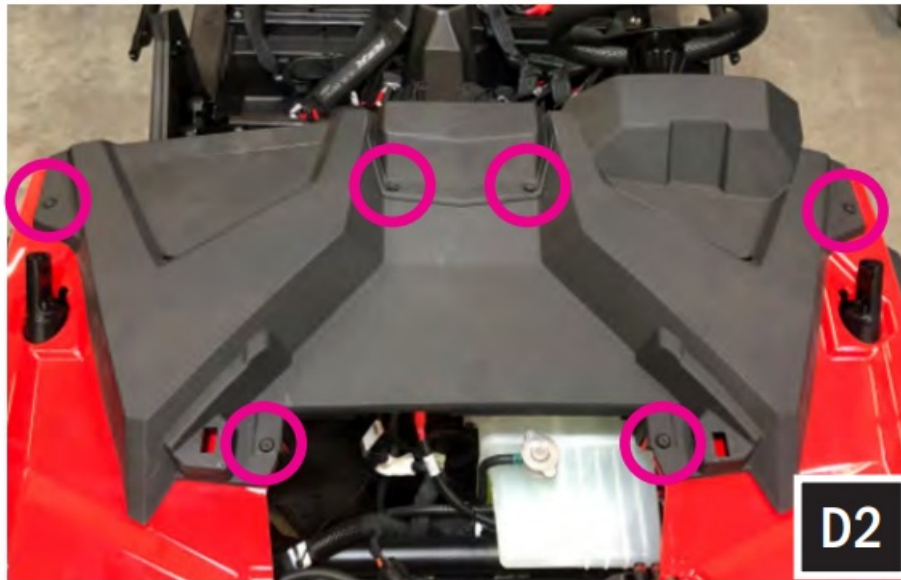
B. Disconnect the negative battery cable from the battery.



C. Remove all of the center console push pins and T-40 Torx screws. For 4-seat models, disconnect the harness attached to the 12v accessory socket.



D1. Remove the hood by turning the locking pins and lifting it up.



D2. Unscrew the (4) T40 Torx screws and extract the (2) push pins from the top-center dash compartment. Lift and remove the top-center dash compartment. From inside the machine, pull the dash towards you to unclip. Once unclipped remove the dash.

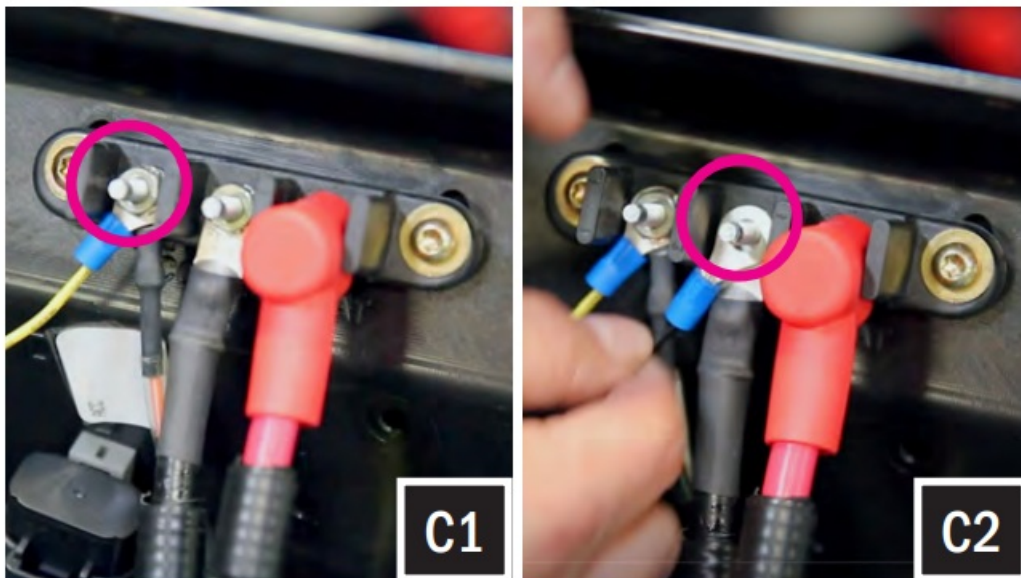
RUNNING AMP POWER CABLE AND REAR SPEAKER WIRE (RZR3)



A. Unwrap the tape and pull the rubber wire grommet out of the firewall.



B. Pull the MRB3 POWER and GROUND wires through the rubber grommet and feed through the hole in the firewall to the power strip located on the opposite side of the firewall.



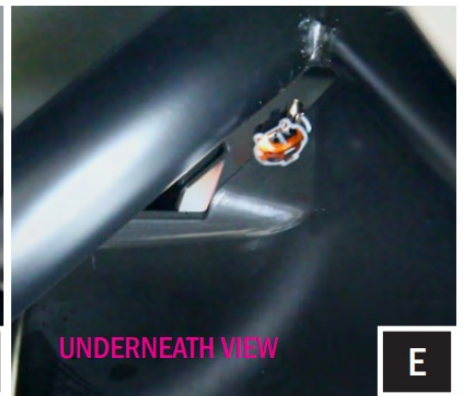
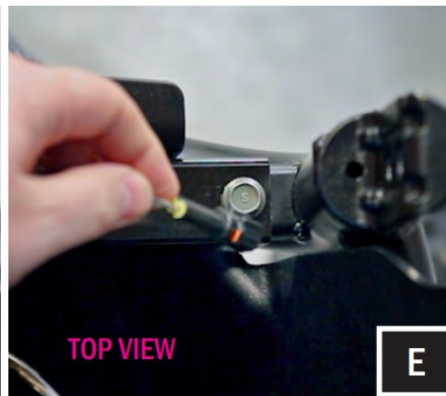
C. From under the hood, against the top firewall, unscrew the nut on the first position terminal (12v accessory) and attach the yellow POWER wire. Refasten on the nut (C1). Then unscrew the nut on the second position terminal and attach the black GROUND wire. Re-screw on the nut (C2).



Some RZR models come with the ground "GND" terminal not connected as shown. If you do not have factory wiring going to this terminal, add a ground wire from the "GND" terminal to the frame before connecting the wires. We recommend removing the paint to bare metal, using a star washer, and repainting over the connection.



D. Feed the connector end of the Amp power wire through the center console to the other side of the firewall (D1). Then feed the power wire through the grommet hole (D2) and through the rubber grommet with the rest of the vehicle's wiring and cables (D3). Do the same for the 2nd Amp power & rear speaker wire.

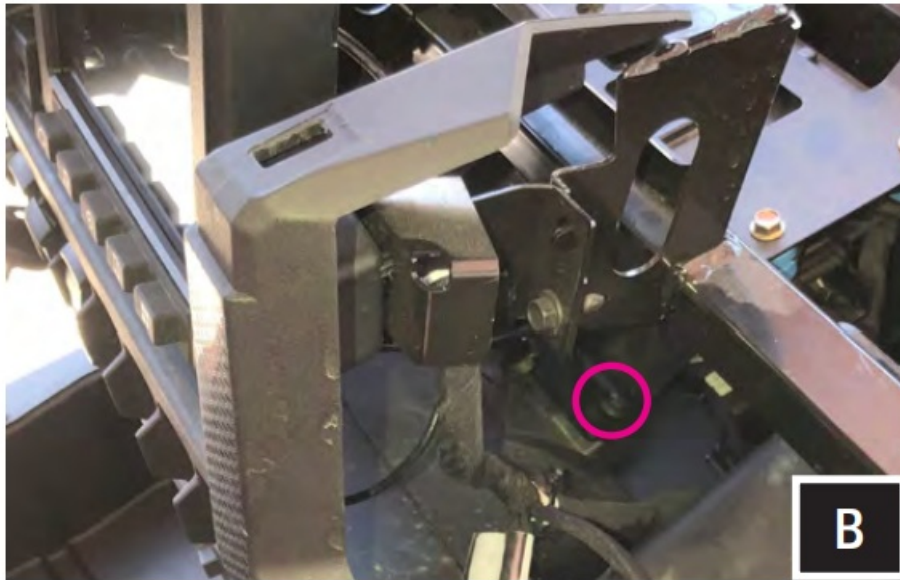


E. Route the front speaker wire through the opening where the firewall and roll cage bar meet on both the driver and passenger side. Leave these wires loose until the front speaker pods are to be installed.

RUNNING AMP POWER CABLE AND REAR SPEAKER WIRE (RZR4)



A. Extract the (4) T40 surrounding the ride command system OR top-center dash compartment (for non-Ride Command vehicles) and (2) push pins found in the dash pocket. Unclip the dash surrounding the glovebox. Once unclipped, gently pull the dash forward and remove the upper dash pocket.



B. Extract the (1) T40 torx that secures the lower dash pocket. Disconnect the USB and unclip the LED from the lower dash pocket. Remove the lower dash pocket.



C. Label / take photos of the harnesses connected to the dash. Once recorded, disconnect the harnesses, and remove the dash.



D. Unwrap the tape and pull the rubber wire grommet out of the firewall.



E. Starting from under the hood compartment, feed the connector of the power wire, MRB3 power connector through the grommet into the dash cavity. In order to connect to the amplifier in a later step, pull about 18" of the amp power wire into the dash cavity.



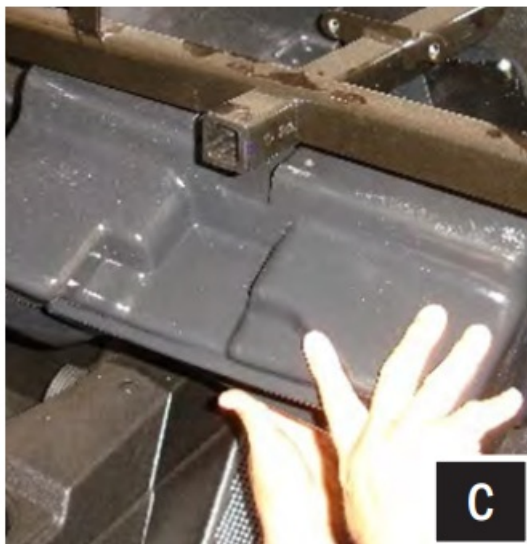
GLOVE BOX SUBWOOFER ENCLOSURE (RZR3)



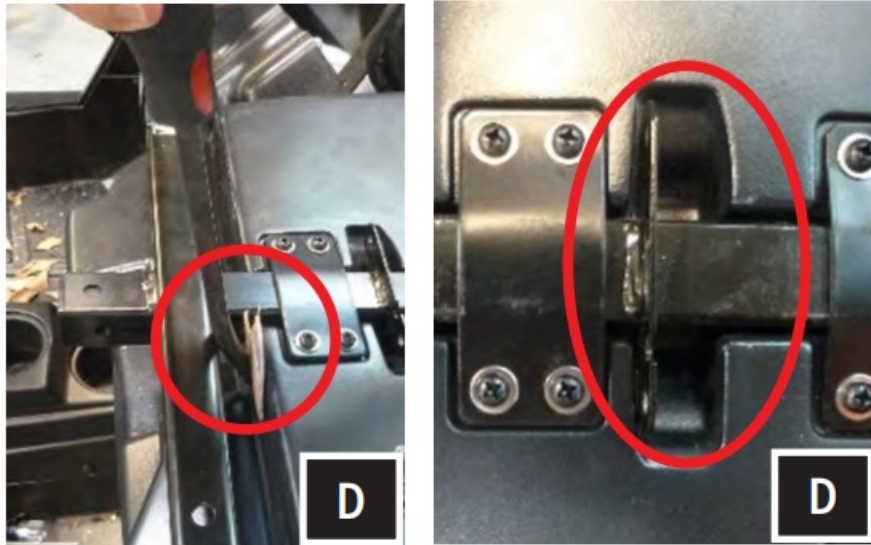
A. Remove the ten T40 Torx bolts that secure the 2 piece fender. **Note:** there is one screw inside the fender well. Remove the two additional screws from the striker plate, slide the fender up the cage rail, and secure



B. Remove the two 10mm bolts that secure the factory glove box and remove the factory glove box



C. Lift the enclosure into place and align the top channel in the grab handle bar. While holding the enclosure in place, loosely attached the flat brackets to the top of the enclosure using the long screws provided.



D. To properly align the box, slide the box firmly toward the front of the vehicle. It should sit approximately 1/4" from the factory glove box mount. If not properly installed, the kick pod and dash panel will not align in place.



E. While applying pressure to keep the enclosure secure against the front wall, tighten the top brackets, as they tighten they will bend slightly to add pressure and avoid any vibration, now tighten the lower L bracket to the enclosure



F. Loosely install the bottom L bracket, align the mounting hole with the factory bung, and secure with one of the long screws provided (you will tighten the bracket to the enclosure and factory bung AFTER step J)



G. For 2015-up model year vehicles, install the supplied bracket using the short screws provided and adjust forward or back so the glove box latch closes tight



H. For 2014 model-year vehicles remove the factory glove box door latch. Mount the latch to the supplied bracket and secure it to the enclosure using the short screws provided



I. Route the speaker wire away from any moving parts and any sharp metal, then connect it to the amplifier.



J. Attach the factory glovebox door

GLOVE BOX SUBWOOFER ENCLOSURE (RZR4)



A. Using (4) 8mm screws and washers, attach Bracket "B" to the enclosure.



B. Install door latch onto enclosure with the provided (2) T30 M6x8mm screws.



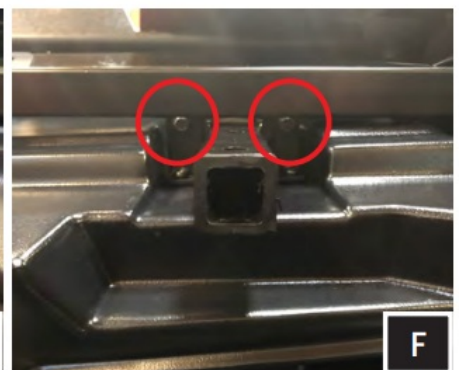
C. Install left and right door hinge brackets using (2) 8mm screws and washers for each side.



D. Install lower mounting bracket onto enclosure with the provided (2) 8mm screws and washers.



E. With the dash removed, extract the (2) 10mm bolts retaining the glovebox and remove the glovebox.



F. Lift the enclosure into place. Using the factory glove box mounting hardware, fasten the enclosure into place.

Pull sub-enclosure wiring towards the center of the vehicle to avoid being pinched by the chassis.



G. Place Bracket "A" into place towards the firewall, and fasten it into place with the (4) 8mm socket head screws and washers provided with the kit.



H. Fasten the provided #14 screw to secure the enclosure lower mounting bracket.

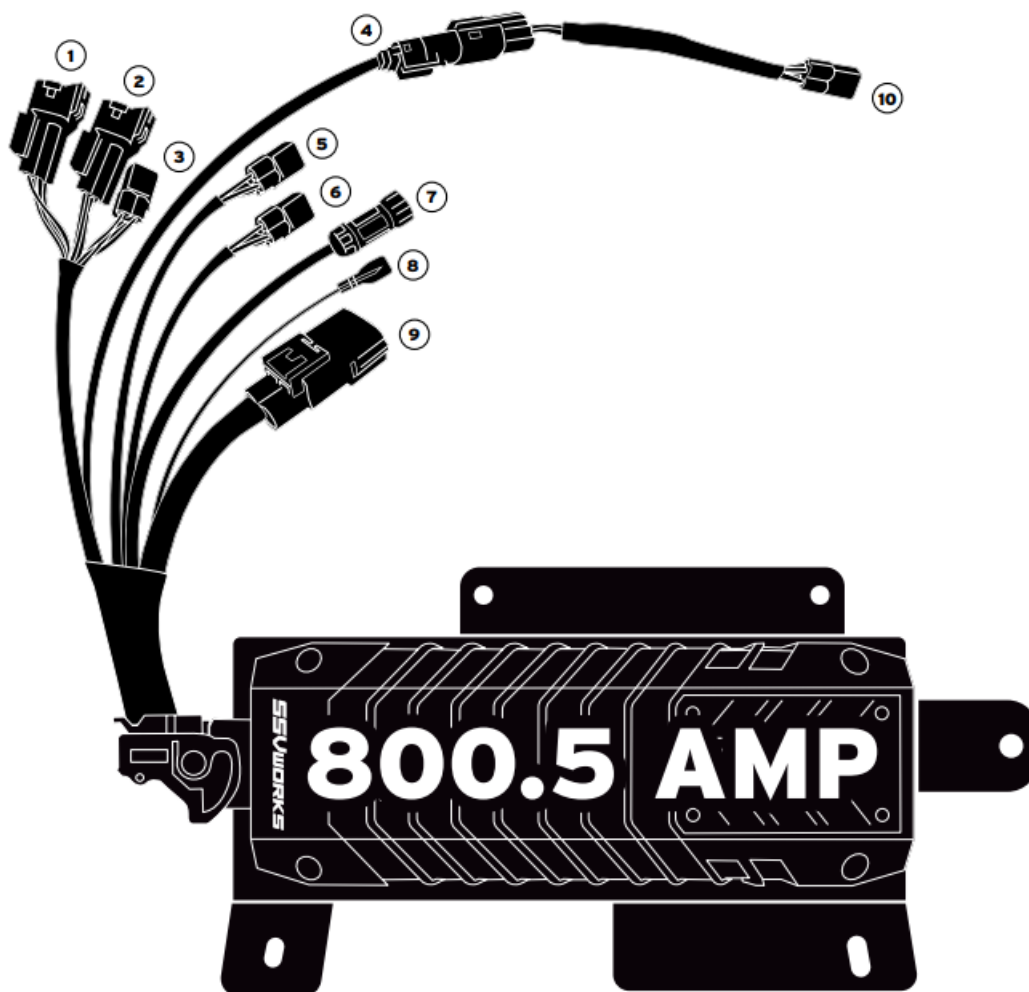


H. Feed the sub amp power wire out of the dash cavity through the grommet hole, down the firewall, and back through the center console to the battery.

I. Attach the factory glovebox door.

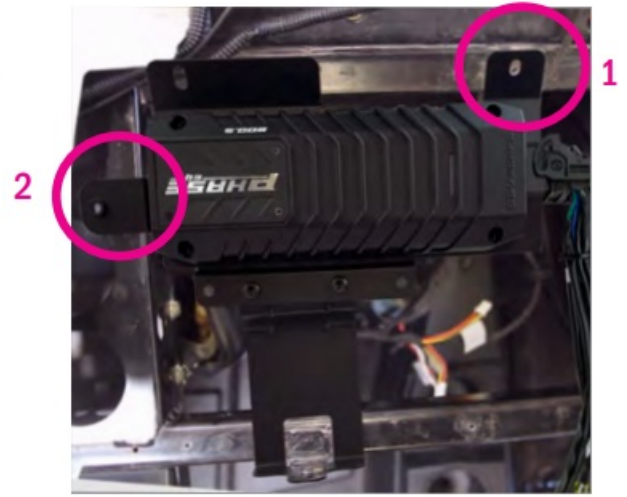
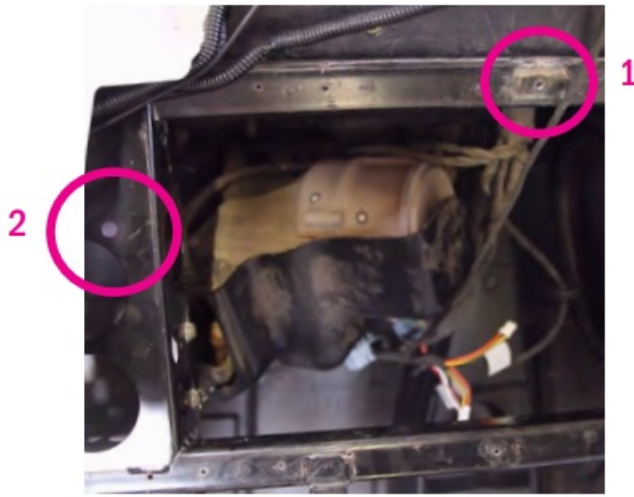


AMP PLATE INSTALLATION



1. INPUT (FRONT)
2. INPUT (REAR)
3. INPUT (SUB)
4. OUTPUT (SUB)
5. B-H2701
6. OUTPUT (FRONT)
7. OUTPUT (REAR)
8. EXT SWITCH
9. AMP TURN-ON
10. TO POWER INPUT

AMP PLATE INSTALLATION (RZR3)

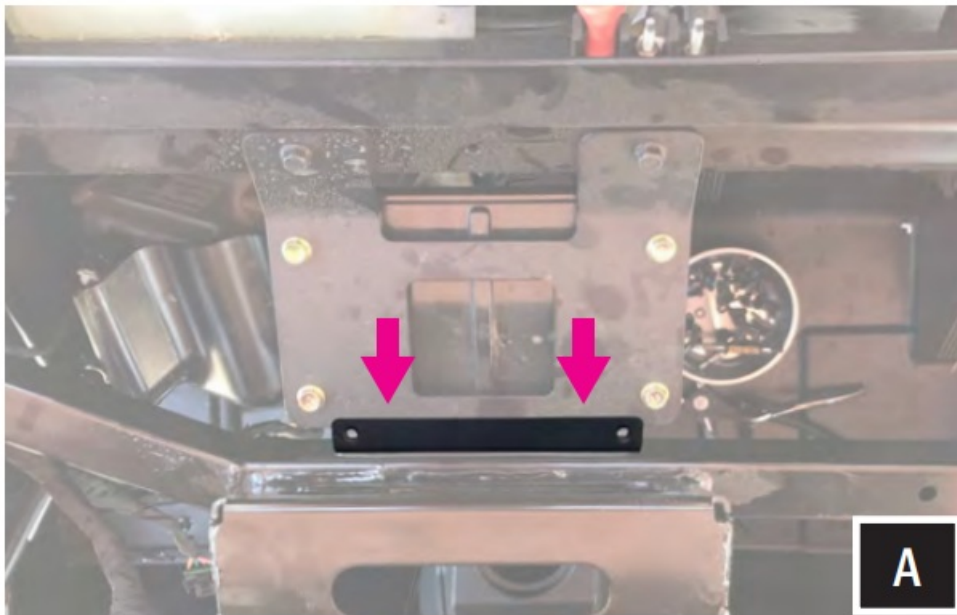


Place the pre-installed amp plate with MRB3 Brain on the frame of the dash and line up the hole on the top of the amp plate to the factory hole where the pocket bracket was previously installed (1). Loosely screw in the factory 10mm screw in this hole location.

Next, loosely screw in the T-30 screw with the washer from underneath the steering column into the amp plate (2). Lastly, the hand tightens both screws.

NOTE: The BLUE remote wire does NOT need 12-volt power. Leave it unconnected.

AMP TRAY INSTALLATION – WITHOUT FACTORY AUDIO (RZR4)



A. Place the amp tray base bracket at the location of the (2) removed factory 10mm bolts. Re-fasten the bolts through both the amp tray base bracket and factory plate to secure them to the chassis.



B. Place the amp tray into the mounting location by lining up the amp plate screw holes to the factory holes on the chassis and base bracket.



C. Secure the amp tray by using the 10mm factory bolt at the top, and two (2) T-30 torx bolts at the bottom mounting locations.

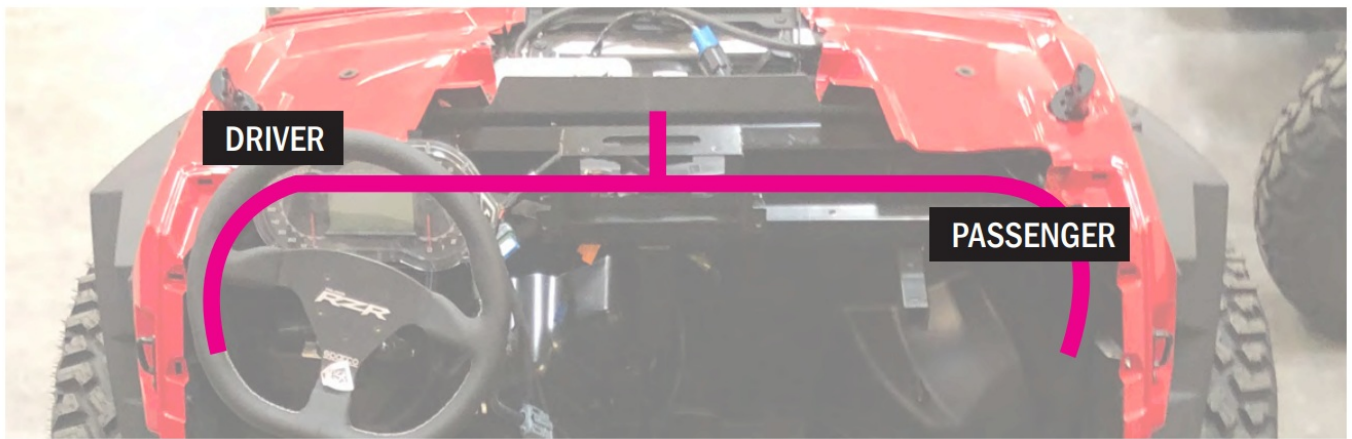


D. Using a scribe or punch, mark the location of the needed pilot hole on the passenger side of the tray.



E. With the accurate location marked, uninstall the amp tray and use a 13/64" drill bit to drill your pilot hole. With your pilot hole drilled, reinstall the amp tray. Use the self-tapping screw in the drilled hole location.

FRONT KICK PANELS (RZR4)



Route the B-H1149 across the dash cavity. The cable marked as “DRIVER” will route under the dash and down to the driver-side footwell, and the cable marked “PASSENGER” will route over the top and down the right side of the RZ4-GB10 enclosure.



FRONT KICK PANELS (ALL MODELS)



A. Starting at the driver's side footwell, remove the factory T40 Torx screw as shown. Save this screw for Step D.



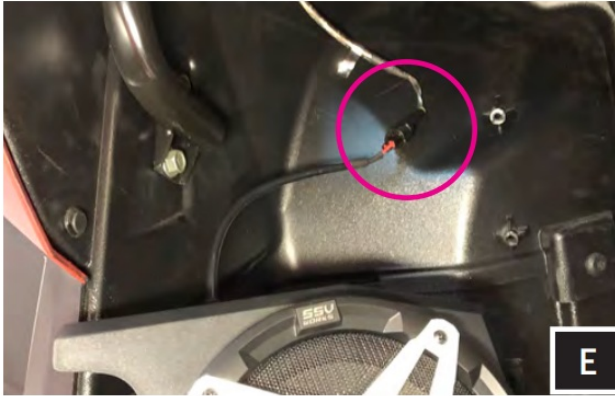
B. Place the driver kick pod into location so that both vehicle screw bosses line up with kick pod brackets.



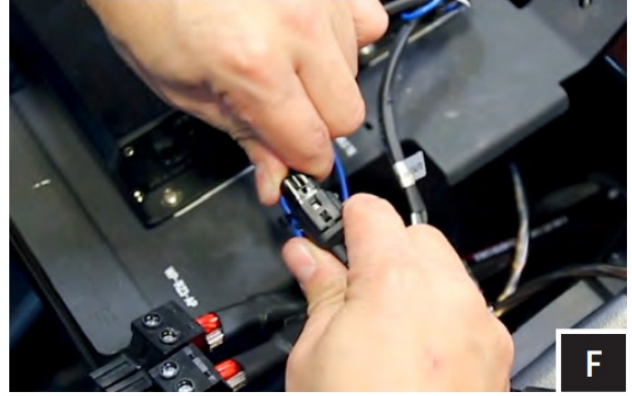
C. Using (x2) #14 screw loosely secure the kick pod to the factory screw bosses.



D. Re-use the factory T40 Torx screw previously removed in Step A to loosely bolt through the lower kick pod bracket to the vehicle panel. Once all three screws are in place go back and re-tighten.



E. Connect the B-H1149 cable to the speaker pod and zip tie all cables to the frame.



F. Connect the B-H1149 speaker harness to the amplifier front output (white/grey).

USB/AUX INPUT PORT INSTALLATION (ALL MODELS)



A. Unscrew and remove the plastic nut from the port. Make sure to open the fuse holder and remove the fuse so the nut will fit through it. Crimp on the provided ring terminals on the ends of the (Red) Power and (Black) Ground wire.



B. Make sure all harness connectors are unplugged from the dash panel. Push out the factory 12v port.



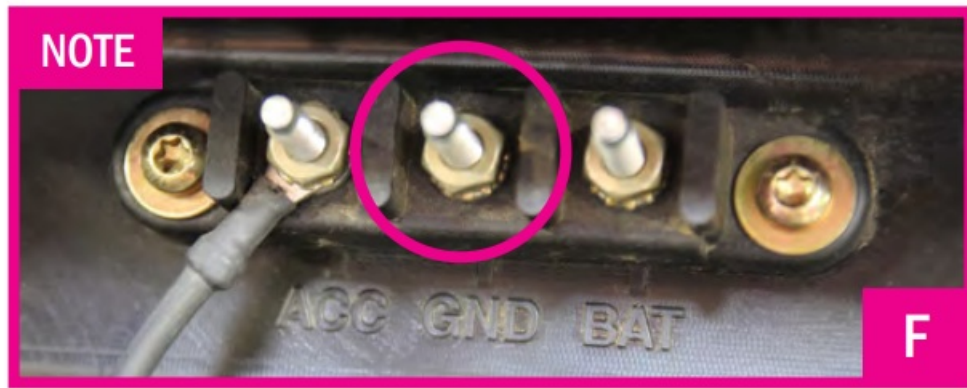
C. Feed in the wires and cable through the factory 12v hole. Keep the fuse holder open and empty until it has passed through the hole.



D. Feed the plastic nut back through the wires and cables and screw it back onto the port. Hand tightens only. Replace the fuse and close the fuse holder.



E. Connect the AUX-in connector to the MRB3 brain.



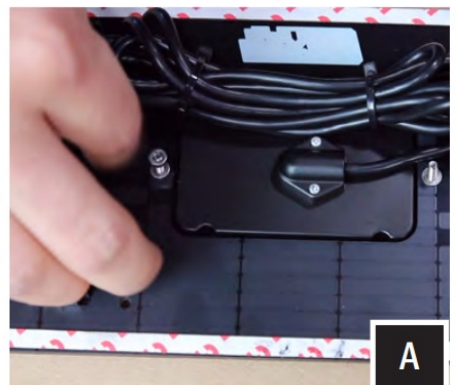
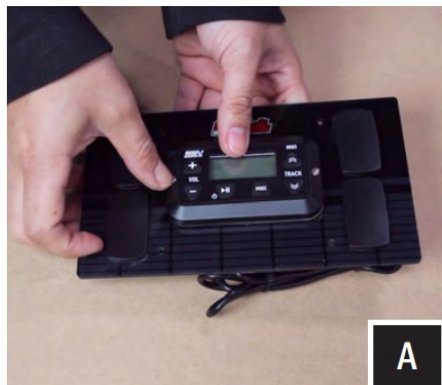
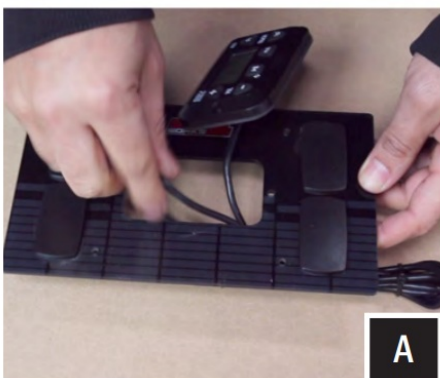
F. Some RZR models come with the ground “GND” terminal not connected as shown. If you do not have factory wiring going to this terminal, add a ground wire from the “GND” terminal to the frame before connecting the wires. We recommend removing the paint to bare metal, using a star washer, and repainting over the connection.



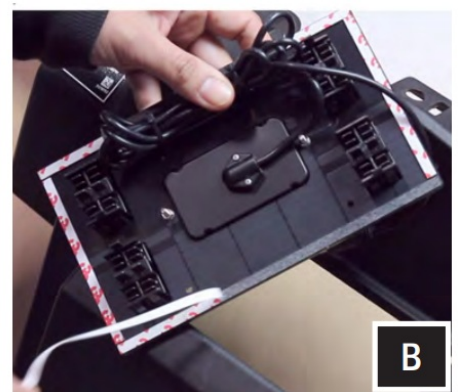
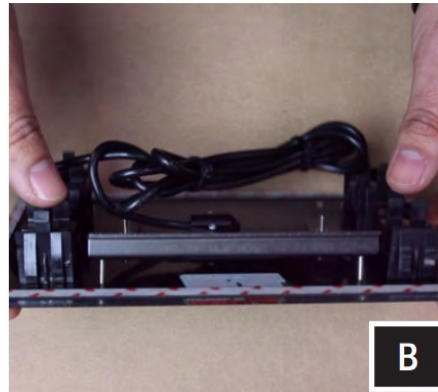
G. Run the (RED) Power and (BLACK) Ground wire of the USB/Aux input port to the Bus Bar. Unscrew the nut on the first position terminal (accessory) and attach the (RED) Power wire. Re-screw on the nut. Then unscrew the nut on the second position terminal and attach the (BLACK) Ground wire. Re-screw on the nut.



DASH KIT FOR MRB3 (RZR3)



A. Take the MRB3 Remote and pass the din cable through the dash kit panel. Once the MRB3 remote is laying flat on the dash panel pass (2) M3 Screws through the remote and kit panel. Flip the kit around and use (2) M3 washers and (2) M3 Nuts to secure the MRB3 down into position. Do not over-tighten the nuts, this can cause damage to the dash kit panel.



B. Loosley assemble the top mounting bracket to the dash kit panel using (2) M3 Screws. Peel off the double-sided stick from the back of the dash kit panel.



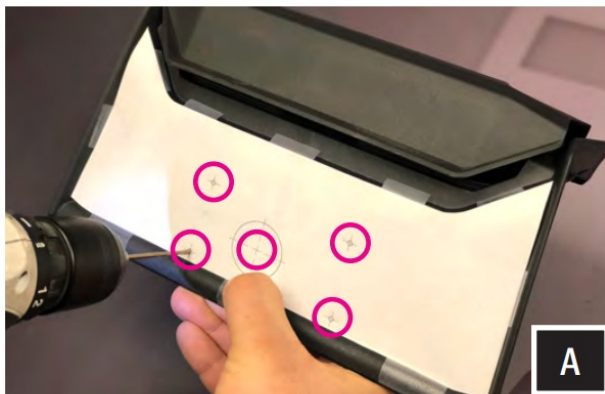
C . Hook the top bracket that is mounted to the kit panel behind the dash. Lay the panel flat and firmly press down along the outside edges to ensure double-sided stick tape has stuck to the dash surface. Fully tighten the top bracket. Using (2) M3 screws secure the bottom bracket to the dash panel. Tighten the bracket just enough to firmly hold it in place, but do not over-tighten.



D. The installation of the dash kit panel is complete.

At this point, you may want to install the USB/AUX input before re-installing the dash panel. Refer to Instruction 5. If you are not installing the USB/AUX input, re-assemble the dash. Refer to the MRB3 manual for wiring instructions.

DASH KIT FOR MRB3 (RZR4)



A. Using a 3/32" drill bit, drill out each template guide point and a pilot hole into the center guide point.



B. Remove template, drill out pilot hole with 1-1/8" drill bit



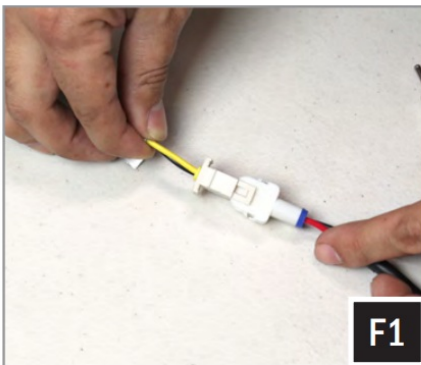
C. Align DM3 over drilled holes in the compartment. Secure the DM3 to the compartment with (4) of the provided MRB3 dash screws. ****Do not over-torque****



D. Pass the controller cable through the 1-1/8" hole and place the controller into the DM3. MRB3 is sold separately.



E. Fasten the MRB3 controller to the DM3 with the (2) remaining MRB3 dash screws. **Do not over torque**



F1. Connect the power/ground wire.



F2. Connect the antenna. Route the antenna wire under dash.



F3. Re-assemble dash and route controller cable into dash cavity and connect to MRB3 brain.



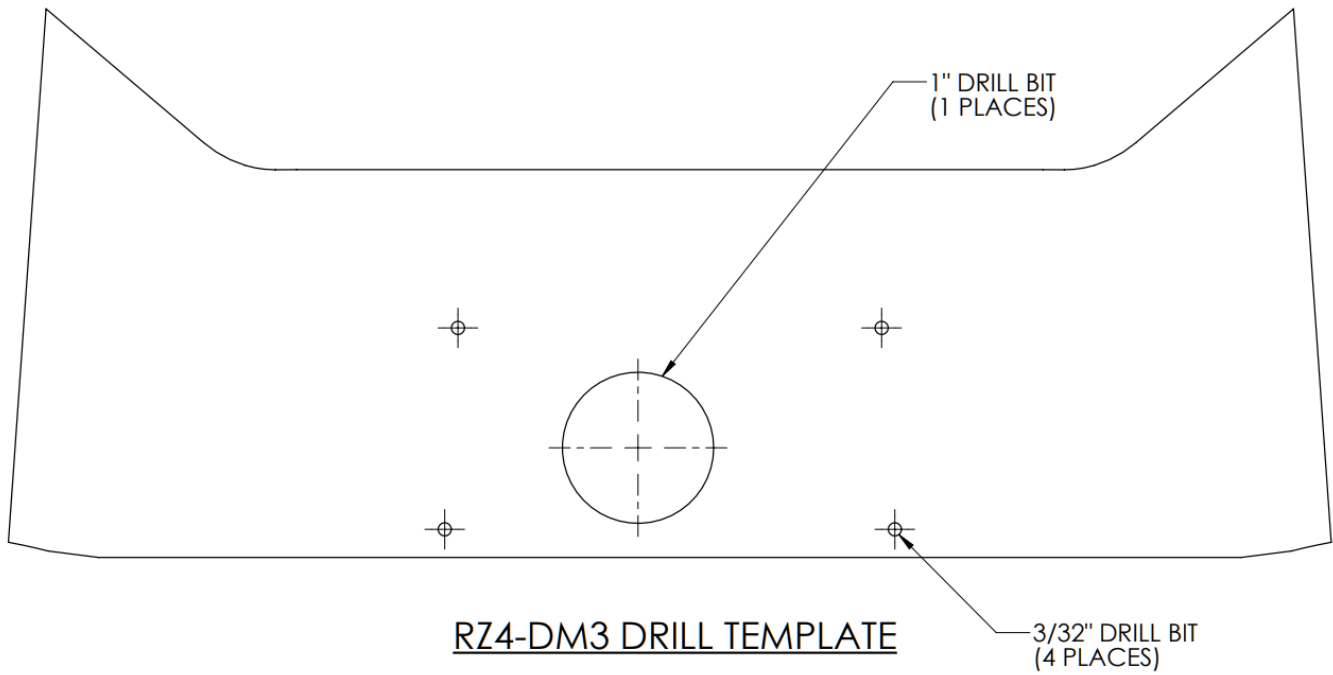
Some RZR models come with the ground “GND” terminal not connected as shown. If you do not have factory wiring going to this terminal, add a ground wire from the “GND” terminal to the frame before connecting the wires. We recommend removing the paint to bare metal, using a star washer, and repainting over the connection.



G. Run the (RED) Power and (BLACK) Ground wire of the MRB3 to the Bus Bar. Unscrew the nut on the first position terminal (accessory) and attach the (RED) Power wire. Re-screw on the nut. Then unscrew the nut on the second position terminal and attach the (BLACK) Ground wire. Re-screw on the nut.

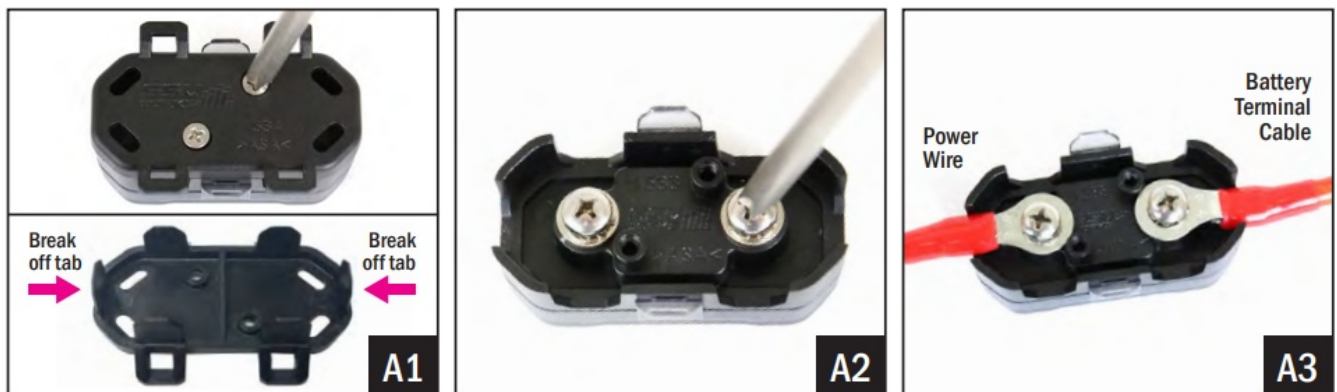


H. The installation of the dash kit panel is complete.



CONNECTING POWER & GROUND CABLE TO BATTERY

A1. Remove the bottom cover of the fuse holder by extracting the 2 screws. Break off the right and left side tabs on the bottom cover.



A2. Extract both fuse holder screws.

A3. Attach both the Power Wire and Battery Terminal Cable to the fuse holder. Reattach the bottom cover.



B. Unscrew the factory nut on the negative battery terminal. Install the 2 ground cables to the screw on the ground battery terminal. Re-install the factory nut.



C. Unscrew the factory nut on the positive battery terminal. Install the 2 power cables to the screw on the positive battery terminal. Re-install the factory nut.



D. Remove the top of the fuse holder and extract the 2 screws. Insert the 40A fuse, screw the 2 screws back in and reattach the fuse holder top.



E. Zip tie all of the electrical cabling (factory and audio) along the center column away from the drive shaft.

THIS CONCLUDES THE INSTALLATION PROCESS. REPLACE THE FACTORY PANELS AND SEATS. QUESTIONS? PLEASE CONTACT SSV WORKS AT 818-991-1778 OR EMAIL SUPPORT@SSVWORKS.COM

**LOOKING FOR MORE SOUND?
TRY SSV WORKS CAGE MOUNT 6.5" SPEAKER PODS!**

SSV Works custom molded Cage Mount Pods are designed for 6.5" speakers and can be used when you need more sound in your Side by Side. Unlike wakeboard towers, these mini pods are designed to provide sound to passengers without blocking visibility. They are finished in a black texture coat and the design lines match factory interior textures. Includes dual clamping system and stainless mounting hardware. No extra amplifier is needed when used with this kit! Even better, they can be loaded with either Kicker or SSV Works Powersports 6.5" speakers.

Call 818-991-1778 to order yours today!



We are committed to your satisfaction and we know you will enjoy our products. If you have questions or need any assistance, please let us know.



<https://ssvworks.com>



[SSVWORKS.COM](https://www.ssvworks.com)



1-818-991-1778 EXT 2



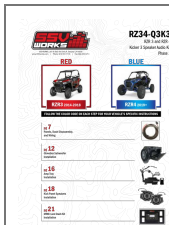
SUPPORT@SSVWORKS.COM

Returns must be made within 30 days of the purchase date. Claims for missing tents or items damaged in transit must be rectified within 30 business days of receipt of merchandise. All returns must be in original packaging and in re-sellable condition. Shipping fees are not refundable.

© 2022 SSV Works, Oxnard, CA 93030 RZ34-Q3K3 7-26-22



Documents / Resources



[SSV WORKS RZ34-Q3K3 RZR 3 and RZR 4 Kicker 3 Speaker Audio Kit](#) [pdf] Instruction Manual

RZ34-Q3K3, RZR 3 and RZR 4 Kicker 3 Speaker Audio Kit, RZ34-Q3K3 RZR 3 and RZR 4 Kicker 3 Speaker Audio Kit

References

- [SSV Works](#)

Manuals+