



## SSG SS-SD628 Controller Instruction Manual

[Home](#) » [SSG](#) » SSG SS-SD628 Controller Instruction Manual 



### SS-SD628 controller Instruction Manual

#### Contents

- [1 An overview of product features:](#)
- [2 Product appearance and description:](#)
- [3 Offline file instructions:](#)
- [4 Remote control function:](#)
- [5 Upgrade instructions:](#)
- [6 Documents / Resources](#)
  - [6.1 References](#)

#### An overview of product features:

An integrated machine that can be controlled remotely, which can play ssv offline file function, wireless synchronous playback function, external 4G module, lamp debugging and addressing. The operation is simple, easy to use, to meet the needs of customers and debugging personnel in a variety of application scenarios.

#### Product appearance and description:

SS-SD628 player face view and description:



SS-SD628 Player rear view and description:



## 2. Basic parameter table of controller:

Input voltage	AC 180~240V
Rated power	6.5 w
Length	236mm
Width	137mm
Height	45.1 mm
Fixed hole spacing	218x75mm

## Offline file instructions:

### 1. Play instructions:

Put the finished SSV file into the TF card and insert it into the SS-SD628, the controller will play it automatically. When the controller recognizes the storage device, the logo will appear in the upper left corner of the playback interface. All the recognized playback programs will be displayed in the Offline Playlist and played in the order of the list.

### 2. Offline file making:

Import footage and create cabling files in Easy Show software. Click Tools – Offline File – Generate offline file, refer to ES instruction manual for details.

## Remote control function:

There are two ways you can be remotely controlled

1. USB interface can be connected to 4G module through shiqiwulian remote control.
2. The mobile phone can be directly connected to the control interface through the USB cable and can be controlled locally through the mobile phone.

## 1. Home page:

**Presentation:** Fixed color, Color jump, Color gradient, Color Tailing, Random Starlight, Full Color gradient.

Click the plus sign to add dazzling effects.

**Program:** Insert USB flash drive or TF card and identify the generated SSV file. (Identifying the USB flash drive or TF card will show the USB flash drive icon in the top left corner)

**Preview:** You can preview the play effect of offline files.

## 2. Settings:

**Playback rate:** The playback speed can be changed.

**Brightness:** The brightness of the luminaire can be set.

**Controller ID:** The ID of the controller can be set manually.

**Sync setting:** After this parameter is enabled, multiple devices can play simultaneously.

**Playback mode:** Offline playback and presentation effects can be manually switched.

**Local parameter Settings:** Chip model, baud rate, GAMMA value, port pixel, color order.

**DMX512 Addressing:** Address the DMX512 luminaire.

**BDW512 Addressing write parameters:** Settings for the BDW512 chip.

**Calendar time:** Set the date, time of the controller.

**Language:** English and Chinese can be switched at will.

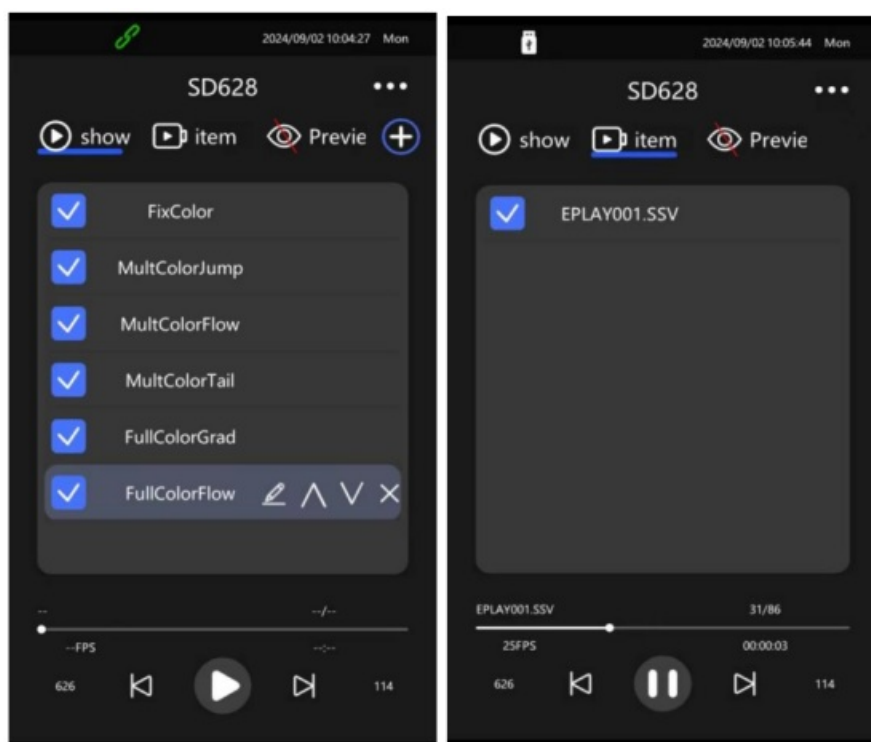
**Timing mode:** Through different ways of server, GPS correction system time.

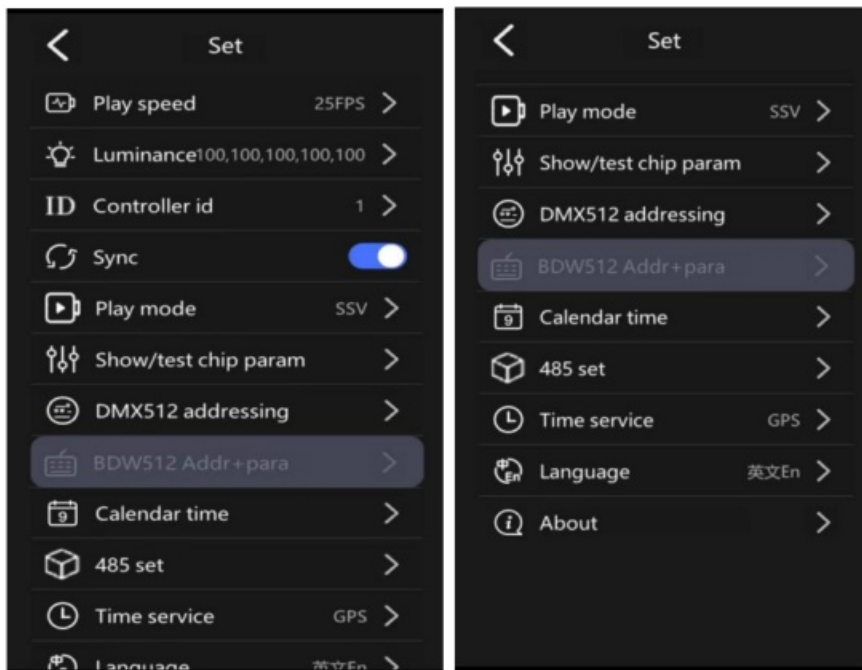
**About:** Controller related information.

3. **Screen test:** mainly test color, address, etc., which can provide debugging convenience to the maximum extent in practical applications.

4. **Console:** the function of DMX512 console is integrated on the controller, which is convenient for practical application.

5. Remote function page diagram:





## Upgrade instructions:

Put the upgrade package in the TF card and pop up the upgrade menu. Select Upgrade or click Upgrade menu to upgrade.

Address: Building 65, No. 17, Jingsheng South 4th Street, Zhongguancun Science and Technology Park, Tongzhou District, Beijing, China


Tel.: 010-56370005

<http://www.ssg-china.cn>

Postcode: 101102

Fax: 010-56370005-810

## Documents / Resources

	<p><a href="#">SSG SS-SD628 Controller</a> [pdf] Instruction Manual SS-SD628 Controller, SS-SD628, Controller</p>
---	---

## References

- [User Manual](#)

[Manuals+](#), [Privacy Policy](#)

This website is an independent publication and is neither affiliated with nor endorsed by any of the trademark owners. The "Bluetooth®" word mark and logos are registered trademarks owned by Bluetooth SIG, Inc. The "Wi-Fi®" word mark and logos are registered trademarks owned by the Wi-Fi Alliance. Any use of these marks on this website does not imply any affiliation with or endorsement.