



SSCHUBERTH 20013668 SC2 Communication System User Guide

[Home](#) » [SSCHUBERTH](#) » SSCHUBERTH 20013668 SC2 Communication System User Guide 



QUICK START GUIDE
SC2



SCHUBERTH SC2 APP



<https://redirects.sena.com/schuberth/sc2/apps>

App functions: Mesh Intercom, Bluetooth Intercom, Music, Device settings, Language settings


SCHUBERTH DEVICE MANAGER

The SCHUBERTH Device Manager allows you to upgrade the firmware and configure its settings directly from your PC. Download the SCHUBERTH Device Manager from oem.sena.com/schuberth/.

Contents

- 1 PRODUCT FEATURES
- 2 PRODUCT DETAILS
- 3 INSTALLING THE SC2 REMOTE CONTROL
- 4 INSTALLING THE SC2
- 5 REMOVING THE SC2
- 6 INSTALLING THE MICROPHONE
- 7 REPLACING THE BATTERY
- 8 ICON LEGEND
- 9 SC2 REMOTE CONTROL
- 10 CHECKING THE BATTERY LEVEL
- 11 PHONE PAIRING
- 12 MOBILE PHONE
- 13 SIRI AND GOOGLE ASSISTANT
- 14 MUSIC CONTROLS
- 15 MESH INTERCOM™
- 16 OPEN MESH™
- 17 CHANNEL SETTING (DEFAULT: CHANNEL 1)
- 18 GROUP MESH™
- 19 CREATING A GROUP MESH
- 20 JOINING AN EXISTING GROUP MESH
- 21 RESET MESH
- 22 ENABLE & DISABLE MIC (DEFAULT: ENABLE)
- 23 BLUETOOTH INTERCOM
- 24 TWO-WAY INTERCOM
- 25 FM RADIO
- 26 VOICE COMMAND
- 27 CONFIGURATION MENU
- 28 TROUBLESHOOTING
- 29 Remote Control Pairing
- 30 QUICK REFERENCE
- 31 Documents / Resources
 - 31.1 References
- 32 Related Posts

PRODUCT FEATURES

	Bluetooth ® 5.0
	Multi-Way Intercom
	Audio Multitasking™
	<ul style="list-style-type: none"> • Multi-Language Voice Command • Compatible with Siri and Google Assistant

User's Guide

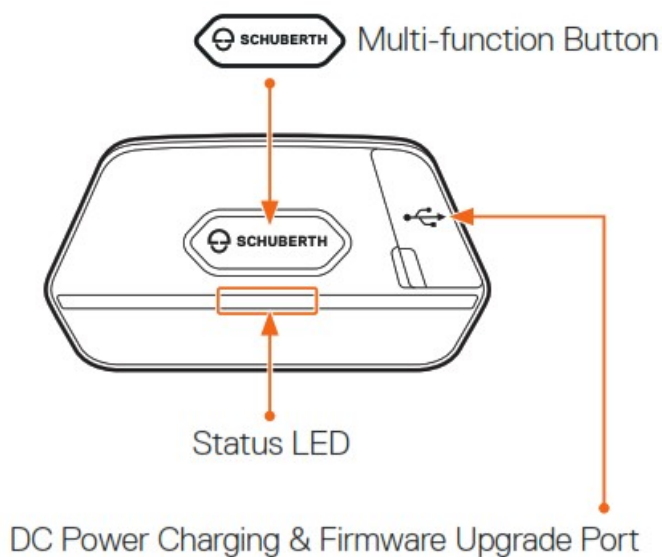


<https://redirects.sena.com/schuberth/sc2/usermanual>

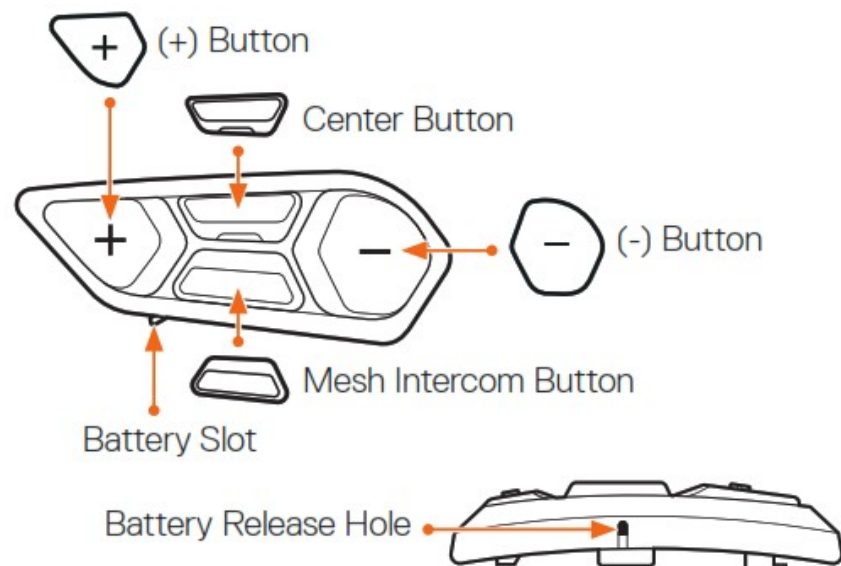
This product comes with a Quick Start Guide, which is a basic version of the User's Guide. A FULL VERSION OF THE USER'S GUIDE CAN BE DOWNLOADED AT [oem.sena.com/schuberth/](https://redirects.sena.com/schuberth/).

PRODUCT DETAILS

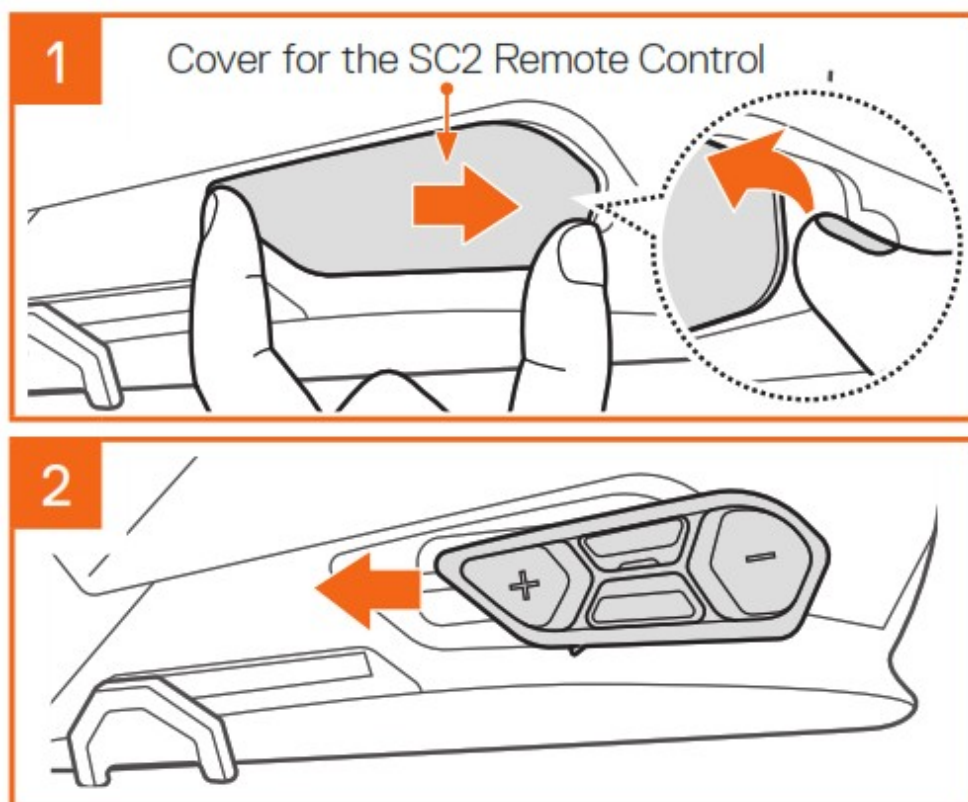
SC2



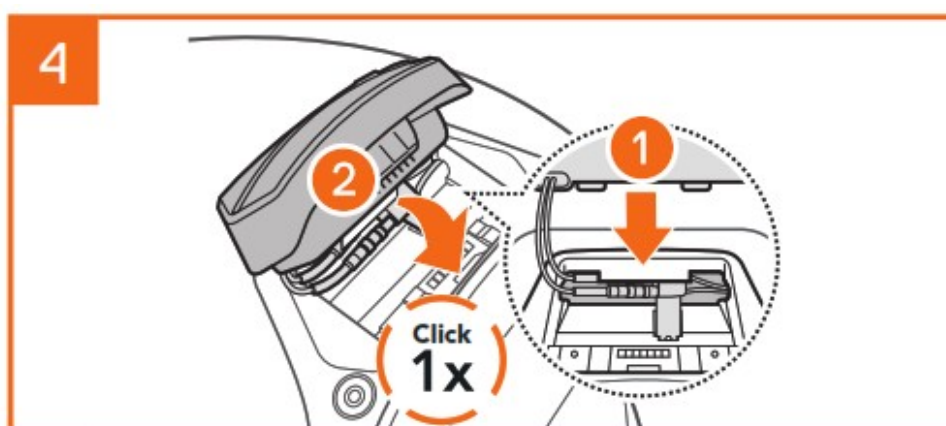
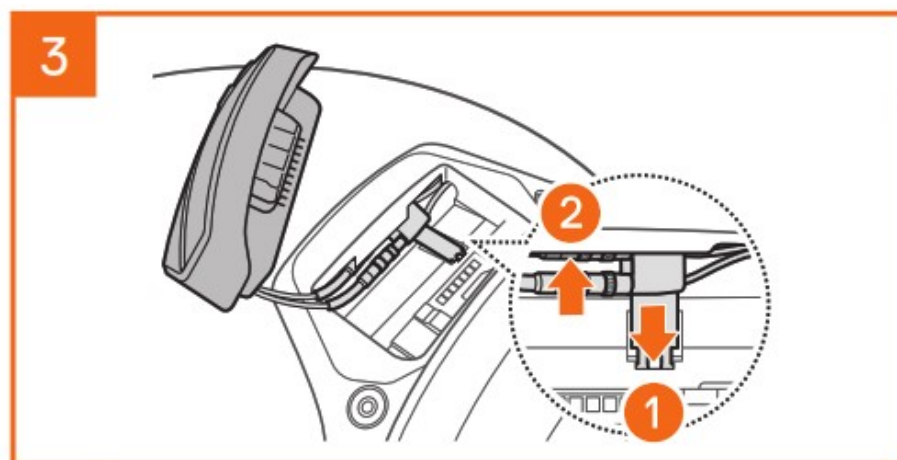
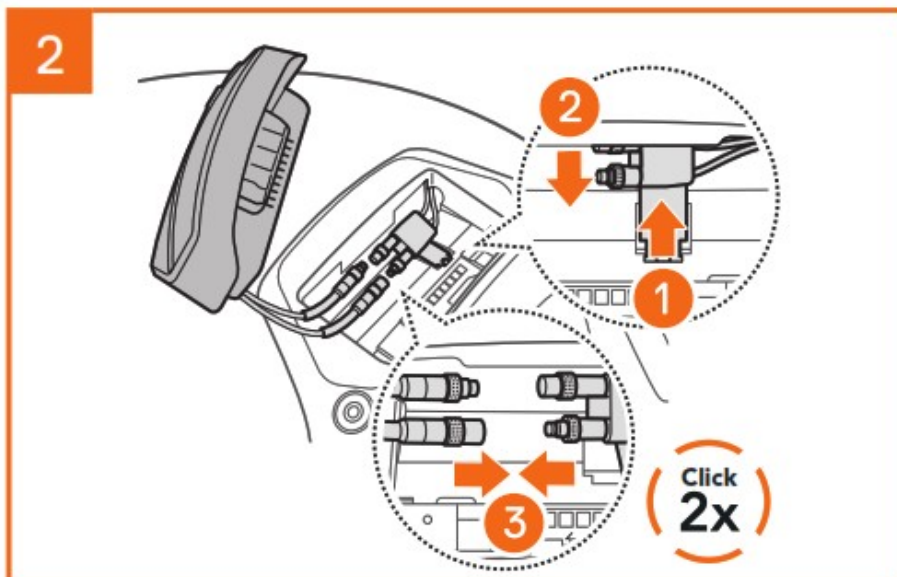
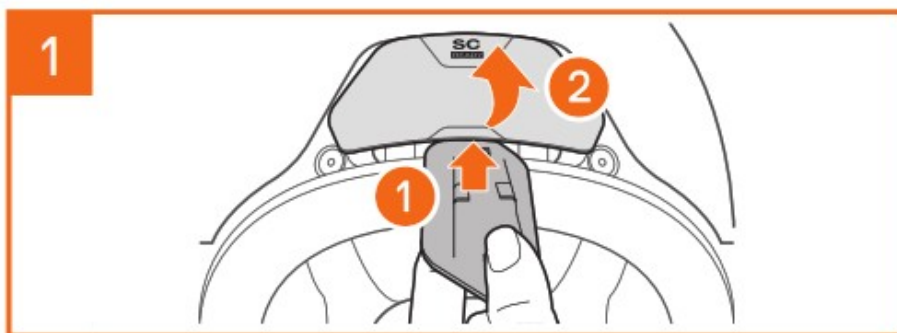
SC2 Remote Control



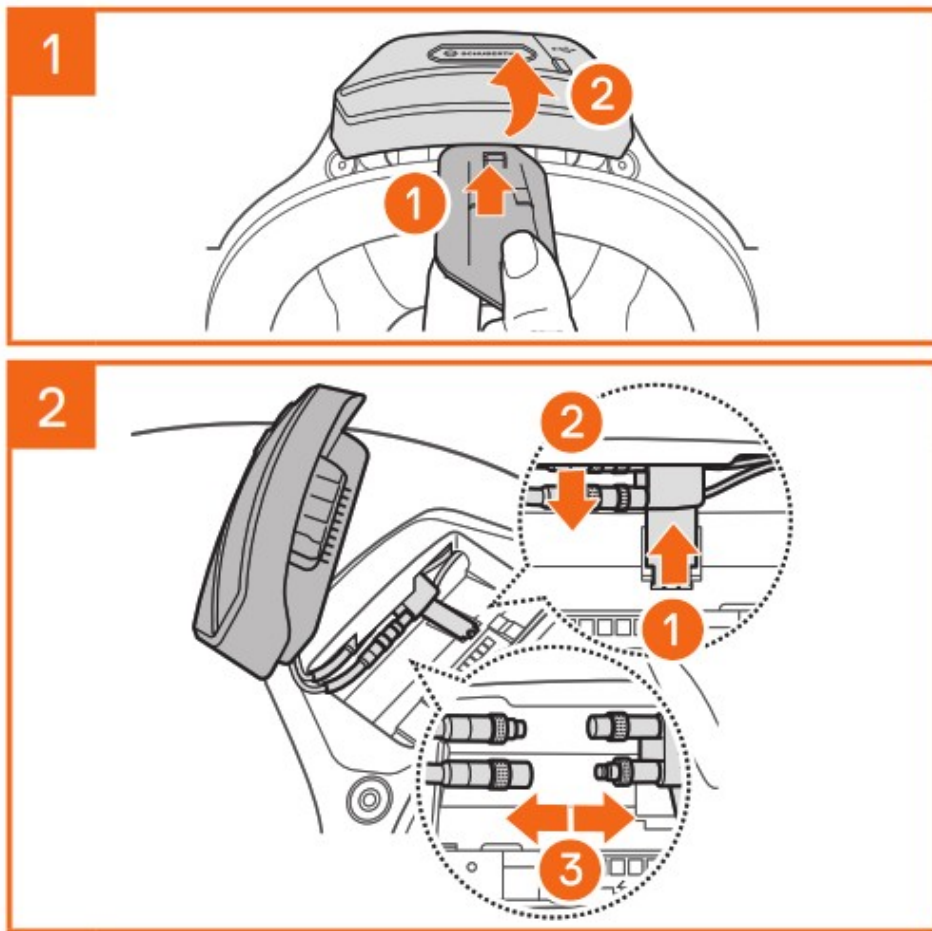
INSTALLING THE SC2 REMOTE CONTROL



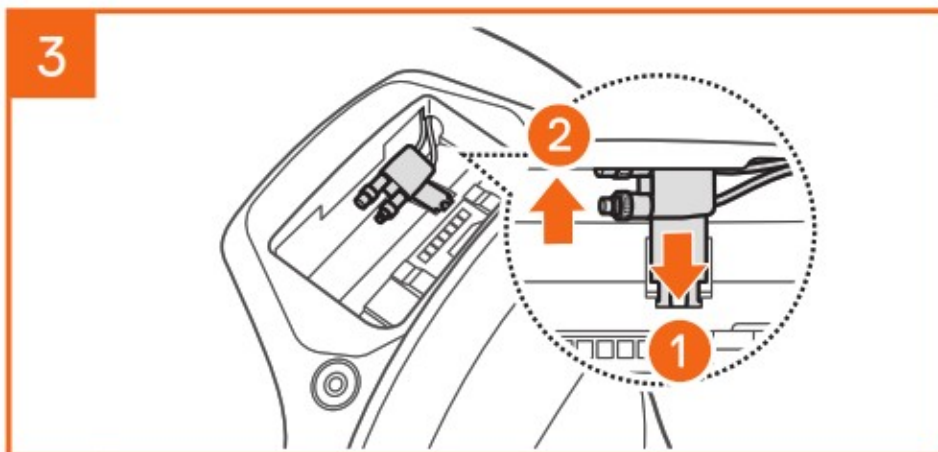
INSTALLING THE SC2



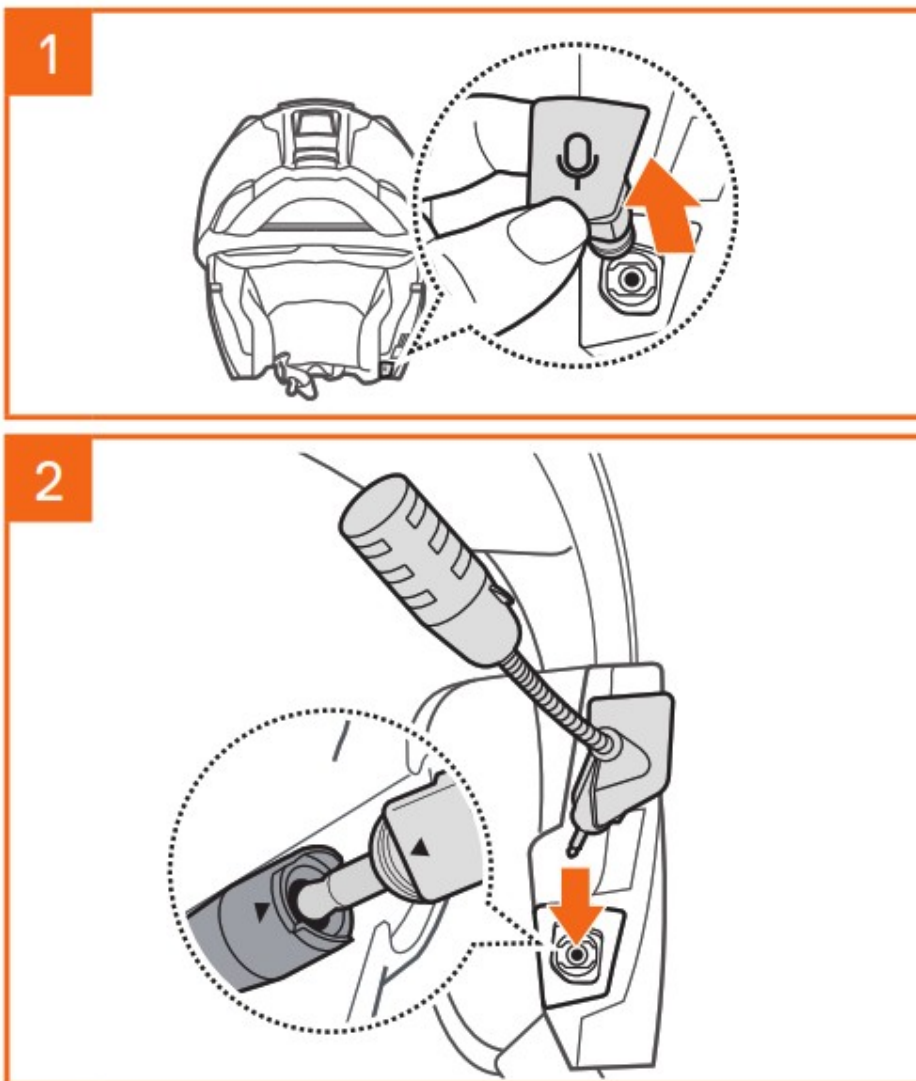
REMOVING THE SC2



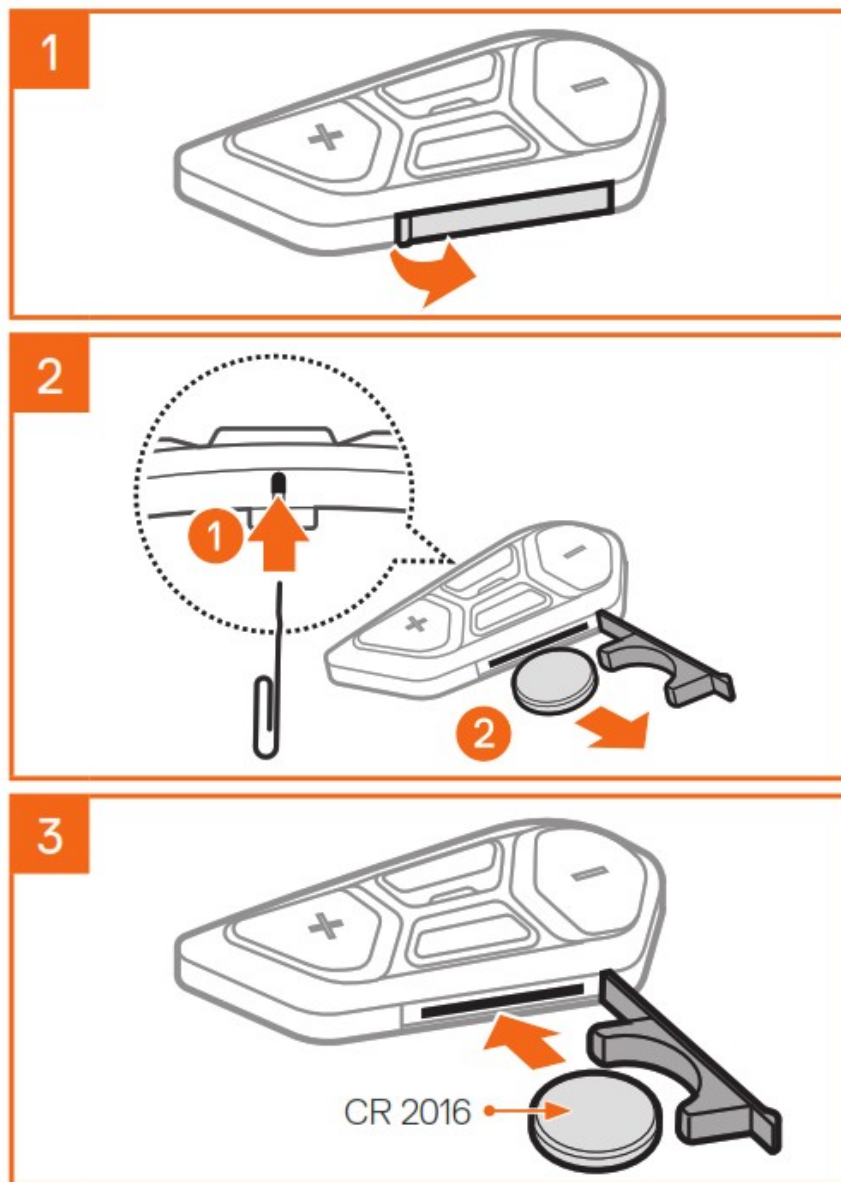
Note: When you need to un-plug the connectors, please wiggle and pull them. It will help the connector connection be released more easily.



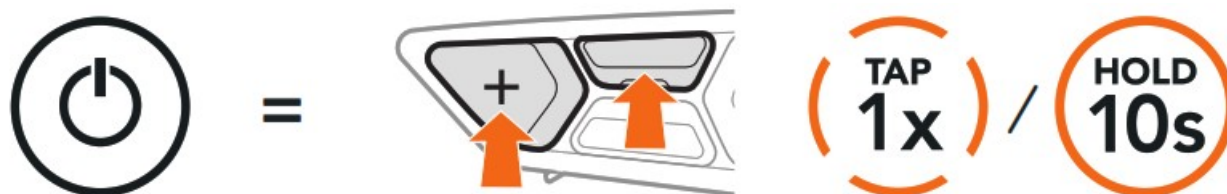
INSTALLING THE MICROPHONE



REPLACING THE BATTERY



ICON LEGEND



Function = Button(s) to tap the specified number of times or press and hold for the specified amount of time.



"Hello" Audible prompt

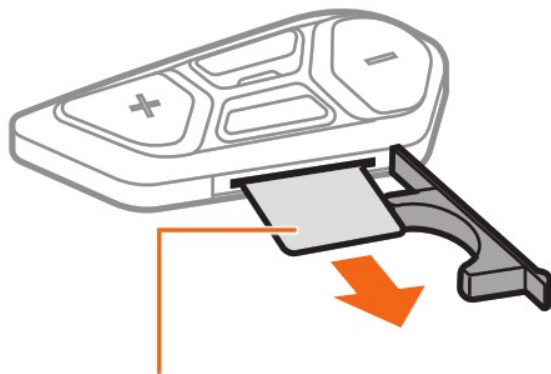
SC2
Powering On & Off



"Hello" or "Good Bye"

To switch off the SC2, hold the Multi-function Button for 2 seconds until you hear the double beep.

SC2 REMOTE CONTROL

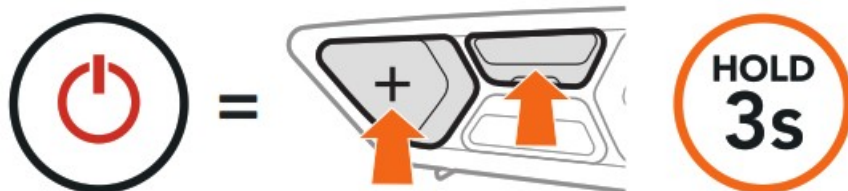


Plastic Strip

Powering On



Powering Off



Note: The SC2 and the SC2 Remote Control come paired together. They will automatically connect to each other when the SC2 and the SC2 Remote Control are powered on.

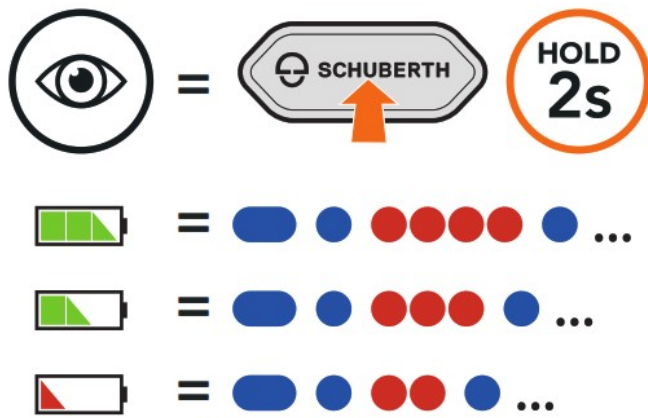
Volume Up & Down



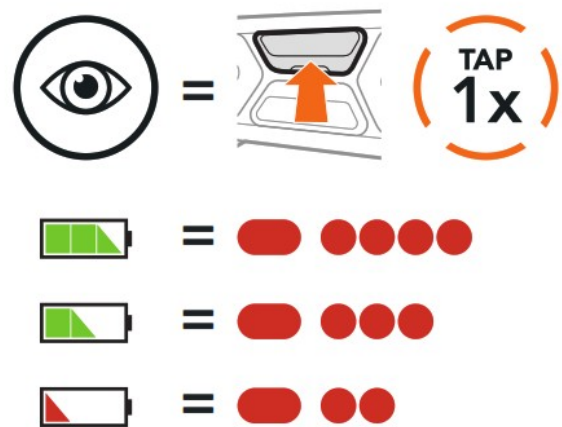
CHECKING THE BATTERY LEVEL

When switching on, the LED flashes red to indicate the charge level.










SC2



SC2 Remote Control



PHONE PAIRING

1.  =   →  "Configuration menu"
2.  =   →  "Phone pairing"
3.  → PIN =

0	0	0	0	0
---	---	---	---	---

MOBILE PHONE

Answer a Call

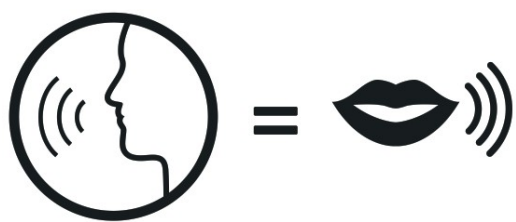


End & Reject a Call



SIRI AND GOOGLE ASSISTANT

Activate the Siri or Google Assistant installed on Your Smartphone



“Hey Google” or “Hey Siri”

or



“[Beep, Beep]”

MUSIC CONTROLS

Play & Pause



=



Track Forward & Backward



=



=



MESH INTERCOM™

When Mesh Intercom is enabled, the SC2 will automatically connect to nearby all other Mesh users and allow them to talk to each other by pressing the Mesh Intercom Button.

Mesh Intercom On & Off



“Mesh intercom on, Open Mesh, Channel 1” or “Mesh intercom off”

OPEN MESH™

When Mesh Intercom is enabled, the headset will be in Open Mesh (default: channel 1) initially. Users can freely communicate with each other in the same Open Mesh channel.

CHANNEL SETTING (DEFAULT: CHANNEL 1)

If the Open-Mesh communication experiences interference because other groups are also using channel 1 (default), change the channel. You can select from channels 1 to 9.

Enter into the Channel Setting



Navigate between Channels

(1 → 2 → ... → 8 → 9 → Exit → 1 → ...)



Save the Channel



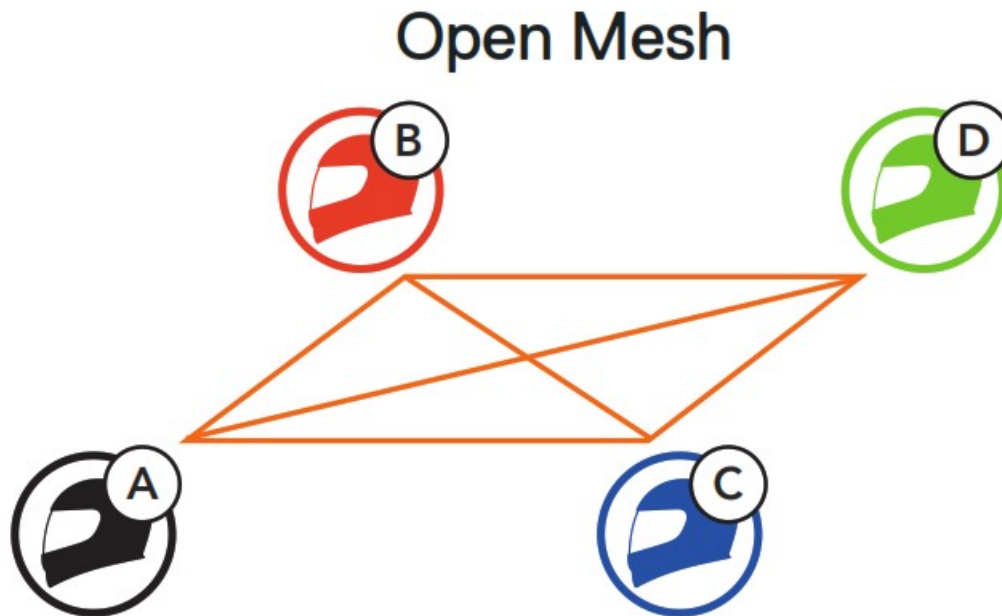
Note: To exit the Channel Setting, tap the (+) Button or (-) Button until you hear a voice prompt, “Exit”, and tap the Center Button.

GROUP MESH™

Group Mesh is a closed group intercom function that allows users to join, leave, or rejoin a group intercom conversation without pairing each headset. Up to 24 users can all be connected in each private group.

CREATING A GROUP MESH

Creating a Group Mesh requires two or more Open Mesh users.

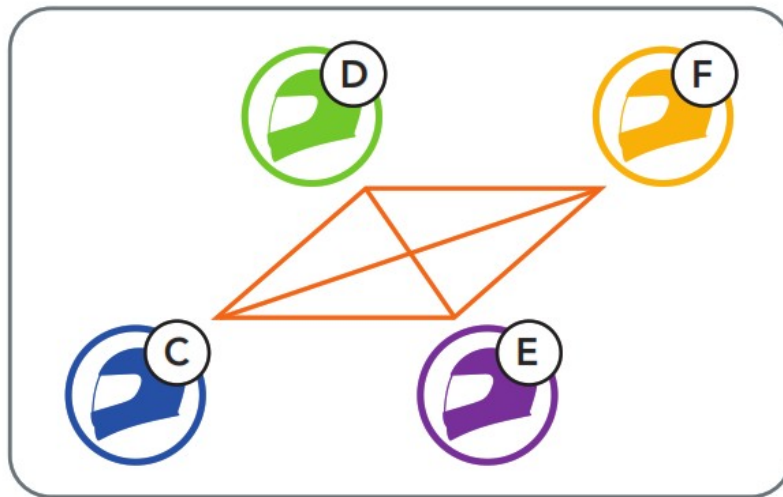


1. You (C) and your friend (D) enter into Mesh Grouping to create a Group Mesh.



2. The headsets complete Mesh Grouping and automatically switch from Open Mesh to Group Mesh.

"Group Mesh"



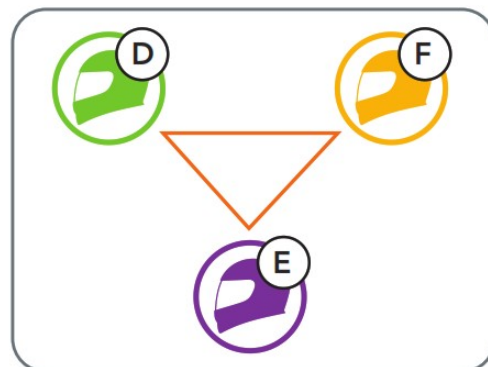
JOINING AN EXISTING GROUP MESH

One of the members in an Existing Group Mesh can allow new members in Open Mesh to join the Existing Group Mesh.

New Members



Existing Group Mesh and Current Members

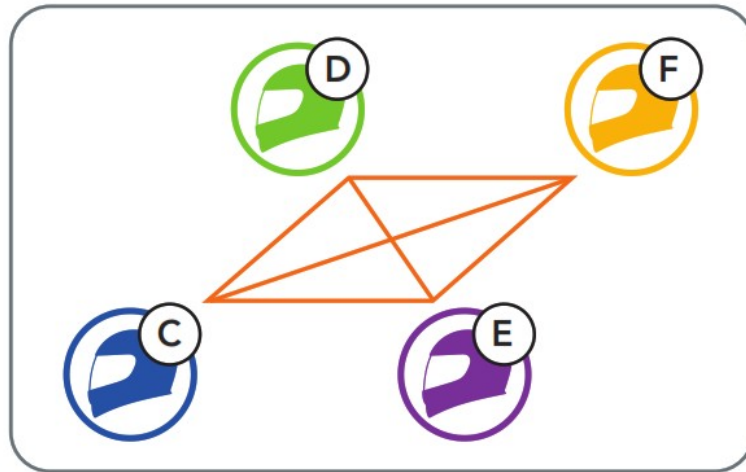


1. One of the current members (E) and a new member (you [C]) enter into Mesh Grouping to join the Existing Group Mesh.



2. The headsets complete Mesh Grouping. The new members will hear a voice prompt as their headsets automatically switch from Open Mesh to Group Mesh.

“Group Mesh”



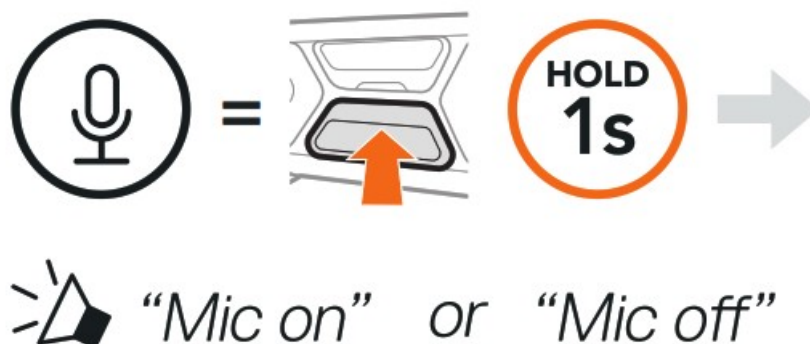
RESET MESH

If a headset in an Open Mesh or Group Mesh resets the Mesh, it will automatically return to Open Mesh (default: channel 1).



ENABLE & DISABLE MIC (DEFAULT: ENABLE)

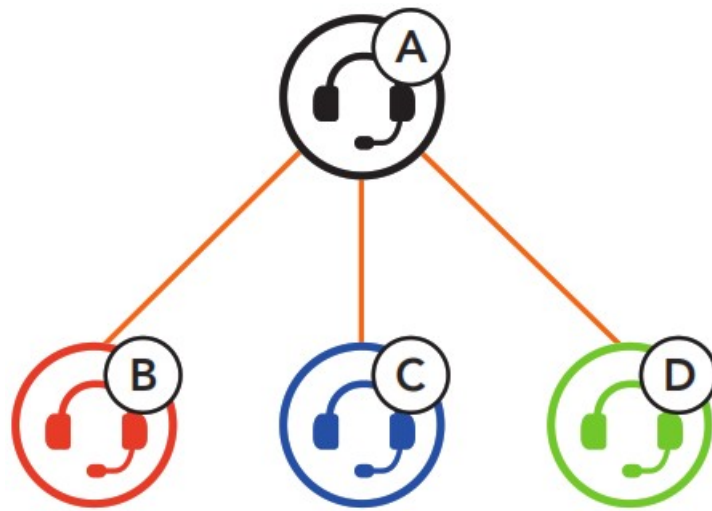
Users can enable/disable the microphone when communicating in a Mesh Intercom.



BLUETOOTH INTERCOM

Up to three other people can be paired with the your headset (A) for Bluetooth intercom conversations.

Intercom Pairing



Pairing with Intercom B



The **SC2** will automatically pair with a Sena headset.

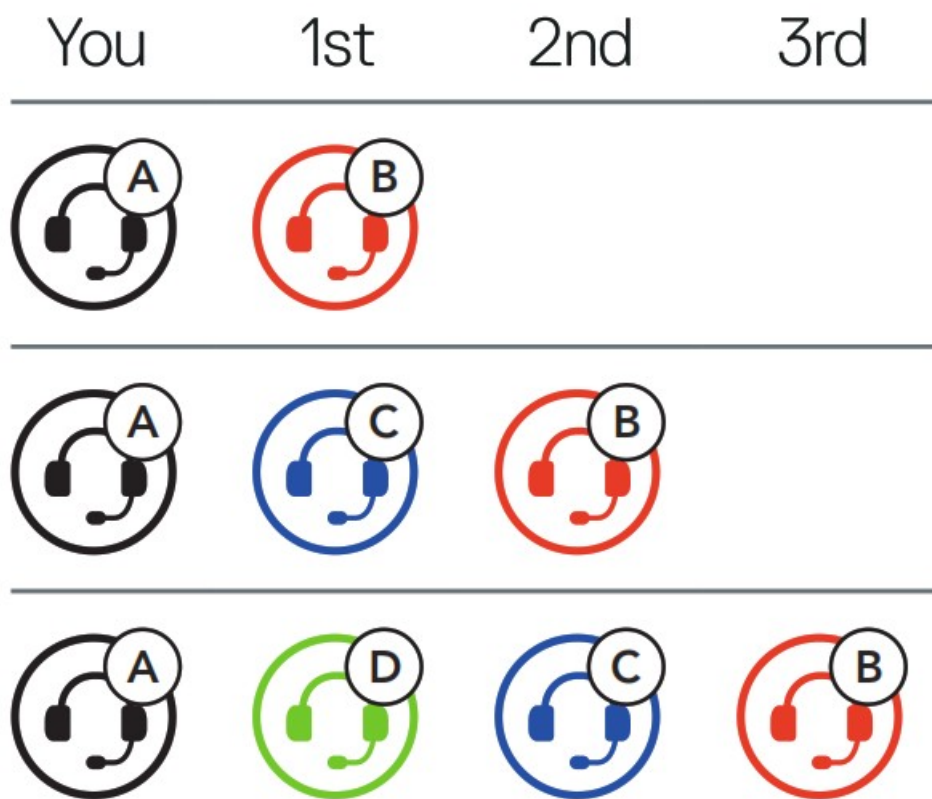


= Flashing blue LED on SC2 (main unit) twice simultaneously confirms intercoms are paired.

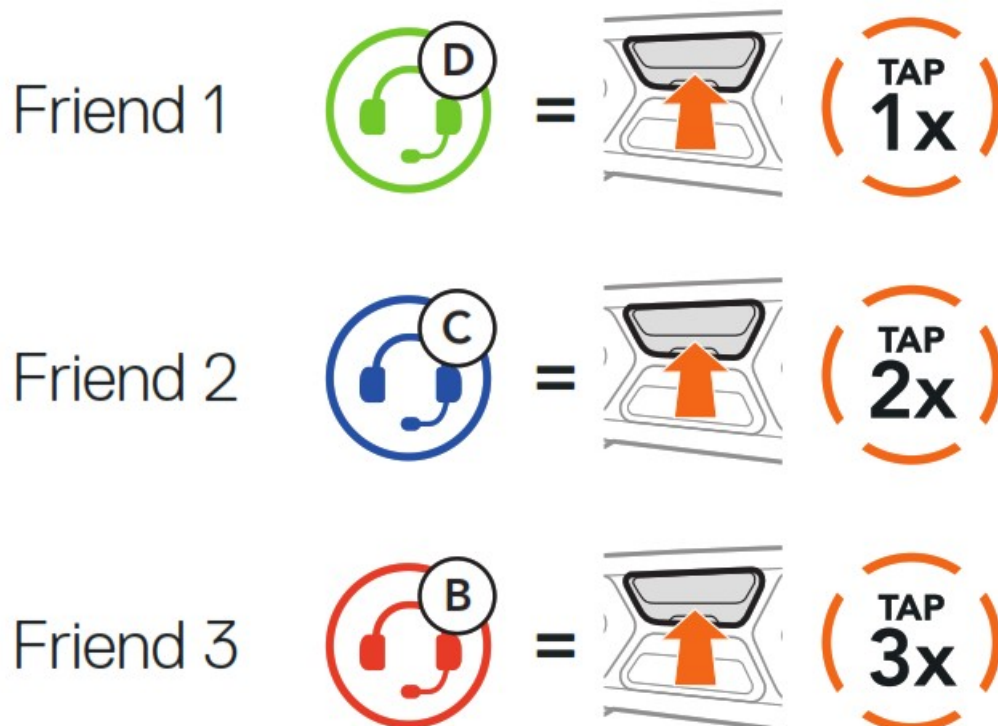
Note: Repeat the step above to pair with Intercom Friends C & D.

TWO-WAY INTERCOM

Last-Come, First-Served



Start & End with Intercom Friend 1-3



FM RADIO

FM Radio On & Off



 “FM on, ###” or “FM off”

Scan Stations & Stop Scanning



Seek Stations



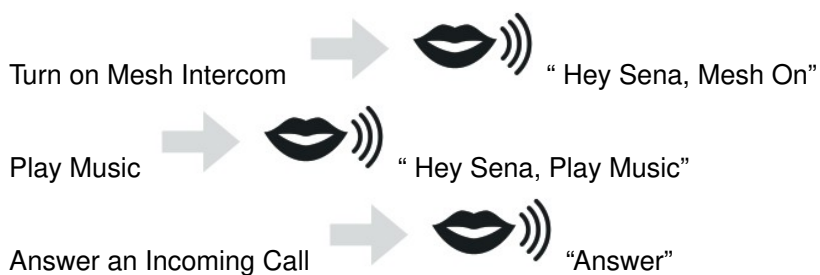
Navigating Preset Stations



Note: You can preset FM stations with the SCHUBERTH SC2 App or the SCHUBERTH Device Manager.

VOICE COMMAND

The Voice Command of the SC2 allows you to operate certain operations by simply using your voice.



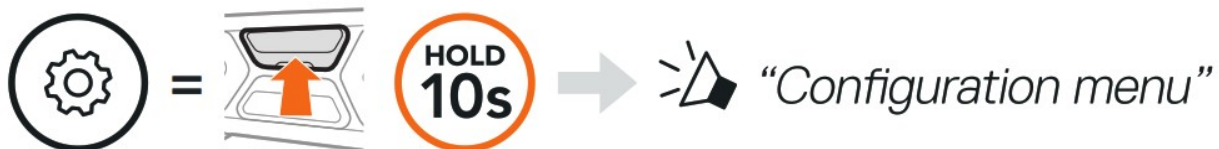
Note: For detailed information including a full list of voice commands, refer to the User's Guide.



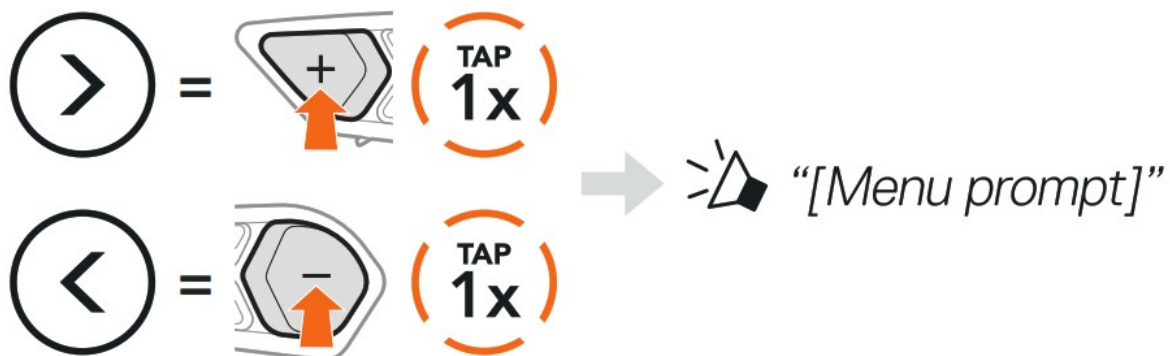
<https://redirects.sena.com/schuberth/sc2/usermanual>

CONFIGURATION MENU

Accessing the Headset Configuration Menu



Navigating Between Menu Options



Execute Menu Options

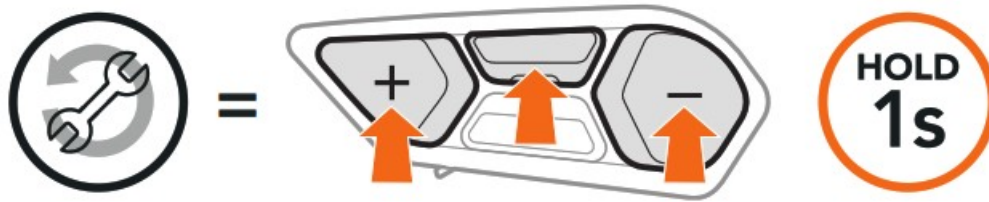


TROUBLESHOOTING

SC2 Factory Reset










SC2 Remote Control Factory Reset

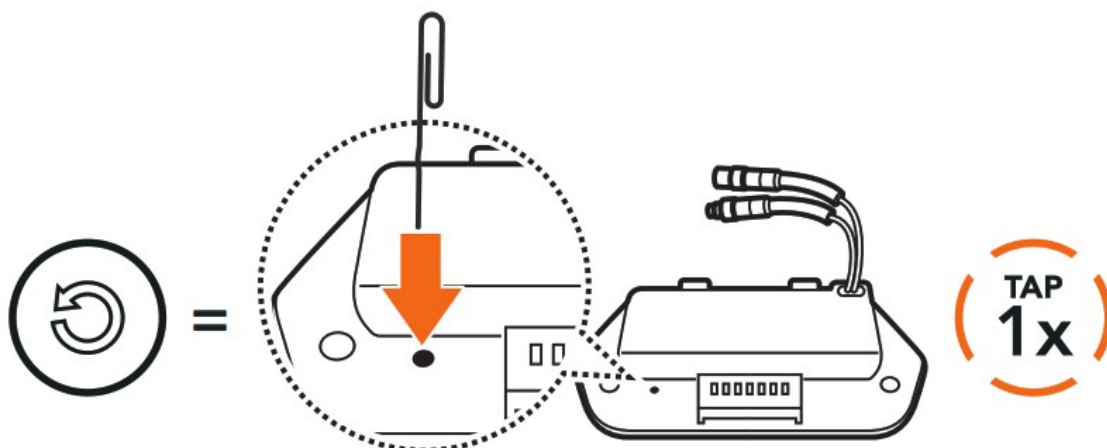


Remote Control Pairing

If you are using the SC2 Remote Control other than the one included in the package, follow the procedure below to pair the SC2 and the SC2 Remote Control.

1.  =  **HOLD 5s** →  *"Remote control pairing"*
2.  =  **HOLD 8s** → 
3. The **SC2** will automatically connect with the **SC2 Remote Control**. →  *"Remote control connected"*

SC2 Fault Reset



Note: Fault Reset will not restore the headset to factory default settings.

QUICK REFERENCE

 Basic Operations	SC2 power on & off	 
	SC2 Remote Control power on	 
	SC2 Remote Control power off	 
	Volume up & down	 or  
 Mobile Phone	Answer phone call	 
	End & reject phone call	 



Siri and Google Assistant

Activate the Siri or Google Assistant



Music

Play & pause



Track forward & backward



or



FM radio on & off



Select preset



FM Radio

Seek forward & backward

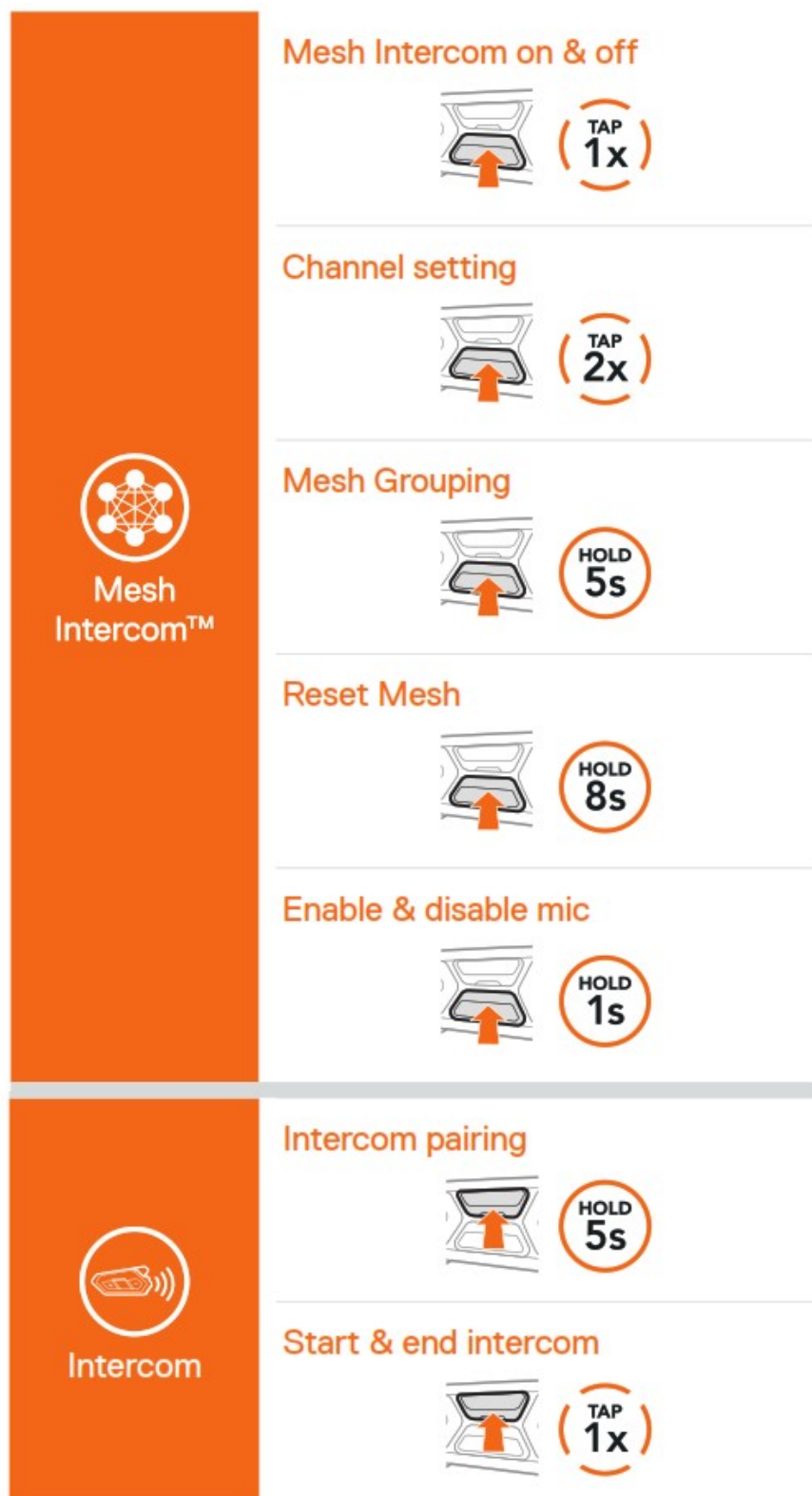


or



Scan up & stop scanning





Producer: Sena Technologies, Inc 19, Heolleung-ro 569-gil, Gangnam-gu Seoul 06376, Republic of Korea


Importer in Europe: SCHUBERTH GmbH Stegelitzer Straße 12 D-39126 Magdeburg, Germany

Importer in US: SCHUBERTH North America 9920 Pacific Heights Blvd., Suite 150 San Diego, CA 92121



Subject to change. No liability for mistakes and errors.

WWW.SCHUBERTH.COM

Documents / Resources

	<p>SSCHUBERTH 20013668 SC2 Communication System [pdf] User Guide 20013668, SC2 Communication System</p>
----------------------------------------------------------------------------------	-----------------------------------------------------------------------------------------------------------------------------

References

-  [SCHUBERTH OEM](#)
-  [SCHUBERTH Helme für Motorrad, Car Racing, Arbeitsschutz, Feuerwehr, Behörden & Militär - SCHUBERTH](#)