



SRhonyra AMD Series Multi Monitor Graphics Card Instruction Manual

[Home](#) » [SRhonyra](#) » SRhonyra AMD Series Multi Monitor Graphics Card Instruction Manual 

Contents

- [1 SRhonyra AMD Series Multi Monitor Graphics Card](#)
- [2 Product Usage Instructions](#)
- [3 Introduction](#)
- [4 System configuration requirements](#)
- [5 Product installation](#)
- [6 Product service cards](#)
- [7 Documents / Resources](#)
 - [7.1 References](#)
- [8 Related Posts](#)



SRhonyra AMD Series Multi Monitor Graphics Card



Specifications

- Product Name: SRhonyra SONGREY Multi-monitor graphics card
- Instruction Manual: AMD series
- Manufacturer: Shenzhen Songrui Technology Co., Ltd.
- Country of Origin: Made in China
- Website: <https://www.szsongrui.com>
- After-sales service email: ovfae@szsongrui.com
- Customer service telephone: (+86)18123649565

Product Usage Instructions

Driver Installation

To install the graphics card driver, follow these steps:

1. Start by decompressing the file package.
2. Wait for the driver package to be automatically decompressed.
3. Click "Agree and Continue" to start installing the driver.
4. Leave all options as default and click "Next", "Accept", and other buttons to proceed with the installation.
5. The driver installation progress will start and finish.
6. After the installation is complete, click "Close" to end the installation.

Multi-screen Usage Settings

The SRhonyra graphics card supports multiple display combination modes: expansion, clone, splicing, and mixing. Follow the steps below to set the desired working mode:

Extended Mode

Extended mode is suitable for applications such as stock trading. Here are the steps to set up extended mode:

1. Install the driver and reboot your computer.
2. Right-click on the desktop or go to Control Panel and select Display Settings.
3. In the Display Settings window, select the desired monitors to be used for extended mode.

Clone Mode

Clone mode duplicates the same content on multiple monitors. Follow these steps to set up clone mode:

1. Right-click on the desktop and select Display Settings from the menu.
2. In the Display Settings window, select the desired monitors to be used for clone mode.

Splicing Mode

Splicing mode combines multiple monitors or projectors into one large screen. This is commonly used in cinemas, stages, museums, hotel lobbies, conference rooms, classrooms, outdoor advertising, and more. To set up splicing mode:

1. Right-click on the desktop and select NVIDIA Control Panel from the menu.
2. In the NVIDIA Control Panel, click on the “Configure Surround, PhysX” tab on the left.
3. Check “Use Surround to span multiple monitors” and click “Configure”.
4. Select the display group arrangement method and arrange the display icons accordingly.
5. Click “Enable Surround” to complete the splicing screen setup.

Frequently Asked Questions

- Q: Where can I download graphics drivers and installation manuals?
A: You can download graphics drivers and installation manuals from our company’s website:
<https://www.szsongrui.com/en/support/>.
- Q: What should I do if I need support or have any questions?
A: You can contact our customer service via email at ovfae@szsongrui.com or call us at (+86)18123649565.

Introduction

Dear users, thank you for purchasing and using our graphics products. This manual only guides quick installation. This manual takes the Windows 10 system as an example, if you need other versions of the use of the method, welcome to visit the our website and download.

For graphics drivers and installation manuals, welcome to visit our company’s website and download

- Website: <https://www.szsongrui.com/en/support/>
- Manufacturer: Shenzhen Songrui Technology Co., Ltd.
- Country of Origin: Made in China
- Website: <https://www.szsongrui.com>
- After-sales service email: ovfae@szsongrui.com

- Customer service telephone: (+86)18123649565

System configuration requirements

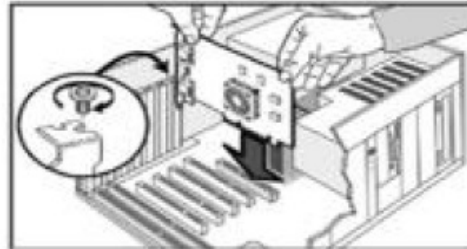
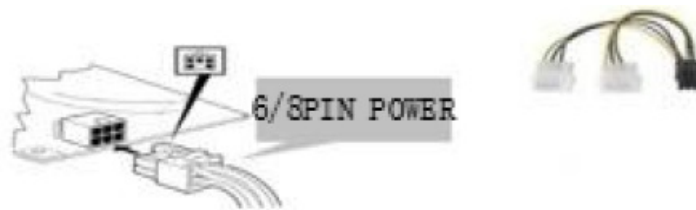
- processor Intel Pentium 4, AMD Athlon or above or compatible processor
- mainboard Has a PCI Express X16 graphics interface board
- memory 1GB or more of memory
- power supply Above 300W, you must use a power supply with a power rating greater than or equal to your overall power requirements
- monitor For monitors of 17 inches or above, the input interface must be consistent with the output interface of the display card
- operating system Windows XP/7/10/11 (Some graphics cards do not support Win 11)

Product installation

The multi-screen video card installation process varies slightly from the normal video card, it depending on whether the video card is installed in the PC for the first time or whether the existing video card is replaced. If replacing the original graphics card, please notice that to uninstall the old graphics driver from the operating system first to avoid conflicts with the new video card.

Hardware installation

1. Static electricity will seriously damage the electronic components on the graphics card, please try to avoid contact with the parts on the graphics card. Before installing the graphics card, please touch metal conductive objects, such as metal railings, aluminum alloy windows, etc., to release the static electricity on your body and ensure that your body is free of static electricity.
2. The graphics card is easily damaged during transportation. When you notice obvious damage to the graphics card, do not turn on the power.
3. When you install or remove the graphics card, be sure to turn off the power of the computer first.
4. Harsh environments such as dusty, humid and high temperature will affect the Service life of the graphics card, so please try to avoid using this product in these environments.
5. Fasten the screws to secure the bezel, reconnect any cables you disconnected during installation, and install the cover.
6. Connect the graphics card output interface and monitor, and start the computer.



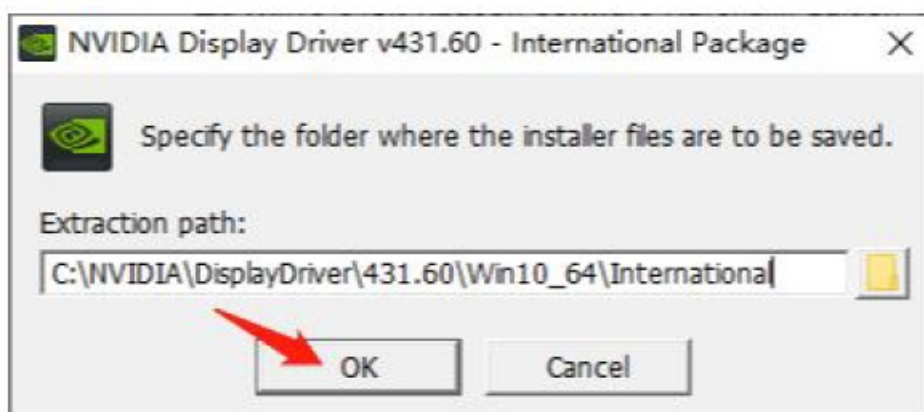
Start the installation

1. Please confirm that the computer power is turned off and unplug the power cord.
2. Remove the case cover, select the PCI Express slot to be installed, and remove the metal back plate. Unscrew the screws if necessary to remove the original graphics card. III. Insert the graphics card into the slot until it is completely fixed. If necessary, please connect the external power cord. (*High-end graphics cards usually have an auxiliary power connector, make sure the auxiliary power is properly connected.)

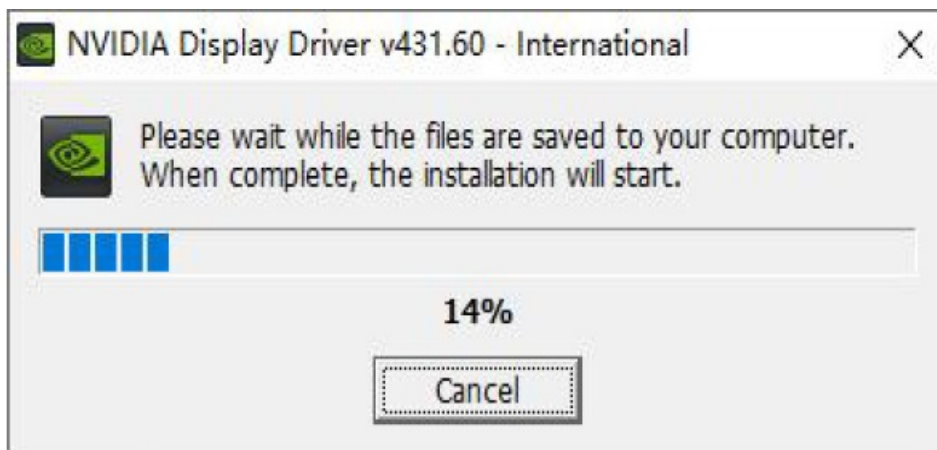
Driver Installation

According to the model you purchased and the operating system you are using, it is strongly recommended to download the corresponding drivers from the official website of SRhonyra. These drivers have been tested by SRhonyra Technology to ensure the normal use of the graphics card.

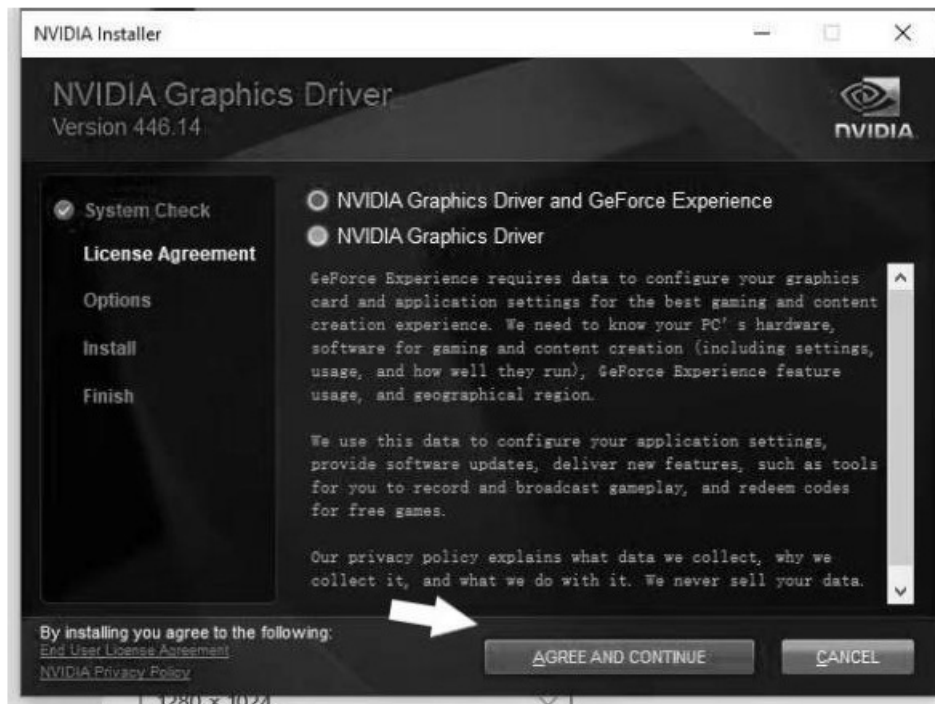
1. Run the driver downloaded from SRhonyra 's official website, click "OK" to start decompressing the file package...



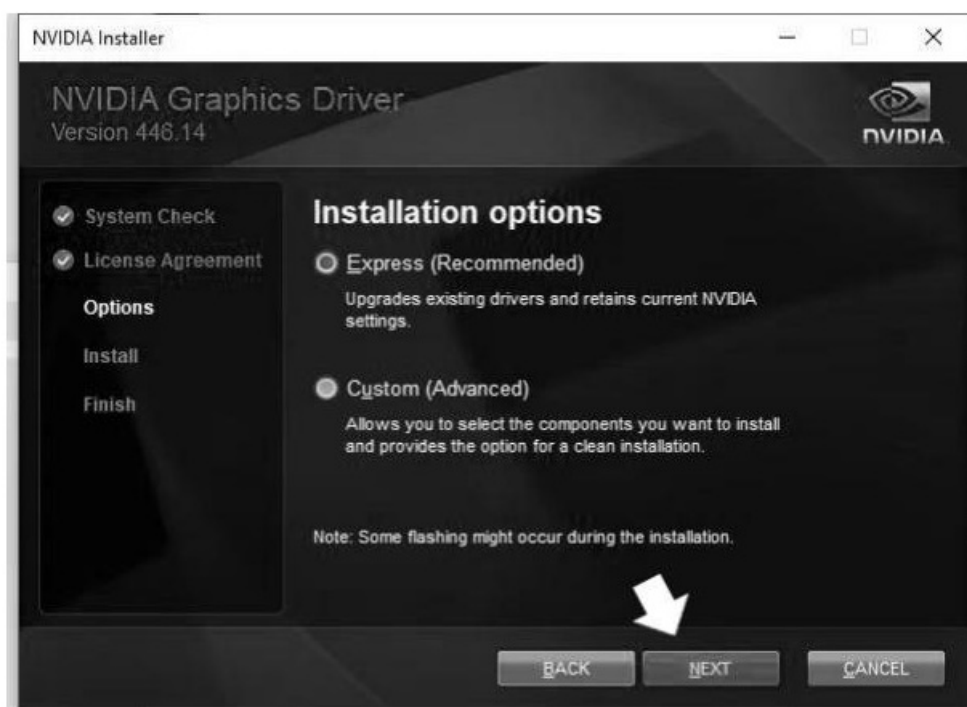
2. Wait for the driver package to be automatically decompressed:



3. Click "Agree and Continue to start installing the driver.



4. Just default all options, click "Next", "Accept" and other buttons to operate.



5. The driver installation progress starts and finishes...



6. After the installation is complete, you can click “Close” to end the installation.



Multi-screen usage settings

SRhonyra graphics card supports multiple display combination modes, four working modes: expansion, clone, splicing and mixing, and set the corresponding working mode according to different application requirements to achieve the best use effect

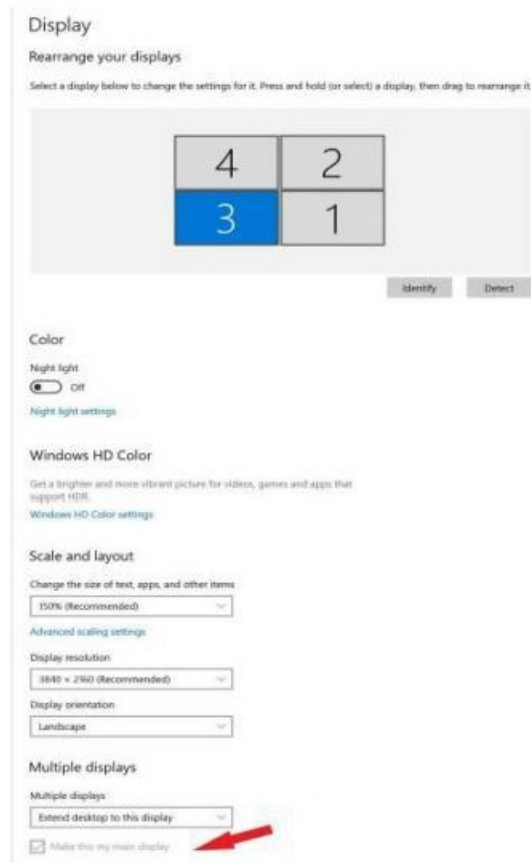
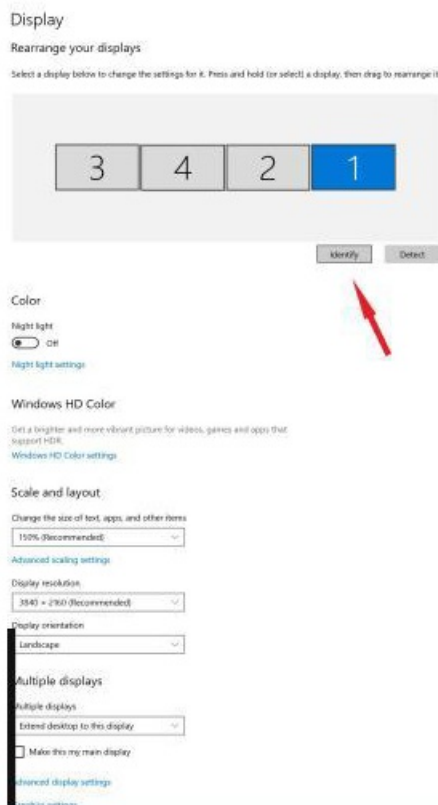
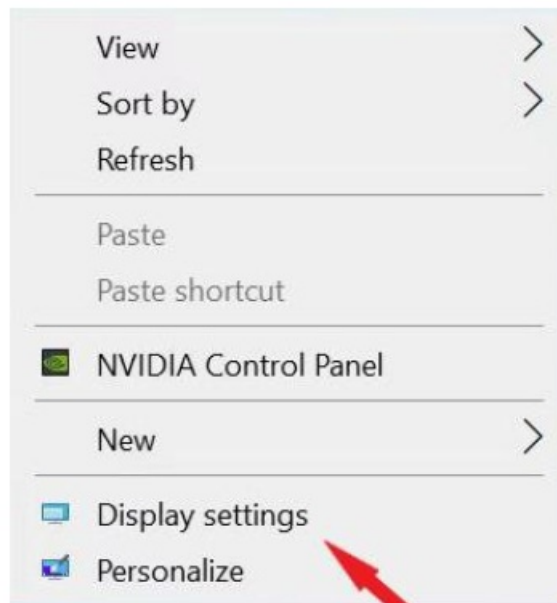
Extended Mode

The multi-screen expansion mode is usually suitable for applications such as stock trading, design, and accounting office. The expansion mode is to extend the desktop on the main monitor horizontally or vertically, and add a desktop for each additional monitor. Usually there is no start menu and taskbar and no desktop icons on the extended desktop, just the desktop background on the main monitor. The difference from copying the desktop is that you can play video files on the extended desktop and do other things on the main monitor without interfering with each other. To make it easier to use a multi-screen desktop, it is necessary to make some settings, especially that the desktop position corresponds to the physical placement of the monitor.

Here we take SRhonyra SR750 four-screen graphics card and Windows 10 system as an example to set, other graphics cards or systems are similar.



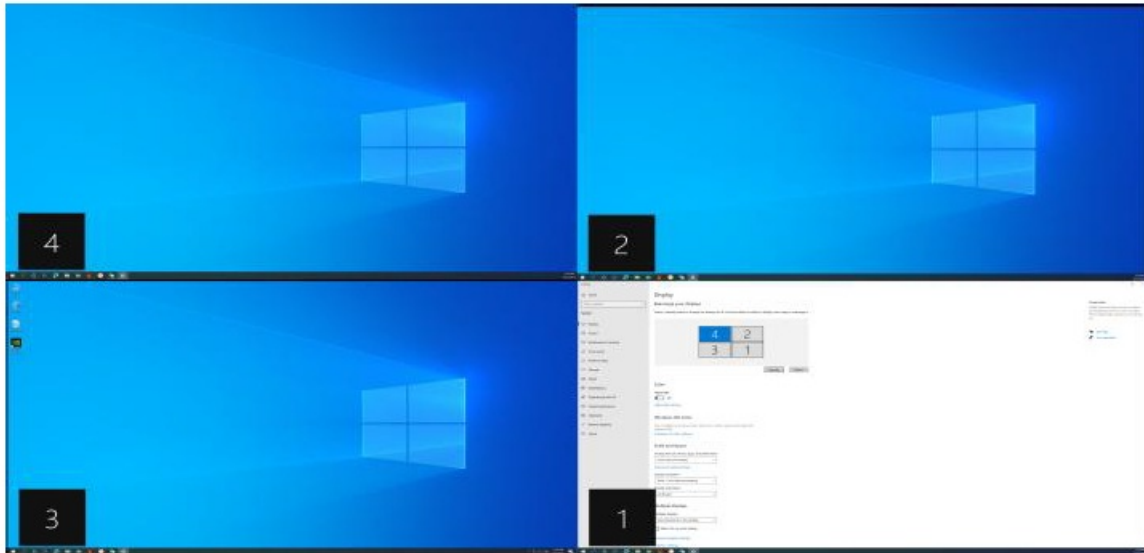
1. Usually after installing the driver and rebooting, you can open Display Settings by right-clicking on the desktop or in the Control Panel:
2. Click “Display Settings” to open the following window :



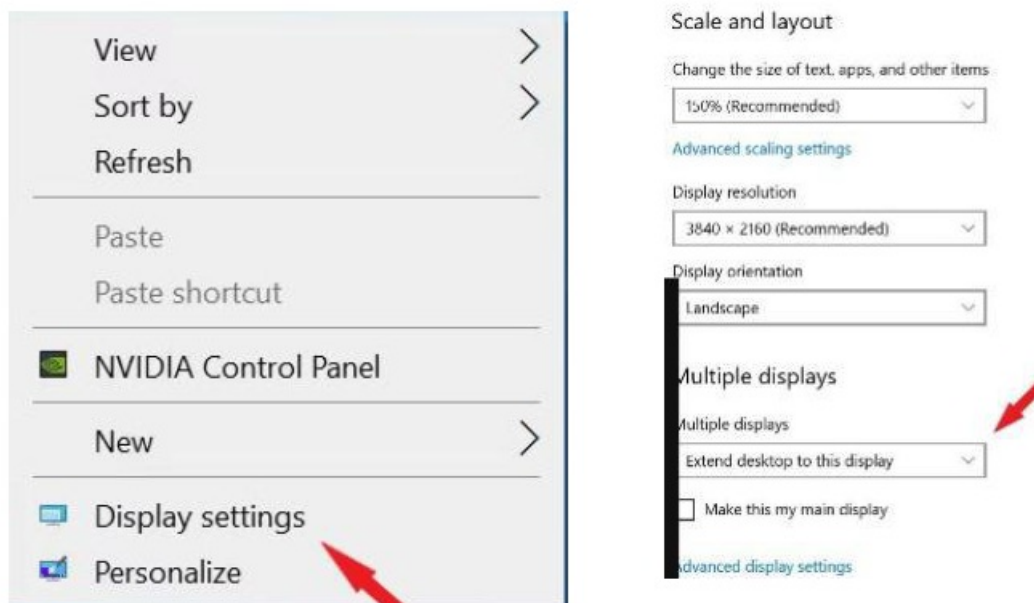
By default, the icons of the monitors are arranged in a line, but usually the user's monitors are physically placed in 2 rows and 2 columns, which requires dragging and arranging the icons of the monitors to match the actual placement. Click the “Identification” button, the four screens will display 4 identification numbers respectively, drag and drop the icons of the display in the picture to correspond to them according to the identification numbers, and click to select one of the convenient ones as the main display, and check the “Settings” in the “Main Display” option is applied to complete the location setting. After the display arrangement is set, the mouse can flexibly move up, down, left and right between the screens, drag windows and other operations. When the display icons are stacked and arranged, they fit together, and the seams cannot be different in size.

Clone Mode

Clone Mode is to set all monitors to display the same desktop content, which is usually used in restaurants, waiting rooms, etc. This setting needs to be done with the help of a powerful driver console.

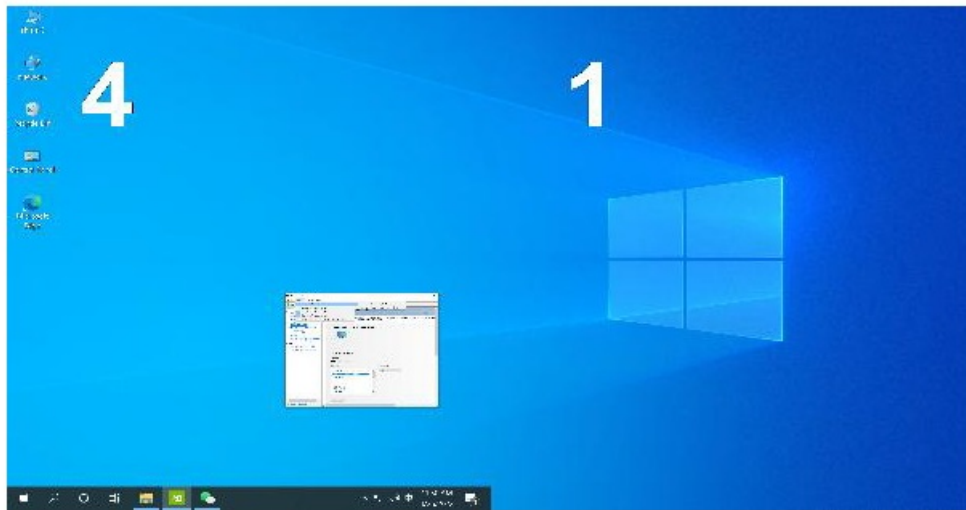


1. Right-click on the desktop and find “Display Settings” in the menu, as shown in the figure:
2. Click the “Multi-Monitor Settings” column, and select the copy target monitors one by one, until the desired number of copies and target monitors are set.

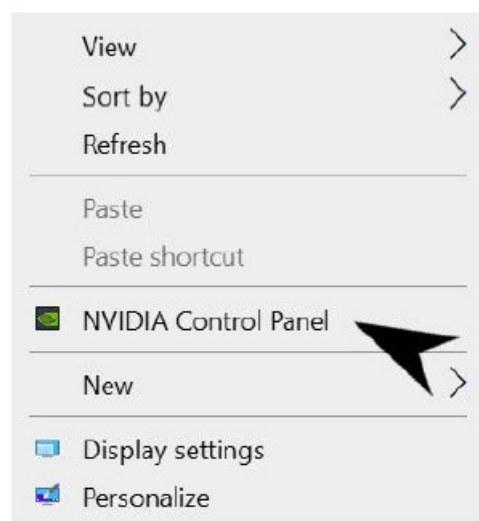


Stitching mode

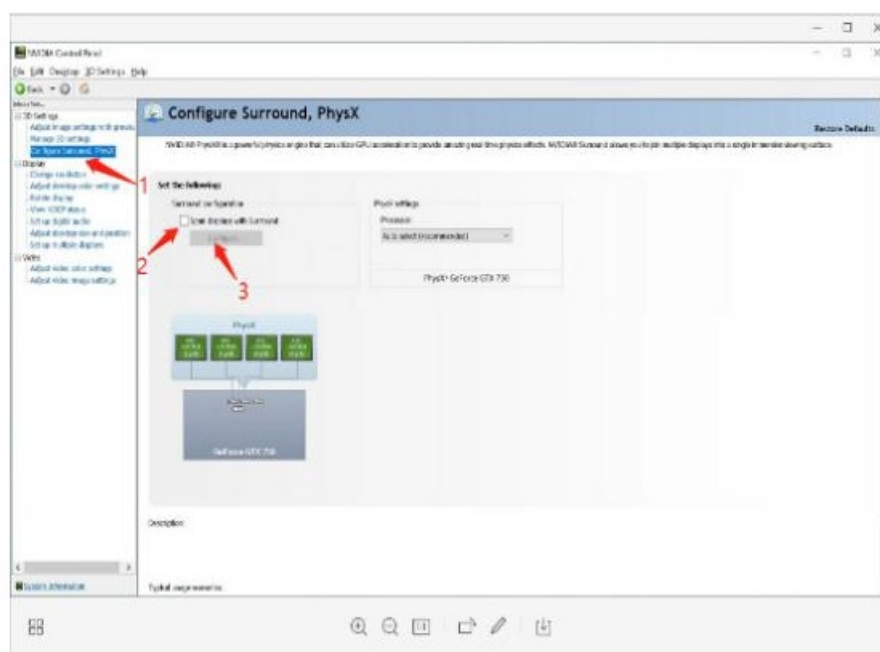
The splicing mode is to splic all monitors or projectors into a large screen, each monitor displays a small piece of the screen, and the splicing and combination become a complete picture. Through this function, small screens can be formed into large screens for demonstration, usually applied it is widely used in cinemas, stages, museums, hotel lobbies, conference rooms, classrooms, outdoor advertising and other places. The setting method is as follows:

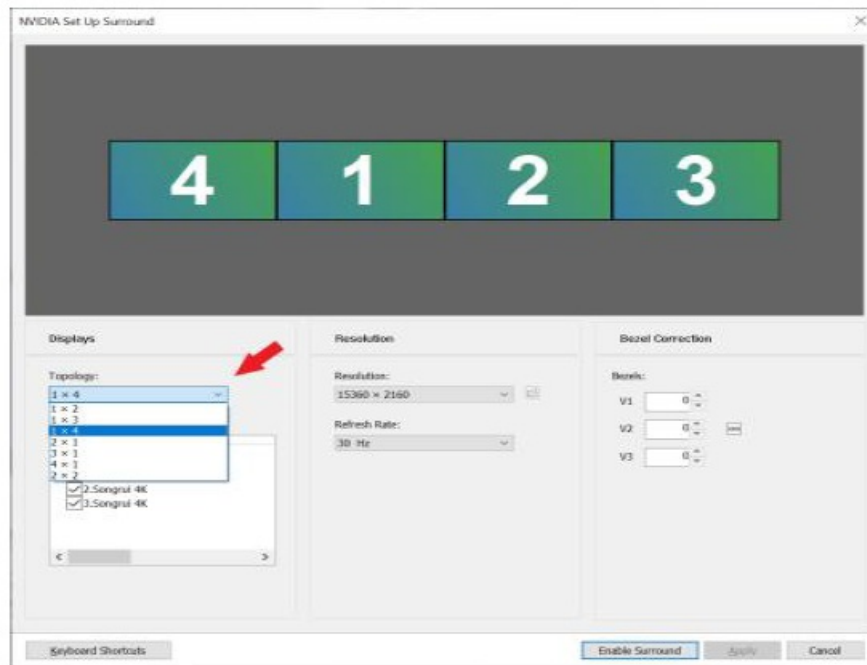


1. Also right-click on the desktop and find “NVIDIA Control Panel” in the menu to open the driver’s control panel, as shown in the figure:

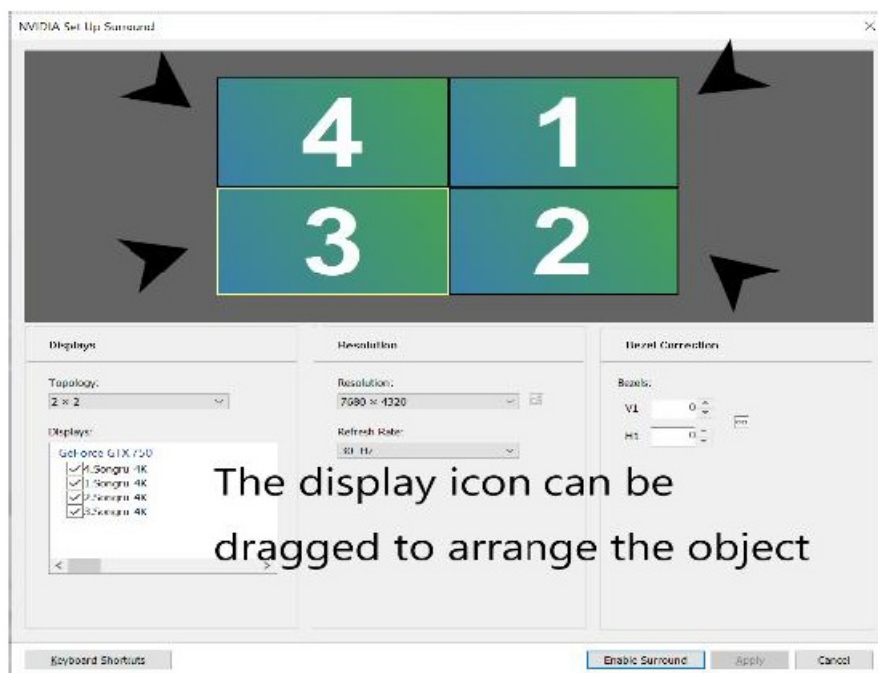


2. Click the “Configure Surround, PhysX” tab on the left in turn, the following window will appear, check “Use Surround to span multiple monitors”, Click “Configure”, and enter the setting Surround window, as shown in the figure:



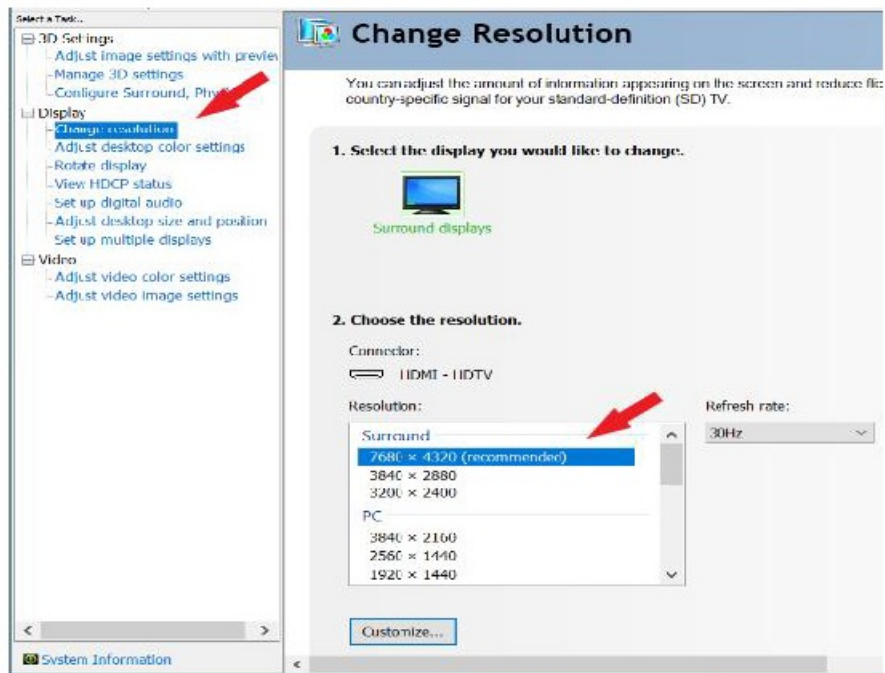


3. Select the display group arrangement method, then a number will be displayed on each display screen. If the position is incorrect, you can use the mouse to drag the display icon in the picture to arrange it, and click “Enable Surround” to complete the splicing screen.



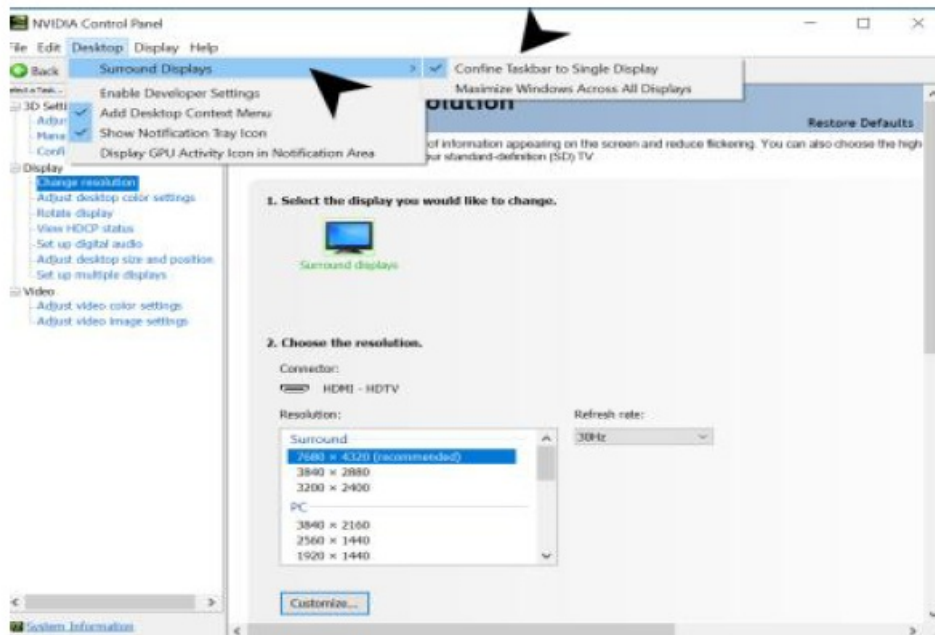
4. Change Surround Desktop Resolution:

If necessary, select the appropriate one in the Surround item in “Display” -“Change Resolution”, the resolution in the PC column will affect the mosaic display.



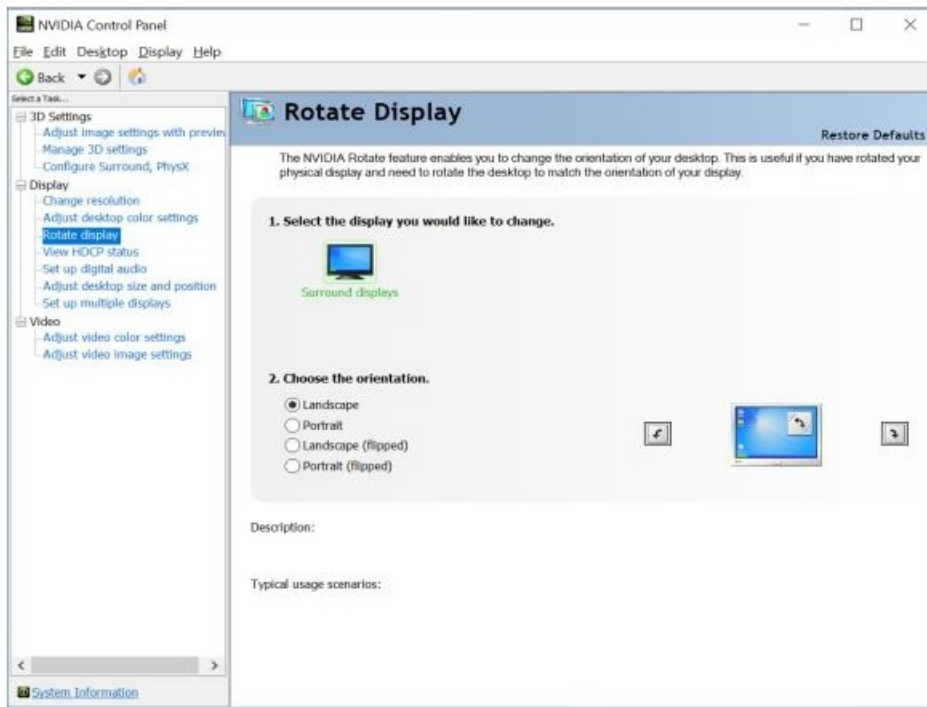
5. Stitched desktop settings:

According to the needs of use, select various functions in the menu to optimize the use environment.



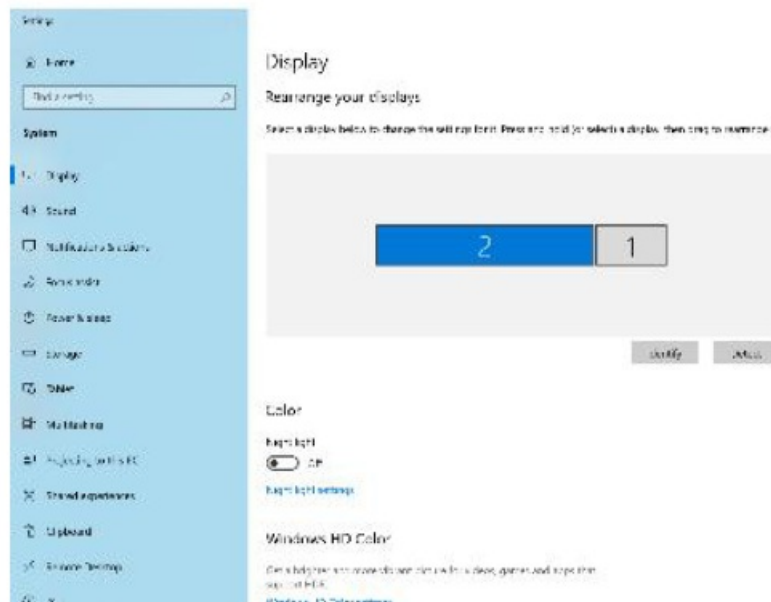
6. Rotate the desktop:

If you need to use a solid screen placement, you can operate the rotation before or after enabling Surround.



Blend Mode

This mode is composed of splicing and expanding or expanding and duplicating 2 modes. Mixing of splicing and duplicating modes is not supported. This function can realize splicing a large screen as a display, and a single monitor as a system console to facilitate management and control of the displayed content, which is very practical. The setting method takes the SRhonyra 4-screen graphics card as an example, connect 4 monitors, create a 1×3 Surround monitor group (splicing screen mode) with 3 monitors, and another independent monitor and the Surround monitor group form an expansion mode, independent the monitor is set as the main monitor, and the monitor group is an extended screen to achieve “1×3+1 combination”. For detailed settings, please refer to the above setting methods for splicing mode and expansion mode.



Product service cards

Dear users, thank you very much for choosing and purchasing SRhonyra Technology Company products. Please fill in the contents of this voucher, and please submit it to the seller for confirmation, please keep this voucher properly. So that you can get the national standard service we provide in time.

User name		Contact number	
Sales units		Date of purchase	
Product model		Product serialnumber	
Dealer stamp			

Description of the name and content of harmful substances in the product:

Remarks: The Company reserves the right to amend and finally interpret the obligations

The part name	Hazardous substances					
	Lead (Pb).	Mercury (Hg).	Cadmium (Cd).	Hexavalent chromium (Cr(VI)).	Polybrominated biphenyls (PBB).	Polybrominated diphenyl ethers (PBDE).
Circuit board and its components	X	○	○	○	○	○
Connectors and wires	X	○	○	○	○	○

This form has been prepared in accordance with the provisions of SJ/T 11364.

○ : Indicates that the content of the hazardous substance in all homogeneous materials of the part is below the limit requirements stipulated by GB/T26572.

X: Indicates that the content of the hazardous substance in at least one of the homogeneous materials of the part exceeds the limit requirements specified by GB/T26572. However, the part still complies with the specifications of EU Directive 2011/65/EU.

Note: The environmental protection period refers to the general normal use conditions.

Product certification

Manufacturer: Shenzhen Songrui Technology Co., Ltd.

Country of Origin: Made in China

Customer service telephone: (+86)18123649565

Due to rapid technology change, some of the specifications might be out of date before publication of this manual. The author assumes no responsibility for any errors or omissions that may appear in this document nor does the author make a commitment to update the information contained herein.

Copyright by Shenzhen Songrui Technology Co., Ltd. No part of this manual may be reproduced or transmitted in any form without the expressed, written permission of Shenzhen Songrui.

To reduce the impacts on environment, the product package does not include a driver disc.

Documents / Resources

<p>SRhonyra SONGREY</p> <p>Multi-monitor graphics card Instruction manual AMD series</p> <p>introduction</p> <p>Dear user, thank you for purchasing and using our graphics products. This manual only guides quick installation. This manual takes the AMD series 2D screen as an example. If you need other versions of the use of the product, reference to the use of our website and download.</p> <p>For graphics drivers and installation manuals, please go to the AMD website or your computer manufacturer.</p> <p>Copyright © 2015, SONGREY Technology Co., Ltd. Country of origin: China Created by: SONGREY Technology Co., Ltd. All rights reserved. No part may be reproduced without permission. Customer service telephone: 1-800-333-0666</p>	<p><u>SRhonyra AMD Series Multi Monitor Graphics Card</u> [pdf] Instruction Manual</p> <p>AMD Series, AMD Series Multi Monitor Graphics Card, Multi Monitor Graphics Card, Monitor Graphics Card, Graphics Card, Card</p>
---	--

References

- [ltd.no](http://www.ltd.no)
- [SR](http://www.sr.no) _____
- [SR](http://www.sr.no) [Support--Songrey Co.](http://www.sr.no)
- [User Manual](#)

[Manuals+](#), [Privacy Policy](#)