



SPY GADGETS LS011 Hidden WiFi Camera in PIR Sensor User Guide

[Home](#) » [SPY GADGETS](#) » SPY GADGETS LS011 Hidden WiFi Camera in PIR Sensor User Guide 

Contents

- [1 SPY GADGETS LS011 Hidden WiFi Camera in PIR Sensor](#)
- [2 Quick guide of Wi-Fi camera function](#)
- [3 Overview](#)
- [4 In the box](#)
- [5 Product structure](#)
- [6 Wi-Fi Camera Connection Setting](#)
- [7 Camera Normal Status](#)
- [8 APP Introduction](#)
- [9 Specification](#)
- [10 FAQ](#)
- [11 Documents / Resources](#)
- [12 Related Posts](#)



SPY GADGETS LS011 Hidden WiFi Camera in PIR Sensor



Quick guide of Wi-Fi camera function

1. Download & Install Free App <CamSC> from App Store or Google Play;

Tips: Please allow “CamSC” to notification, Bluetooth and location while using the App.

2. Enter App, select your region at the top right corner and register;

Tips: If a code doesn't arrive, please check the spam folder first.

3. Take off back cover->Insert micro SD card -> Turn back ON/OFF switch, press reset key 4 seconds til a beep sound (Pairing mode is ready now).

4. Enter App, Click + >> Smart Home >> Pairing Mode >> Click device name >> Select Wi-Fi >> Input password > NEXT.

5. Device online in around 10 seconds & Wi-Fi live video is ready.

P.S.: Contact local dealer for tutorial video setting up.

Overview

The Ultra Long Standby WiFi Security Camera, it is built with high tech of super low power consumption 450 A/hour to save energy for around 1 year standby after being fully charged.

First, it can be used for watching live streaming video day and night (night vision around 5 meters), or taking photo and video by APP in smart-phone remotely after WiFi connected; Second, its PIR sensor will make precisely motion detect recording for surveillance use (around 5 meters distance and 2 meters height). Also, it has cycle recording and work when charging.

Usages: Nanny camera, Home/ Shop/ Office/ Warehouse surveillance camera.....

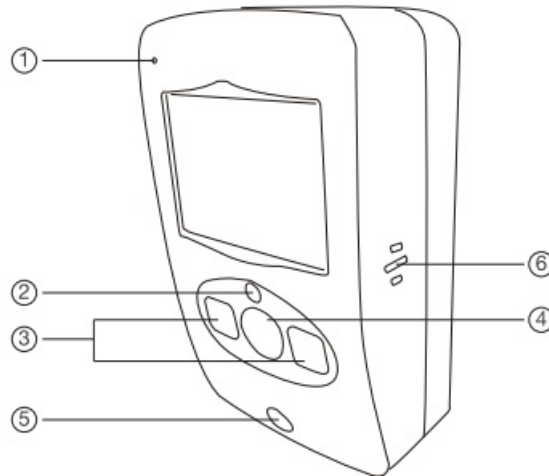
Warning: " illegal use is not allowed! Or, there will be consequences to bear! "

In the box

- 1 x Camera Unit
- 1 x USB Cable
- 1 x Micro SD Card Reader
- 1 x User Manual

- 1 x Bracket Accessories

Product structure

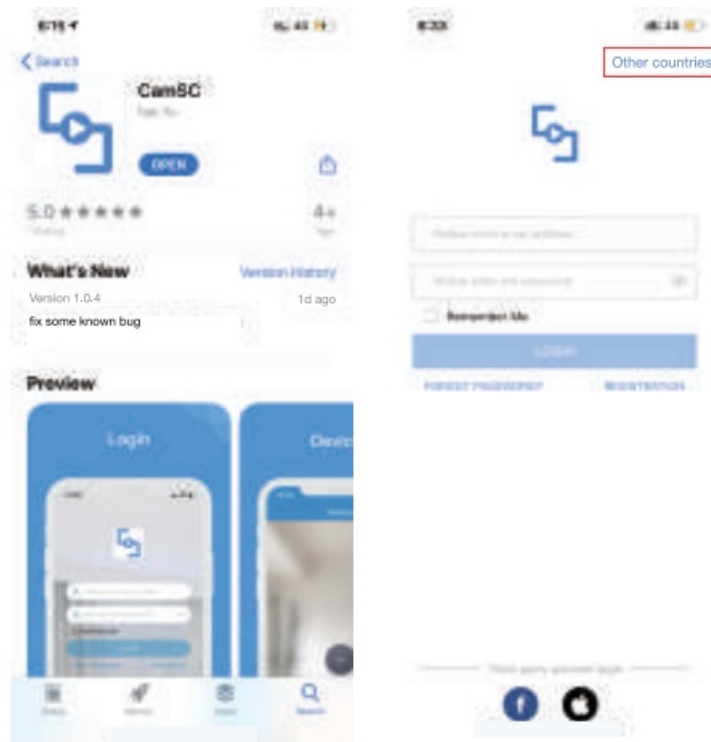


1. Microphone
2. Light sensor
3. Invisible night vision leds
4. Camera
5. PIR sensor
6. Camera speaker

Wi-Fi Camera Connection Setting

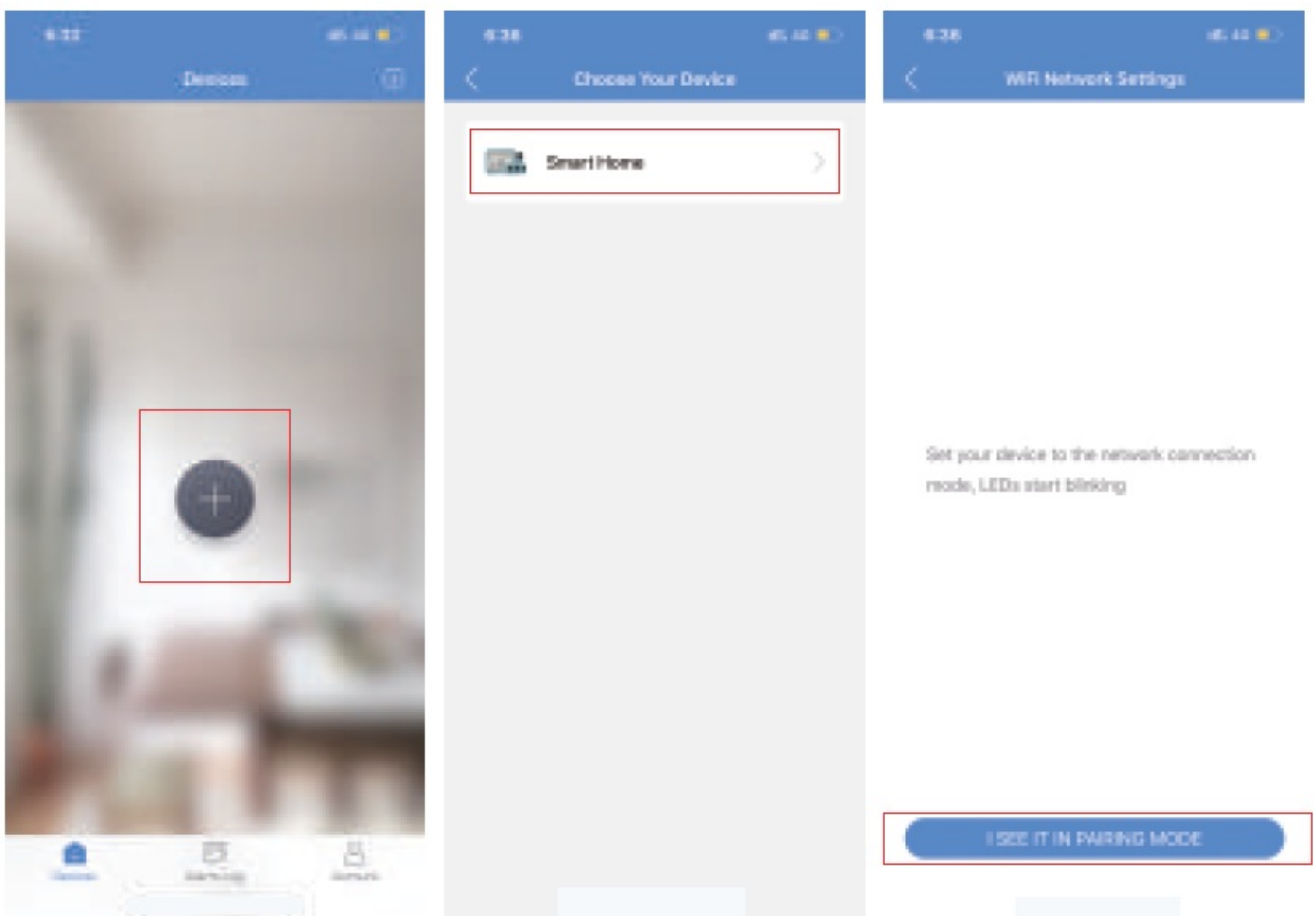
Step1: CamSC APP

1. Scan below QR code or search and download free APP named <CamSC> in Apple APP store, Google play or Electronic market, and install it:
2. Open APP CamSC, select current region at the top right corner. Register with email, or third-party account like Facebook or IOS account. (Tips: If a code doesn't arrive, please check the spam folder first.)

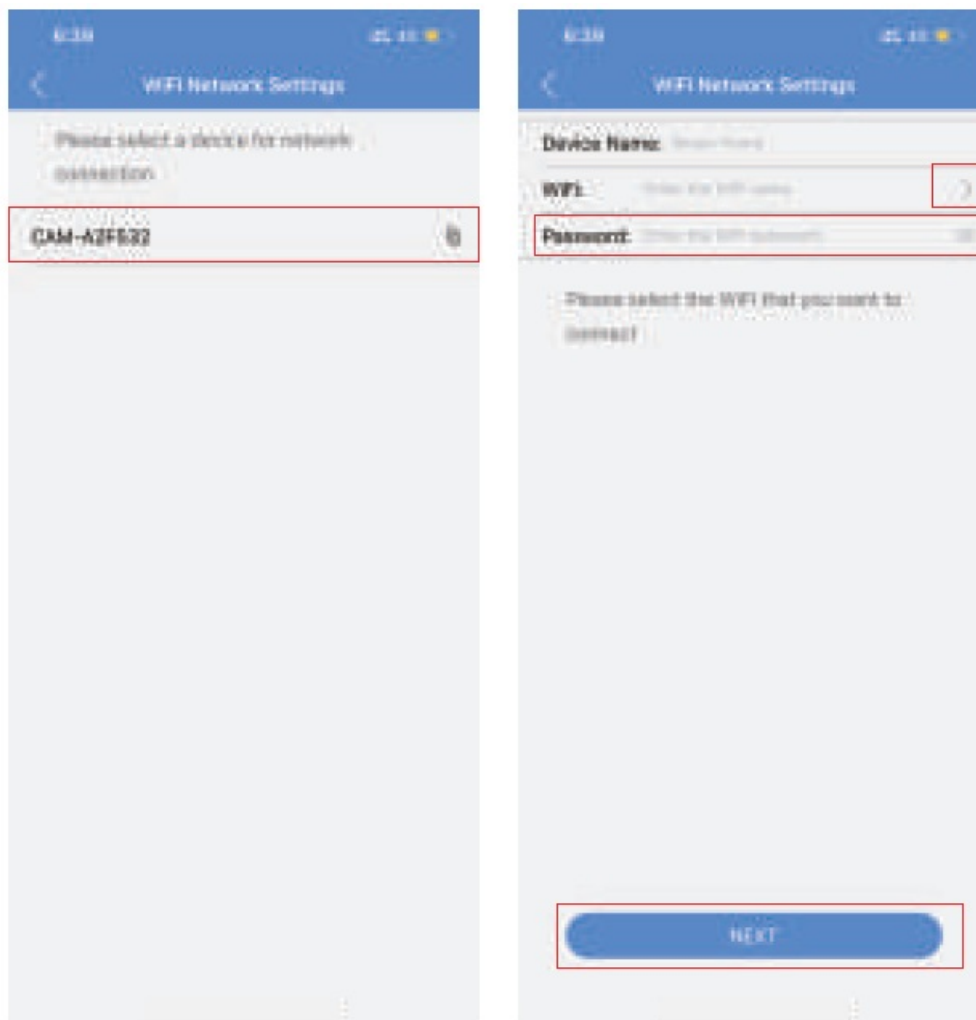



Step 2: Take off back cover → Insert micro SD card → Turn back ON/OFF switch (WiFi indicator is solid blue.);
Step 3: Connect WiFi

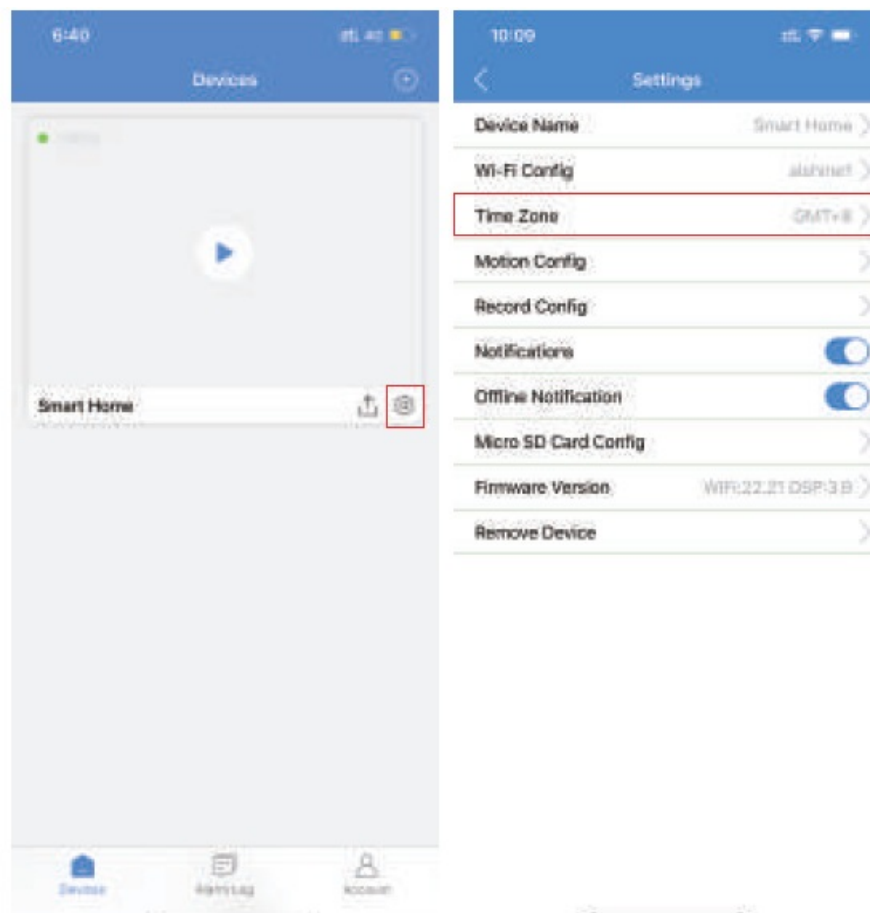
1. Press Reset key 4 seconds till a beep sound(WiFi indicator blink slowly and ready for pairing WiFi);
2. Open APP CamSC >> Click + >> Smart Home >> Device in pairing mode >> CAM-xxxxxx.



3. Click > at the end of WiFi to select the local router WiFi, then input password.
 Click NEXT and wait around 10 seconds to finish the configuring; Device Binding Successful and online now.



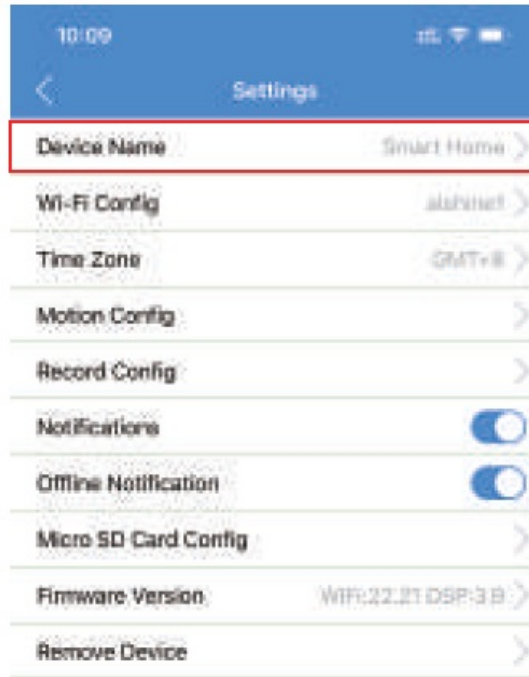
4. Click  in APP'S first interface, select Time Zone and choose Time Zone to ensure live streaming video with the set time zone.



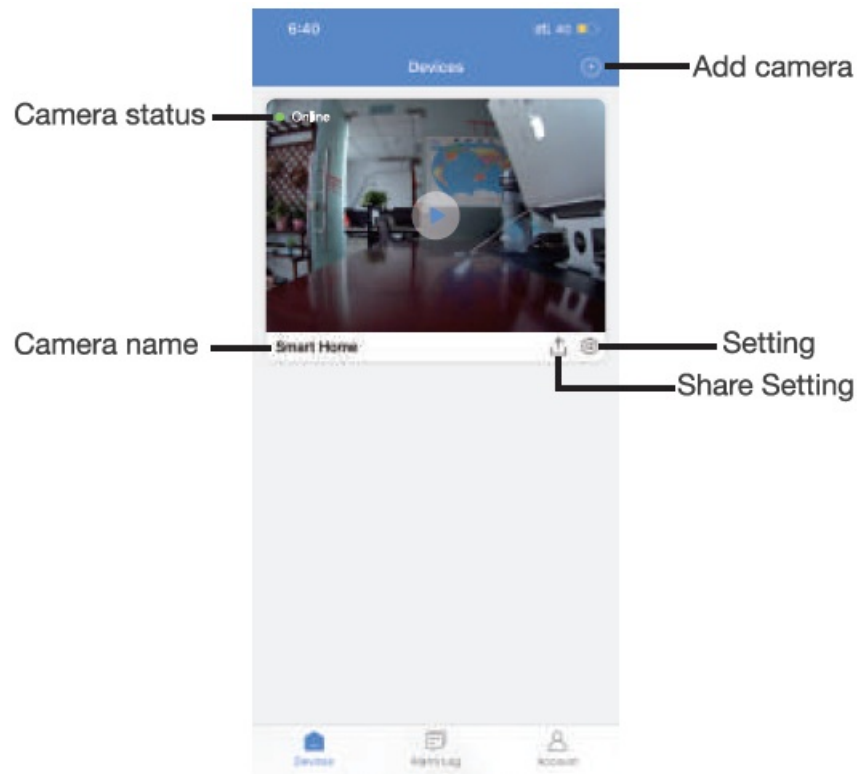
Camera Normal Status

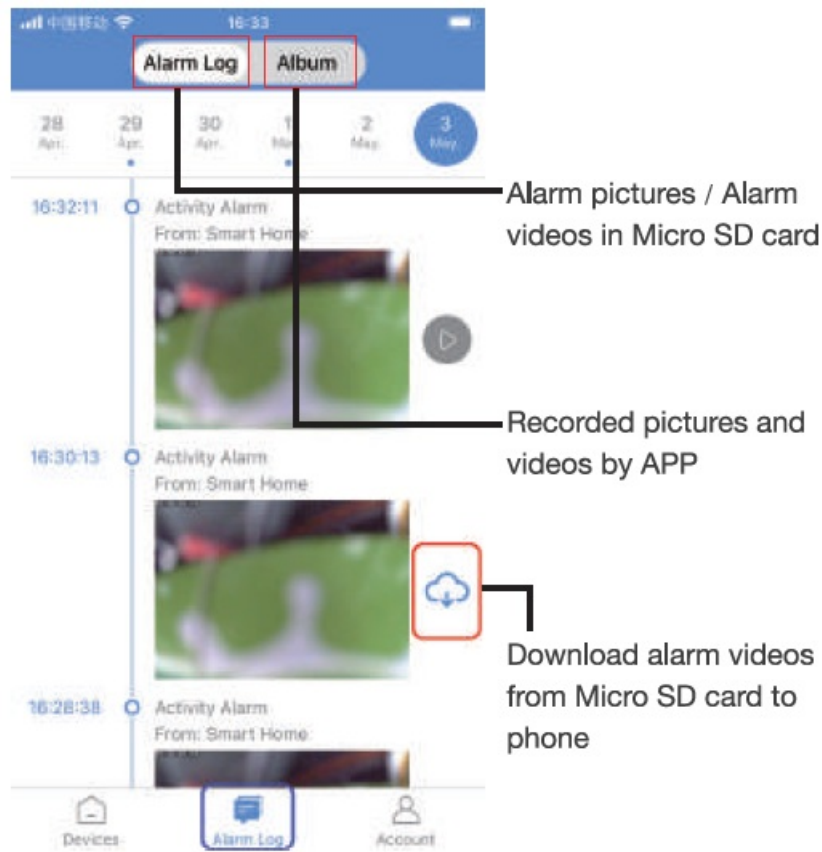
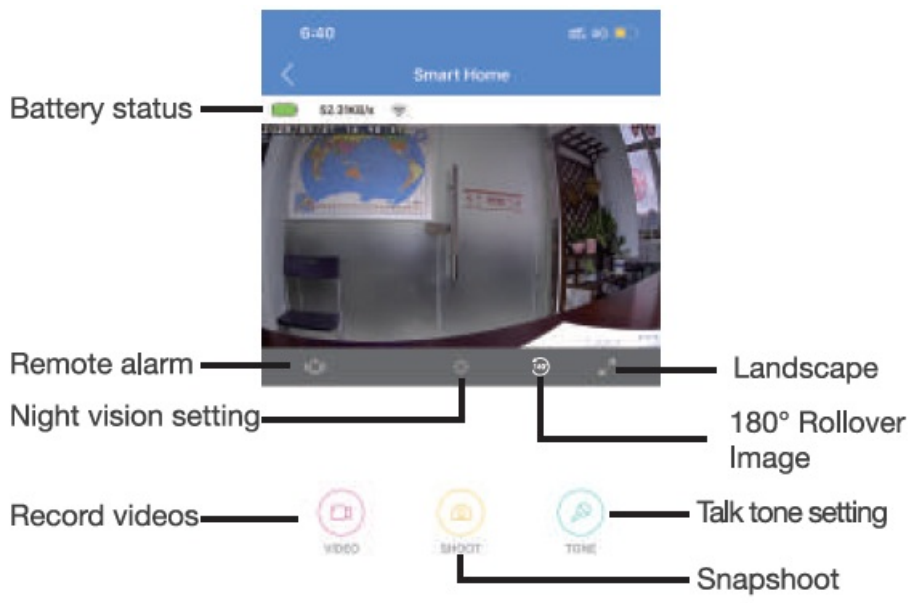
1. Camera always in standby mode;
2. Once motion detected, it will push a notification to phone, do a snapshot and record a 15 seconds video clip into memory card;
3. Sleep and alert after 1 minute once motion detected again.

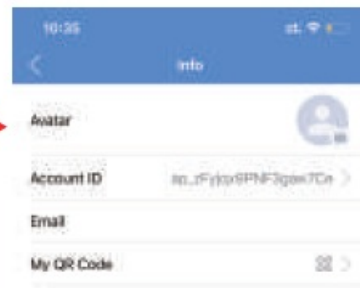
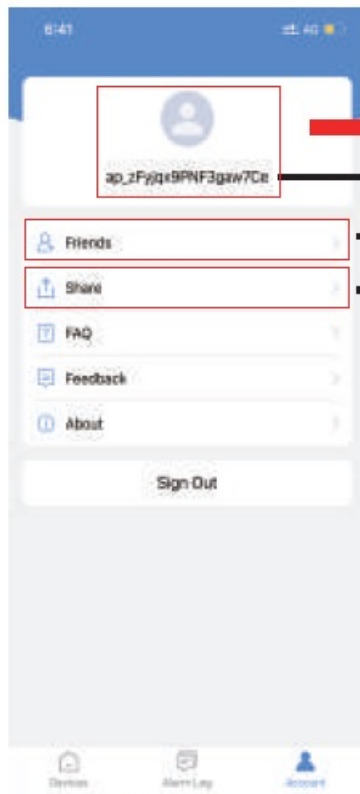
Set name: Press the] after the camera, select Device Name→ Input needed name like Office, Living room etc...



APP Introduction







Account info and QR code

Add friends by input account info or scan QR code

Sharing setting



Video recording setting

Check left capacity, Format...

Check current firmware version, or update to latest version

Specification

| | |
|--|-----------------------------------|
| Resolution | 2 Mega CMOS |
| Video pixel | 1920*1080 |
| Compressed format | H.264 |
| View angle | 145 Degree |
| Type of memory card | TF card>=Class 4/10 and HC marked |
| Maximum capacity of memory card | 64GB |
| Mobile phone operation system | Android/iOS |
| Compatible router | 2.4G and Mobile hotspot |
| Two way talking | Yes |
| PIR alarm pictures in server | 15days |
| Battery capacity | 4500mAh |
| Standby power consumption | 500μA |
| Power consumption | 350mAh |
| Power consumption with night vision | 610mAh |
| Recording | 1 minute/ around 24MB |
| Standby time | Around 1 year |
| Charging time | Around 10 hours |
| Power adapter (not include but needed) | 5V / 2A |

FAQ

1. Is device with offline and low power notification?

Yes.

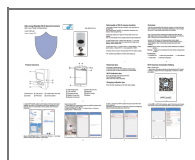
2. What does the device do when WiFi off?

Keep searching WiFi signal 3mins, 10mins, 1hour, 2 hours, Shours,24hours later; If WiFi on, it will be connected to WiFi automatically.

3. If the steps in Page 9 can't move forward (Bluetooth Pairing Mode)?

Delete the App and Download again to test,and agree all permissions (Allow notification, Bluetooth and location).

Documents / Resources



[SPY GADGETS LS011 Hidden WiFi Camera in PIR Sensor](#) [pdf] User Guide
LS011 Hidden WiFi Camera in PIR Sensor, LS011, Hidden WiFi Camera in PIR Sensor, WiFi Camera in PIR Sensor, Camera in PIR Sensor, PIR Sensor