

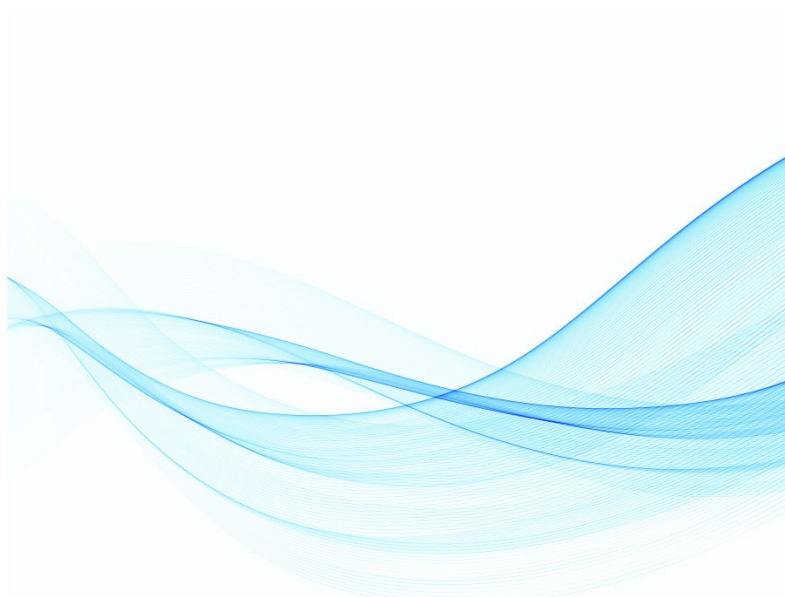


SpotSee LOGIC 360 Data Logger Instruction Manual

[Home](#) » [SpotSee](#) » SpotSee LOGIC 360 Data Logger Instruction Manual 



LOG•IC® 360 Data Logger Manual



USER MANUAL

Contents

1 Getting Started

2 Using A Pre-Configured LED-Logger

3 Connecting to the Device & Retrieving Data

4 Documents / Resources

4.1 References

5 Related Posts

Getting Started

SYSTEM REQUIREMENTS & SOFTWARE LOG-IC PDF LOGGER Windows or Mac-based operating systems

I-PLUG MANAGER Windows-based operating systems only

LOG-IC PDF Loggers are powered by Swittrace I-Plug Technology. The Swittrace I-Plug Manager is a free tool that allows you to configure or modify the logger settings.

Configure, Re-Configure (Multi-Use), or Modify Your Logger Settings

Once your LOG-IC PDF logger is active, do not plug it into a USB port unless you want to stop the logger.

1. Download the FREE I-Plug Manager software by visiting <https://swittrace.com/download/>
2. Plug the LOG-IC data logger into any USB port
3. Configure or modify an unused Single-use or any Multi-use PDF logger. You can adjust these settings:
 - a. Sample Time
 - b. Measures
 - c. Celsius or Fahrenheit
 - d. Start Delay
 - e. Alarms
4. Select Save Settings

Using A Pre-Configured LED-Logger

Starting & Stopping the Logger

Starting the Logger

When you are ready to begin recording temperature with your logger:

1. Press and hold the START button until all 4 LED's flash, releasing when the GREEN LED is active
2. The GREEN LED will then begin flashing, verifying the logger is active or in Start Delay.

Stopping the Logger

LOG-IC PDF loggers are programmed with a typical or customized trip duration and will continue to record until the end of that duration.

There are 2 different ways to stop the device before the end of a trip duration:

1. Press and hold the STOP button for 6 seconds until all 4 LED's flash, releasing when the RED LED is active and fixed.
2. Plug the device into a USB port of a computer.

Reading the Logger

If you press the START button at any time, LED indicators give valuable information about your temperature data:

Led Indicators:

- **Ready State | 4 Blinking LED Indicators**

Device has not been started.

NOTE: When the device is in this state, only the start button is active.

- **Running State | Blinking Green**

This confirms that the device is in Start Delay or actively logging.

NOTE: There is a fixed green LED indicator during the first 2 minutes of recording.

- **Stopped State | Fixed Red**

This confirms that the device is no longer actively logging

- **Low Alarm Triggered**

Blinking Blue | In the Running or Stopped State, a blinking blue indicator identifies a low alarm has been triggered.

Fixed Blue | In the Running or Stopped State, a fixed blue indicator shows an ultra-low alarm has been triggered.

- **High Alarm Triggered**

Blinking Orange | In the Running or Stopped State, a blinking orange indicator identifies a high alarm has been triggered.

Fixed Orange | In the Running or Stopped State, a fixed orange indicator identifies an ultra-high alarm has been triggered.

This document is written and published by SpotSee All rights reserved.

Connecting to the Device & Retrieving Data

Upon plugging into any USB port, the LOG-IC PDF logger will be detected as a USB drive and will be recognized without any additional software.

Do not plug in the logger unless you are ready to stop the device.

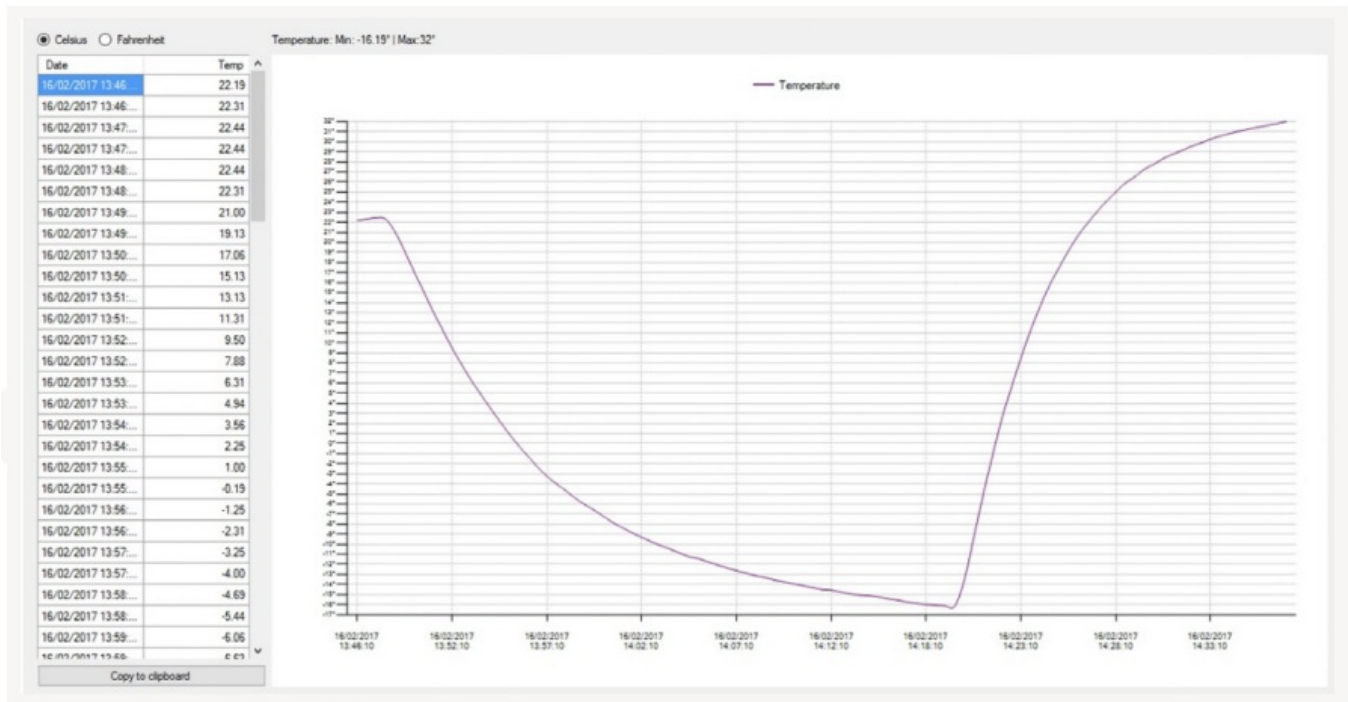
There are 2 possible situations when plugging in your device:

1. If the device was not previously logging, press the START button for the computer to detect.
2. If the device is active or was previously stopped, the computer will automatically detect the logger and begin to generate the PDF report. Do not remove the logger during the download.

Once the report is ready a new USB Drive will appear on your PC, allowing you to download the PDF report. Based on the configuration of your logger, it could take up to 45 seconds for the PDF report be generated.

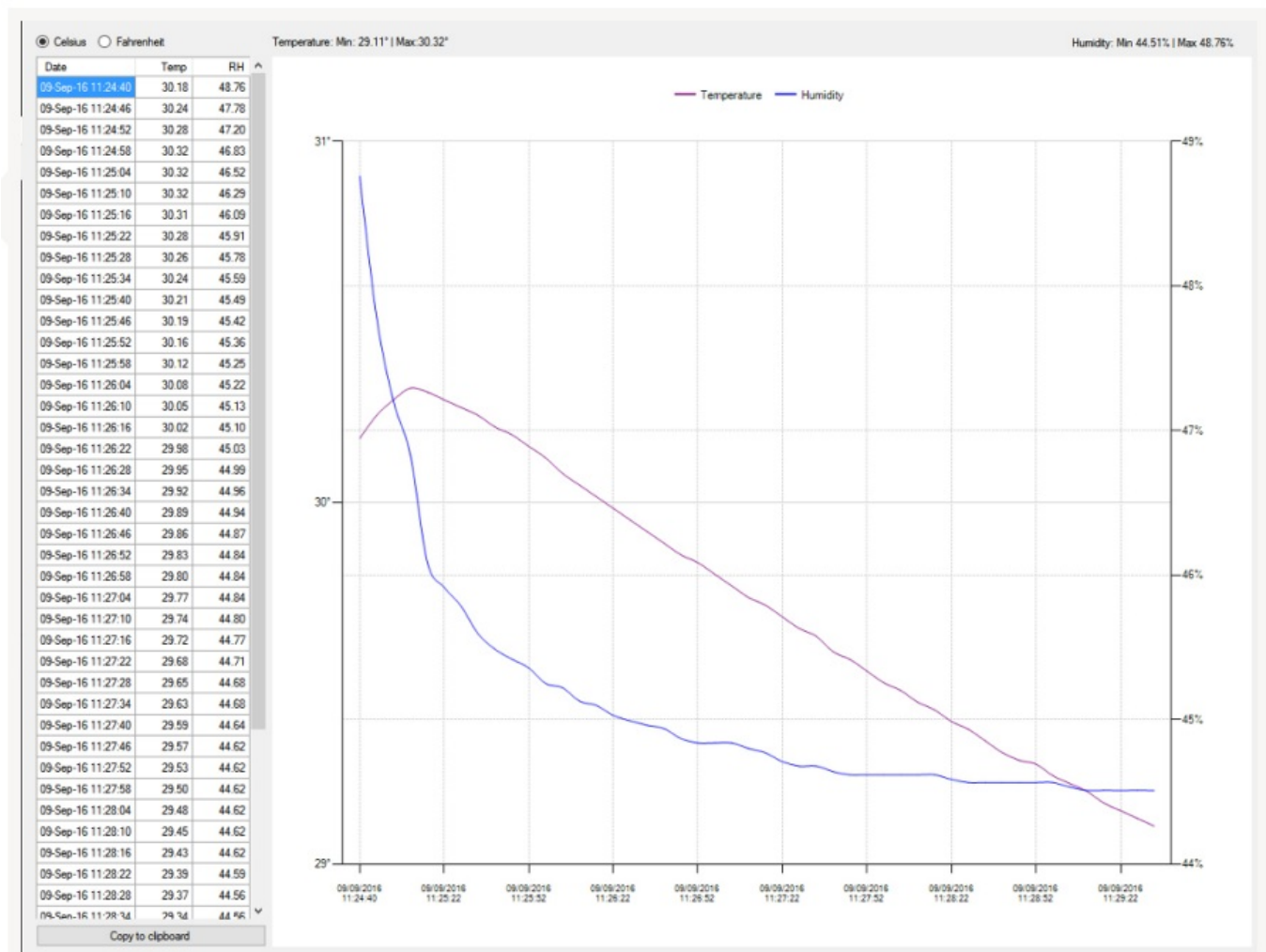
Reading the Temperature Data

A detailed graph will be provided once the temperature data is downloaded. Temperature information will be displayed in red and temperature readings will appear on the left side of the screen.



Reading the Temperature and Humidity Data


A detailed graph will be provided once the temperature and humidity data are downloaded. Temperature information will be displayed in red and temperature reading will appear on the left side of the screen. Humidity will be displayed in blue and humidity readings will appear on the left side of the screen.





Rev: 12/2020

Documents / Resources

 The image shows the cover of the SpotSee LOGIC 360 Data Logger Manual. It features a yellow and black data logger device against a background of blue wavy lines. The text "SpotSee" and "LOGIC 360 Data Logger Manual" is visible at the top.	<p>SpotSee LOGIC 360 Data Logger [pdf] Instruction Manual Pharmaceutical Shipping Temperature and Condition Monitors, LOGIC 360 Data Logger, LOGIC 360, Data Logger</p>
--	---

References

- [Temperature Monitoring Solutions | American Thermal Instruments](#)
- [Switrace | Download Download – Switrace](#)

Manuals+.