



SPIDEY SNF0023 Remote Controlled Vehicle User Guide

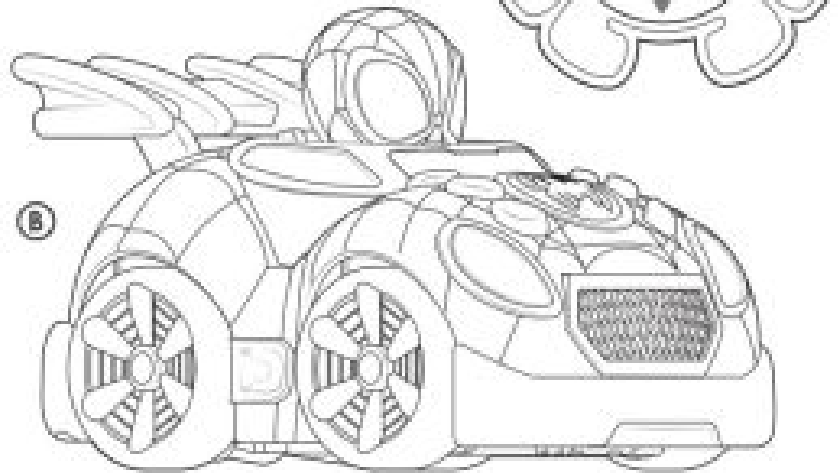
[Home](#) » [SPIDEY](#) » SPIDEY SNF0023 Remote Controlled Vehicle User Guide 



Congratulations on your purchase of the Spidey Web Crawler RC.
Please read all information in this guide thoroughly for battery replacement and usage instructions.

INCLUDES:

- (A) Remote Control (1)
- (B) Spidey Web Crawler RC (1)



CAUTION

DO NOT sit or stand on any parts of the toy.
DO NOT drop or throw the toy.
DO NOT expose the toy to the moisture of any kind.

Contents

- [1 INSTRUCTIONS](#)
- [2 HOW TO PLAY](#)
- [3 NOTES & TROUBLESHOOTING](#)
- [4 BATTERY SAFETY INFORMATION](#)
- [5 HOW TO CLEAN:](#)
- [6 Documents / Resources](#)
- [7 Related Posts](#)

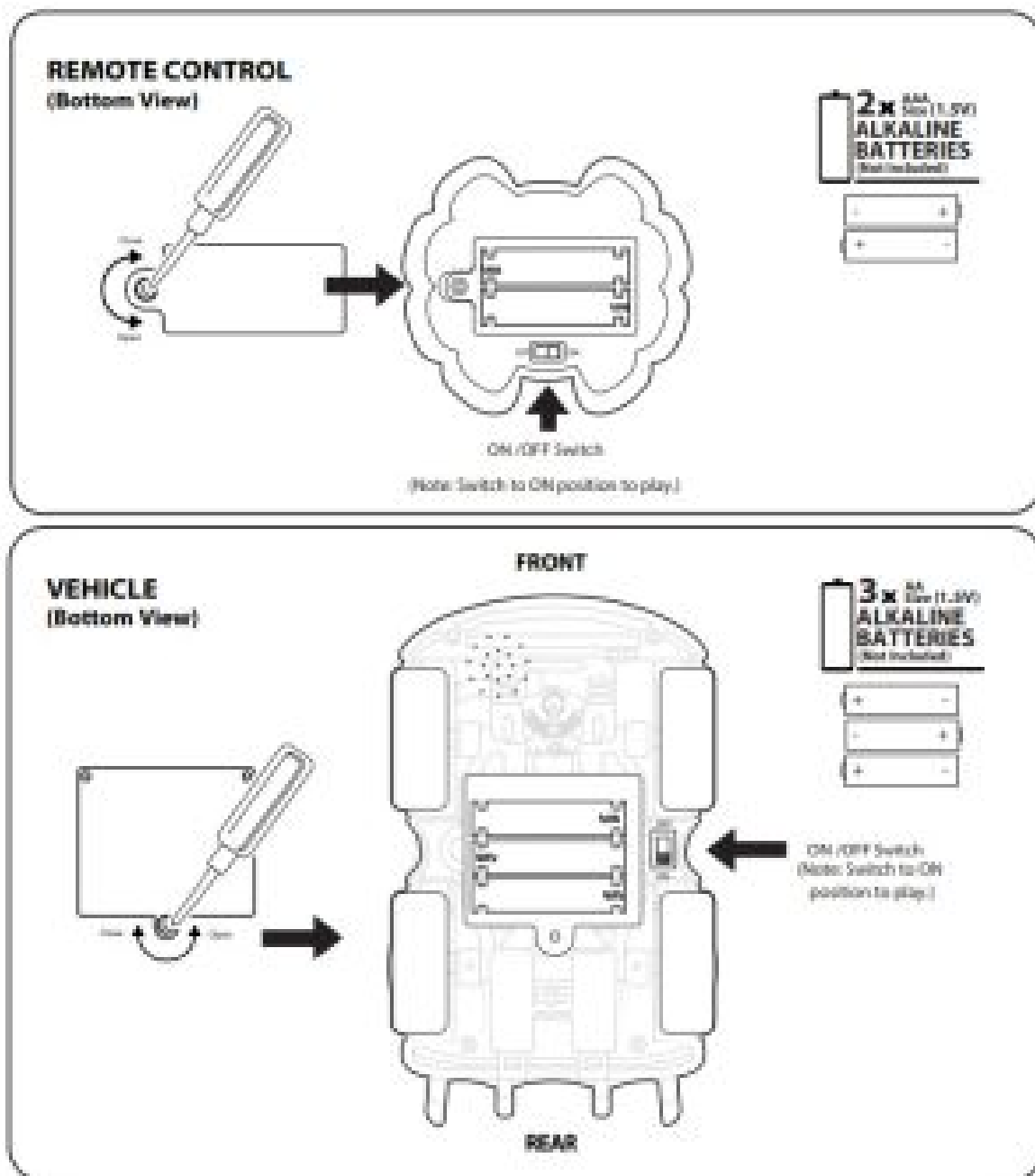
INSTRUCTIONS

BATTERY INSTALLATION INSTRUCTIONS (ADULT INSTALLATION REQUIRED)

RC vehicle requires 3 x 1.5 V AA batteries and Remote Control requires 2 x 1.5 v AAA batteries (not included). Batteries are included for “TRY ME” purposes. Replace with fresh batteries if needed.

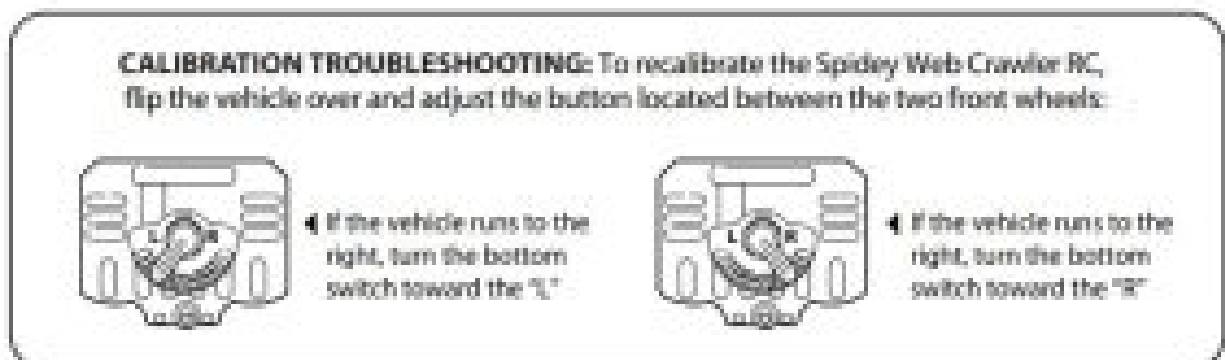
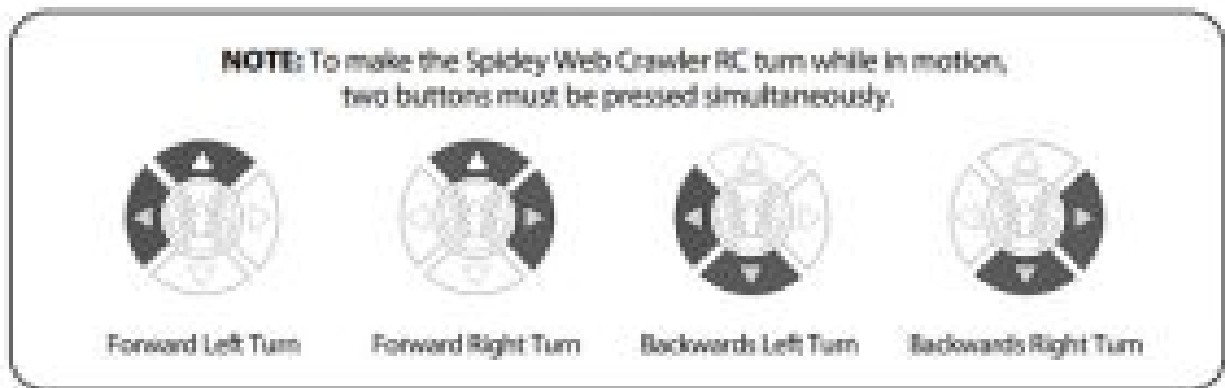
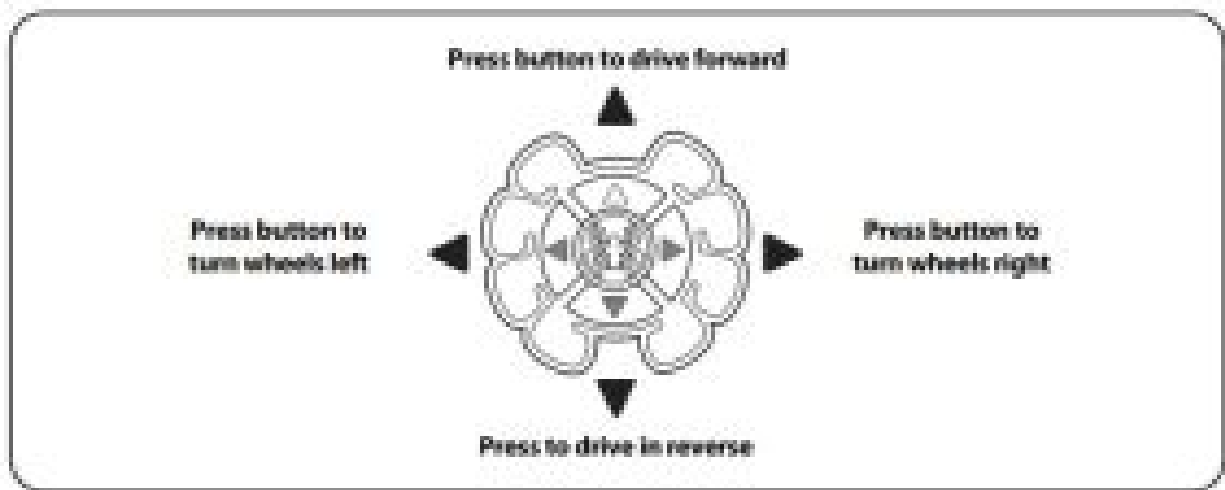
1. Move the switch on the product to the OFF position. Use a Phillips Head screwdriver (not included) to remove the cover.
2. Remove the old batteries and insert the new 3 x 1.5 V AA batteries for the RC vehicle and the new 2 x 1.5 v AAA batteries for the remote control with the correct polarity indicated inside the box. Screw the cover back in.
3. Move the switch to the ON position to activate the product feature. Move the switch to the OFF position when

not in use to help save battery life.



HOW TO PLAY

Turn Spidey Web Crawler RC and Remote Control settings to “ON” and use the remote control to steer your new Spidey Web Crawler RC.



NOTES & TROUBLESHOOTING

- Remote Control will function up to a distance of approximately 32 feet (10 meters) from the Spidey Web Crawler RC.
- If the Remote Control is not used for more than 3 minutes, then the vehicle will enter Sleep Mode. To exit Sleep Mode, turn the vehicle switch Off and on again.
- Fresh batteries will allow the Spidey Web Crawler RC to function continuously for approximately 20 minutes.
- Remote Control does not transmit well through obstacles such as buildings, metal structures, and trees.
- Replace batteries if the Spidey Web Crawler RC does not operate normally or signal range decreases noticeably.
- Spidey Web Crawler RC performs best on flat surfaces and will not work well on high pile carpet floors or very rough surfaces.

BATTERY SAFETY INFORMATION

- Batteries are to be replaced by an adult.
- Non-rechargeable batteries are not to be recharged.
- Rechargeable batteries are to be removed from the toy before being charged.
- Rechargeable batteries are only to be charged under adult supervision.
- For best performance, only the recommended batteries or their equivalent are to be used.
- Batteries must be inserted with the correct polarity.
- Do not mix new and used batteries.
- Do not mix different types of batteries.
- Exhausted batteries are to be removed from the toy.
- The supply terminals are not to be short-circuited.

FCC ID for vehicle: YNIJAZWARES023

FCC ID for Remote Control: YNIJAZWARES23A

This device complies with Part 15 of the FCC Rules. Operation is subject to the following two conditions: (1) This device may not cause harmful interference, and (2) this device must accept any interference received, including interference that may cause undesired operation.

WARNING! Changes or modifications not expressly approved by the party responsible for compliance could void the user's authority to operate the equipment.

NOTE: This equipment has been tested and found to comply with the limits for a Class B digital device, pursuant to Part 15 of the FCC rules. These limits are designed to provide reasonable protection against harmful interference in a residential installation. This equipment generates uses and can radiate radio frequency energy and, if not installed and used in accordance with the instructions, may cause harmful interference to radio communications. However, there is no guarantee that interference will not occur in a particular installation. If this equipment does cause harmful interference to radio or television reception, which can be determined by turning the equipment off and on, the user is encouraged to try to correct the interference by one or more of the following measures:

- Reorient or relocate the receiving antenna.
- Increase the separation between the equipment and receiver.
- Connect the equipment into an outlet on a circuit different from that to which the receiver is connected.
- Consult the dealer or an experienced radio/TV technician for help.

HOW TO CLEAN:

- To clean, wipe with a cloth.
- Do not submerge in water.
- Do not use chemical or abrasive cleaners.

Used with permission. Manufactured and Distributed by:
 Jazwares, LLC, Sunrise, FL 33326, USA
 Jazwares, 16A Crane Grove, London, N7 8LE, United Kingdom
 Jazwares GmbH, Mina-Rees-Str. 8, 64295 Darmstadt, Germany
www.jazwares.com / www.jazwares.de



PROBLEMS?

DO NOT RETURN TO THE STORE
Please Call Us: 1.800.370.1827
(U.S. Customers Only)


IMPORTANT:

PLEASE SAVE THIS INSTRUCTION SHEET.
IT CONTAINS VALUABLE PRODUCT INFORMATION.



Protect the environment by not disposing of this product with household waste (2012/19/EU).
Check your local authority for recycling advice and facilities.

Documents / Resources

	<p>SPIDEY SNF0023 Remote Controlled Vehicle [pdf] User Guide JAZWARES023, YNIJAZWARES023, JAZWARES23A, YNIJAZWARES23A, SNF0023 Remote Controlled Vehicle, Remote Controlled Vehicle</p>
---	---

[Manuals+](#)