

Spider Farmer
SF-Inline
Fan-07
Mixed Flow
Inline Fan



Spider Farmer SF-Inline Fan-07 Mixed Flow Inline Fan User Manual

[Home](#) » [Spider Farmer](#) » Spider Farmer SF-Inline Fan-07 Mixed Flow Inline Fan User Manual 

Contents

- 1 Spider Farmer SF-Inline Fan-07 Mixed Flow Inline Fan
- 2 SPECIFICATION OF INLINE FAN
- 3 INLINE FAN WITH SPEED CONTROLLER
- 4 SPIDER FARMER GGS CONTROLLER
- 5 HOW TO USE WITH SPIDER FARMER POWER STRIP KITS
- 6 PACKAGE CONTENTS
- 7 SAFETY PRECAUTIONS
- 8 Contact
- 9 Documents / Resources
 - 9.1 References

Spider Farmer

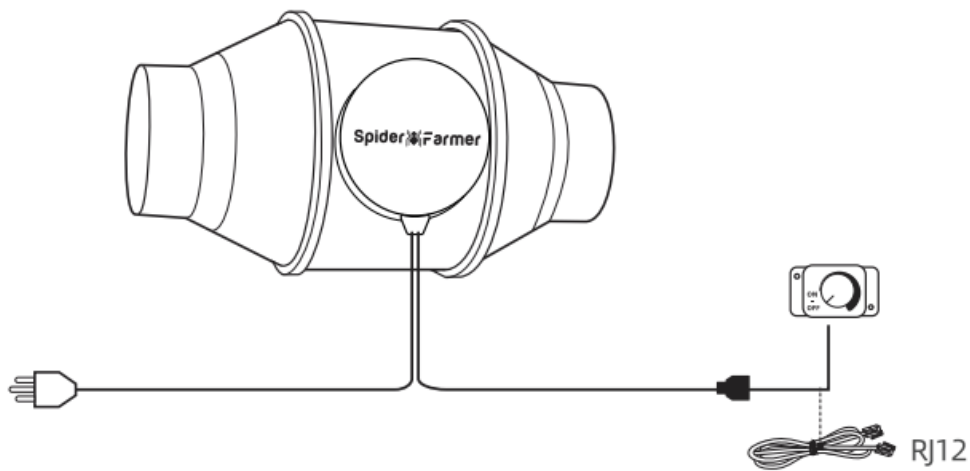
Spider Farmer SF-Inline Fan-07 Mixed Flow Inline Fan



SPECIFICATION OF INLINE FAN

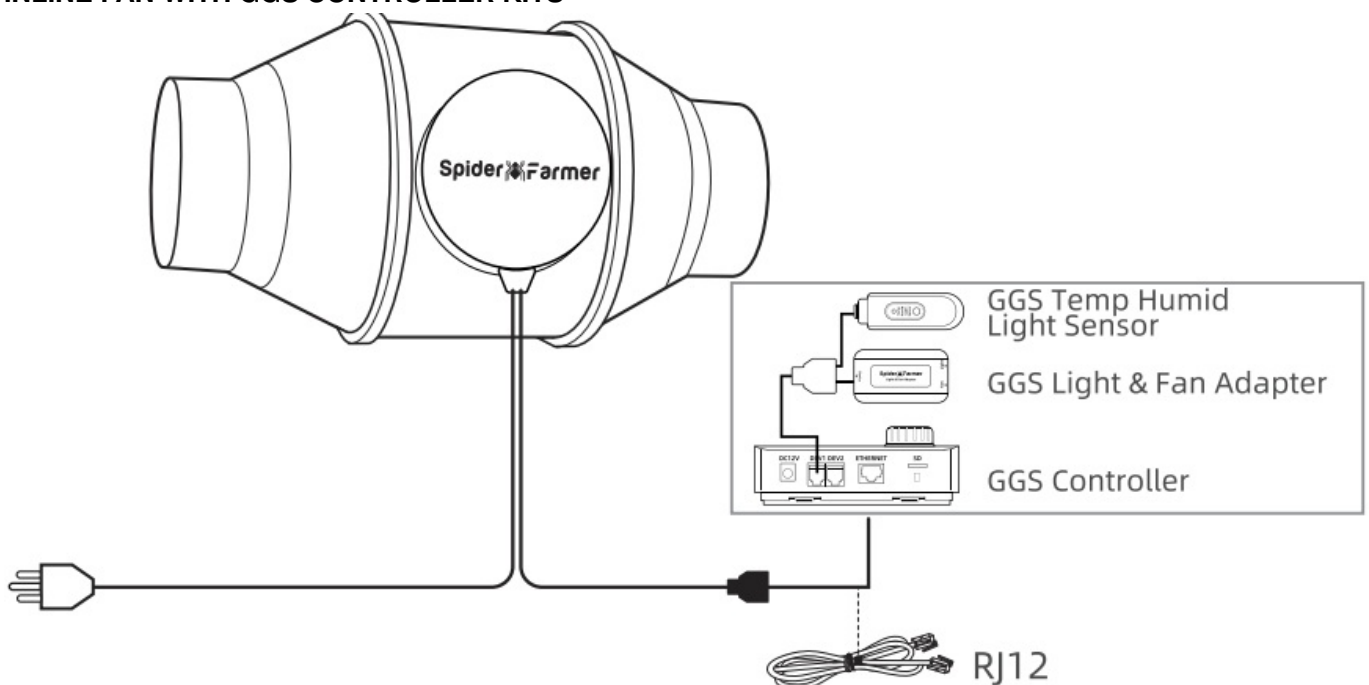
Duct Size	4-Inch	6-Inch	8-Inch	12-Inch
Power Usage	27W±5%	62W±5%	180W±5%	250W±5%
Fan Airflow	205 CFM	402 CFM	807 CFM	1604 CFM
Fan Speed	3000 RPM	3000 RPM	3250 RPM	2350 RPM
Noise Level	26.8 dBA	32 dBA	39 dBA	62 dBA
Frequency	50/60HZ			
Voltage	AC 100-240V			
Operating Temperature	-20°C-60°C(-4°F-140°F)			

INLINE FAN WITH SPEED CONTROLLER



OPERATING INSTRUCTIONS	
With Speed Controller	1. Use the speed controller to adjust the fan's airflow. Turn clockwise to increase the airflow, and turn counterclockwise to decrease it.
	2. Turn the knob and listen for a sound to turn the fan ON or OFF.
With GGS Controller Kits or Power Strip Kits	1. Use the RJ12 cable connect to the GGS Controller, then use the controller to set the fan's operating time and airflow.
	2. Use the RJ12 cable or power cord connect to the Power Strip. Then you can control the inline fan through Spider Farmer APP.

INLINE FAN WITH GGS CONTROLLER KITS



- **NOTE:** The GGS Light & Fan Adapter is designed for use with LED grow lights and clip fans.
- One RJ12 cable includes a waterproof cap, specifically designed for the GGS Temp & Humidity Sensor.

SPIDER FARMER GGS CONTROLLER

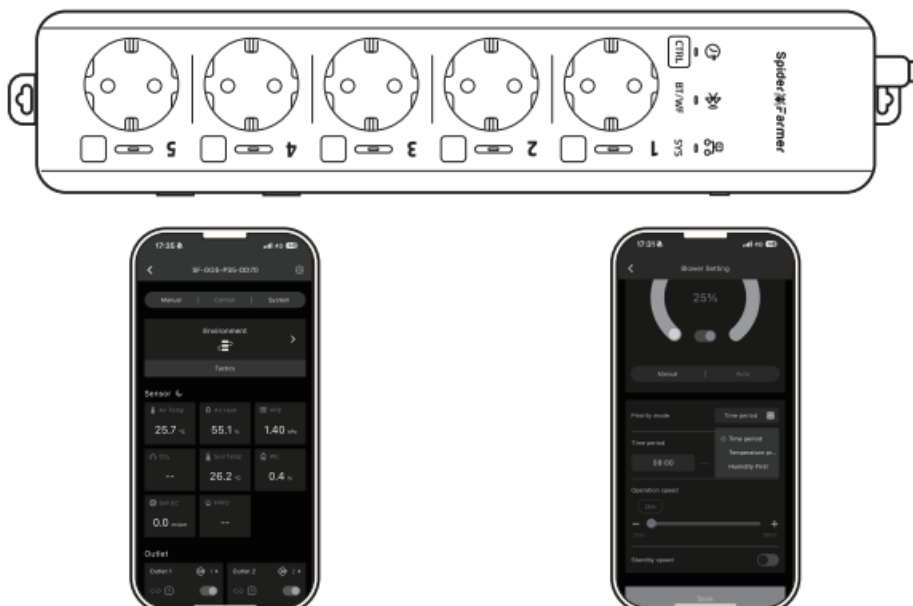


- Use the RJ12 cable to connect to the DEV1 or DEV2 port on the GGS Controller, then select Blower(inline fan) in the interface.
- Use 1 to navigate through the interface. Rotate to scroll or move. Press to confirm selections.
- Press 2 to return directly to the home screen.
- Press 3 to return to the previous screen or menu.


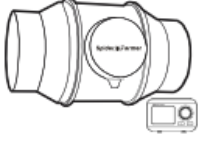


OPERATING INSTRUCTIONS	
Manual Mode	Manually Adjust Fan Speed (0%–100%). 0% turns it off.
Time Period Mode	Set the fan's start time and end time.
	Set the fan's operating speed and standby speed.
Temperature First Mode	Automatically adjust fan operation based on temperature priority.
Humidity First Mode	Automatically adjust fan operation based on humidity priority.
Standby Speed	Enable standby speed, set the fan speed after the end time

HOW TO USE WITH SPIDER FARMER POWER STRIP KITS

- If you own a Spider Farmer Power Strip Kit, you can connect the inline fan using either the RJ12 cable or the power cord. Once connected, control the fan through the Spider Farmer App.
- Find the Device–Click 'Blower' (inline fan)–Click 'Auto' to set the fan–3 Modes Available

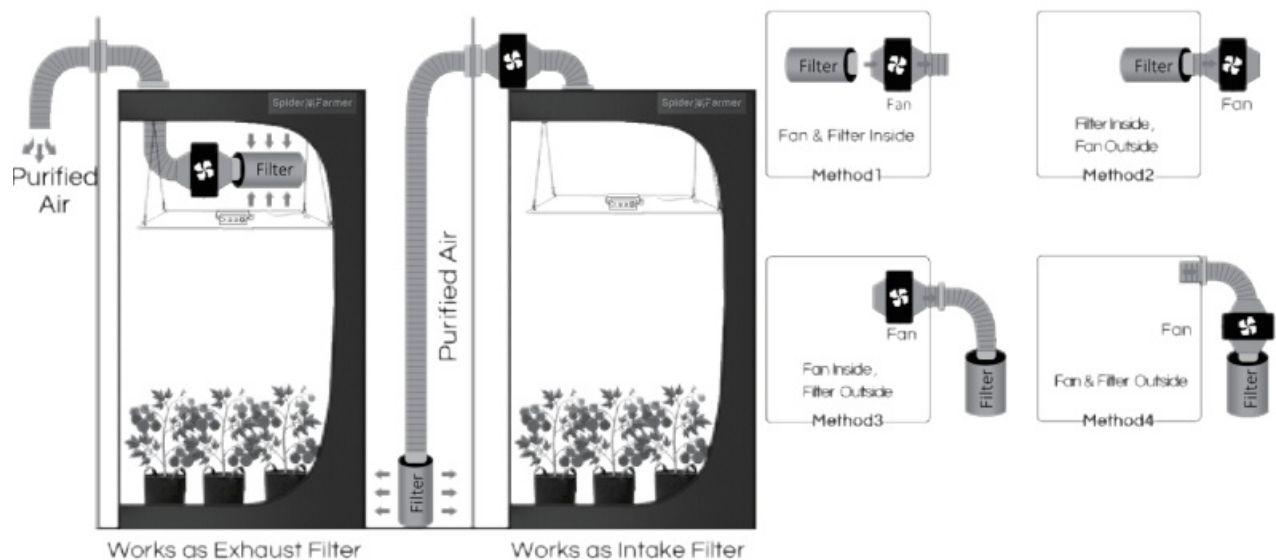


PACKAGE CONTENTS

				
Model	SF-4/6Inlinefan	SF-4/6Inlinefan-CP	SF-4/6filterkit	SF-filterkits4/6-CP
Inline Fan	1	1	1	1
Controller	Speed Controller	GGs Controller	Speed Controller	GGs Controller
Carbon Filter	x	x	1	1
RJ12 Cable	x	4	x	4
Strap	2	2	4	4
Ducting	x	x	1	1
Clamp	x	x	3	3
Vent Cover	x	x	2	2
Timer	x	x	1	x
Thermo-hygrometer	x	x	1	x

SAFETY PRECAUTIONS

- **Operating temperature range:** -20°C to 60°C (-4°F to 140°F).
- **Environmental humidity range:** 10%-98% RH (can withstand up to 45°C for 24 hours). materials.
- Keep the fan away from children, especially the blades, electrical parts, and packaging
- Improper use will void the manufacturer's warranty.



Contact

- Email: support@spider-farmer.com
- info@spider-farmer.com

Documents / Resources



[Spider Farmer SF-Inline Fan-07 Mixed Flow Inline Fan](#) [pdf] User Manual
SF-Inline Fan-07 Mixed Flow Inline Fan, SF-Inline Fan-07, Mixed Flow Inline Fan, Flow Inline Fan, Inline Fan, Fan

References

- [User Manual](#)

[Manuals+](#), [Privacy Policy](#)

This website is an independent publication and is neither affiliated with nor endorsed by any of the trademark owners. The "Bluetooth®" word mark and logos are registered trademarks owned by Bluetooth SIG, Inc. The "Wi-Fi®" word mark and logos are registered trademarks owned by the Wi-Fi Alliance. Any use of these marks on this website does not imply any affiliation with or endorsement.