



## SPETUNER SPKT26010 CCV Catch Can Internal and External Kit Internal User Guide

[Home](#) » [SPETUNER](#) » SPETUNER SPKT26010 CCV Catch Can Internal and External Kit Internal User Guide 

SPETUNER SPKT26010 CCV Catch Can Internal and External Kit Internal



## Contents

- 1 PACKING INCLUDE
- 2 INSTALLATION NOTES
- 3 CUSTOMER SUPPORT
- 4 Documents / Resources
  - 4.1 References

## PACKING INCLUDE

- 1 X Application-Specific Mounting Bracket
- 2 X Internal & External Catch Can
- 3 X Hoses
- 4 X CCV Adapters
- 3 X Barbed Fittings
- 1 X 90° Barbed Fittings
- 1 X Aluminum Plug
- 1 X Mounting Hardware Pack
- 4 X Nylon cable ties
- 8 X bolts



### WARNING

**CAUTION!!!** Never work on a hot vehicle. Serious injury in the form of burns can result if the vehicle has been in use. Allow vehicle to cool prior to installation.

Always wear eye protection when working on or under any vehicle.

**Note:** For your safety we recommend disconnecting any negative battery terminals whenever working on any vehicle. Installation of the Cold Air Intake requires removal of the plumbing to the turbo intake. Use caution not to get any dust, debris, or tools left where they may enter the system.

## INSTALLATION NOTES

**Note:** Prior to installation, please compare the parts that you have received with the bill of materials listed above to ensure that you have all the necessary parts for installation.

### DISCLAIMER

- Allow vehicle to cool completely prior to attempting installation.
- Mishimoto is not responsible for any vehicle damage or personal injury due to installation errors, misuse, or removal of Mishimoto products.
- Mishimoto suggests that a trained professional install all Mishimoto prod

**Step 1:** Loosen the intercooler hot-side pipe. Lift it out of the engine bay.



**Step 2:** Place a set of buckets under the vehicle to catch any residual fluid.

**Step 3:** In this step you will be disconnecting the fuel lines. Allow the fuel system to depressurize before disconnecting the fuel lines. Wait until the vehicle has cooled down or 5 minutes from when it was last turned off, whichever is longer, before disconnecting.



**Step 4:** Remove the bolts that secure the bracket and then remove the fuel filter and bracket from the vehicle.



**Step 5:** Remove the bolts that secure the fuel rail.(2x 8mm bolts)



**Step 6:** Remove the bolts that secure the air-oil separator(4x 8mm bolts)



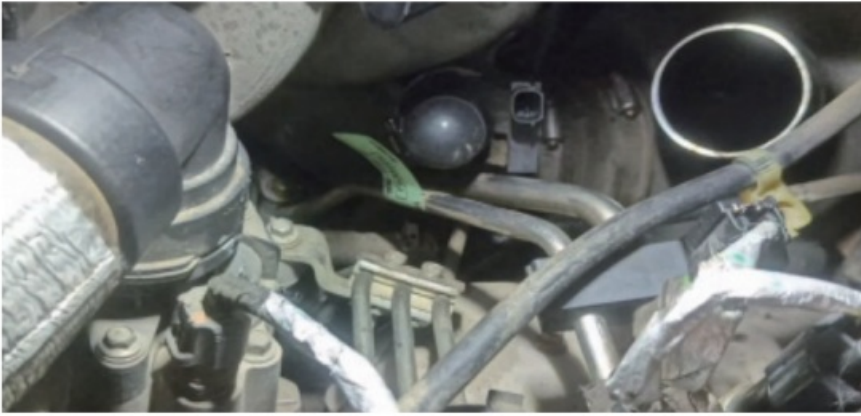
**Step 7 :** Lift the air-oil separator and clean the housing.

**Step 8:** Remove the corrugated hose at the turbo side connection and the CCV canister connection.





**Step 9:** Install the rubber boot and clamp. (This clamp is not included in the package.)



**Step 10:** Attach the shorter hose to the top barb (1x worm gear clamp)

**Step 11:** Attach the longer hose to the bottom barb (1x worm gear clamp)



**Step 12:** Grease the O-ring groove on the aluminum adapter and place the thin o-ring within the groove.



**Step 13:** Install the internal catch can.



**Step 14:** Install CCV REROUTE as shown in the figure.



**Step 15:** Install the CCV adapter and aluminum plug.



**Step 16:** Install CCV HOSE. (This clamp is not included in the package).



**Step 17:** Reinstall the fuel filter bracket and the fuel filter.

**Step 18:** Reconnect the fuel lines.

**Step 19:** Secure the fuel rail.

**Step 20:** Remove the ground strap from the firewall.

**Step 21:** Install the bracket to the firewall.



**Step 21:** Thread the fittings onto the catch can. Tighten the fittings with a wrench.

**Step 23:** Install the catch can to the bracket and tighten the bolts.

**Step 24:** Attach the short hose to the inlet port on the catch can. (1x worm gear clamp)

**Step 25:** Attach the longer hose to the outlet port on the catch can. (1x worm gear clamp)



**Step 26:** Reinstall the hot-side intercooler pipe. (1x worm gear clamps, 1x spring clip) Congratulations! You have finished installing the 2011-2016 Ford 6.7L Powerstroke CCV Reroute/Delete w/Catch Can Internal External Kit

## CUSTOMER SUPPORT






TECHNICAL SUPPORT:

Email: [service@spetuner.com](mailto:service@spetuner.com)

<https://spetuner.com>



 CCV REROUTE/DELETE W/ CATCH CAN INTERNAL & EXTERNAL KIT INTERNAL & EXTERNAL CATCH CAN 2011-2018 FORD 6.7L POWERSTROKE   <small>Email: service@spetuner.com Web: spetuner.com</small>	<p><a href="#">SPETUNER SPKT26010 CCV Catch Can Internal and External Kit Internal</a> [pdf] User Guide SPKT26010 CCV Catch Can Internal and External Kit Internal, SPKT26010, CCV Catch Can Internal and External Kit Internal, Can Internal and External Kit Internal, External Kit Internal, Kit Internal</p>
--	--

## References

- [SPETUNER | Diesel Delete Kits & Performance Parts for Ford, RAM & GMC – SPetuner](#)
- [User Manual](#)

### Manuals, Privacy Policy

This website is an independent publication and is neither affiliated with nor endorsed by any of the trademark owners. The "Bluetooth®" word mark and logos are registered trademarks owned by Bluetooth SIG, Inc. The "Wi-Fi®" word mark and logos are registered trademarks owned by the Wi-Fi Alliance. Any use of these marks on this website does not imply any affiliation with or endorsement.