

SPEEDFUN HPR50 Ebike Tuning Kit



SPEEDFUN HPR50 Ebike Tuning Kit Instructions

[Home](#) » [SPEEDFUN](#) » SPEEDFUN HPR50 Ebike Tuning Kit Instructions 

Contents

- [1 SPEEDFUN HPR50 Ebike Tuning Kit](#)
- [2 Mounting Instructions](#)
- [3 Wire Pulling](#)
- [4 What Is this blue wire Jumper for?](#)
- [5 GENERAL INFO](#)
- [6 FURIOUS EVO EASY+ version](#)
- [7 IMPORTANT Instructions](#)
- [8 Documents / Resources](#)
 - [8.1 References](#)

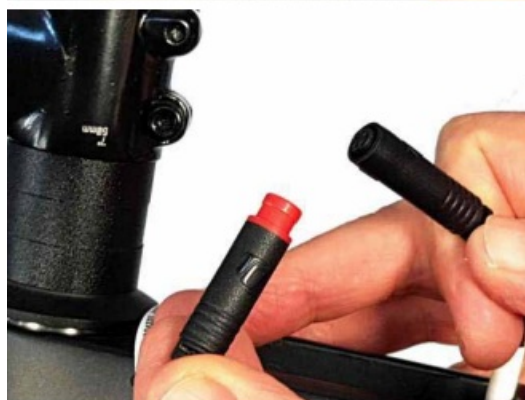


SPEEDFUN HPR50 Ebike Tuning Kit



Mounting Instructions

1. Disconnect power to the system by disconnecting the plug located under the battery. Please consult the instructions supplied with the bike.
2. Extract the display by removing the central screw that fixes it to the frame.
3. Locate the connector with the middle red line.
4. Disconnect the connector with the middle red line.



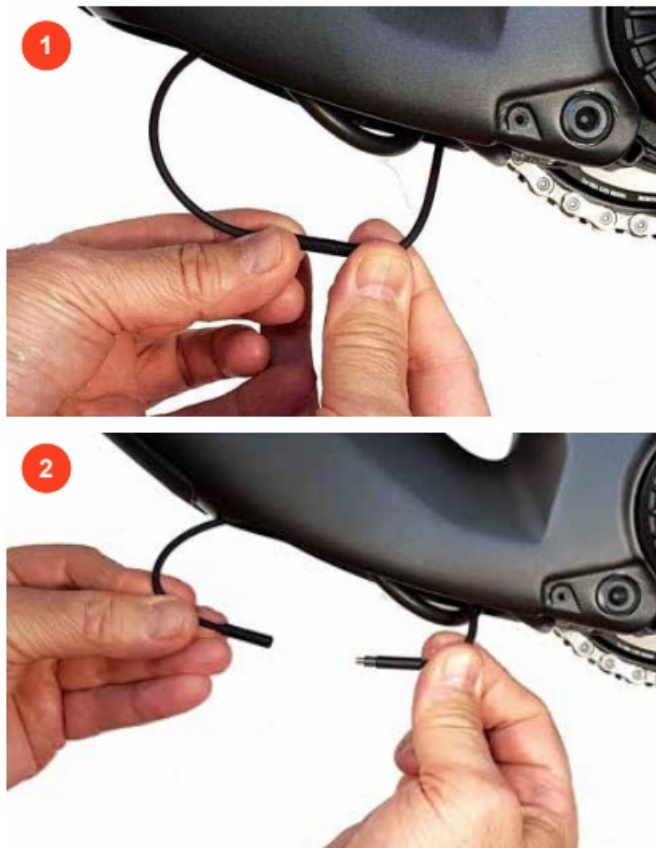
5. Connect Furious connectors 1 and 2 to the connectors obtained in the previous steps. Be very careful to collate the arrows during the Insert.

Wire Pulling



Insert connectors 3 and 4 from the hole in which the display was housed and reach the engine passing inside the down tube of the frame (battery housing). We suggest using a "wire puller". Only if necessary remove the battery.

1. Locate the connector that connects the speed sensor to the motor.
2. Disconnect the connector. DO NOT PULL BY THE CABLES but by the rigid plastic part. Connect Furious connectors 3 and 4 to the connectors thus produced.



3. connections completed successfully.

Insert the device body and connectors Into the chassis.

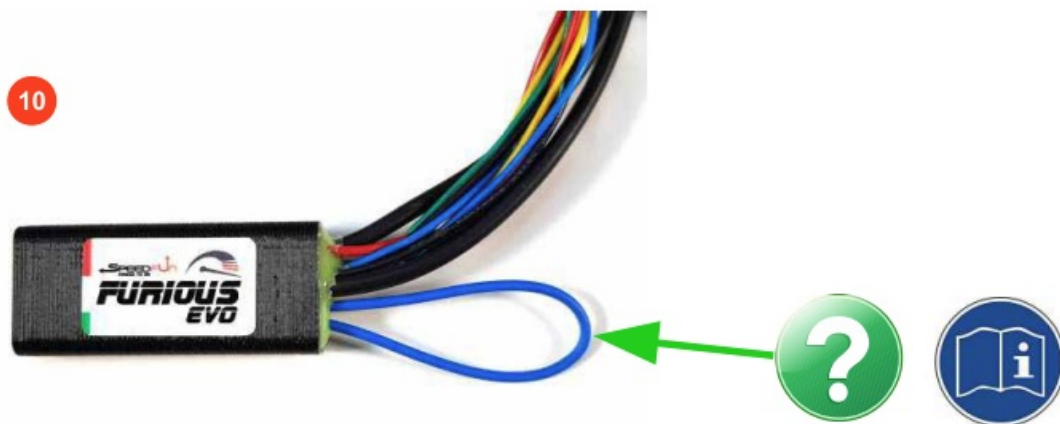
Reposition and secure the display.

Reposition and secure the battery and engine guards.



What Is this blue wire Jumper for?

Read carefully: The Furious device is always active, It cannot be deactivated. If you want to be able to activate and deactivate the speed release function, you need to cut/interrupt the jumper at the point indicated by the arrow (insulate both ends !). Read the activation and deactivation methods on the following pages.



GENERAL INFO

The purpose of Furious EVO is to manipulate the rotation speed of the rear wheel and to communicate to the engine a speed always lower than 25 kmH in order to obtain a real speed with very high active engine. The maximum real speed that can be reached will be dictated by the power of the engine added to the power expressed by your legs.

It can be activated and deactivated at will and maintains the setting even after the bike is turned off.

It can be installed on e-bikes with any type of display or side control as well as on e-bikes without a display.

It is a device that has no communication with the display therefore, when the device is active, the display (if present) or the app (if available) indicates the speeds manipulated in this way:

- From 0 up to 20* real kmh: SPEED
- From 20* up to 42* real kmh: SPEED divided by two – From 42* real kmh: SPEED divided by three Also the distances undergo alterations with Active device. With the device Deactivated the bike works as original.

FURIOUS EVO EASY+ version

Furious Evo Easy+ must be connected “as a bridge” between the speed sensor and the engine.

- It is supplied and ready to use in “ALWAYS ON” mode and cannot be deactivated.
- If you want to make the device activate and deactivate at will, it is necessary to cut the blue wire in the shape of a slot that comes out of the black plastic body of the device.
- NB: Insulate the ends of the blue wire with the electrician's tape to avoid unwanted contact.

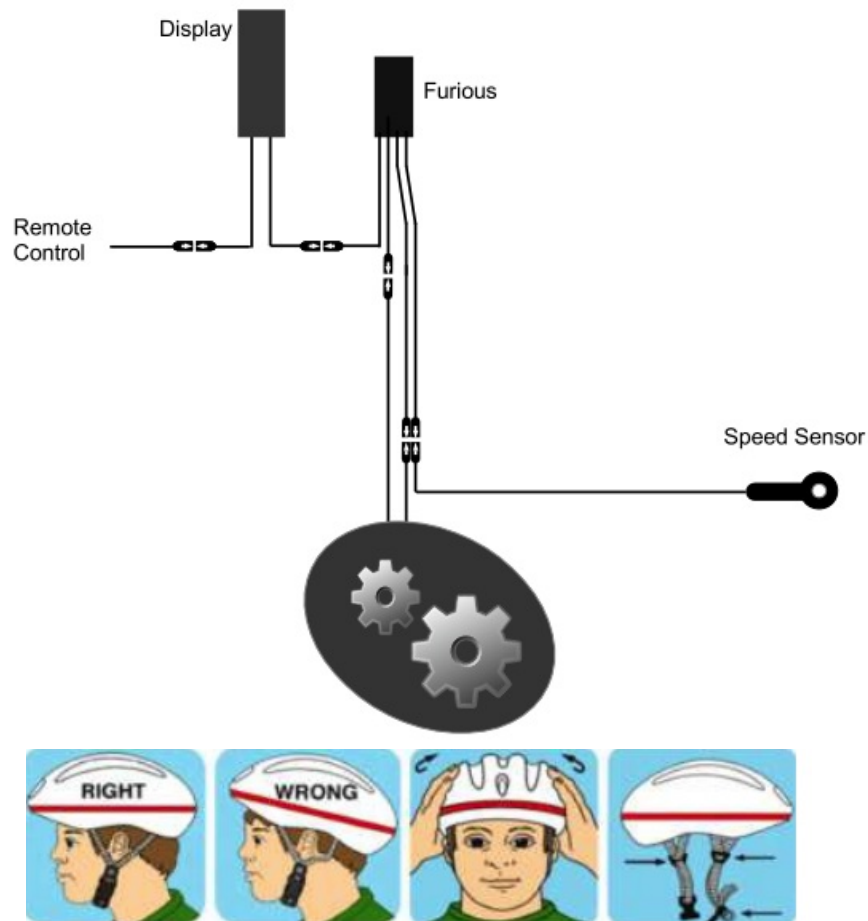
Once this operation has been carried out, the speed release can be activated and deactivated at will and the chosen setting is maintained even after the bike is switched off.

Activation and Deactivation Methods



- Turn off the ebike.
- Place the chain on the longest gear (the smallest rear sprocket).
- Position the left pedal at 11.00. From now on, do not turn the rear wheel.
- Turn on the ebike and wait for the complete check. Don't spin the rear wheel (not yet ..).
- Lift the rear wheel off the seat or frame. Don't spin the rear wheel (not yet ..).
- Give a strong pedal stroke (only one). Let the wheel spin over 30 km/h for a few seconds.

The system recognizes the rotation acceleration and interprets it as a command to activate or deactivate (cyclically) the speed release. Upon activation, the display (if present) shows the speed that passes from real to manipulated in the manner described above. When deactivated, the speed changes from manipulated to real on the display and the bike returns to its original condition.




IMPORTANT Instructions

Once the SpeedFun speed unlocking device has been installed, the electric bicycle, exceeding the 25 kmH limit, is compared to a moped and as such, if it circulates in public places, needs the approval/registration, is subject to payment of the road tax and insurance coverage, must have the plate, can not circulate on the bike paths and the driver has the obligation of driving with license and must use the helmet. Furthermore, the driving of a motorized bicycle equivalent to a moped that does not comply with the aforementioned provisions involves the administrative seizure of the vehicle and pecuniary penalties that vary depending on the offence committed. The SpeedFun release system manufacturer declines any responsibility for any damage caused to the pedal-assisted bicycles on which the device is mounted as well as to direct or indirect damage to people or property.

Please note that the modification to the bicycle invalidates the manufacturer's warranty.

Documents / Resources

	<p>SPEEDFUN HPR50 Ebike Tuning Kit [pdf] Instructions HPR50 Ebike Tuning Kit, HPR50, Ebike Tuning Kit, Tuning Kit, Kit</p>
---	--

References

- [User Manual](#)

[Manuals+](#), [Privacy Policy](#)

This website is an independent publication and is neither affiliated with nor endorsed by any of the trademark owners. The "Bluetooth®" word mark and logos are registered trademarks owned by Bluetooth SIG, Inc. The "Wi-Fi®" word mark and logos are registered trademarks owned by the Wi-Fi Alliance. Any use of these marks on this website does not imply any affiliation with or endorsement.