

Speechi SPE-BYOM-PRO Video Conferencing Systems



# Speechi SPE-BYOM-PRO Video Conferencing Systems User Guide

[Home](#) » [Speechi](#) » Speechi SPE-BYOM-PRO Video Conferencing Systems User Guide 

## Contents

- [1 Speechi SPE-BYOM-PRO Video Conferencing Systems](#)
- [2 Receiver](#)
- [3 Pairing](#)
- [4 Software Installation](#)
- [5 Projection](#)
- [6 FAQ](#)
- [7 Contact](#)
- [8 Documents / Resources](#)
  - [8.1 References](#)
- [9 Related Posts](#)

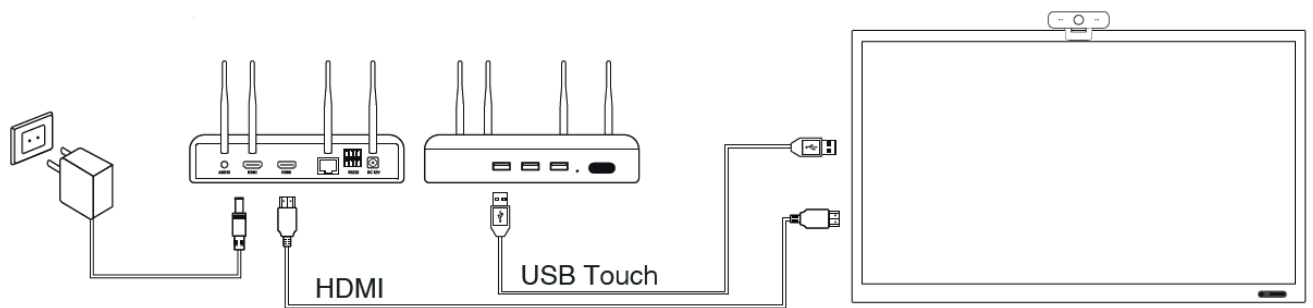


**Speechi SPE-BYOM-PRO Video Conferencing Systems**



## Receiver

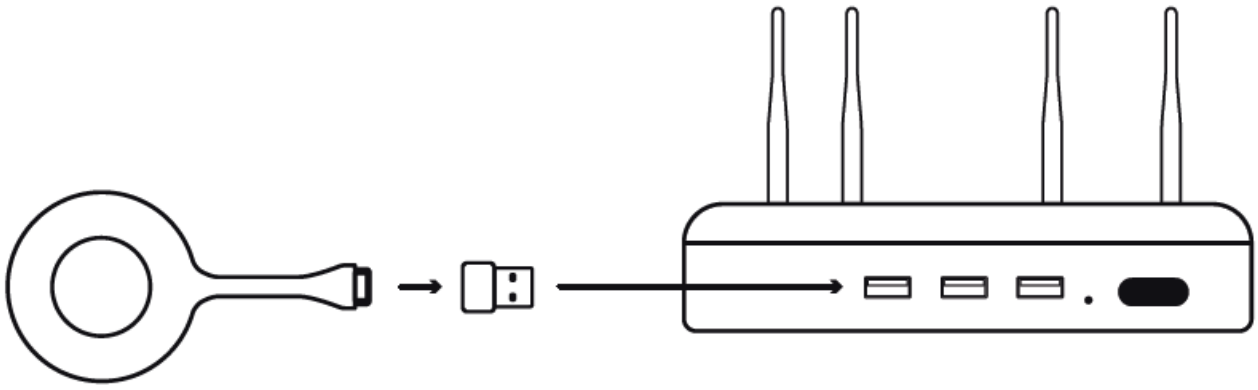
Connect the receiver using the following ports:



- HDMI
- USB Touch
- RS232
- DC 12V

## Pairing

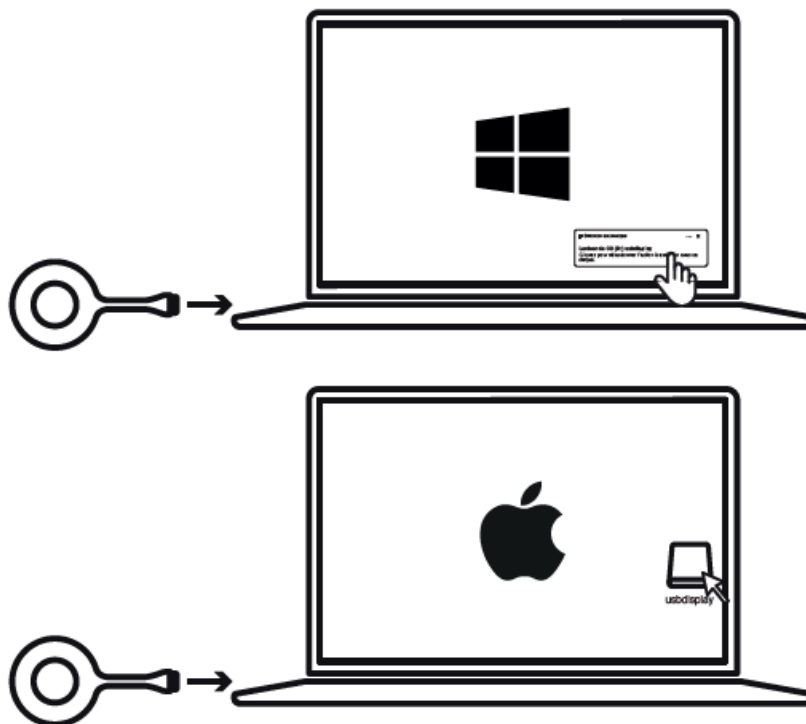
Follow these steps to pair your device:



1. Connect the transmitter to the receiver.

## Software Installation

To install the software, follow these instructions:



1. Run the program on the transmitter to retrieve the touch functionality.
2. Run the program on the transmitter and grant the necessary access to retrieve the touch functionality.

## Projection

To project your screen:



1. Connect your device to the receiver.
2. Ensure the software is running on your device.

## FAQ

- **How do I retrieve the touch functionality?**
  - Run the program on the transmitter and grant the necessary access.
- **What should I do if the projection is not working?**
  - Ensure your device is connected to the receiver and the software is running.
- **Who can I contact for support?**
  - You can contact support at [support@speechi.net](mailto:support@speechi.net).

## Contact

If you need further assistance, please contact:

- **Support:** [support@speechi.net](mailto:support@speechi.net)
- **E-mail:** [support@speechi.net](mailto:support@speechi.net)
- [www.speechi.net](http://www.speechi.net)
- **Tel:** +33 (0)320 347 425
- **Fax:** +33 (0)320 347 426

© Speechi 2024

## Documents / Resources

	<p><b><a href="#">Speechi SPE-BYOM-PRO Video Conferencing Systems</a> [pdf] User Guide</b>  SPE-BYOM-PRO Video Conferencing Systems, SPE-BYOM-PRO, Video Conferencing Systems  , Conferencing Systems, Systems</p>
--	--

## References

- [User Manual](#)

[Manuals+](#), [Privacy Policy](#)

This website is an independent publication and is neither affiliated with nor endorsed by any of the trademark owners. The "Bluetooth®" word mark and logos are registered trademarks owned by Bluetooth SIG, Inc. The "Wi-Fi®" word mark and logos are registered trademarks owned by the Wi-Fi Alliance. Any use of these marks on this website does not imply any affiliation with or endorsement.