

speechi

speechi SPE-AOC027TL
Wireless Speakerphone



speechi SPE-AOC027TL Wireless Speakerphone Owner's Manual

[Home](#) » [Speechi](#) » speechi SPE-AOC027TL Wireless Speakerphone Owner's Manual 

Contents

- [1 speechi SPE-AOC027TL Wireless Speakerphone](#)
- [2 Product Information](#)
- [3 Product Usage Instructions](#)
- [4 Quick start guide](#)
- [5 Description](#)
- [6 Usage Instructions](#)
- [7 Documents / Resources](#)
 - [7.1 References](#)
- [8 Related Posts](#)

speechi

speechi SPE-AOC027TL Wireless Speakerphone



Product Information

Specifications

- Reference: SPE-AOC027TL
- Wireless speakerphone
- AC Port for charging
- USB-C Port for connectivity
- Power button and pairing button for device setup
- Battery indicator and status indicator for monitoring
- Volume controls, mute options for microphone and audio

Product Usage Instructions

Charging the Speakerphone

Plug the speakerphone into a power outlet using the AC port to charge.

Pairing Your Device

Turn on the speakerphone and press the pairing button for 2 seconds to pair your device via Bluetooth.

Pairing with USB Dongle

Connect the USB receiver to your device and press the pairing button on the speakerphone to establish a connection.

Pairing Multiple Devices (Optional)

To pair multiple devices, repeat the pairing process by pressing the pairing button on the speakerphone and connecting the USB receiver to each new device.

Selecting Sound and Microphone Devices0

Adjust sound output settings according to your preference by selecting the appropriate speaker and microphone options.

Frequently Asked Questions (FAQ)

Q: How do I know if my speakerphone is fully charged?

A: The battery indicator will show 100% when the speakerphone is fully charged.

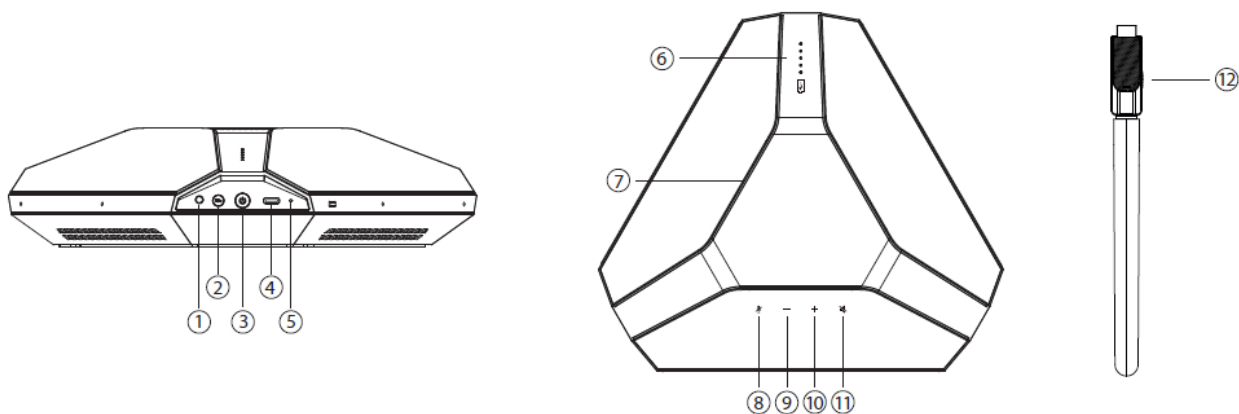
Quick start guide

Wireless speakerphone

Reference: SPE-AOC027TL

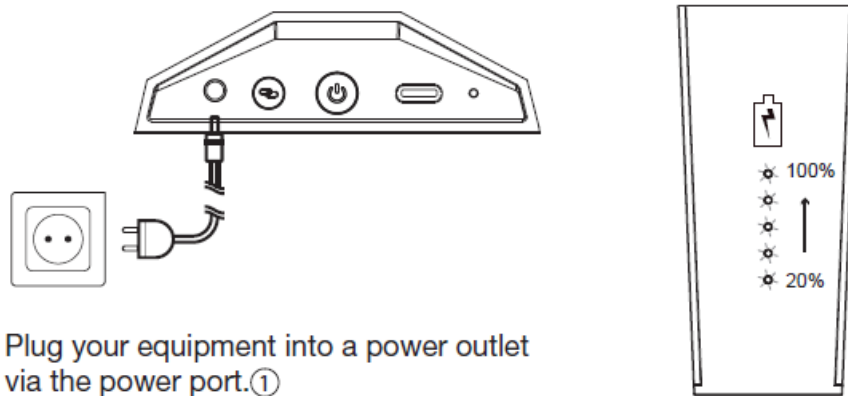
Description

1. AC PORT
2. Pairing button
3. Power button
4. USB-C Port
5. Reset
6. Battery indicator
7. Status indicator
8. Mute micro
9. Volume down
10. Mute audio
11. Volume up
12. Pairing button

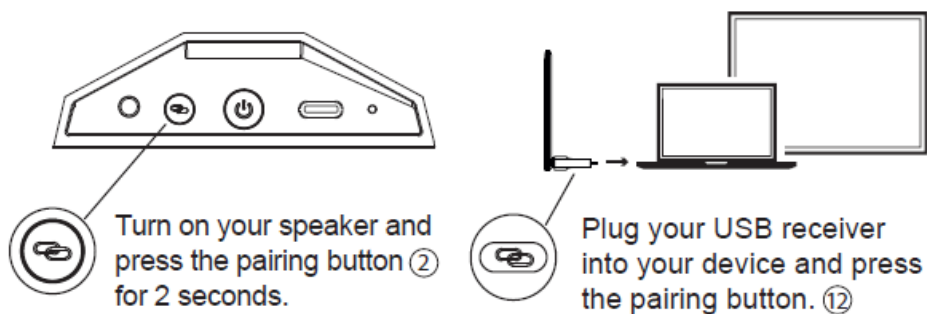


Usage Instructions

1. Charge your speakerphone.



2. Pairing your device with USB Dongle



3. Pairing multiple devices (optional)

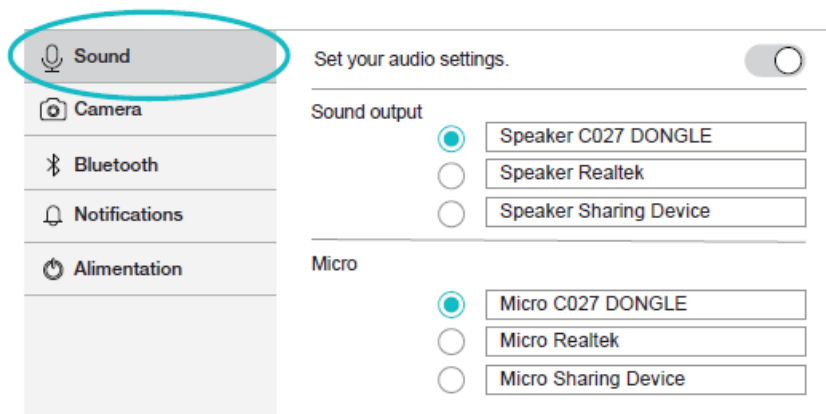


- Turn on your speaker and press the pairing button 2 for 2 seconds.



- Plug your USB receiver into your device and press the pairing button. 12

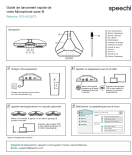
4. Select your sound and microphone devices



¹Up to a maximum of 3 devices

- **Support** et resources: speechi.com/support-micros-visioconference
- **Email:** support@speechi.com

Documents / Resources

	<p>speechi SPE-AOC027TL Wireless Speakerphone [pdf] Owner's Manual SPE-AOC027TL Wireless Speakerphone, SPE-AOC027TL, Wireless Speakerphone, Speakerphone</p>
---	--

References

-  [Speechi: Smart Interactive Whiteboard, Display & Screen](#)
- [User Manual](#)

[Manuals+](#), [Privacy Policy](#)

This website is an independent publication and is neither affiliated with nor endorsed by any of the trademark owners. The "Bluetooth®" word mark and logos are registered trademarks owned by Bluetooth SIG, Inc. The "Wi-Fi®" word mark and logos are registered trademarks owned by the Wi-Fi Alliance. Any use of these marks on this website does not imply any affiliation with or endorsement.