


Spectrum
RAC2V1S WiFi 5
Wave 2 Router



Spectrum RAC2V1S WiFi 5 Wave 2 Router User Guide

[Home](#) » [SPECTRUM](#) » Spectrum RAC2V1S WiFi 5 Wave 2 Router User Guide 

Contents

- [1 Spectrum RAC2V1S WiFi 5 Wave 2 Router](#)
- [2 Product Information](#)
- [3 Product Usage Instructions](#)
- [4 Advanced WiFi Features](#)
- [5 Personalize Your WiFi Network Name and Password](#)
- [6 Troubleshooting Your Internet Service](#)
- [7 Place your Router for the Best Coverage](#)
- [8 Technical Specification](#)
- [9 FCC STATEMENT](#)
- [10 Documents / Resources](#)
 - [10.1 References](#)
- [11 Related Posts](#)



Spectrum RAC2V1S WiFi 5 Wave 2 Router



Product Information

Specifications:

- Concurrent 2.4 GHz and 5 GHz frequency bands
- 3 to 4 Tx / Rx antenna for each frequency band with up to 4 logical data streams
- 802.11ac wave 2 WiFi chipsets with higher processing power
- Industry-standard security (WPA2 personal)
- Four GigE LAN ports
- **Radio support:** 2.4 GHz 3x3 b/g/n, 5 GHz 4x4 a/n/ac
- **Ethernet standard:** 10/100/1000
- IPv4 and IPv6 support
- **Power supply:** 12VDC/2.5A
- **Dimensions:** 4 x 3.5 x 9 inches

Product Usage Instructions

Get Started with My Spectrum App:

Scan the QR code on the back label of the router with your smartphone camera or visit spectrum.net/getappnow to download the My Spectrum App for free on iPhone and Android. Sign in with your Spectrum username and password or create one if needed.

Personalize Your WiFi Network Name and Password:

To enhance security, create a unique network name and a password with letters and numbers. You can modify

these details on Spectrum.net or through the My Spectrum App.

Troubleshooting Your Internet Service:

If you encounter slow speeds or lose your WiFi connection:

1. Move closer to the router for a stronger signal.
2. Place the router centrally for optimal coverage.
3. Restart the router to resolve most issues.

Place your Router for the Best Coverage:

- **NOT AVAILABLE:** WPS
- **USB functions**
- **Status Lights**

Ports:

- **QR Code:** Download the My Spectrum App.
- **Ethernet Port:** Connect to laptop, game console, or PC directly.
- **Internet Port:** Connects to the modem.
- **Power Plug:** Connect to your home outlet.

FAQ:

Need Help or Have Questions?

Contact Spectrum support at [855-632-7020](tel:855-632-7020) or visit spectrum.net/support for more information.

Federal Communication Commission Interference Statement:

This device complies with Part 15 of the FCC Rules and must not cause harmful interference or reject received interference.

Spectrum WiFi Router with Advanced WiFi

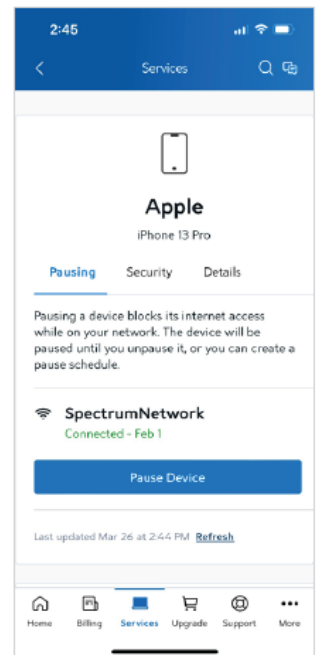
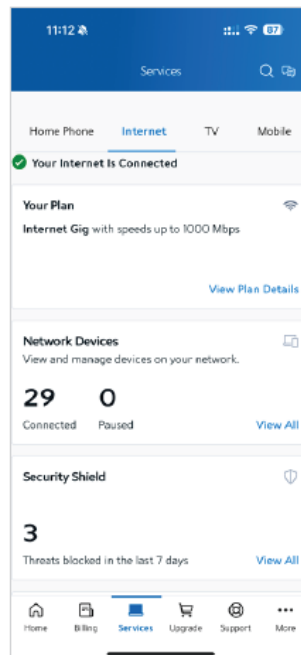
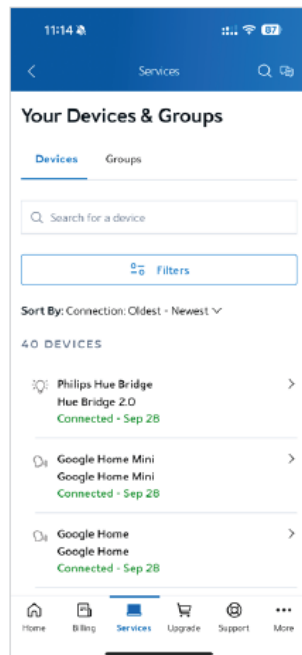
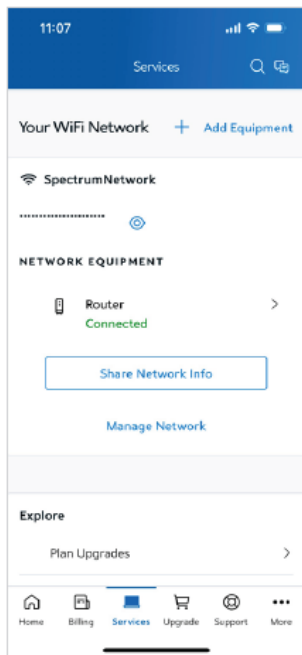
Advanced WiFi on the Spectrum WiFi router delivers internet, network security, and personalization, conveniently managed with the My Spectrum app. Your router will have a QR code on the back label to indicate support for this service.



Advanced WiFi Features

With Advanced WiFi, you can:

- Personalize your WiFi network name and password.
- Pause or resume WiFi access for a device connected to your WiFi network.
- Get port forwarding support for improved gaming performance.
- Have peace of mind with a secure WiFi network.
- Use both wireless and Ethernet connectivity.



Get Started with My Spectrum App

Scan the QR code with your smartphone camera or visit spectrum.net/getappnow.



Free on iPhone and Android



- After downloading, sign in with your Spectrum username and password.
- Don't have a Spectrum username? [Spectrum.net](https://www.spectrum.net) and select Create a Username.

Personalize Your WiFi Network Name and Password

To secure your home network, we recommend creating a unique network name and a password containing letters and numbers. You can change your network name and password on [Spectrum.net](https://www.spectrum.net) or in the My Spectrum App.

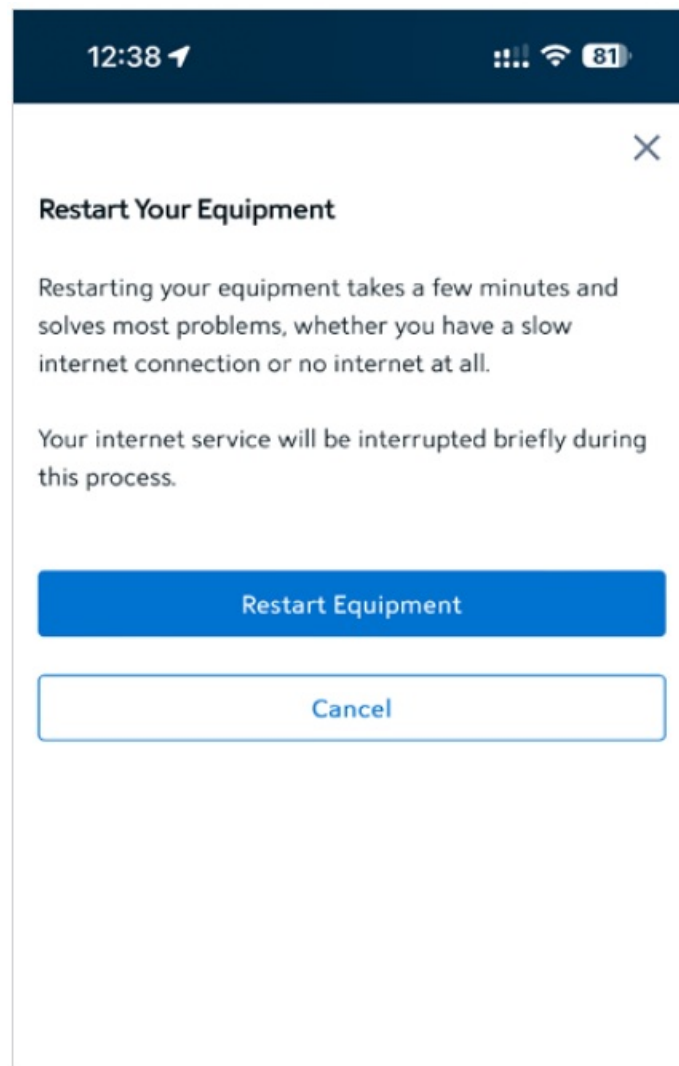
This is a screenshot of the "Edit WiFi Network Name and Password" screen in the Spectrum app. The top status bar shows the time as 11:08, signal strength, Wi-Fi, and battery. The app header is blue with a back arrow, the text "Edit Network", and a close icon. The main title is "Edit WiFi Network Name and Password". Below the title, there is a warning: "Editing your WiFi network info will disconnect any devices currently online. Use this new info to reconnect your devices." and a note: "The WiFi info on your Spectrum router will no longer be accurate." There are two input fields: "Network Name" with the text "BriansHouse" and "Network Password" with a masked password of 12 dots. A blue "Save" button is at the bottom.This is a screenshot of the "Save Changes" confirmation dialog in the Spectrum app. The top status bar shows the time as 11:08, signal strength, Wi-Fi, and battery. The dialog has a close icon in the top right. The title is "Save Changes". The text reads: "This will automatically disconnect all the devices from your current WiFi network. Make sure to update the WiFi settings on your devices with your new name or password." There are two buttons: a blue "Yes, Continue" button and a grey "Cancel" button.

Troubleshooting Your Internet Service

If you're experiencing slow speeds or if you lose connection to your WiFi network, try the following:

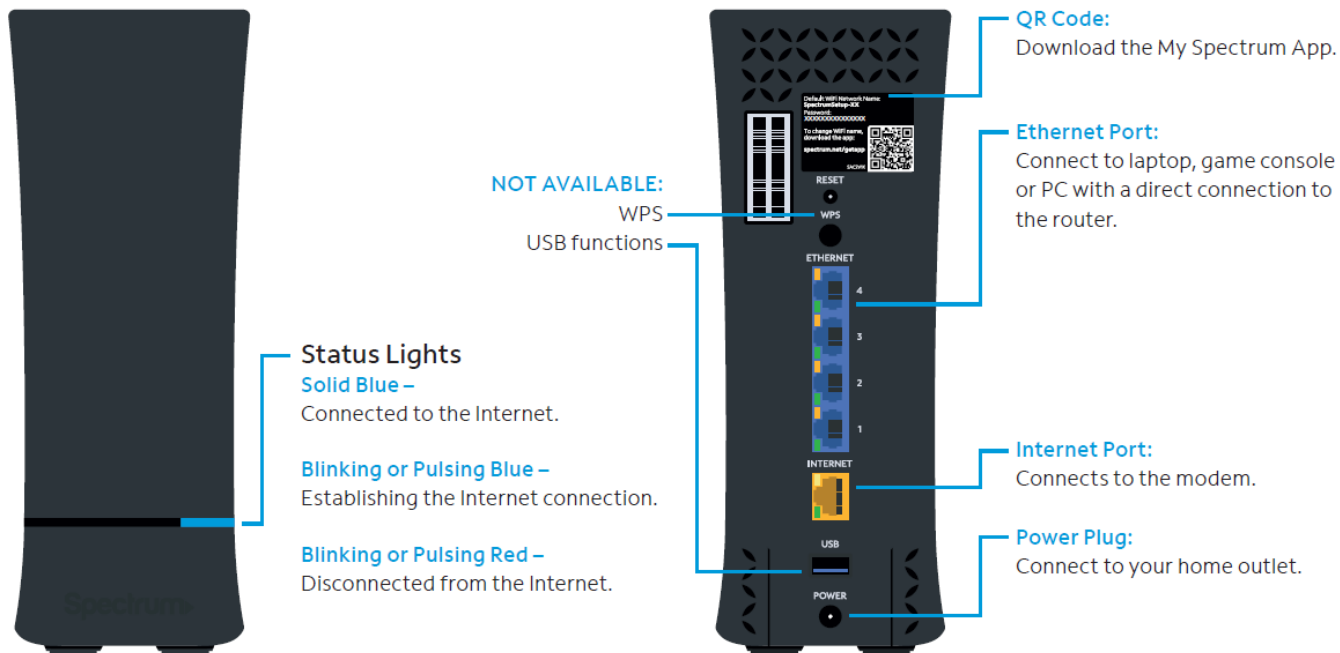
1. **Move closer to the router:** The farther away you are, the weaker the signal will be.

2. **Adjust router location:** Your router should be placed in a central location for the best coverage.
3. **Restart your router:** Restarting your router solves most problems, whether you have a slow connection or no internet at all.



Place your Router for the Best Coverage

- Personalize your WiFi network name and password.
- Do place it in a central location.
- Place it on a raised surface.
- Do place it in an open space.
- Don't place it in a media center or closet.
- Don't place near devices like cordless phones that emit wireless radio signals.
- Don't place it behind a TV.



Technical Specification

Features	Benefits
Concurrent 2.4 GHz and 5 GHz frequency bands	Supports existing client devices in the home, and all newer devices using higher frequencies. Provides flexibility in range for WiFi signal to cover the home.
3 to 4 Tx / Rx antenna for each frequency band with up to 4 logical data streams	Higher throughput and increased range provide improved experience. Delivers higher data rates for the 2.4 GHz and 5 GHz frequencies.
802.11ac wave 2 WiFi chipsets with higher processing power.	Supports consistent performance and higher density of WiFi devices connecting to the network.
Industry-standard security (WPA2 personal)	Supports the industry security standard to protect devices on the WiFi network.
Four GigE LAN ports	Connect stationary computers, game consoles, printers, media sources, and other devices on the private network for high-speed service.
More specs	Radio support: 2.4 GHz 3x3 b/g/n 5 GHz 4x4 a/n/ac Ethernet standard: 10/100/1000 IPv4 and IPv6 support Power supply: 12VDC/2.5A Dimensions: 4" x 3.5" x 9"

Need Help or Have Questions?

We're here for you. To learn more about your services or get support, visit spectrum.net/support or call us at [855-632-7020](tel:855-632-7020).

FCC STATEMENT

Federal Communication Commission Interference Statement

This device complies with Part 15 of the FCC Rules. Operation is subject to the following two conditions: (1) This device may not cause harmful interference, and (2) this device must accept any interference received, including interference that may cause undesired operation.

This equipment has been tested and found to comply with the limits for a Class B digital device, under Part 15 of the FCC Rules. These limits are designed to provide reasonable protection against harmful interference in a residential installation. This equipment generates, uses, and can radiate radio frequency energy and, if not installed and used under the instructions, may cause harmful interference to radio communications. However, there is no guarantee that interference will not occur in a particular installation. If this equipment does cause harmful interference to radio or television reception, which can be determined by turning the equipment off and on, the user is encouraged to try to correct the interference by one of the following measures:

- Reorient or relocate the receiving antenna.
- Increase the separation between the equipment and the receiver.
- Connect the equipment to an outlet on a circuit different from that to which the receiver is connected.
- Consult the dealer or an experienced radio/TV technician for help.

FCC Caution:

Any changes or modifications not expressly approved by the party responsible for compliance could void the user's authority to operate this equipment.

This transmitter must not be co-located or operating in conjunction with any other antenna or transmitter.

This device meets all the other requirements specified in Part 15E, Section 15.407 of the FCC Rules.

Radiation Exposure Statement:

This equipment complies with FCC radiation exposure limits set forth for an uncontrolled environment. This equipment should be installed and operated with a minimum distance of 20cm between the radiator & your body.

Note:

The country code selection is for non-US models only and is not available to all US models. Per FCC regulation, all WiFi products marketed in the US must be fixed to US operation channels only.

FCC regulations restrict the operation of this device to indoor use only.

The operation of this device is prohibited on oil platforms, cars, trains, boats, and aircraft, except that operation of this device is permitted in large aircraft while flying above 10,000 feet.

© 2023 Charter Communications, all rights reserved.

Documents / Resources



Spectrum RAC2V1S WiFi 5 Wave 2 Router [pdf] User Guide
RAC2V1S WiFi 5 Wave 2 Router, RAC2V1S, WiFi 5 Wave 2 Router, Wave 2 Router, Router

References

- [▶ Spectrum.net](#)
- [▶ My Spectrum - Apps on Google Play](#)
- [▶ Spectrum.net](#)
- [User Manual](#)

[Manuals+](#), [Privacy Policy](#)

This website is an independent publication and is neither affiliated with nor endorsed by any of the trademark owners. The "Bluetooth®" word mark and logos are registered trademarks owned by Bluetooth SIG, Inc. The "Wi-Fi®" word mark and logos are registered trademarks owned by the Wi-Fi Alliance. Any use of these marks on this website does not imply any affiliation with or endorsement.