




[Home](#) » [SPECTRUM](#) » **Spectrum 20240729 WiFi 6E Router User Guide** 

Contents [hide](#)

- [1 Spectrum 20240729 WiFi 6E Router](#)
- [2 Spectrum WiFi 6E Router Technical Specs](#)
- [3 Federal Communication Commission Interference Statement](#)
- [4 Frequently Asked Questions](#)
- [5 Documents / Resources](#)
 - [5.1 References](#)
- [6 Related Posts](#)



Spectrum 20240729 WiFi 6E Router



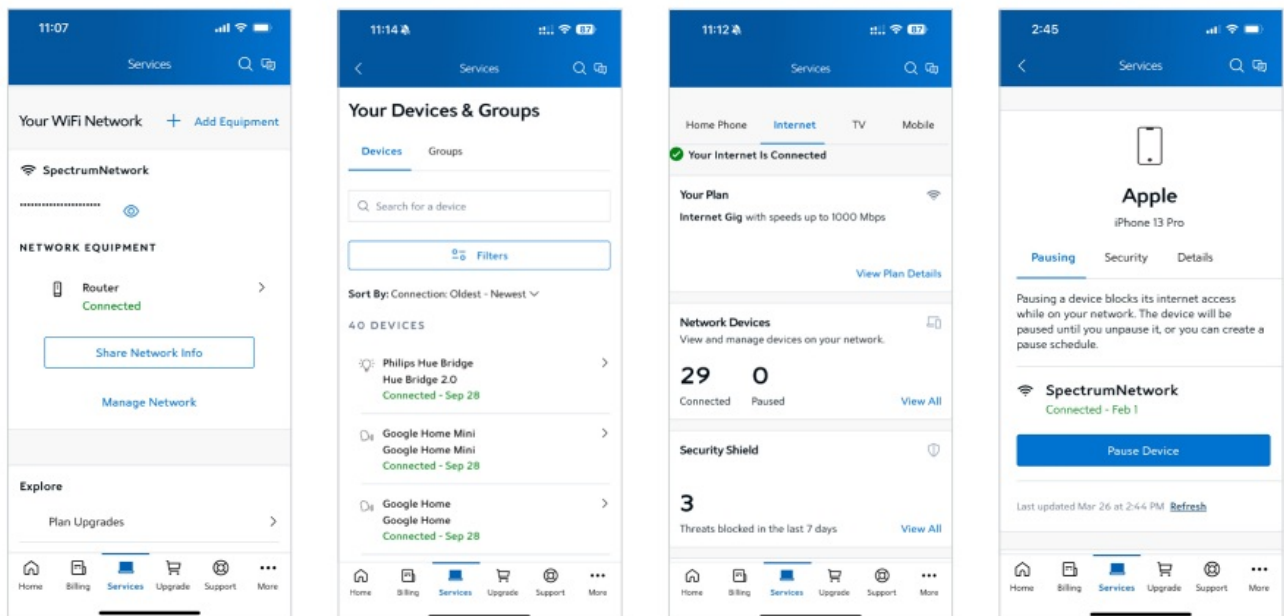
Advanced Home WiFi

Your Spectrum WiFi 6E router delivers Advanced WiFi. You can conveniently manage your internet, network security and personalization settings in the My Spectrum App.

Scan the QR code on the router's back label to download the My Spectrum App.

With Advanced Home WiFi, you can:

- Set up a Spectrum WiFi Profile to access Spectrum Out-of-Home WiFi access points.
- Customize your WiFi network name (SSID) and password.
- View and manage devices connected to your WiFi network.
- Troubleshoot your equipment and fix service-related issues.
- Add, remove, pause or resume WiFi access for a device or group of devices on your network.
- Get port forwarding support for improved gaming performance.
- Turn off/turn on UPnP support.
- Ability to configure the DNS server address.
- Have peace of mind with a secure WiFi network featuring Spectrum Security Shield.
- Use both wireless and Ethernet connectivity.
- Add or remove up to 5 WiFi Pods per router.
- Browse your current plans, add services, upgrade your service and view current offers.

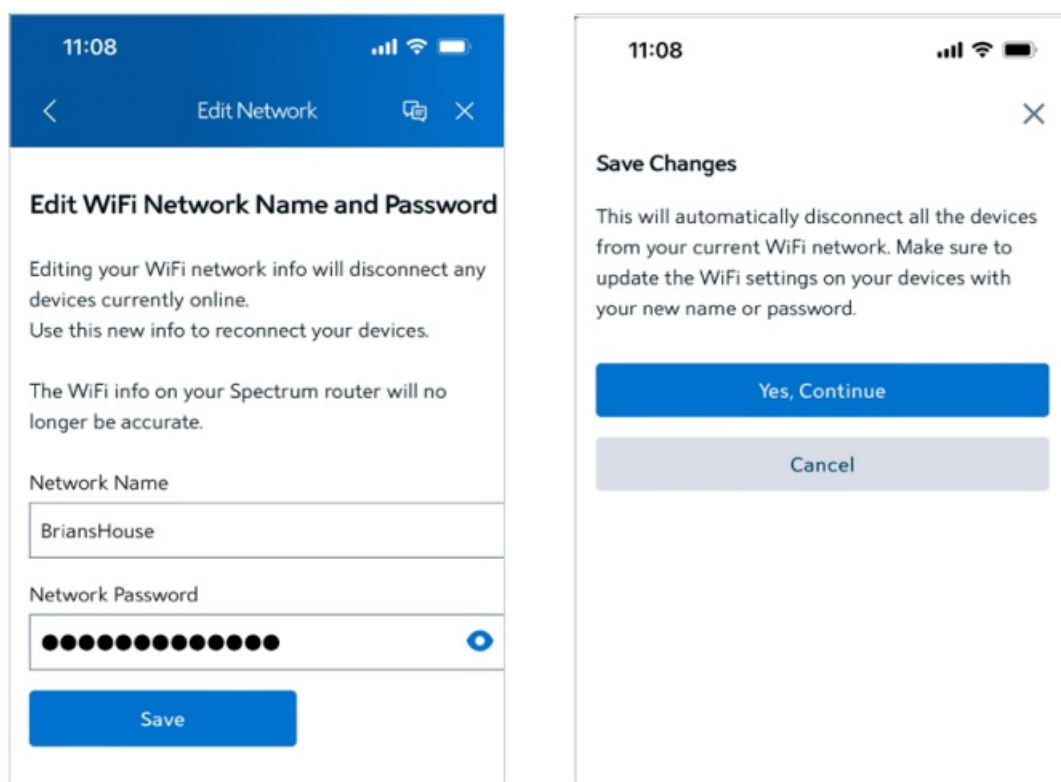


Get Started with My Spectrum App

Scan the QR code with your smartphone camera or visit spectrum.net/getappnow

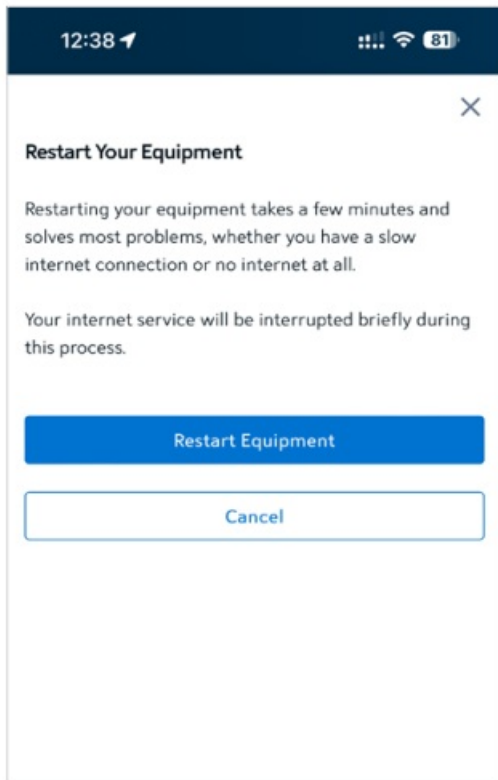


Android After downloading, sign in with your Spectrum username and password. Don't have a Spectrum username? [Spectrum.net](https://www.spectrum.net) and select Create a Username. Personalize Your WiFi Network Name and Password To secure your home network, we recommend creating a unique network name and a password containing letters and numbers. You can change your network name and password on [Spectrum.net](https://www.spectrum.net) or in the My Spectrum App.



Troubleshooting Your Internet Service If you're experiencing slow speeds or if you lose connection to your WiFi network, try the following:

1. Move closer to the router: The farther away you are, the weaker the signal will be.
2. Adjust router location: Your router should be placed in a central location for the best coverage.
3. Restart your router: Restarting your router solves most problems, whether you have a slow connection or no internet at all.



Where to place your router for the best coverage

- In a central location
- On a raised surface
- In an open space

Router locations to avoid

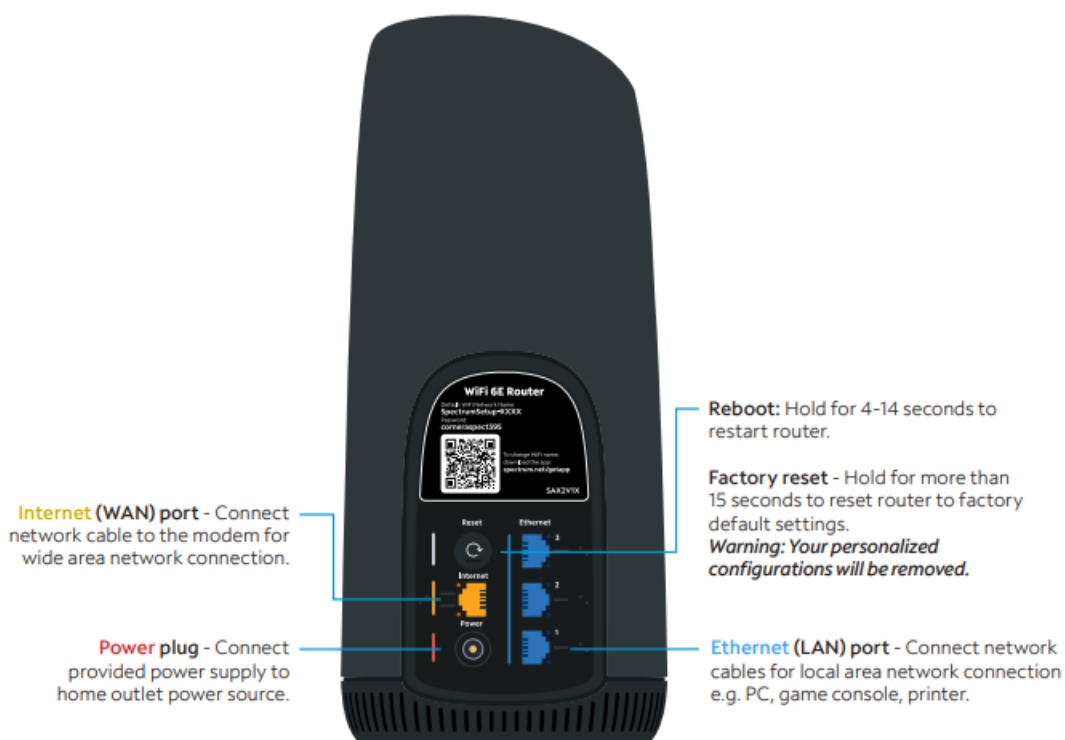
- In a media center or closet
- Near devices like cordless phones that emit wireless radio signals
- Behind a TV

Spectrum WiFi 6E Router with Advanced WiFi The front panel has a light that indicates the router's status while starting up your home network.



Spectrum WiFi 6E Router with

Advanced Home WiFi The router's back panel features:



Spectrum WiFi

6E Router with Advanced Home WiFi

The router's label callouts:



Spectrum WiFi 6E Router Technical Specs

Features

IEEE 802.11a/b/g, WiFi 4 (802.11n),
 WiFi 5 (802.11ac), & WiFi 6E
 (802.11ax-2020) support
 Concurrent 2.4 GHz, 5 GHz, and 6
 GHz frequency band support

Benefits

- Supports existing client devices in the home and frequencies, including the latest WiFi 6E capable
- Provides flexibility in range for WiFi signal to cov
- Future capability upgrade to support AFC (Autor which enables the WiFi 6E router to potential inc radio from LPI (Low Power Indoor) default mode Enables the 6 GHz band to have almost the san band.

2.4 GHz WiFi Radio – 802.11ax

4×4:4Passive Antenna

5 GHz WiFi Radio – 802.11ax

4×4:4Active Antenna

6 GHz WiFi Radio – 802.11ax

4×4:4Active Antenna

- More data per packet transition provides higher improving experience, especially in client dense
- Delivers higher data rates and bandwidth for the bands as well as support for almost 1,200 MHz
- Unified SSID enables intelligent client steering – connectivity to best frequency band, channel, ar
- Prevents client devices from “sticking” to a spec client moves around or if the channel becomes c interference.

WiFi Channel Bandwidths

- 2.4 GHz – 20 / 40 MHz
- 5 GHz – 20 / 40 / 80 / 160 MHz (includes lower
- 6 GHz – 20 / 40 / 80 / 160 MHz (excludes first 16

802.11ax-2020 WiFi 6E chipsets
with higher processing power

Supports consistent performance where there is a connecting to the network. Powerful chips encode network and device management.

Latest industry-standard WiFi security
(WPA3 / WPA2 Transition, WPA3
Personal)

Supports both WPA3 Personal (2022 version) stan security standard available to date, and WPA2 Per devices on the WiFi network. Note: 6 GHz band on Connect stationary computers, game consoles, pri other devices on the private network for high-speed

Three GigE LAN ports

- IEEE 802.3e 10BASE-T
- IEEE 802.3u 100BASE-TX
- IEEE 802.3ab 1000BASE-T

Connect to Internet port of Cable Modem, Spectru

MultiGig WAN port

- IEEE 802.3bz 2.5GBASE-T

More specs

- Integrated fan provides optimum temperature re (under 30dBA) even under the most demanding
- IPv4 and IPv6, DHCP, DSCP tag support, Wi-Fi with Spectrum WiFi Pods, Spectrum Mobile Spe
- Universal Input Power supply: 12VDC/3A
- Dimensions: 10.7" x 4.8" x 3"

Need Help or Have Questions?

We're here for you. To learn more about your services or get support, visit spectrum.net/support or call us at [855-632-7020](tel:855-632-7020).

Federal Communication Commission Interference Statement

This device complies with Part 15 of the FCC Rules. Operation is subject to the following two conditions:

1. This device may not cause harmful interference, and
2. This device must accept any interference received, including interference that may cause undesired operation.

This equipment has been tested and found to comply with the limits for a Class B digital device, pursuant to Part 15 of the FCC Rules. These limits are designed to provide reasonable protection against harmful interference in a residential installation. This equipment generates, uses and can radiate radio frequency energy and, if not installed and used in accordance with the instructions, may cause harmful interference to radio communications. However, there is no guarantee that interference will not occur in a particular installation. If this equipment does cause harmful interference to radio or television reception, which can be determined by turning the equipment off and on, the user is encouraged to try to correct the interference by one of the following measures:

- Reorient or relocate the receiving antenna.
- Increase the separation between the equipment and receiver.

- Connect the equipment into an outlet on a circuit different from that to which the receiver is connected.
- Consult the dealer or an experienced radio/TV technician for help.

FCC Caution: Any changes or modifications not expressly approved by the party responsible for compliance could void the user's authority to operate this equipment. This transmitter must not be co-located or operating in conjunction with any other antenna or transmitter. This device meets all the other requirements specified in Part 15E, Section 15.407 of the FCC Rules.

Radiation Exposure Statement:

This equipment complies with FCC radiation exposure limits set forth for an uncontrolled environment. This equipment should be installed and operated with minimum distance 20cm between the radiator & your body.

Note: The country code selection is for non-US model only and is not available to all US model. Per FCC regulation, all WiFi product marketed in US must fixed to US operation channels only.

FCC regulations restrict the operation of this device to indoor use only.

- The operation of this device is prohibited on oil platforms, cars, trains, boats, and aircraft, except that operation of this device is permitted in large aircraft while flying above 10,000 feet.
- Operation of transmitters in the 5.925-7.125 GHz band is prohibited for control of or communications with unmanned aircraft systems.

Frequently Asked Questions

• Q: How do I reset the router to factory default settings?

A: Hold the factory reset button on the back panel for more than 15 seconds. Note that this action will remove personalized configurations.

• Q: Can I change my WiFi network name and password?

A: Yes, you can change your network name and password through Spectrum.net or the My Spectrum App for enhanced security.

- **Q: What should I do if I face slow internet speeds?**

A: Try moving closer to the router, placing it centrally, or restarting it to resolve connectivity issues.

Documents / Resources



[Spectrum 20240729 WiFi 6E Router \[pdf\] User Guide](#)

20240729, 20240729 WiFi 6E Router, 20240729, WiFi 6E Router, 6E Router, Router

References

- [▶ Spectrum.net](#)
- [▶ My Spectrum - Apps on Google Play](#)
- [▶ Spectrum.net](#)
- [User Manual](#)

Related Posts



[NETGEAR RAXE500 WiFi 6E Router User Guide](#)

RAXE500 WiFi 6E Router Pikaopas 1 Lataa Nighthawksovellus, jotta voit asentaa reitittimen Lataa Nighthawk-sovellus mobiililaitteeseesi ja seuraa

asennusohjeita....



[Spectrum SAXV1V1S WiFi 6 Router User Guide](#)

SAXV1V1S WiFi 6 Router User Guide SAXV1V1S WiFi 6 Router Advanced In-Home WiFi Advanced In-Home WiFi is included...

[NETGEAR R7000 Smart WiFi Router User Manual](#)



Spectrum WiFi 6 Router User Guide



Spectrum WiFi 6 Router Spectrum WiFi 6 Router User Guide Advanced In-Home WiFi Advanced In-Home WiFi is included...

■SPECTRUM◆20240729, 20240729 WiFi 6E Router, 6E Router, router, spectrum, WiFi 6E Router

[Previous Post](#)

[spectrum V12 WiFi 7 Router User Guide](#)

Leave a comment

Your email address will not be published. Required fields are marked *

Comment *

Name

Email

Website

☐ Save my name, email, and website in this browser for the next time I comment.

This website is an independent publication and is neither affiliated with nor endorsed by any of the trademark owners. The "Bluetooth®" word mark and logos are registered trademarks owned by Bluetooth SIG, Inc. The "Wi-Fi®" word mark and logos are registered trademarks owned by the Wi-Fi Alliance. Any use of these marks on this website does not imply any affiliation with or endorsement.