



Speco O8FBMS1 Network Camera User Guide

[Home](#) » [Speco](#) » Speco O8FBMS1 Network Camera User Guide 



Contents

- [1 Welcome](#)
- [2 Important Safeguards and Warning](#)
- [3 Warning](#)
- [4 Statement](#)
- [5 Package](#)
- [6 Overview](#)
- [7 Connecting Network Cable](#)
- [8 Installation](#)
- [9 Web Operation and Login](#)
- [10 Operation](#)
- [11 Documents / Resources](#)
- [12 Related Posts](#)

Welcome

Thank you for purchasing this network camera!

This owner's manual is designed to be a reference tool for your system.

Please read this manual carefully before operating the unit and retain it for future reference.

Should you require any technical assistance, contact Speco Technologies Tech Support at 1-800-645-5516

Important Safeguards and Warning

1. Electrical safety

All installation and operation here should conform to local electrical safety codes.

Use a certified/listed 12VDC Class 2 power supply only.

Please note: Do not connect two power supplying sources to the device at the same time; it may result in device damage! The product must be grounded to reduce the risk of electric shock.

Improper handling and/or installation could run the risk of fire or electrical shock.

2. Environment

Heavy stress, violent vibration or exposure to water is not allowed during transportation, storage, and installation.

This product should be installed in a cool, dry place away from direct sunlight and heat sources.

Do not install the product in extreme temperature conditions.

Do not expose the camera to electromagnetic radiation. Otherwise, it may result in CMOS sensor failure.

Do not block any ventilation openings.

Do not allow water and liquid intrusion into the camera.

3. Operation and Daily Maintenance

Please shut down the device and then unplug the power cable before you begin any maintenance work.

Do not touch the CMOS sensor optic component. You can use a blower to clean the dust on the lens surface.

Always use a dry soft cloth to clean the device. If there is too much dust, use a cloth dampened with a small quantity of neutral detergent. Finally, use a dry cloth to clean the device.

Please use a professional optical cleaning method to clean the enclosure. Improper enclosure cleaning (such as using cloth) may result in poor IR functionality and/or IR reflection. The grounding holes of the product are recommended to be grounded to further enhance the reliability of the camera.

Warning

This camera should be installed by qualified personnel only.

All the examination and repair work should be done by qualified personnel.

Any unauthorized changes or modifications could void the warranty.

Statement

This guide is for reference only.

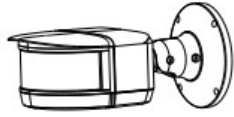
Product, manuals, and specifications may be modified without prior notice. Speco Technologies reserves the right to modify these without notice and without incurring any obligation.

Speco Technologies is not liable for any loss caused by improper operation.

Note:

Before installation, check the package and make sure that all components are included. Contact your rep or Speco customer service department immediately if something is broken or missing in the package.

Package



Camera



Quick start guide



Screwdriver



4 tapping screws



Plastic plug ×4



Rubber plug



Drill template

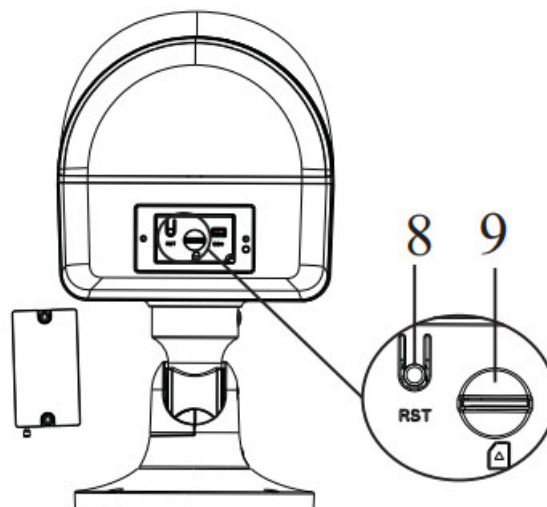
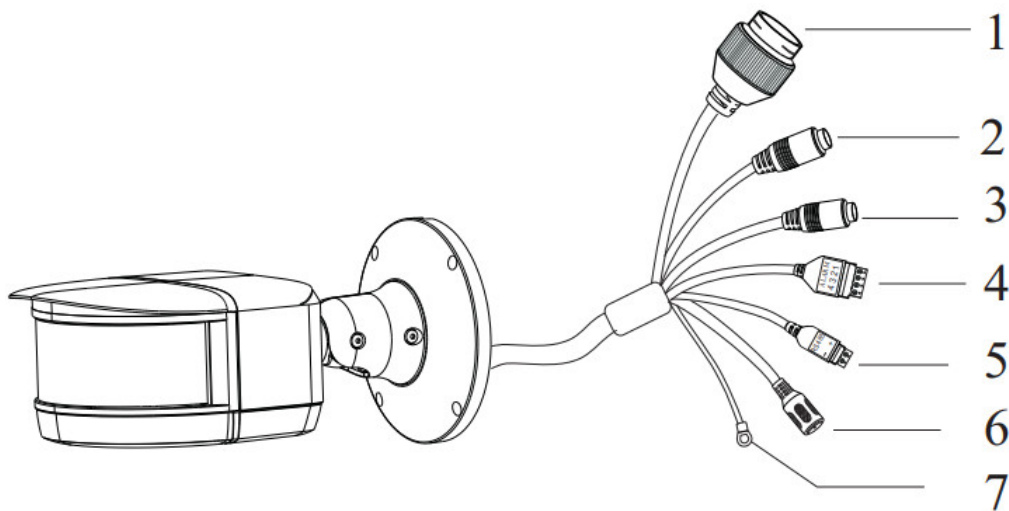


CD



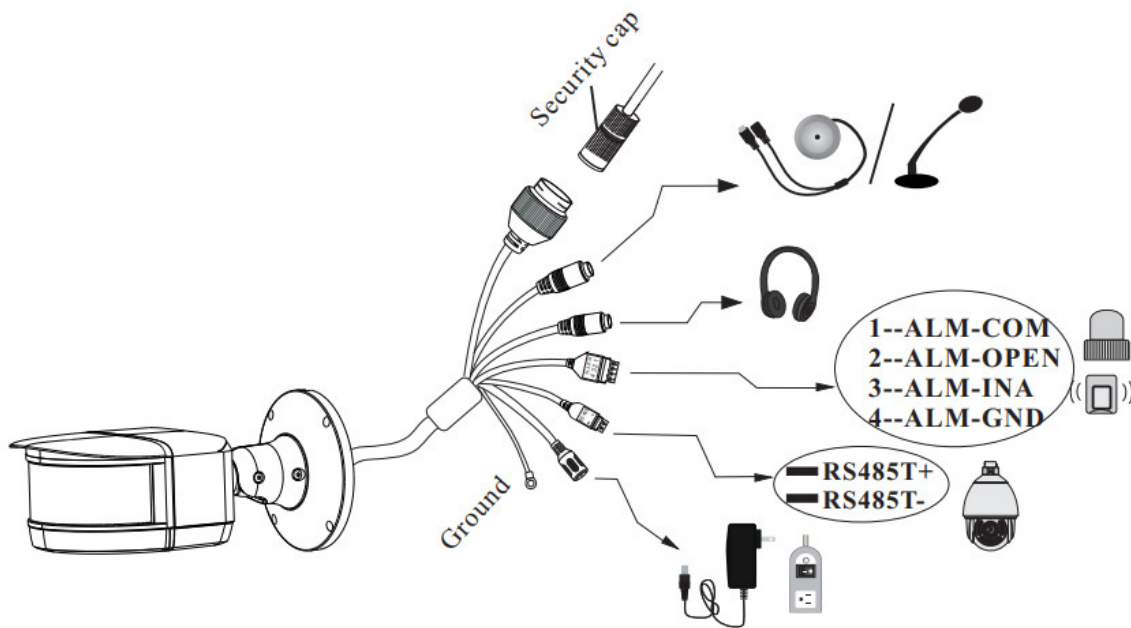
Junction box

Overview



1 Ethernet Connector *
2 Audio Input (MIC)
3 Audio Output (HP)
4 Alarm Input/Output
5 RS485

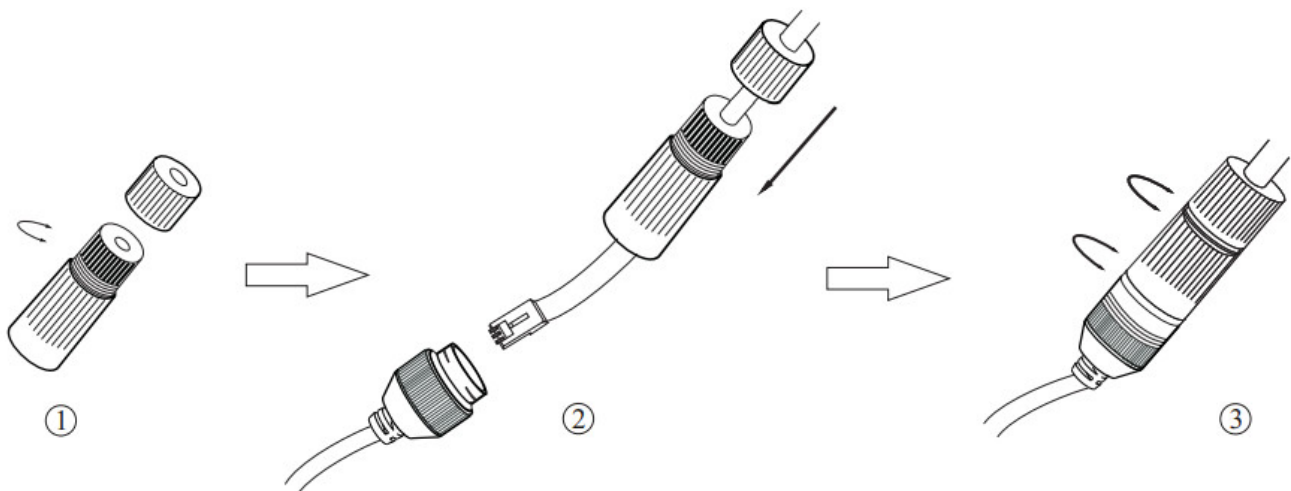
6 Power Connector *
7 Ground
8 Reset
9 Micro SD Card Slot



* 1 It is recommended to install the security cap for outdoor installations.

* 2 DC 12V power supply is not required if a PoE switch or injector is used to power the camera.

Connecting Network Cable



1. Loosen the nut from the main element.

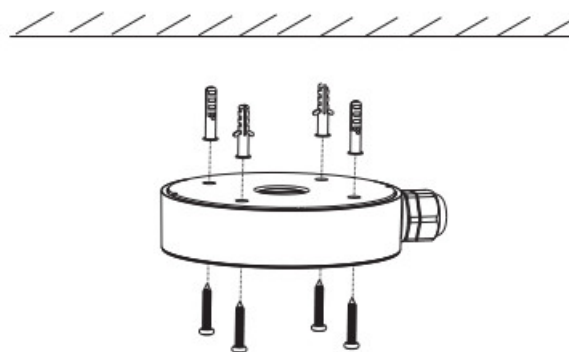
2. Run the network cable (without RJ 45 connector) through both elements. Then crimp the cable with RJ 45 connector.

3. Connect the cable to the hermetic connector. Then tighten the and the main cover.

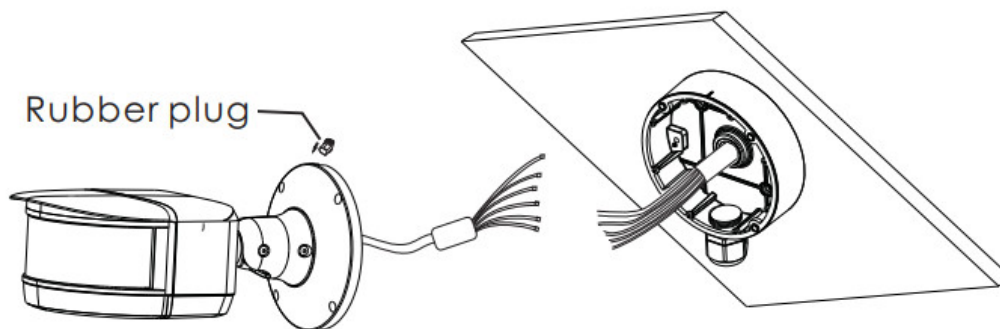
Installation

* Before you start, please make sure that the wall or ceiling is strong enough to withstand three times the weight of the camera.

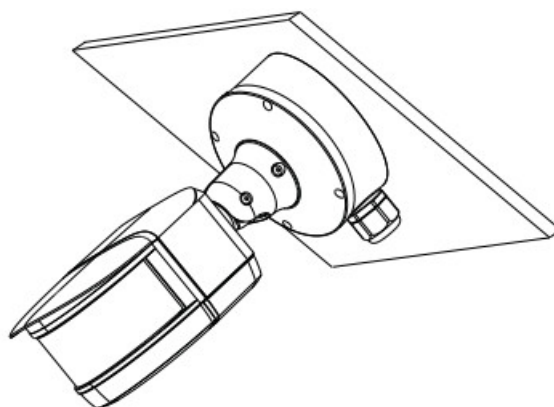
1. Mount the junction box to the wall or ceiling with screws.



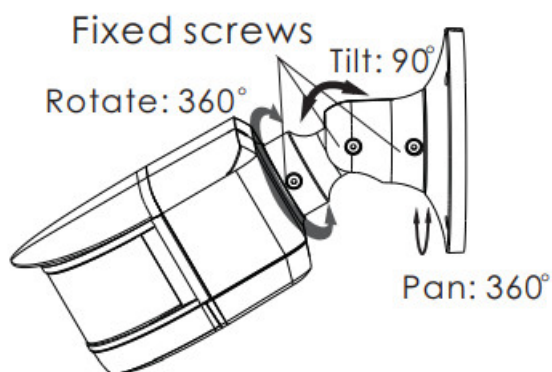
2. Route the cables and connect the relevant cables (Take cable going through mounting surface for example).



3. Fix the camera onto the junction box with screws.



4. Bracket adjustment. Before adjustment, preview the image of the camera on a monitor and then loosen the fixed screws to adjust the view angle of the camera. After that, tighten the fixed screws.

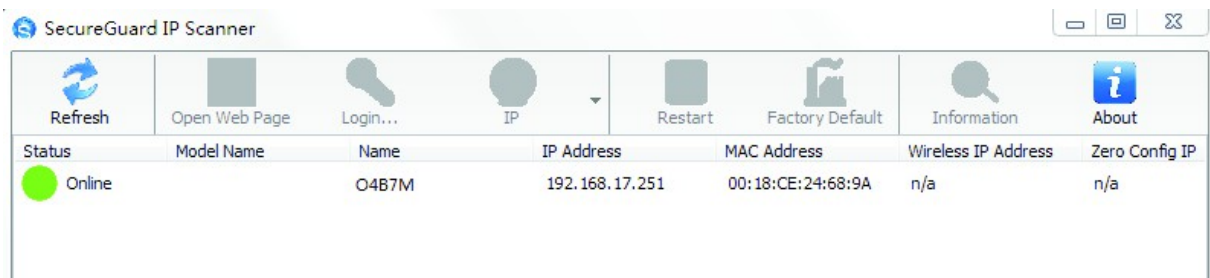


Web Operation and Login

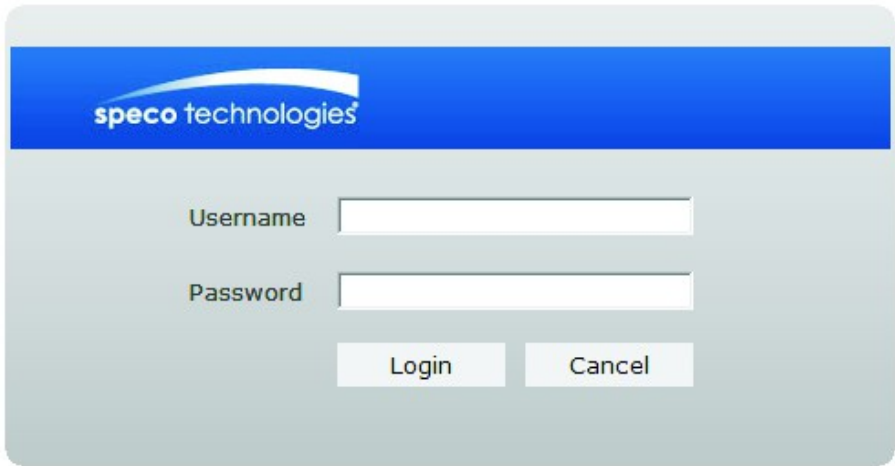
IP Scanner can search for the device on the local network.

Operation

- 1. Make sure that the camera and the PC are connected to the same local network. The camera is set to DHCP by default.
- 2. Install IP Scanner from the CD and run it after installation.




- 3. In the device list, you can view the IP address, model number, and MAC address of each device. Select the applicable device and double-click to open up the web viewer. You can also manually enter the IP address in the address bar of the web browser.



The login interface is shown above. The default user name is admin and the password is 1234. After logging in, follow the directions to install applicable plugins.

Documents / Resources

	Speco Speco O8FBMS1 Network Camera [pdf] User Guide O8FBMS1, Speco, Network Camera
---	---