



speco technologies USE44-2MP TE3 Analog Camera User Manual

[Home](#) » [speco technologies](#) » speco technologies USE44-2MP TE3 Analog Camera User Manual 

Contents

- 1 [speco technologies USE44-2MP TE3 Analog Camera](#)
- 2 [Introduction](#)
- 3 [Introduction](#)
- 4 [Cables](#)
- 5 [Installation](#)
- 6 [Mounting for H2AB2](#)
- 7 [Mounting for H2AT2](#)
- 8 [Specifications](#)
- 9 [Documents / Resources](#)
 - 9.1 [References](#)
- 10 [Related Posts](#)



speco technologies USE44-2MP TE3 Analog Camera



Introduction

Thank you for purchasing our product. Speco Technologies is constantly developing and improving products. We reserve the right to modify product design and specifications without notice and without incurring any obligation.

Warnings

This camera series is the latest technology and advanced circuit design, which features high definition and sensitivity, low noise and distortion, and supports HD video transmission with the common coaxial cable, ensuring the requirement of HD monitoring in the traditional surveillance system.

Warnings

- If the product does not work properly, please contact the dealer or where the product was purchased. Speco Technologies is not responsible for any problems caused by improper operation or repair.
- Do not expose the unit to heavy stress, violent vibration or long-term exposure to water and humidity during transportation, storage, and/or installation.
- Do not install near sources of heat.
- Only install the product in environments inside the specification operating temperature and humidity range.
- Do not install the camera near power lines, radar equipment or other electromagnetic radiation.
- Do not block any ventilation openings if any.
- Use all the weatherproofing hardware requirement to minimize weather intrusion.

Introduction

This camera series is the latest technology and advanced circuit design, which features high definition and sensitivity, low noise and distortion and supports HD video transmission with the common coaxial cable, ensuring the requirement of the HD monitoring in the traditional surveillance system.

High Resolution

Adopt high performance sensor, providing high definition and clear image.

High Transmission Performance

Real-time transmission with high speed and long distance.

DNR

Reduce noise from brightness and color signal.

OSD

Access the camera settings which can be clearly displayed through the main menu.

White Balance

Adjust the color temperature according to the environment automatically.

AGC

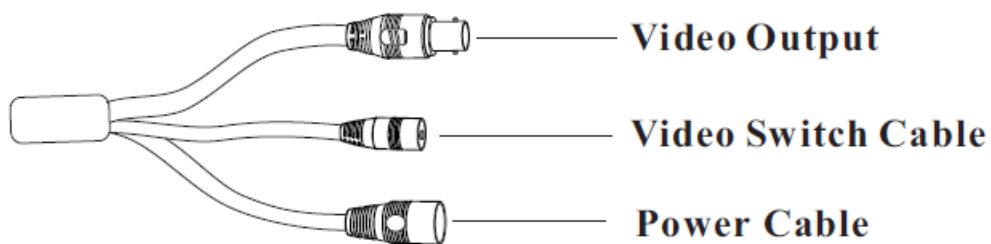
Adjust the gain of amplifier, enabling the camera to output the standard video signal in different lighting condition.

Backlight Compensation (BLC)

When the back of the captured object is too much bright, you can set BLC for the captured object to make it clearer.

Coaxial audio transmission

Cables



Video Switch: Four video output modes can be optional—AHD, TVI, CVI and CVBS (a) remove the cover of the video switch cable; (b) hold and press the button in the video switch cable for 5 seconds to switch the current video output.

Installation

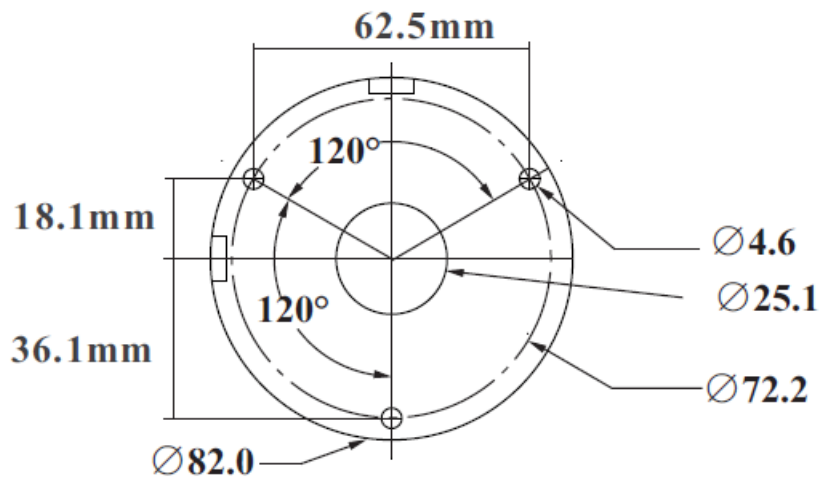
Before you start, please make sure that the wall or ceiling is strong enough to withstand three times the weight of the camera. Please install and use the camera in the dry environment.

You'd better install back the lens cover or lower dome less than 4 hours after removing it.

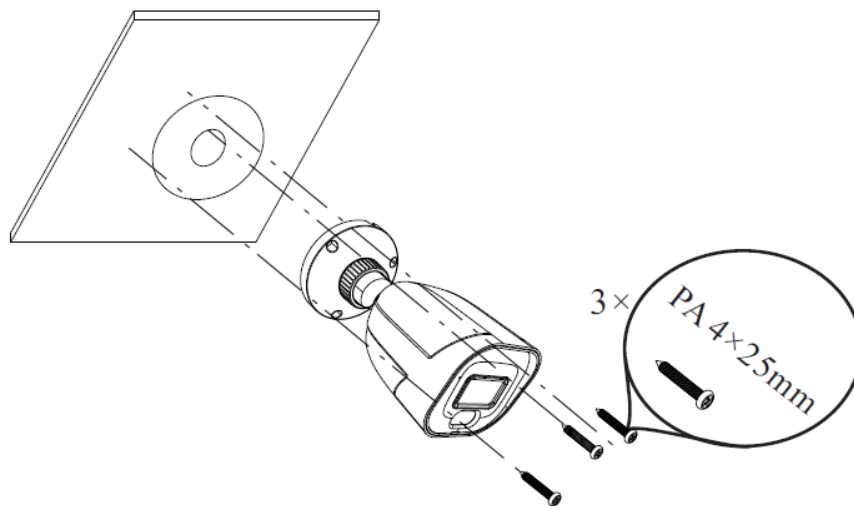
The mounting types of cameras are only for reference.

Mounting for H2AB2

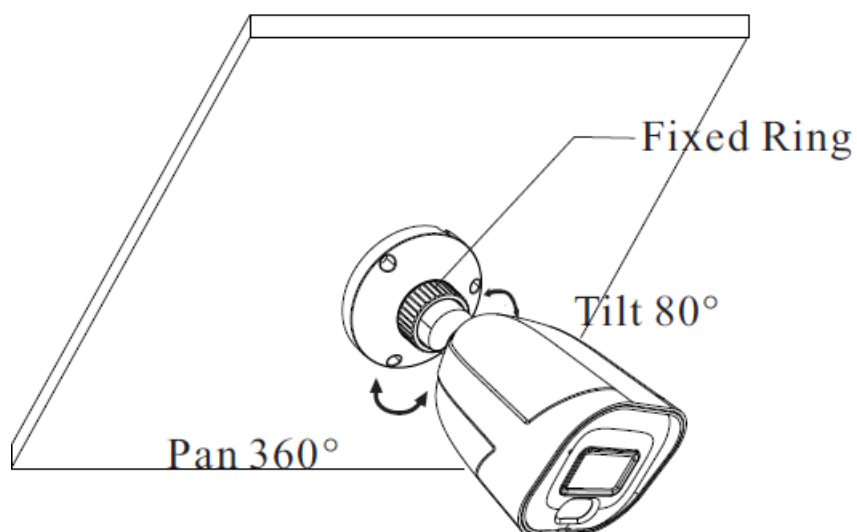
1. Drill the screw holes and the cable hole on the wall according to the drill template.



2. Route and connect the cables .
3. Secure the mounting base with camera to the wall with screws as shown below.

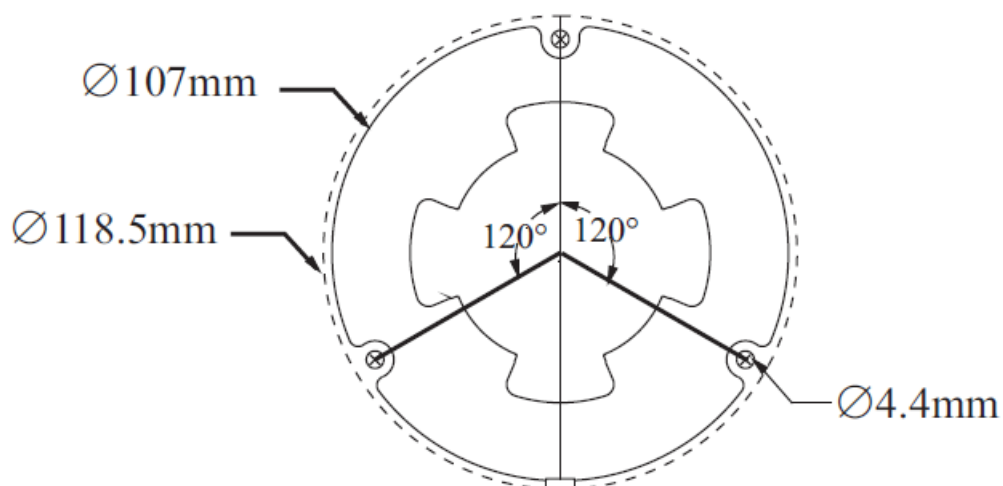


4. Bracket adjustment. Before adjustment, preview the image of the camera on a monitor and then loosen the fixed ring to adjust the view angle of the camera. Tighten the fixed ring after the adjustment.

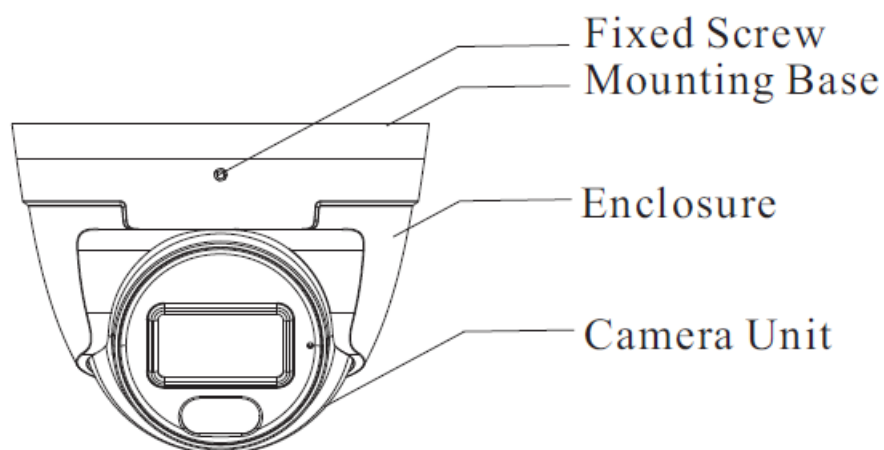


Mounting for H2AT2

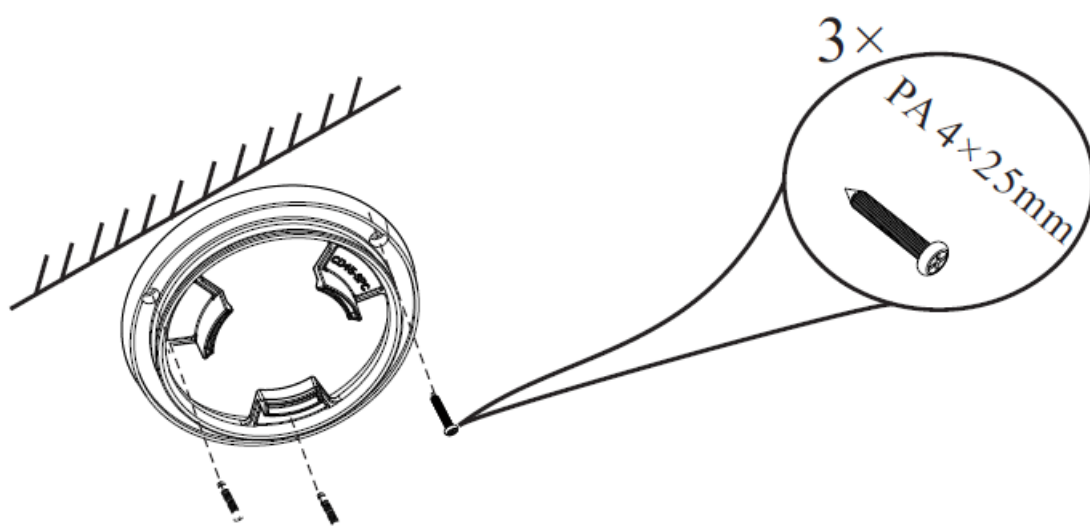
1. Drill the screw holes on the wall according to the drill template.



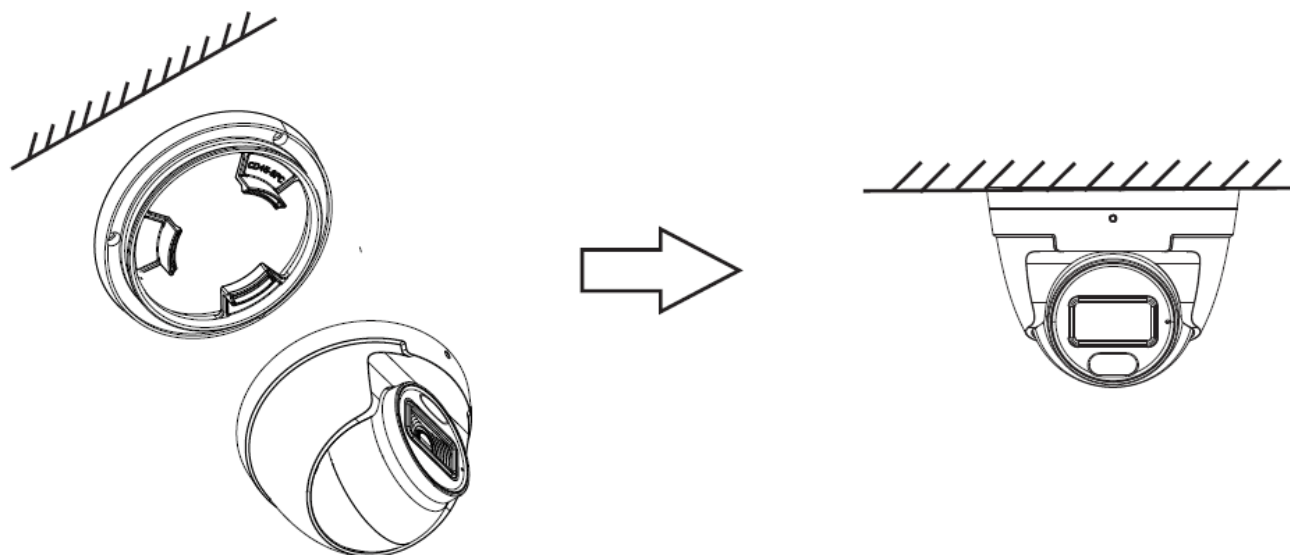
2. Loosen the fixed screw to disassemble the camera.



3. Route and connect the cables then secure the mounting base to the ceiling or wall with the screws provided.



4. Install the camera unit and enclosure to the mounting base and then adjust if necessary to obtain an optimum view angle. Finally, fasten the camera with the fixed screw.



Specifications

Models	H2AB2	H2AT2
Camera		
Image Sensor	1/2.8" CMOS	
Resolution	2MP	
Image size	1920×1080	
Video Output	AHD/TVI/CVI/CVBS (*camera comes defaulted to HD-TVI)	
Audio	1CH built-in microphone	
Image System	PAL/NTSC	
Electronic Shutter	Auto	
White Light Range (feet)	65~98	
Frame Rate	30fps(60Hz); 25fps(50Hz)	
Min. Illumination	0 lux (LED ON)	
Lens	2.8 mm	
Lens Mount	M12	
S/N Ratio	≥ 52dB(AGC OFF)	
Ingress Protection	IP67	
Functions		
Function Control	OSD (UTC control)	
Smart LED	Manual or auto mode	
WDR	Digital WDR	

Digital NR	Yes
AGC	Yes
Auto White Balance	Yes
HLC	Yes
BLC	Yes
Front Light Compensation	Yes
Defog	No
Contrast	Yes
Sharpness	Yes
Image Setting	Yes
Defect Correction	Auto
Others	
Power Supply	DC12V ($\pm 15\%$)
Power Consumption	LED OFF: < 1W; LED ON : < 4W
Working Environment	-22 °F ~ 122 °F, 10 % ~ 90 %(relative humidity)
Dimensions (inch)	6.52× 2.71× 2.71 $\Phi 3.72 \times 3.25$

Model: H2AT2/H2AB2

Federal Communications Commission (FCC) Statements



This device complies with Part 15 of the FCC Rules. Operation is subject to the following two conditions

1. This device may not cause harmful interference, and
2. This device must accept any interference received, including interference that may cause undesired operation.

FCC Responsible Party

Speco Technologies
200 New Highway
Amityville, NY 11701
www.specotech.com

Documents / Resources

  H2AB2/H2AT2 User Manual <small>Product of Speco Technologies Inc. All rights reserved. Speco Technologies is a registered trademark of Speco Technologies Inc. All other trademarks are the property of their respective owners.</small>	speco technologies USE44-2MP TE3 Analog Camera [pdf] User Manual USE44-2MP TE3, H2AB2, H2AT2, USE44-2MP TE3 Analog Camera, TE3 Analog Camera, Analog Camera, Camera
--	--

References

-  [Home | Speco Technologies](#)