

speco
technologies
SGBRIDGE1TB
Cloud Bridge
with
SecureGuard
Remote Web
Browser Access



speco technologies SGBRIDGE1TB Cloud Bridge with SecureGuard Remote Web Browser Access User Guide

[Home](#) » [speco technologies](#) » speco technologies SGBRIDGE1TB Cloud Bridge with SecureGuard Remote Web Browser Access User Guide 

Contents

- [1 speco technologies SGBRIDGE1TB Cloud Bridge with SecureGuard Remote Web Browser Access](#)
- [2 Discovering and Logging into SGBRIDGE](#)
- [3 Adding sites to SGBRIDGE](#)
- [4 Configuring Channels for Cloud Use](#)
- [5 Information for Adding SGBRIDGE to the Cloud](#)
- [6 Documents / Resources](#)
 - [6.1 References](#)
- [7 Related Posts](#)

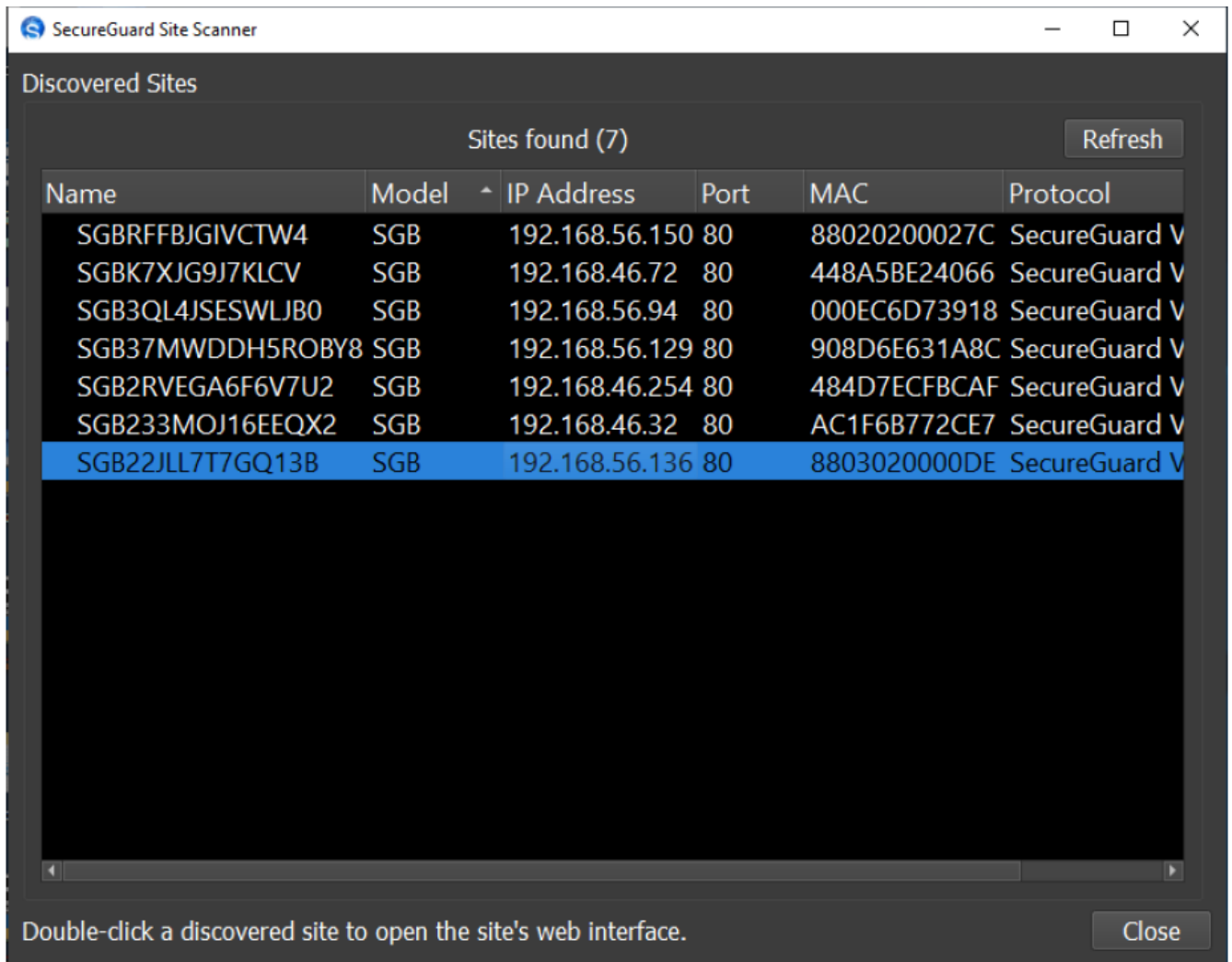


speco technologies SGBRIDGE1TB Cloud Bridge with SecureGuard Remote Web Browser Access

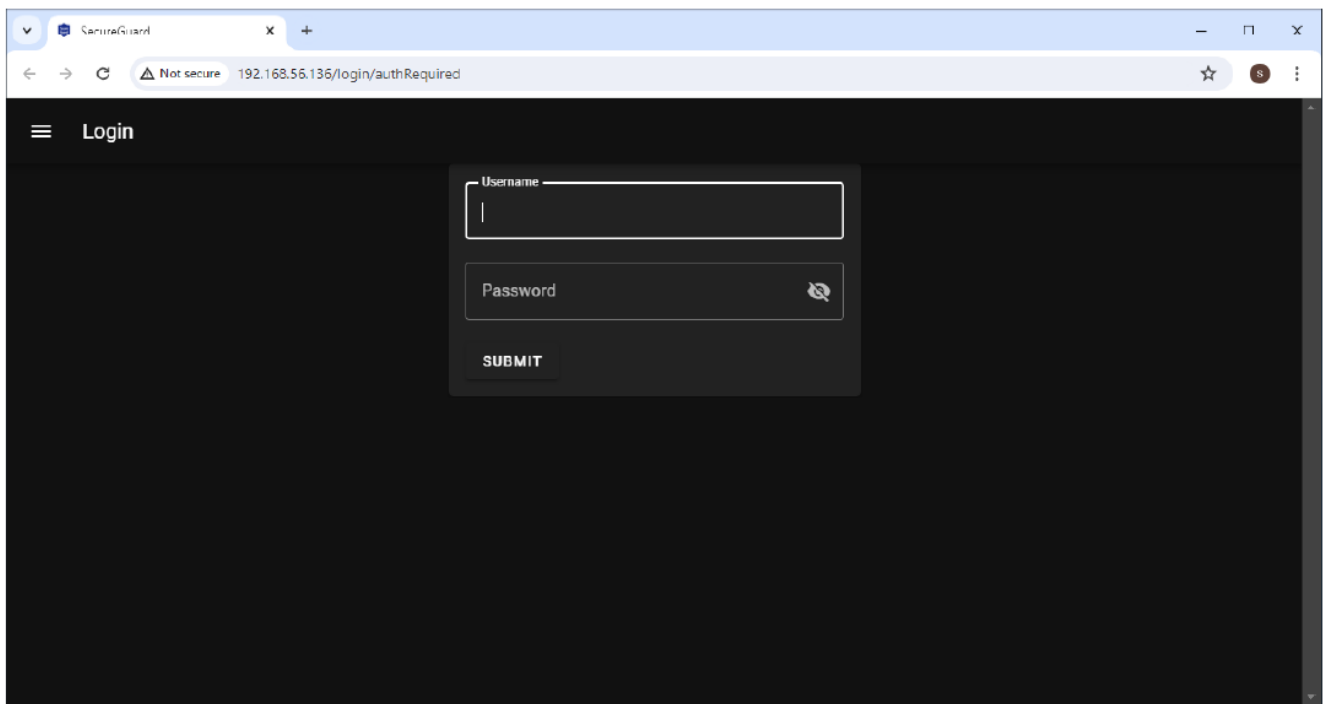


Discovering and Logging into SGBRIDGE

- Connect both power and a network connection with internet access to your SGBRIDGE*.
 - *The SGBRIDGE's network ports are configured to DHCP by default. If a static address is needed, you will need to connect a keyboard, mouse, and monitor to the bridge hardware.
- While the SGBRIDGE is booting, connect your laptop to the same network the SGBRIDGE is on.
- Download, install, and open the Speco Scanner application. This application will search for your SGBRIDGE. Double-click to access the web setup.

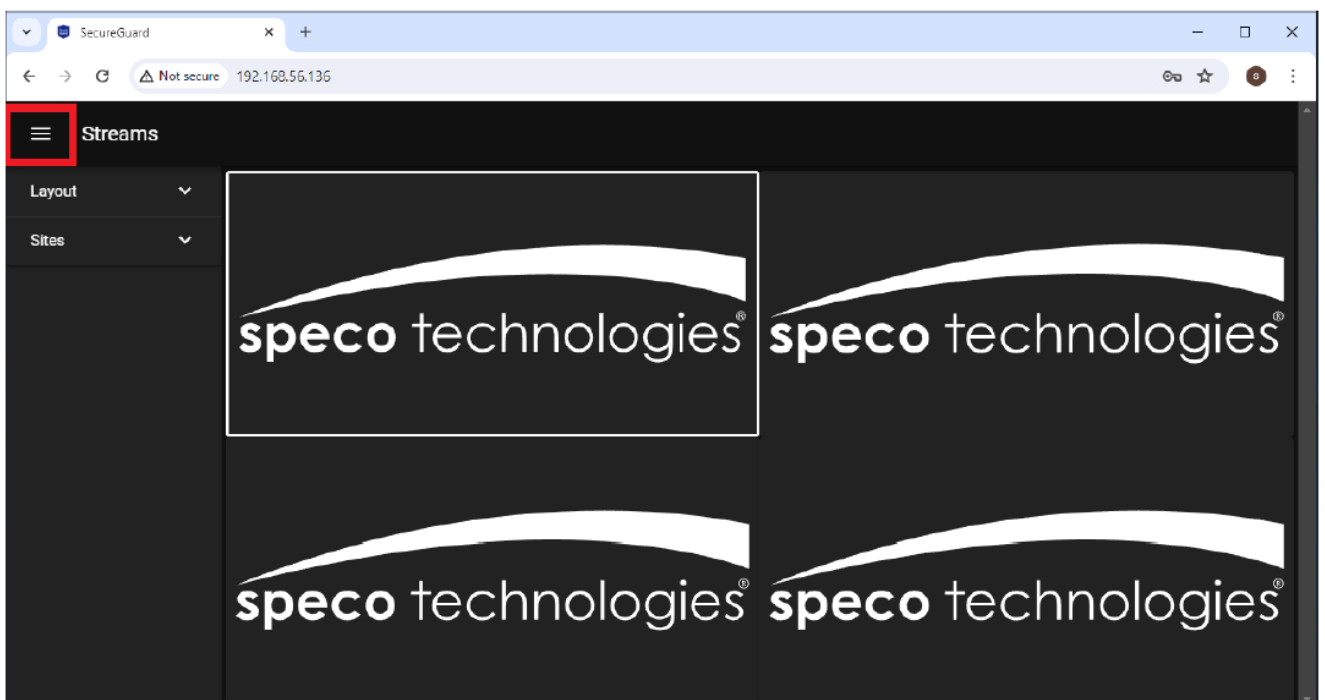


- Your default web browser will open a login screen. The default login credentials are:
 - **Username:** admin
 - **Password:** admin
- Click 'Submit' to proceed.



Adding sites to SGBRIDGE

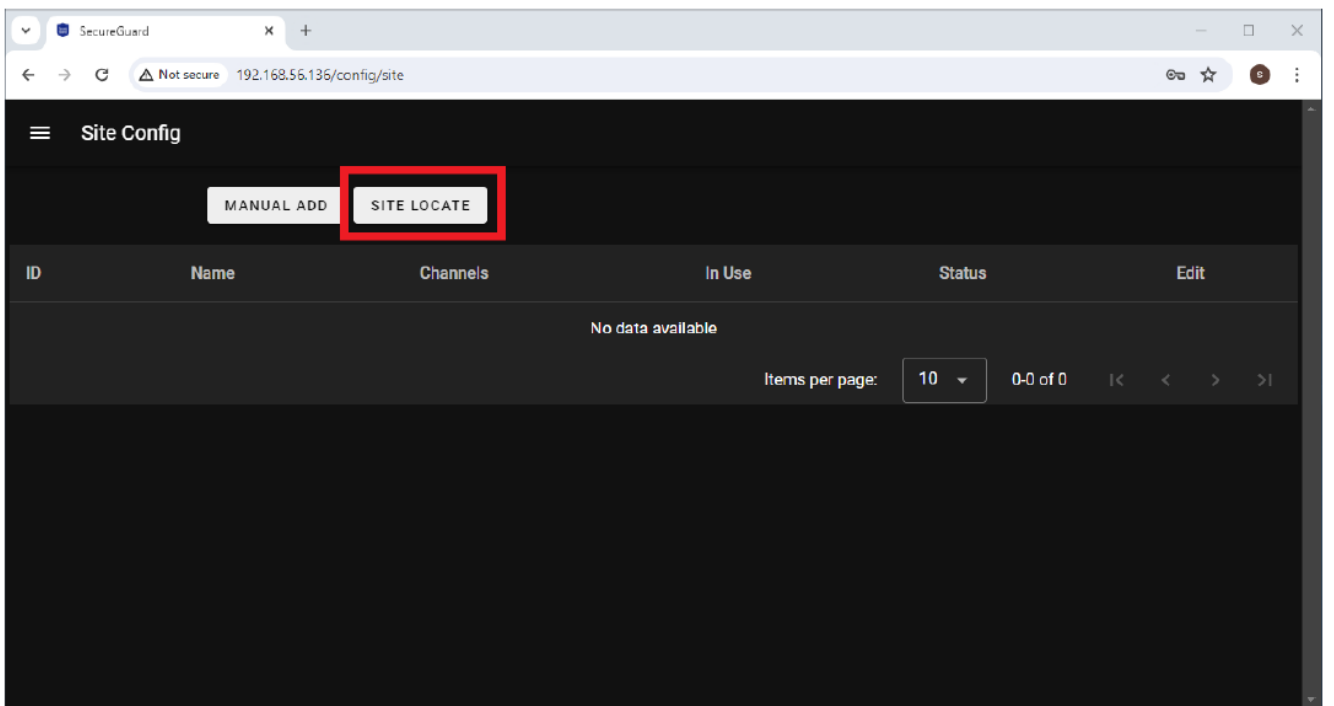
- After logging in, click the hamburger menu on the upper left corner of the interface.



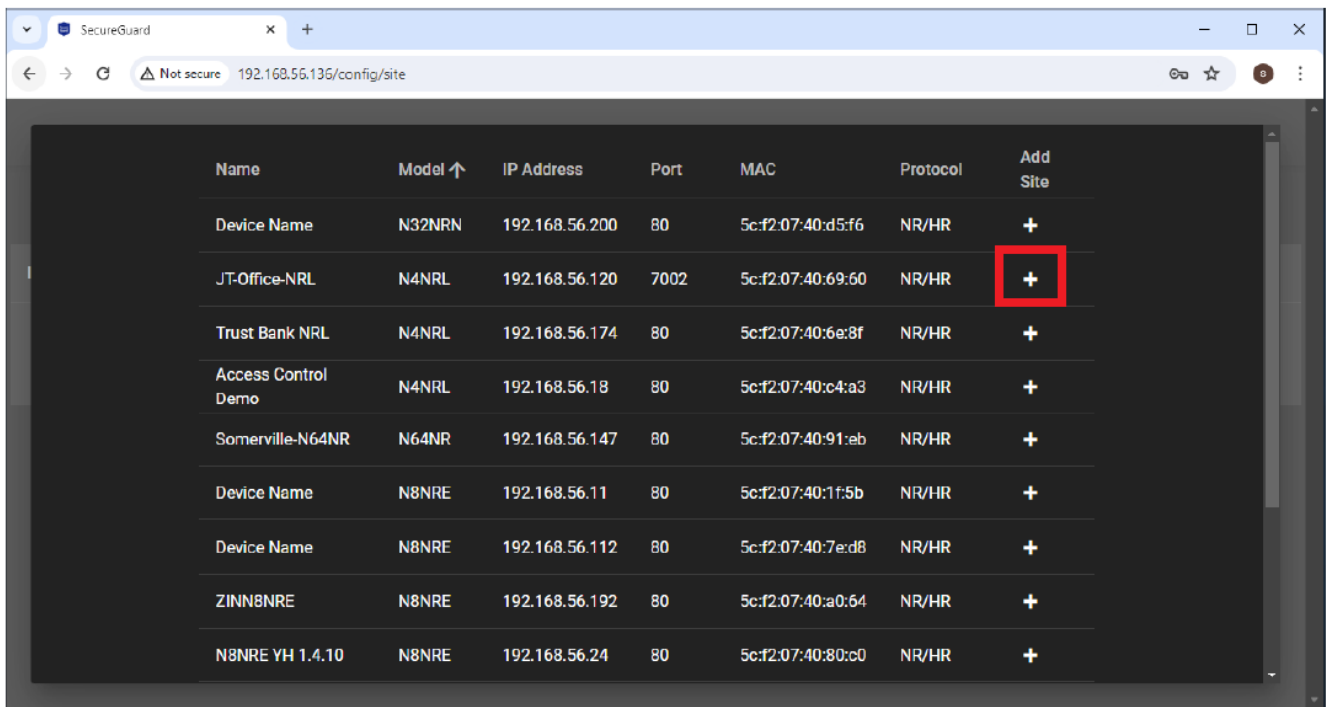
- Click 'Config'.



- Click 'Site Locate'

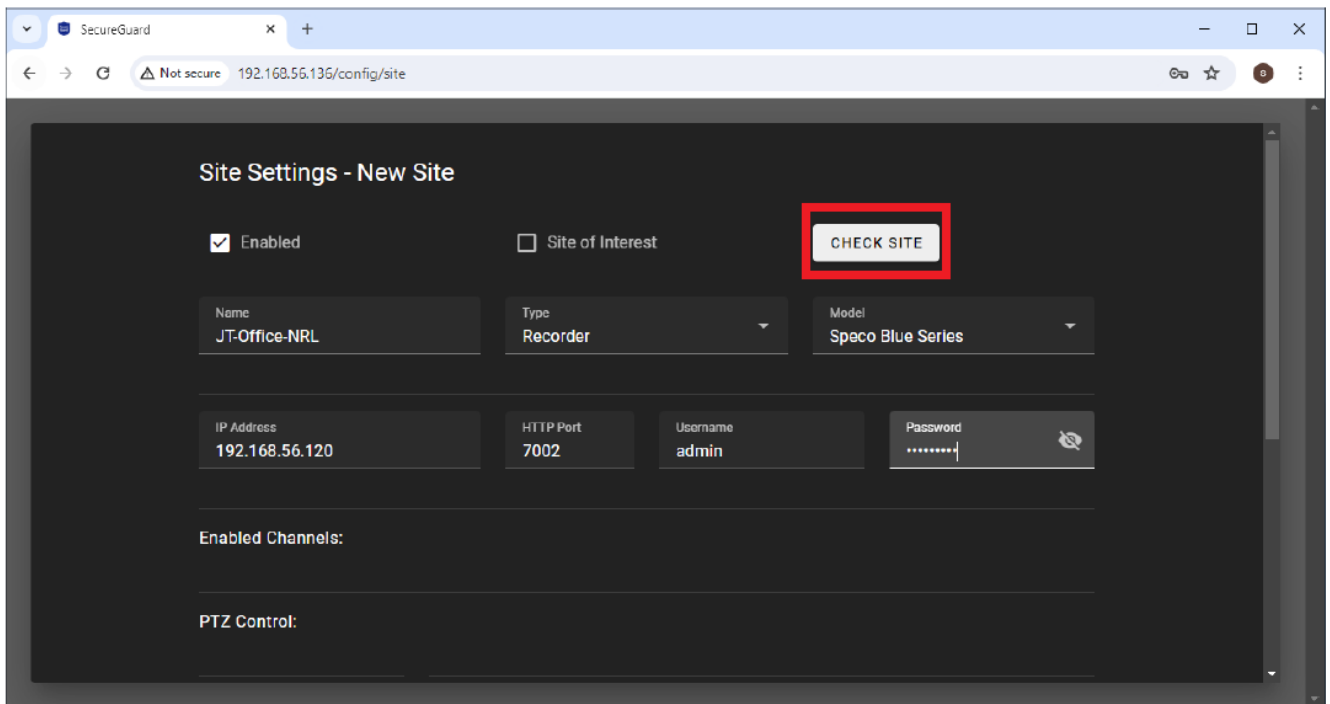


- Find the device(s) you'd like to add to your SGBRIDGE and click the '+' in their row.



Name	Model ↑	IP Address	Port	MAC	Protocol	Add Site
Device Name	N32NRN	192.168.56.200	80	5c:f2:07:40:d5:f6	NR/HR	+
JT-Office-NRL	N4NRL	192.168.56.120	7002	5c:f2:07:40:69:60	NR/HR	+
Trust Bank NRL	N4NRL	192.168.56.174	80	5c:f2:07:40:6e:8f	NR/HR	+
Access Control Demo	N4NRL	192.168.56.18	80	5c:f2:07:40:c4:a3	NR/HR	+
Somerville-N64NR	N64NR	192.168.56.147	80	5c:f2:07:40:91:eb	NR/HR	+
Device Name	N8NRE	192.168.56.11	80	5c:f2:07:40:1f:5b	NR/HR	+
Device Name	N8NRE	192.168.56.112	80	5c:f2:07:40:7e:d8	NR/HR	+
ZINN8NRE	N8NRE	192.168.56.192	80	5c:f2:07:40:a0:64	NR/HR	+
N8NRE YH 1.4.10	N8NRE	192.168.56.24	80	5c:f2:07:40:80:c0	NR/HR	+

- Enter the correct credentials of the device and click 'Check Site'



Site Settings - New Site

☒ Enabled
 ☐ Site of Interest
 CHECK SITE

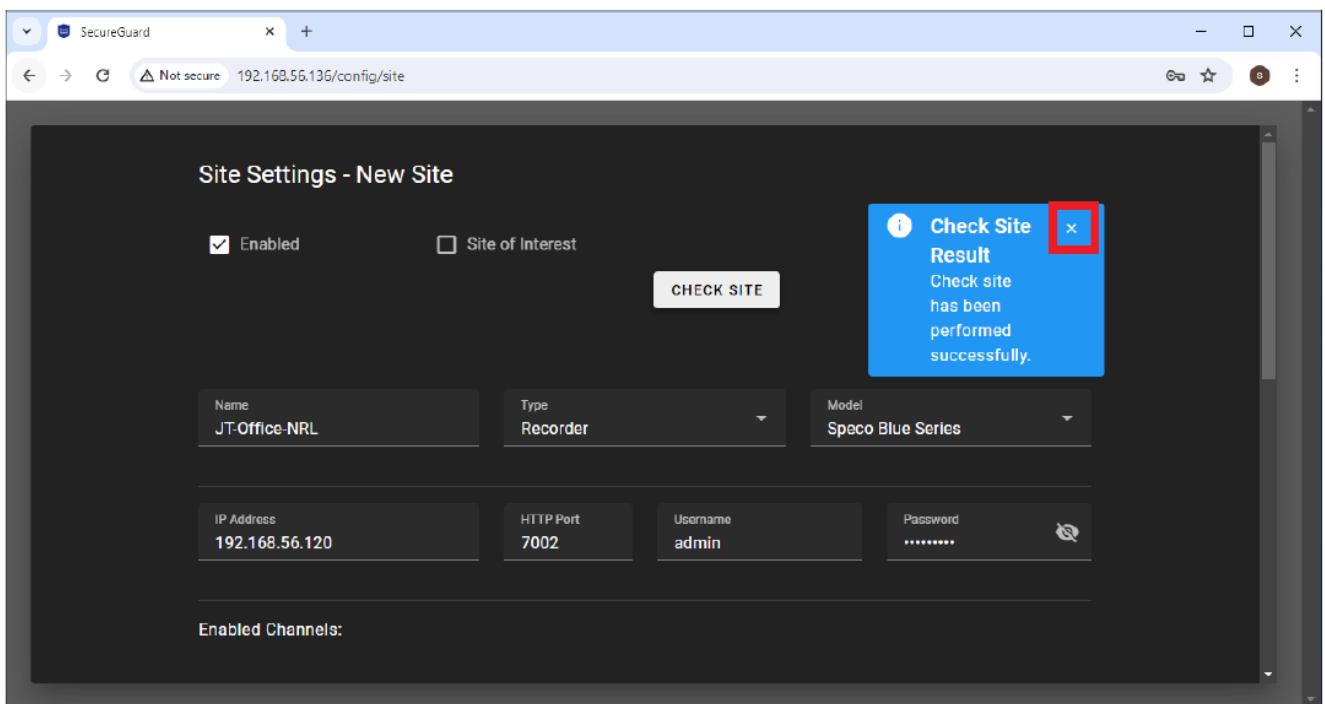
Name: JT-Office-NRL
 Type: Recorder
 Model: Spaco Blue Series

IP Address: 192.168.56.120
 HTTP Port: 7002
 Username: admin
 Password:

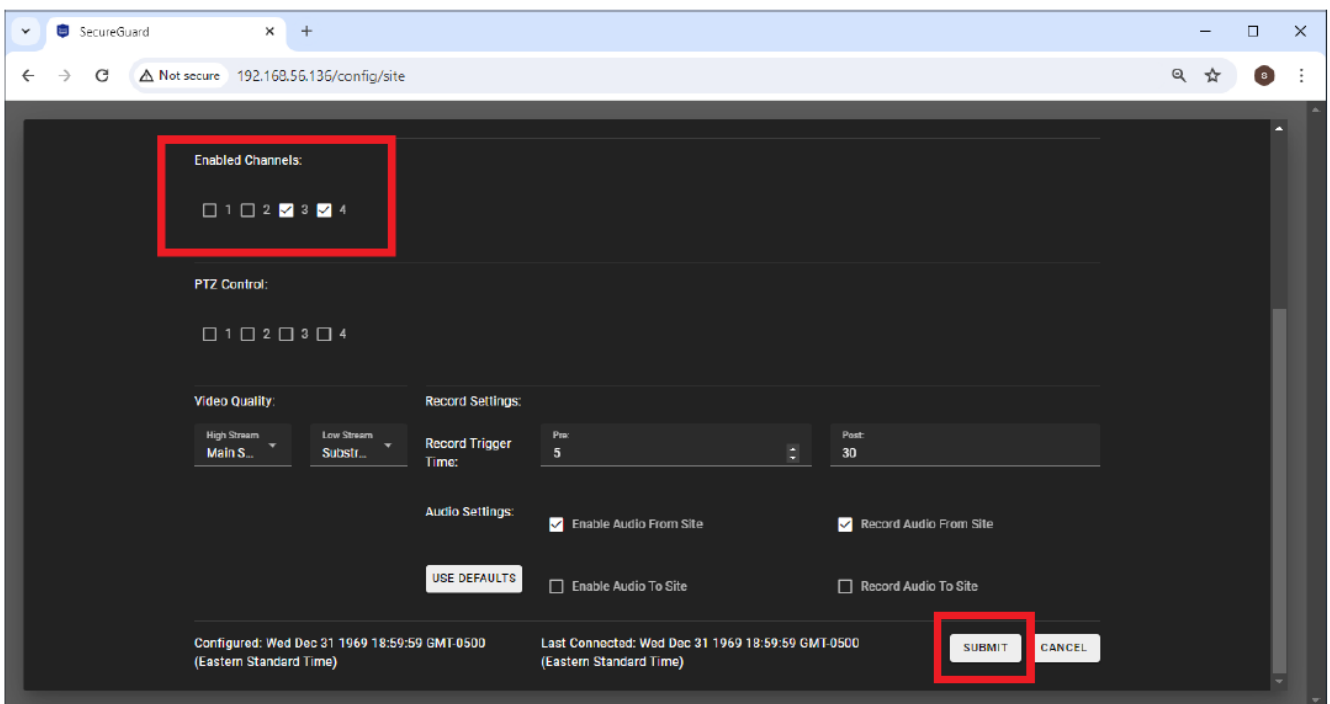
Enabled Channels:

PTZ Control:

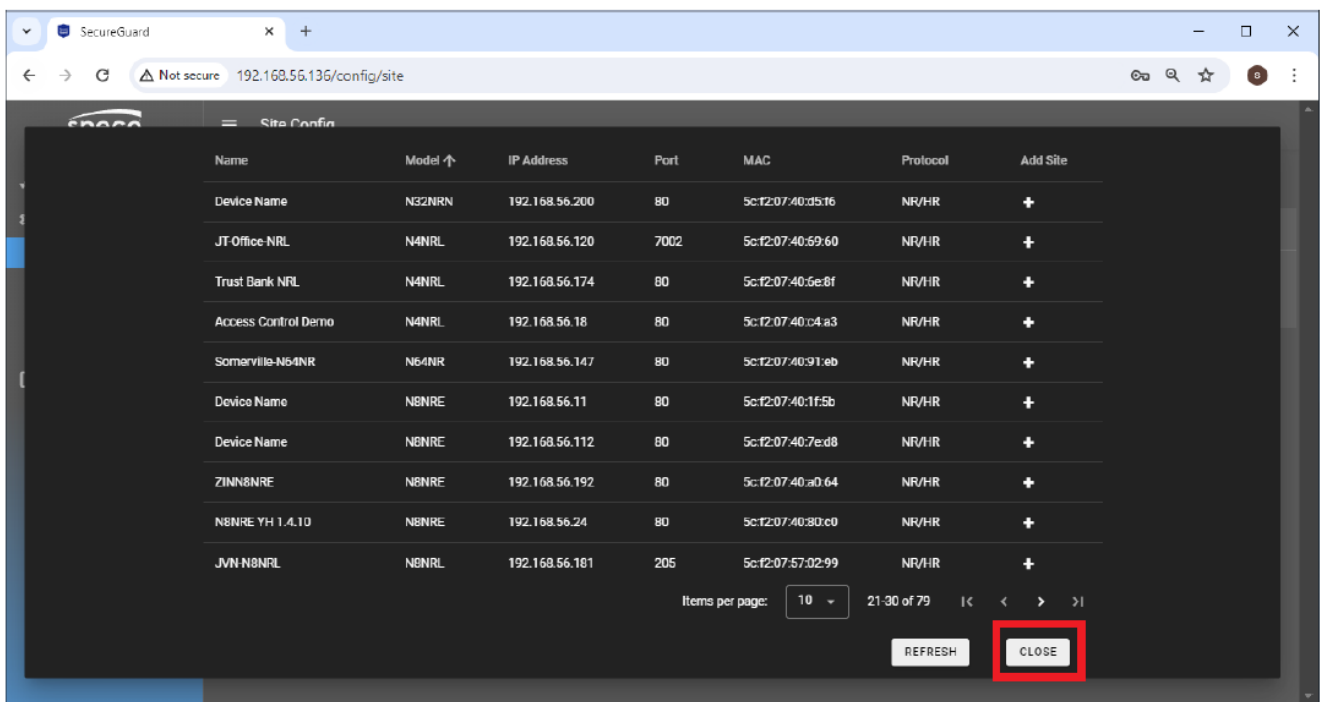
- If successful, a blue message will display stating the 'Check Site' was successful and channels have been received. Click the 'x' icon of the blue message.



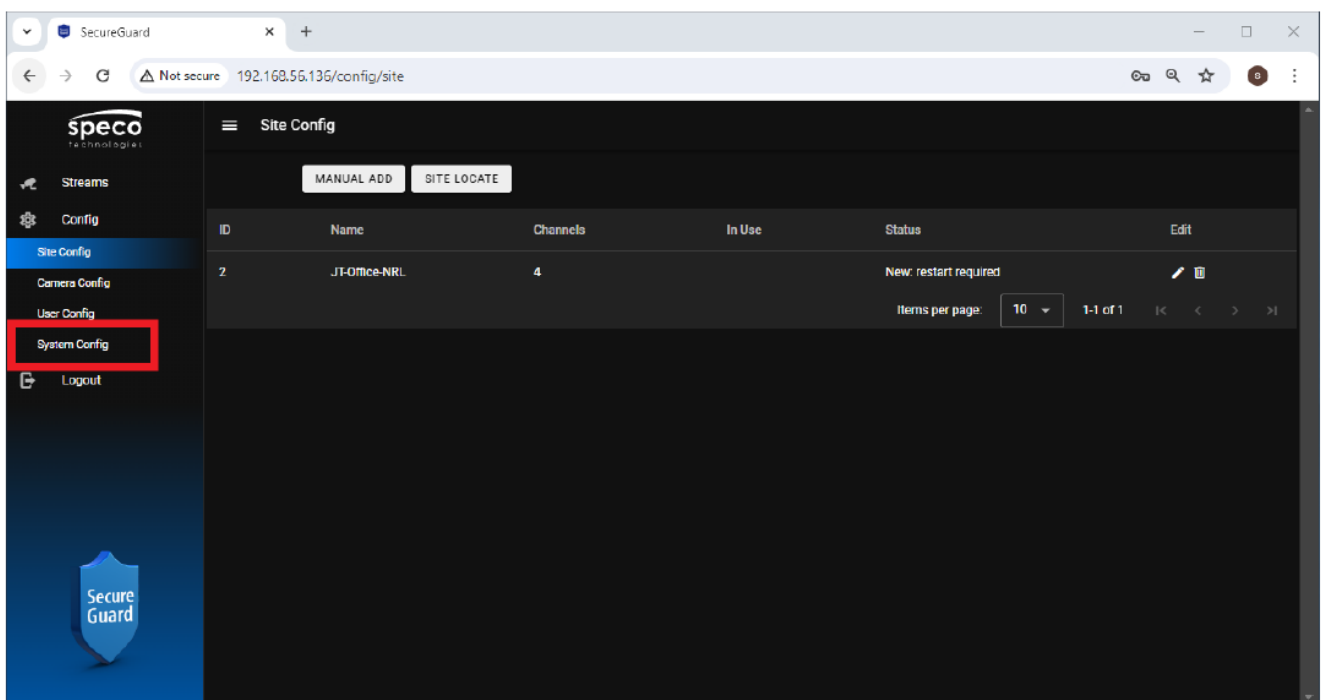
- For recorders, select the channels that you want to go to the cloud. Then click 'Submit'



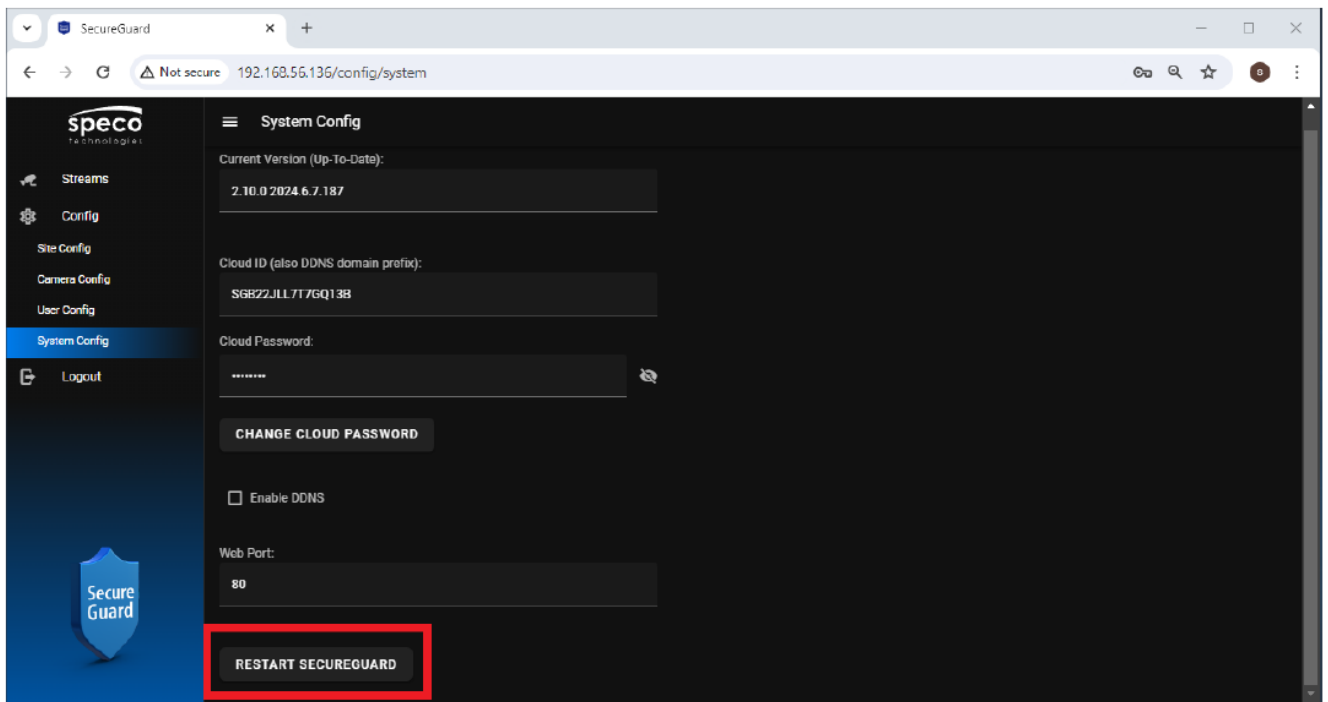
- Click 'Close' in the Site Locate interface.



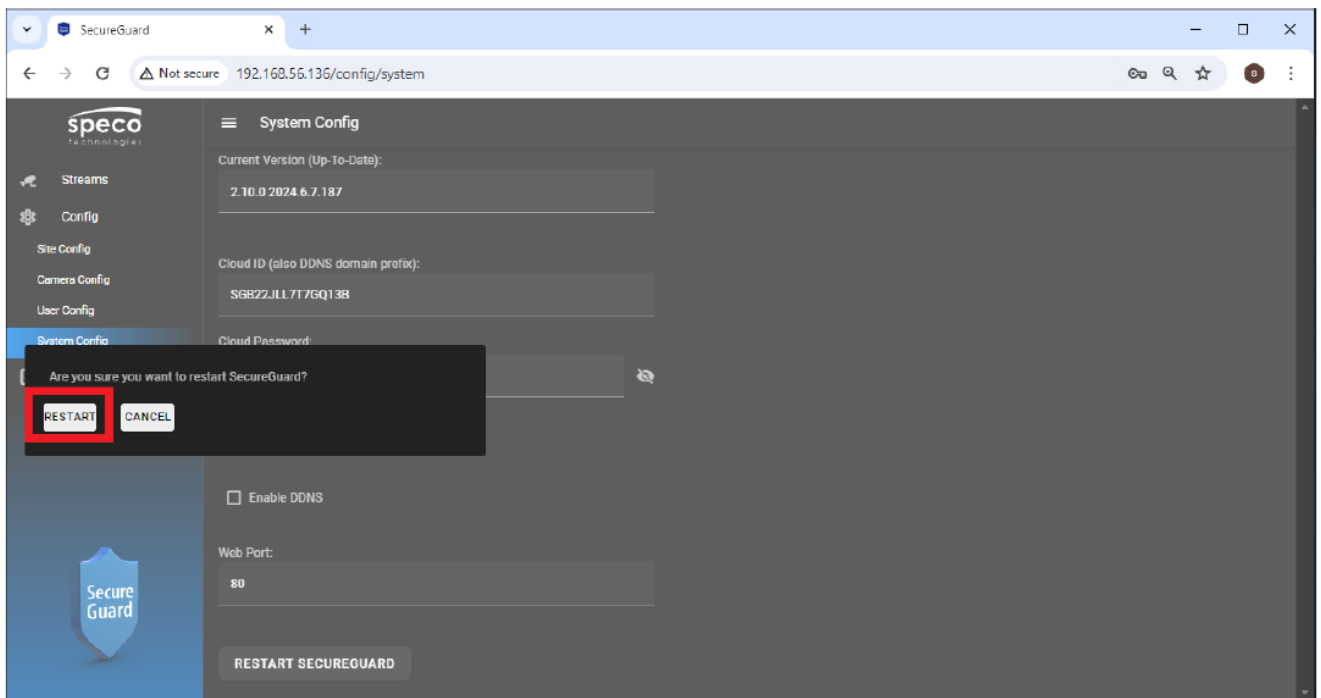
- You will then need to perform a restart for the device(s) to be added. Click 'System Config'.



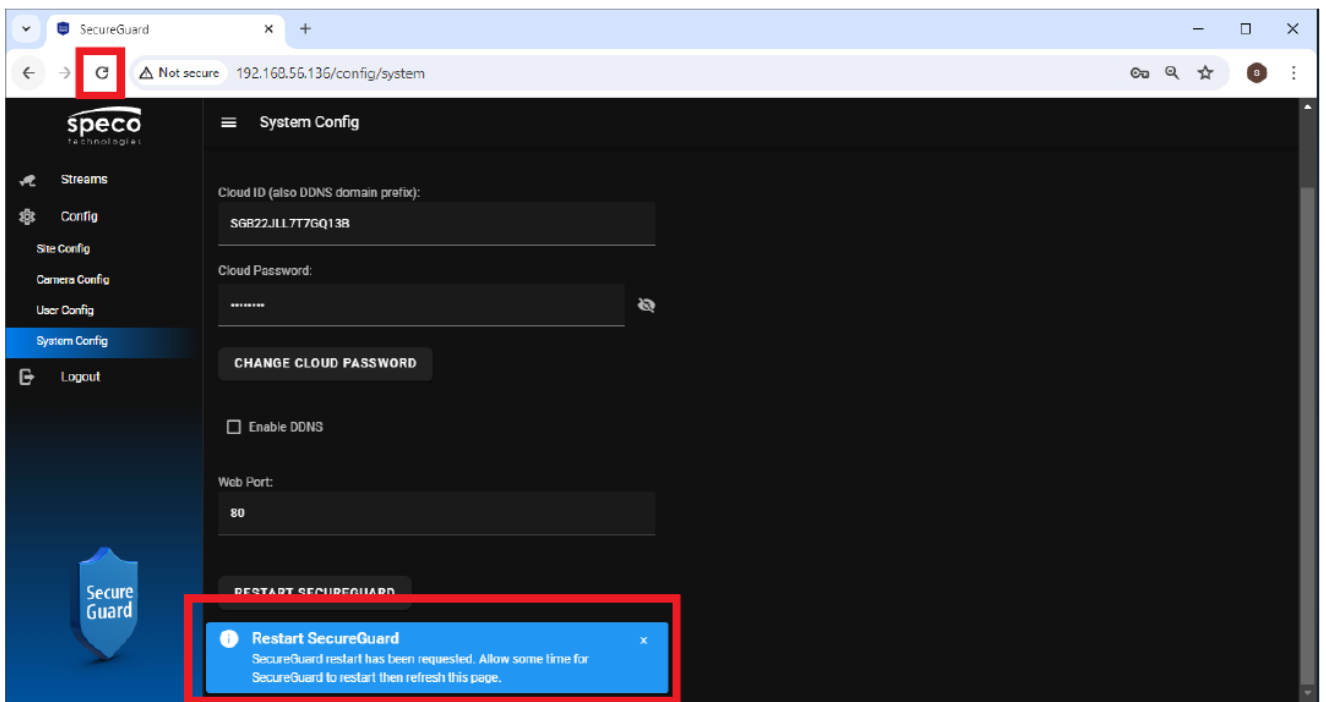
- Click 'Restart SecureGuard'



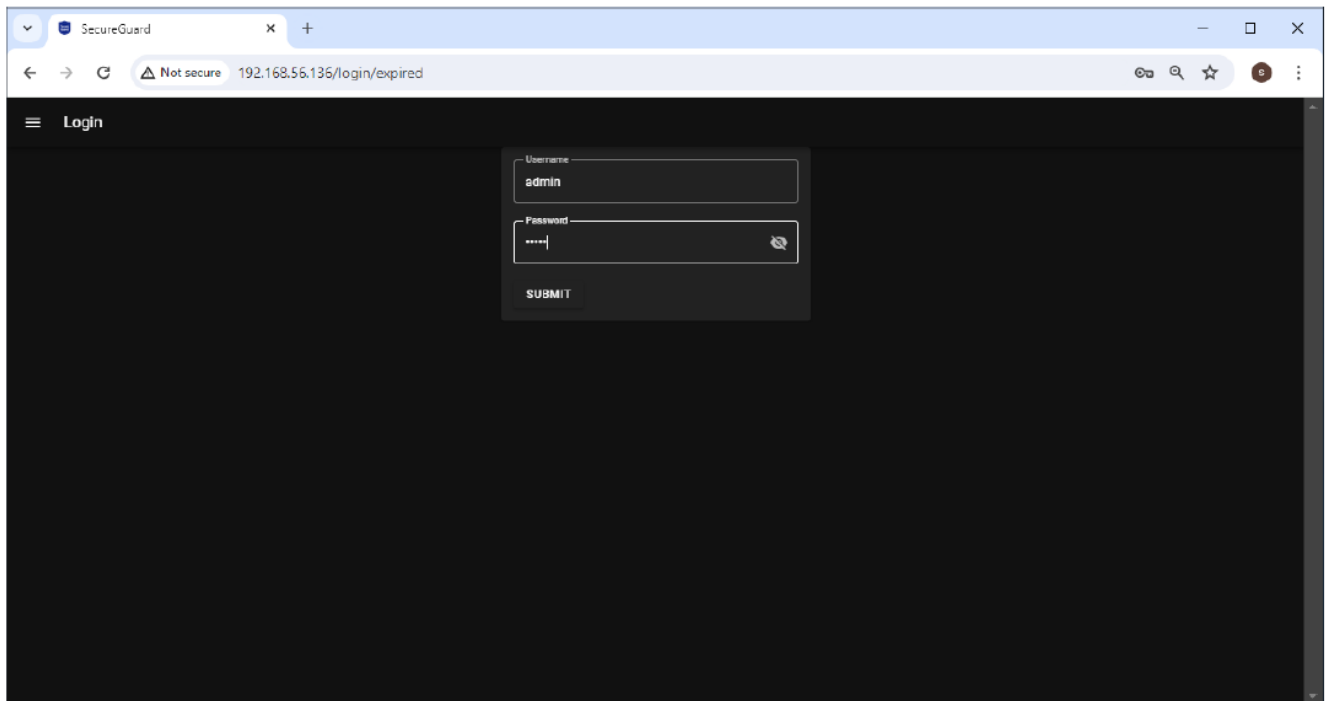
- Click 'Restart'.



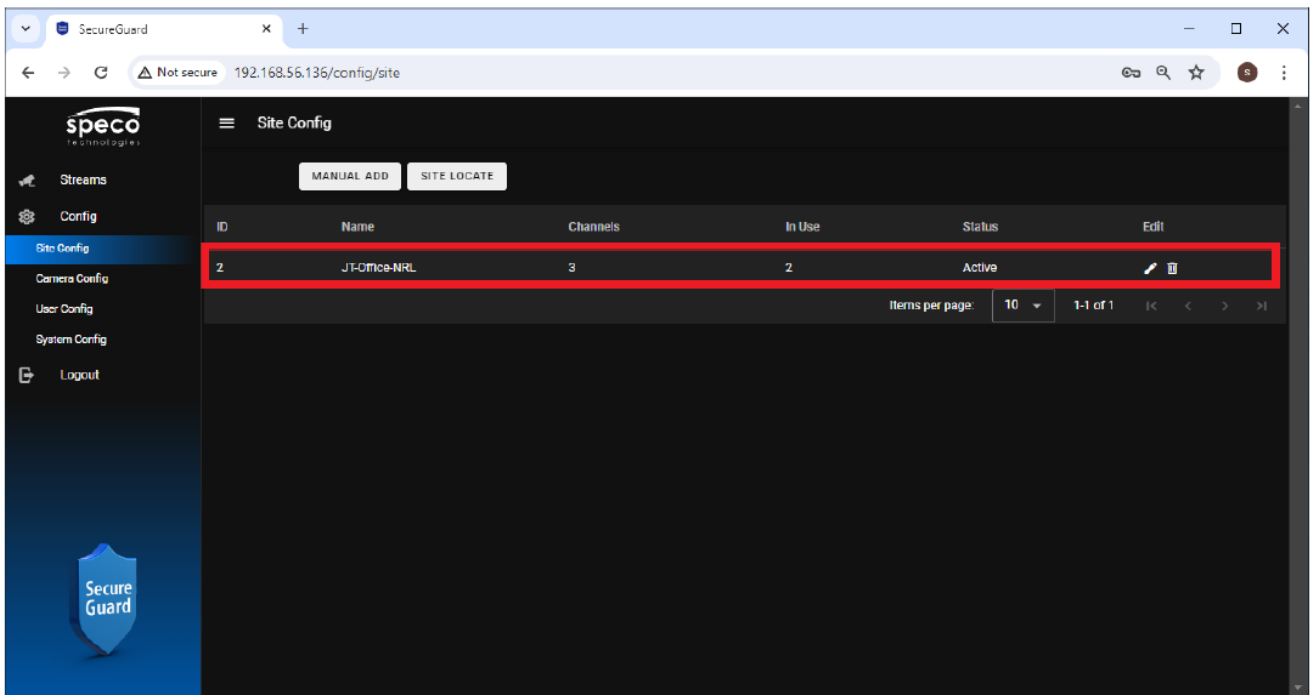
- You will be notified that SecureGuard will be restarted and that you'll need to refresh the web browser page. When you refresh, you'll have to log in again.



- Log into the web interface again.

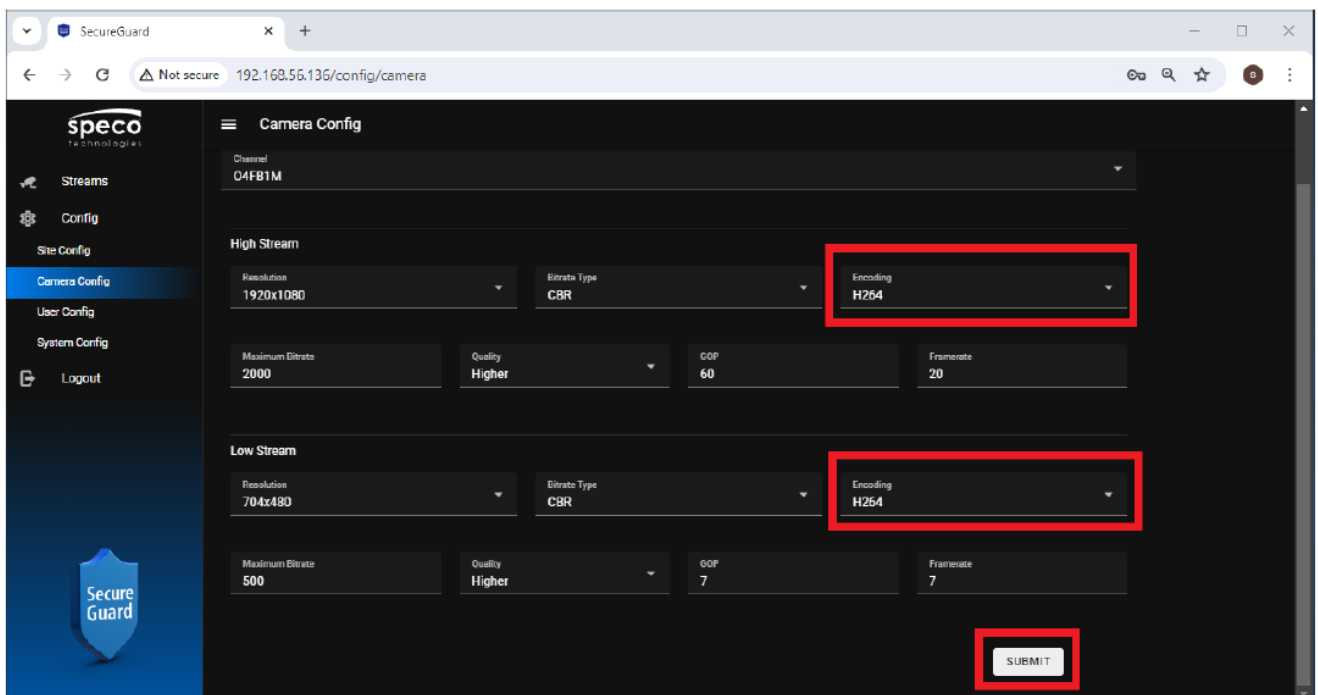


- Navigate to the Site Config interface and you'll see your recorder information.



Configuring Channels for Cloud Use

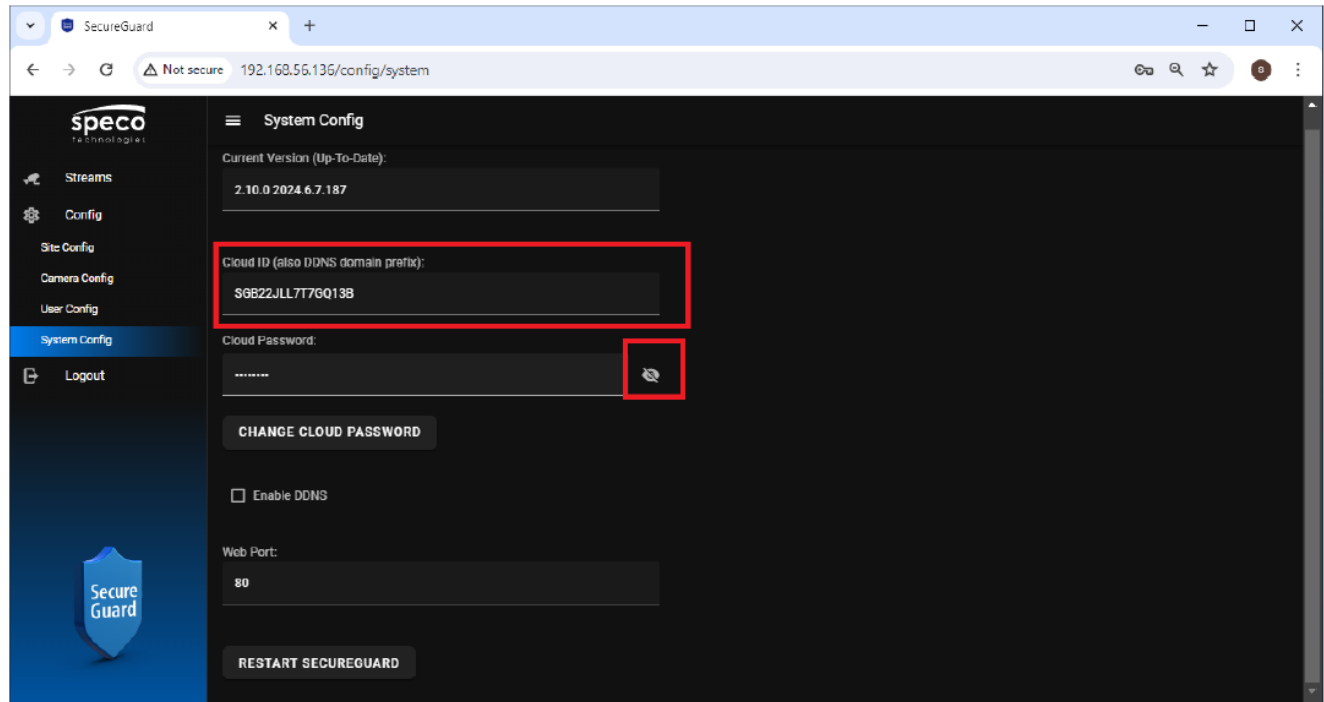
- In the web setup, go to 'Camera Config'. It will take a few seconds for the parameters to come through. Once displayed, ensure that both main and substream 'Encoding' settings are H.264. Configure Resolution, Frame Rate, and Bit-Rate accordingly.
- Once completed entering the parameters, click 'Submit'.




Information for Adding SGBRIDGE to the Cloud

- Once you've completed your camera configuration, click 'System Config' and note the Cloud ID and Cloud Password. You can see the Cloud Password by clicking the eyeball icon.
- You can open another tab for the Cloud Portal setup so that you can copy and paste the Cloud information.
- Please view the Partner Portal Quick Setup Guide to learn how to add and set up an SGBRIDGE for a

customer.



Documents / Resources

 <small>Quick Setup Guide for SGBRIDGE Securing and Configuring SGBRIDGE for Cloud</small>	<p>speco technologies SGBRIDGE1TB Cloud Bridge with SecureGuard Remote Web Browser Access [pdf] User Guide</p> <p>SGBRIDGE1TB Cloud Bridge with SecureGuard Remote Web Browser Access, SGBRIDGE1T B, Cloud Bridge with SecureGuard Remote Web Browser Access, SecureGuard Remote Web B rowser Access, Remote Web Browser Access, Web Browser Access, Browser Access</p>
---	---

References

- [User Manual](#)

[Manuals+](#), [Privacy Policy](#)

This website is an independent publication and is neither affiliated with nor endorsed by any of the trademark owners. The "Bluetooth®" word mark and logos are registered trademarks owned by Bluetooth SIG, Inc. The "Wi-Fi®" word mark and logos are registered trademarks owned by the Wi-Fi Alliance. Any use of these marks on this website does not imply any affiliation with or endorsement.