



speco technologies O4VD2 Network Security Camera User Guide

[Home](#) » [speco technologies](#) » speco technologies O4VD2 Network Security Camera User Guide 

speco technologies O4VD2 Network Security Camera



Contents

- [1 Welcome](#)
- [2 Important Safeguards and Warning](#)
- [3 Warning](#)
 - [3.1 Statement](#)
- [4 Package](#)
- [5 Overview](#)
- [6 Connecting Network Cable](#)
- [7 Installation](#)
- [8 Web Operation and Login](#)
- [9 Documents / Resources](#)
 - [9.1 References](#)
- [10 Related Posts](#)

Welcome

Thank you for purchasing this network camera! This owner's manual is designed to be a reference tool for your system.

Please read this manual carefully before operating the unit and retain it for future reference.

Should you require any technical assistance, contact Speco Technologies Tech Support at 1-800-645-5516

Important Safeguards and Warning

Electrical safety

All installation and operation here should conform to local electrical safety codes.

Use a certified/listed 12VDC Class 2 power supply only.

Please note: Do not connect two power supplying sources to the device at the same time; it may result in device damage! The product must be grounded to reduce the risk of electric shock. Improper handling and/or installation could run the risk of fire or electrical shock.

Environment

Do not expose the unit to heavy stress, violent vibration or long-term exposure to water and humidity during transportation, storage, and/or installation.

Do not install near sources of heat.

Only install the product in environments inside the specification operating temperature and humidity range.

Do not install the camera near power lines, radar equipment or other electromagnetic radiation.

Do not block any ventilation openings if any.

Use all the weatherproofing hardware requirement to minimize weather intrusion.

Operation and Daily Maintenance

Please shut down the device and then unplug the power cable before you begin any maintenance work.

Do not touch the CMOS sensor optic component. You can use a blower to clean the dust on the lens surface.

Always use the dry soft cloth to clean the device. If there is too much dust, use a cloth he device.

Please use a professional optical cleaning method to clean the enclosure. Improper enclosure cleaning (such as using cloth) may result in poor IR functionality and/or IR reflection.

The grounding holes of the product are recommended to be grounded to further enhance the reliability of the camera.

Dome cover is an optical device, please don't touch or wipe cover surface directly during installation and use, please refer to the following methods if dirt is found:

Stained with dirt: Use oil-free soft brush or hair dryer to remove it gently.

Stained with grease or fingerprint: Use oil-free cotton cloth or paper soaked with alcohol or detergent to wipe from the lens center outward. Change the cloth and wipe several times if it is not clean enough.

Warning

This camera should be installed by qualified personnel only.

All the examination and repair work should be done by qualified personnel.

Any unauthorized changes or modifications could void the warranty.

Statement

This guide is for reference only.

Product, manuals and specifications may be modified without prior notice. Speco Technologies reserves the right to modify these without notice and without incurring any obligation.

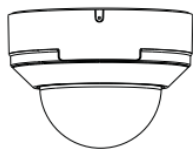
Speco Technologies is not liable for any loss caused by improper operation.

Note:

Before installation, check the package and make sure that all components are included.

Contact your rep or Speco customer service department immediately if something is broken or missing in the package.

Package



Camera



Quick start guide



CD



4 Plastic screw anchors



4 Screws (PA 4×25mm)



Rubber plug

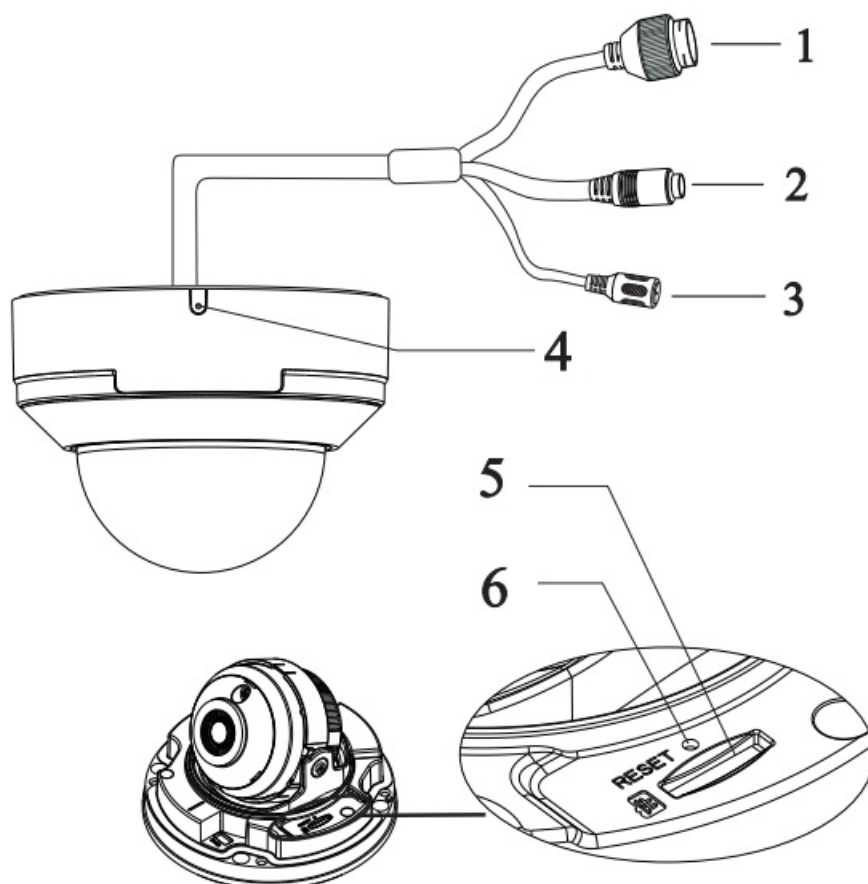


Screwdriver



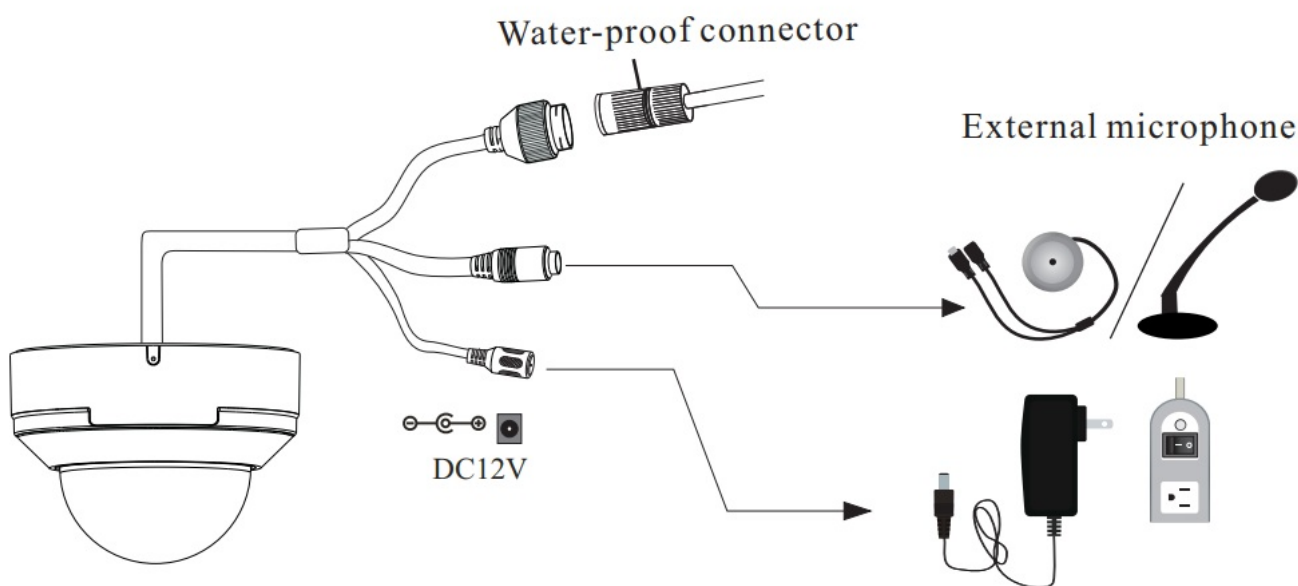
Drill template

Overview



1. Ethernet connector
2. Audio input connector
3. Power connector
4. Microphone

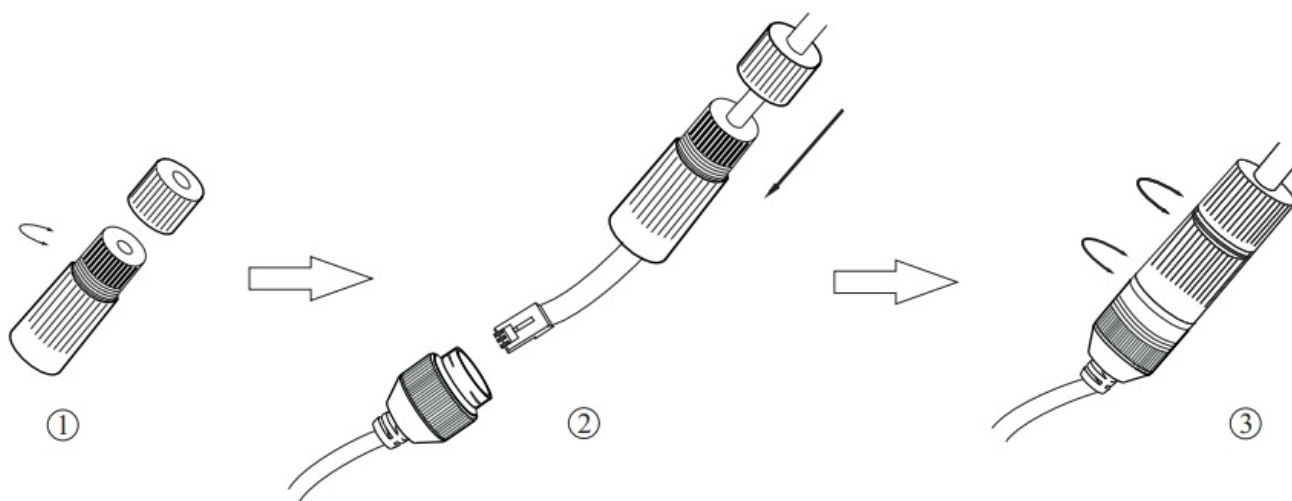
5. Micro SD Card Slot
6. Reset



1. It is recommended to install the water-proof connector for outdoor installations.
2. DC 12V power supply is not required if a PoE switch or injector is used to power the camera.

Connecting Network Cable

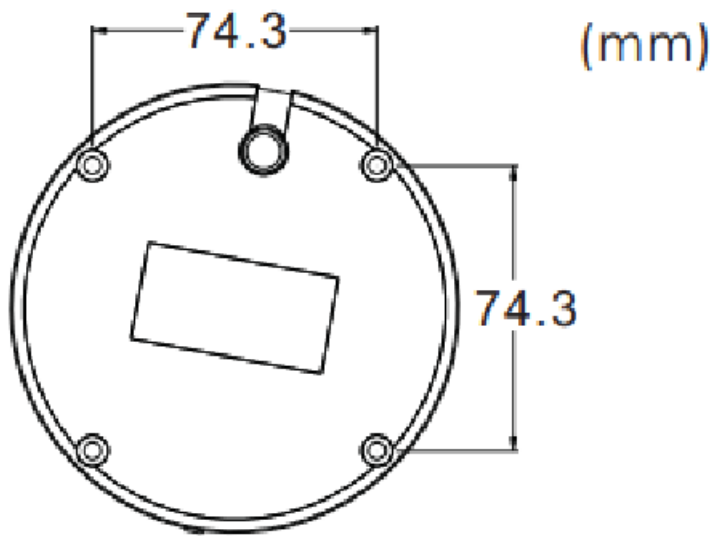
- ① Loosen the nut from the main element.
- ② Run the network cable (without RJ 45 connector) through both elements. Then crimp the cable with RJ 45 connector.
- ③ Connect the cable to the water-proof connector. Then tighten the nut and the main cover.



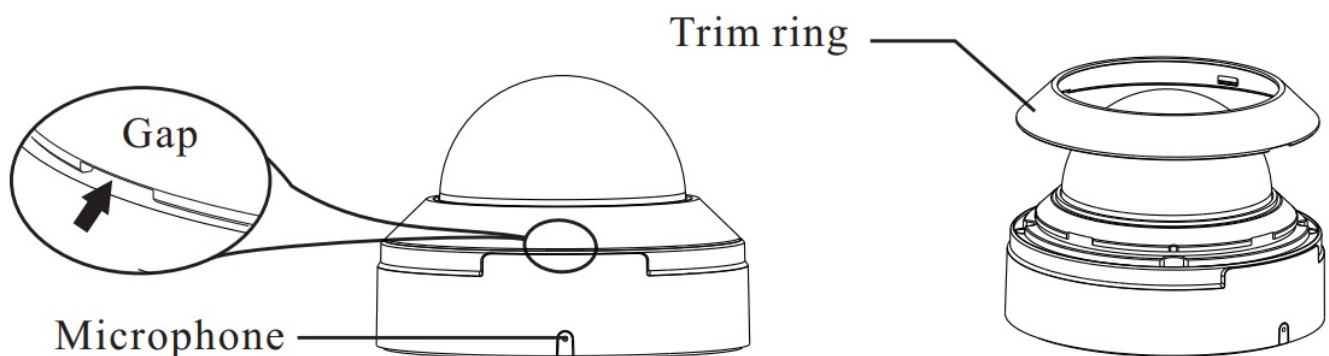
Installation

- Before you start, please make sure that the wall or ceiling is strong enough to withstand three times the weight of the camera.

① Attach the drill template to the place where you want to fix the camera and then drill the screw holes and the cable hole on the wall according to the drill template.



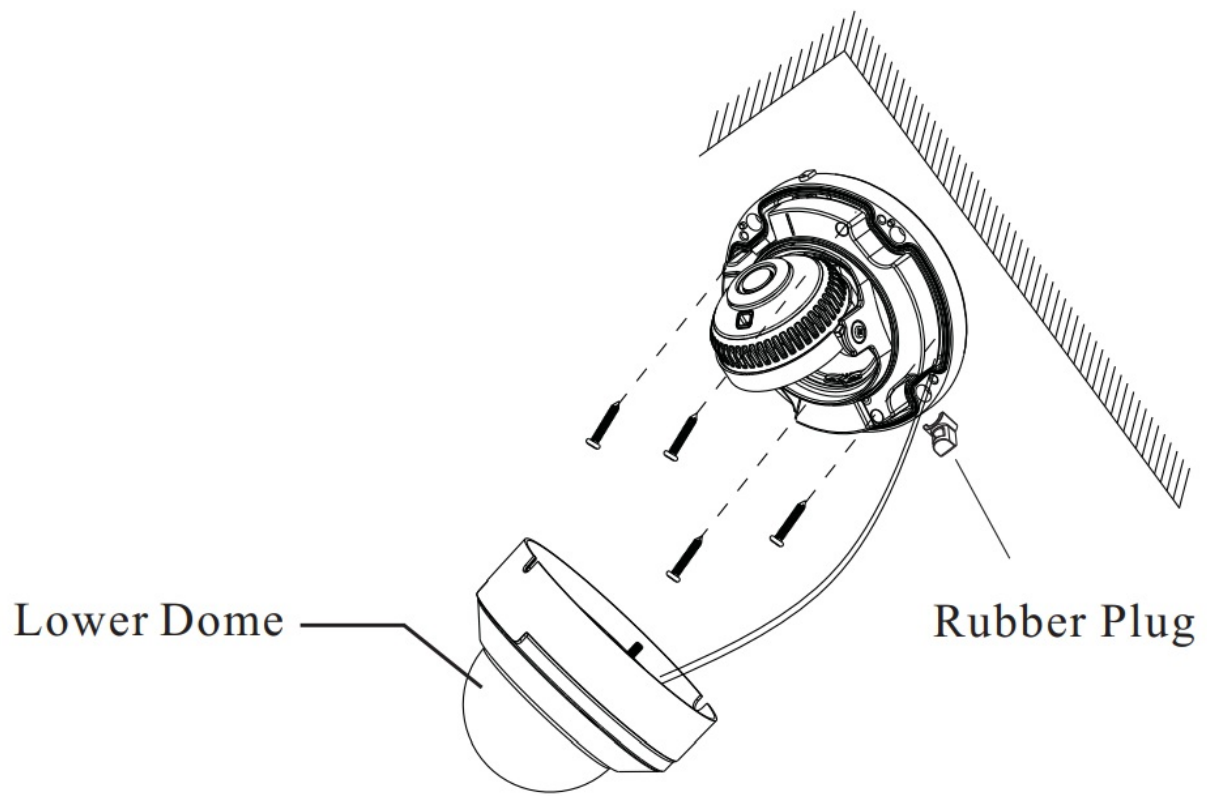
② Align the gap of the trim ring with the microphone by turning the trim ring with fingers. Then remove the trim ring from the gap of the camera.



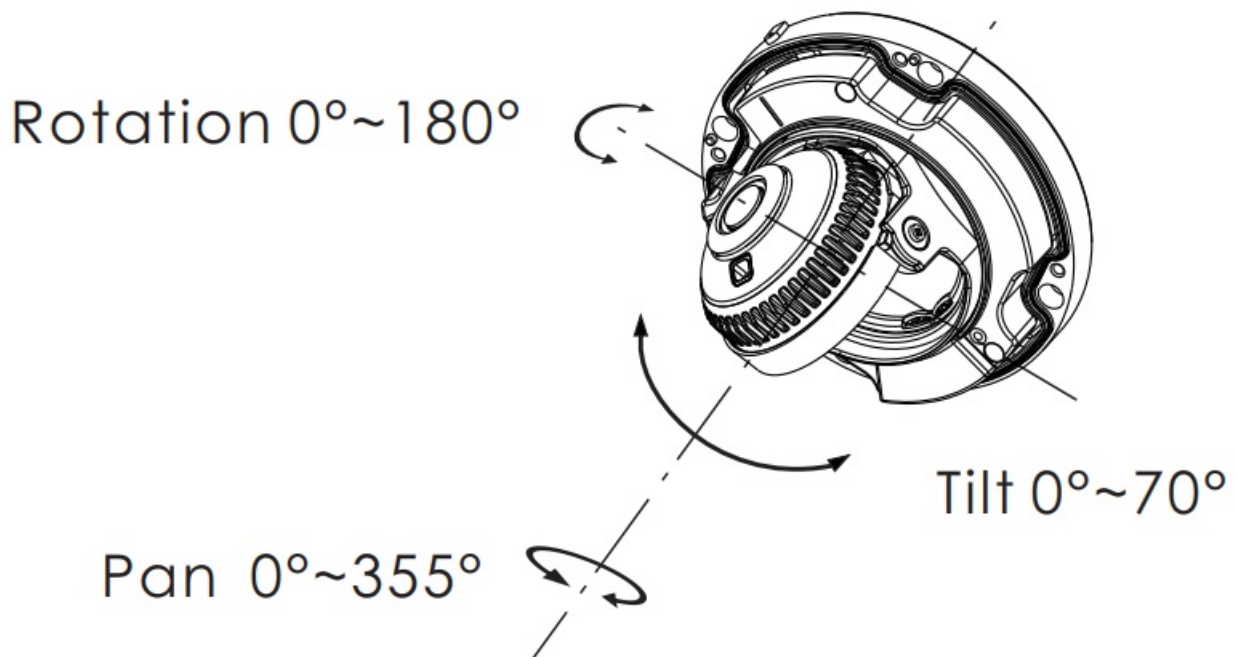
③ Loosen the screws to open the lower dome.

④ Route and connect the cables.

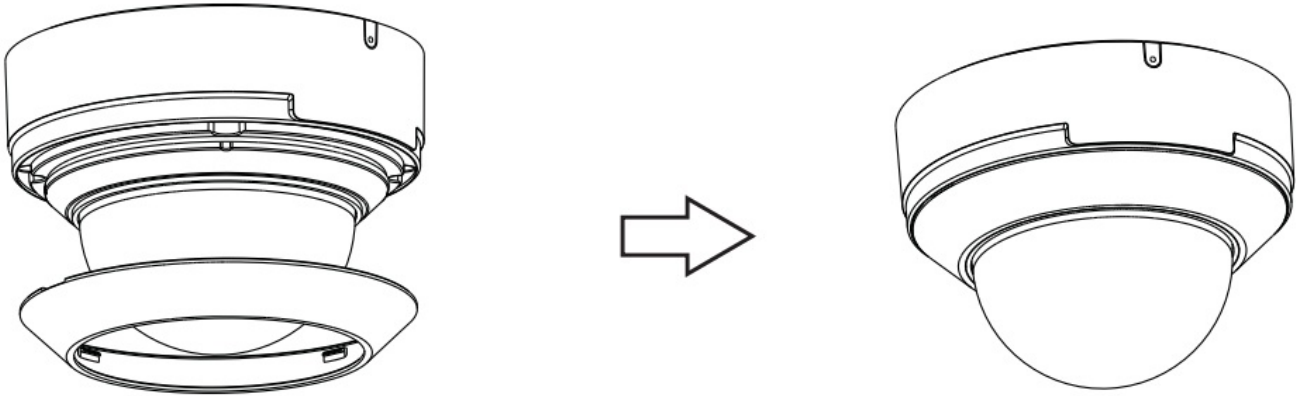
⑤ Mount the rubber plug to the gap of the mounting base and then secure the camera to the wall with screws provided as shown below.



⑥ Three-axis adjustment. Before adjustment, view the image of the camera on a monitor and then adjust the camera according to the figure below to get an optimum angle.



⑦ Install the lower dome back to the camera and fasten it with the screws.
Then put the trim ring onto the lower dome. Finally, remove the protection film softly.

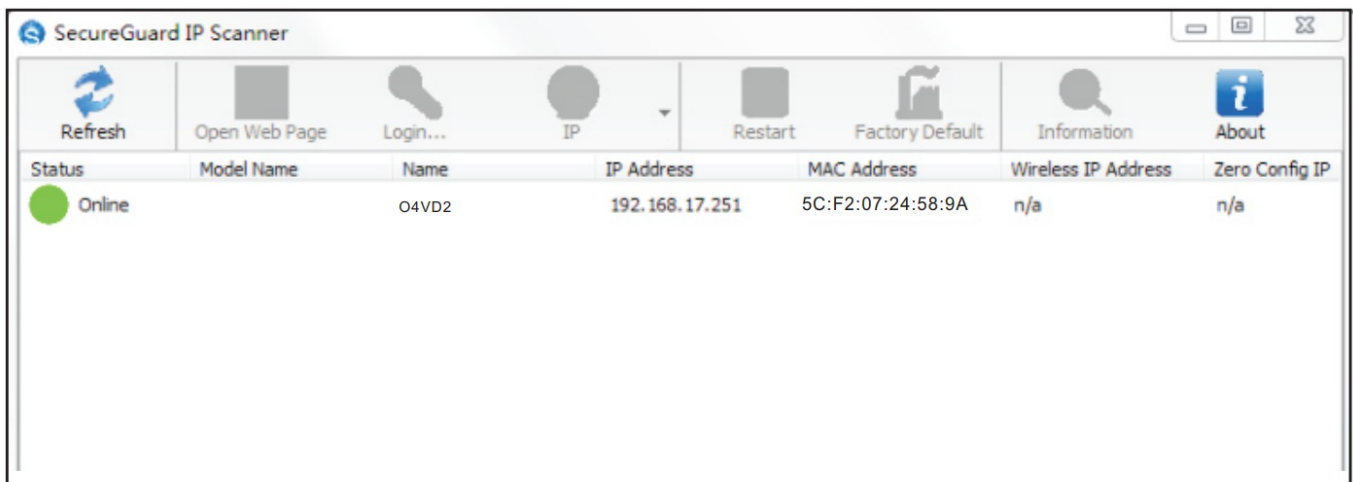


Web Operation and Login

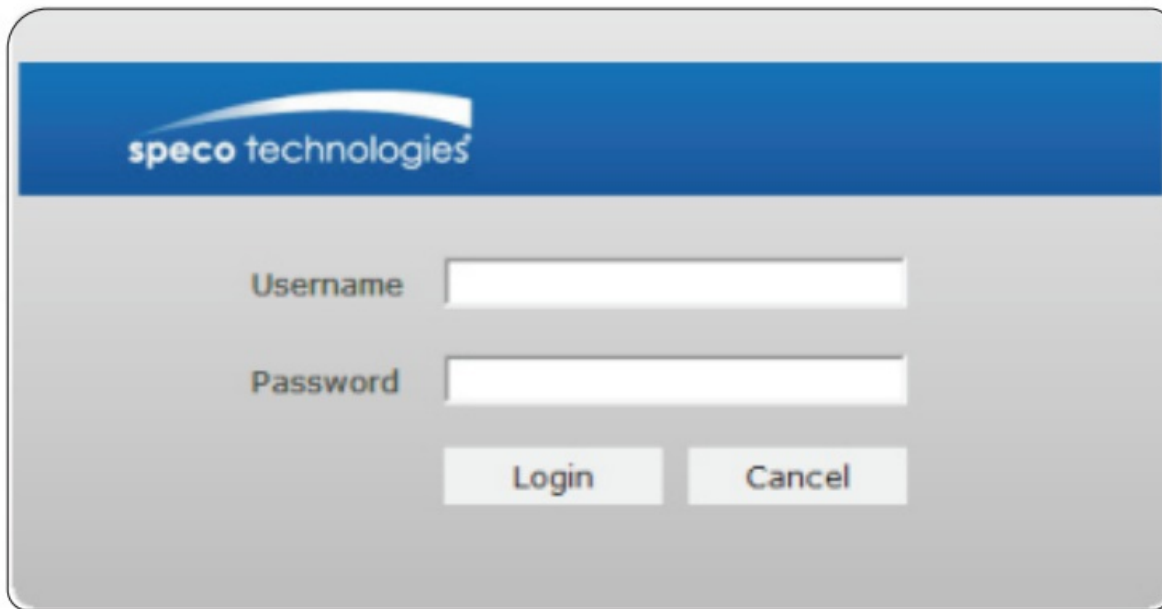
IP Scanner can search for the device on the local network.

Operation

- ① Make sure that the camera and the PC are connected to the same local network. The camera is set to DHCP by default.
- ② Install IP Scanner from the CD and run it after installation. Or download from <https://www.specotech.com/ip-scanner/>




- ③ In the device list, you can view the IP address, model number, and MAC address of each device. Select the applicable device and double click to open up the web viewer. You can also manually enter the IP address in the address bar of the web browser.

The image shows a login window for Speco Technologies. It has a blue header bar with the 'speco technologies' logo. Below the header, there are two input fields: 'Username' and 'Password'. At the bottom, there are two buttons: 'Login' and 'Cancel'.

The login interface is shown above. Default user name is admin and password is 1234. After logging in, follow directions to install applicable plugins if prompted.



Documents / Resources

| | |
|--|---|
|  The image shows a small icon for the 'speco technologies Quick Start Guide O4VD2'. It includes the Speco Technologies logo, the text 'Quick Start Guide O4VD2', and a small image of a white dome security camera. | <p>speco technologies O4VD2 Network Security Camera [pdf] User Guide O4VD2 Network Security Camera, O4VD2, Network Security Camera, Security Camera</p> |
|--|---|

References

-  [IP Scanner | Speco Technologies](#)