



# Speco Technologies O4VB1NG 4 Megapixel H.265 IP Bullet Camera with IR User Guide

[Home](#) » [speco technologies](#) » Speco Technologies O4VB1NG 4 Megapixel H.265 IP Bullet Camera with IR User Guide 

## Contents

- [1 Speco Technologies O4VB1NG 4 Megapixel H.265 IP Bullet Camera with IR](#)
- [2 Product Information](#)
- [3 Important Safeguards and Warnings](#)
- [4 Package Contents](#)
- [5 Product Usage Instructions](#)
- [6 Important Safeguards and Warning](#)
- [7 Package](#)
- [8 Overview](#)
- [9 Connecting Network Cable](#)
- [10 Installation](#)
- [11 Web Operation and Login](#)
- [12 Documents / Resources](#)
  - [12.1 References](#)
- [13 Related Posts](#)



**Speco Technologies O4VB1NG 4 Megapixel H.265 IP Bullet Camera with IR**



## Product Information

The O4VB1NG is a network camera designed to provide high-quality video surveillance for both indoor and outdoor environments. It features a CMOS sensor to capture clear and crisp images, an Ethernet port for network connectivity, and a microSD card slot for local storage. The camera is also equipped with a waterproof connector and an external microphone for enhanced functionality.

## Important Safeguards and Warnings

- Use a certified/listed 12VDC Class 2 power supply only. Do not connect two power supplying sources to the device at the same time.
- The product must be grounded to reduce the risk of electric shock.
- Do not expose the camera to electromagnetic radiation.
- This camera should be installed by qualified personnel only.
- Any unauthorized changes or modifications could void the warranty.

## Package Contents

- Camera
- Quick start guide
- CD
- Drill template
- 4 plastic screw anchors
- 1 fixed ring
- Mounting base
- Ethernet connector
- Audio input
- Power connector
- MicroSD card slot
- Reset button
- Waterproof connector
- External microphone

## Product Usage Instructions

1. Before installation, check the package and make sure that all components are included. Contact your rep or Speco customer service department immediately if something is broken or missing in the package.
2. Connect the camera to a certified/listed 12VDC Class 2 power supply or a PoE switch/injector.
3. Connect the camera to a network using the Ethernet port.
4. Mount the camera in a cool, dry place away from direct sunlight and heat sources. Do not install the product in extreme temperature conditions.
5. Use the provided drill template and plastic screw anchors to secure the mounting base to a wall or other surface.
6. Attach the camera to the mounting base using the fixed ring.
7. If using the external microphone, connect it to the audio input on the camera.
8. Insert a microSD card into the microSD card slot for local storage.
9. To clean the camera, shut down the device and unplug the power cable before using a blower or dry soft cloth to clean the lens surface. Do not touch the CMOS sensor optic component.
10. If technical assistance is needed, contact Speco Technologies Tech Support at 1-800-645-5516.

## Welcome

- Thank you for purchasing this network camera!
- This owner's manual is designed to be a reference tool for your system.
- Please read this manual carefully before operating the unit and retain it for future reference.
- Should you require any technical assistance, contact Speco Technologies Tech Support at 1-800-645-5516

## Important Safeguards and Warning

### 1. Electrical safety

- All installation and operation here should conform to local electrical safety codes.
- Use a certified/listed 12VDC Class 2 power supply only.
- Please note: Do not connect two power supplying sources to the device at the same time; it may result in device damage! The product must be grounded to reduce the risk of electric shock.
- Improper handling and/or installation could run the risk of fire or electrical shock.

### 2. Environment

- Heavy stress, violent vibration or exposure to water is not allowed during transportation, storage and installation.
- This product should be installed in a cool, dry place away from direct sunlight and heat sources.
- Do not install the product in extreme temperature conditions.
- Do not expose the camera to electromagnetic radiation. Otherwise it may result in CMOS sensor failure.
- Do not block any ventilation openings.
- Do not allow water and liquid intrusion into the camera.

### 3. Operation and Daily Maintenance

- Please shut down the device and then unplug the power cable before you begin any maintenance work.
- Do not touch the CMOS sensor optic component. You can use a blower to clean the dust on the lens

surface.

- Always use the dry soft cloth to clean the device. If there is too much dust, use a cloth dampened with a small quantity of neutral detergent. Finally use the dry cloth to clean the device.
- Please use a professional optical cleaning method to clean the enclosure. Improper enclosure cleaning (such as using cloth) may result in poor IR functionality and/or IR reflection.
- The grounding holes of the product are recommended to be grounded to further enhance the reliability of the camera.
- Dome cover is an optical device, please don't touch or wipe cover surface directly during installation and use, please refer to the following methods if dirt is found:
  - Stained with dirt: Use oil-free soft brush or hair dryer to remove it gently.
  - Stained with grease or fingerprint: Use oil-free cotton cloth or paper soaked with alcohol or detergent to wipe from the lens center outward. Change the cloth and wipe several times if it is not clean enough.

## **Warning**

- This camera should be installed by qualified personnel only.
- All the examination and repair work should be done by qualified personnel.
- Any unauthorized changes or modifications could void the warranty.

## **Statement**

- This guide is for reference only.
- Product, manuals and specifications may be modified without prior notice. Speco
- Technologies reserves the right to modify these without notice and without incurring any obligation.
- Speco Technologies is not liable for any loss caused by improper operation

## **Note:**

- Before installation, check the package and make sure that all components are included.
- Contact your rep or Speco customer service department immediately if something is broken or missing in the package.

## **Package**



Camera



Quick start guide



CD



Drill Template



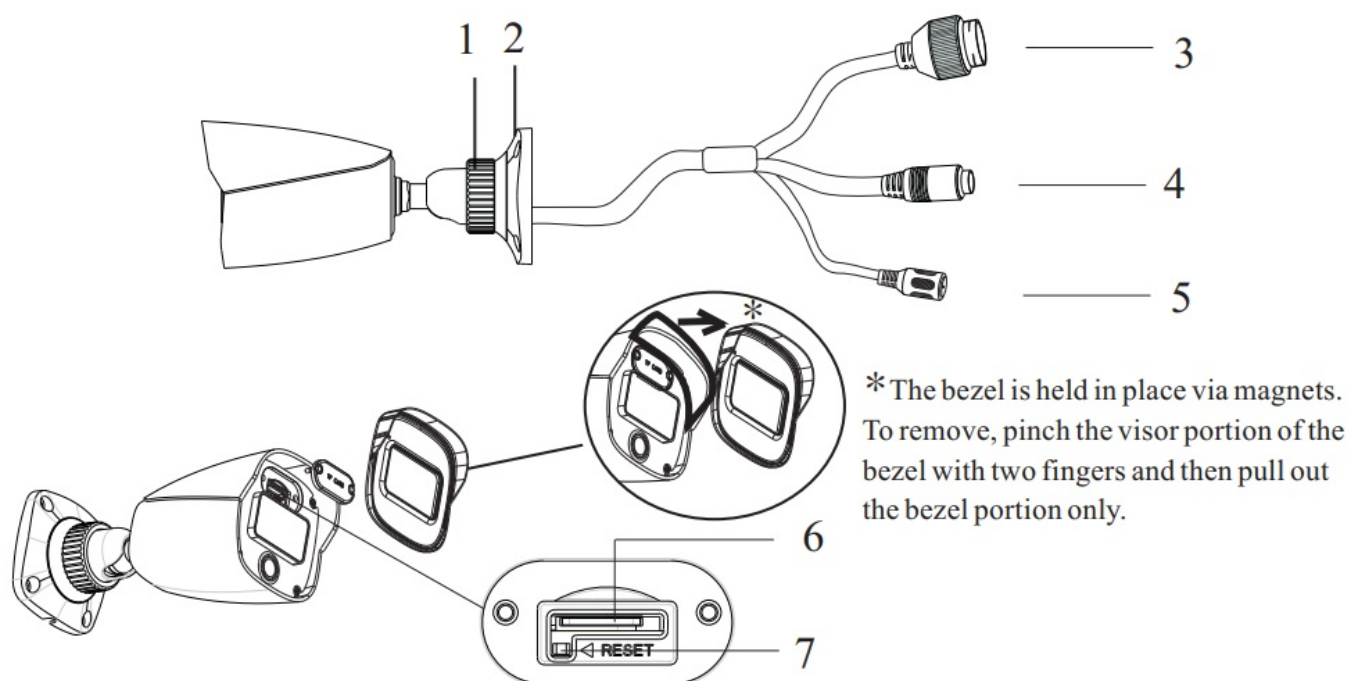
4 screws (PA 4×25mm)

1 screw (PWM3×5mm)

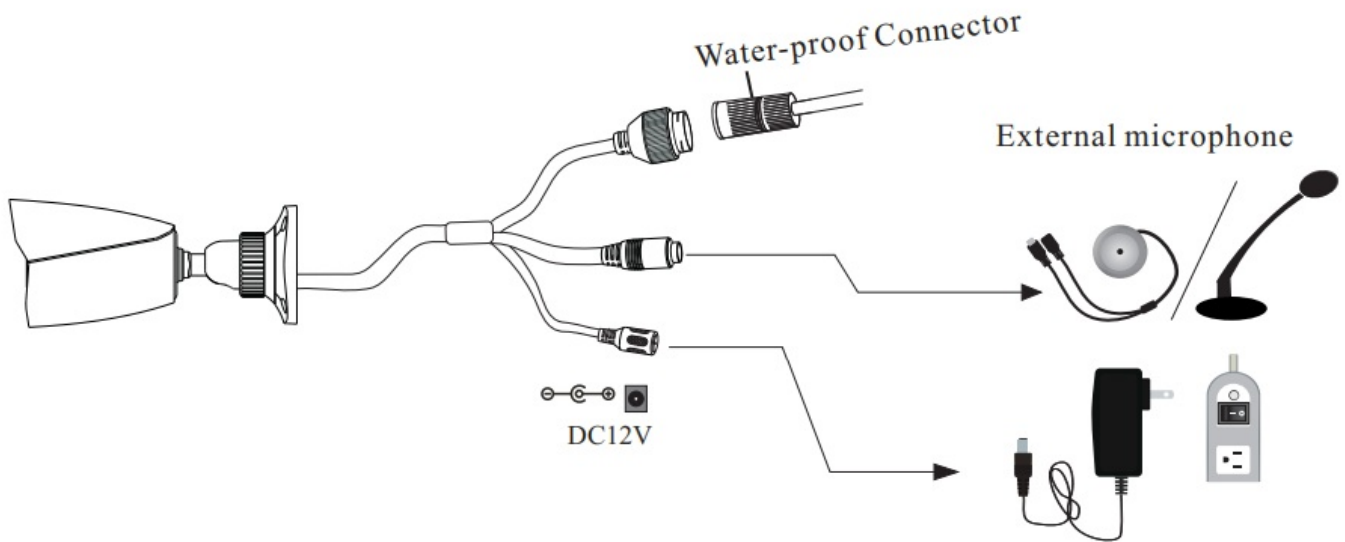


4 Plastic screw anchors

## Overview

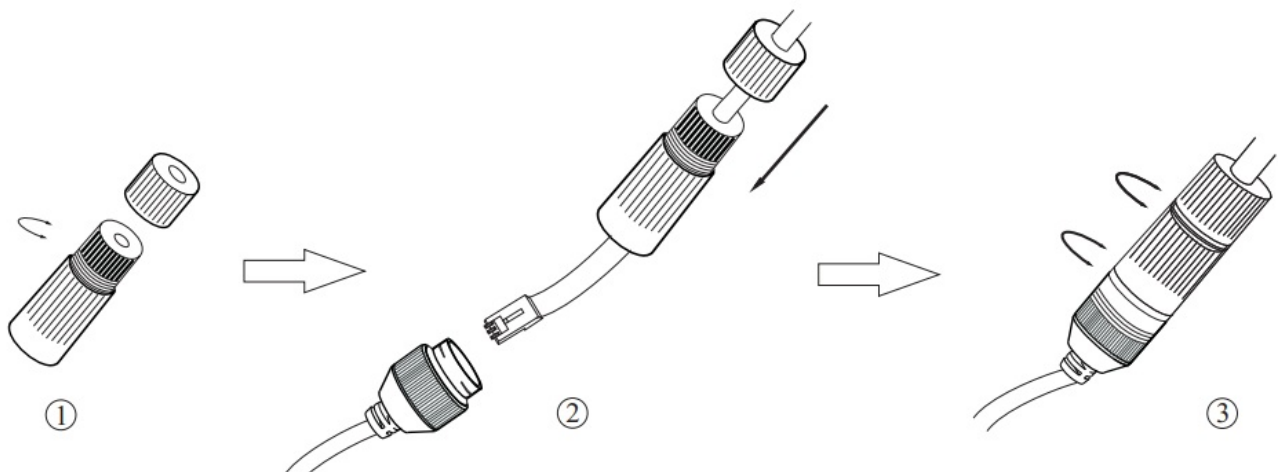


1	Fixed ring	5	Power connector
2	Mounting base	6	Micro SD card slot
3	Ethernet connector	7	Reset
4	Audio input		



1. It is recommended to install the security cap for outdoor installations.
2. DC 12V power supply is not required if a PoE switch or injector is used to power the camera.

## Connecting Network Cable

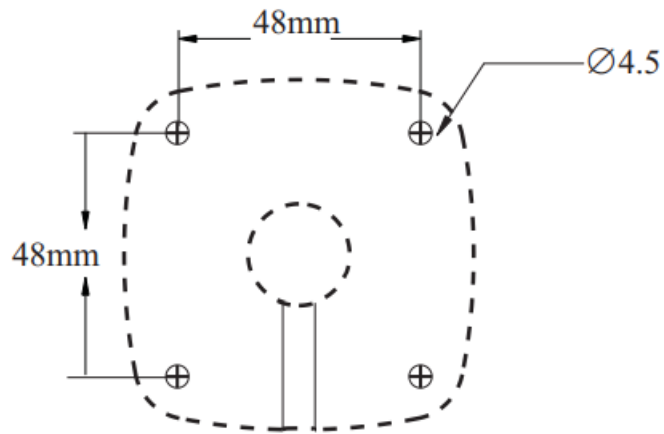


1. Loosen the nut from the main element.
2. Run the network cable (without RJ 45 connector) through both elements. Then crimp the cable with RJ 45 connector.
3. Connect the cable to the water-proof connector. Then tighten the nut and the main cover.

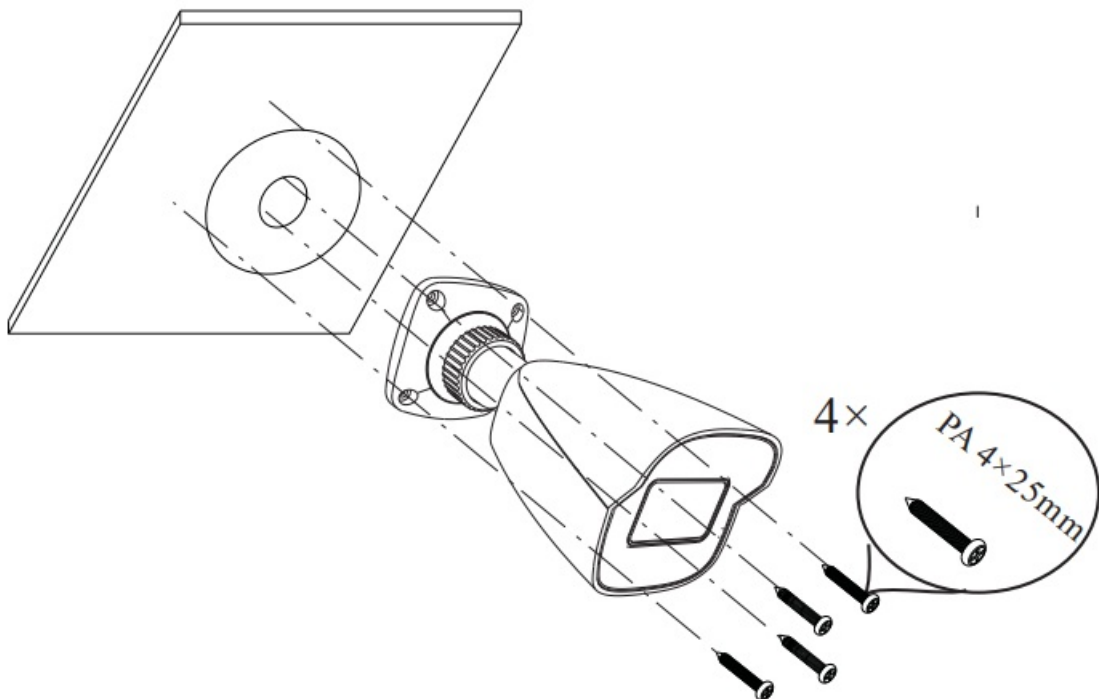
## Installation

Before you start, please make sure that the wall or ceiling is strong enough to withstand three times the weight of the camera.

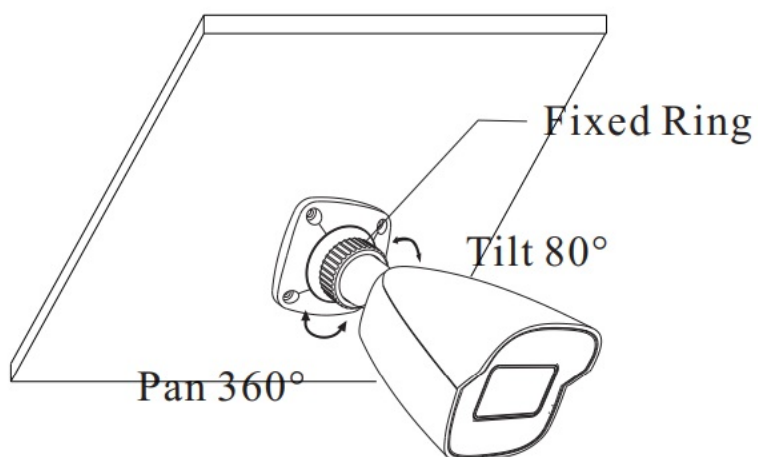
1. Attach the drill template to the place where you want to fix the camera and then drill the screw holes and the cable hole on the wall according to the drill template.



2. Route and connect the cables .
3. Secure the mounting base with camera to the wall with screws as shown below.



4. Bracket adjustment. Before adjustment, preview the image of the camera on a monitor and then loosen the fixed ring to adjust the view angle of the camera



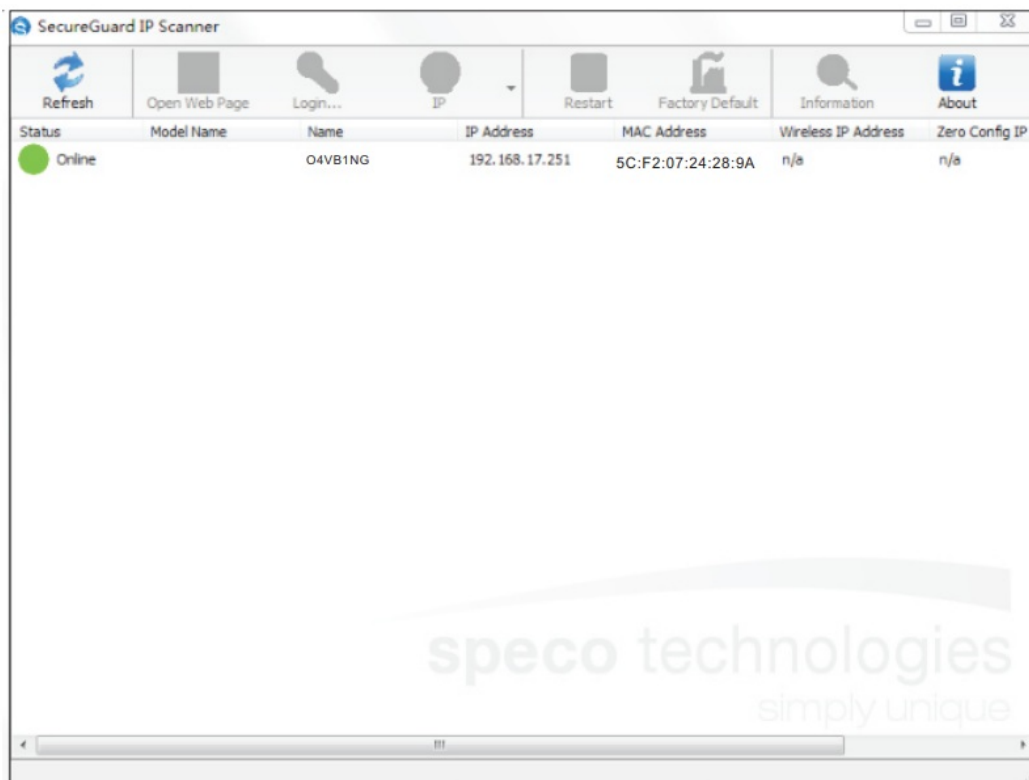
5. Tighten the fixed ring after the adjustment

## Web Operation and Login

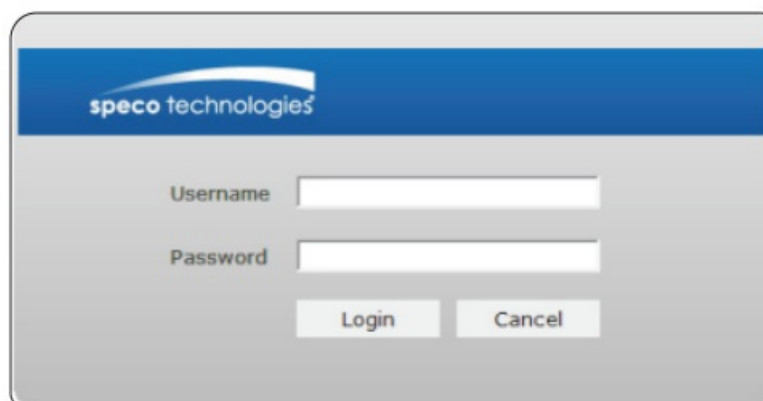
### Operation

IP Scanner can search for the device on the local network.

1. Make sure that the camera and the PC are connected to the same local network. The camera is set to DHCP by default.
2. Install IP Scanner from the CD and run it after installation. Or download from <https://www.specotech.com/ip-scanner/>





3. In the device list, you can view the IP address, model number, and MAC address of each device. Select the applicable device and double click to open up the web viewer. You can also manually enter the IP address in the address bar of the web browser.



The login interface is shown above. Default user name is admin and password is 1234. After logging in, follow directions to install applicable plugins if prompted.

## Documents / Resources



 Quick Start Guide O4VB1NG 	<a href="#">Speco Technologies O4VB1NG 4 Megapixel H.265 IP Bullet Camera with IR</a> [pdf] User Guide O4VB1NG 4 Megapixel H.265 IP Bullet Camera with IR, O4VB1NG, 4 Megapixel H.265 IP Bullet Camera with IR, Bullet Camera with IR, Camera with IR
--------------------------------------------------------------------------------------------------------------------------------------------------------------------------------------------------------	----------------------------------------------------------------------------------------------------------------------------------------------------------------------------------------------------------------------------------------------------------

References

-  [IP Scanner](#) | [Speco Technologies](#)