



Special Needs Computers 15.1038 Magnitude Switch L User Guide

[Home](#) » [Special Needs Computers](#) » Special Needs Computers 15.1038 Magnitude Switch L User Guide 

Contents

- [1 Special Needs Computers 15.1038 Magnitude Switch L](#)
- [2 Product Usage Instructions](#)
- [3 Installation](#)
- [4 Dimensions](#)
- [5 Documents / Resources](#)
 - [5.1 References](#)
- [6 Related Posts](#)



Special Needs Computers 15.1038 Magnitude Switch L



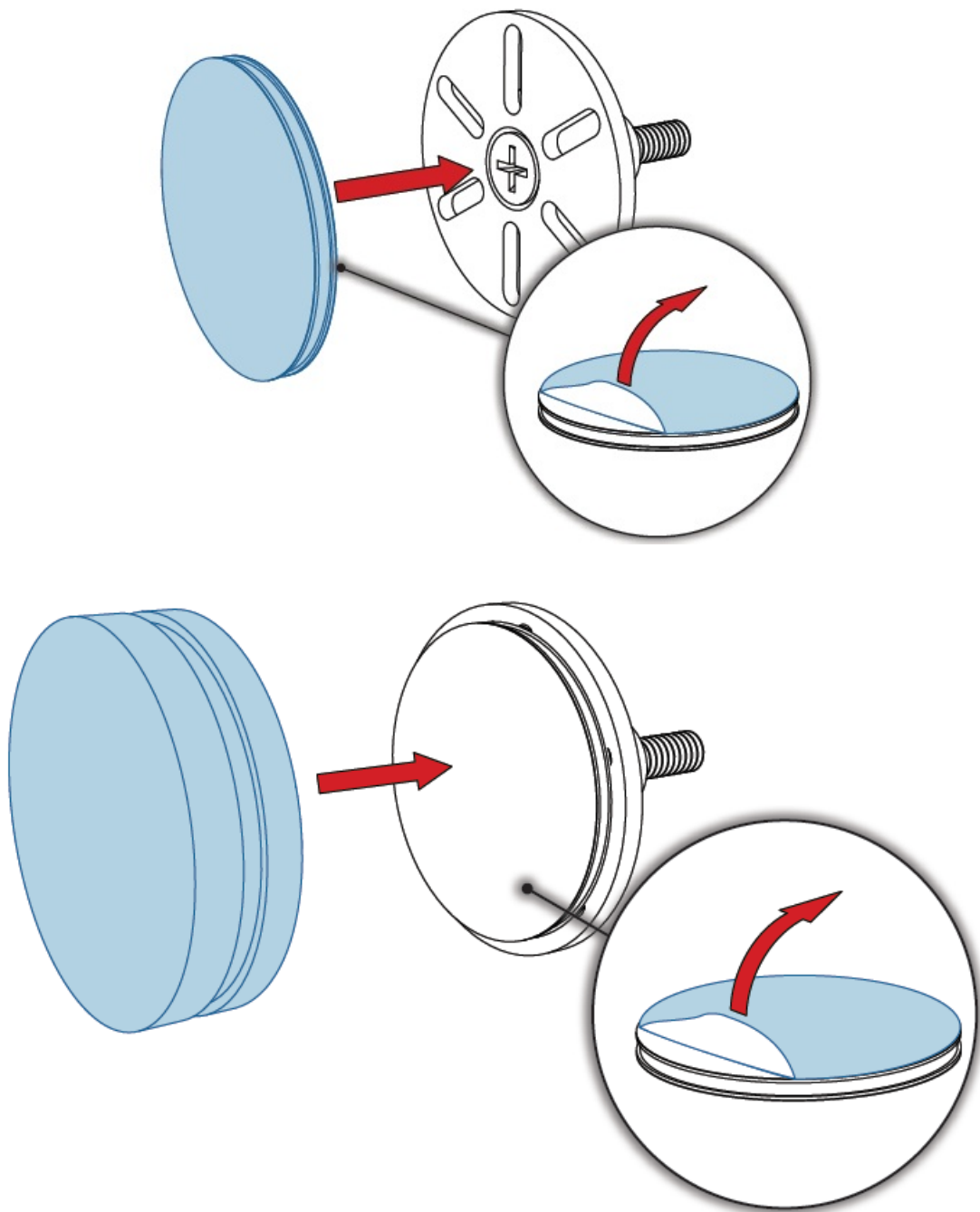
Product Information

Specifications

- Model Numbers: 15.1038 (Magnitude Switch S), 15.1039 (Magnitude Switch M), 15.1040 (Magnitude Switch L)
- Manufacturer: Rehadapt GmbH
- Address: E0 Heinrich-Hertz-Str. 104, 34123 Kassel, Germany
- Contact: Tel.: +49 561 220 717 0, Fax: +49 561 220 717 99, Email: officeteam@rehadapt.com

Product Usage Instructions

Installation



1. Identify the appropriate Magnitude Switch size (S, M, L) based on your requirements.
2. Ensure the area where the switch will be installed is clean and dry.

3. Attach the Magnitude Switch securely using the provided mounting hardware.

Operation

1. To use the Magnitude Switch, press the switch according to the desired action.
2. Ensure proper connection to the compatible device for accurate functionality.
3. Refer to the device manual for specific instructions on integrating the Magnitude Switch.

Maintenance

Regularly check the switch for any signs of damage or wear. Clean gently with a soft, damp cloth if needed.

FAQ

- **Q: How do I determine the correct size of the Magnitude Switch to use?**

A: The S, M, and L sizes are designed for different purposes. Choose based on your specific needs and compatibility with your devices.

- **Q: What should I do if the Magnitude Switch is not responding?**

A: Check the connection to ensure it is secure. If issues persist, contact customer support for further assistance.

- 15.1038 – Magnitude Switch S
- 15.1039 – Magnitude Switch M
- 15.1040 – Magnitude Switch L



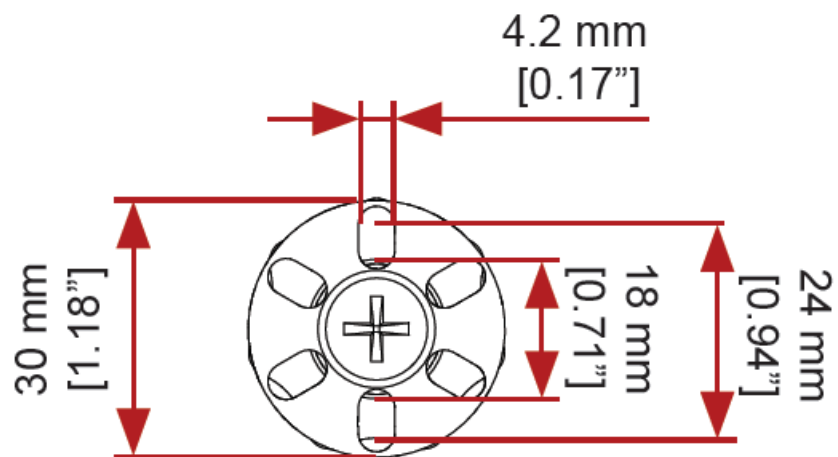
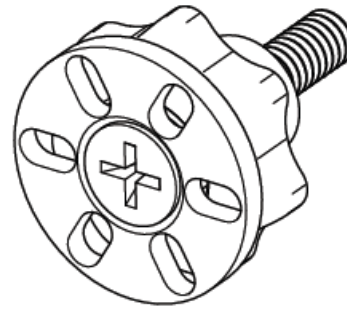
Dimensions

15.1038 – Magnitude Switch S

1x



1x 01.0689
Velcro Ø25

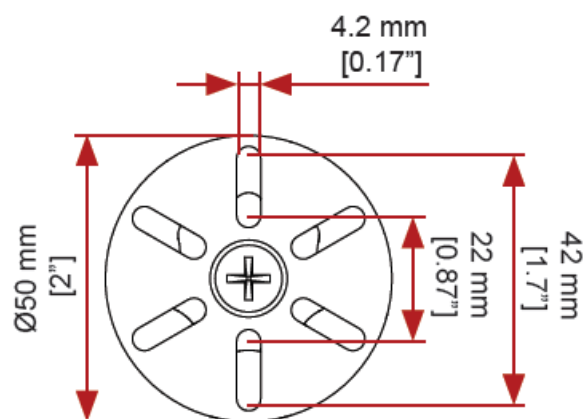


15.1039 – Magnitude Switch M

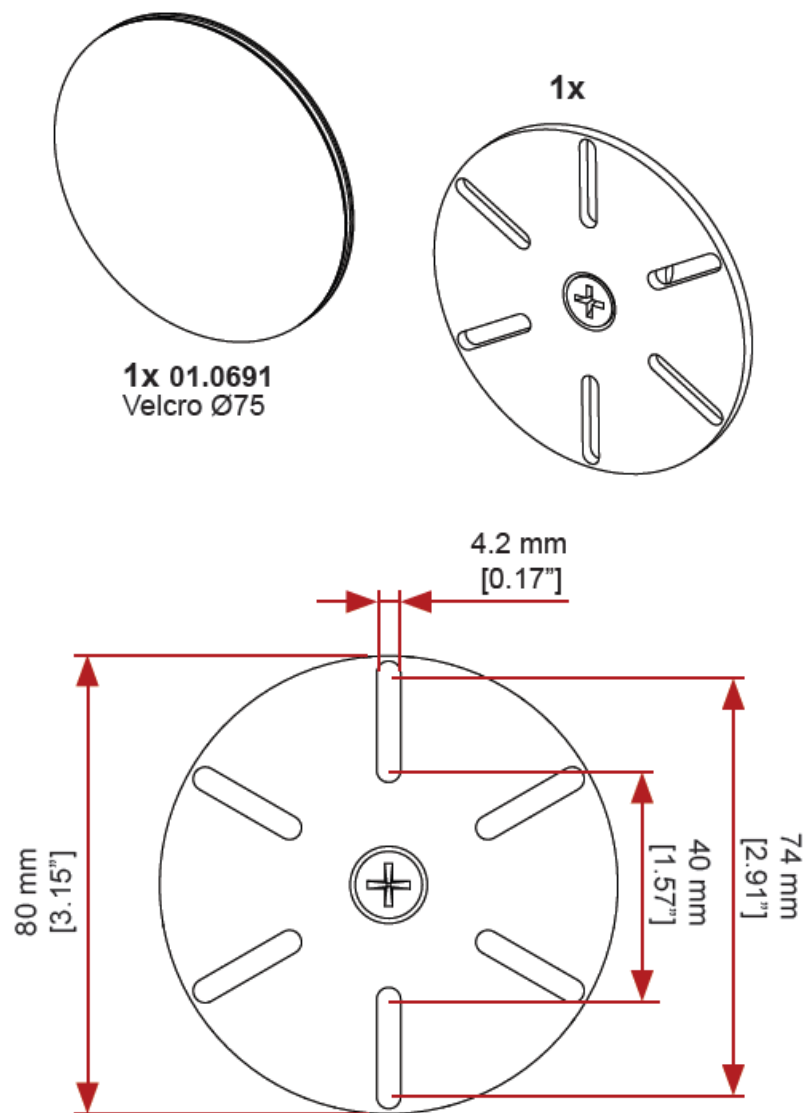


1x 01.0690
Velcro Ø45

1x



15.1040 – Magnitude Switch L)



Rehadapt GmbH
Heinrich-Hertz-Str. 104
34123 Kassel, Germany

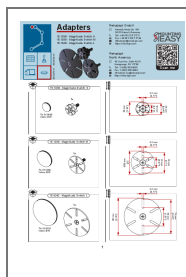
- Tel.: +49 561 220 717 0
- Fax: +49 561 220 717 99
- officeteam@rehadapt.com
- <https://rehadapt.com>

**Rehadapt
North America**
40 Oser Ave, Suite 40-01
Hauppauge, NY 11788

- Tel.: 1 [888-635-6962](tel:888-635-6962)
- Fax: 1 [888-635-6962](tel:888-635-6962)
- officeteam.na@rehadapt.com
- <https://rehadapt.com>



Documents / Resources



[Special Needs Computers 15.1038 Magnitude Switch L](#) [pdf] User Guide
15.1038, 15.1039, 15.1040, 15.1038 Magnitude Switch L, 15.1038, Magnitude Switch L, Switch L

References

- [Rehadapt](#)
- [User Manual](#)

[Manuals+.](#) [Privacy Policy](#)

This website is an independent publication and is neither affiliated with nor endorsed by any of the trademark owners. The "Bluetooth®" word mark and logos are registered trademarks owned by Bluetooth SIG, Inc. The "Wi-Fi®" word mark and logos are registered trademarks owned by the Wi-Fi Alliance. Any use of these marks on this website does not imply any affiliation with or endorsement.