

Spec5 S5 Relay from On Tindie



# Spec5 S5 Relay from On Tindie Installation Guide

[Home](#) » [Spec5](#) » Spec5 S5 Relay from On Tindie Installation Guide 

## Contents

- [1 Spec5 S5 Relay from On Tindie](#)
- [2 \\$5 Relay Installation Guide](#)
- [3 Mounting Considerations:](#)
- [4 Documents / Resources](#)
  - [4.1 References](#)
- [5 Related Posts](#)

**spec**<sup>5</sup>

**Spec5 S5 Relay from On Tindie**



## \$5 Relay Installation Guide

Thank you for ordering your S5 Relay from SpecFive. Here are the instructions to get you connected to your new device and join the mesh.

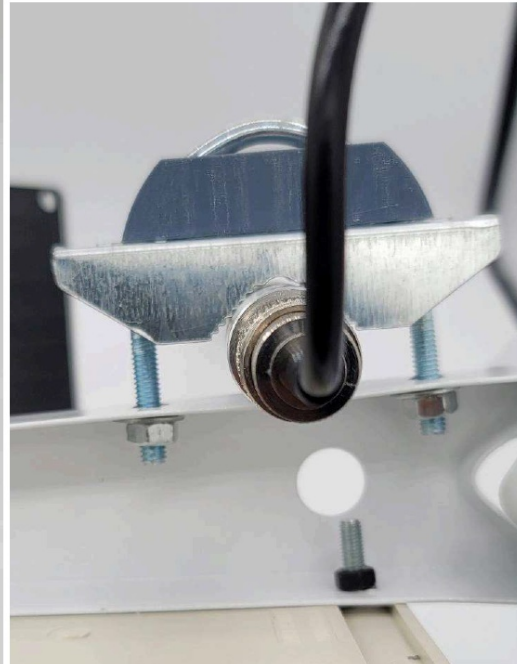
**Warning:** Do not power on your S5 Relay until you have connected the antenna. Powering the S5 Relay without the antenna connected can cause damage to the board.

### Mounting Considerations:

- Line of Sight is very important to achieve long range communications. Obstructions like buildings, trees and topography will limit your range. Mounting your S5 Relay high above obstructions is best.
- Solar Panel Direction: For maximum efficiency, solar panels should ideally face true south (not magnetic south) in most locations in the continental US with the Panel tilted 15-40 Degrees from horizontal.
- Your S5 Relay should be attached to a pole with a diameter of 1-3 inches.

### Setup:

1. Slip the Antenna through the clamp on the side of the S5 Relay. The Teeth on the Clamp need to engage with the 2 grooves in the aluminum base of the Antenna. Use a 10mm wrench to tighten the U-Bolt until the Antenna has no movement. If you overtighten the U-bolt you will deform the mounting arm of your S5 Relay.



2. Connect the Antenna extension cable to the base of the Antenna.
3. Remove the 4 Screws from the Water-proof Box with a Phillips Head Screwdriver to remove the cover and access the battery connection.



4. The battery is not connected for shipping. Connect the battery cable to the larger White Connector on the board. The Red (positive Battery Lead should be closest to the center of the board).



Once the battery is connected the S5 Relay will be powered on as there is no power switch. Please be mindful that the battery will drain when it is connected to the board without 5 volt Power input from the USB, either from an external power source or the provided Solar panel.

5. Reinstall the Cover, ensuring that the gasket is still in place.
6. Install the Solar Panel to the tilting bracket using the supplied screw in the back of the solar panel. Tighten with a 10mm wrench.



7. Connect the USB cable coming out of the Waterproof Box to the USB cable of the Solar Panel.

Your S5 Relay is now ready to mount to your pole.

### Configuration:

Your S5 Relay is set up as a “Repeater” in the Meshtastic firmware. You can connect to your S5 Relay over Bluetooth using the Meshtastic App.

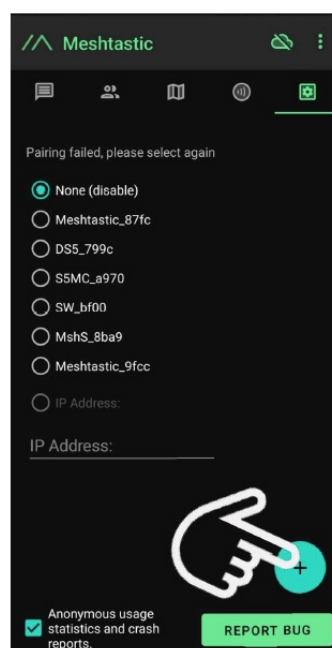
1. Download and install the Meshtastic App from the Apple App Store or Google Play Store



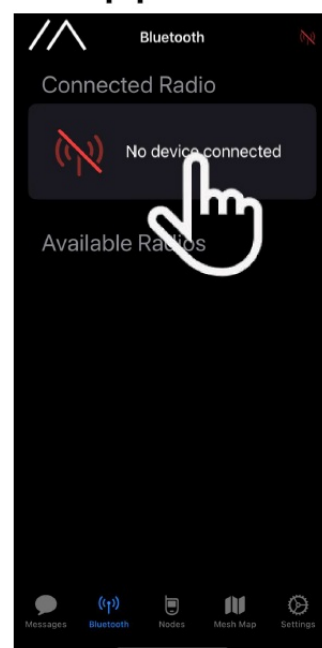
2. Turn on your Phone or Tablet's Bluetooth and open the Meshtastic app.

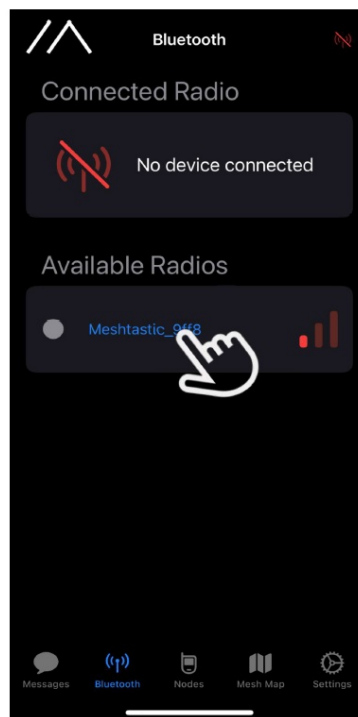
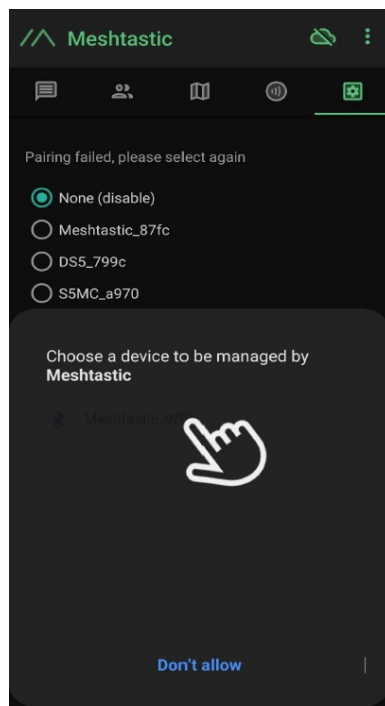
3. **Connect new Device:**

### Android



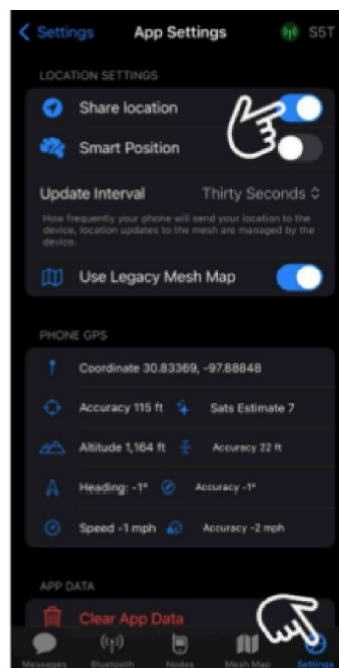
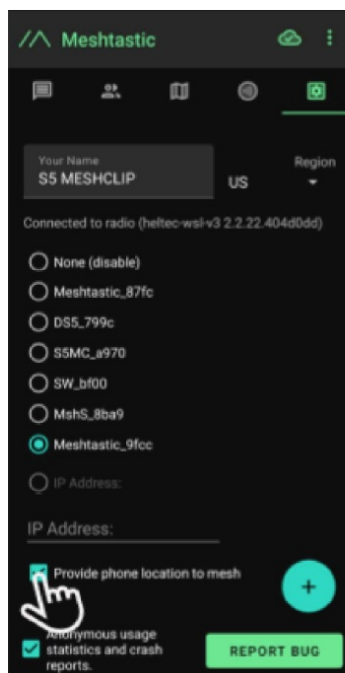
### Apple





1. The device PIN is: 123456

4. To use your phone/tablet's location for the location of your device:



1. Please refer to the Meshtastic website for any other configuration settings.

Happy Meshing and Thank You from the SpecFive Team!  
© 2024, SpecFive LLC All Right Reserved

## Documents / Resources

	<p><a href="#">Spec5 S5 Relay from On Tindie</a> [pdf] Installation Guide</p> <p>S5 Relay from On Tindie, S5, Relay from On Tindie, from On Tindie, On Tindie, Tindie</p>
--	---

## References

- [User Manual](#)

[Manuals+](#), [Privacy Policy](#)

This website is an independent publication and is neither affiliated with nor endorsed by any of the trademark owners. The "Bluetooth®" word mark and logos are registered trademarks owned by Bluetooth SIG, Inc. The "Wi-Fi®" word mark and logos are registered trademarks owned by the Wi-Fi Alliance. Any use of these marks on this website does not imply any affiliation with or endorsement.