

**SPEAKMAN®
S-6000 Series
Multi Function 5
Plunger Polished
Chrome Shower**



SPEAKMAN S-6000 Series Multi Function 5 Plunger Polished Chrome Shower Instruction Manual

[Home](#) » [SPEAKMAN](#) » **SPEAKMAN S-6000 Series Multi Function 5 Plunger Polished Chrome Shower Instruction Manual** 

Contents

- [1 SPEAKMAN S-6000 Series Multi Function 5 Plunger Polished Chrome Shower](#)
- [2 Product Information](#)
- [3 Product Usage Instructions](#)
- [4 FAQ](#)
- [5 TOOLS AND SUPPLIES](#)
- [6 SAFETY](#)
- [7 MAINTENANCE](#)
- [8 WARRANTY](#)
- [9 INSTALLATION INSTRUCTIONS](#)
- [10 DIMENSIONS](#)
- [11 MORE INFORMATION](#)
- [12 Contact](#)
- [13 Documents / Resources](#)
 - [13.1 References](#)
- [14 Related Posts](#)

SPEAKMAN®

SPEAKMAN S-6000 Series Multi Function 5 Plunger Polished Chrome Shower



Product Information

Specifications:

- **Inlet:** 1/2 NPT FEMALE

Product Usage Instructions

Installation:

1. Apply Thread Seal Tape to the outlet side of the shower arm in a clockwise direction.
2. Thread the Shower head onto the shower arm by turning it clockwise. Tighten with an adjustable wrench.
3. Turn on the water supply and check for leaks.

Changing Spray Settings:

Rotate the Spray Face to change Spray Settings.

Operating Range:

This showerhead has an operating range of 20-80 psi.

Safety Tips:

Cover your drain to prevent loss of parts during installation.

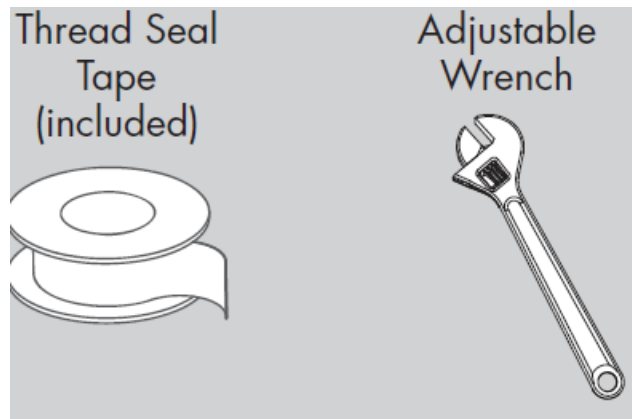
Maintenance:

Regular maintenance is recommended to ensure optimal performance. Refer to the warranty information for details.

FAQ

- **Q:** Where can I find warranty information?
 - **A:** Warranty information can be found at www.speakman.com.
- **Q:** What is the maximum and minimum flow rate for each model?
 - **A: Model S-6000:** Max. Flow Rate – 2.5 gpm (9.5L/min), Min. Flow Rate – 2.0 gpm (7.6 L/min) @ 45psi
 - **Model S-6000-E2:** Max. Flow Rate – 2.0 gpm (7.6 L/min), Min. Flow Rate – 1.75 gpm (6.6 L/min) @ 45 psi
 - **Model S-6000-E175:** Max. Flow Rate – 1.75 gpm (6.6 L/min), Min. Flow Rate – 1.50 gpm (5.7 L/min) @ 45 psi
- **Q:** What type of valves are recommended for use with each model?
 - **A:** Each model is recommended for use with automatic compensating valves rated at or below the specified flow rates.

TOOLS AND SUPPLIES



SAFETY

IMPORTANT

Be sure to read instructions thoroughly before beginning installation. Do not overtighten any connections or damage may occur. This showerhead has an operating range of 20-80 psi.

SAFETY TIPS

Cover your drain to prevent loss of parts.

MAINTENANCE

- Periodic cleaning using a mild soap and warm water will help keep your Showerhead's appearance in its original condition.
- For best results, dry immediately with a soft, clean cloth.
- **DO NOT USE** harsh and/or abrasive cleaners.
- To help restore the finish, occasionally apply a non-abrasive wax to your showerhead body (follow

manufacturers' instructions).

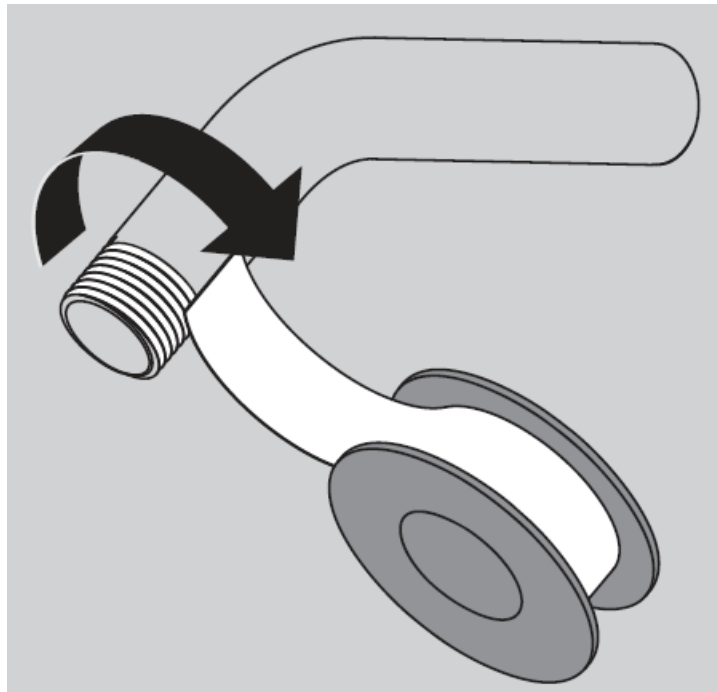
- On **CHROME PLATED SHOWER HEADS**, a two (2) part white vinegar, one (1) part water solution can be used to break down excessive mineral deposits on the sprays. Let the showerhead soak in the solution for about ½ hour then rinse thoroughly. Brush off any remaining mineral deposits if necessary.
- **DO NOT USE** the vinegar/water treatment on any finish other than Chrome.
- To reduce mineral build-up, turn the handle to RAIN position to let the water drain out after every use.

WARRANTY

Warranty information can be found at: www.speakman.com

INSTALLATION INSTRUCTIONS

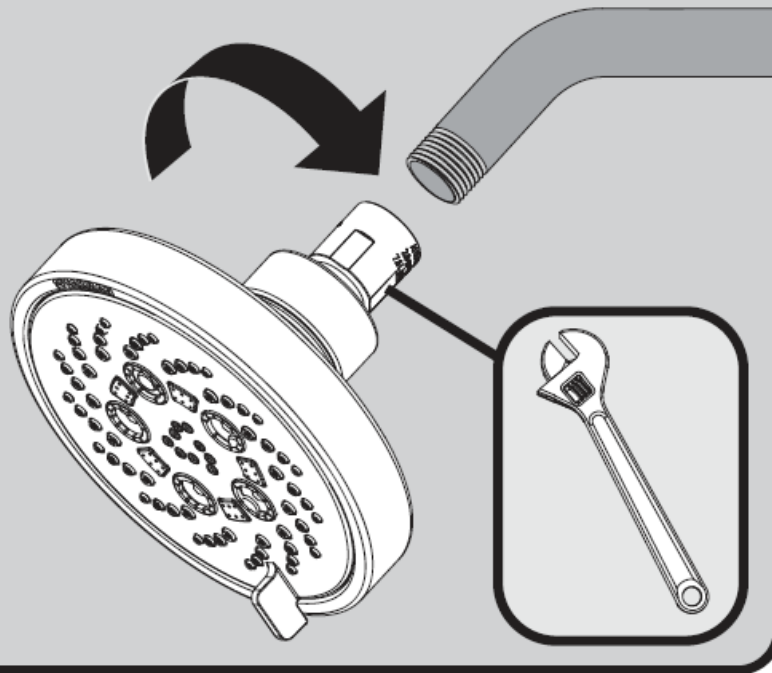
- Apply Thread Seal Tape to the outlet side of shower arm in a clockwise direction.
-



Thread Shower head onto shower arm by turning it in a clockwise direction. Tighten with adjustable wrench. Turn water supply on and check for leaks.

2

Thread Shower head onto shower arm by turning it in a clockwise direction. Tighten with adjustable wrench. Turn water supply on and check for leaks.



- Rotate Spray Face to change Spray Settings.

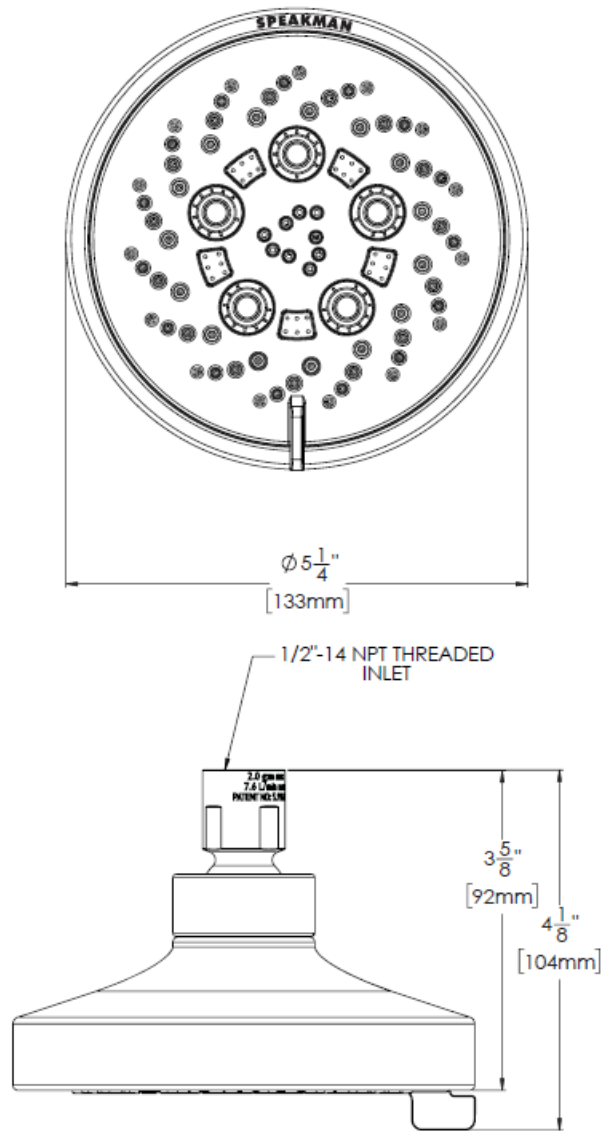
3

Rotate Spray Face to change Spray Settings.



DIMENSIONS

ROUGH IN DIMENSIONS



MORE INFORMATION

Model: S-6000

- **Max. Flow Rate:** 2.5 gpm (9.5L/min)
- **Min. Flow Rate:** 2.0 gpm (7.6 L/min) @ 45psi
FOR USE WITH AUTOMATIC COMPENSATING VALVES RATED AT 7.6 L/MIN (2.0 GPM) OR LESS.

Model: S-6000-E2

- **Max. Flow Rate:** 2.0 gpm (7.6 L/min)
- **Min. Flow Rate:** 1.75 gpm (6.6 L/min) @ 45 psi
FOR USE WITH AUTOMATIC COMPENSATING VALVES RATED AT 6.6 L/MIN (1.75 GPM) OR LESS.

Model: S-6000-E175

- **Max. Flow Rate:** 1.75 gpm (6.6 L/min)
- **Min. Flow Rate:** 1.50 gpm (5.7 L/min) @ 45 psi

Specifications:

- **Inlet:** 1/2" NPT FEMALE


Contact

For additional assistance or service please contact:

SPEAKMAN® Company

- 400 Anchor Mill Road
- New Castle, DE 19720FOR USE WITH AUTOMATIC COMPENSATING VALVES RATED
- AT 5.7 L/MIN (1.50 GPM) OR LESS.
- [800-537-2107](tel:800-537-2107)
- customerservice@speakman.com
- www.speakman.com

Documents / Resources

	<p>SPEAKMAN S-6000 Series Multi Function 5 Plunger Polished Chrome Shower [pdf] Instruction Manual</p> <p>S-6000, S-6000-E2, S-6000-E175, S-6000 Series Multi Function 5 Plunger Polished Chrome Shower, S-6000 Series, Multi Function 5 Plunger Polished Chrome Shower, Function 5 Plunger Polished Chrome Shower, Plunger Polished Chrome Shower, Polished Chrome Shower, Chrome Shower, Shower</p>
--	---

References

- [User Manual](#)

[Manuals+](#), [Privacy Policy](#)

This website is an independent publication and is neither affiliated with nor endorsed by any of the trademark owners. The "Bluetooth®" word mark and logos are registered trademarks owned by Bluetooth SIG, Inc. The "Wi-Fi®" word mark and logos are registered trademarks owned by the Wi-Fi Alliance. Any use of these marks on this website does not imply any affiliation with or endorsement.