

SpeaKa SP-POS-100 POS Mounting Solution Instruction Manual

Contents

1 Mounting instructions

2 POS mounting solution

3 Documents / Resources

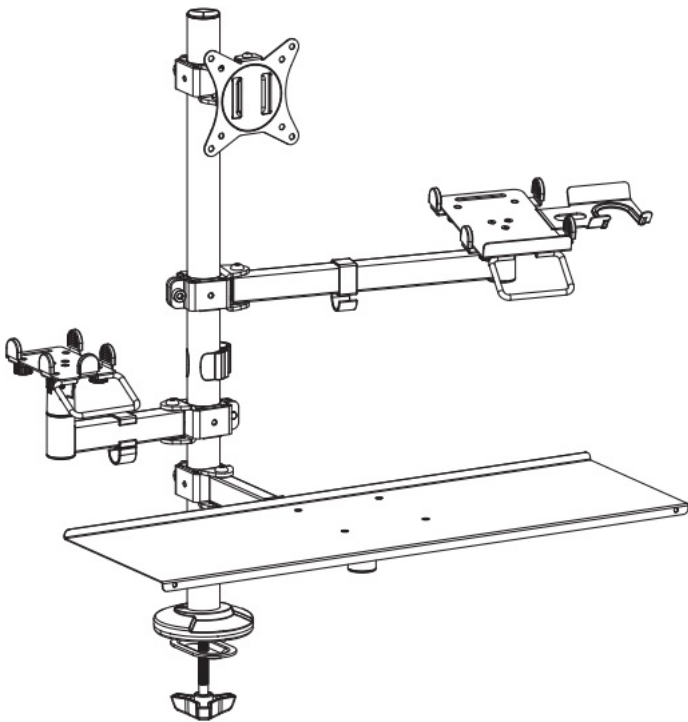
3.1 References

4 Related Posts

Mounting instructions

POS mounting solution

Item no: 2987166



SP-POS-100	VESA Compatible 75x75 100x100	 32" MAX	 9kg (19.8lbs) RATED
------------	----------------------------------	--	--



A (x1)

B (x1)

C (x1)

D (x1)



E (x1)

F (x1)

G (x1)

H (x1)

I (x1)



J (x1)

K (x2)

L (x3)

M (x2)

M5x6

N (x1)

M6x10



O (x4) M5

P (x1) 4mm

Q (x1) 6mm

R (x1) 8mm



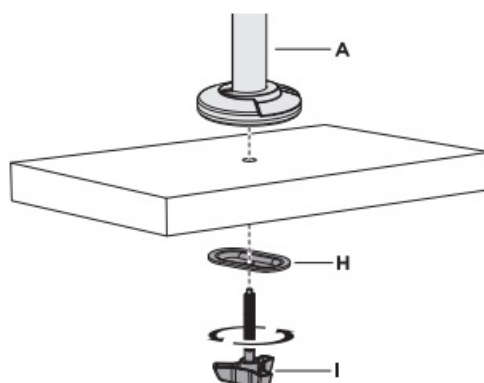
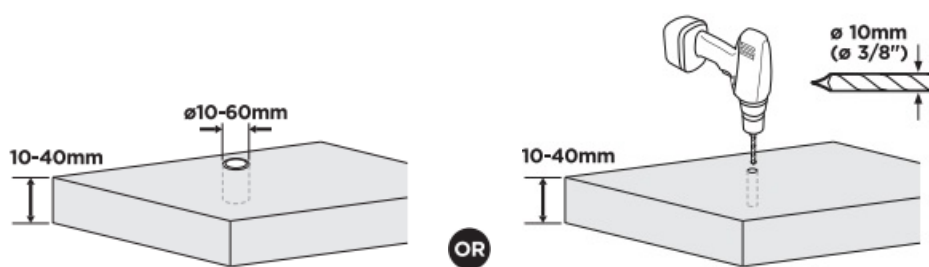
M-A (x4) M4x12

M-B (x4) M5x12

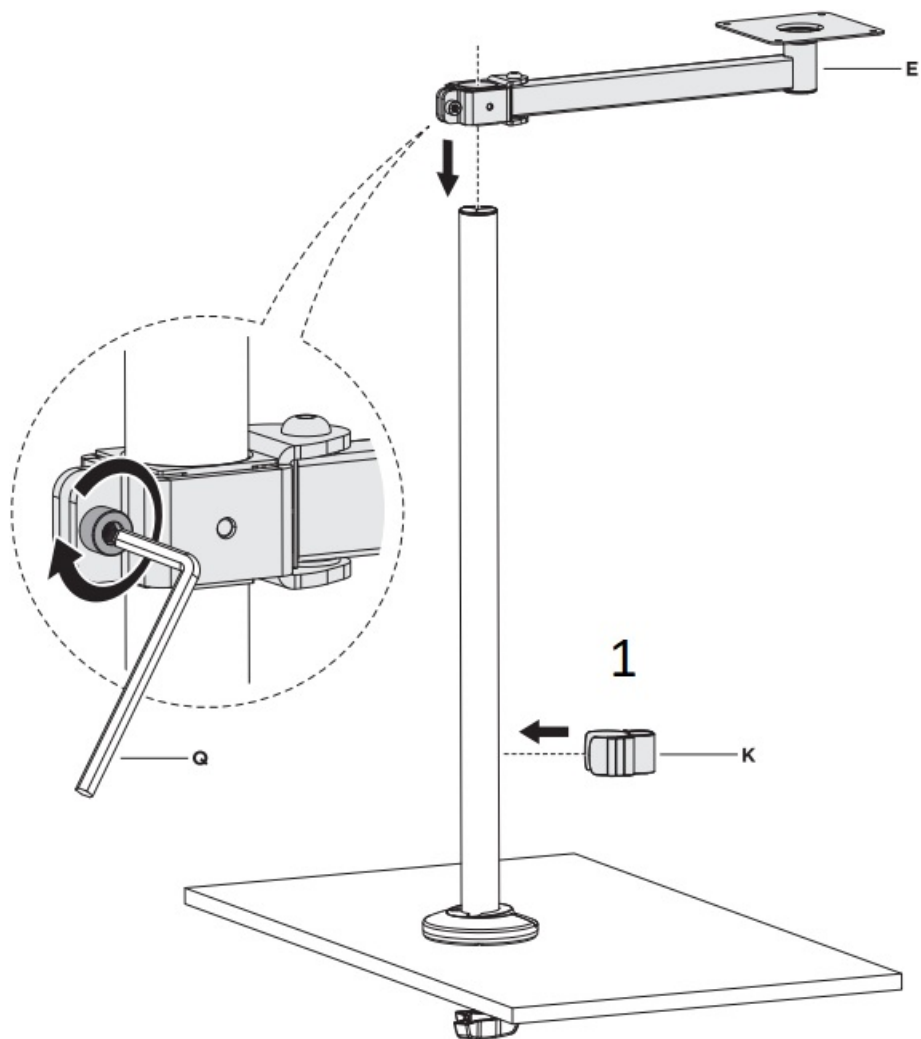
M-C (x4) D5

1

Desktop with Existing Through-Hole.

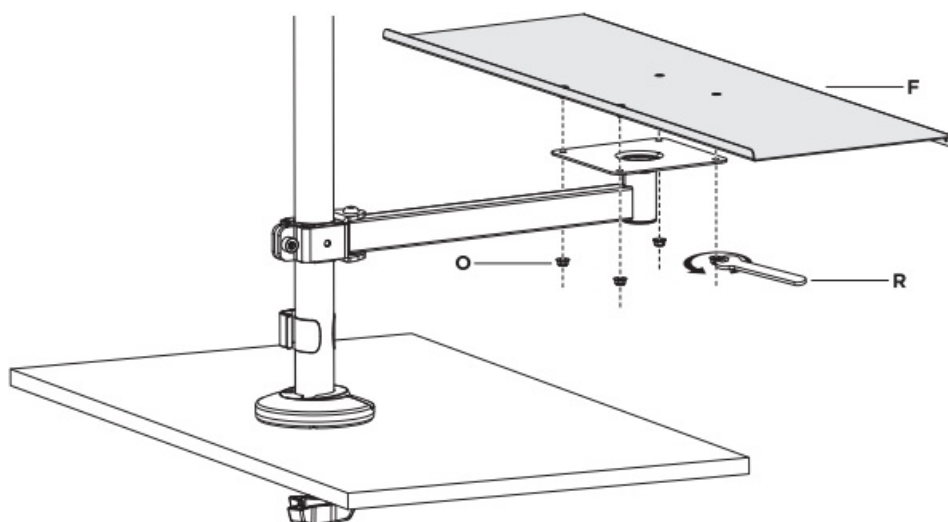


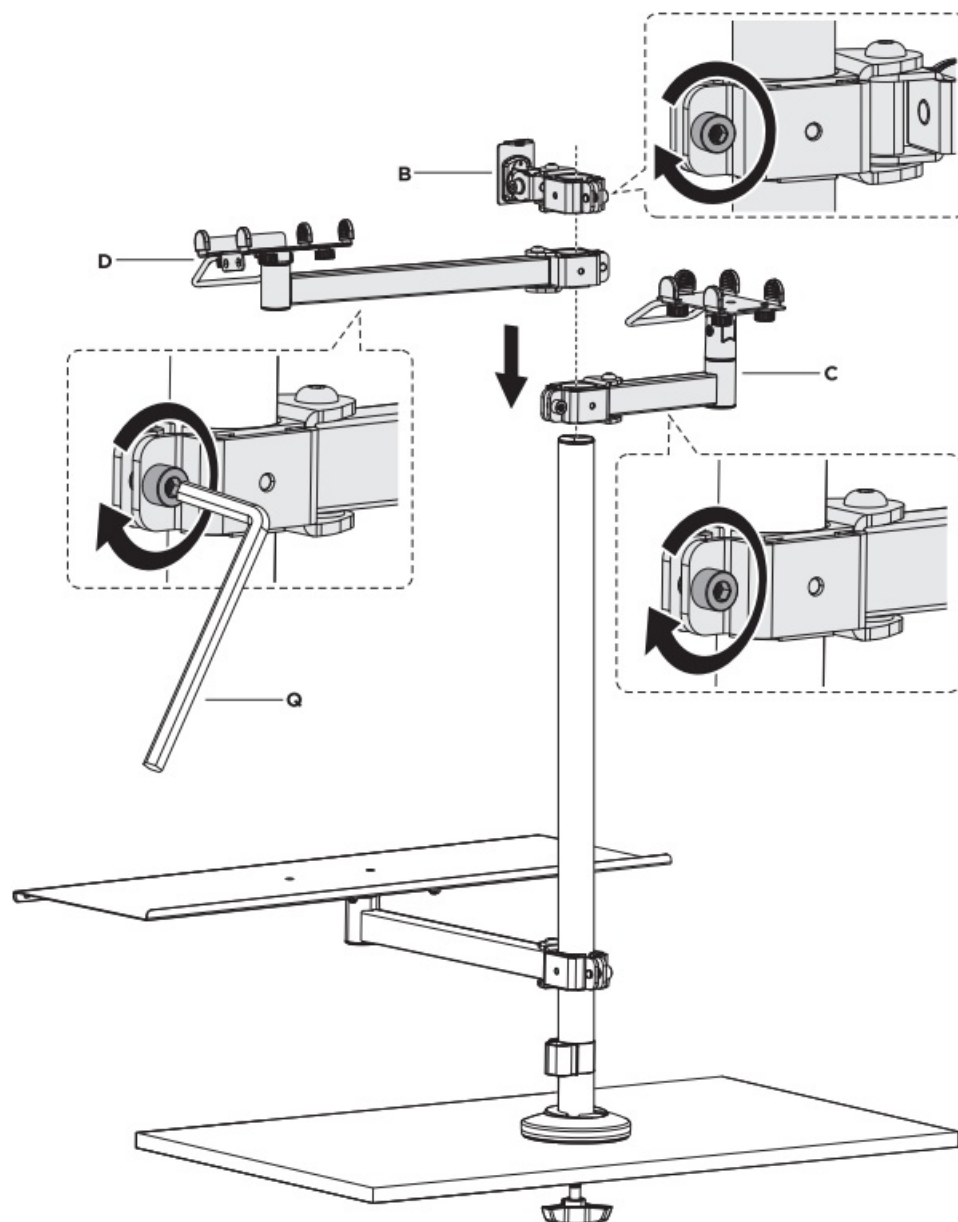
2

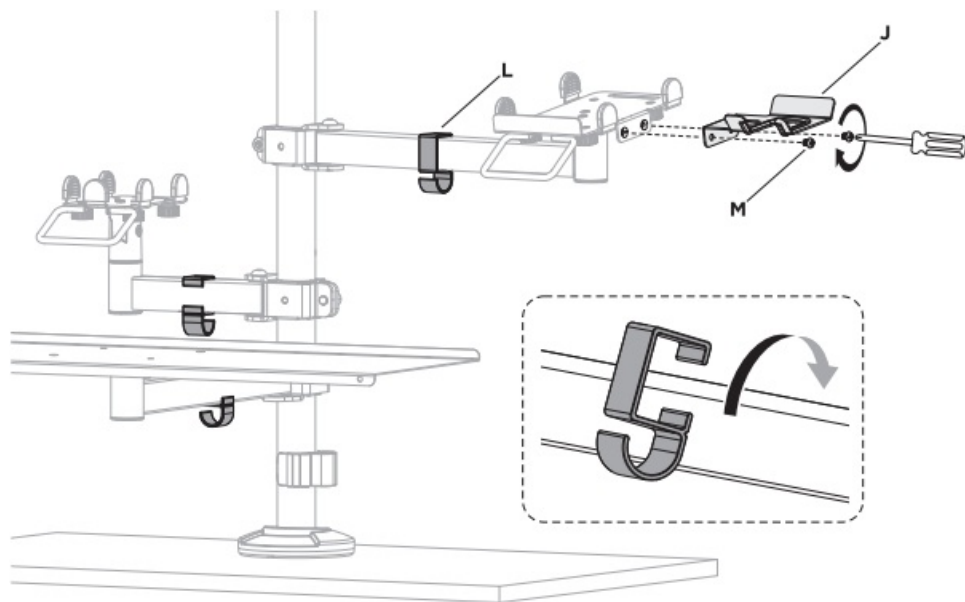


1. Cable clip (K) can be adjusted by demands.

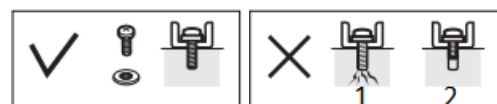
3



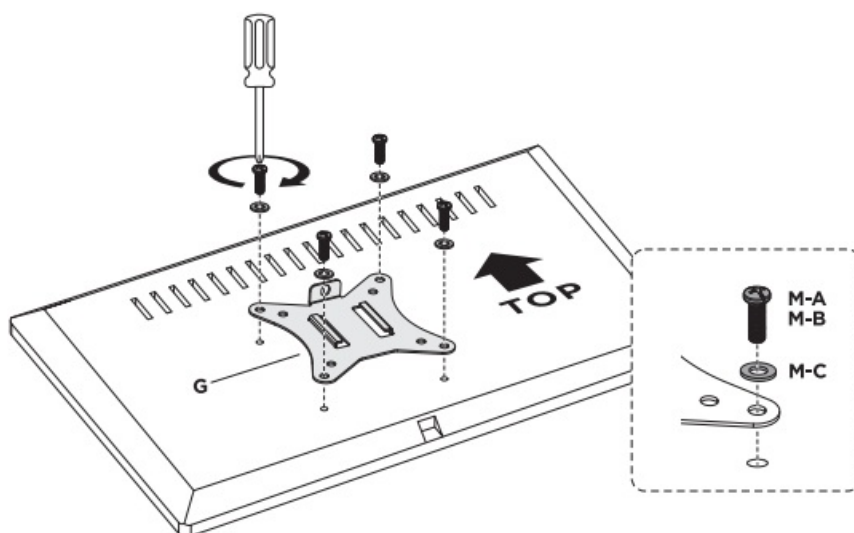




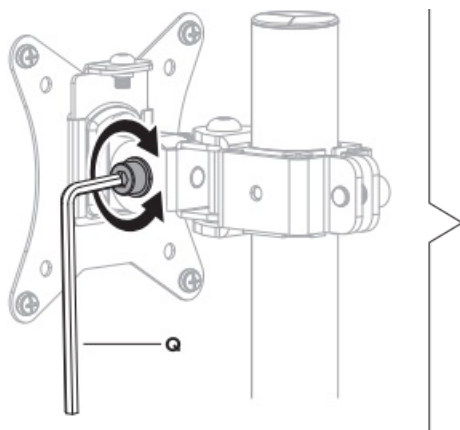
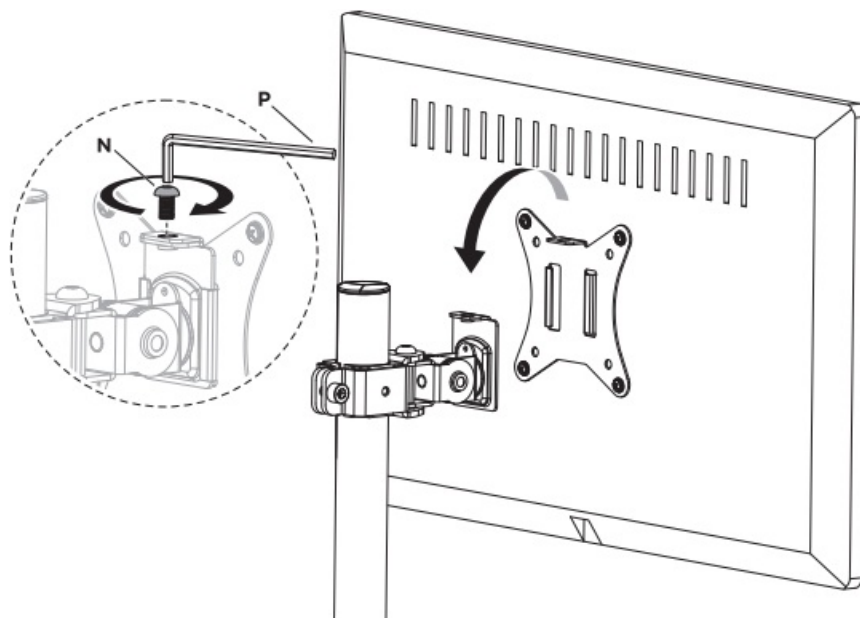
6



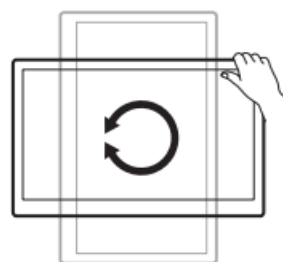
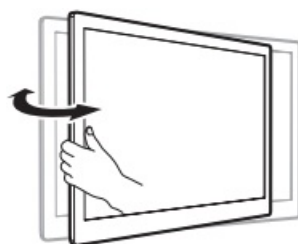
1. Too long
2. Too Short

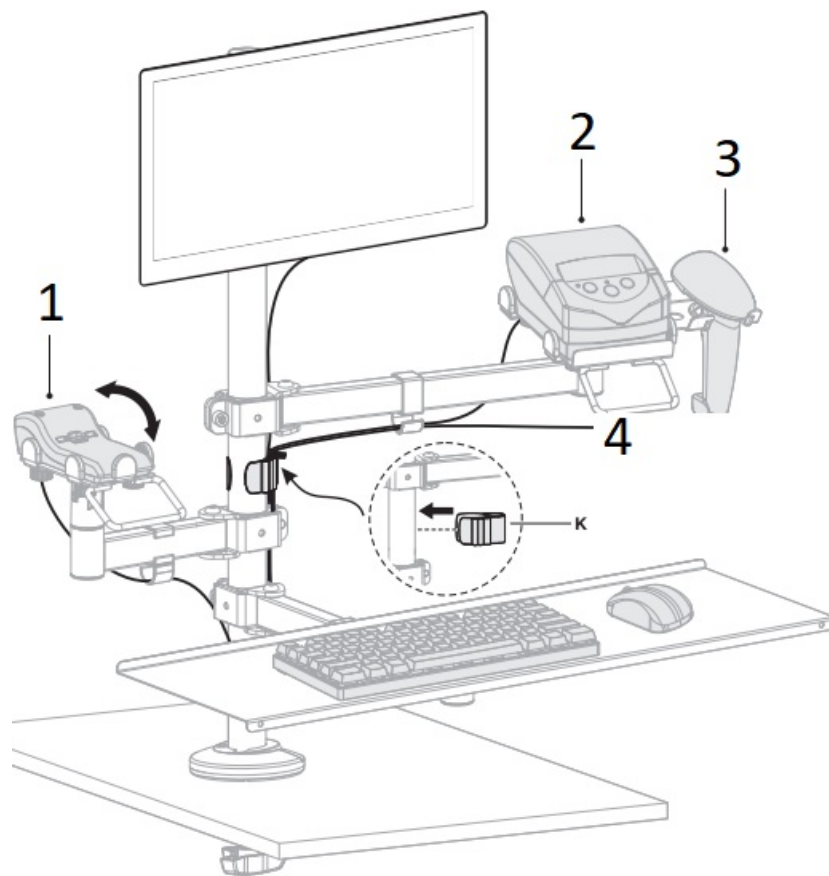


7



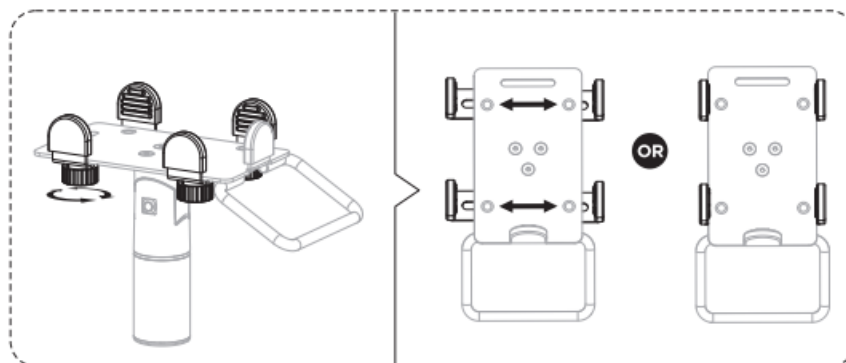
Note: If the display does not stop at your desired position, tighten the screws as shown.





1. Terminal holder
2. Printer holder
3. Scanner holder
4. Cable clip (K) can be adjusted by demands.

Width adjustment according to device.



IMPORTANT:

Failure to read, thoroughly understand, and follow all instructions can result in serious personal injury, damage to equipment, or voiding of factory warranty.

INSTRUCTIONS OF SAFETY AND WARNINGS:

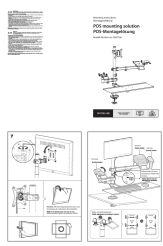
- Make sure that the mounting surface is strong enough to handle a mounted product and equipment.
- DO NOT EXCEED THE MAXIMUM LISTED WEIGHT CAPACITY.
- Always use an assistant or a mechanical lifting device to safely lift and position heavy products.
- Tighten screws firmly, but do not over tighten. Over tightening can cause product damage that greatly reduces

the holding power.

- Keep a clear area and distance from moving parts when using the product.
- Use only as intended. Never stand, hang or climb on the product.
- This product is intended for indoor use only.
- Any attempts to reconstruct the construction aren't allowed.
- This product may contain small items that could be a choking hazard if swallowed. Keep children away unless the product is intended for their use and all instructions and manuals are fully reviewed and understood by them.
- Check that the product is secure and safe to use at regular intervals (at least every three months).

Should you ever have any questions or feel you require help please contact your place of purchase for assistance.

Documents / Resources

	<p>SpeaKa SP-POS-100 POS Mounting Solution [pdf] Instruction Manual SP-POS-100 POS Mounting Solution, SP-POS-100, POS Mounting Solution, Mounting Solution</p>
--	--

References

- [User Manual](#)

Manuals+. Privacy Policy

This website is an independent publication and is neither affiliated with nor endorsed by any of the trademark owners. The "Bluetooth®" word mark and logos are registered trademarks owned by Bluetooth SIG, Inc. The "Wi-Fi®" word mark and logos are registered trademarks owned by the Wi-Fi Alliance. Any use of these marks on this website does not imply any affiliation with or endorsement.