



SPARKLEIOT Zigbee Smart Plug Outlet Mini Remote Voice Control User Manual

[Home](#) » [SPARKLEIOT](#) » SPARKLEIOT Zigbee Smart Plug Outlet Mini Remote Voice Control User Manual 

Zigbee Smart Plug Outlet
Mini Remote Voice Control
User Manual

Contents

- [1 Features](#)
- [2 Product Description:](#)
- [3 Indicator LED Description:](#)
- [4 How to reset the socket to the factory mode?](#)
- [5 How to connect the device to Samsung SmartThings hub?](#)
- [6 How to connect the device to PHILIPS hub?](#)
- [7 How to add Amazon Alexa and Google Assistant in the other Hub](#)
- [8 Documents / Resources](#)
- [9 Related Posts](#)

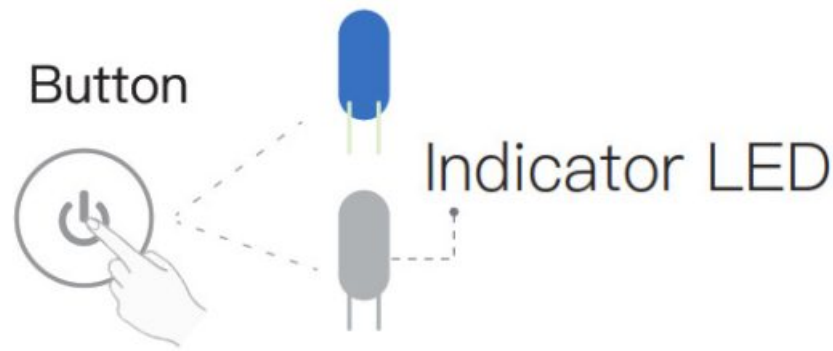
Features

Support to access to Samsung SmartThings hub, Amazon Echo Plus, Amazon Echo Show(2nd), Philips hub, eWeLink Hub or Zigbee 3.0 Hub. Don't need any Zigbee hub, directly support Amazon Echo Smart speaker to config the controller. After paired, you can use the Alexa App or Voice to control the devices.

Product Description:

Short press to power on/off the socket.

Long press for 5 seconds to reset the socket.



Indicator LED Description:

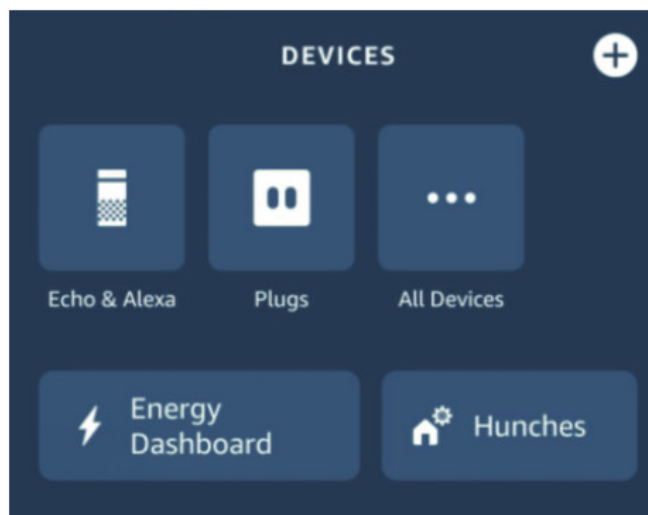
- Indicator LED Light-off means socket powers off.
- Indicator LED Light-on means socket powers on.
- Indicator LED blink (5 times per second), which means the socket is at configuration mode (factory mode).

How to reset the socket to the factory mode?

Long press the button for 5S, the indicator LED will blink, that means the socket already set to factory mode.

How to connect the device to Amazon Alexa?

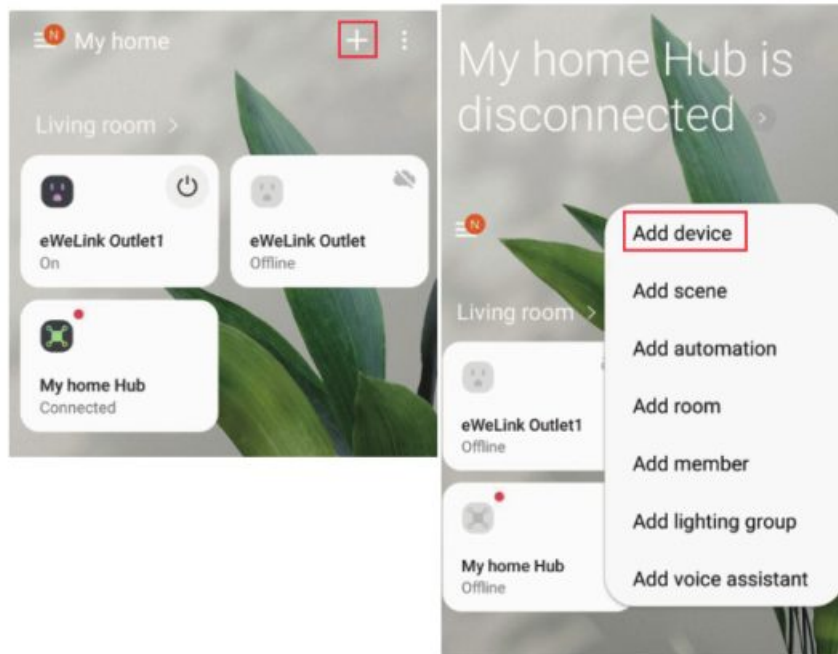
1. Power on the socket, and confirm that the socket is in the factory mode(LED Flash).
2. Ask, "Alexa, discover my devices."
3. Follows the voice prompt, after finish adding the smart plug, then check the added device in Amazon Alexa APP.



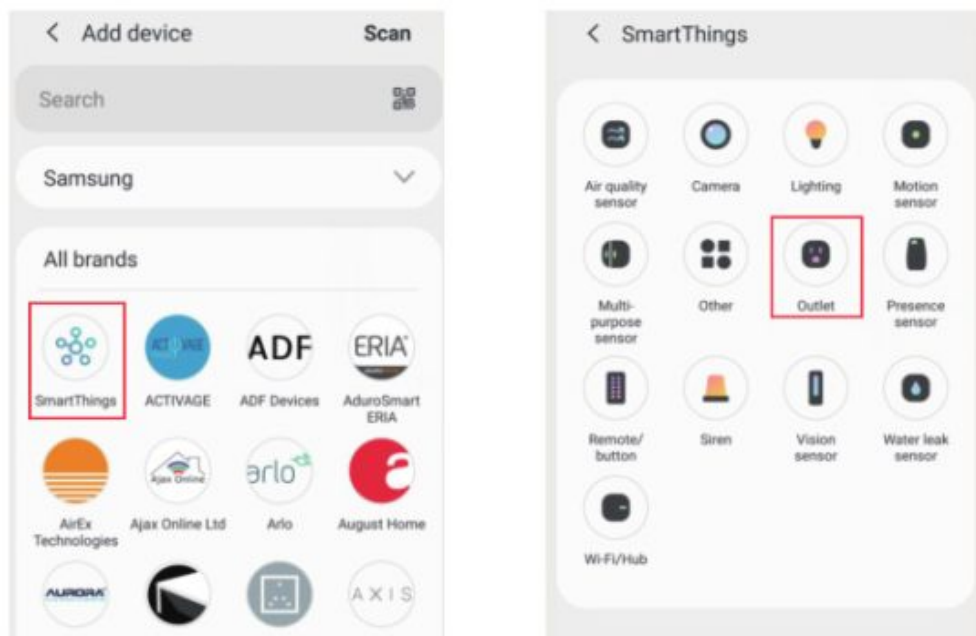
4. Ask, "Alexa, turn on first plug." This will turn the first plug on.
5. You can use amazon Alexa app to add group. Routines or modify device names such as bedroom plug. Then, you can use the Alexa app or voice to control the devices.

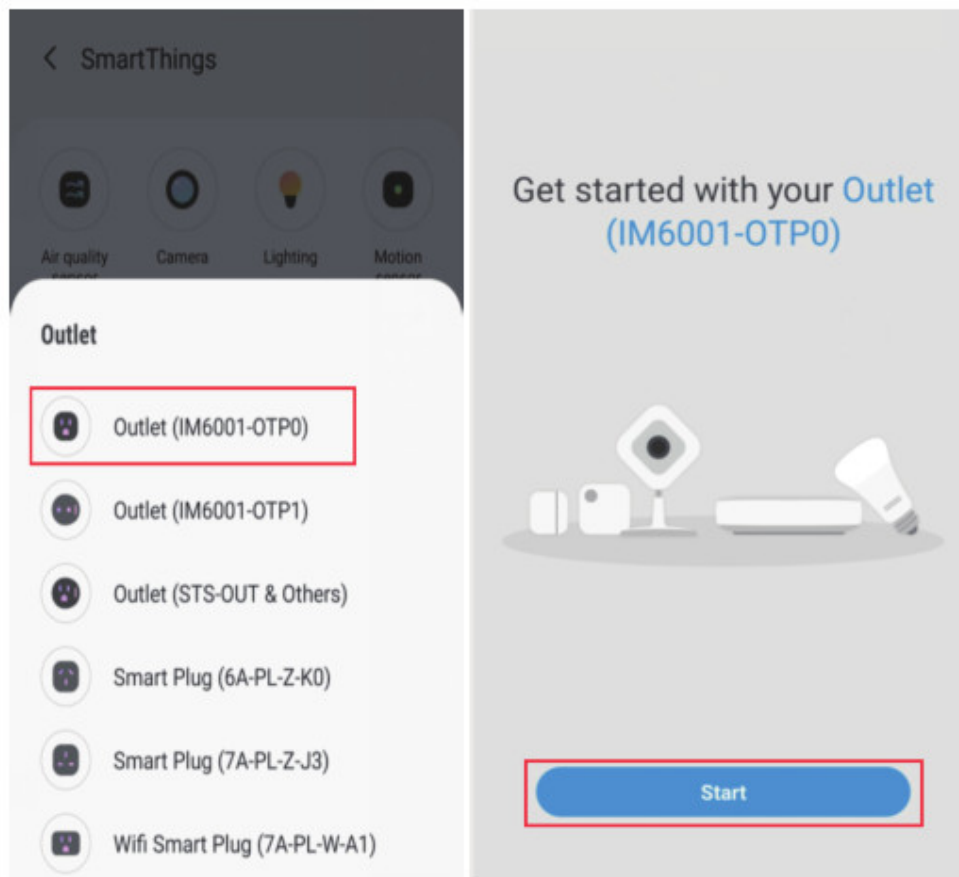
How to connect the device to Samsung SmartThings hub?

1. Power on the socket, and confirm that the socket is in the factory mode(LED Flash).
2. Click the upper right corner "+" to choose "Add device" in Samsung SmartThings APP.



3. Click “SmartThings” icon , go to SmartThings device list, then choose the correct Outlet (IM6001-OTP0).

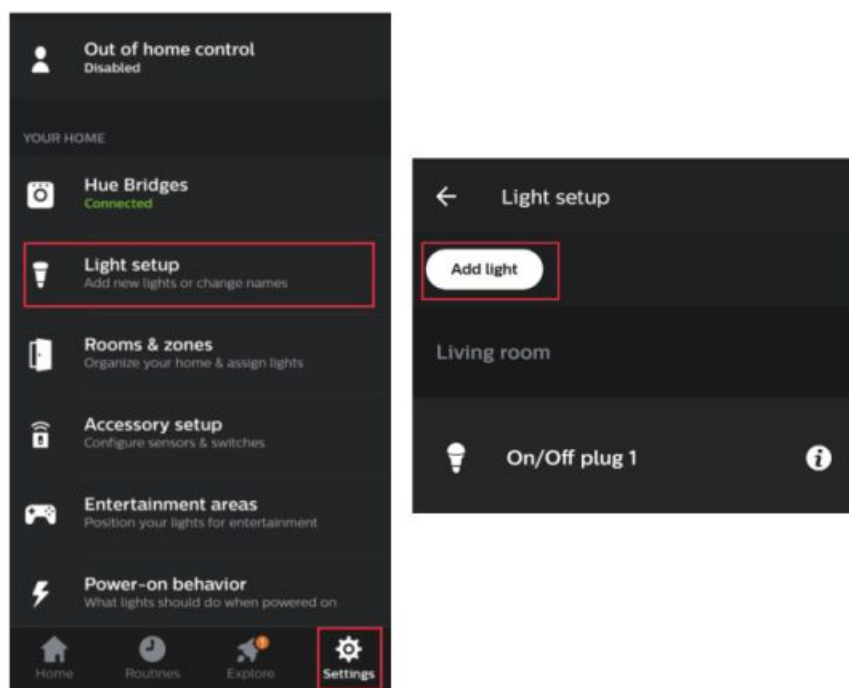




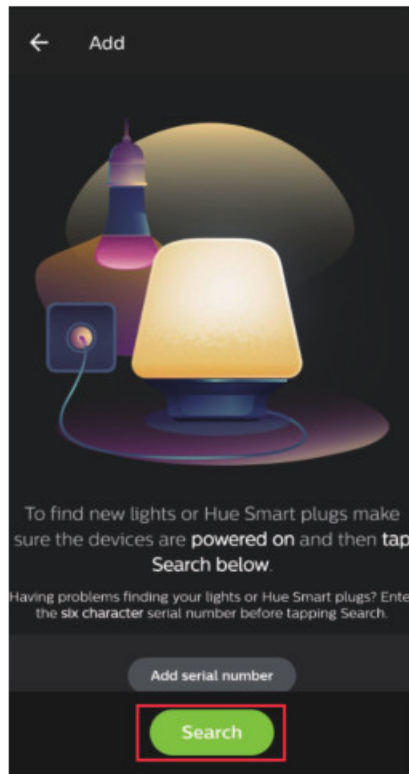
4. Please follow the instructions on the APP interface to add the device by following.

How to connect the device to PHILIPS hub?

1. Power on the socket, and confirm that the socket is in the factory mode (LED Flash).
2. Click the bottom right corner "Settings", to choose "light setup" in Philips HUB App.



3. Click the upper left corner "add light" and click "Search".




4. Please follow the instructions on the APP interface to add the device by followin.

How to add Amazon Alexa and Google Assistant in the other Hub

1. Please confirm whether the Hub can support Amazon Alexa and Google Assistant
2. If support, please refer to the corresponding Hub manual to add the devices.

Tech Support Email:
support@sparkleiot.com

Documents / Resources

	<p>SPARKLEIOT Zigbee Smart Plug Outlet Mini Remote Voice Control [pdf] User Manual Zigbee Smart Plug, Outlet Mini Remote Voice Control, Zigbee Smart Plug Outlet Mini Remote Voice Control</p>
---	--