



Sparklan M.2 WiFi Module Series User Manual

[Home](#) » [SparkLAN](#) » Sparklan M.2 WiFi Module Series User Manual 



WNFT-237ACN(BT) ' User's Manual

SparkLAN WNFT-237ACN(BT)
M.2 Module User's Manual

Preliminary Version
2018/10/09

SparkLAN communication, Inc.

8F., No. 257, Sec. 2, Tiding Blvd., Neihu District, Taipei City 11493, Taiwan

Tel.: +886-2-2659-1880. Fax: +886-2-2659-5538

www.SparkLAN.com

Contents

- 1 ENVIRONMENTAL
- 2 Installing the Wireless PCIe M.2 module
- 3 Un-installing the Wireless PCIe M.2 module
- 4 Installing the Bluetooth USB Module
- 5 Documents / Resources
 - 5.1 References
- 6 Related Posts

Operating

Operating Temperature: 0°C to +70 °C

Relative Humidity: 5-90% (non-condensing)

Storage

Temperature: Relevant Humidity: -40°C to +80°C (non-operating) 5-95% (non-condensing)

MTBF calculation

Over 150,000hours

Federal Communication Commission Interference Statement:

This equipment has been tested and found to comply with the limits for a Class B digital device, pursuant to part 15 of the FCC Rules. These limits are designed to provide reasonable protection against harmful interference in a residential installation. This equipment generates, uses and can radiate radio frequency energy and, if not installed and used in accordance with the instructions, may cause harmful interference to radio communications. However, there is no guarantee that interference will not occur in a particular installation. If this equipment does cause harmful interference to radio or television reception, which can be determined by turning the equipment off and on, the user is encouraged to try to correct the interference by one or more of the following measures:

- Reorient or relocate the receiving antenna.
- Increase the separation between the equipment and receiver.
- Connect the equipment into an outlet on a circuit different from that to which the receiver is connected.
- Consult the dealer or an experienced radio/TV technician for help.

Any changes or modifications not expressly approved by the party responsible for compliance could void your authority to operate the equipment.

RF exposure statements

This Transmitter must not be co-located or operating in conjunction with any other antenna or transmitter. This equipment complies with FCC RF radiation exposure limits set forth for an uncontrolled environment. This equipment should be installed and operated with a minimum distance of 20 centimeters between the radiator and your body or nearby persons.

CFR 47 FCC PART 15 SUBPART C (15.247) and SUBPART E (15.407) has been investigated. It is applicable to the modular transmitter.

The devices must be installed and used in strict accordance with the manufacturer's instructions as described in the user documentation that comes with the product.

This radio transmitter RYK-WNFT237ACNBT has been approved by Federal Communications Commission to operate with the antenna types listed below, with the maximum permissible gain indicated. Antenna types not included in this list that have a gain greater than the maximum gain indicated for any type listed are strictly prohibited for use with this device.

Unique antenna connector (IPEX) must be used on the Part 15 authorized transmitters used in the host product.

Antenna Type	Antenna Model	Maximum Gain (dBi)		Remark
		2.4 GHz	5GHz	
PCB	FML2.4W45A-160-MHF4L	3.13 dBi	4.94 dBi	

If the FCC identification number is not visible when the module is installed inside another device, then the outside of the device into which the module is installed must also display a label referring to the enclosed module. This exterior label can use wording such as the following: "Contains Transmitter Module FCC ID: RYKWNFT237ACNBT" Or "Contains FCC ID: RYK-WNFT237ACNBT"

The modular transmitter is only FCC authorized for the specific rule parts (i.e., FCC transmitter rules) listed on the grant, and the host product manufacturer is responsible for compliance to any other FCC rules that apply to the host not covered by the modular transmitter grant of certification. The final host product still requires Part 15 Subpart B compliance testing with the modular transmitter installed.

The final host manual shall include the following regulatory statement: FCC part 15.19 and 15.105.

Industry Canada statement:

This device complies with Industry Canada license-exempt RSSs. Operation is subject to the following two conditions:

1. This device may not cause interference, and
2. This device must accept any interference, including interference that may cause undesired operation of the device.

Caution:

1. The device for operation in the band 5150-5250 MHz is only for indoor use to reduce the potential for harmful interference to co-channel mobile satellite systems;
2. For devices with detachable antenna(s), the maximum antenna gain permitted for devices in the bands 5250-5350 MHz and 5470-5725 MHz shall be such that the equipment still complies with the e.i.r.p. limit;
3. For devices with detachable antenna(s), the maximum antenna gain permitted for devices in the band 5725-5850 MHz shall be such that the equipment still complies with the e.i.r.p. limits specified for point-to-point and non-point-to-point operation as appropriate; and

Radiation Exposure Statement:

This equipment complies with IC radiation exposure limits set forth for an uncontrolled environment. This equipment should be installed and operated with minimum distance 20cm between the radiator & your body.

This radio transmitter (IC: 6158A-237ACNBT has been approved by Industry Canada to operate with the antenna types listed below with the maximum permissible gain indicated. Antenna types not included in this list, having a gain greater than the maximum gain indicated for that type, are strictly prohibited for use with this device.

Antenna Type	Antenna Model	Maximum Gain (dBi)		Remark
		2.4 GHz	5GHz	
PCB	FML2.4W45A-160-MHF4L	3.13 dBi	4.94 dBi	

If the ISSED certification number is not visible when the module is installed inside another device, then the outside of the device into which the module is installed must also display a label referring to the enclosed module. This exterior label can use wording such as the following: "Contains IC: 6158A-237ACNBT".

Manual Information To the End User:

The OEM integrator has to be aware not to provide information to the end user regarding how to install or remove this RF module in the user's manual of the end product which integrates this module. The end user manual shall include all required regulatory information/warning as show in this manual.

Must use the device only in host devices that meet the FCC/ISED RF exposure category of mobile, which means the device is installed and used at distances of at least 20cm from persons.

The end user manual shall include FCC Part 15 /ISED RSS GEN compliance statements related to the transmitter

as show in this manual.

Host manufacturer is responsible for compliance of the host system with module installed with all other applicable requirements for the system such as Part 15 B, ICES 003.

Host manufacturer is strongly recommended to confirm compliance with FCC/ISED requirements for the transmitter when the module is installed in the host. Must have on the host device a label showing Contains FCC ID: RYK-WNFT237ACNBT, Contains IC: 6158A-237ACNBT

The use condition limitations extend to professional users, then instructions must state that this information also extends to the host manufacturer's instruction manual.

If the end product will involve the Multiple simultaneously transmitting condition or different operational conditions for a stand-alone modular transmitter in a host, host manufacturer have to consult with module manufacturer for the installation method in end system.

Installing the Wireless PCIe M.2 module

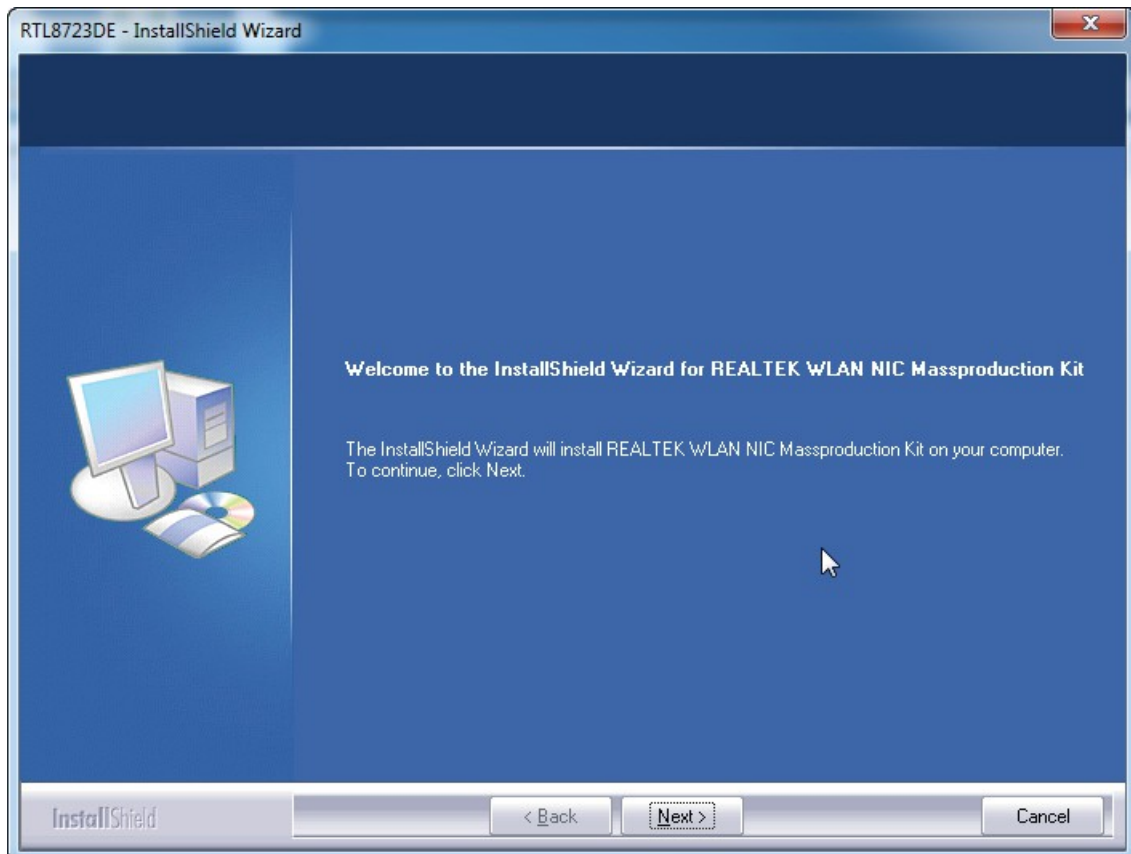
Software

Before you proceed with the installation, please notice following descriptions.

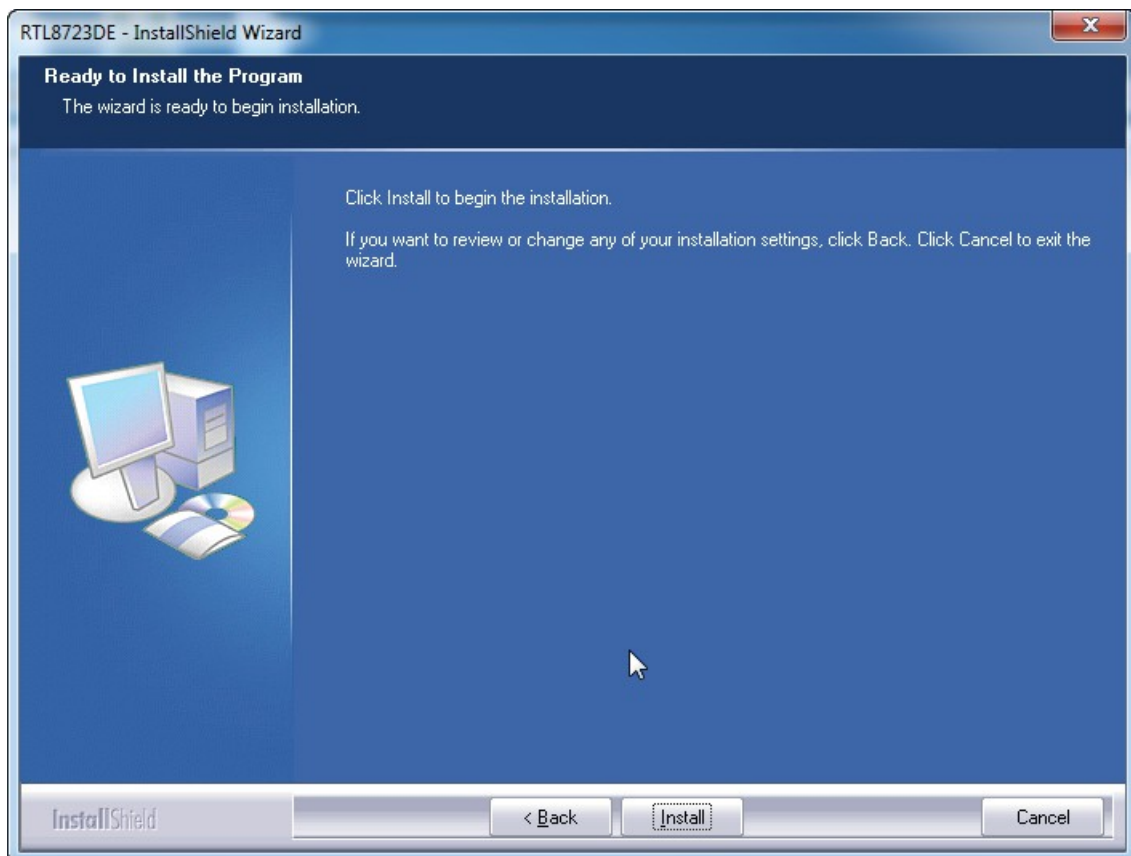
Note1: The following installation was operated under Windows 7.

Note2: If you have installed the WLAN driver & utility before, please uninstall the old version first.

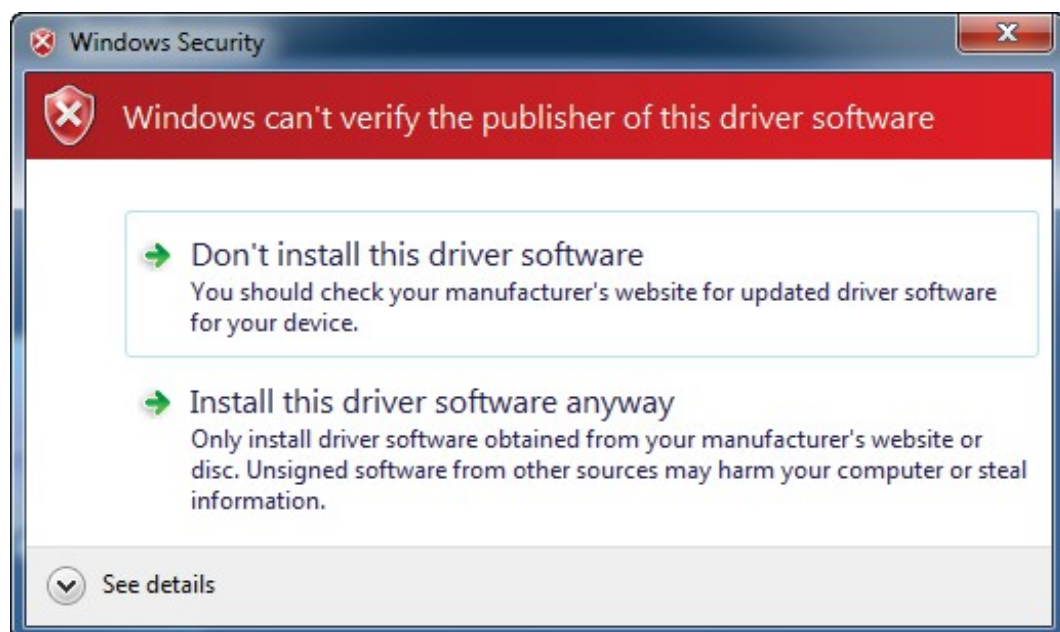
A. Execute the "setup.exe", Click "Next" to process the installation



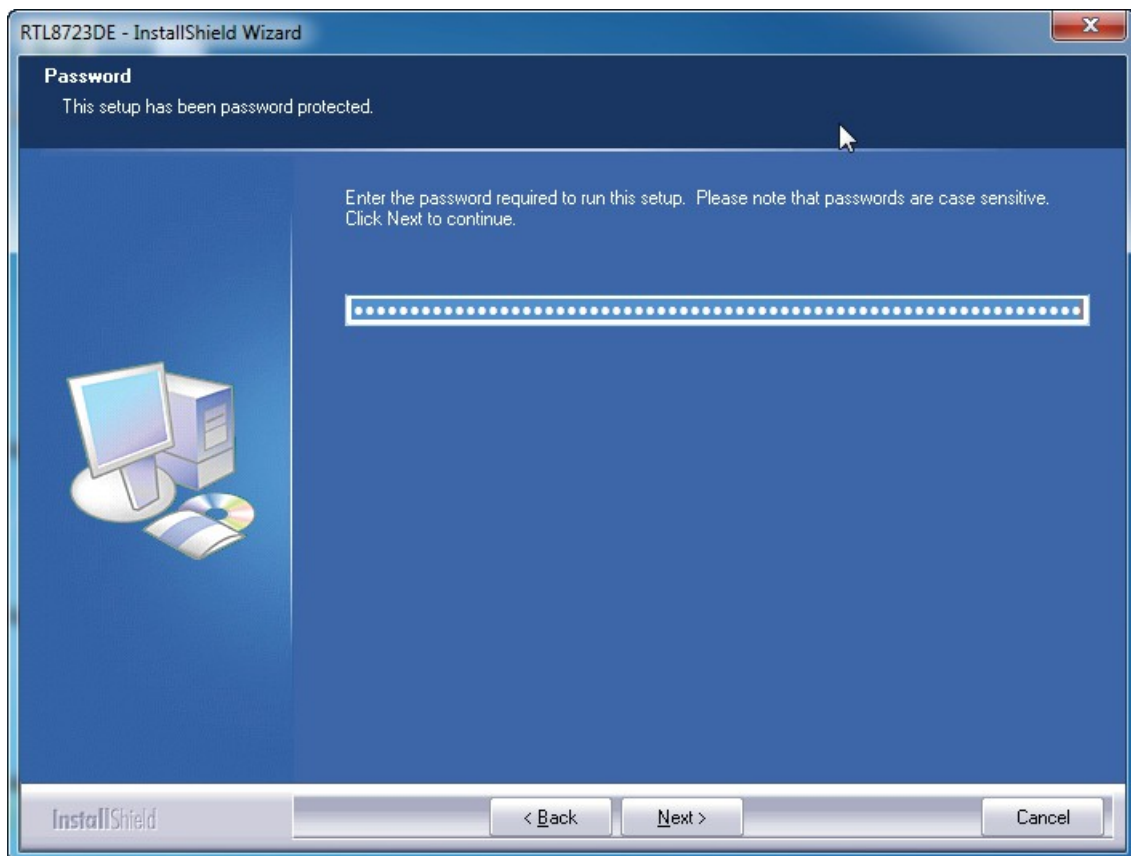
B. Click "Install" to process the installation



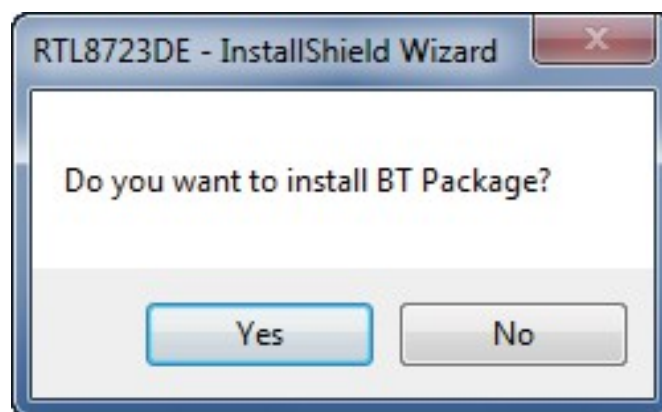
C. Click Install this driver software anyway



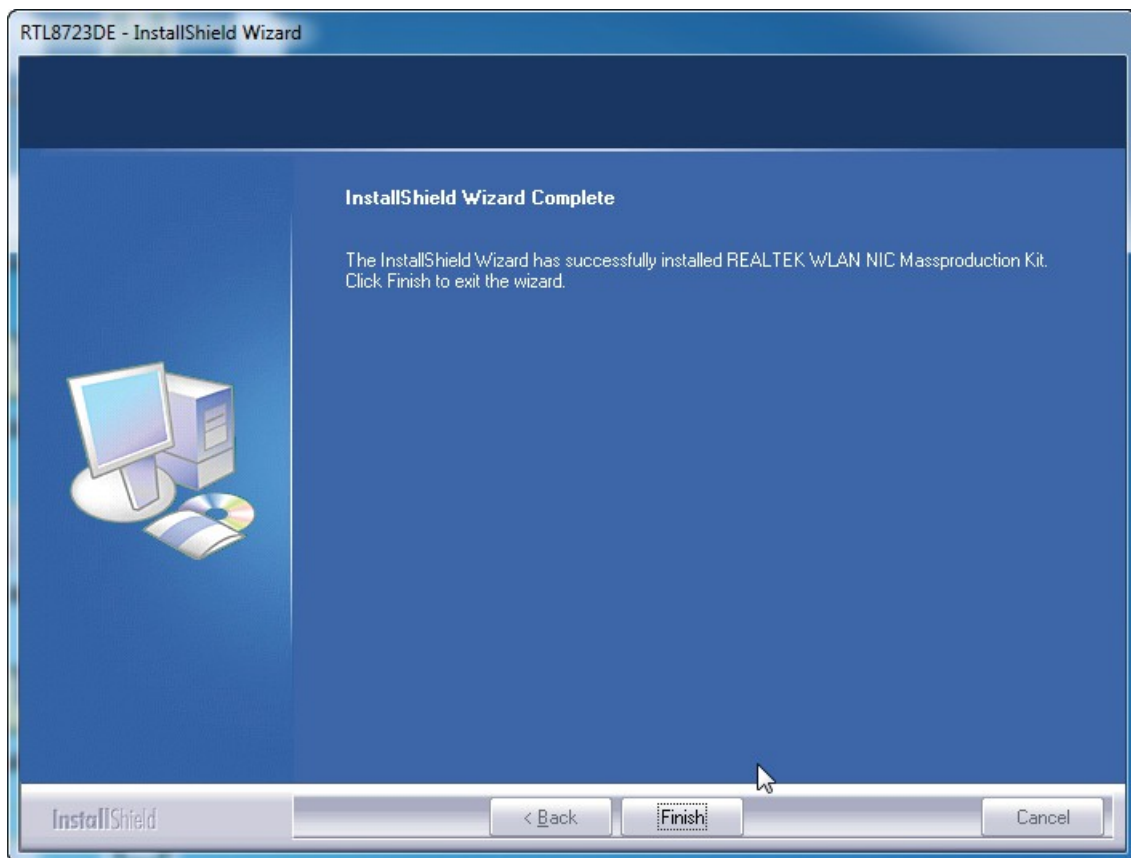
D. After step "C" please press Next button.



E. Please click "YES" to install BT package.



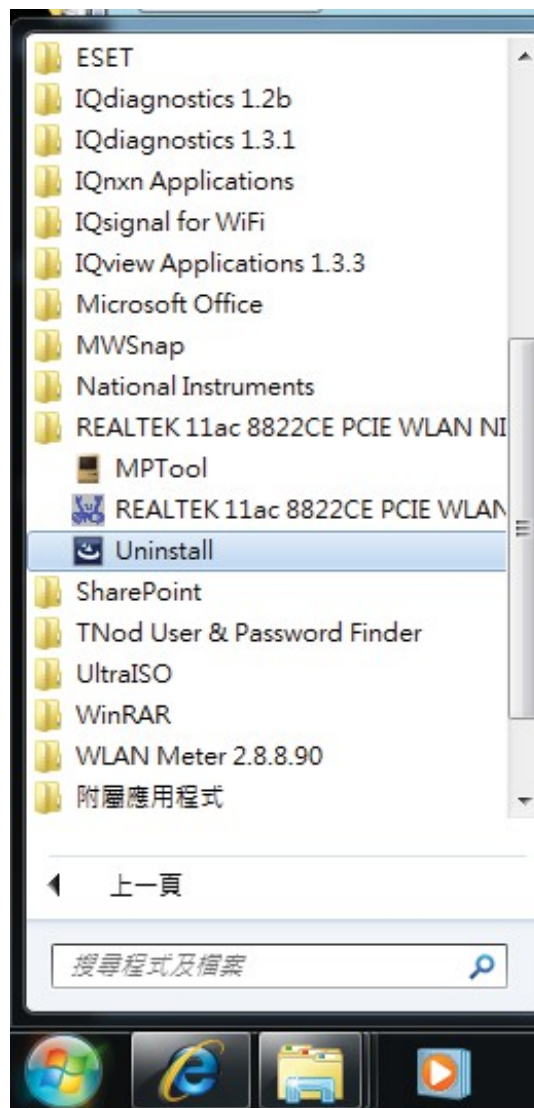
J. Press Finish button to complete the install process



Un-installing the Wireless PCIe M.2 module

Software

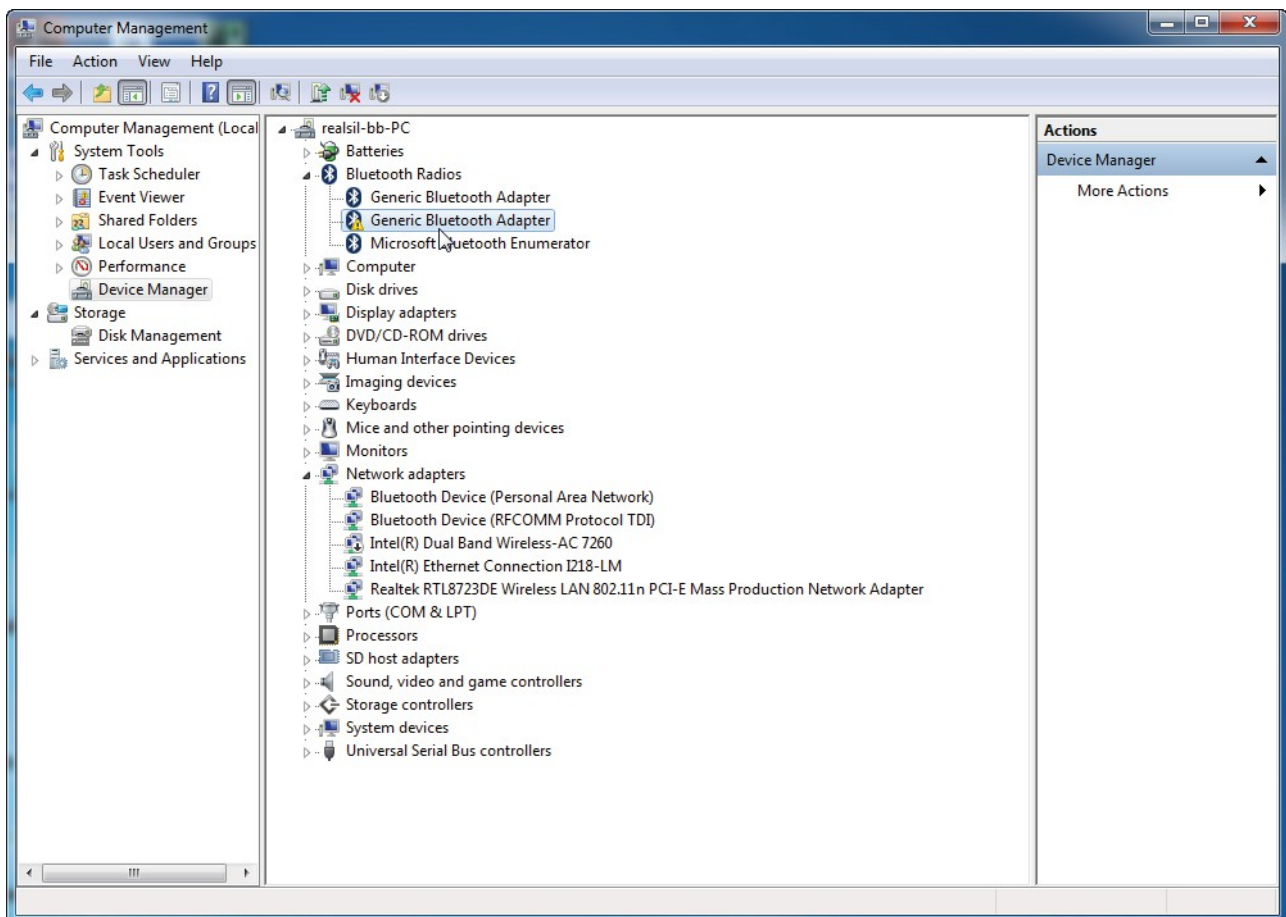
A. Uninstall the WNFT-237ACN(BT) WLAN Driver from "Start" → "All Programs" → "REALTEK 11ac 8822CE PCI-E WLAN NIC Mass-production kit" Please click "Uninstall" to remove WNFT-237ACN(BT) WLAN, driver.



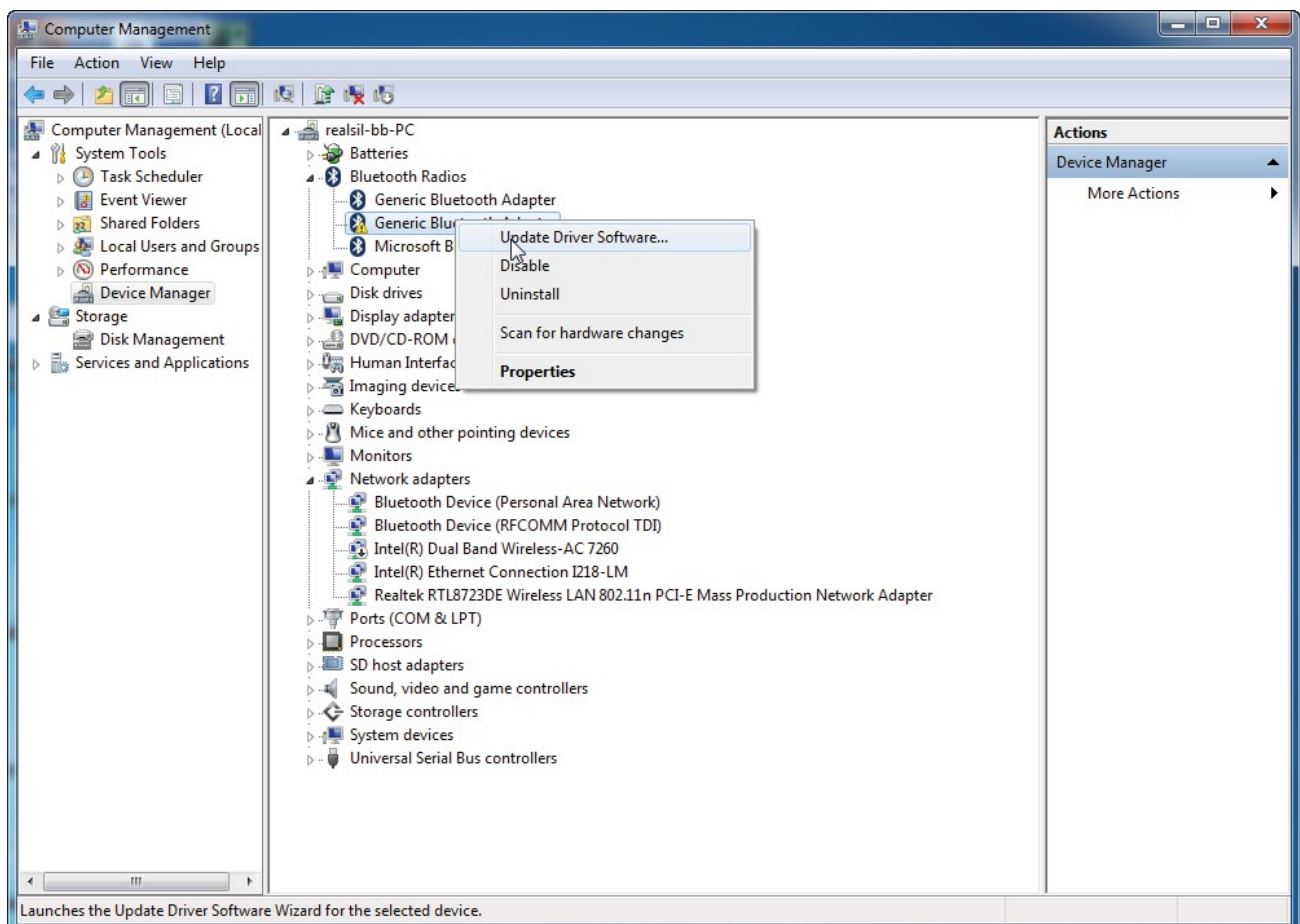
Installing the Bluetooth USB Module

Software

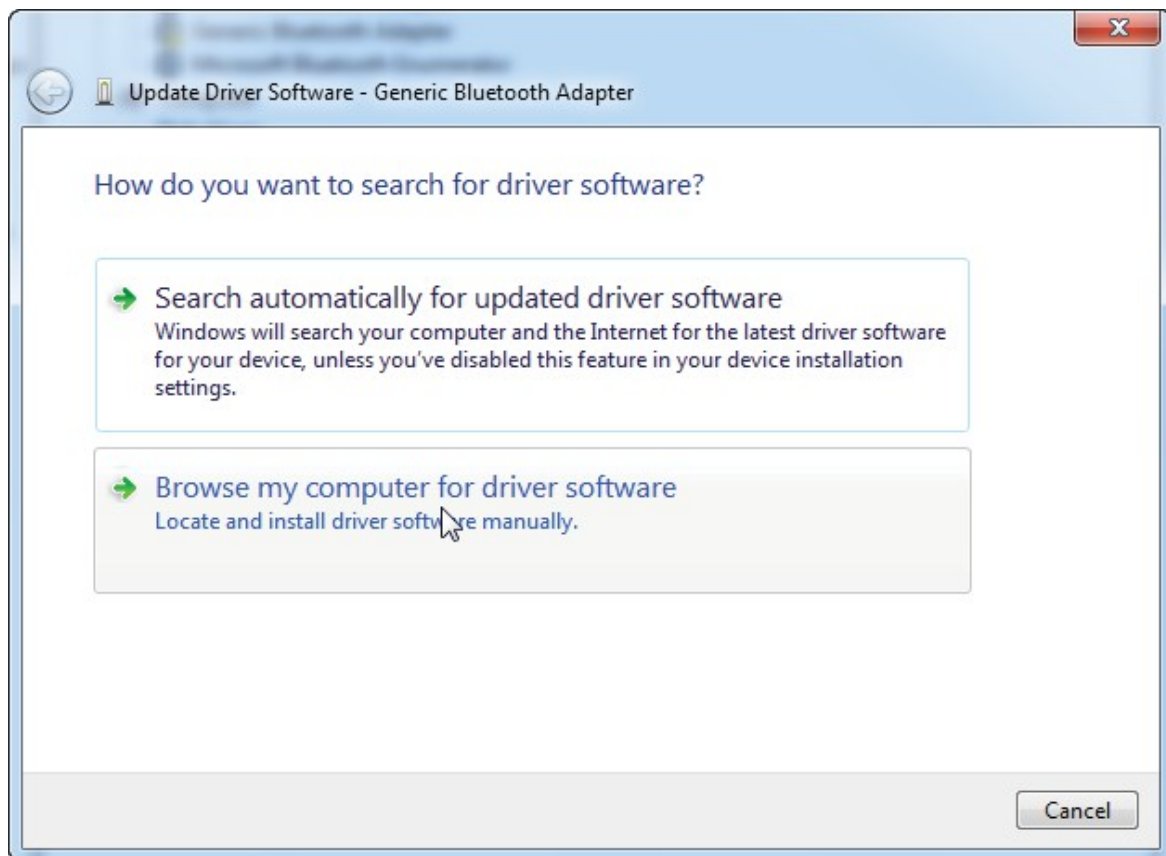
- A. Insert the M.2 card into system connector.
- B. Boot on system then the “Generic Bluetooth Adapter” device will show up in device manager.



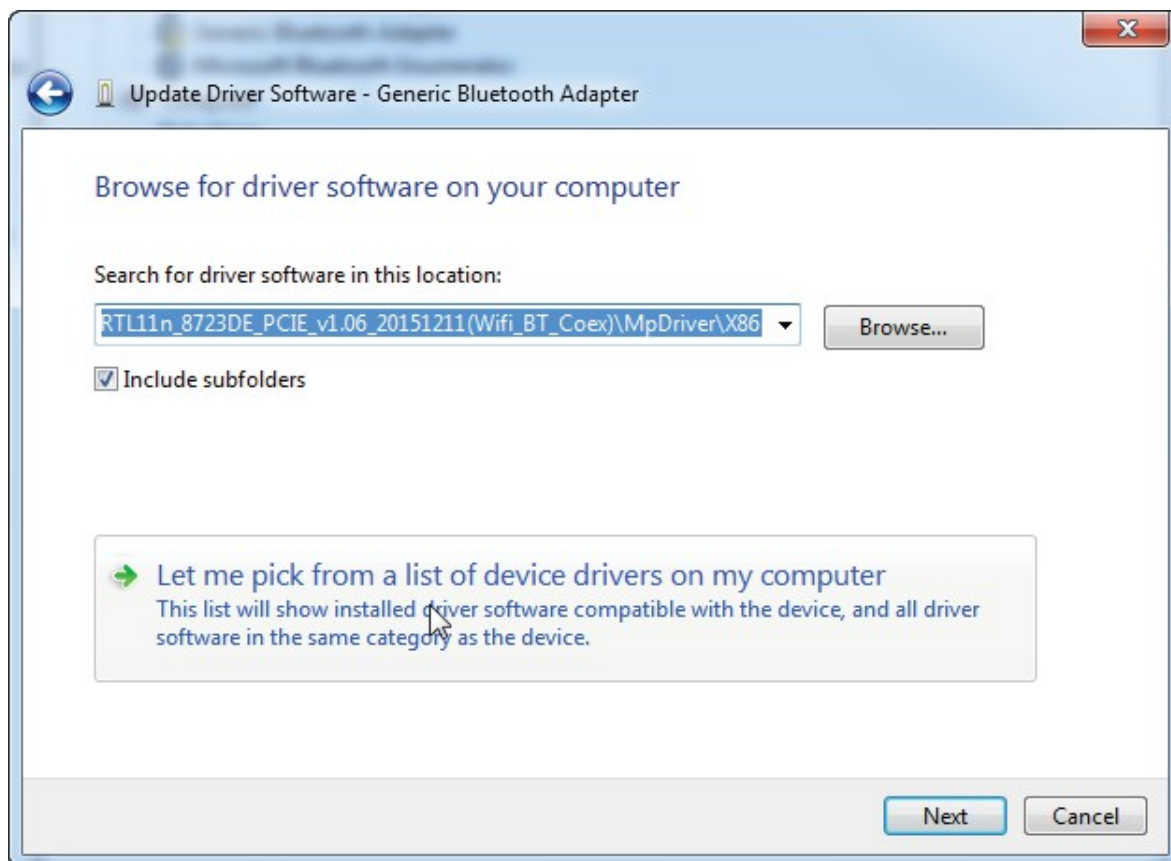
C. Click right button on “RT Bluetooth Radio” and select “Update Driver”.



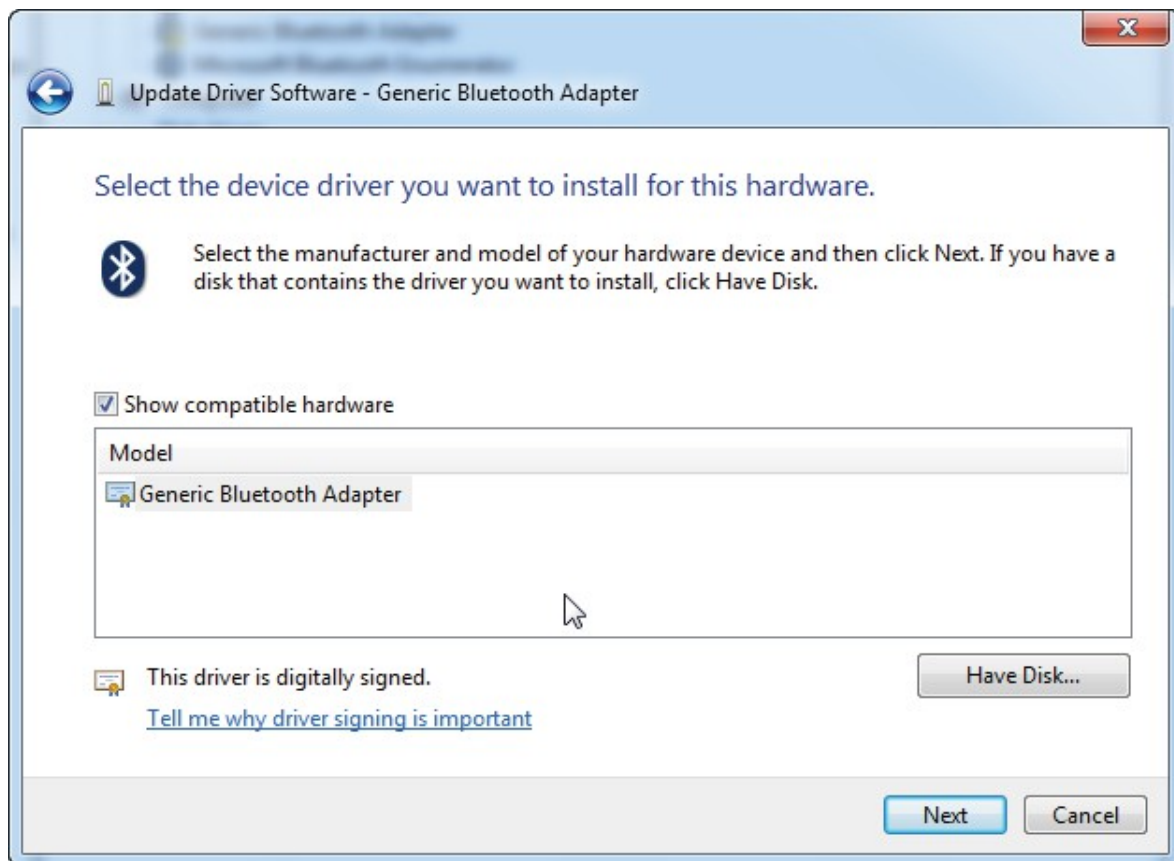
D. After select “Update Driver Software ” then the Hardware Update Wizard will pop up, please select “Browse my computer for driver software” and press Next button.



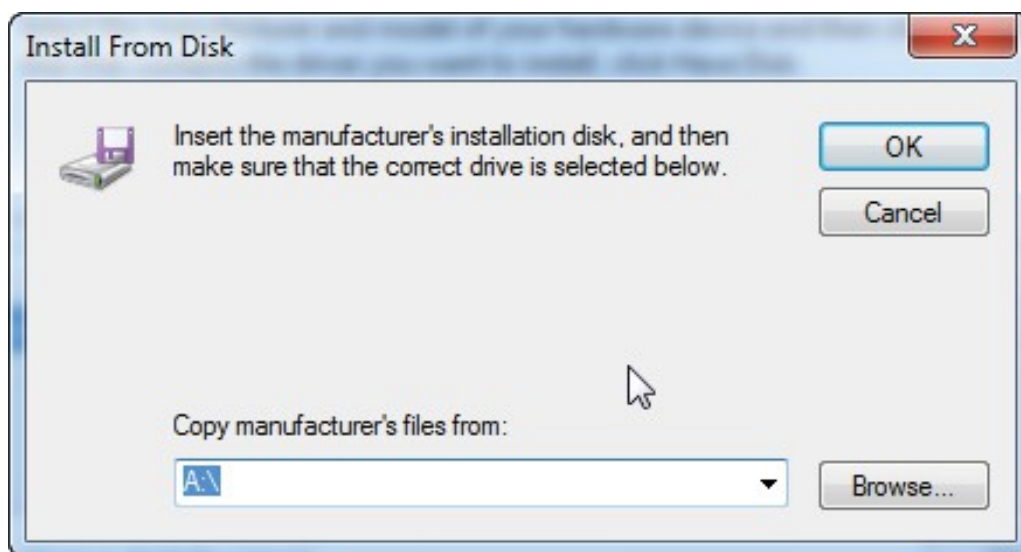
E. After step "D" please Select "Let me pick from a list of device drivers on my computer ".

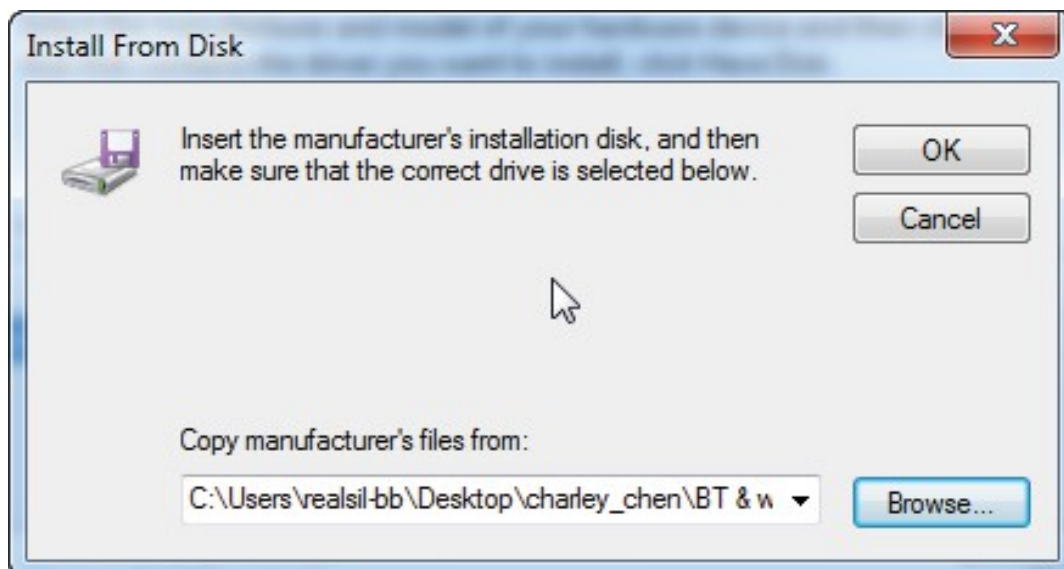
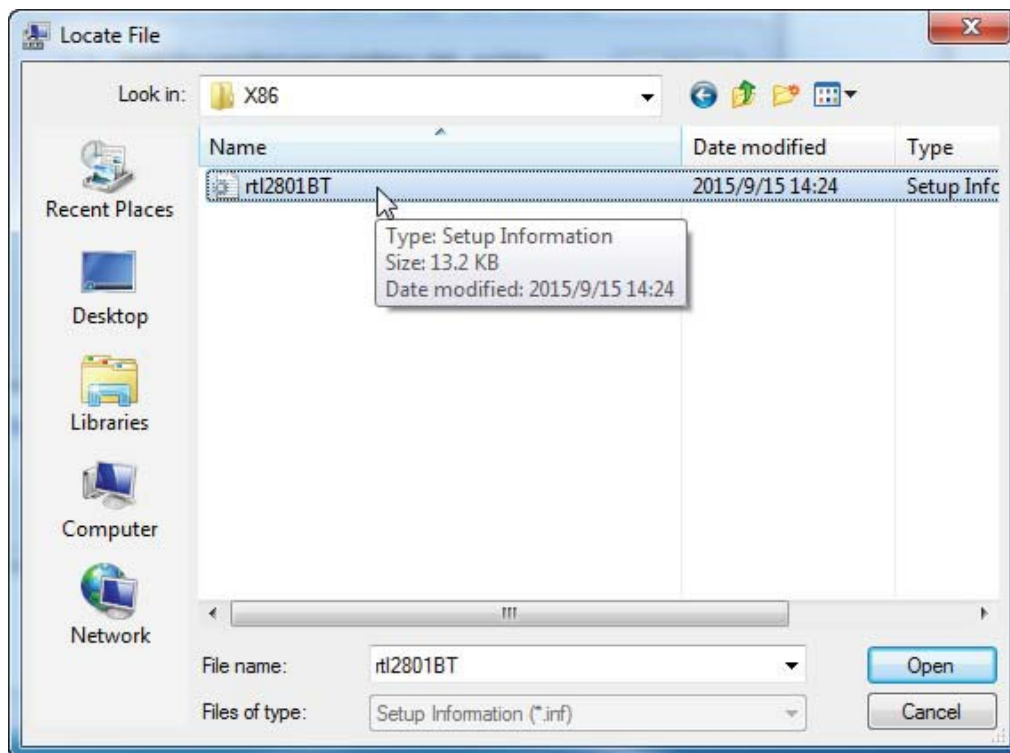


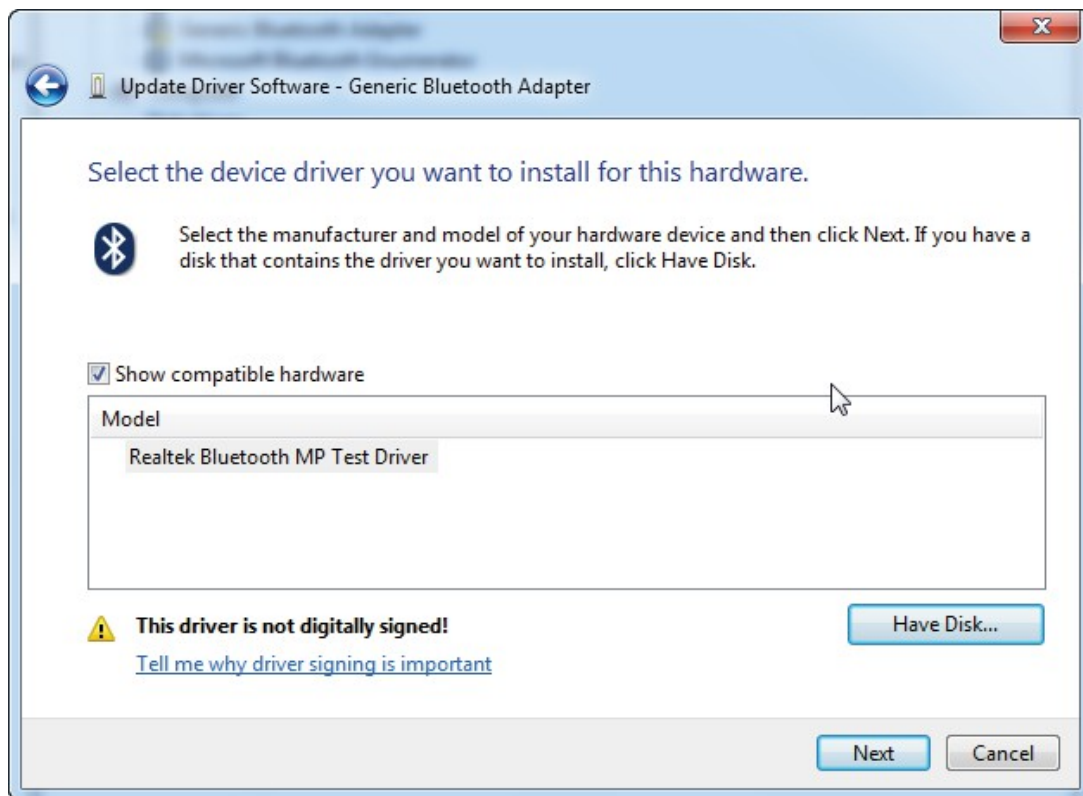
F. Finish step "E" then select "Have Disk.."



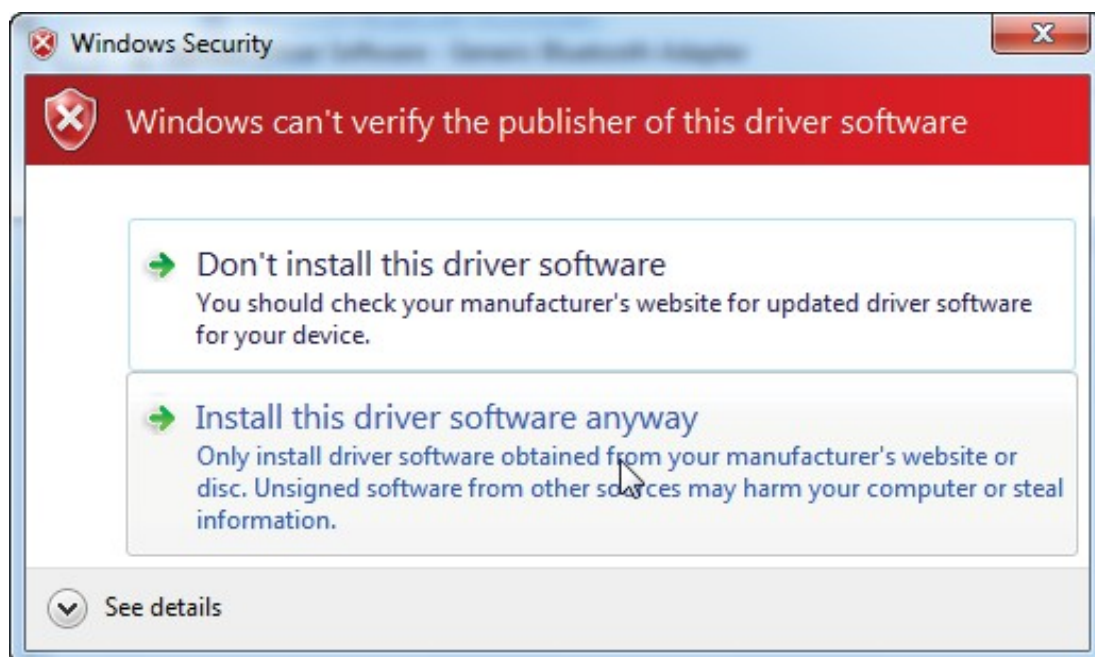
G. Now select browse to find the driver for device and press Next button.(The driver's locate is the same with WiFi driver)



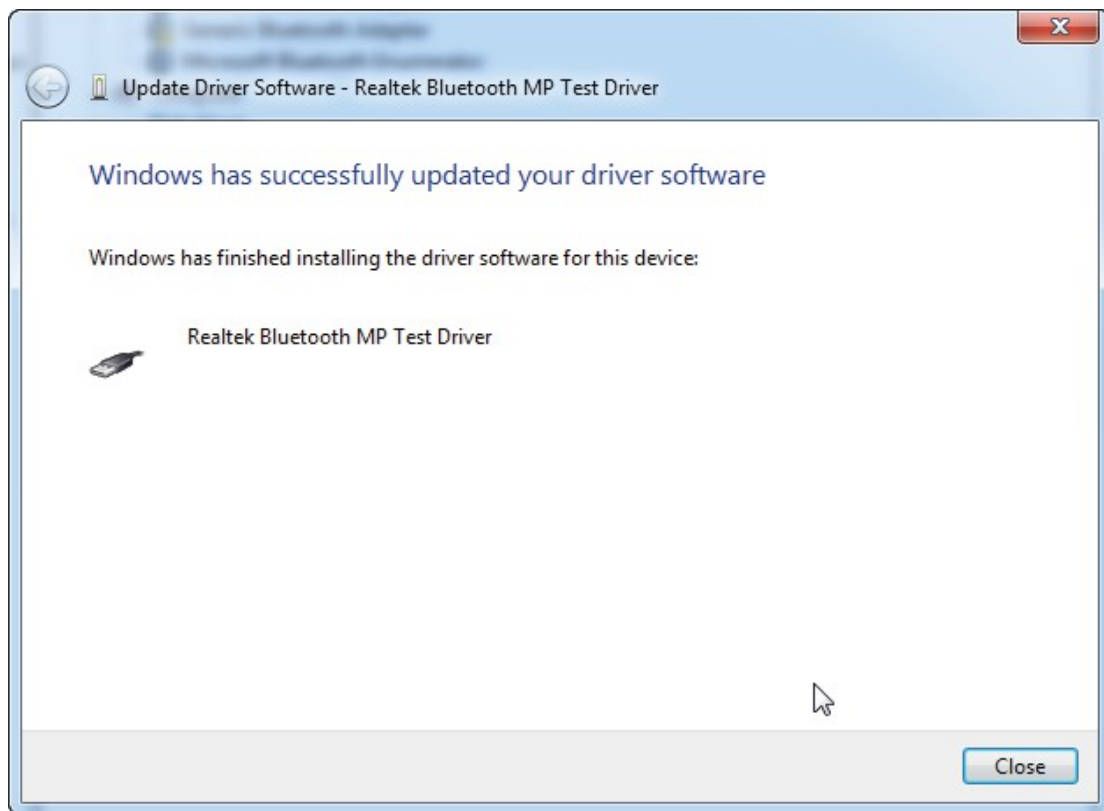





H. Then click "Install this driver software anyway" to continue.



I. Press close button to complete the install process and you can see the Driver will be show up in Device Manager.



Documents / Resources

	<p>Sparklan M.2 WiFi Module Series [pdf] User Manual WNFT237ACNBT, RYK-WNFT237ACNBT, M.2, WiFi Module Series</p>
---	--

References

- [IoT Wireless Module Solutions | IoT and M2M Experts in Wireless Embedded Wifi](#)