



# Spark IoT Bridge Fridge Monitoring Starter Kit User Guide

[Home](#) » [Spark](#) » Spark IoT Bridge Fridge Monitoring Starter Kit User Guide 

## Contents

- [1 Spark IoT Bridge Fridge Monitoring Starter Kit](#)
- [2 Product Information](#)
- [3 Product Usage Instructions](#)
- [4 Activate and login into your account](#)
- [5 Add users](#)
- [6 Dashboard](#)
- [7 Create rules & alerts Efento devices](#)
- [8 Create a report](#)
- [9 Documents / Resources](#)
  - [9.1 References](#)
- [10 Related Posts](#)



**Spark IoT Bridge Fridge Monitoring Starter Kit**



## Product Information

### Welcome

Welcome to Spark IoT Bridge. This Fridge Monitoring Starter Kit allows you to monitor and manage your fridge using IoT technology. It provides features such as user roles, account activation, user management, dashboard customization, and report creation.

### User Roles Overview

There are four user roles available:

1. Account owner – Has full access to all IoT Bridge features, including user management.
2. Admin – Has access to user management, device configuration, alerts and reports management.
3. Contributor – Has access to device configuration, alerts and reports management.
4. Viewer – Can receive reports and alerts, and respond to alerts.

## Product Usage Instructions

### Activate and Login into your account

1. Check your email for an activation link from [admin@iot.spark.co.nz](mailto:admin@iot.spark.co.nz) . If not found in the Inbox, check the Spam/Junk folder.
2. Click on the activation link and create a new password when prompted. If you lost the activation email, go to [www.iotbridge.nz/app](http://www.iotbridge.nz/app) and click on “Forgot your password?”
3. Review and accept the Spark Privacy Policy, then click Next to complete account activation.

### Add Users

1. Login to IoT Bridge and click on Users in the left menu. Click Create User.
2. Select the Role (Admin, Contributor, Viewer, or Subscriber) and fill out the new user's details. Click Next.
3. Review the details and click Confirm. Click Edit if you need to change the details.
4. Click Back to Users.

## **Dashboard**

The IoT Bridge Dashboard is best viewed on a desktop PC, laptop, or tablet.

1. Login to IoT Bridge and click Dashboard.
2. To add a widget, select +.
3. Select the desired widget and drag and drop it onto the dashboard.
4. For Measure widget, select a measure and up to 8 devices. Click Select Devices.
5. Select a Measure and devices, then click Confirm.
6. Repeat the above steps to add more widgets.
7. To change the Dashboard name, click First Dashboard, type the new name, and click the tick to confirm.
8. All Done.

## **Welcome**

### **Welcome to Spark IoT Bridge**

As your first step, please activate your account, login to IoT Bridge and check that it has your correct contact details. See instructions below for each step.

### **The account type you have been given is one of the following:**

- **Account owner**

If you are the first user on your company's IoT Bridge account, you have been given Super Admin rights in IoT Bridge. As a Super Admin you have the full Admin rights to your company's account. Note your Super Admin account is not removable or editable by any other IoT Bridge users from your Company, including Administrators. Once you have logged in and checked your account details, you should set up additional user accounts for your company's IoT Bridge. See instructions below. You can also begin setting up Devices once they have been couriered to you.

- **Admin**

As an admin you have full access to all IoT Bridge features. This is the only role besides Super Admin that has access to user management, including assigning user roles and group memberships.

- **Contributor**

As a contributor you have access to device configuration, and the management of alerts and reports, and management of other user accounts.

- **Viewer**

You can receive reports and alerts, as well as respond to alerts that require action on your behalf. Check the Notification Management section of My Account to see which Alerts you're subscribed to.

- **Subscriber**

You can receive reports and also you can receive and respond to current alerts.

- **Next Step**

Please familiarise yourself with IoT Bridge functions that are described below. Don't be afraid to experiment

and try various functions.

## Activate and login into your account

1. Check your email for an activation link you would've received from [admin@iot.spark.co.nz](mailto:admin@iot.spark.co.nz).

Check your Spam/Junk folder if you cannot find it in your Inbox.



### Welcome.

As part of your organisation's adoption of a Spark IoT Monitoring solution, you have been identified as someone who needs user access to IoT Bridge. IoT Bridge is the central dashboard where you can get the timely data you need from the IoT connected devices.

To activate your account please [click here](#) and follow the instructions.

To learn more about Spark IoT Bridge please read the [Quick Start Guide](#), or visit our [Help & Support Centre](#).

If you are unsure that you should be receiving this email, please contact your manager or your organisation's IT team.


Thanks,

The Spark IoT Bridge team.

2. Once you click the activation link, you will be asked to create a new password.


**Lost the activation email? Go to [www.iotbridge.nz/app](http://www.iotbridge.nz/app) click on "Forgot your password?"**

3. Review and accept the Spark Privacy Policy and click Next to complete account activation.





# IoT Bridge

## Activate your account

Email 

clickyngl@gmail.com

Password 

Confirm Password 

**Password must:**

- ☒ be between 8 and 64 characters
- ☒ include a lowercase letter
- ☒ include an uppercase letter
- ☒ include a number or special symbol


☒ I agree to [Spark Privacy Policy](#)

**Next**

## Add users

1. Log in to IoT Bridge and click on Users in the menu on the left.

Click Create User.



Dashboard

Devices

Groups

Alerts

Reports


**Users**

## Users

Manage User access to your IoT Bridge Organisation


**ALL** Admin Contributor Viewer Subscriber

Q Search users by name, email or mobile

 Create User

Nothing here yet ...

2. Select the Role which is going to be assign to the user (Admin, contributor, viewer or a subscriber) and fill out the new user's details and click Next



[Dashboard](#)  
[Devices](#)  
[Groups](#)  
[Alerts](#)  
[Reports](#)  
**[Users](#)**

[POORNI NAKKAWITA](#)  
[My Account](#)  
[Help](#)

<

Create User

Invite a person to your IoT Bridge Organisation.

ROLE  
Subscriber

Can receive and respond to current alerts, can receive reports.

FIRST NAME  
Megan


LAST NAME  
Bowman

EMAIL  
megan.bowman@example.com

MOBILE NUMBER (OPTIONAL)  
[REDACTED]

Next

3. Review the details and click Confirm (click Edit if you need to change the details)



[Dashboard](#)  
[Devices](#)  
[Groups](#)  
[Alerts](#)  
[Reports](#)  
**[Users](#)**

[POORNI NAKKAWITA](#)  
[My Account](#)  
[Help](#)

<

Create User

Invite a person to your IoT Bridge Organisation.

ROLE  
Subscriber

FIRST NAME  
Megan

LAST NAME  
Bowman

EMAIL ADDRESS  
megan.bowman@example.com

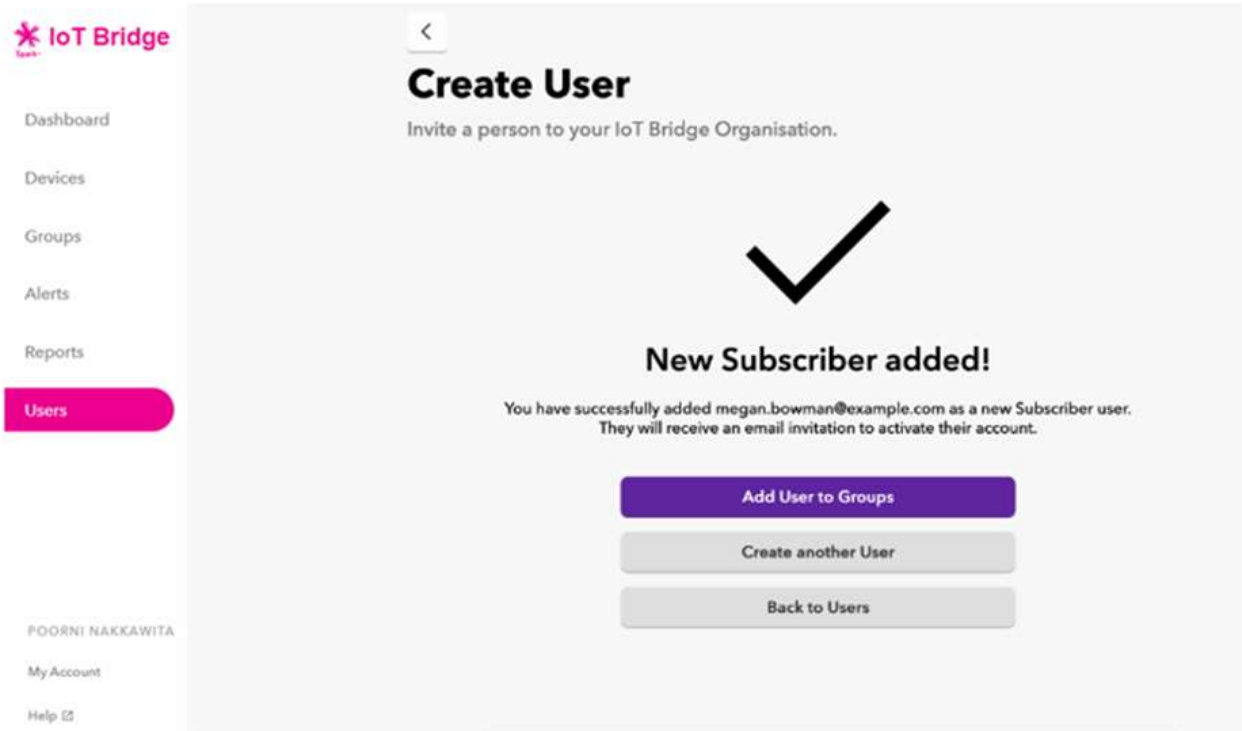
MOBILE NUMBER (OPTIONAL)  
[REDACTED]

The new User will receive an activation link to their email address.

Confirm

Edit

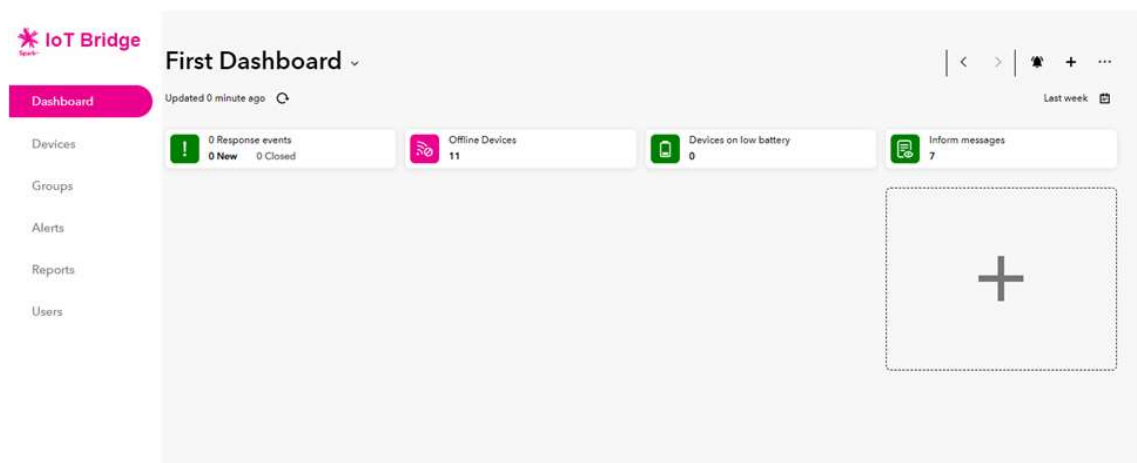
4. Click Back to Users.



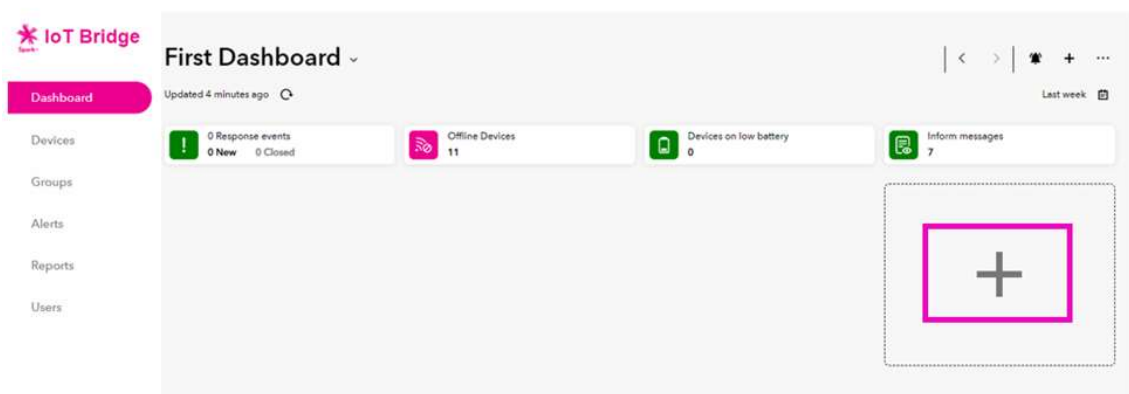
## Dashboard

The IoT Bridge Dashboard is best viewed on a desktop PC, laptop, or a tablet.

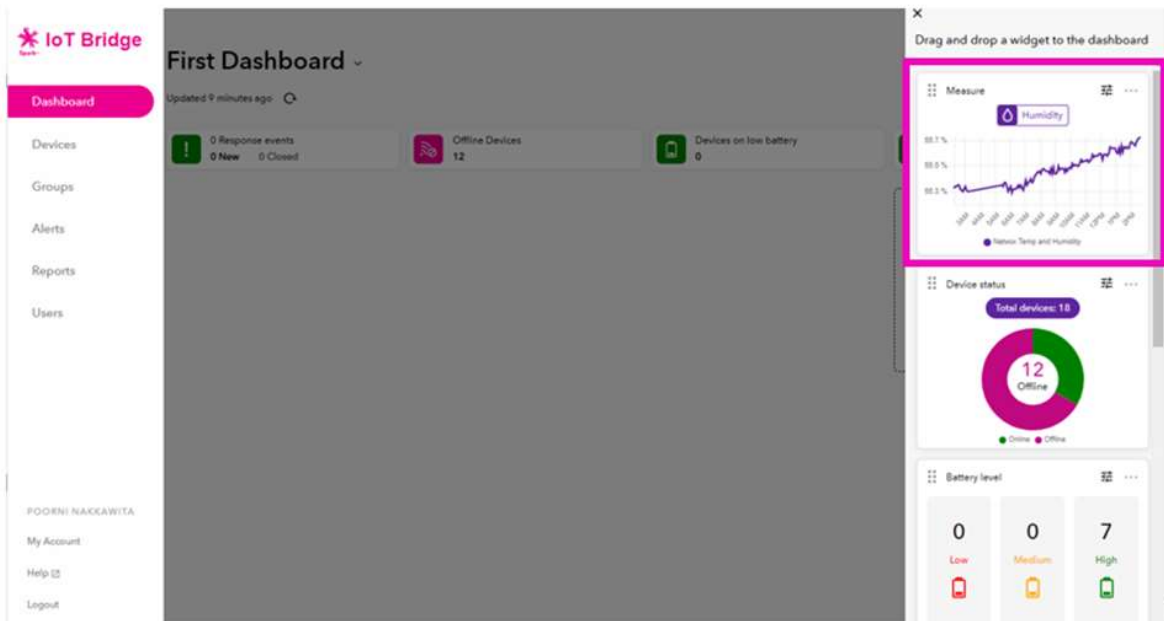
1. Log in to IoT Bridge and click Dashboard



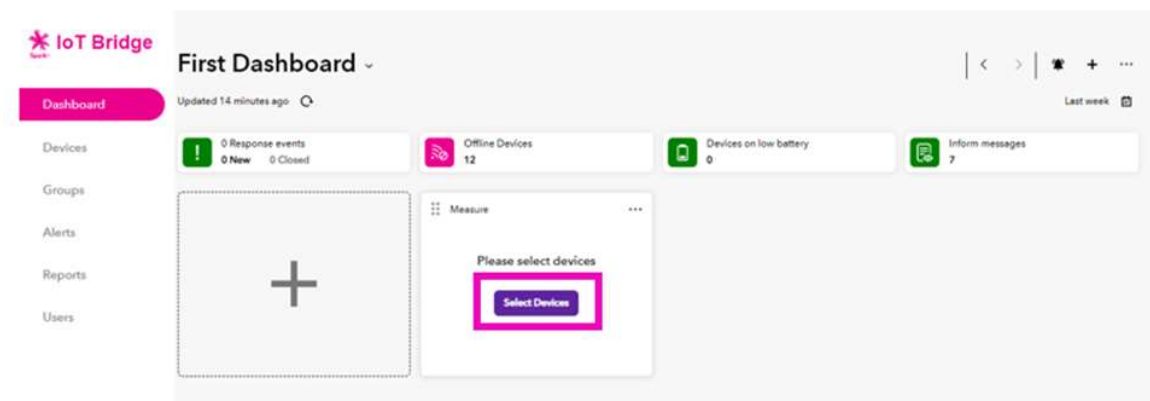
2. To display a widget on the dashboard, select “+”



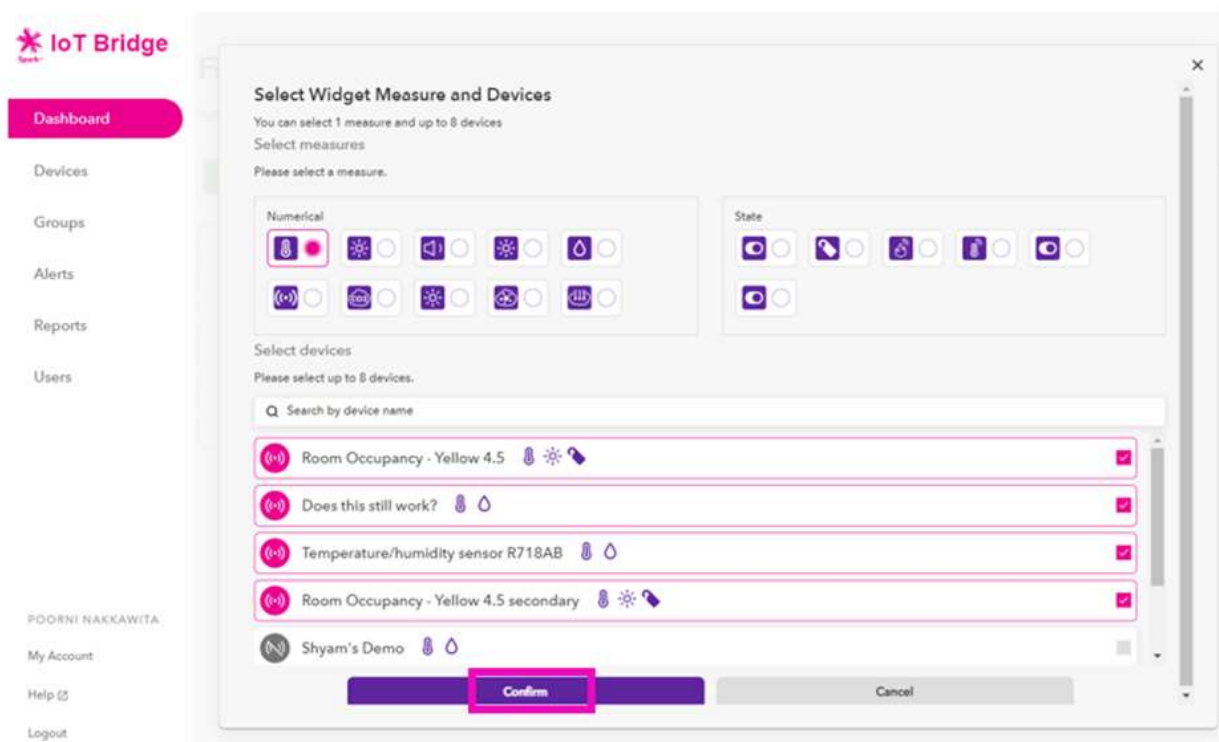
3. Select the widget you want to add and drag and drop to the dashboard.



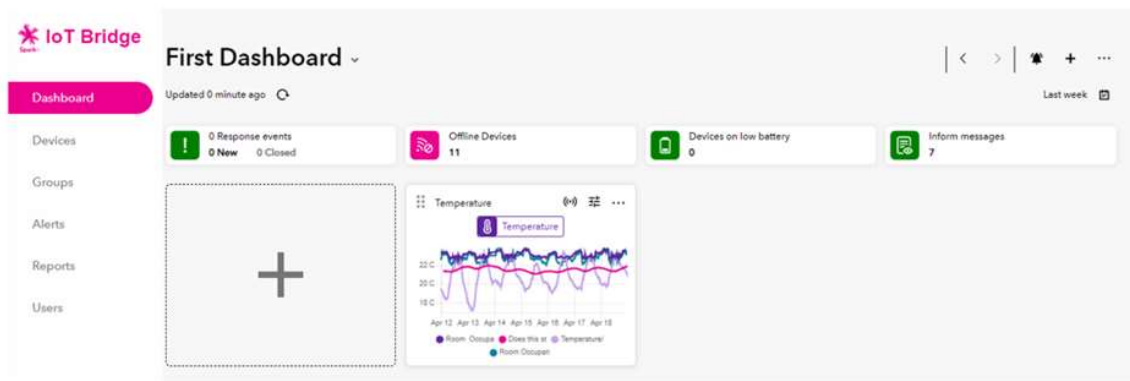
4. For “Measure” widget you can select 1 measure and up to 8 devices. Click Select Devices



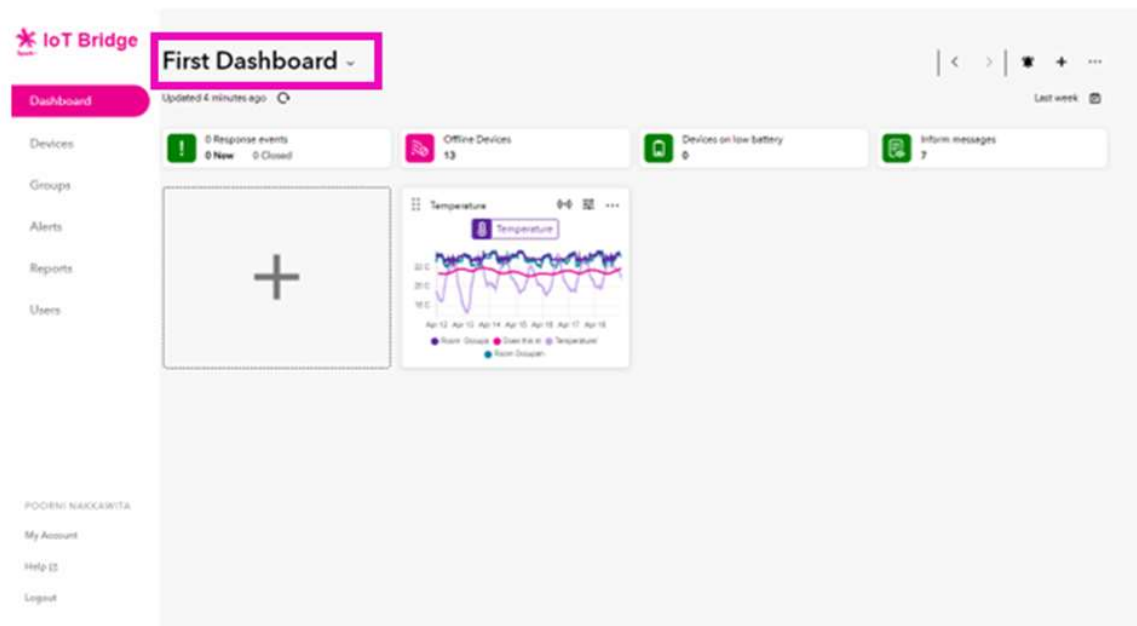
5. Select a “Measure” and select the devices. Click Confirm



6. Repeat if you want to add more widgets.



7. To change the Dashboard name click "First Dashboard"



8. Type the Dashboard name click the tick to confirm.



9. All Done.

## Create rules & alerts Efento devices

Efento devices optimize the battery lifetime by limiting the number of transmissions. By default, the devices will log a reading every 5 minutes, and upload all those readings every 3 hours. You can configure the device Edge Rule to trigger immediate real time alerts if certain conditions are met.

1. Log in to IoT Bridge and click Alerts in the menu on the left

## Alerts

Create and manage alerts for specific IoT devices and assign them to existing users.

Search alerts by name and device

+ Create alert

Offline device alerts  
OFFLINE DEVICE ALERTS

Response demo 1  
DISABLED  
MIN: 16C - MAX: 20C

RR Drinks Fridge above 20C  
DISABLED  
MIN: 0C - MAX: 20C

Inform Only - Test account  
MIN: 0C - MAX: 20C MIN: 80% - MAX: 95%

Test HBDHB Dialysis  
DISABLED  
MIN: 2C - MAX: 8C

- Click Create alert and assign the Efento device for your alert by typing the device name in the ASSIGN TO DEVICE field. A list of your devices will appear to help you find the right one. You have to set up rules first before creating an alert, therefore click Please add Device Rules before setting up an alert. Rules can be used for triggering alerts. You can set up to 12 rules



## Create Alert

Create an Alert for specific IoT devices and assign them to existing users.

ASSIGN TO DEVICE

Efento Temp Probe

DEVICE RULES

This device uses Rules set on the device to define alert conditions.  
You must setup Device Rules before creating an Alert.

Please add Device Rules before setting up an alert

STATUS

☒ Enabled

☐ Disabled

SCHEDULE

ALWAYS ACTIVE

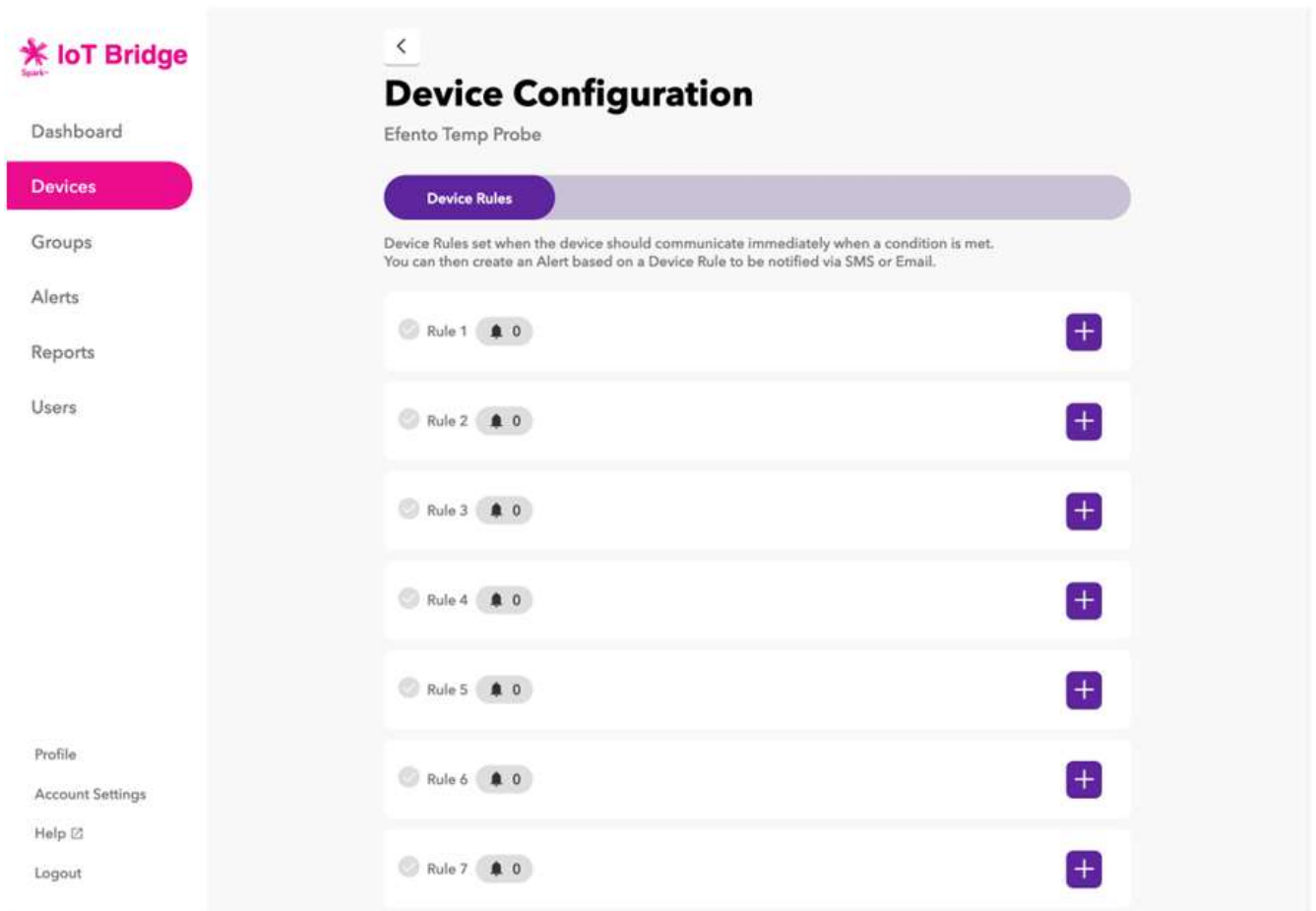


ALERT NAME

RECIPIENTS

Next

- Click the + sign next to Rule 1



4. Select the measure you want to create the rule from the drop down.

×

Update Device Rule

MEASURE

Temperature

5. Select the condition between “Is Above” and “Is Below”

1. Is Above – if a measurement taken by the device is higher than the threshold value, the device will trigger an immediate transmission.
2. Is Below – if a measurement taken by the device is lower than the threshold value, the device will trigger an immediate transmission.

×

Update Device Rule

MEASURE

Temperature

CONDITION

is above

6. **Select the sample type.**

1. **For last reading:** If the last reading the device takes meets the condition, trigger transmission.
2. **Average for the last number of readings:** If the average reading over the selected number of readings taken by the device meets the selected condition, trigger an immediate transmission.
3. Click Save Rule

**Update Device Rule**

MEASURE

Temperature

CONDITION

is above

THRESHOLD (°C)

-10.5

SAMPLE

for last reading

- for last reading
- average for last 2 readings
- average for last 3 readings
- average for last 5 readings

7. Pop-up will appear asking to either select create new alert or to select configure more rules. If you have completed adding more rules, click Create new alert.

**Rule Updated**

The Device Rule will be sent to the device when it next communicates.

Ensure to create an Alert for the Device Rule you have just created.

Create new Alert

Configure more Device Rules

8. You will be taken into the rule creation page. Select a rule for this alert to be associated with.

**Note:** You can only select one rule to be associated with an alert

## Create Alert

Create an Alert for specific IoT devices and assign them to existing users.

### ASSIGN TO DEVICE

Efento Temp Probe

### DEVICE RULES

This device uses Rules set on the device to define alert conditions. Please select the Device Rule you want to trigger this Alert.

 **Rule 1**  
Temperature is above -10.5°C for last reading.



Edit Device Rules



### STATUS

☒ Enabled

☐ Disabled

### SCHEDULE

ALWAYS ACTIVE



### ALERT NAME

### RECIPIENTS

9. By default, alert status has been selected to be Always Active. If you want the alert to be only active during certain date(s) and/or time, de select Always Active and select the days and time you want the alert to be active.

### ALERT STATUS

☒ Enabled

☐ Disabled

### ALERT SCHEDULE

ALWAYS ACTIVE



Mon

Tue

Wed

Thu

Fri

Sat

Sun

All day



9 am

+

to

5 pm

+

This alert will trigger from 9am to 5pm on Mo, Tu, We, Th, Fr.

10. Give your alert a name and select who will be receiving the alert and how (email or txt). Click Next.

**Note:** Only "Inform Only" alerts are available for Efento devices at this stage.

## Create Alert

Create an Alert for specific IoT devices and assign them to existing users.

ALERT NAME

Deep Freezer above -10.5

ASSIGN TO DEVICE

Efento Temp Probe

DEVICE RULES



Rule 1

Temperature is above -10.5°C for last reading.

WHEN THRESHOLD REACHED, INFORM ME

Immediately

SCHEDULE

Always active

RECIPIENTS



Finn Stainton

EMAIL SMS

TYPE

Inform only

STATUS

Enabled

Confirm

Edit

## Create a report

1. Log in to IoT Bridge and click Reports in the menu on the left

## Reports

View reports generated from your devices.

Search by report name or device



Create report

2. Click Create report and select a device for your report. Start typing the device name in the ASSIGN DEVICE field. A list of your devices will appear to help you find the right one.

## Create report

Create report generated from your devices.

### ASSIGN DEVICE

Front Room drinks fridge

Atrium - outside Front Room  
Front Room drinks fridge  
Front Room - ambient  
Front Room  
Home air quality sensor

☒ Export Data

☐ Temperature

☐ Humidity

### DATA AGGREGATION

None

### REPORT RECURRENCE

☐ On schedule

☒ One-off

### START DATE

3. Choose the data type for the alert; and select if you want your data aggregated.

1. Use "None" to display all data points that have been collected during the specified period
2. Use "Hour" or "Day" to show the Minimum, Maximum and Average values for each hour or day within the specified period.

Front Room drinks fridge

### REPORT TYPE

☐ Summary

☒ Export Data

### SENSOR MEASURE

☒ Temperature

☒ Humidity

### DATA AGGREGATION

Hour

None  
Hour  
Day

☒ One-off

### START DATE

09 Jun 2022, 17:18



### END DATE

16 Jun 2022, 17:18



### REPORT RECIPIENTS

Confirm

4. To create a recurring report, select On schedule. To create a one-off report, select Ad hoc. Fill out report details as required.

DATA AGGREGATION

Hour

REPORT RECURRENCE

☒ On schedule
 ☐ One-off

REPORT NAME

DATE RANGE

Reports cover the calendar/day 24-hour period from midnight to midnight. You can choose the time the report is sent to recipients.

REPORT FREQUENCY

Daily

The daily report covers a 24-hour long period. The report is sent out the following day and repeats daily.

REPORT DELIVERY

Target delivery for 5:00pm - 6:00pm

REPORT RECIPIENTS

STATUS

☒ Enabled
 

12:00am - 1:00am  
 1:00am - 2:00am  
 2:00am - 3:00am  
 3:00am - 4:00am  
 4:00am - 5:00am  
 5:00am - 6:00am  
 6:00am - 7:00am  
 7:00am - 8:00am  
 8:00am - 9:00am  
 9:00am - 10:00am  
 10:00am - 11:00am  
 11:00am - 12:00pm

5. Add report recipients. Begin typing in the REPORT RECIPIENTS field to show the list of available users. All recipients need to have been setup as IoT Bridge users. You can add as many recipients are needed. Review the report details and click Confirm.

REPORT RECURRENCE

☒ On schedule
 ☐ One-off

REPORT NAME

DATE RANGE

Reports cover the calendar/day 24-hour period from midnight to midnight. You can choose the time the report is sent to recipients.

REPORT FREQUENCY

Daily

The daily report covers a 24-hour long period. The report is sent out the following day and repeats daily.

REPORT DELIVERY

Target delivery for 5:00pm - 6:00pm

REPORT RECIPIENTS

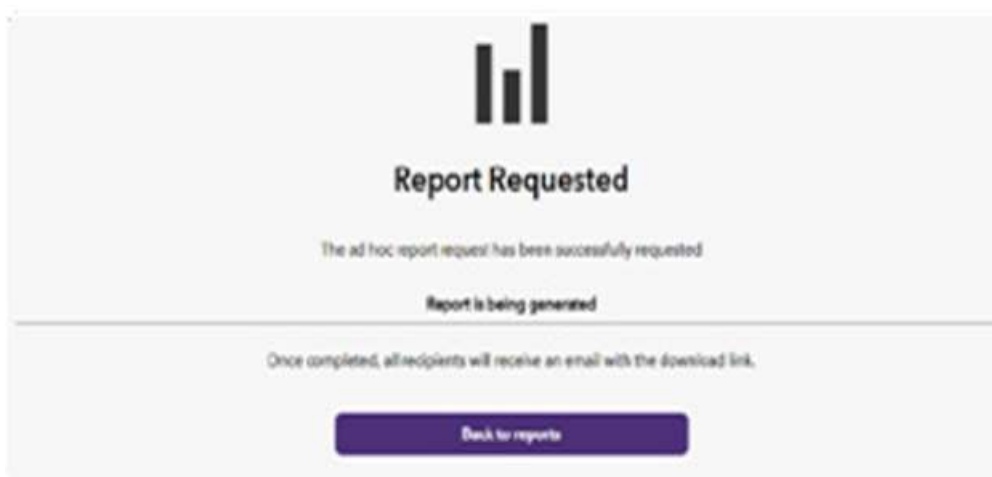
Abhishek Rattan

STATUS

☒ Enabled
 ☐ Disabled

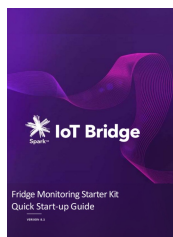
Next

6. All done.



---

## Documents / Resources



### [Spark IoT Bridge Fridge Monitoring Starter Kit](#) [pdf] User Guide

IoT Bridge Fridge Monitoring Starter Kit, Fridge Monitoring Starter Kit, Monitoring Starter Kit, Starter Kit

## References

- [\\* Broadband Internet and Mobile Phone Services | Spark NZ](#)
- [\\* iotbridge.nz/app](#)