



## spanet V3 SmartLink Module Installation Guide

[Home](#) » [spanet](#) » spanet V3 SmartLink Module Installation Guide 

### Contents

- [1 spanet V3 SmartLink Module](#)
- [2 Product Information](#)
- [3 Product Usage Instructions](#)
- [4 USING INSTRUCTION](#)
- [5 Documents / Resources](#)
  - [5.1 References](#)
- [6 Related Posts](#)



### spanet V3 SmartLink Module



## Product Information

- **Specifications**

- **Product Name:** SmartLink Wifi Controller V3
- **Compatibility:** EXP1 socket only
- **Signal Strength:** Stronger signal strengths are closer to 0
- **Maximum Data Cable Length:** 10m
- **Water Protection:** Module MUST be orientated vertically with WiFi logo at the top

## Product Usage Instructions

- **Step 1: Module Placement** Locate the SmartLink module in a position with the best line of sight to the router.  
Do not fix the module permanently until app setup is complete and the best WiFi signal location is determined.
  - If the spa is in a pit or under a deck, locate the module above ground in a weather-protected area with a line of sight to the router. A longer data cable may be required (maximum 10m).
  - **Note:** If the EXP1 socket is already populated, remove that cable from EXP1 and connect it to the LOOP socket inside the module. Ensure that the data cable coming from SmartLink connects directly to the EXP1 socket.
- **Step 2: Connect Data Cable**
  - Connect the data cable from the SmartLink module to the spa control EXP1 socket.
- **Step 3: Download and Register/Login to the App**
  - Download the Spanet SmartLink app from your preferred app store. Register and/or login to the app.
  - **Note:** If you plan to use the app across multiple devices with different Apple/Google accounts, you must create an account using the Register option. For additional devices, login with the email and password you registered.
  - Do NOT register another account.
- **Step 4: Add Spa to User Account**
  - **Note:** A spa can only be set up/accessed on one user account, but multiple spas can be added to the same user account.
  - You will require your router WiFi password during this step.
- **Step 5: Select SmartLink V3 Model**
  - Select the SmartLink V3 model from the app.
- **Step 6: Scan for Local WiFi Networks**
  - Select the SV module in the app to begin scanning for local WiFi networks.
  - If the app is only to be used on one or more devices sharing the same Apple/Google account, you can use the respective sign-in buttons (Sign in with Apple/Sign in with Google) below.
- **Step 7: Connect Spa to WiFi Network**
  - Select the WiFi network to which you want to connect the spa.
  - **Note:** If no WiFi network is found, relocate the module to a better position and use the refresh button in the app to conduct a new WiFi scan to see if the signal has improved. Signal strengths closer to 0 are stronger.
- **Step 8: Enter WiFi Network Password**
  - Enter the password for your WiFi network in the app.
- **Step 9: Complete Setup**

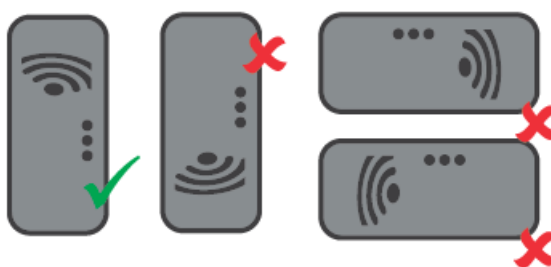
- Enter a name for your spa in the app, and the setup is complete.
- **Step 10: Fix Module Position**
  - Fix the module position using adhesive gasket or screw mounts inside the module.
  - **Note:** Bluetooth is used for module setup, so allow access when prompted by the app.
  - For further information, visit [spanet.com.au/spa-accessories/smartlink](https://spanet.com.au/spa-accessories/smartlink).
- **FAQ**
  - **Q:** Can I use the SmartLink app on multiple devices?
  - **A:** Yes, you can use the app on multiple devices. If the devices use different Apple/Google accounts, create an account using the Register option. For additional devices, login with the email and password registered. Do NOT register another account.
  - **Q:** How many spas can be added to a user account?
  - **A:** Multiple spas can be added to the same user account.
  - **Q:** What should I do if no WiFi network is found during setup?
  - **A:** Relocate the module to a better position and use the refresh button in the app to conduct a new WiFi scan. Signal strengths closer to 0 are stronger.

## USING INSTRUCTION

- **Step 1:** Locate SmartLink module in position with best line of sight to router
  - **Note:** Do not fix module permanently until app setup is complete and best WiFi signal location determined  

spanet-V3-SmartLink-Module-FIG-1 (1)
  - If spa in pit or under deck, locate module above ground in a weather protected area with line of sight to router (longer data cable may be required; max 10m)  

spanet-V3-SmartLink-Module-FIG-1 (2)
  - **Note:** Module MUST be orientated vertically to receive adequate signal strength with WiFi logo at the top to maintain water protection

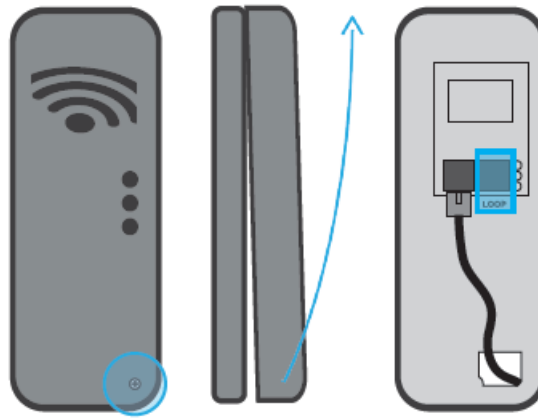


- **Step 2:** Connect data cable from SmartLink module to spa control EXP1 socket



spanet-V3-SmartLink-Module-FIG-1 (5)

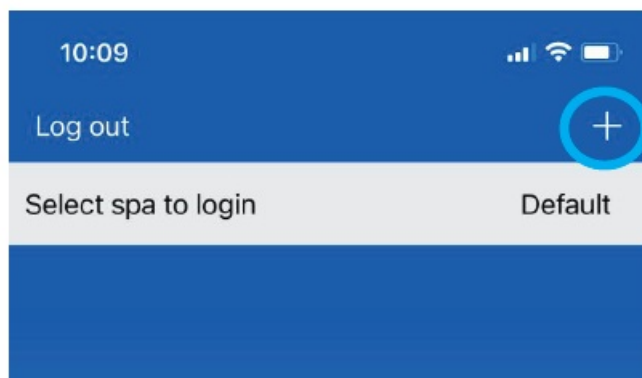
- **Note:** If EXP1 socket already populated, remove that cable from EXP1 and connect it to the LOOP socket inside module. Ensure data cable coming from SmartLink connects directly to EXP1 socket



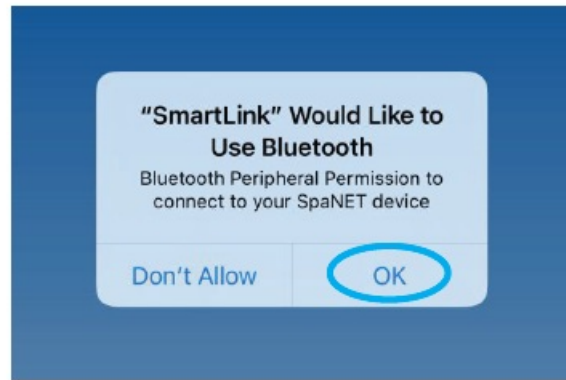
- **Step 3:** Download Spanet SmartLink app



- **Step 3:** Register and/or login to app
  - **Note:** If the app is to be used across multiple devices (which use different Apple / Google accounts) then you must create an account using the Register option. For additional devices login with the email and password you registered. Do NOT register another account
  - If the app is only to be used on one or more devices sharing the same Apple/Google account, you can use the respective sign in buttons below
- **Step 4:** Add spa to user account
  - **Note:** A spa can only be setup/accessed on one user account, however multiple spas can be added to the same user account



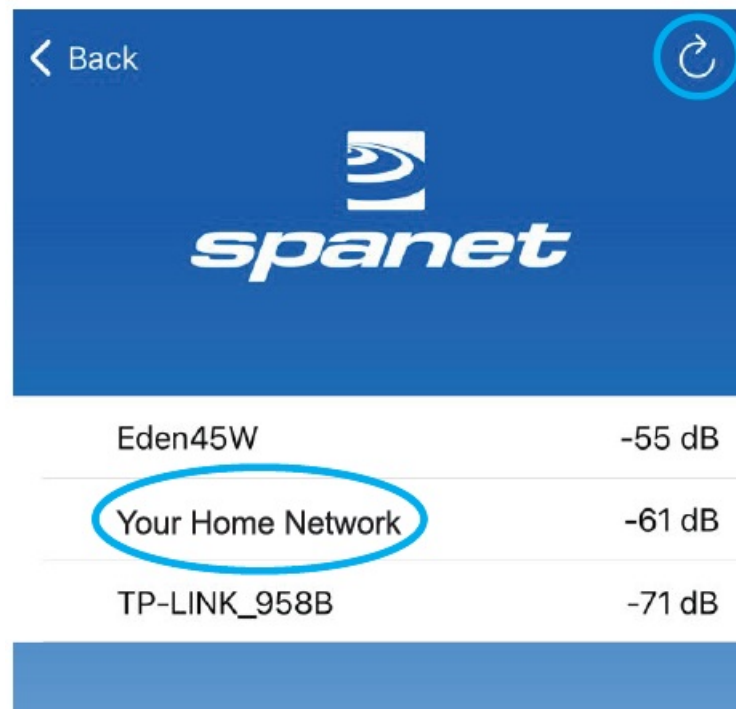
- You will require your router WiFi password with you
- **Step 5:** Select SmartLink V3 model



- **Note:** Bluetooth is used for module setup, allow access
- **Step 6:** Select SV module to begin scanning for local WiFi networks

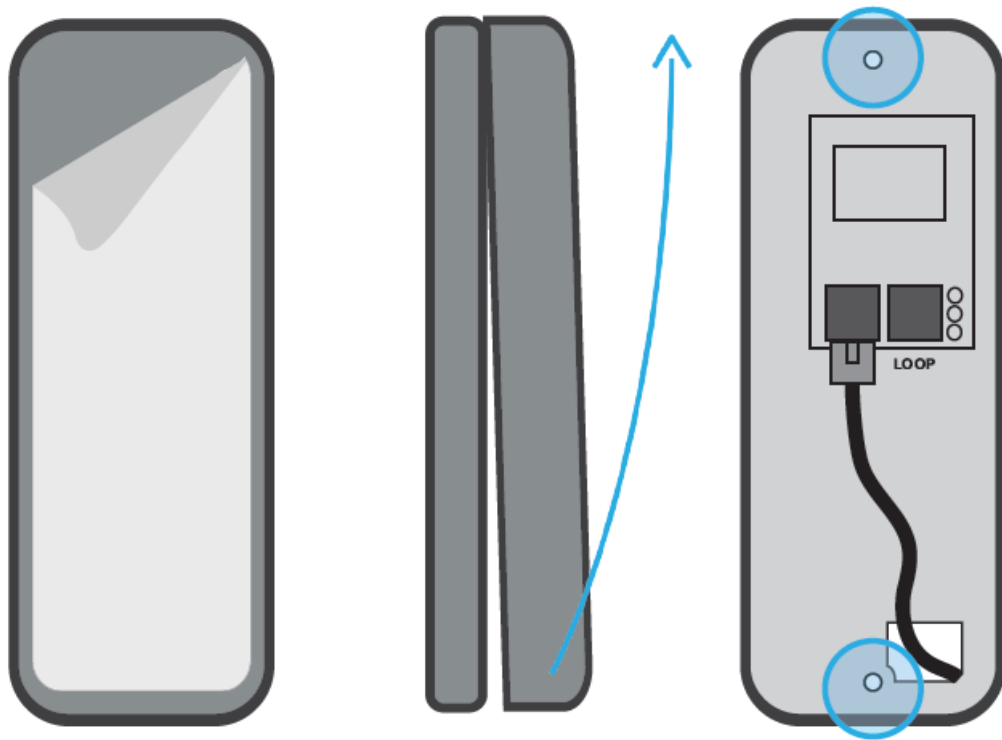


- **Step 7:** Select WiFi network to connect spa to



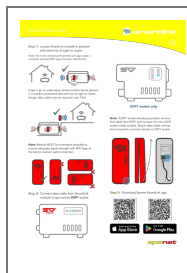
- **Note:** If no WiFi network found, relocate module to a better position and use the refresh button to conduct a new WiFi scan to see if signal has improved. Signal strengths closer to 0 are stronger.
- **Step 8:** Enter password for your WiFi network
- **Step 9:** Enter a spa name and setup is complete

- **Step 10:** Fix module position using adhesive gasket or screw mounts inside module



- **Further Info:** [spanet.com.au/spa-accessories/smartlink](https://spanet.com.au/spa-accessories/smartlink).

## Documents / Resources



[spanet V3 SmartLink Module](#) [pdf] Installation Guide  
V3 SmartLink Module, V3, SmartLink Module, Module

## References

-  [SmartLink WiFi Modules for Spas](#)
- [User Manual](#)