



Spaceman 1206 Smart Sensor Trash Can with Butterfly lid Instructions

[Home](#) » [SPACEMAN](#) » Spaceman 1206 Smart Sensor Trash Can with Butterfly lid Instructions 

Contents

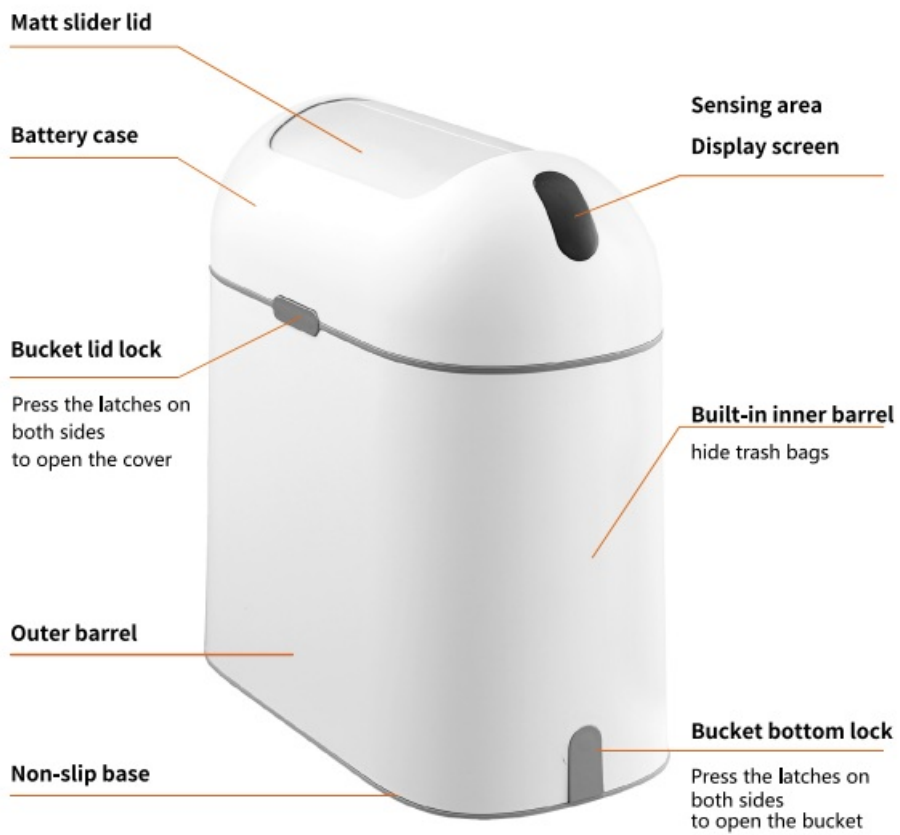
- [1 Spaceman 1206 Smart Sensor Trash Can with Butterfly lid](#)
- [2 Product Details](#)
- [3 Install Steps](#)
- [4 Common Troubleshooting](#)
- [5 Documents / Resources](#)

SPACEMAN

Spaceman 1206 Smart Sensor Trash Can with Butterfly lid



Product Details



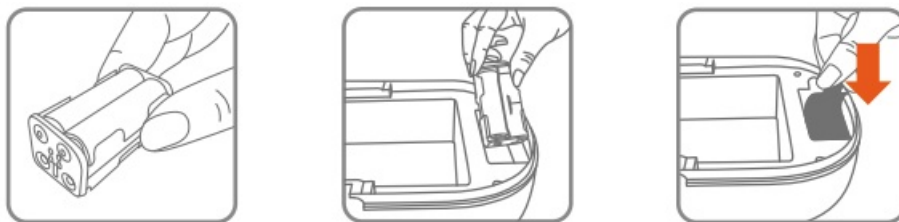
Install Steps



- **Step 1:** Take off the lid
 - Flip the cover over, the battery compartment is inside

- **Step 2:** Install batteries

Install 3 AA batteries



- Press the latches on both sides to open the upper cover, then flip the cover over
 - Locate the battery compartment and open the lid
 - Take out the battery compartment and put 3 AA batteries into the battery compartment according to the positive and negative indications
 - Put the battery compartment into the battery box, please pay attention to align the two metal rounds wafer of the battery compartment with the two metal shrapnel in the battery box
 - When the battery compartment is put into the battery box, you can put the grey ribbon under the battery compartment. When you take out the battery compartment next time, you can lift the grey ribbon up. The battery compartment can be ejected, which is convenient for battery replacement.
 - After the battery compartment is in place, please put the battery compartment cover back and cover it tightly.
- **Step 3:** Turn on the power switch Turn the smart switch button on the back of the upper bucket cover to the “I” key, and the induction screen displays “O”, put the upper bucket cover back on the bucket body, and the induction function starts to work normally



- **Step 4:** Motion sensor function The sensing area is located above the display When the object is in the sensing area (about 15-25cm), the lid of the bucket will open automatically, and 5 blue display lights will light up When leaving the sensing area, the blue light counts off sequentially, and the lid closes automatically in about 5 seconds



- **Step 5:** Normally open mode Press the button on the display lightly, and the lid opens automatically Blue indicator light rotates display, Keep the lid open state for 5 min Press the button again, the lid closes and the light goes out



- **Step 6:** The way to exchange garbage bags



- Press the locks on both sides of the lower trashbin, lift the outer barrel up, and take it out
- Put the garbage bag over the inner grey bucket and fix the garbage bag in the garbage bag retaining ring
- Then put the outer barrel back, and the lock will be automatically fastened

Notice

- When installing the battery, please pay attention to the positive and negative poles of the
- Do not press the lid or flip the lid with external force during the opening process to avoid damaging the accessories.
- Avoid using the trash can in direct sunlight or in an excessively humid environment.
- Keep the sensing area clean to ensure the normal sensing function of the lid
- Please do not disassemble repair or replace parts with other accessories without permission

Common Troubleshooting

| Malfunction | Method of exclusion |
|---|--|
| Can't open normally | Check whether the battery is installed in the correct direction or whether the battery have electricity, and turn the power switch back on |
| | Check the sensing area for foreign matter, if so, clean it with a clean rag |
| Can't close normally | Check the sensing area for foreign matter, if so, clean it with a clean rag |
| | Check whether the circuit is damp, if so, please do not use it, put it in a ventilated place for dry, then use again |
| | Check to see if there is any object blocking the lid, if so, remove it |
| Lid opens slower than usual | The electricity for battery is empty, please replace the battery |
| PS: If the above exclusion methods do not work, please contact the seller, please do not disassemble the original electronic parts contained in the trash can | |

Documents / Resources



[Spaceman 1206 Smart Sensor Trash Can with Butterfly lid](#) [pdf] Instructions

1206 Smart Sensor Trash Can with Butterfly lid, 1206, Smart Sensor Trash Can with Butterfly lid, Can with Butterfly lid, Butterfly lid