



---

[Home](#) » [Spa Electrics](#) » **Spa Electrics RM-WF iRIS Wi-Fi Lighting Controller Instruction Manual** 

## **Contents** [ [hide](#) ]

- 1 Spa Electrics RM-WF iRIS Wi-Fi Lighting Controller
- 2 Product Usage Instructions
- 3 BEFORE YOU START
- 4 WHAT'S INCLUDED
- 5 MOUNTING THE CONTROLLER
- 6 CONNECTING TO TRANSFORMERS
- 7 WIRING GUIDE
- 8 APP INSTALLATION
- 9 APP SETUP
- 10 ADD A DEVICE
- 11 MULTI PLUS SETUP
- 12 OPERATING INSTRUCTIONS
- 13 CHANGING SOLID COLOURS
- 14 COLOUR SHOWS
- 15 SCHEDULING
- 16 ZONES
- 17 RENAMING ZONES
- 18 ACCESSORY DEVICES
- 19 TECHNICAL SPECIFICATION
- 20 APPENDIX
- 21 TROUBLESHOOTING
- 22 WARRANTY INFORMATION
- 23 PRODUCT SUPPORT AND INFORMATION
- 24 FAQ
- 25 Documents / Resources
  - 25.1 References



## **Spa Electrics RM-WF iRIS Wi-Fi Lighting Controller**



## Specifications

- **Model:** RM-WF
- **Compatibility:** Spa Electrics MULTI PLUS model lights
- **Power Supply:** Mains power supply
- **Distance from pool/spa:** At least 3.5 meters

## Product Usage Instructions

### Mounting the Controller

- Ensure the unit is installed at least 3.5 meters away from the pool/spa. Fasten the transformer bracket to the wall with the iRIS Controller base at least 500mm above ground level.

### Connecting to Transformers

- Plug the iRIS Controller into the mains power supply. Connect a pool light transformer to the outlet indicated for pool lights and a spa light transformer to the outlet indicated for spa lights.

## **Wiring Guide**

- Follow the wiring diagram provided to correctly connect the spa and pool transformers along with the corresponding lights.

## **App Installation**

1. Go to your smart device's app store (Google Play for Android or App Store for Apple iOS).
2. Search for "Smart Life – Smart Living" and install the app.
3. Read and agree to the iRIS Wi-Fi Terms & Conditions available on the website.

## **App Setup**

1. Open the Smart Life app and agree to the terms and conditions
2. Allow notifications if prompted and create a new Smart Life account or log in with an existing one.
3. Follow the on-screen prompts to set up your account and device.

## **BEFORE YOU START**

- The iRIS lighting system is designed to be used with the Spa Electrics MULTI PLUS model lights. (Please check product labelling to ensure it is suitable)
- For Retrofit installations, where existing transformers have been hard-wired, a suitably qualified electrician must disconnect the transformers and terminate with a plug-top connection.
- OR the transformers are to be replaced with the Spa Electrics LV25-12 or LV50-12 models.

## **IMPORTANT NOTE**

- The diagrams and smart device images throughout this document are for illustrative purposes only, and may differ depending on your specific device and operating system (Android or iOS).

## **WARNING**

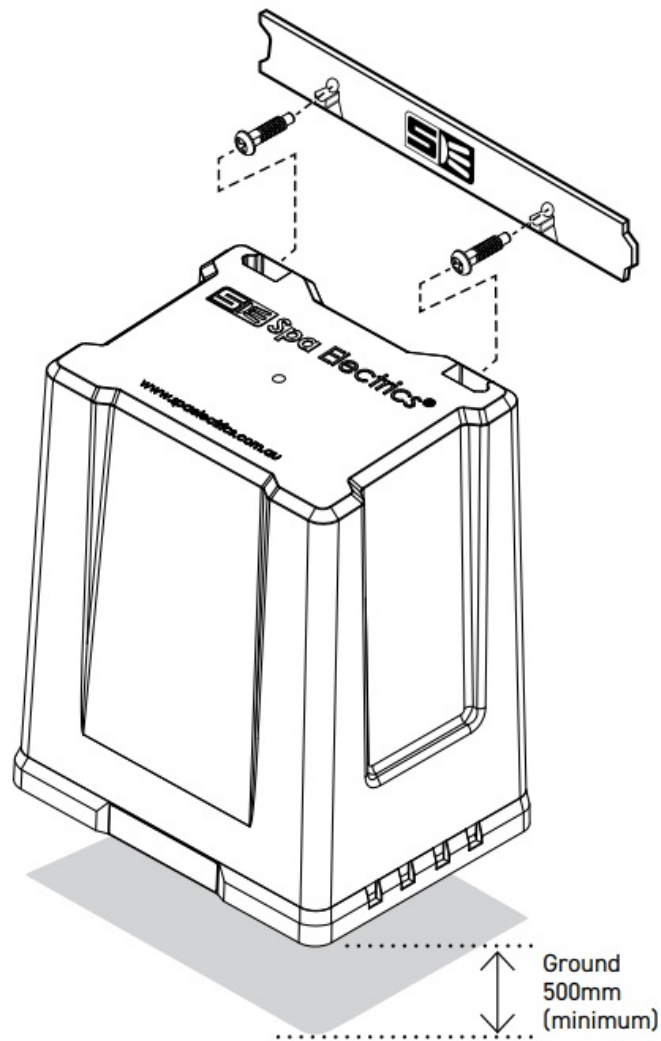
- If the installation requires running wire through the building structure, special wiring methods are needed.
- Do not submerge.
- Do not exceed the maximum ratings of individual components, wiring devices, and the current-carrying capacity of conductors.

## WHAT'S INCLUDED



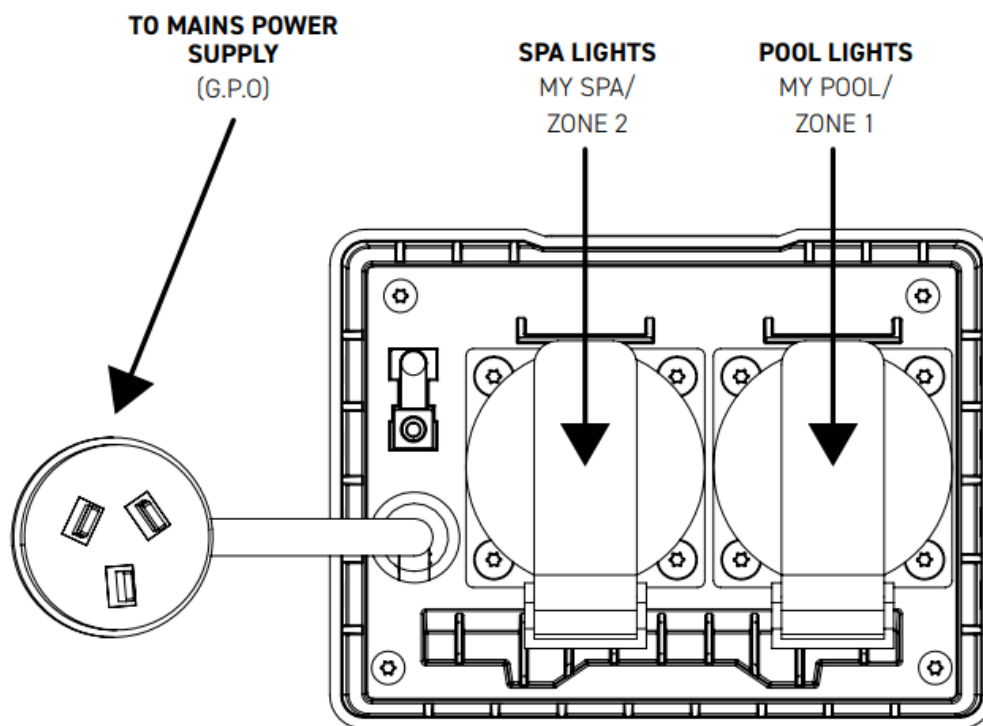
## MOUNTING THE CONTROLLER

- Ensure that the unit is installed at least 3.5 Metres away from the pool and/or spa.
- Fasten the transformer bracket to the wall, ensuring the base of the iRIS Controller is at least 500mm above ground level.

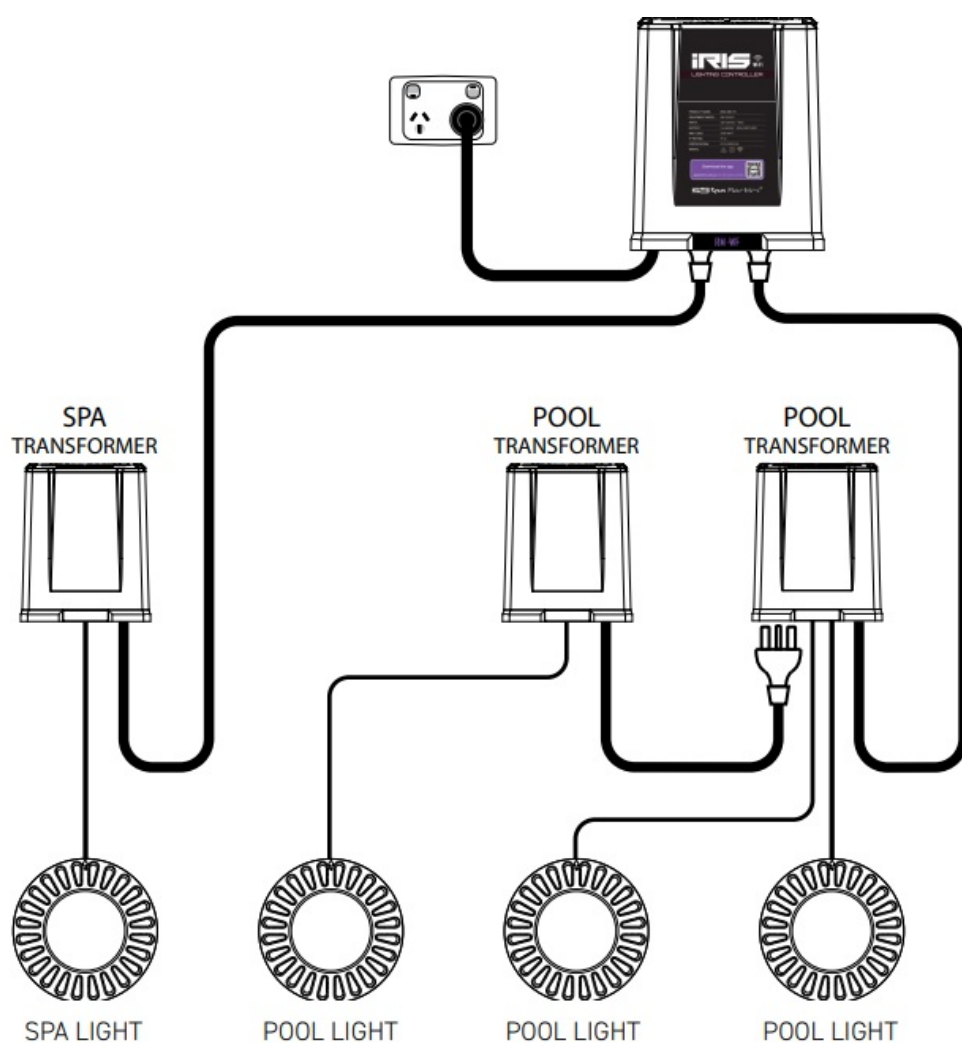


## CONNECTING TO TRANSFORMERS

- Plug the iRIS Controller into the mains power supply.
- Plug a pool light transformer into the outlet indicated POOL LIGHTS as per the diagram below.
- Plug a spa light transformer into the outlet indicated SPA LIGHTS as per the diagram below.



## WIRING GUIDE



## APP INSTALLATION

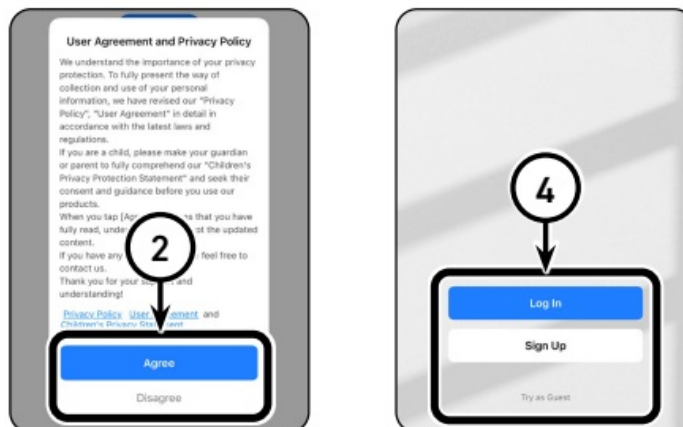
Before proceeding, ensure you have read, understood, and agreed to the iRIS Wi-Fi Terms & Conditions available here: [spaelectrics.com.au/iris-wifi-tc](http://spaelectrics.com.au/iris-wifi-tc)

1. Go to your smart device's app store: Google Play (Android) or App Store (Apple iOS).
2. Search for "Smart Life – Smart Living".
3. Select to install the Smart Life app.



## APP SETUP

1. Open the Smart Life app.
2. Read the terms and conditions and then tap "Agree" to proceed.
3. You may be notified to allow notifications from the Smart Life app. Follow the prompts of your specific device to either allow or not allow according to your preference.
4. Tap "Sign Up" to create a new Smart Life account.
  - Or tap "Log In" if you want to use an existing account.
  - Or optionally, you can tap "Try as Guest" to use the app without creating an account. (see Appendix 1).
  - Proceed with your choice by following the on-screen prompts.

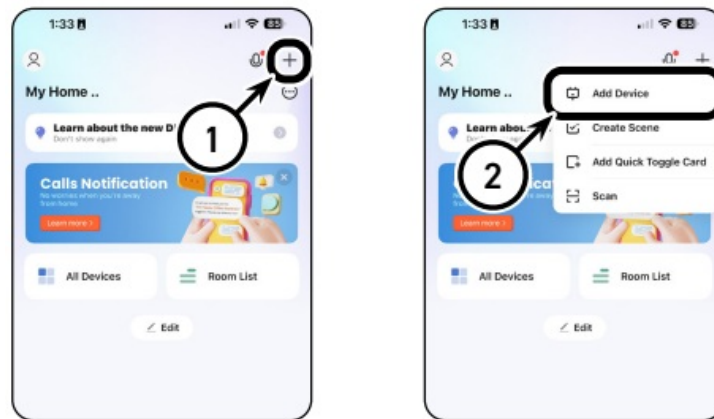


## ADD A DEVICE

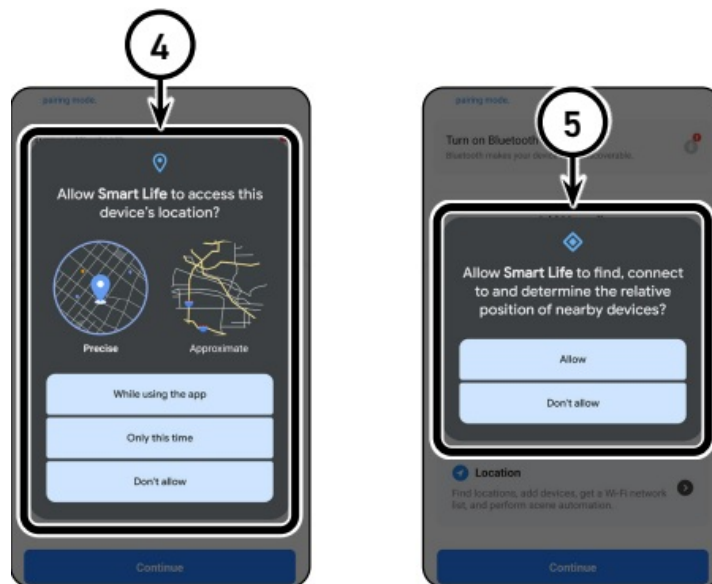
1. Tap the plus + button in the top right corner.



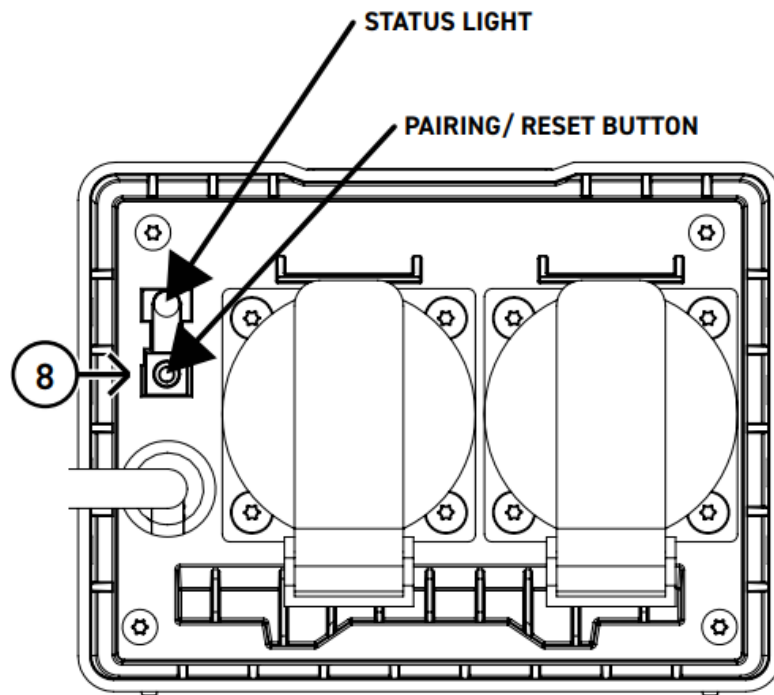
2. Tap “Add Device”.
3. You may be prompted that the Smart Life app requires access permissions to Bluetooth and Location. If prompted, tap “Continue”.



4. Then follow the prompts of your specific device to allow and enable Location and Bluetooth access.
5. Your specific device may prompt you to allow Smart Life to find nearby devices. Follow the prompts on your device to allow this function.



6. Ensure Bluetooth is enabled on your device.
7. Locate the Pairing Button at the bottom of the iRIS Wi-Fi Controller.
8. Press and hold the pairing button for at least 5 seconds.
  - After holding for at least 5 seconds, release the button. The Status Light next to the pairing button should now be flashing.



- **IMPORTANT**

- Ensure that the Status Light is flashing before proceeding to Step 9.
- The device will NOT pair successfully otherwise.
- If the status light is NOT flashing, repeat Step 8.

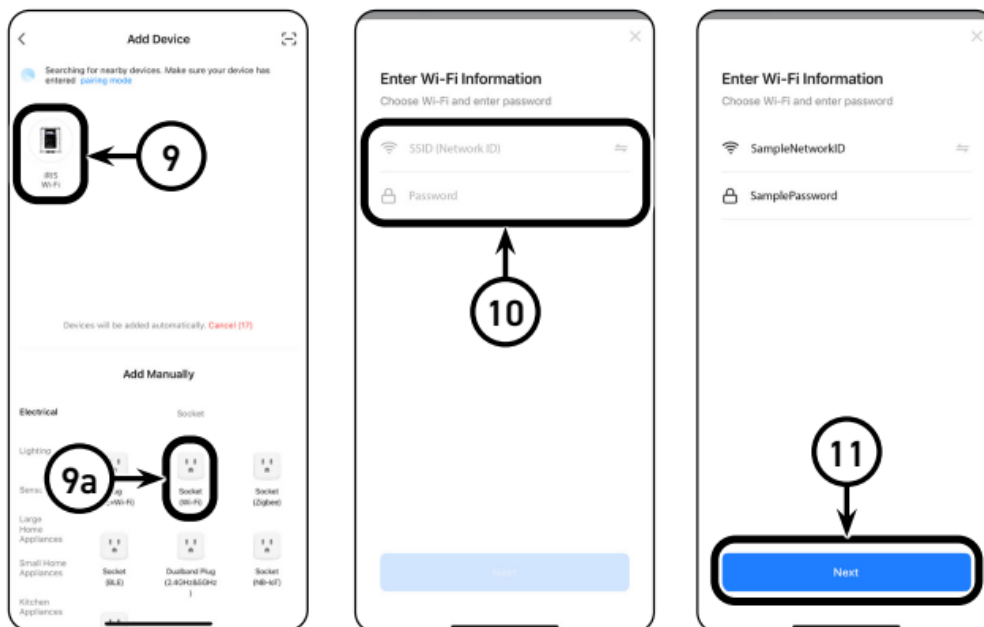
9. Now that the status light on the iRIS Wi-Fi is flashing, wait for the iRIS Wi-Fi device to appear. Then tap on the iRIS Wi-Fi symbol.

- If the iRIS Wi-Fi device does not appear, check that Bluetooth is turned on.

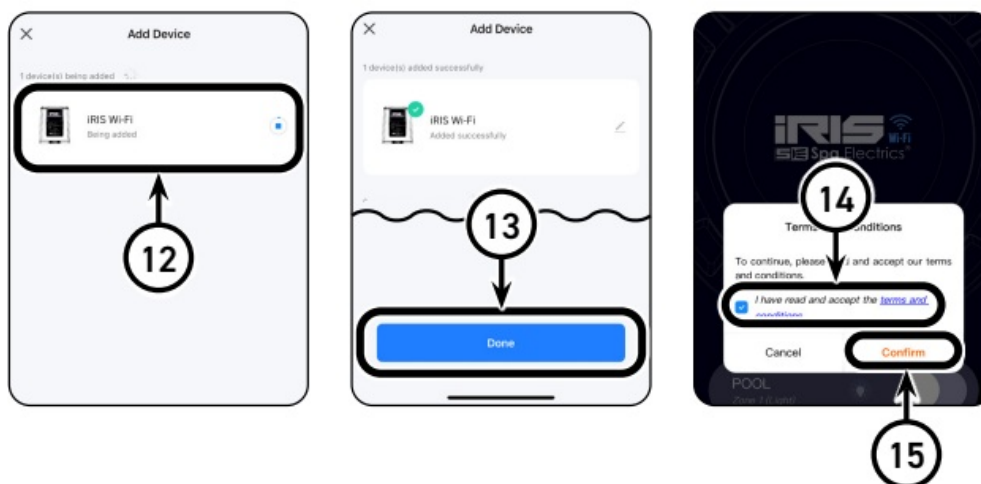
Alternatively, you can manually add the iRIS Wi-Fi by tapping the “Socket Wi-Fi” option indicated below (see fig. 9a) and following the on-screen prompts.

10. Enter the Network ID and Password of the Wi-Fi network you want your iRIS Wi-Fi to connect to. The smart device you are using must be connected to the same Wi-Fi network as the iRIS Wi-Fi during this initial setup. If you are experiencing difficulties, try disabling Mobile Data.

11. Then Tap “Next”.



12. Wait for the iRIS Controller to be added.
13. Once the iRIS Controller has successfully been added, indicated by a green tick, tap “Done”.
14. You will then automatically be taken to the iRIS Wi-Fi application. To use your iRIS Wi-Fi, please tick the checkbox to confirm you have read and accepted the terms and conditions.
15. Then Tap “Confirm”.



- Your iRIS Wi-Fi Controller is now successfully set up and ready for use.
- **Note:** If the colours selected in the app do not match the colour of the lights, go to the Multi Plus Setup section of this instruction manual and follow the steps to put the lights into iRIS Controller mode.

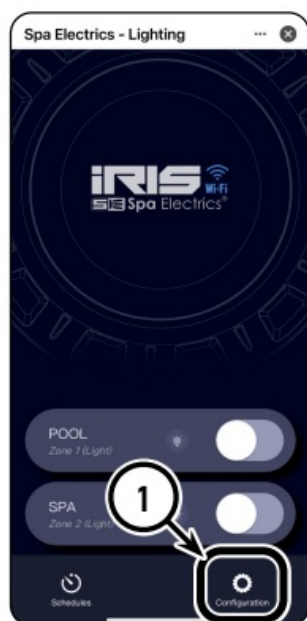
## MULTI PLUS SETUP

### BEFORE YOU START

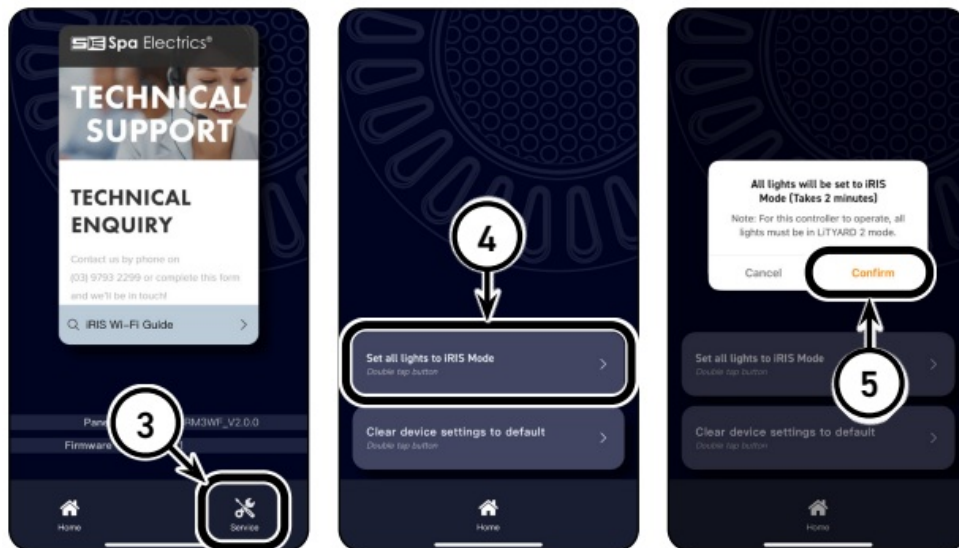
- The following setup instructions are only required if the lights are not changing to the correct colours based on the colours selected in the app.
- iRIS is compatible with Spa Electrics MULTI PLUS lights only.
- The MULTIPLUS light has 9 inbuilt modes of operation for use on a variety of different control systems or installation types.
- When you first install your MULTIPLUS light, it will operate in the default, 'Manual' mode for use with a wall switch. In order to connect the light to Spa Electrics' iRIS Controller mode, please follow the steps below.
- Disconnect any blowers, pumps, or devices from the iRIS WiFi if they may be sensitive to short-duration power cycling (4 seconds ON, 10 seconds OFF). After completing the Multi Plus Setup, you may reconnect these other devices.

## iRIS Wi-Fi LIGHTING CONTROLLER QUICK SETUP

1. Tap Configuration to enter the Configuration menu.
2. Tap Support to enter the Support menu.



3. Tap and hold to enter the Service menu.
4. Double Tap "Set all lights to iRIS Mode".
5. Tap "Confirm".



6. The lights will now automatically be set up into iRIS mode. Wait on this screen until the flashing 'please wait' message disappears. This will take approximately 2 minutes.

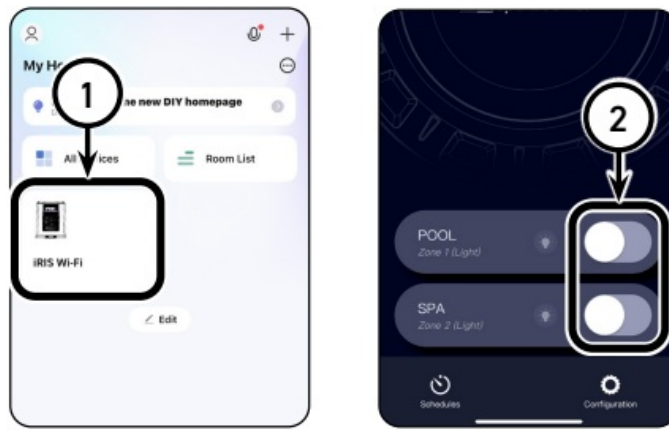


- Your lights should now be in iRIS mode and ready for use.
- **Note:** Confirm your lights operate correctly by selecting colours in the app and confirming the correct colours are output from the lights.

## OPERATING INSTRUCTIONS

### TURNING LIGHTS ON

1. Tap the iRIS Wi-Fi shortcut on the Smart Life App home screen to enter the iRIS Wi-Fi Application. Alternatively, tap "All Devices" and select iRIS Wi-Fi from your list of devices.
2. Tap the On/Off toggle of either Zone 1 or Zone 2 to turn the lights of that zone on.

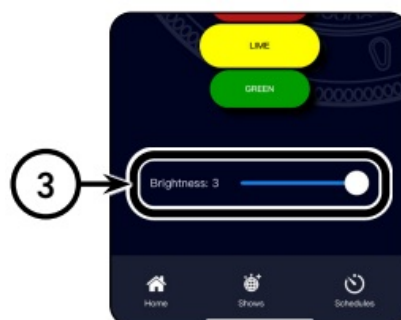


## CHANGING SOLID COLOURS

1. Tap the light bulb symbol on either Zone 1 or Zone 2 to turn the lights on and go to the color change menu.
2. Tap one of the colour options on the screen to change the output color of the lights connected to the zone.



3. The brightness of the colour can be changed from 1 (dimmet) to 3 (brightest) by moving the slider.

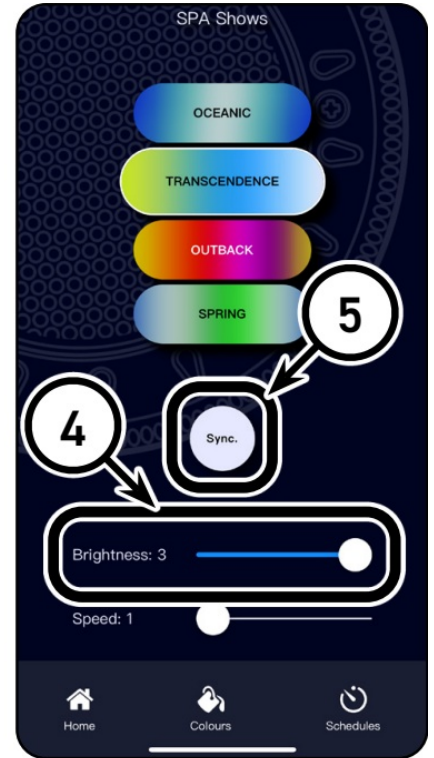
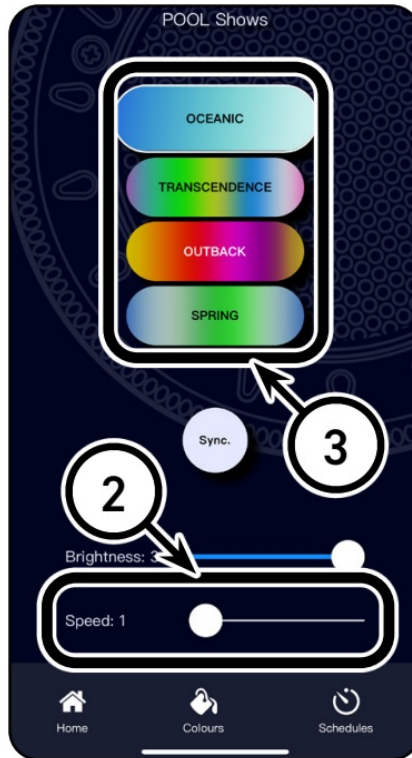
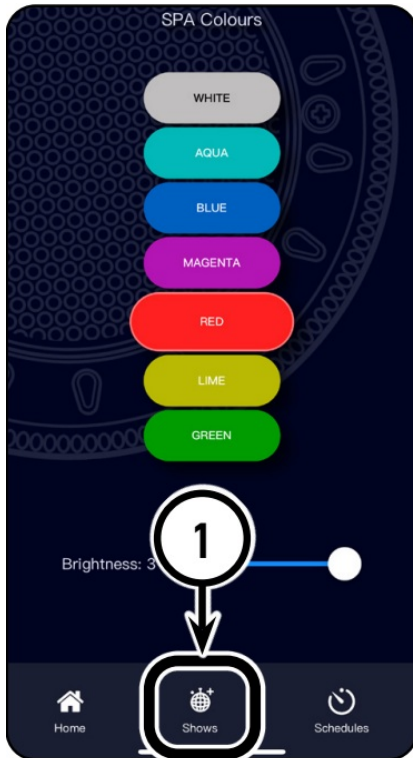


## COLOUR SHOWS

1. Tap the Show button to go to the Colour Shows menu.
2. Tap one of the four Colour Shows to change the output of the lights connected to the zone.



3. The speed of the Colour Show can be changed from 1 (slowest) to 3 (fastest) by moving the slider.
4. The brightness of the Colour show can be changed from 1 (dimmetst) to 3 (brightest) by moving the slider.
5. If your lights appear to be out of sync with each other, tap the “Sync” button to resynchronise the lights.

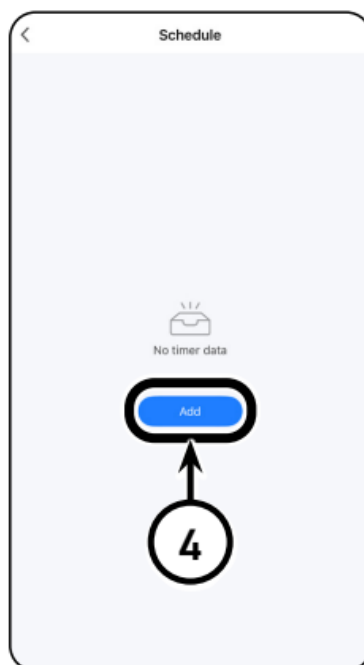


## SCHEDULING

1. Tap the Schedules button to go to the Schedules menu.
2. Tap the On/Off toggle to enable Schedules.
3. Tap either Zone 1 or Zone 2 to view the list of schedules and to Add/edit/remove schedules for that Zone.

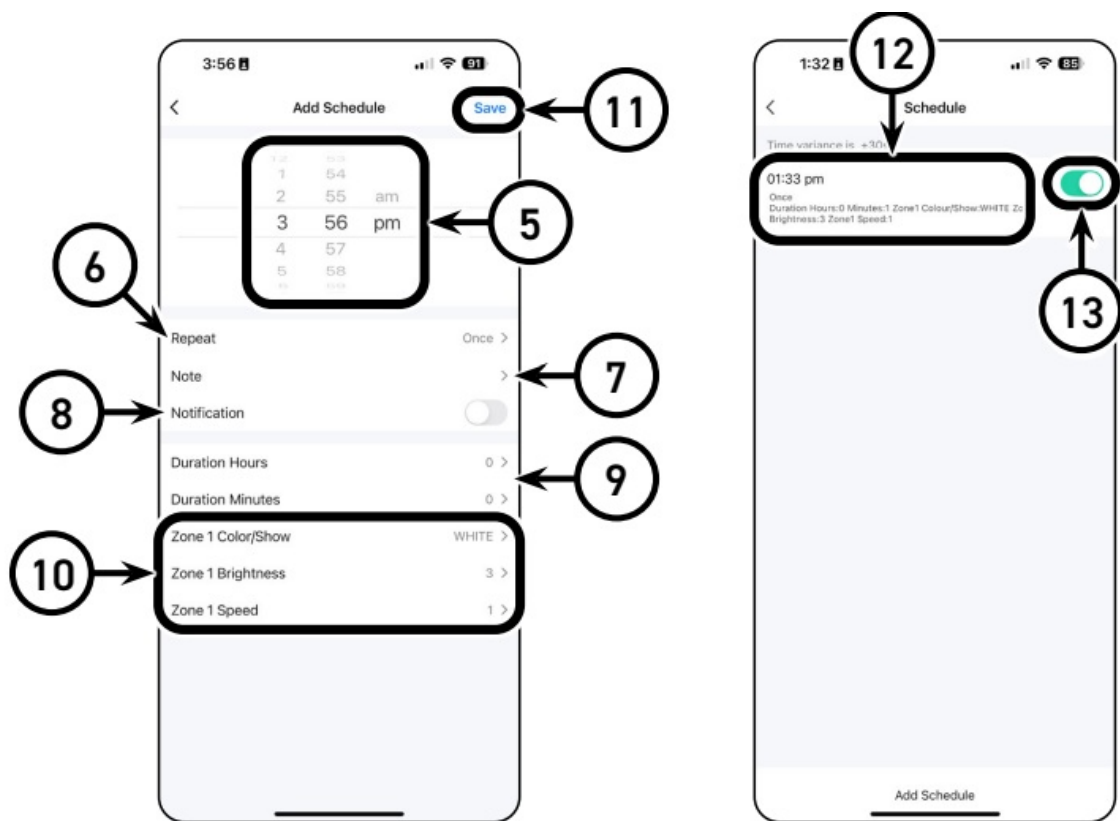


4. Tap the “Add” button to add a new schedule.



5. Set the start time for the schedule.
6. Set the days of the week that the schedule will repeat.
7. Add a note for this schedule (optional).
8. Tap the On/Off toggle to receive a notification when the schedule is activated.
9. Set the duration in hours and minutes for the schedule. (This is the length of time the lights will be on from the start time before turning off.)
10. Set the Colour/Show and the Brightness (1 dimmest to 3 brightest). Also, if selecting a Show, the speed can be set (1 slowest to 3 fastest).
11. After entering all the details of the schedule, tap “Save”.
12. When viewing the list of schedules, you can tap a schedule to edit it.
13. Tapping the On/Off toggle on a schedule will enable/disable it.





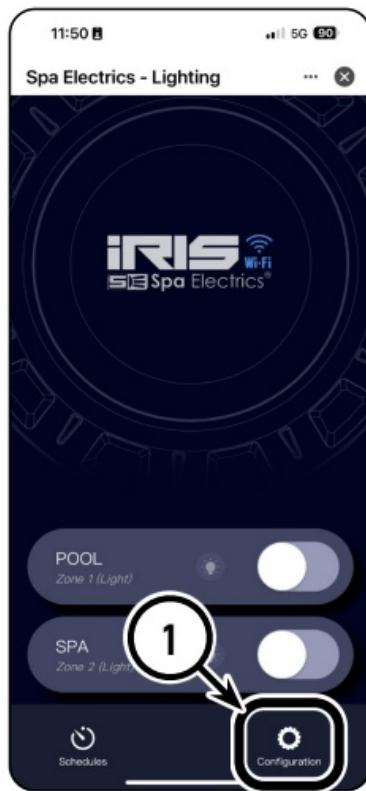
## ZONES

- The iRIS Wi-Fi Lighting Controller has two separate outputs, which correspond to two separate Zones within the app.
- These Zones can be operated independently and can, as an example, be used to operate swimming pool lights separately to spa lights.
- Some users may also use Zones to control lights with one Zone and turn on the other Zone's power to swimming pool accessories (see Accessory Devices section and Appendix 2).

## LINKING ZONES

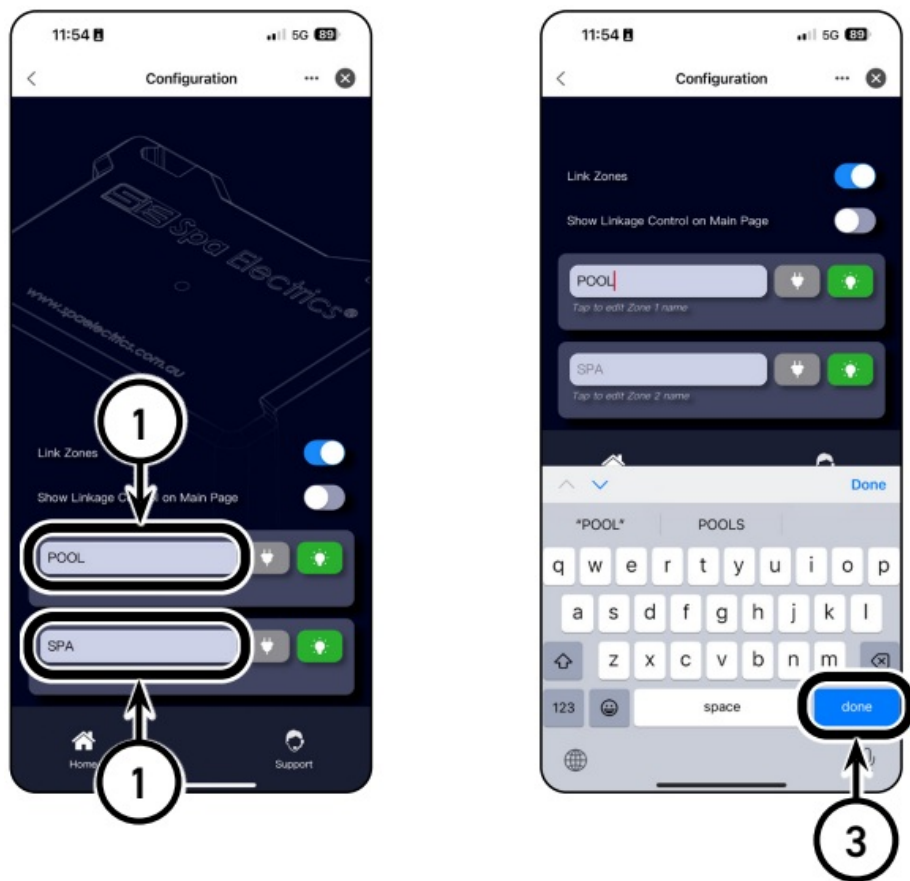
Zones can be linked so that Solid Colours/ Colour Shows/ Schedules selected in Zone 1 are automatically duplicated in Zone 2.

1. Tap Configuration to enter the Configuration menu.
2. Tap the "Link Zones" toggle button to link Zone 1 and Zone 2.



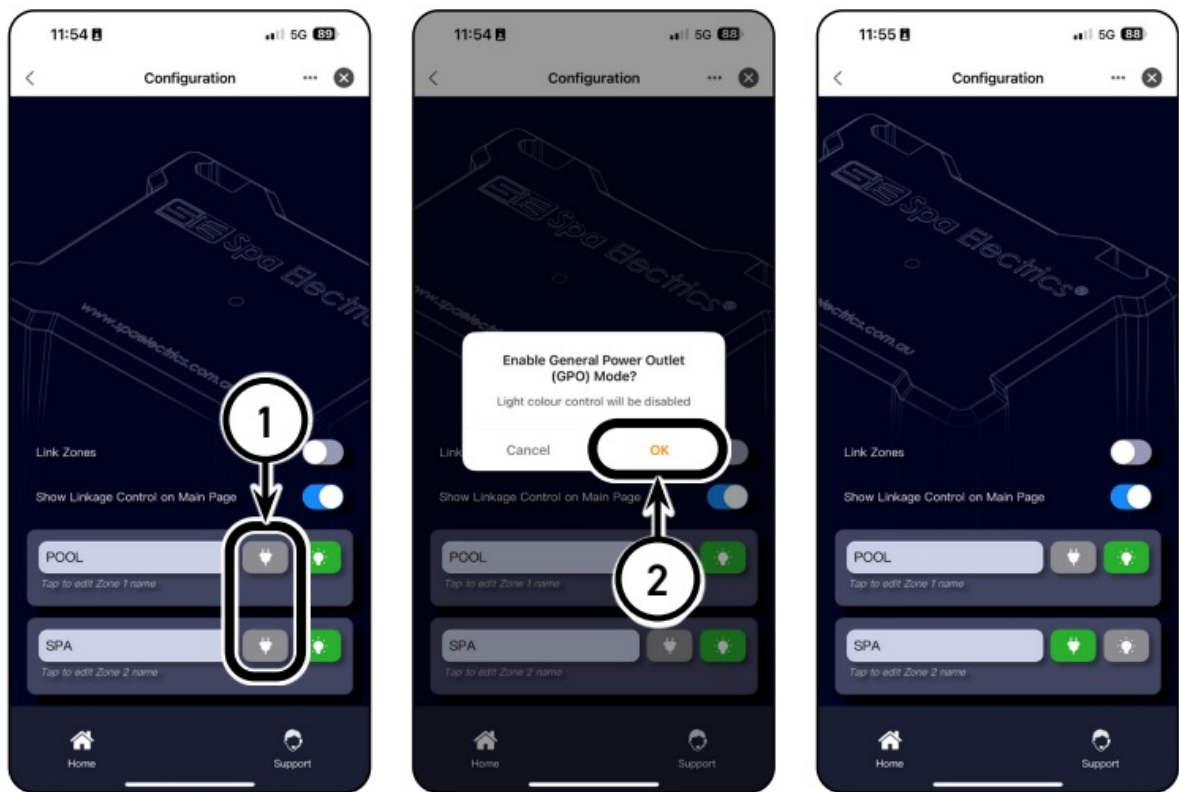
## RENAMING ZONES

1. Tap on one of the Zone names.
2. Enter the new name of the Zone.
3. Tap “done” to save the new name. (The appearance of the “done” button on keyboards may vary between devices. On Android devices, it may appear as an arrow pointing right, a tick symbol, or “Go”.)



## ACCESSORY DEVICES

- The iRIS Wi-Fi Lighting Controller can be used to power accessory devices such as blowers, vacuums, filters, heaters, etc. For example, you could connect your lights to Zone 1, and then connect your spa jet blower to Zone 2.
- See the Connecting to Transformers section of this document for a diagram of Zone 1 and 2 locations on the bottom of the iRIS Wi-Fi Lighting Controller.
- When connecting an accessory device to a Zone instead of a light transformer, that Zone should be set to G.P.O. mode in the Zone Configuration screen of the app.



## TECHNICAL SPECIFICATION

- **Input:** 230-240VAC – 50Hz
- **Output:** 2 X 240VAC – 50Hz switched
- **Max. Load:** 2400W MAX. TOTAL

## APPENDIX

1. **Guest Mode Operation:** All functions of the iRIS Wi-Fi Controller operate normally, including schedules. You can also receive notifications even in Guest Mode.  
Limitations of Guest Mode: Access to the iRIS Controller cannot be shared to other Smart Life app users/ accounts. If the Smart Life app is reinstalled or Guest Mode is exited, the iRIS Controller will need to be reconfigured, and existing settings and schedules will be lost.
2. **Accessory Devices:** Examples of accessory devices you may want to install to the iRIS Controller: blowers, vacuums, filters, heaters, etc.
  - **IMPORTANT NOTE:** The total maximum current for the iRIS Controller is 10A. The combined load across both G.P.O. must not exceed 10A (including any light transformers that are connected).

## TROUBLESHOOTING

CONDITION	CORRECTIVE ACTION
Colour selection not functioning correctly/ Wrong colours output	Go to Multi Plus Setup section of this document and follow the instructions
Different lights outputting different colours than each other or colour shows not in sync across all lights	Go to Colour Shows section of this document and follow step 5 to resynchronise the lights

## WARRANTY INFORMATION

Spa Electrics Pty Ltd, AUSTRALIA (Spa Electrics) grants the following limited warranty to the first person (“the owner”), for whom the lighting controller (“the product”) is installed.

- **A.** Spa Electrics will, at its option, repair or replace any defective part of the product during the first (12) TWELVE-month period or the stated warranty period in the product’s owner’s manual, commencing from the date of installation of the product.
- **B.** To claim this product warranty, you agree:
  1. To produce an original invoice or other proof of purchase document disclosing the purchase date or installation date.
  2. That Spa Electrics reserves the right to determine, in relation to each warranty claim, whether the Product shall be returned to Spa Electrics for repair or whether warranty service will be provided in the field.
  3. Should warranty service be provided in the field, and upon assessment it is deemed to be a non-warranty issue, any call-out charge fee will be charged to the owner.
  4. To notify Spa Electrics of any warranty-related issue as soon as reasonably possible after such issue becomes evident.
  5. To meet any other expenses associated with claiming this product warranty.
    1. **C.** This product warranty specifically excludes.
    2. **Any defects arising from:**
      - **a.** The improper installation, use or handling, or other improper dealings with the product.
      - **b.** Failure to observe and comply with the instructions for the installation and use of the product provided.

- **c.** The use of substitute or replacement parts not provided by Spa Electrics.
  - **d.** The product being opened, modified, or repaired by any unauthorized person.
  - **e.** The use of transformers not supplied by Spa Electrics or transformers that are not compliant with Product Installation Instructions and/or relevant Australian Standards/wiring rules for use with swimming pools.
  - **f.** Any damage caused by the external power supply (i.e., spikes/surges).
6. Removal and reinstallation of the product.
  7. The cost of returning the product to Spa Electrics.
  8. The repair or replacement of the product, except by Spa Electrics.
  9. Personal injury, property damage, or economic loss, however caused.
- This product warranty is offered in addition to any other rights and remedies you may have under law, which Spa Electrics cannot exclude.
  - To make a claim under this product warranty, please contact our Customer Service Department on 0397932299 or submit an online warranty claim at [www.spaelectrics.com.au/warranty](http://www.spaelectrics.com.au/warranty).

## PRODUCT SUPPORT AND INFORMATION

- **NOTE:** PLEASE STORE THIS MANUAL IN A SAFE PLACE FOR FURTHER REFERENCE
- © COPYRIGHT 2025 SPA ELECTRICS PTY. LTD. ALL RIGHTS RESERVED.
- **Telephone: 03 9793 2299 (Business hours 8:30 – 4:30)**
- **SALES ENQUIRIES**
- E. [sales@spaelectrics.com.au](mailto:sales@spaelectrics.com.au)
- **TECHNICAL SUPPORT**
- E. [tech@spaelectrics.com.au](mailto:tech@spaelectrics.com.au)
- [www.spaelectrics.com.au](http://www.spaelectrics.com.au)

## FAQ

Can the iRIS lighting system be used with any type of lights?

The iRIS lighting system is designed to be used with Spa Electrics MULTI PLUS

model lights. Ensure compatibility before use.

What should I do if I need to replace existing transformers?

For retrofit installations, consult a qualified electrician to disconnect existing transformers and replace them with compatible models like Spa Electrics LV25-12 or LV50-12.

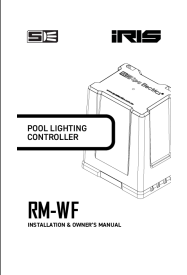
How far should the controller be installed from the pool/spa?

The unit should be installed at least 3.5 meters away from the pool/spa.

What should I do if I encounter wiring difficulties during installation?

If special wiring methods are needed, consult a professional electrician for proper installation guidance.

## Documents / Resources

	<a href="#">Spa Electrics RM-WF iRIS Wi-Fi Lighting Controller [pdf]</a> Instruction Manual RM-WF iRIS Wi-Fi Lighting Controller, RM-WF, iRIS Wi-Fi Lighting Controller, Wi-Fi Lighting Controller, Lighting Controller
---	--

## References

- [User Manual](#)

Spa

Electrics

iRIS Wi-Fi Lighting Controller, Lighting Controller, RM-WF, RM-WF iRIS Wi-Fi Lighting Controller, Spa Electrics, Wi-Fi Lighting Controller

---

## Leave a comment

Your email address will not be published. Required fields are marked \*

Comment \*

Name

Email

Website

☐ Save my name, email, and website in this browser for the next time I comment.

**Post Comment**

**Search:**

e.g. whirlpool wrf535swhz

**Search**

[Manuals+](#) | [Upload](#) | [Deep Search](#) | [Privacy Policy](#) | [@manuals.plus](#) | [YouTube](#)

This website is an independent publication and is neither affiliated with nor endorsed by any of the trademark owners. The "Bluetooth®" word mark and logos are registered trademarks owned by Bluetooth SIG, Inc. The "Wi-Fi®" word mark and logos are registered trademarks owned by the Wi-Fi Alliance. Any use of these marks on this website does not imply any affiliation with or endorsement.