




SP CONNECT SPC+, 52625 Universal Interface Mount Instruction Manual

[Home](#) » [SP CONNECT](#) » SP CONNECT SPC+, 52625 Universal Interface Mount Instruction Manual 

Contents

- [1 SP CONNECT SPC+, 52625 Universal Interface Mount](#)
- [2 Product Information](#)
- [3 Product Usage Instructions](#)
- [4 INSTALLATION](#)
- [5 Documents / Resources](#)
 - [5.1 References](#)
- [6 Related Posts](#)



SP CONNECT SPC+, 52625 Universal Interface Mount



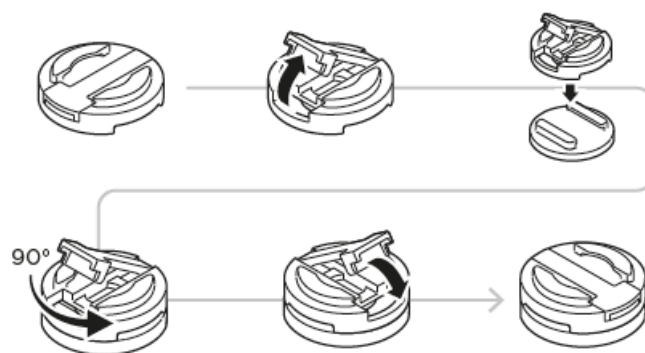
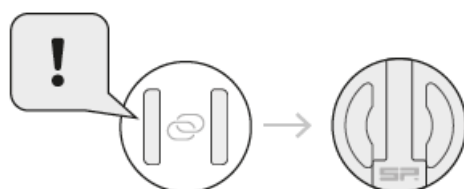
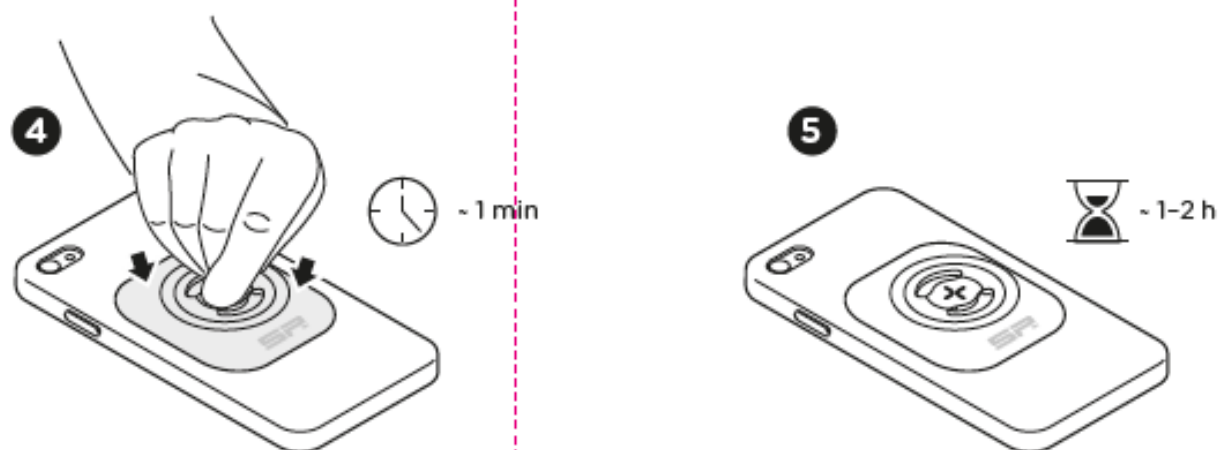
Product Information

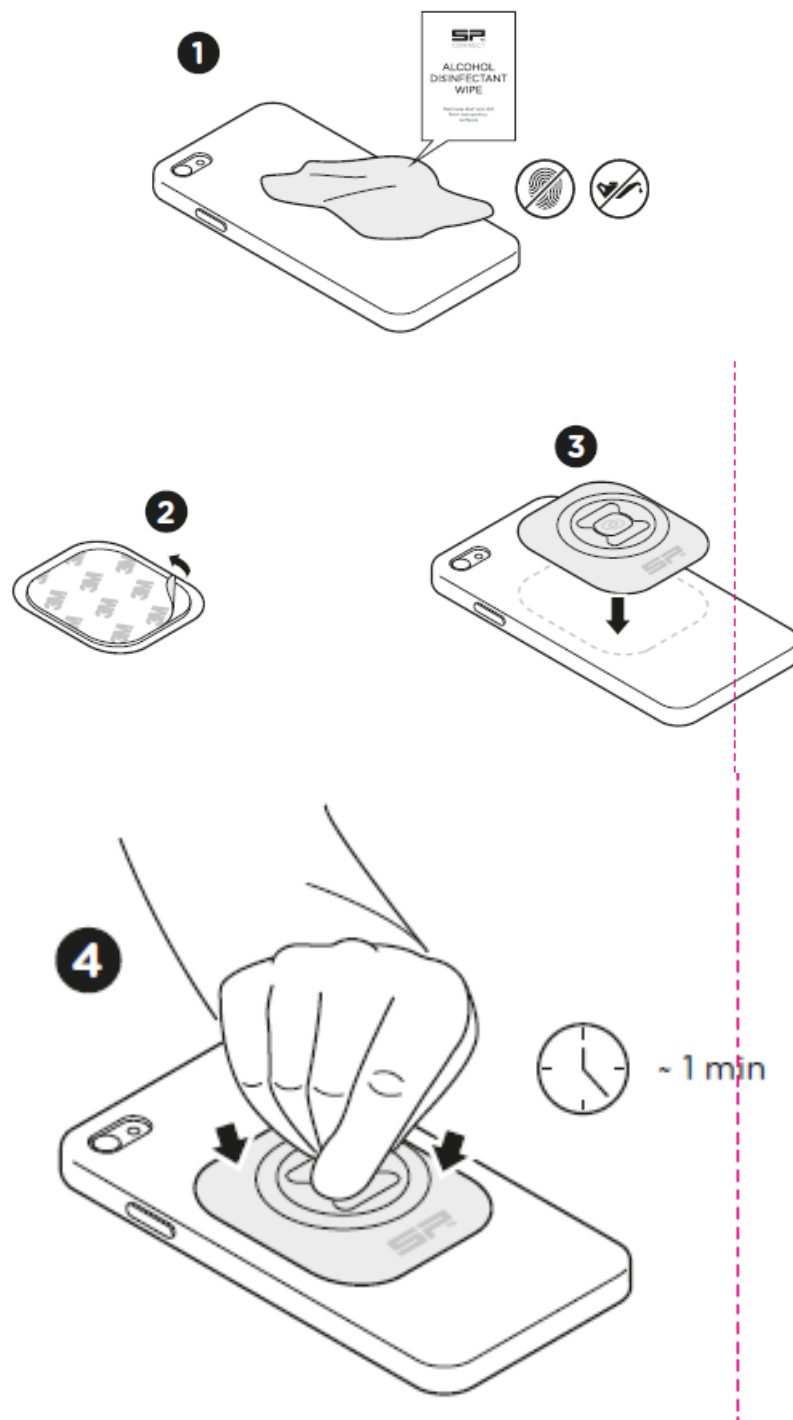
- The Universal Interface is a versatile product that allows you to securely attach your device or case to various flat surfaces. It features a 3MTM adhesive that provides strong adhesion to non-porous surfaces such as plastic, glass, metal, and painted surfaces. The Universal Interface is also compatible with silicone cases.
- However, it is important to note that the adhesive will not adhere to rough, uneven, or structured surfaces. To ensure proper adhesion, it is recommended to clean the surface with an alcohol wipe to remove any dirt or oily residue. Please be aware that the adhesive mount is not reusable, so it is crucial to position the adapter carefully during installation.
- It is recommended to use the Universal Interface only on phone cases as some smartphones may have nano-particle coatings that could come loose during use. If you are uncertain whether the Universal Interface will adhere to your device or case, please contact support@sp-connect.eu for further assistance.
- Usage of the Universal Interface is at your own risk. SP United Holding AG shall not be liable for any direct, indirect, punitive, incidental, special, or consequential damages resulting from the misuse of this product.

Product Usage Instructions

1. Clean the desired surface with an alcohol wipe to remove any dirt or oily residue.
2. Peel off the protective backing from the adhesive side of the Universal Interface.
3. Align and carefully stick the Universal Interface onto the cleaned surface, ensuring it is securely attached.
4. Press firmly on the Universal Interface for approximately one minute to ensure proper adhesion.
5. Allow the adhesive to set for at least one minute before attaching your device or case.

INSTALLATION








Remember to position the Universal Interface correctly as the adhesive mount is not reusable.
If you encounter any issues or have further questions, please contact support@sp-connect.eu for assistance.

Please note:

The 3M™ adhesive used on the Universal Interface will adhere to many non-porous flat surfaces such as plastic, glass, metal and painted surfaces. We have also achieved good results sticking it to silicone cases. It will not adhere to rough, uneven or structured surfaces. You will need a smooth surface of at least 2.16 x 2.56 inches 55 x 65 mm for the interface to be placed on. Make sure to clean the surface with an alcohol wipe before use to remove any dirt or oily residue. The adhesive mount cannot be re-used, so make sure to position the adapter carefully. We recommend only using the Universal Interface on phone cases as some smartphones have nano-particle coatings that repel the adhesive, or have removable battery covers that could come loose during use. If you are uncertain whether the UNIVERSAL INTERFACE will adhere to your device or case, please email: support@sp-connect.eu.

Use at own risk. In no event shall SP United Holding AG be liable for any direct, indirect, punitive, incidental, special consequential damages, to property, whatsoever arising out of or connected with the use or misuse of this product.

Documents / Resources

	SP CONNECT SPC+, 52625 Universal Interface Mount [pdf] Instruction Manual SPC 52625 Universal Interface Mount, SPC 52625, Universal Interface Mount, Interface Mount, Mount
---	---

References

-  [_vacatures en zzp opdrachten in techniek - Connect](#)
-  [NECT IT support](#)