



# SP CONNECT MAN148 SPC+ Universal Charging Clamp User Manual

[Home](#) » [SP CONNECT](#) » SP CONNECT MAN148 SPC+ Universal Charging Clamp User Manual 

## Contents

- [1 SP CONNECT MAN148 SPC+ Universal Charging Clamp](#)
- [2 Product Information](#)
- [3 Setup Tips for Outdoor Navigation](#)
- [4 INSTRUCTIONS](#)
- [5 FCC Statement](#)
- [6 Technical Specifications](#)
- [7 Documents / Resources](#)



**SP CONNECT MAN148 SPC+ Universal Charging Clamp**



## Product Information

The Universal Charging Phone Clamp is a wireless phone charger designed for outdoor use. It is compatible with phones that support QC 2.0/3.0 technology and can provide a maximum charge power of 15W. The charge power may vary depending on the power source, phone model, temperature, and other factors. The device has an IP65 rating, making it resistant to dust and water.

### Technical Specifications:

- Input: QC 2.0/3.0
- Wireless Output: Max 15W
- Recommended Operating Temperature: Not specified
- Power Consumption: 8-20 mA (Standby)

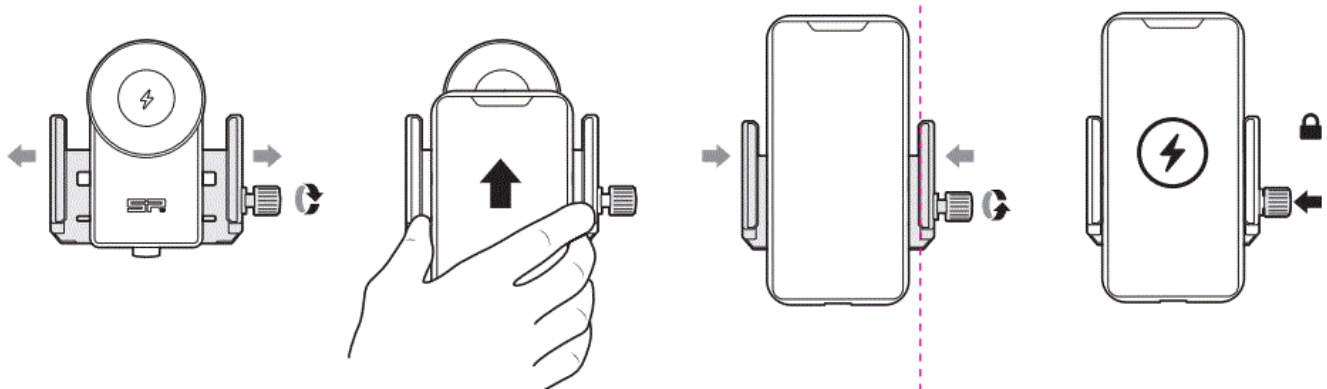
### Setup Tips for Outdoor Navigation:

using the Universal Charging Phone Clamp for outdoor navigation, please take note of the following tips:

- Make sure the device is securely attached to your vehicle or bike.
- Ensure that the phone clamp is properly connected to a power source.
- Keep the device away from extreme temperatures as it may affect charging efficiency.

### FCC Statement:

This device complies with Part 15 of the FCC Rules. It should not cause harmful interference and must accept any interference received, including FCC radiation exposure limits set forth for an uncontrolled environment. The device should be installed and operated with a minimum distance of 20cm between the radiator and your body.



### ATTENTION!

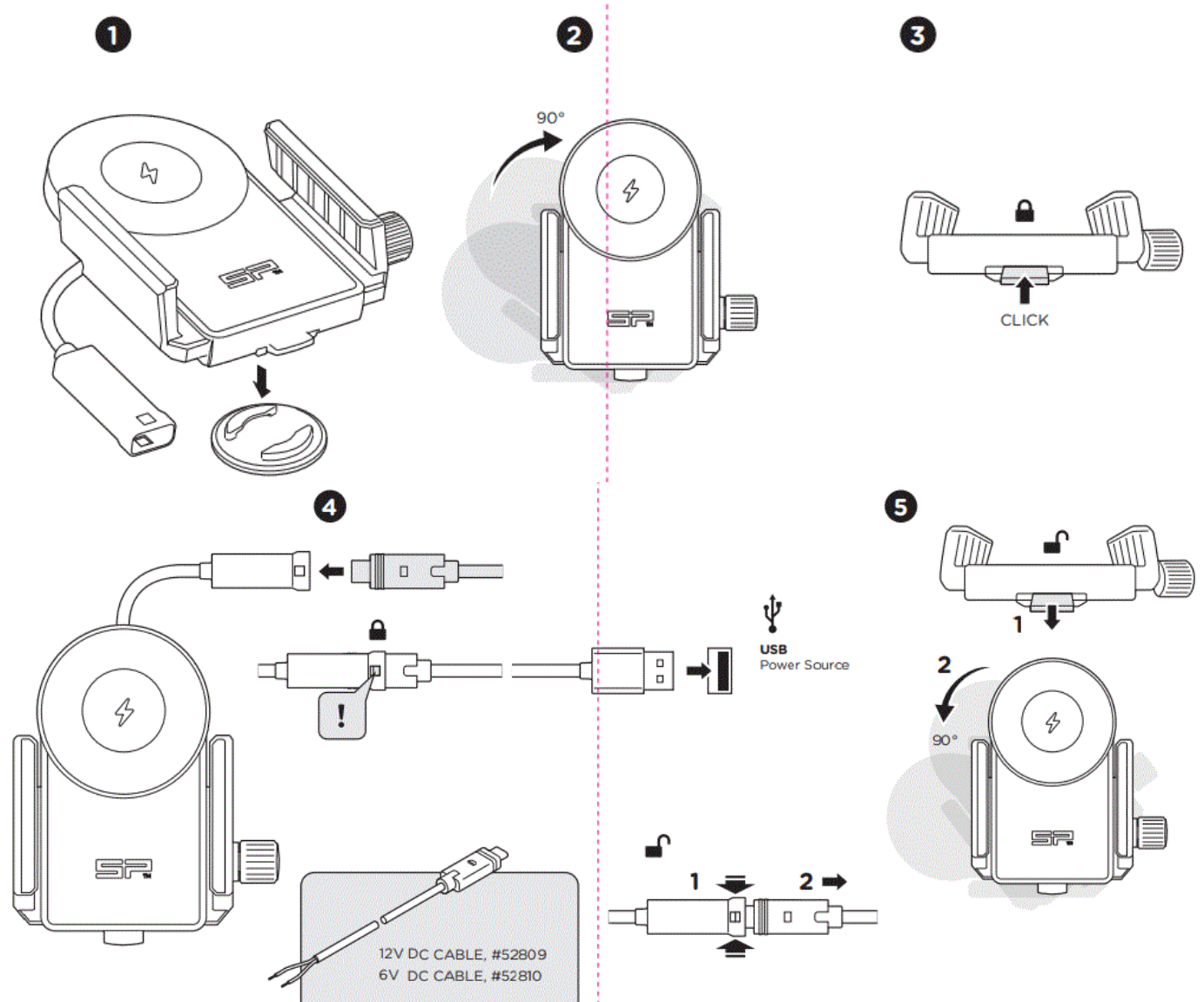
- Cut off the power supply when not in use.
- Avoid use in a humid or high-temperature environment if possible.
- Don't hit, disassemble or re-assemble the product – this may lead to malfunction.
- For waterproof connection use compatible SP Connect™ cables only.
- High Temperatures can reduce charge efficiency.
- Smartphone power consumption can exceed charge power. Set up the phone appropriately!

### Setup Tips for Outdoor Navigation

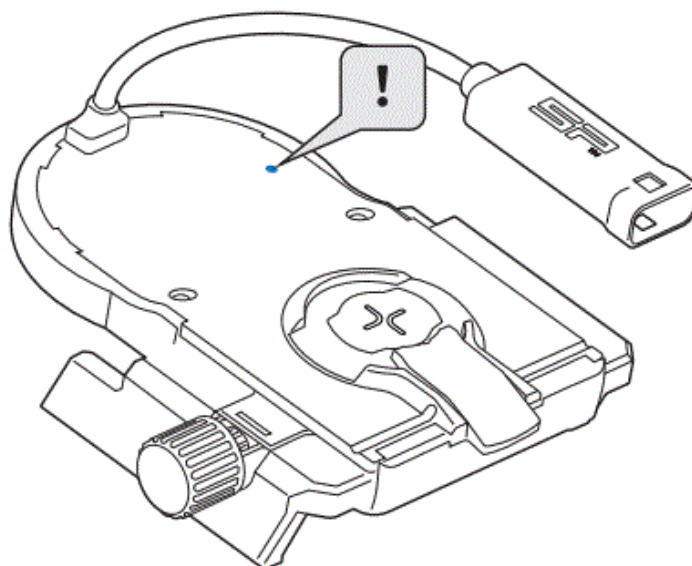
- Outdoor navigation at high temperatures reduces charge efficiency.




- Use adaptive screen brightness, consider using night mode, switch off the screen occasionally.
- Use locally stored maps to avoid data traffic and power consumption.
- Turn off data traffic if not needed.
- Turn off unnecessary apps running in the background.
- Turn off the Wi-Fi antenna while you are moving.

## INSTRUCTIONS



6



 RED	Ready
 BLUE	Charging
 RED FLASH	Error

## FCC Statement

1. This device complies with Part 15 of the FCC Rules. Operation is subject to the following two conditions:
  1. This device may not cause harmful interference, and
  2. This device must accept any interference received, including interference that may cause undesired operation. 2
2. Changes or modifications not expressly approved by the party responsible for compliance could void the user's authority to operate the equipment

**NOTE:** This equipment has been tested and found to comply with the limits for a Class B digital device, pursuant to Part 15 of the FCC Rules. These limits are designed to provide reasonable protection against harmful interference in a residential installation. This equipment generates uses and can radiate radio frequency energy and, if not installed and used in accordance with the instructions, may cause harmful interference to radio communications. However, there is no guarantee that interference will not occur in a particular installation. If this equipment does cause harmful interference to radio or television reception, which can be determined by turning the equipment off and on, the user is encouraged to try to correct the interference by one or more of the following measures:

- Reorient or relocate the receiving antenna.
- Increase the separation between the equipment and the receiver.
- Connect the equipment into an outlet on a circuit different from that to which the receiver is connected.
- Consult the dealer or an experienced radio/ TV technician for help.

## FCC Radiation Exposure Statement

This equipment complies with FCC radiation exposure limits set forth for an uncontrolled environment. This equipment should be installed and operated with a minimum distance 20cm between the radiator & your body.

Technical Specifications

Input	USB-C: USB-PD USB-A: 5V/2A • 5V/3A QC 2.0/3.0
Wireless Output	Max 15W <i>Charge power is variable and depends on power source, phone model, temperature, etc.</i>
Recommended Operating Temperature	-10—40° C <i>Charge performance will drop above ~40° C</i>
Power Consumption	8—20 mA (Standby)

**IP65 RATED:** No ingress of dust; complete protection against contact (dust tight). Water projected by a nozzle (6.3 mm) against enclosure from any direction shall have no harmful effects. Minimum operating temperature: 0°C / 32°F



Documents / Resources

	<a href="#">SP CONNECT MAN148 SPC+ Universal Charging Clamp</a> [pdf] User Manual MAN148, 52809, 52810, MAN148 SPC Universal Charging Clamp, MAN148, SPC Universal Charging Clamp, Universal Charging Clamp, Charging Clamp, Clamp
---	---