



SOWO B1rW8H-UhML Small Shower Speaker Instruction Manual

[Home](#) » [SOWO](#) » SOWO B1rW8H-UhML Small Shower Speaker Instruction Manual 

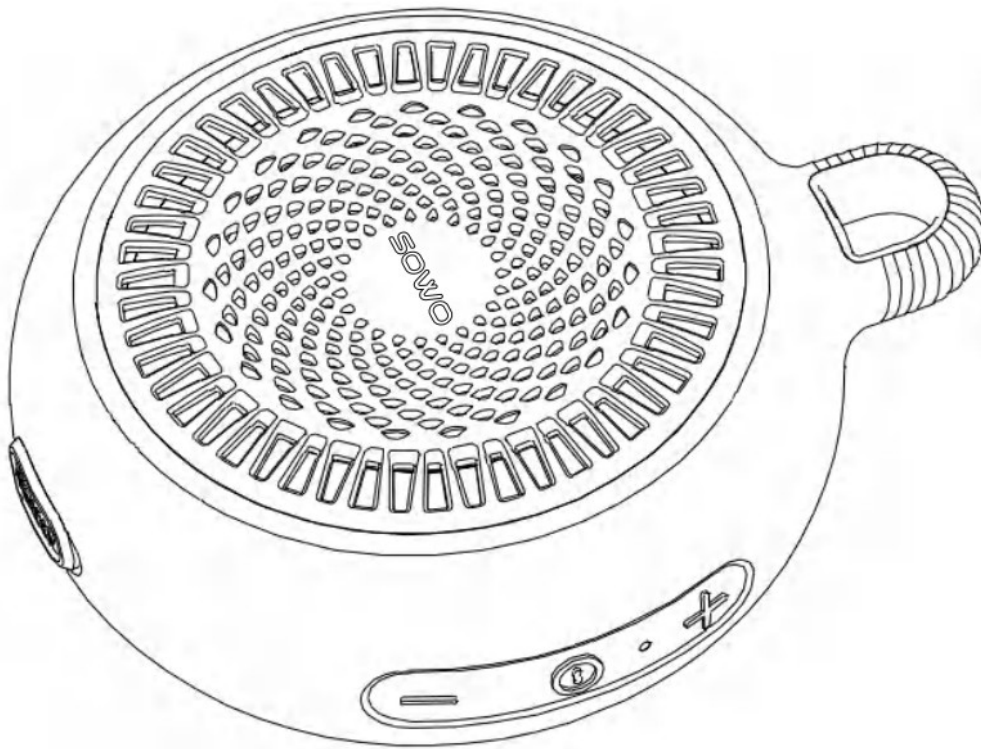


B1rW8H-UhML Small Shower Speaker Instruction Manual

Contents

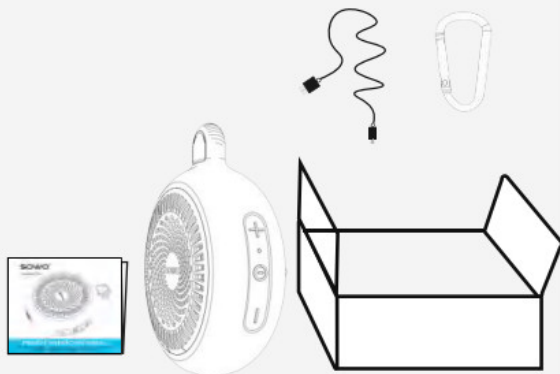
- [1 B1rW8H-UhML Small Shower Speaker](#)
- [2 Tech Specs](#)
- [3 IMPORTANT SAFETY INSTRUCTIONS:](#)
- [4 FCC Requirement:](#)
- [5 Documents / Resources](#)
 - [5.1 References](#)

B1rW8H-UhML Small Shower Speaker

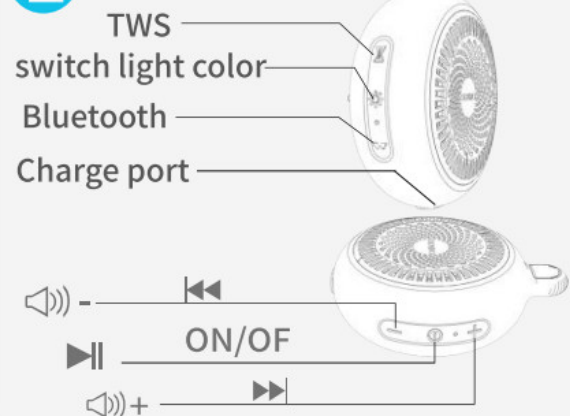


produkt bedienungsanleitung

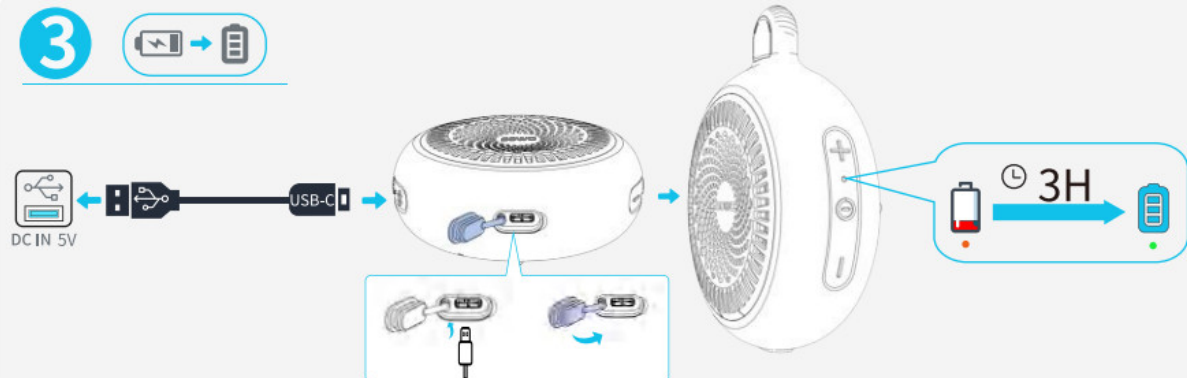
1

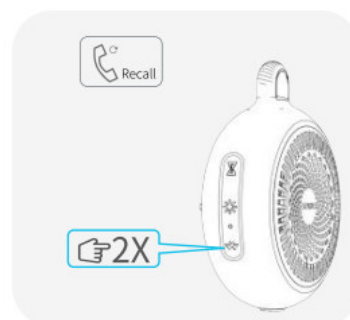
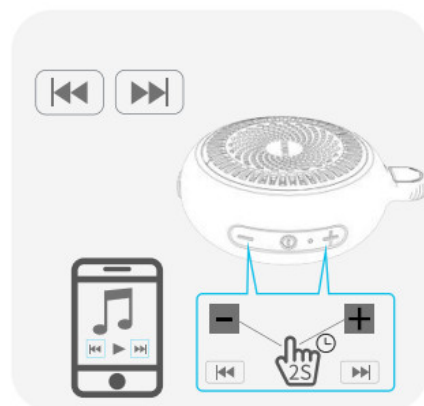
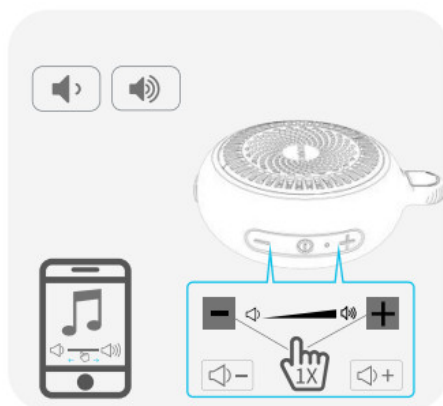
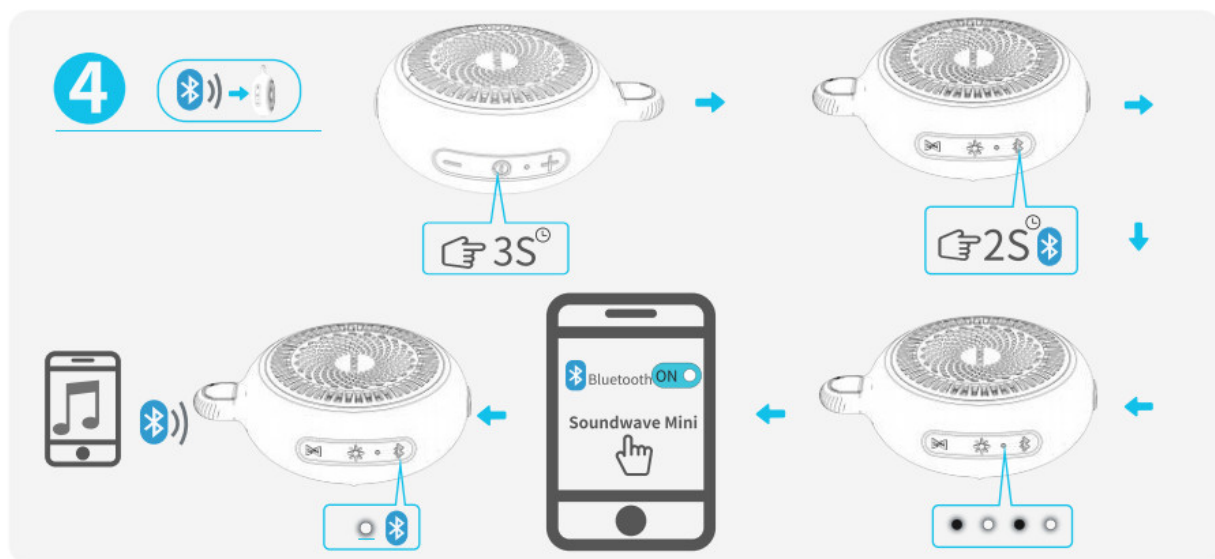


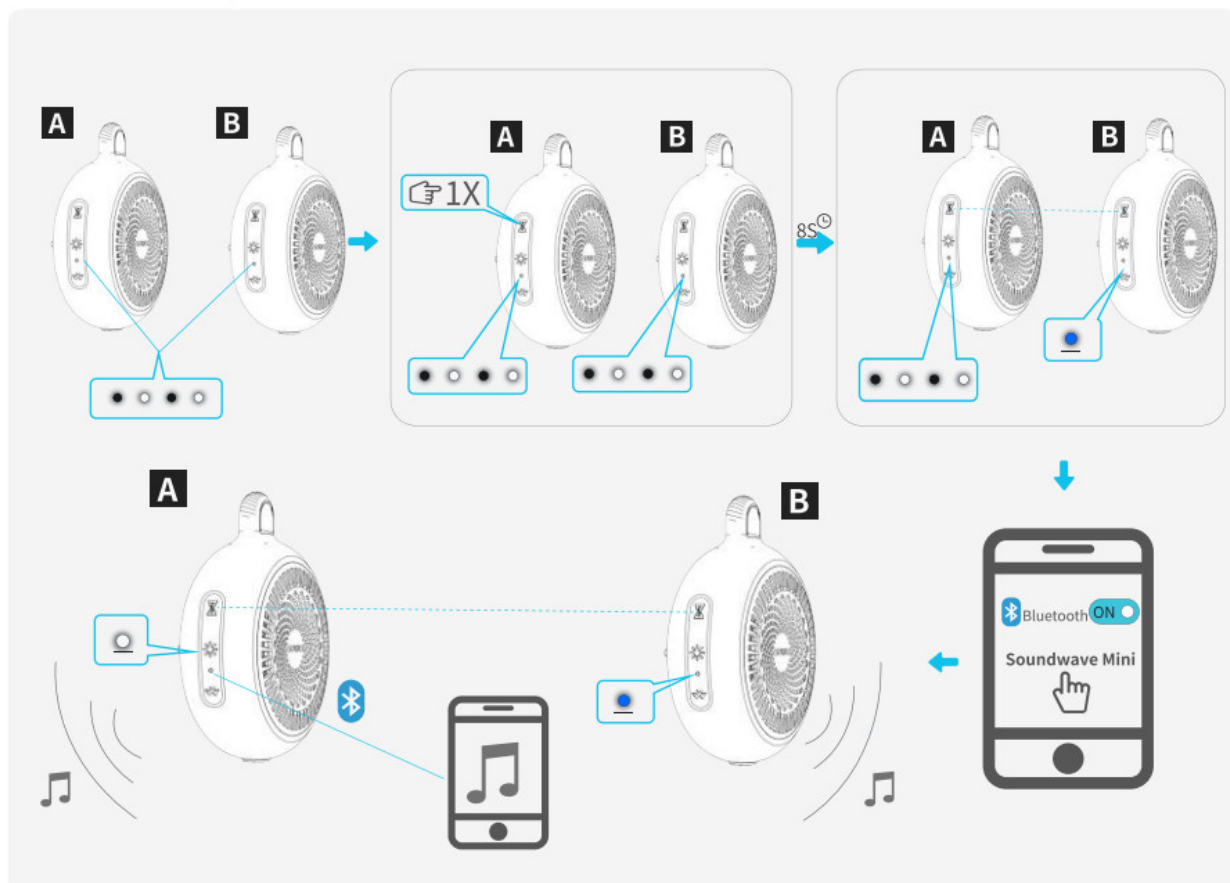
2



3







Tech Specs

Bluetooth Version:	V5.3
Transducer:	50mm 30 5W
Rated Power:	5W
Frequency Response:	80HZ-20KHZ
Signal-to-Noise Ratio:	72dB
Battery Type:	3.7V 1500mAh
Battery Charging Time:	about 3 hours
Music Playtime:	Up to 12 Hours (veries by volume level and audio content)
Wireless Transmission Distance:	Up to 33 ft (10M)
Charging:	5V700mA
Dimension (W x D x H):	c1)98mm*42mm
Weight:	186g

To extend battery life, fully charge at least once every 3 months. Battery life will vary according to usage patterns and environmental conditions.

Do not expose the SOWO product to liquids without removing all cable connections and closing the cap tightly. Do

not expose the SOWO product to water while charging. It may cause permanent damage to the speaker or product, and to the power source.

IMPORTANT SAFETY INSTRUCTIONS:

For all the products:

1. Read and follow these instructions.
2. Keep these instructions.
3. Heed all warnings
4. Follow all instructions.
5. Do not block any ventilation openings. Install this product according to the instructions.
6. Do not install this product near any heat sources such as radiators, heat recorders, or other devices (including amplifiers) that produce heat.
7. Do not defeat the safety purpose of the polarised or grounding plug. A polarised plug has two blades with one wider than the other. A grounding plug has two blades and a third grounding prong. The wide blade or the third prong | provided for your safety. If the plug does not fit into your outlet, consult an electrician to replace the outdated outlet.
8. Protect the power cord from being stepped on or pinched, especially at plugs, receptacles and the point where they exit from the device.
9. Use only attachments/accessories specified by the manufacturer.
10. Unplug this device during lighting storms or when not used for long periods of time.
11. To disconnect this device from the AC mains completely, disconnect the power supply card plug from the AC receptacle.
12. The mains plug of the power supply cord shall remain readily operable.
13. Do not expose batteries to excessive heat such as sunshine, fire or the like.
14. This device is intended to be used only with the power supply and/or charging cable provided by the manufacturer.

FCC Requirement:

Any changes or modifications not expressly approved by the party responsible for compliance could void the user's authority to operate the equipment.

This device complies with Part 15 of the FCC Rules. Operation is subject to the following two conditions:

- (1) this device may not cause harmful interference, and
- (2) this device must accept any interference received, including interference that may cause undesired operation.

Note: This equipment has been tested and found to comply with the limits for a Class B digital device, pursuant to Part 15 of the FCC Rules. These limits are designed to provide reasonable protection against harmful interference in a residential installation. This equipment generates, uses, and can radiate radio frequency energy, and if not installed and used in accordance with the instructions, may cause harmful interference to radio communications. However, there is no guarantee that interference will not occur in a particular installation. If this equipment does cause harmful interference to radio or television reception, which can be determined by turning the equipment off and on, the user is encouraged to try to correct the interference by one or more of the following measures:

- Reorient or relocate the receiving antenna.
- Increase the separation between the equipment and receiver.
- Connect the equipment into an outlet on a circuit different from that to which the receiver is connected.
- Consult the dealer or an experienced radio/TV technician for help.



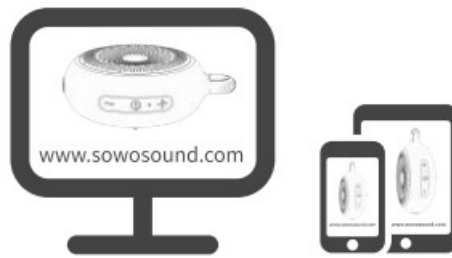
Speaker

Copyright 2021 SOWO Inc. All rights reserved.

Bluetooth is a registered trademark of Bluetooth SIG, Inc.

Compatible with Android and Apple. "Android" is a trademark of Google Inc.

"Apple" is a trademark of Apple inc.



www.sowosound.com



Service Contact : service@sowosound.com




Official Website : www.sowosound.com



FCC ID : 2APCP-S06

Documents / Resources

	<p>SOWO B1rW8H-UhML Small Shower Speaker [pdf] Instruction Manual B1rW8H-UhML, B1rW8H-UhML Small Shower Speaker, Small Shower Speaker, Shower Speaker, Speaker</p>
---	--

References

- [User Manual](#)