

MCD5600 Stereo  
System with Turntable  
DAB plus Double  
Cassette CD Player



# soundmaster MCD5600 Stereo System with Turntable DAB plus Double Cassette CD Player User Manual

[Home](#) » [soundmaster](#) » soundmaster MCD5600 Stereo System with Turntable DAB plus Double Cassette CD Player User Manual 

## Contents

- 1 soundmaster MCD5600 Stereo System with Turntable DAB plus Double Cassette CD Player
- 2 ENVIRONMENTAL PROTECTION
- 3 LOCATIONS OF CONTROLS
- 4 CONNECTIONS OF SPEAKER BOX
- 5 BASIC OPERATIONS
- 6 CD – MP3 / USB OPERATION
- 7 TURNTABLE OPERATION
- 8 GENERAL OPERATION
- 9 USB RECORDING
- 10 TECHNICAL SPECIFICATIONS
- 11 Documents / Resources
  - 11.1 References



**soundmaster MCD5600 Stereo System with Turntable DAB plus Double Cassette CD Player**



## ENVIRONMENTAL PROTECTION



Do not dispose of this product with the normal household waste at the end of its life cycle. Return it to a collection point for the recycling of electrical and electronic devices. This is indicated by the symbol on the product, user manual or packaging. The materials are recyclable according to their labeling. By reusing materials or other forms of recycling old devices and packaging, you are making an important contribution to protecting our environment. If necessary, remove batteries and personal data before disposal free of charge and ask your local authority about the responsible disposal point.



**This symbol indicates the presence of dangerous voltage inside the enclosure, sufficient enough to cause electric shock.**



**This symbol indicates the presence of important operating and maintenance instructions for the device**

Used batteries are hazardous waste and NOT to be disposed of with the household waste! As a consumer you are legally obligated to return all batteries for environmentally responsible recycling – no matter whether or not the batteries contain harmful substances\*)

Return batteries free of charge to public collection points in your community or shops selling batteries of the respective kind. Only return fully discharged batteries \*) marked Cd = cadmium, Hg = mercury, Pb = lead

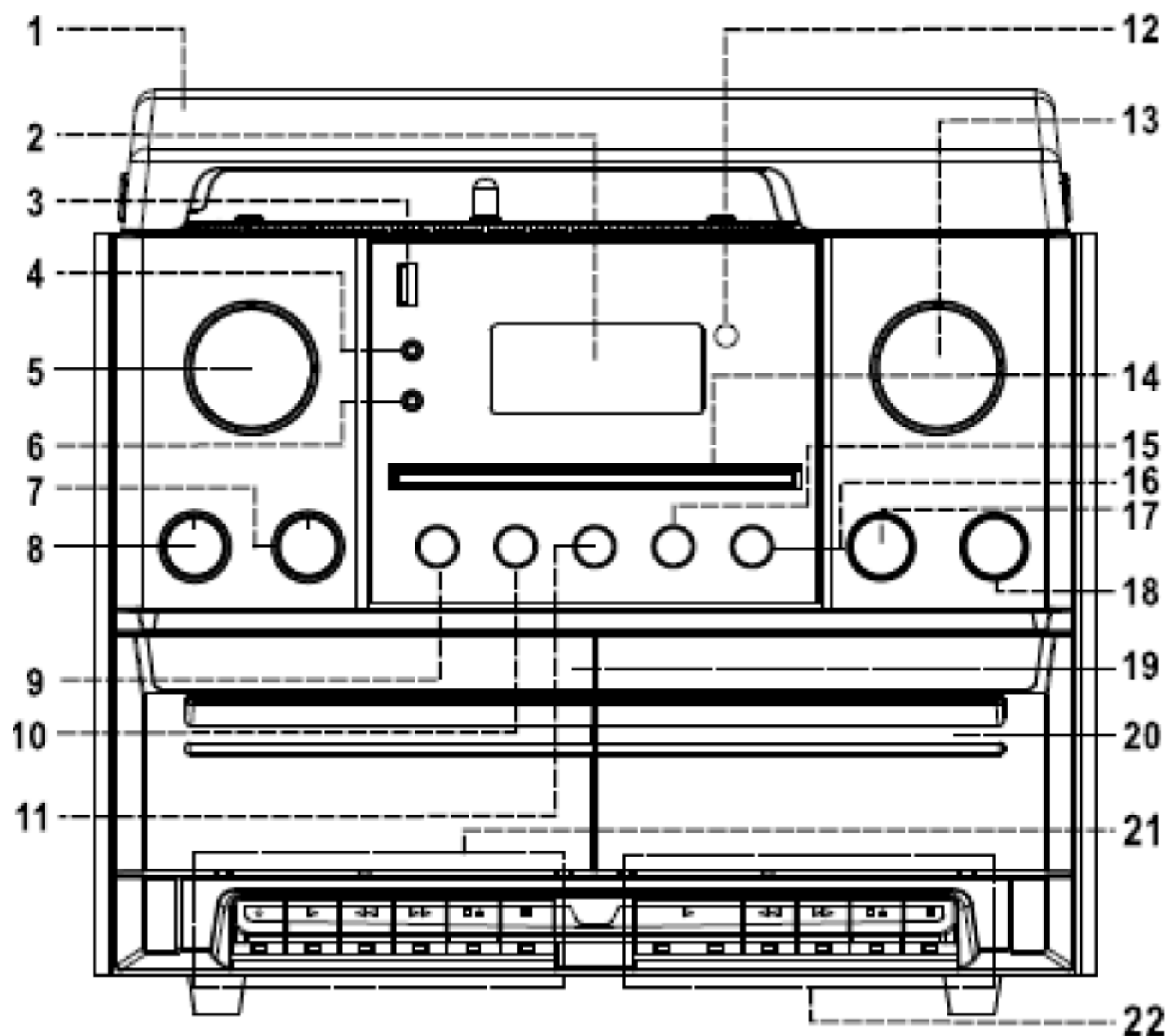
- Only use mercury and cadmium-free batteries.
- Used batteries are hazardous waste and NOT to be disposed of with the household waste!!!
- Keep batteries away from children. Children might swallow batteries.
- Contact a physician immediately if a battery was swallowed.
- Check your batteries regularly to avoid battery leakage.
- Batteries shall not be exposed to excessive heat such as sunshine, fire or the like.
- CAUTION: Danger of explosion if battery is incorrectly replaced
- Replace only with the same or equivalent type

**To prevent possible hearing damage, do not listen at high volume levels for long periods**

- Use the device in dry indoor environments only.
- Protect the device from humidity.
- This apparatus is for moderate climates areas use, not suitable for use in tropical climates countries.
- No objects filled with liquids, such as vases, shall be placed on the apparatus.
- The mains plug or an appliance coupler is used as the disconnect device, the disconnect devices shall remain readily operable.
- Connect this device to a properly installed and earthed wall outlet only. Make sure the mains voltage corresponds with the specifications on the rating plate.
- Make sure the mains cable stays dry during operation. Do not pinch or damage the mains cable in any way.
- A damaged mains cable or plug must immediately be replaced by an authorized service center.
- In case of lightning, immediately disconnect the device from the mains supply.
- Children should be supervised by parents when using the device.
- Clean the device with a dry cloth only.
- Do NOT use CLEANING AGENTS or ABRASIVE CLOTHS!
- Do not expose the device to direct sunlight or other heat sources.
- Install the device at a location with sufficient ventilation in order to prevent heat accumulation.
- Do not cover the ventilation openings!
- Install the device at a safe and vibration-free location.
- Install the device as far away as possible from computers and microwave units; otherwise radio reception may be disturbed.
- Do not open or repair the enclosure. It is not safe to do so and will void your warranty. Repairs only by authorized service/ customer center.
- No naked flame sources, such as lighted candles, should be placed on the unit.
- When you are necessary to ship the unit store it in its original package. Save the package for this purpose.
- In case of malfunction due to electrostatic discharge or fast transient (burst), remove and reconnect the power supply.
- If the unit is not using for a long period of time, disconnect it from the power supply by unplugging the power plug. This is to avoid the risk of fire.

## **LOCATIONS OF CONTROLS**

### **FRONT VIEW**



1. Dust cover
2. LCD display
3. USB socket
4. 3.5 mm AUX-IN jack
5. ENTER / SCROLL / SELECT Selection and control knob
6. 3.5 mm Headphone jack
7. TREBLE Trebles control
8. BASS Bass control
9. INFO Information
10. ⏮ Title & station back
11. ⏭ Title & station forward
12. Remote control sensor
13. MODE / VOLUME On/Off function and Volume knob
14. CD Door
15. Stop button
16. Play/pause
17. CD Door open/close button

18. REC record

- 15) ■ Stop button
- 16) ►|| Play/pause
- 17) ▲ CD Door open/close button
- 18) ● **REC** record

19. Cassette deck (1) door

20. Cassette deck (2) door

21. Tape (1) control keys

22. Tape (2) control keys

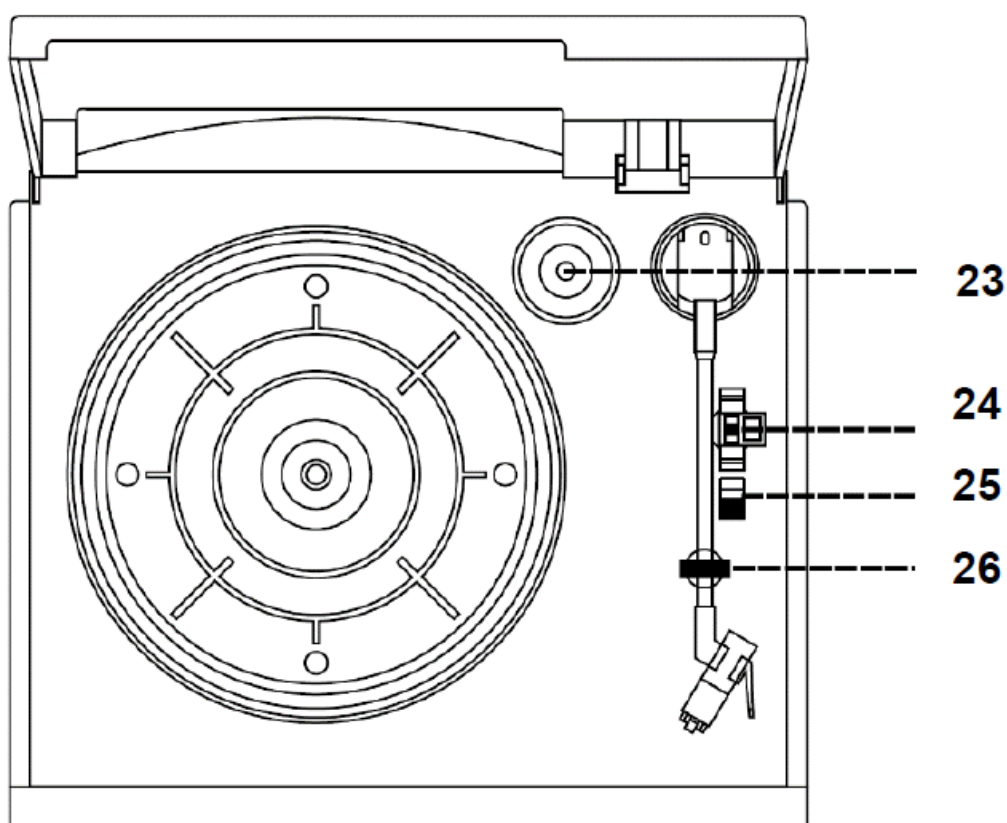
- Record (only deck1)
- Playback
- ◀◀ Rewind
- ▶▶ Fast forward
- ▲ Stop/eject
- || Pause

23. Spindle adaptor

24. Turntable speed selector

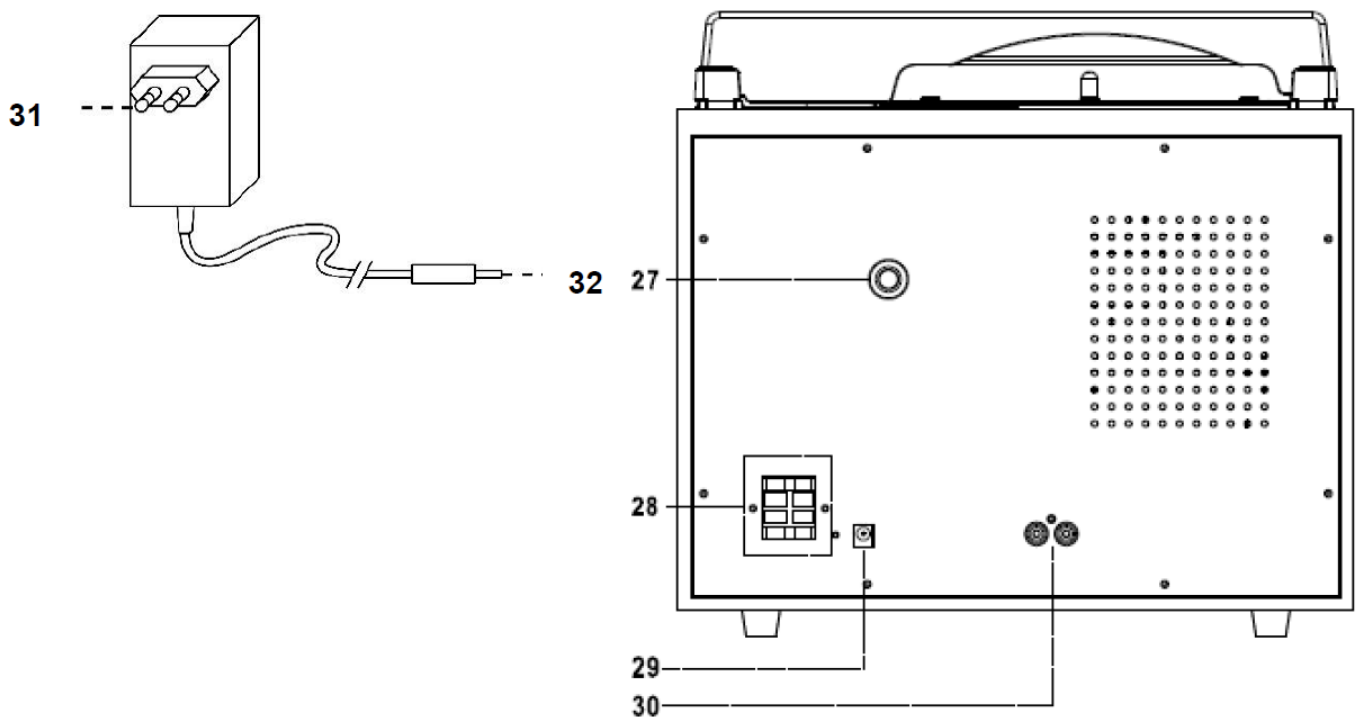
25. Auto stop on/off switch

26. Tone arm rest



**BACK VIEW AND AC/DC ADAPTOR**

- 27. DAB+ / FM antenna
- 28. Speaker clip connection
- 29. DC Socket
- 30. LINE OUT Sockets (R + L)
- 31. AC/DC Adaptor
- 32. DC Plug



## CONNECTIONS OF SPEAKER BOX

Connect the speaker cable to the speaker terminal located on the rear side of the unit. Put the red cable into the red terminal and the black cable in the black terminal of the speaker position (left and right).

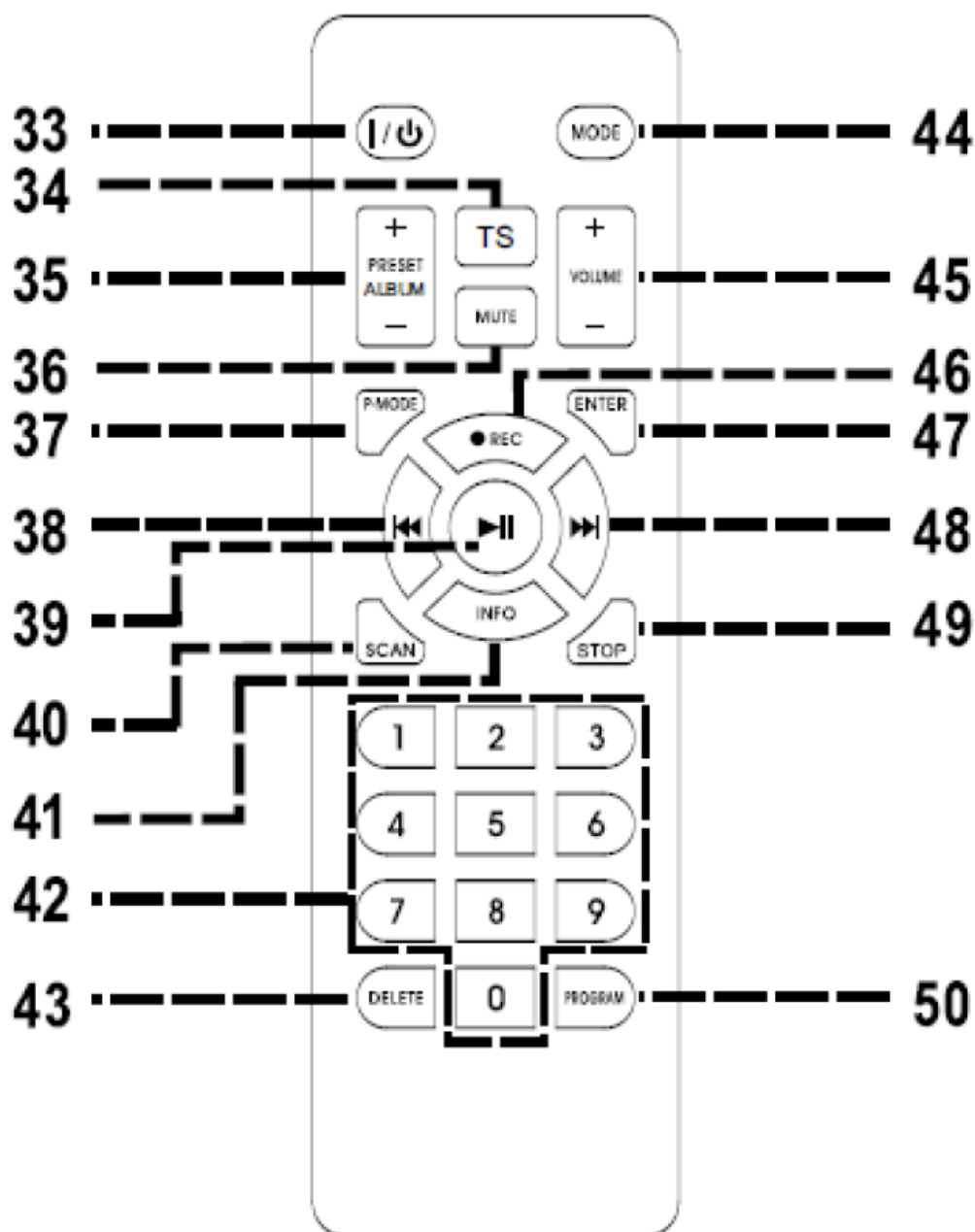
### CONTENT OF DELIVERY

- Main unit
- Instruction Manual
- Power supply
- Antenna
- Remote control
- 2 x Speaker box

Ensure the AC/DC Adaptor, Remote Control, DAB/FM antenna have been taken out of the packaging

- 33. Power on/standby
- 34. TS Track separation
- 35. PRESET / ALBUM +/-  
Preset and album selection
- 36. MUTE Mute speakers
- 37. P.MODE – Repeat / Random

- 38. Track / station backwards
- 39. – Play/Pause button
- 40. SCAN Station search
- 41. INFO Title & station information's
- 42. 0-9 Direct title selection
- 43. DELETE USB title delete
- 44. MODE Function selection
- 45. VOL +/- Volume +/-
- 46. REC USB record
- 47. ENTER confirm
- 48. ►► Track / station forward
- 49. STOP CD/USB playback stop
- 50. PROGRAM Preset and Title programming

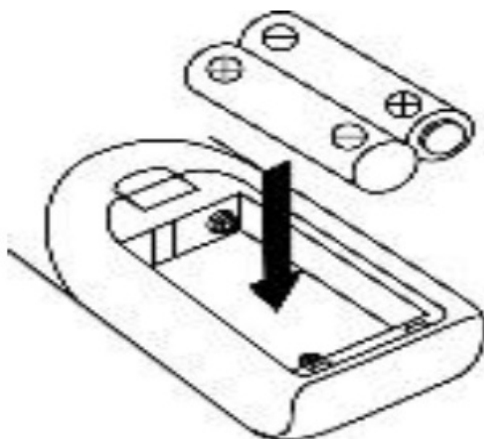


#### BATTERY INSTALLATION OF REMOTE CONTROL

The remote control requires 2 pcs AAA dry battery.

Hold and pressing the clasp with the thumb in the right direction of arrow in the illustration, and take out the battery compartment by sliding with forefinger in the direction to yourself.

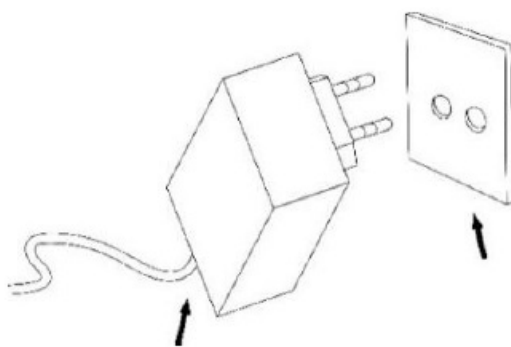
Take out the battery compartment from the remote control. Install 2 pcs AAA dry battery in the compartment with the positive polarity upturned level hold and push the battery compartment into the remote control lightly. It's okay once hear a click.



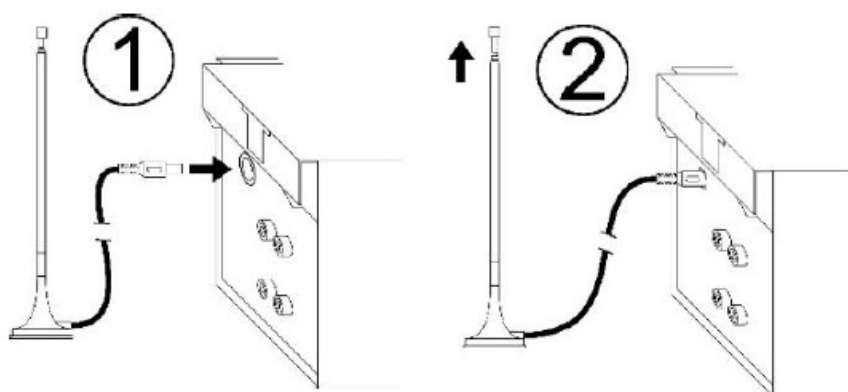
## POWER SOURCE

Connect the DC jack to the DC socket of the unit.

This system is designed to operate on normal 230V 50Hz AC only. Attempting to operate from any other power source may cause damage to the system, and such damage is not covered by your warranty. Connect the provided DAB/FM antenna to the antenna socket and align it for best reception.



AC/DC Adaptor    AC outlet



## BASIC OPERATIONS



## **POWER ON/OFF**

Press "MODE/VOLUME" to enter the on mode.

Press and hold "MODE/VOLUME" to turn off the unit in standby mode.

## **SELECTING MODES**

Press "MODE" repeatedly to switch between modes.

## **ADJUSTING VOLUME/SOUND**

Rotate "VOLUME" on the unit or press "VOL -/+ " on the remote to decrease/increase the volume.

"BASS": Rotate to increase / to decrease low frequency

"TREBLE": Rotate to increase / to decrease high frequency

## **MUTE**

Press „MUTE“ on the remote control to switch off the volume.

Press the button again or change the volume.

## **INFORMATION**

Press repeatedly "INFO" to announce the available information's MP3 and radio mode.

## **ERP power management**

If nobody presses and holds the POWER button to turn OFF the unit after stopping playing, the unit will power off automatically after around 15 minutes. Press "MODE / VOLUME" button on the unit or the button on the remote to wake the device up from standby mode.

## **FM (UKW) RADIO**

1. Select FM mode.

2. Press "SCAN" or "▶▶/◀◀" on the remote control to start FM auto-search.

It is also possible to rotate "ENTER/SCROLL/SELECT" or to use the numeric buttons to tune the desired radio station. Confirm the setting with the numeric buttons with "ENTER"

3. If you tune to a FM stereo station, the 'stereo' will show on the display. If you tune to a weaker FM station, the reception will automatically switch to mono.

You may press "ENTER" to change Stereo or Mono mode

## **DAB RADIO**

1. Select DAB mode.

2. Press "SCAN" to do a full scan of the available DAB channels.

Rotate the "ENTER/SCROLL/SELECT" knob to choose the desired DAB station.

3. If you wish to tune the DAB channels manually, press and hold "PLAY/PAUSE" for 2-3 seconds and the display will show the DAB channels from 5A. Then turn the "ENTER/SCROLL/SELECT" knob to select your desired DAB channel one by one.

## **PRESET FUNCTION IN DAB/FM MODE**

### **Preset storing**

1. In DAB/FM playing mode, choose the desired radio station. Press and hold "PROGRAM" for 2 seconds, "

Empty P1" will show on the display, rotate "ENTER/SCROLL/SELECT" to choose the desired station.

2. Press "ENTER/SCROLL/SELECT" to confirm and 'Preset 1 Stored' will show on the display.

3. Repeat the above 1 – 2 steps to program 20 desired DAB stations or 20 FM stations.

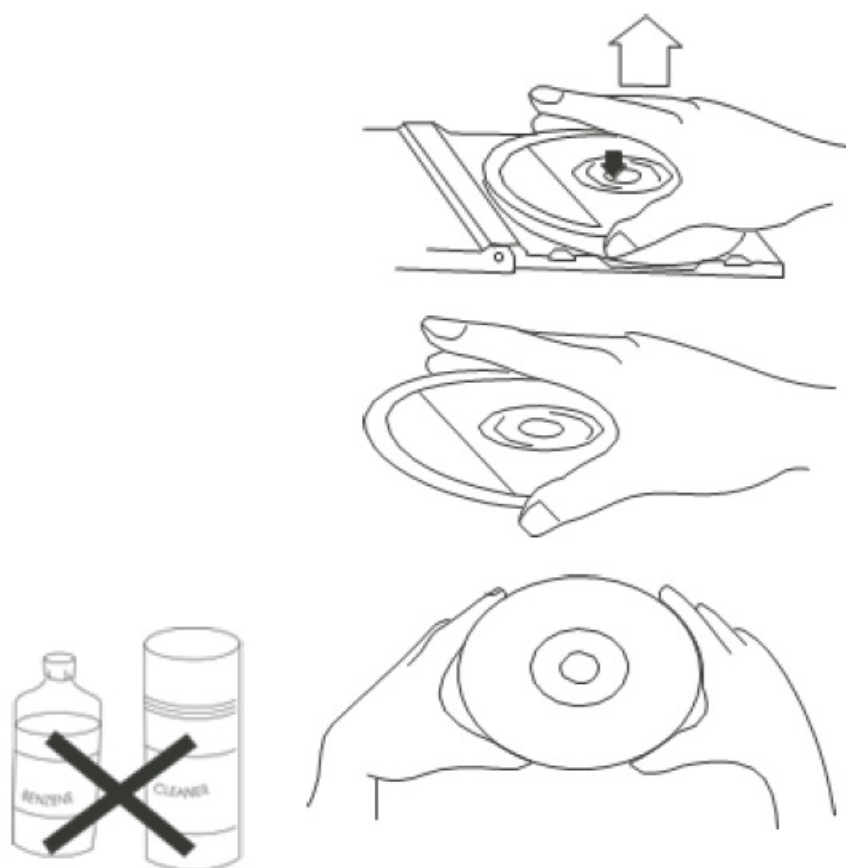
### **Preset recall**

Press "PRESET/ALBUM -/+ " to recall the preset station.

## **CD – MP3 / USB OPERATION**

### **COMPACT DISC CARE**

To remove a disc from its storage case, press down on the centre of the case and lift the disc out, holding it carefully by the edges. Fingerprints and dust should be carefully wiped off the discs recorded surface with a soft cloth. Unlike conventional records, compact discs have no grooves to collect dust and microscopic debris, so gently wiping with a soft cloth should remove most particles. Wipe in a straight line from the inside to the outside of the disc. Small dust particles and light stains will have absolutely no effect on reproduction quality.



Note: CD or USB mode have the same operating procedures.

### **Playing CD or USB**

1. Press "MODE" to enter the CD or USB mode.

2. CD: Press "▲" to open the CD door. Place a CD with the printed side facing up inside the tray, then close the CD door by pressing "▲". The first track will start playback.

USB: Insert carefully USB drive in the USB socket. The first track will start playback.

3. Press to pause the playback. The track time will start blinking. Press again to resume the playback.

4. Press ■ to stop the playback.

## TRACK SKIP AND HIGH SPEED TRACK SEARCH IN CD / USB MODE

1. During CD/USB playback, press “▶▶” or “◀◀” repeatedly will skip to higher or lower tracks. The disc will begin to play from your selected track.
2. To rapidly search forward or backward within a track and locate a specific passage of it, press and hold “▶▶” or “◀◀”. The player will search forward or backward at a high speed. Release the button when you hear your desired passage and the playback will resume normal from that point.
3. To select next folder (Album) press “PRESET/ALBUM +/-” on the remote control.

## REPEAT and RANDOM Function

1. Press “P.MODE” (PLAY-MODE), the player will repeat the current playing track; “Rep1” will show on the screen
2. Press “P.MODE” secondly, the player will repeat the tracks in the playing folder; “RepF” will show on the screen.
3. Press “P.MODE” thirdly; the player will repeat the tracks in the whole playing USB or CD; “RepA” will show on the screen.
4. Press “P. MODE” fourthly, the player will enter into the “Random” playing mode; “Rand” will show on the screen. Press “▶▶” or “◀◀” button to choose the playing tracks by random. Press “P.MODE” again to cancel the RANDOM function and the unit resume to the normal playing sequence.

NOTE: There is no folder in the disc if no MP3 is detected. During playing a CD-Disc, there has no FOLDER repeating function

## MEMORY FUNCTION IN CD/MP3 MODE

1. In CD/USB stop mode, press “PROGRAM” on the remote control to enter PROGRAM mode, ‘ “MEM” “P01 T 01” will show on the screen.
2. Press “▶▶” or “◀◀” to select your desired track and then press “PROGRAM” to confirm.
3. Repeat the step 1 and step 2 to continue to program.  
Note: You can save a total of 20 MP3 tracks or 20 CD tracks. ‘FULL’ will show on the screen once over 20 MP3 tracks or 20 CD tracks.
4. Press to play the saved tracks, press “▶▶” or “◀◀” to select a track in the sequence saved.
5. Press ■ twice to leave program mode. The entire program stored in memory is canceled.

## BLUETOOTH® FUNCTION

1. Select the Bluetooth® mode.
2. Select from your portable device (Smartphone, Tablet...) the ID Bluetooth® tagged as ‘MCD5600’, then confirm connection.
3. Now you can transfer the music to MCD5600 and all operations can only be operated from your mobile device.
4. To disconnect the Bluetooth® connection, press and hold “PLAY/PAUSE ”, or switch the unit to other mode, or switch off the Bluetooth® function of your device.

## AUX IN OPERATION

Select the PHONO/AUX mode. Insert the audio cable (not included) into the matching ‘AUX IN’ socket of the unit. Start the playback of the connected device and you can hear the sound in MCD5600.

## TURNTABLE OPERATION

### IMPOTANT

- Remove the stylus protector.
- Be sure that the tone arm is being detached from the tone arm rest before operating and re-secured again afterwards.
- Phono and Aux are sharing the same function band. Once the 3.5mm Aux-in jack is being connected, unit will switch to Aux-in function automatically. Therefore, make sure the 3.5mm Aux-in jack is not being connected if you wish to play a record.

### PLAYING RECORDS

This system includes a 3-speed, belt-drive turntable. You can play 33, 45 and 78 rpm records.

1. Select the "PHONO/AUX" mode.
2. Make sure that you have removed the stylus cover from the stylus and have released the tone arm lock that secured the tone arm to the tone arm rest.
3. Set the turntable speed selector to the appropriate speed 33 or 45 or 78 rpm. If you are playing 45 rpm 'singles', place the 45 rpm adapter on the centre spindle.
4. Place your record on the centre spindle.
5. Lift the tone arm from the rest and slowly move it to the edge of the record. The turntable starts automatically. Place the tone arm to the desired position of the record.
6. At the end of record, the platter will automatically stop rotating. Lift the tone arm from the record and return it to the rest.
7. To stop manually, lift the tone arm from the record and return it to the rest.

**Remark :** As some kind of record the auto-stop area was out of the unit setting, so it will stop before the last rack finish. In this case, select the auto-stop switch to " off " position, then it will run to the end of the record but will not stop automatically (turn off the power button or switch back the "AUTO-STOP ON/OFF" switch to " on " position to stop the platter rotate). Then put back the tone arm to the rest position.

## GENERAL OPERATION

- **STOP / EJ. (EJECT) KEY**      Press this to stop all tape deck operation.
- Press it again to open the cassette door.
- **FAST FORWARD KEY &**      Press these to start rapid tape winding – either in a forward or
- **FAST REWIND KEY**      reverse direction.
- Press the Stop / Eject/Fast Rewind keys when the cassette spools stop turning.
- **PLAY KEY**      Press this key to start playing a cassette tape.
- **PAUSE KEY**      Press this key to temporarily stop the cassette tape operation.
- Press it again to resume play.
- **RECORD KEY Deck 1 only**      Press this together with the play key to start tape recording.

## CASSETTE PLAYBACK

- Select the " TAPE " function.

- Press “STOP/EJ.” (eject) to open Deck 2.
- Insert a pre-recorded cassette tape with the exposed part of the tape facing downwards.  
Note: see section on Cassette Care below before proceeding.
- Press “PLAY” to start playback.
- Use “PAUSE” to temporarily stop playback.
- Press “STOP / EJ.” when finished. Press it again to open the cassette door.
- Remove the tape cassette.

### **“CONTINUOUS PLAY” FUNCTION FOR DOUBLE CASSETTE PLAYER**

To play cassettes in both cassette players, one after the other:

- Insert a pre-recorded music cassette in both cassette players as normal.
- Then press “PLAY” at Deck 2, which will start playing.
- Press “PAUSE” and “PLAY” together at Deck 1.
- The tape in Deck 1 will start playing automatically after the tape in Deck 2 has finished playing.

## **RECORDING TO CASSETTE**

### **RECORDING FROM CASSETTE TO CASSETTE (DECK 2 TO DECK 1)**

This unit enables you to duplicate a pre-recorded tape to another tape. This can only be performed from Deck 2 (playback) to Deck 1 (recording).

- Select “TAPE” function.
- Insert a pre-recorded cassette tape into Deck 2 and a blank cassette tape into Deck 1.
- Press “PAUSE” and then press “RECORD” and “PLAY” together at Deck 1.
- Press “PLAY” to start playback at Deck 2 and then press “PAUSE” at Deck 1 to start dubbing.
- Press “PAUSE” at Deck 1 and then “STOP” at Deck 2 when finished recording.

### **RECORDING FROM OTHER SOURCES TO CASSETTE**

- Insert a blank audio cassette tape in Deck 1.
- Select the desired source/title or station and may start playback
- Press “RECORD” & “PLAY” together to start recording.
- Press “PAUSE” and then “STOP/EJECT” key when finished recording.

**NOTE:** During recording of some FM and DAB radio stations, some interference in reception may be experienced. This is normal and not a malfunction of the system.

## **USB RECORDING**

### **CD/MP3 RECORDING**

Plug USB drive into USB socket. During the CD/MP3 playing mode, press “•REC” one time, “Checking” then “REC USB” will show on the display and press “•REC” again which will show “REC One”. Then press “•REC” to confirm to choose record the playing track.

During the CD/MP3 stop mode, press the “•REC” button one time, “REC USB” will show on the display and press “•REC” button again which show “REC All”. Then press the “•REC” button to confirm to record all tracks.

## OTHER SOURCE RECORDING

Plug USB drive into USB socket.

Select the source you want to record; may you have to prepare to pause the record source in advance

- Press “•REC” one time and the display will show “Checking” then “REC USB”.
- Press “•REC” again to confirm recording.
- Start the playback of the source you want to record
- Press “ ” to stop or resume the record function during the recording mode.

## NOTE:

- Press “INFO” button before Bluetooth/Aux/Phono/Tape recording, you can select the recording bit rate from 32 – 256 kHz. Press “▶▶” or “◀◀” button to choose the desired bit rate and press “INFO” button again to confirm.
- The bit rate of DAB/FM recording is preset at 128 kHz.
- It is not able to change the recording bit rate for CD/MP3 recording.
- The system will create a music folder name – “RIP” for CD-DA encode, “REC” for Tuner, Phono, Bluetooth, Aux, Cassette encode and “FROMCD” for CD-MP3 disc copy

## DELETE USB RECORDING

During the USB stop mode, press the “DELETE” button on the remote control one time, ‘Del- T001’ will show on the display. Press “▶▶” or “◀◀” to choose the file to delete, Press “DELETE” again and the display will show “Yes” and flashing “No”, press “p!” to choose “Yes” and press “DELETE” again to confirm.

During the USB stop mode, press and hold “DELETE” for few seconds on the remote control, ‘Del All’ will show on the display meaning to delete all files. Press “DELETE” again and the display will show “Yes” and flashing “No”, press “»” to choose “Yes” and press “DELETE” again to confirm. All files in the USB will be deleted.

## HEADPHONES OPERATION

During usual operation insert the earphone’s cable (not included) into the matching ‘PHONES’ socket of the unit. Now you can hear the sound exported to your earphones.

**Note:** Adjust the volume lever lower during the PHONES operation.

To prevent possible hearing damage, do not listen at high volume levels for long periods.

## LINE OUT

You can connect the unit to an external amplifier or record player (such as a tape recorder) via the line out jack. To do this, connect the device to a conventional RCA cable that you can get from a specialist dealer.

## FACTORY RESET

In DAB mode, press and hold “P-MODE” (Play Mode) button on the remote control for 2-3 seconds, until the display shows “Reset” “Ok” which means the factory reset is successfully.

## MANUAL TIME SETTING

1. Set the unit in Standby-Mode.
2. Press and hold “PROGRAM” on the unit, “24 HR” is flashing in the display.
3. Set the “12 HR” or “24 HR” mode by pressing the “▶▶” or “◀◀”. To confirm press “PROGRAM”, the hour begins flashing.
4. Set the hour by pressing “▶▶” or “◀◀”. To confirm press “PROGRAM”, the minutes begin flashing.
5. Set the minutes by pressing “▶▶” or “◀◀”. To confirm press “PROGRAM” button again and the time setting is

finished.

The current version of the manual can be downloaded from [www.soundmaster.de](http://www.soundmaster.de)

Technical changes and misprints reserved.

Duplication only with the permission of Woerlein GmbH

## TECHNICAL SPECIFICATIONS

Manufacturer	Wörlein GmbH, Gewerbestrasse 12, D-90556 Cadolzburg <a href="http://www.soundmaster.de">www.soundmaster.de</a> HRB-Nº 771 bei Amtsgericht Fürth/Bay.
AC adaptor – Model identifier	JF028WR-1500170VV
Power input	100 -240V ~ 50/60Hz 0,8A
Power output	15,0V / 1,7 A / 25,5 W
Average active efficiency	87,5%
Low load efficiency 10%	80,2%
No load power consumption	≤ 0.1W
Power consumption in standby	0,7 W

FM/DAB range	FM 87.5MHz – 108.0MHz DAB 174.928 – 239.200 MHz
Bluetooth® – Version	Version 5.0 E.I.R.P < 10 dBm
Audio power output	2 x 5 W RMS

## HERSTELLER / IMPORTEUR

Hereby, Wörlein GmbH declares that this device is in compliance with the essential requirements and other relevant provisions of Directive 2014/53/EU.

A copy of the declaration of conformity can be obtained from the above address.

Tel: +49 9103 71 67 0

Fax: +49 9103 71 67 12

E-Mail: [info@soundmaster.de](mailto:info@soundmaster.de)

Internet: [www.soundmaster.de](http://www.soundmaster.de)

## Documents / Resources



## [soundmaster MCD5600 Stereo System with Turntable DAB plus Double Cassette CD Player \[pdf\] User Manual](#)

21655, MCD5600 Stereo System with Turntable DAB plus Double Cassette CD Player, MCD5600, Stereo System with Turntable DAB plus Double Cassette CD Player, System with Turntable DAB plus Double Cassette CD Player, Turntable DAB plus Double Cassette CD Player, DAB plus Double Cassette CD Player, Double Cassette CD Player, Cassette CD Player, CD Player, Player

## References

- [User Manual](#)

### [Manuals+ Privacy Policy](#)

This website is an independent publication and is neither affiliated with nor endorsed by any of the trademark owners. The "Bluetooth®" word mark and logos are registered trademarks owned by Bluetooth SIG, Inc. The "Wi-Fi®" word mark and logos are registered trademarks owned by the Wi-Fi Alliance. Any use of these marks on this website does not imply any affiliation with or endorsement.