



soundcore T0361 Frames Charging Case Instruction Manual

[Home](#) » [Soundcore](#) » soundcore T0361 Frames Charging Case Instruction Manual 

**soundcore T0361 Frames Charging
Case Instruction Manual**

soundcore



Charging Case
for Soundcore Frames

Quick Start Guide

For FAQs and more information, please visit :

soundcore.com/support



Model: T0361 - 51002003274 - V1



@SoundcoreAudio



@soundcoreaudio

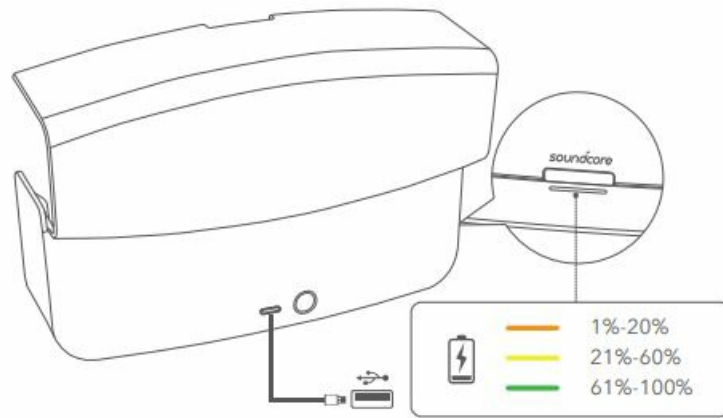


@soundcoreaudio

Contents

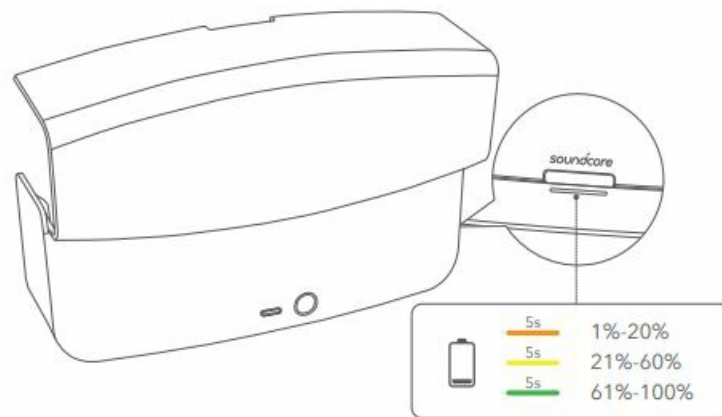
- 1 CHARGING THE CASE
- 2 CHECKING BATTERY LEVEL
- 3 CHARGING YOUR SOUNDCORE FRAMES
- 4 RESET YOUR SOUNDCORE FRAMES
- 5 MANUAL PAIRING
- 6 Documents / Resources
 - 6.1 References

CHARGING THE CASE



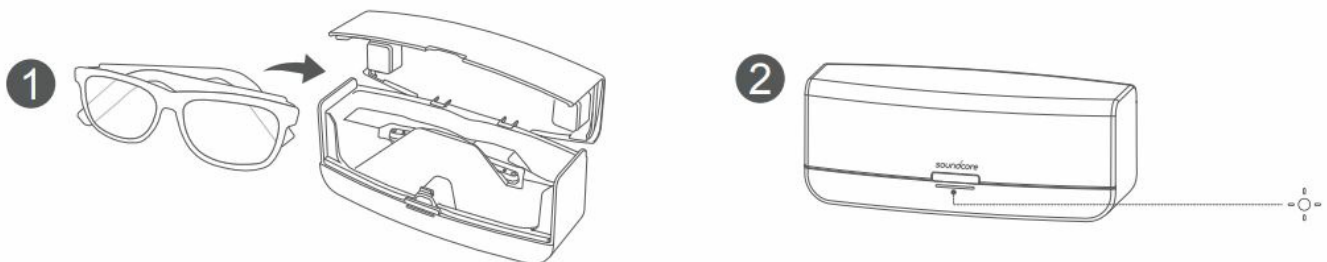
Use the included USB-C cable to charge your charging case.
During charging, the LED indicators light up from left to right repeatedly.

CHECKING BATTERY LEVEL



To check the battery level of the charging case, press the button on the back or lift the cover.

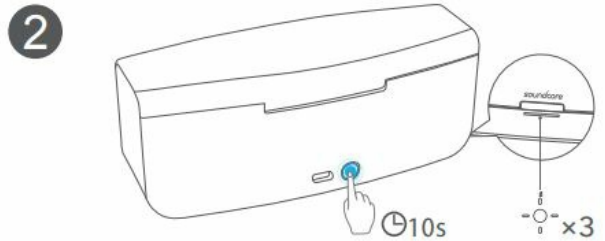
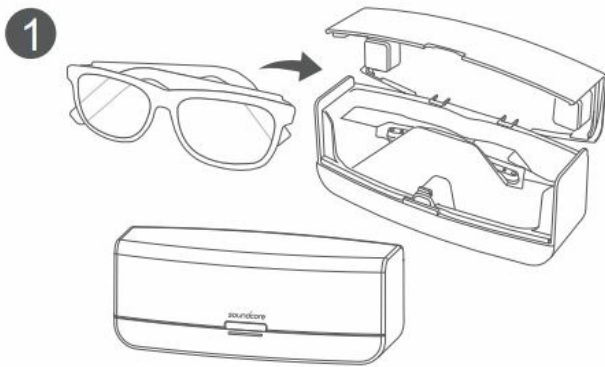
CHARGING YOUR SOUNDCORE FRAMES



Place your Soundcore Frames in the charging case and close it. If all LED indicators light up white, it means your Soundcore Frames are being charged.

- If only one side of the LED indicators lights up, it means only the audio temple on that side is being charged.

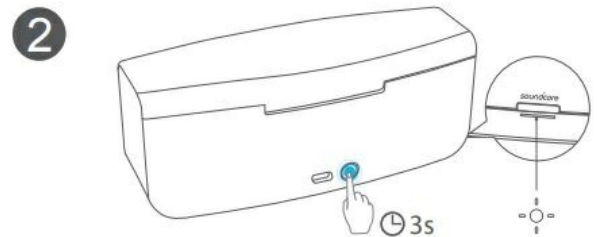
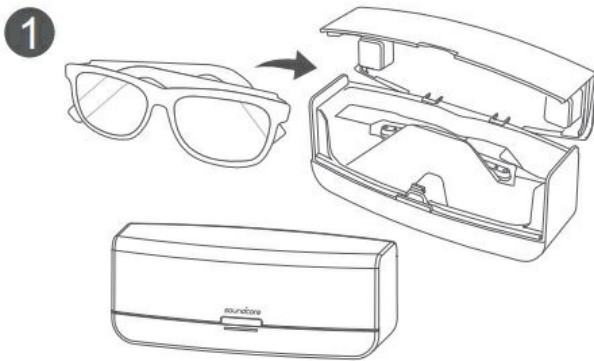
RESET YOUR SOUNDCORE FRAMES



Leave your Soundcore Frames in the charging case and close it. Press and hold the button on the back for 10 seconds until the LED indicators light up white from left to right 3 times. After a successful reset, Soundcore Frames will automatically enter Bluetooth pairing mode.

- During the reset, do not lift the cover or take Soundcore Frames out.

MANUAL PAIRING



Leave your Soundcore Frames in the charging case and close it. Press and hold the button on the back for 3 seconds until the LED indicators breathe white continuously. This signifies Soundcore Frames has successfully re-entered Bluetooth pairing mode.

- When Soundcore Frames is successfully paired, it will stop charging.
- The Bluetooth connection will not be disconnected until you remove and then return Soundcore Frames to the case.
- If Bluetooth pairing fails after 2 minutes, Soundcore Frames will switch to charging mode and LED indicators will turn off.


Customer Service
18-month limited warranty
Lifetime technical support

Our warranty is additional to the legal rights consumers have buying this product.

service@soundcore.com
support.mea@soundcore.com (For Middle East and Africa Only)
support@anker.com
 +1 (800) 988 7973 (US) Mon-Fri 6:15AM – 5:00PM (PT)

Anker Innovations Limited
Room 1318-19, Hollywood Plaza, 610 Nathan Road, Mongkok, Kowloon, Hong Kong
ANKER TECHNOLOGY (UK) LTD
Suite B, Fairgate House, 205 Kings Road, Tyseley, Birmingham, B11 2AA,
United Kingdom
Anker Innovations Deutschland GmbH
Georg-Muche-Strasse 3, 80807 Munich, Germany

Documents / Resources

	soundcore T0361 Frames Charging Case [pdf] Instruction Manual T0361 Frames Charging Case, T0361, Frames Charging Case, Charging Case
---	---

References

- [🔊 Soundcore EN](#)
- [User Manual](#)

[Manuals+](#), [Privacy Policy](#)

This website is an independent publication and is neither affiliated with nor endorsed by any of the trademark owners. The "Bluetooth®" word mark and logos are registered trademarks owned by Bluetooth SIG, Inc. The "Wi-Fi®" word mark and logos are registered trademarks owned by the Wi-Fi Alliance. Any use of these marks on this website does not imply any affiliation with or endorsement.