



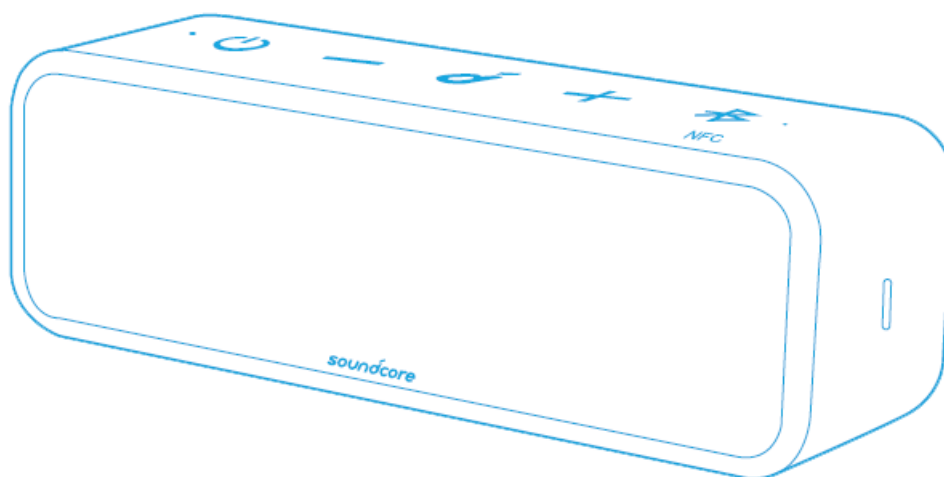
SoundCore Select 2 Portable Speaker A3125 User Manual

[Home](#) » [Soundcore](#) » SoundCore Select 2 Portable Speaker A3125 User Manual 

Contents

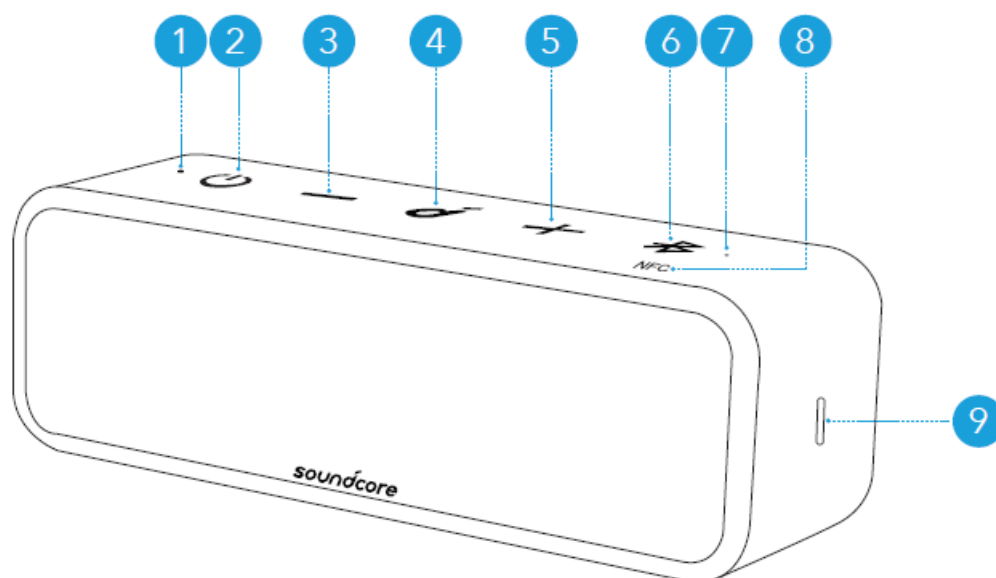
- [1 SoundCore Select 2 Portable Speaker A3125](#)
- [2 At a Glance](#)
- [3 Charging](#)
- [4 Powering On/Off](#)
- [5 Using your Soundcore Select 2](#)
 - [5.1 Bluetooth Mode](#)
 - [5.2 NFC Mode](#)
 - [5.3 PartyCast Mode](#)
- [6 Button Controls](#)
- [7 Soundcore App](#)
- [8 Specifications](#)
- [9 DOWNLAOD](#)
- [10 Related Posts](#)

SoundCore Select 2 Portable Speaker A3125



USER MANUAL

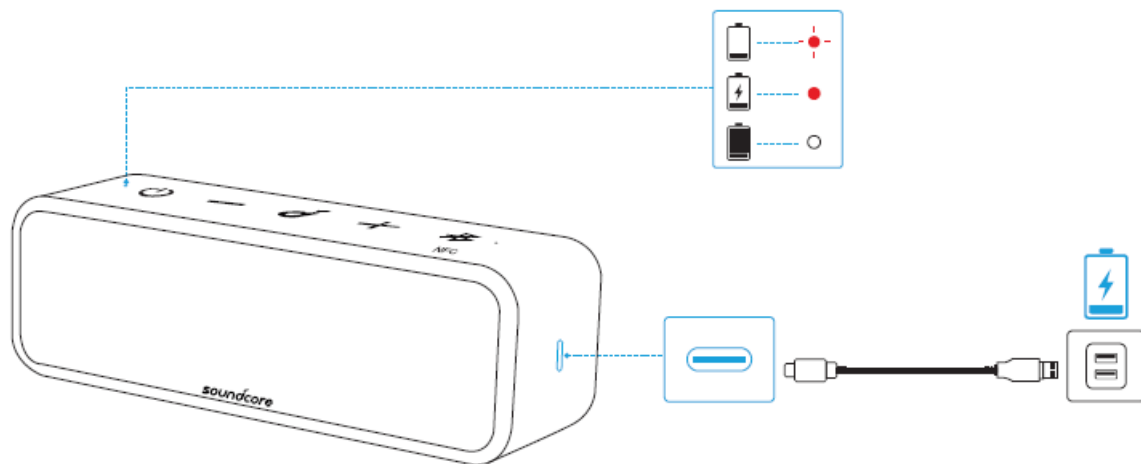
At a Glance



1. Power LED
2. Power button
3. Volume down button
4. Multi-function button
5. Volume up button
6. Bluetooth/PartyCast button
7. Bluetooth LED
8. NFC tag
9. USB-C charging port

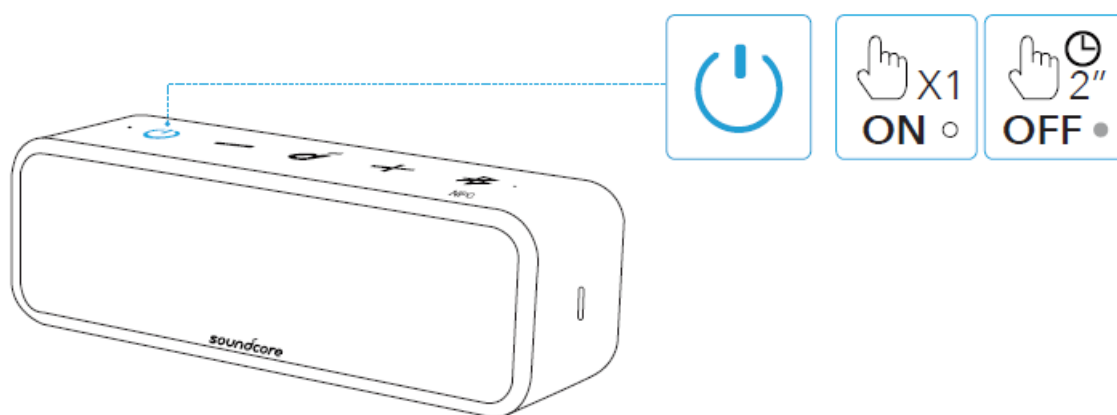
Charging

- Use the provided USB-C cable to prevent any damage.
- Fully charge this speaker before the first use to prolong the lifespan of the built-in battery.
- Disconnect this speaker from the charger when fully charged. Do not charge for extended periods.



	Flashing red	Low battery
	Steady red	Being charged
	Steady white	Fully charged

Powering On/Off



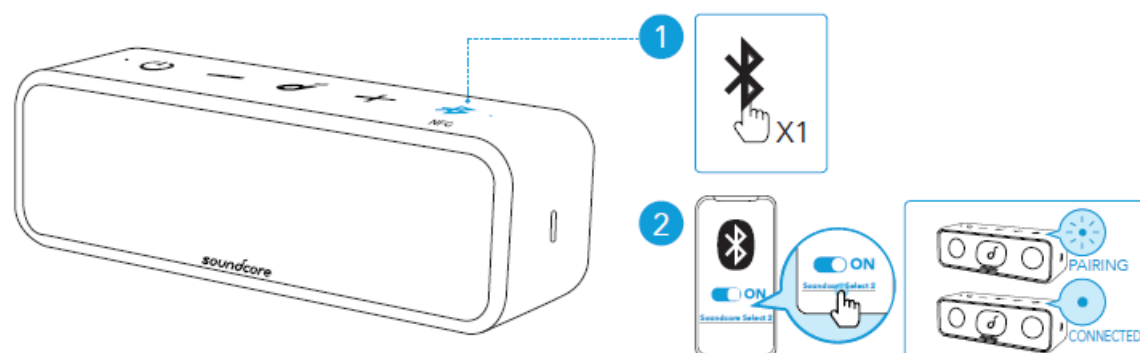
Power on		Press
Power off		Press and hold for 2 seconds

Note: This speaker will power off automatically 30 minutes after no audio input or button inactivity.

Using your Soundcore Select 2

Bluetooth Mode

With this speaker, you can enjoy music through your Bluetooth-enabled devices.



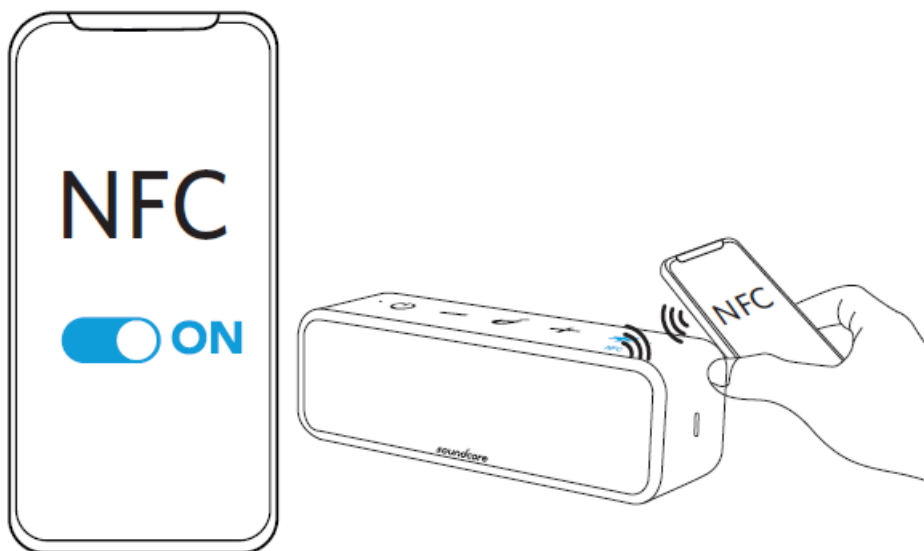
	Press	Enter Bluetooth pairing mode
	Flashing blue	Bluetooth pairing
	Steady blue	Bluetooth connected

- Dual Bluetooth Connection: This speaker can pair up to 2 mobile devices via Bluetooth. To pair with another device, press the Bluetooth button to re-enter Bluetooth pairing mode.
- This speaker can only play music on one mobile device at a time. To play from another connected device, pause the currently active device first.
- Each time you power on your Soundcore speaker, it will automatically connect to your last connected device if available within the Bluetooth range. If not, press the Bluetooth button to enter Bluetooth pairing mode.

NFC Mode

If your Bluetooth device supports NFC, you can connect it with this speaker easily.

1. Enable the NFC feature on your Bluetooth device.
2. Touch the NFC tag on the speaker with the back of your Bluetooth device.
3. On your Bluetooth device, accept the pairing request with "Soundcore Select 2".

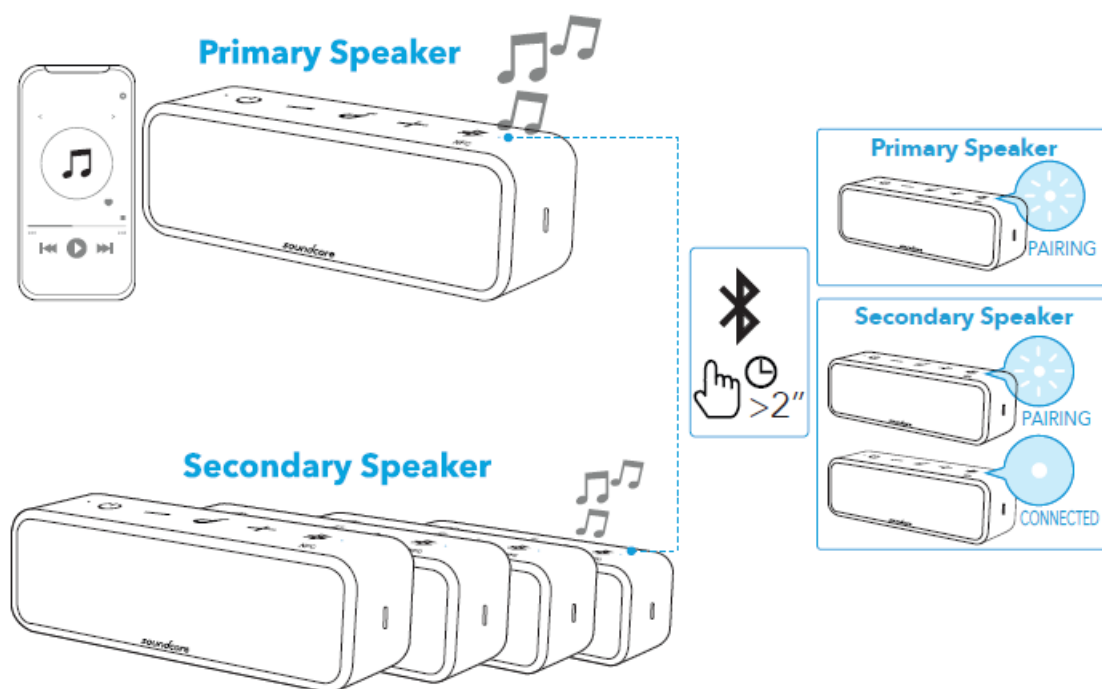


PartyCast Mode

You can wirelessly connect up to 100 identical Soundcore Select 2 speakers together.

1. Connect one Soundcore Select 2 speaker with your smartphone or tablet as the primary speaker.
2. Press and hold the Bluetooth button on the primary speaker and all desired speakers to enter pairing mode.

>>> When successfully connected, the Bluetooth LED on the primary speaker will continue flashing white, while on the secondary speakers will turn white.



When PartyCast mode is successfully entered:

- Any secondary speaker can be switched to become the primary speaker by pressing the Bluetooth button twice and connecting to your smartphone. Any primary speaker can be switched to become the secondary speaker

by pressing the Bluetooth button twice and searching for an available primary speaker.

- To exit the PartyCast mode, press and hold the Bluetooth button on any speaker for 2 seconds.

Button Controls



Press

Play/Pause



Press twice

Next track



Press thrice

Previous track



Press or press and hold

Adjust volume



Press

Answer/End a call



Press

Answer a second incoming call and put the current call on hold



Press and hold for 2 seconds

Reject an incoming call



Press and hold for 2 seconds

Switch between a call on hold and an active call



Press and hold for 2 seconds

Activate Siri or other voice assistant software

Soundcore App

Download the Soundcore App for enhanced product experience.

- Update firmware
- Indicate battery status
- Remotely control the volume and play/pause
- Customize EO settings
- Set Auto-power off time



Google Play and the Google Play logo are trademarks of Google Inc.



Apple and the Apple logo are trademarks of Apple Inc.

Specifications

Specifications are subject to change without notice

DC power input	5 V 2 A
Battery capacity	5200 mAh
Audio output power	8 W x 2
Charging time Appr.	4 hours
Playtime (varies by volume level and music content)	Up to 20 hours
Waterproof level	IPX7
Bluetooth version	5
Bluetooth range	20 m / 66 ft

DOWNLAOD

SoundCore Select 2 Portable Speaker A3125 User Manual – [[Download PDF](#)]

SoundCore Select 2 Portable Speaker A3125 QSG – [[Download PDF](#)]

A3125 Soundcore Select 2 Declaration of Conformity – [[Download PDF](#)]
