



# SoundCore Motion Q Portable Speaker A3108 User Manual

[Home](#) » [Soundcore](#) » SoundCore Motion Q Portable Speaker A3108 User Manual 

## Contents

- [1 SoundCore Motion Q Portable Speaker A3108](#)
- [2 Safety Instructions](#)
- [3 What's Includes](#)
- [4 At a Glance](#)
- [5 Using Your Soundcore Motion Q](#)
  - [5.1 1. Turn on/ off](#)
  - [5.2 2. Pair](#)
- [6 Charge your Soundcore Motion Q](#)
- [7 Specifications](#)
- [8 DOWNLOAD](#)
- [9 Related Posts](#)

**SoundCore Motion Q Portable Speaker A3108**



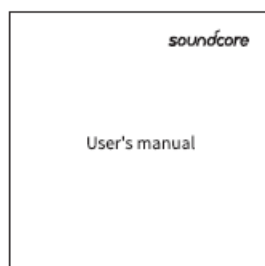
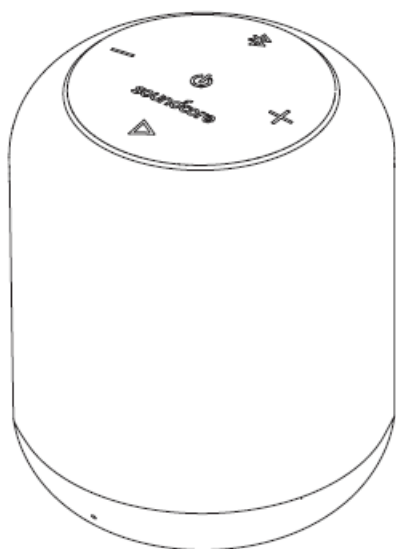
## **USER MANUAL**

Model No.: A3108  
51005001240 VO!

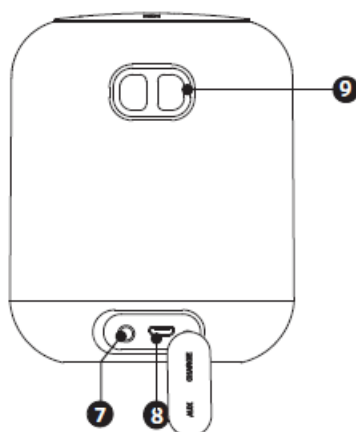
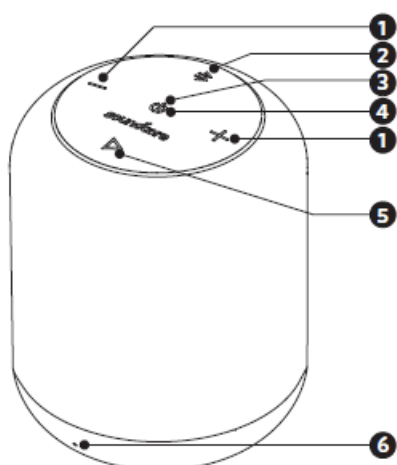
### **Safety Instructions**

- Avoid dropping.
- Do not disassemble.
- Soundcore Motion Q can be immersed in water up to 1m for up to 30 minutes.
- Avoid extreme temperatures.
- Do not use the device outdoors during thunderstorms. Use original or certified cables
- Do not use any corrosive cleaner/oil to clean.

### **What's Includes**



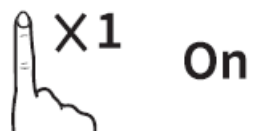
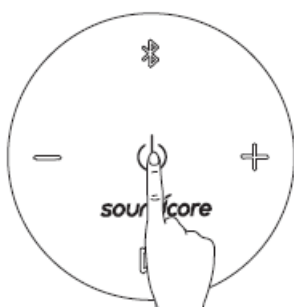
## At a Glance



1. Volume-/+
2. Bluetooth pairing button
3. Battery indicator /Status indicator
4. Power switch
5. Multi-function button
6. Microphone
7. 3.5mm Aux input
8. Micro USB charging port
9. Hand strap hole

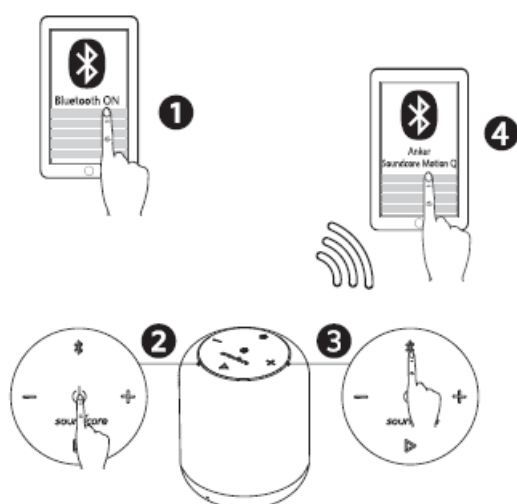
## Using Your Soundcore Motion Q

### 1. Turn on/ off



## 2. Pair

### a. Bluetooth mode



Flashing blue

Bluetooth Pairing mode



Steady blue

Connected to a device



Enter True Wireless Stereo pairing mode /  
Disconnect True Wireless Stereo



Flashing white

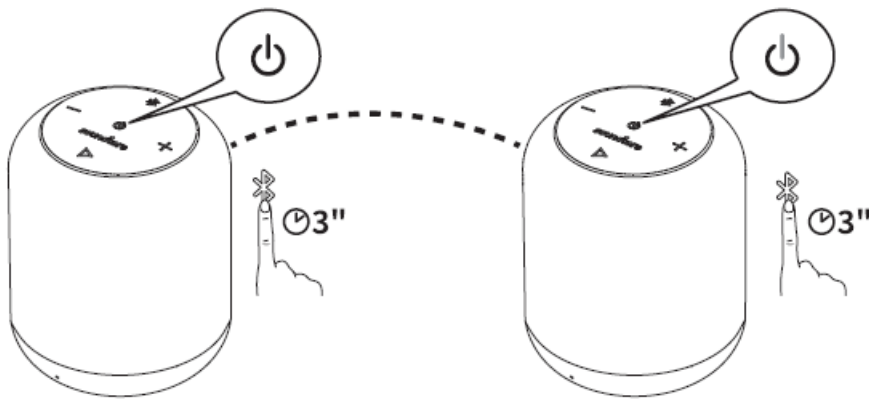
True Wireless Stereo pairing mode



Steady white

Connected to True Wireless Stereo

Enter True Wireless Stereo pairing mode/ Disconnect True Wireless Stereo



**NOTE:** With True Wireless Stereo technology, you can connect your Soundcore Motion Q to another Soundcore Motion Q and explore the be sound effects with left and right sound channels separated on different Bluetooth speaker,



Play / pause



Volume up / down



Next track



Previous track



Answer / End call / Put current call on hold and answer incoming call / Transfer a call between speaker and mobile phone



Reject call / Switch between held call and active call



Activate Siri / other voice control software



Steady blue

On a call



Flashing blue

Incoming call

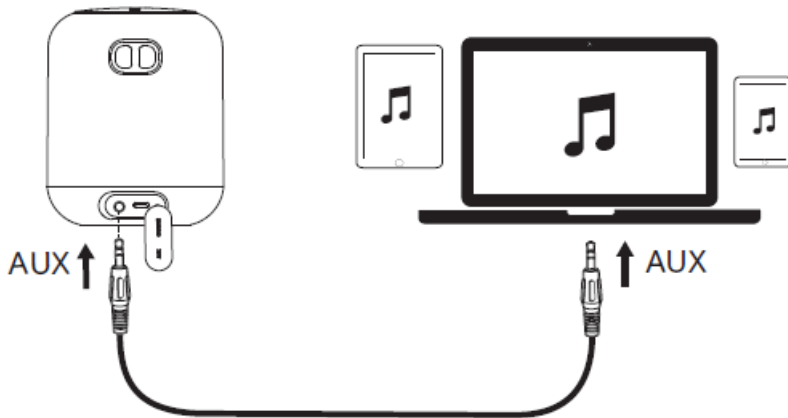
#### NOTE:

- When turned on, Soundcore Motion Q will automatically connect to the last connected device if available, If not, press Bluetooth button to activate the pairing mode.
- To pair a different device, first disable Bluetooth on the connected device or press the Bluetooth pairing button to re-enter pairing mode.
- Then repeat the pairing steps. Having connection problems?
- Remove Soundcore Motion Q from your device's Bluetooth history, ensure it's less than 3 feet away then try

pairing again.

- To get the best sound quality, make sure there is a clear line of sight between the connected device and your speaker,

#### b. AUX-In Mode:

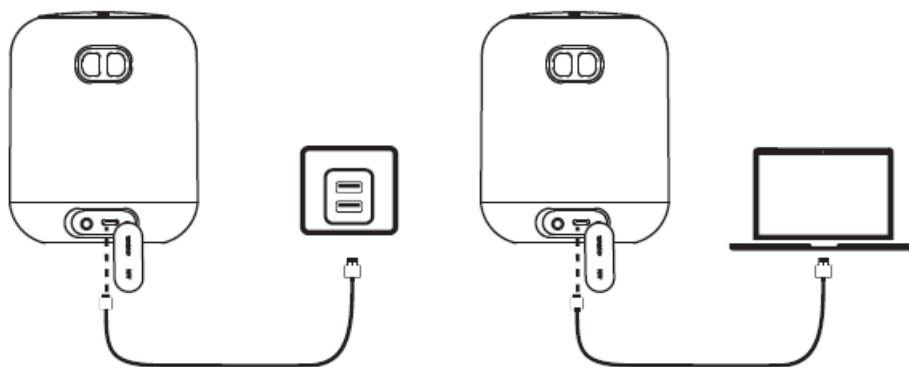


\* SoundLine AUX Cable Sold Separately

#### NOTE:

- Plugging in an audio cable will automatically switch to Aux mode.
- When using AUX mode, control audio playback via the connected device.

#### Charge your Soundcore Motion Q



Slow flashing red

Low power



Steady red

Charging

Off

Fully charged

#### NOTE:

- Use the included USB cable to charge your Soundcore Motion Q
- Y and make sure it is fully charged before first use.
- Disconnect your speaker from charger when fully charged.
- Donot charge your speaker for extended periods.
- When not in use, store your speaker in a cool place.

## Specifications

- Input:SV=IA
  - Audio output: 8 W x 2
  - Battery capacity: 2600 mAh
  - Charging time: 3.5 hours
  - Playtime (varies by volume level and content): 10 hours
  - Size:88x88x108mm/3.5x3.5 x4.3in
  - Weight (without packaging): 416g/ 14.7 oz
  - Bluetooth version: V4.2 + EDR
  - Range: 20 m / 66 ft
- 

## DOWNLOAD

SoundCore Motion Q Portable Speaker A3108 User Manual – [[Download PDF](#)]

A3108 Soundcore Motion Q Declaration of Conformity – [[Download PDF](#)]

---