



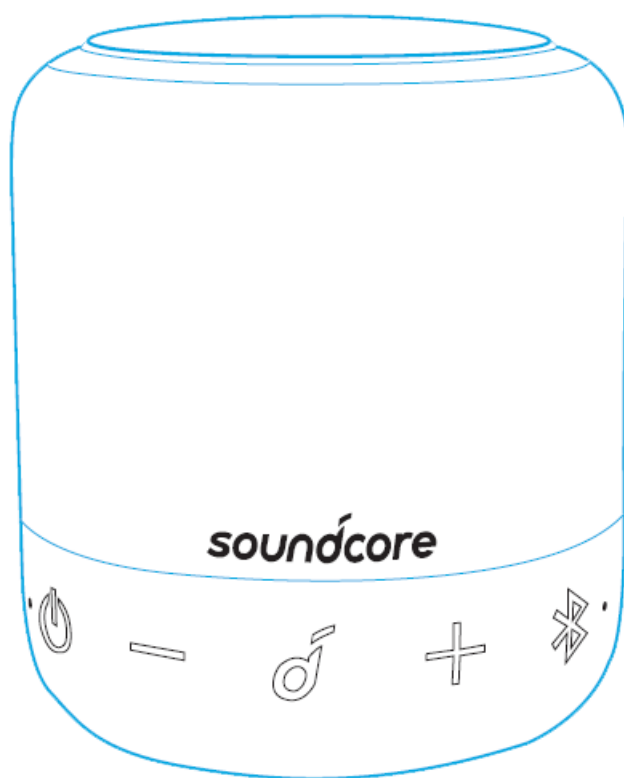
## SoundCore Mini 3 Pro Portable Speaker A3127 User Manual

[Home](#) » [Support](#) » SoundCore Mini 3 Pro Portable Speaker A3127 User Manual 

### Contents

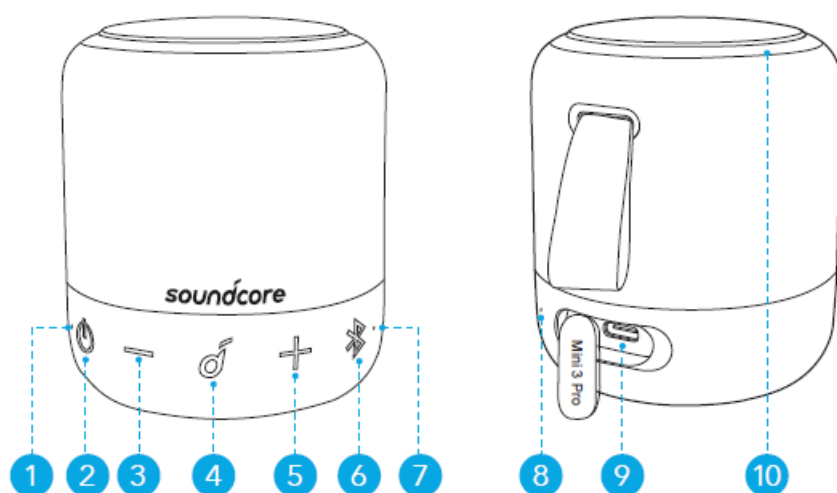
- [1 SoundCore Mini 3 Pro Portable Speaker A3127](#)
- [2 At a Glance](#)
- [3 Charging](#)
- [4 Powering On/Off & Light Effects](#)
- [5 Using your Speaker](#)
  - [5.1 Bluetooth Mode](#)
- [6 PartyCast Mode](#)
- [7 Button Controls](#)
- [8 Soundcore App](#)
- [9 Specifications](#)
- [10 DOWNLOAD](#)
- [11 Related Posts](#)

**SoundCore Mini 3 Pro Portable Speaker A3127**



## USER MANUAL

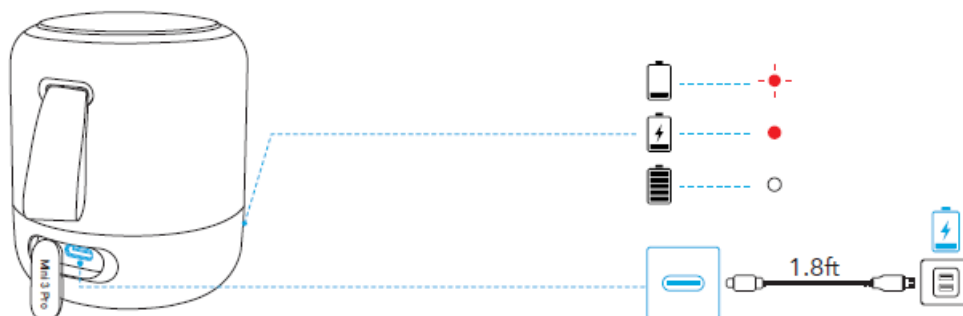
### At a Glance



- ① Power LED
- ② Power button
- ③ Volume down button
- ④ Multi-function button
- ⑤ Volume up button
- ⑥ Bluetooth button
- ⑦ Bluetooth/PartyCast LED
- ⑧ Microphone
- ⑨ USB-C charging port

## Charging

- Use a certified USB-C cable and charger to prevent any damage.
- Fully dry off the USB port before charging.
- Fully charge this speaker before the first use to prolong the lifespan of the built-in battery.
- Disconnect this speaker from the charger when fully charged. Do not charge for extended periods.

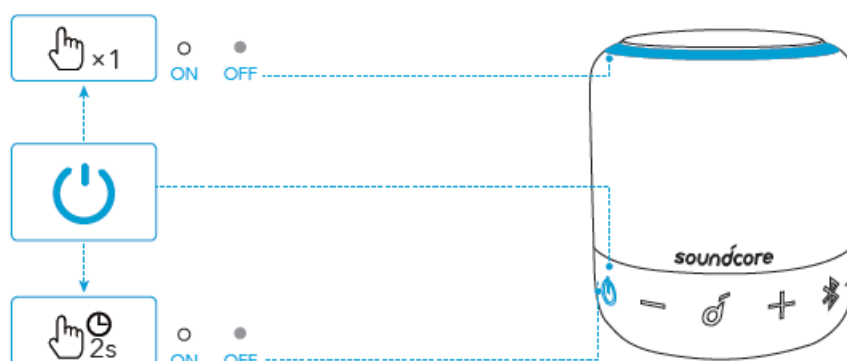


	Flashing red	Low battery
	Steady red	Being charged
	Steady white	Fully charged

## Powering On/Off & Light Effects

Press and hold the power button for 2 seconds to power on or off.

When powered on, press the power button repeatedly to turn the light effect on or off.



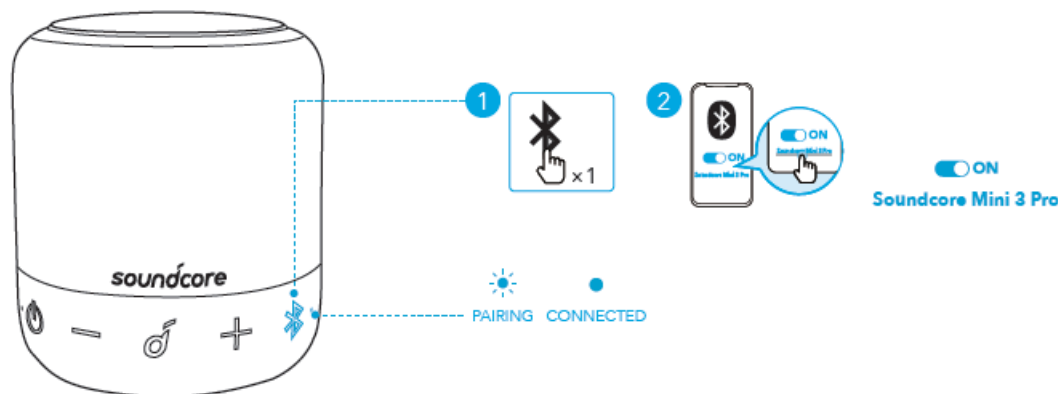
	Press and hold for 2 seconds	Power on
	Steady white	
	Press and hold for 2 seconds	Power off
	Light off	

- This speaker will power off automatically after 30 minutes if no device is connected.

## Using your Speaker

### Bluetooth Mode

With this speaker, you can enjoy music through your Bluetooth-enabled devices.



	Press	Enter Bluetooth pairing mode
	Flashing blue	Bluetooth pairing
	Steady blue	Bluetooth connected

- This speaker can pair with 2 mobile devices via Bluetooth at the same time. To pair with another Bluetooth device, press the Bluetooth button to re-enter Bluetooth pairing mode.
- This speaker can only play music on one mobile device at a time. To play from another connected device, pause the device that's currently active first.
- Each time you power on your Soundcore speaker, it will automatically connect to your last connected device if available within the Bluetooth range. If not, press the Bluetooth button to enter Bluetooth pairing mode.

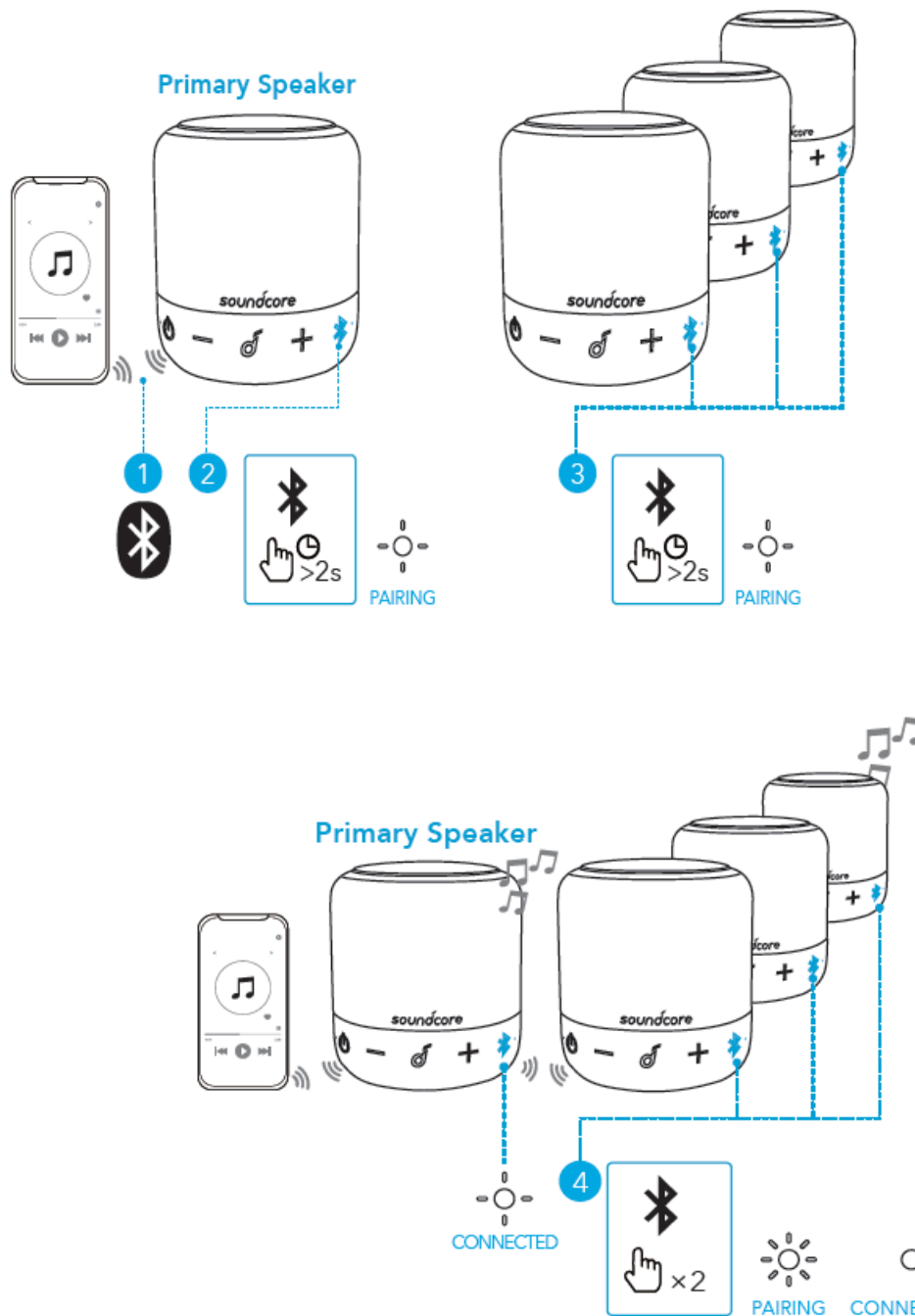
### PartyCast Mode

You can wirelessly connect up to 100 identical Soundcore Mini 3 Pro speakers together. In PartyCast mode, connect one of the speakers with your mobile device so that all connected speakers play the same audio.

- Soundcore speakers with PartyCast function can also be connected with this speaker.

1. Press and hold the Bluetooth button for 2 seconds on the Soundcore Mini 3 Pro that's currently connected to your device as the primary speaker.
2. Repeat Step 1 on the other Soundcore Mini 3 Pro you want to connect and then press the Bluetooth button twice to make them secondary speakers in PartyCast pairing.

- The secondary speakers will automatically connect with the primary speaker.














	Press and hold for 2 seconds	Enter PartyCast pairing mode
	Slowly flashing white (Primary speaker)	PartyCast pairing
	Rapidly flashing white (Secondary speaker)	
	Slowly flashing white (Primary speaker)	PartyCast connected
	Steady white (Secondary speakers)	

#### When PartyCast mode is successfully entered:

- Any secondary speaker can be switched to become the primary speaker by pressing the Bluetooth button twice and connecting to your smartphone. Any primary speaker can be switched to become the secondary speaker by pressing the Bluetooth button twice and searching for an available primary speaker.
- To exit the PartyCast mode, press and hold the Bluetooth button on any speaker for 2 seconds.

## Button Controls

		
	Press	Play/Pause
	Press twice	Next track
	Press three times	Previous track
—/+	Press or press and hold	Adjust volume

		
	Press	Answer/End a call
	Press	Answer a second incoming call and put the current call on hold
	Press and hold for 2 seconds	Reject an incoming call
	Press and hold for 2 seconds	Switch between a call on hold and an active call
		
	Press and hold for 2 seconds	Activate Siri or other voice assistant software

## Soundcore App

Download the Soundcore app to enhance your experience.

**Product information:** Check the product name and software version, or read the user manual.

**Firmware update:** You will be informed once a new version of firmware is detected when you connect the speaker with the app.

**Battery status:** Indicates the remaining battery level of your speaker.

**Volume control:** Adjust the volume level via the app without pressing the buttons on the speaker.

**EQ settings:** There are 4 EQ settings you can choose from in the app to optimize your experience while enjoying different music genres.

**Soundcore Signature:** Normal EQ mode with well-balanced sound.

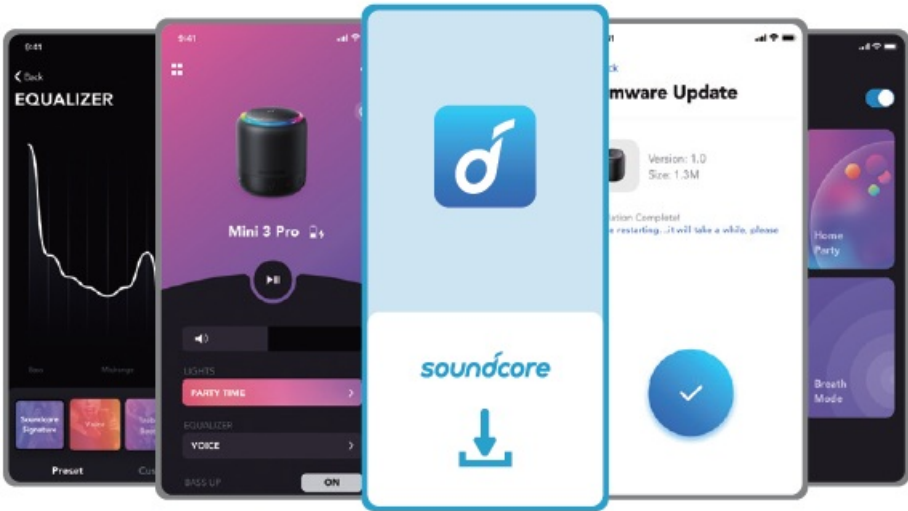
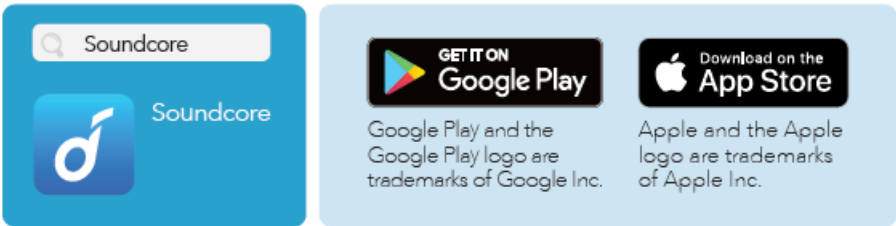
- **Voice:** Voices stand out more clearly from other ambient sounds.
- **Treble Boost:** High frequencies are enhanced.
- **Balance:** No enhancement for high-frequency and low-frequency sounds.

**Set Auto-power off time:** Set an auto-power off time (5/10/30/60 minutes, 30 minutes by default), the speaker

will automatically power off when time is up.

**Light effects:** Besides the music-sync light effects, you can also choose your favorite light effects (Beach Party, Camping Trip, Evening Breeze, Midnight Groove) from in the app.

**Voice prompt:** Mute or restore the voice prompt while powering on/off.



Specifications

Specifications are subject to change without notice.

DC power input	5 V 1 A
Battery capacity	1800 mAh / 3.7 V
Audio output power	6 W
Charging time	2-3 hours
Playtime (varies by volume level and music content)	Up to 15 hours
Waterproof level	IPX7
Bluetooth version	5
Bluetooth range	20 m / 66 ft

DOWNLOAD

SoundCore Mini 3 Pro Portable Speaker A3127 User Manual – [[Download PDF](#)]

SoundCore Mini 3 Pro Portable Speaker A3127 QSG – [[Download PDF](#)]

A3127 Soundcore Mini 3 Pro Declaration of Conformity – [[Download PDF](#)]

---

Manuals+