



# Soundcore Sleep A10 Noise Blocking Sleep Earbuds User Guide

[Home](#) » [Soundcore](#) » Soundcore Sleep A10 Noise Blocking Sleep Earbuds User Guide 

## Contents

- [1 Soundcore Sleep A10 Noise Blocking Sleep Earbuds](#)
- [2 SUPPORT](#)
- [3 CHARGING](#)
- [4 SELECTING LISTENING MODE](#)
- [5 CONTROLS](#)
- [6 POWERING OFF](#)
- [7 Documents / Resources](#)
  - [7.1 References](#)
- [8 Related Posts](#)

**soundcore**

**Soundcore Sleep A10 Noise Blocking Sleep Earbuds**

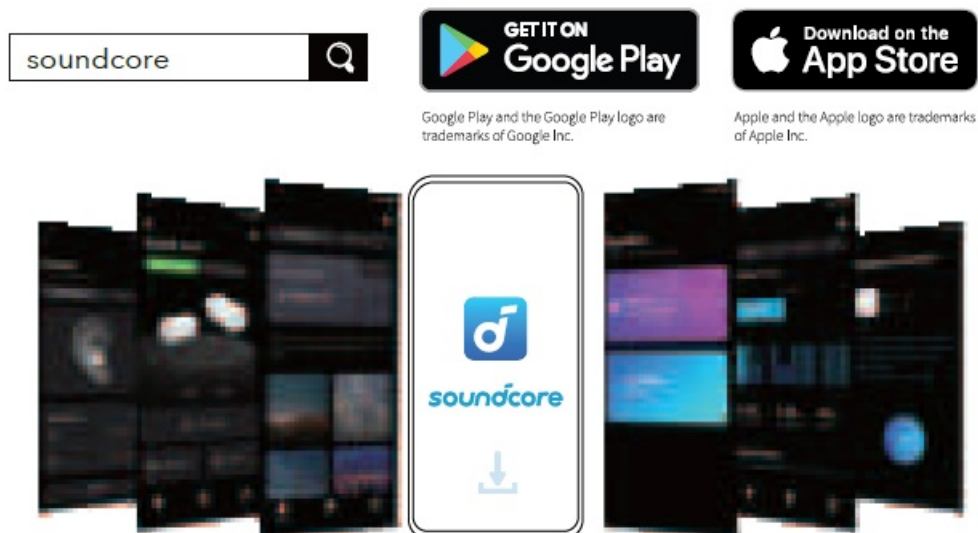


## SUPPORT



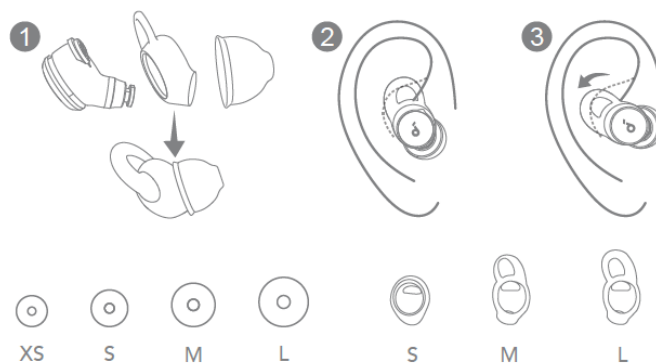
Please visit [www.soundcore.com/support](https://www.soundcore.com/support) for more information.

## APP

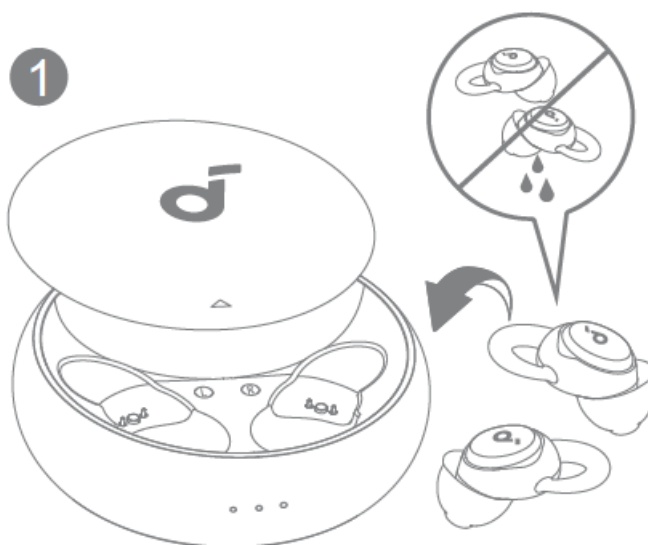


Download the sound core app to customize controls, listen to soothing sounds, manage your sleep, update firmware, and explore more.

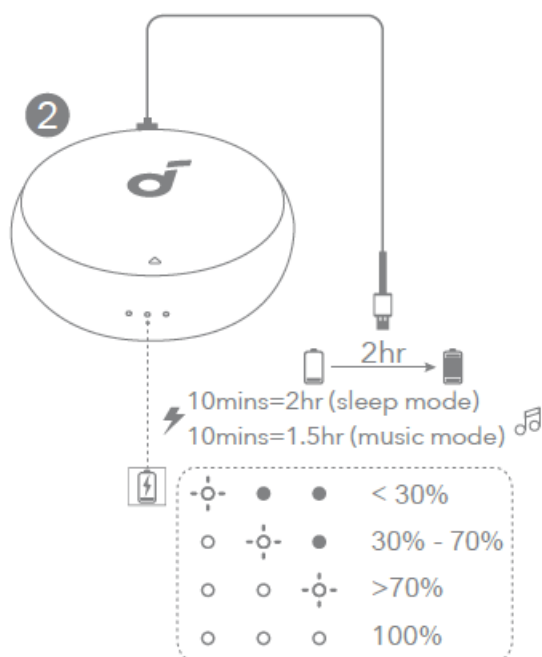
## CHARGING



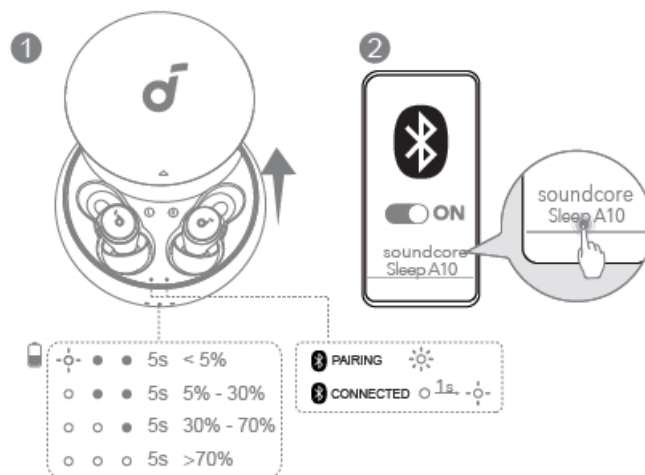
1. Fully dry off the earbuds and the USB charging port before charging.



2. Use an original or
3. certified USB-C charging cable to prevent any damage. It is recommended to charge the earbuds with a 5V charger (not included).

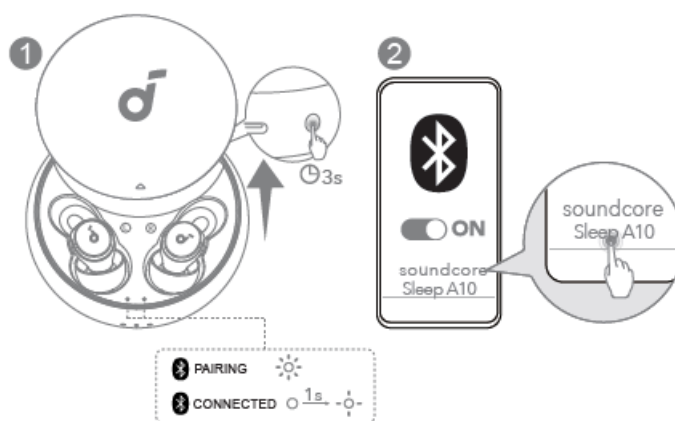


## POWERING ON & PAIRING



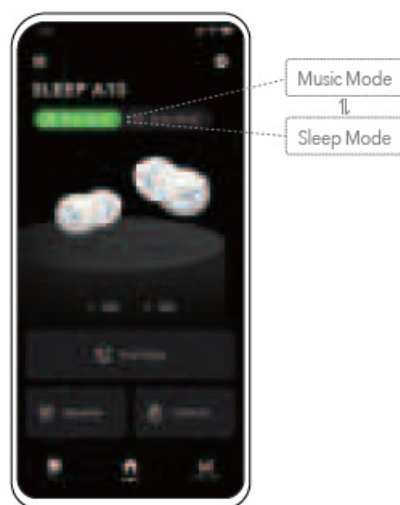
Open the charging case, the earbuds will automatically power on and enter pairing mode. Select “soundcore Sleep A10” on your device’s Bluetooth list to connect.

## RE-PAIRING



Pairing with another device: Place the earbuds in the charging case and leave the case open. Press and hold the button on the case for 3 seconds to enter pairing mode.

## SELECTING LISTENING MODE



You can switch between Music Mode and Sleep Mode via the sound core app or by tapping the left earbud twice.

- Music Mode: Play soothing sounds from the sound core app, or connect to your favorite apps for more audio

content.



- Sleep Mode: Listen to the soothing sound downloaded onto your earbuds without having to interact with apps.

**ADAPTIVE NOISE MASKING**



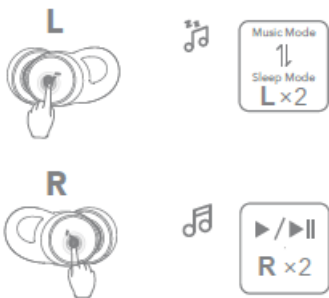
Enable Adaptive Noise Masking\* to adjust volume automatically depending on the noise levels. Only available in Sleep Mode.

**SLEEP DETECTION**



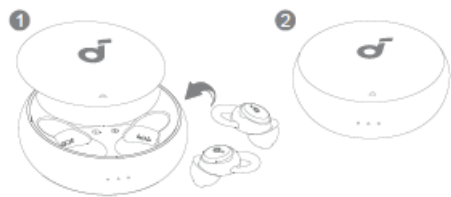
Sleep Monitoring: The earbuds can monitor your sleep and provide a sleep quality report. Smart Switch: Enable this feature to automatically switch to Sleep Mode when you fall asleep.

**CONTROLS**



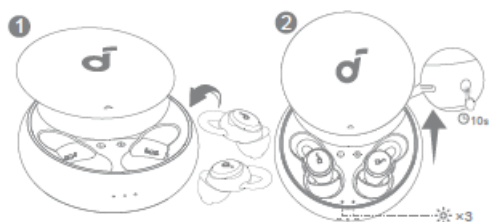
x2: Tap twice firmly  
Customize more controls in the sound core app.

POWERING OFF



To power off, place the earbuds in the charging case and close it.

RESET



Place the earbuds in the charging case and leave the case open. Press and hold the button on the charging case for 10 seconds until the LED indicators rapidly flash white 3 times.

- Customer Service
- 18-month limited warranty
- Lifetime technical support
- Our warranty is additional to the legal rights consumers have buying this product
- The phone call function is not supported on sound core Sleep A10. Please use your mobile phone to answer a call.
- sound core Sleep A10 adopts noise masking instead of noise canceling. Noise masking covers up noise with selected sounds, while noise-canceling offsets noise using sound waves.

Documents / Resources

	<a href="#">soundcore Sleep A10 Noise Blocking Sleep Earbuds</a> [pdf] User Guide Sleep A10, Noise Blocking Sleep Earbuds, Sleep A10 Noise Blocking Sleep Earbuds, Sleep Earbuds, Earbuds
	<a href="#">soundcore Sleep A10 Noise Blocking Sleep Earbuds</a> [pdf] User Guide Sleep A10 Noise Blocking Sleep Earbuds, Sleep A10, Noise Blocking Sleep Earbuds, Blocking Sleep Earbuds, Sleep Earbuds, Earbuds

References

- [soundcore Headphones & Speakers - Hear it, Feel it - soundcore US](#)
- [Soundcore EN](#)
- [Soundcore EN](#)

- [!\[\]\(fd4127b9e2af37bd6ea0fa06afa8e6d8\_img.jpg\) Anker \( \) Japan – Anker Japan](#)

Manuals+.