


**soundcore**  
**Select 3 Portable**  
**Speaker**



# soundcore Select 3 Portable Speaker Instruction Manual

[Home](#) » [Soundcore](#) » soundcore Select 3 Portable Speaker Instruction Manual 

## Contents

- 1 [soundcore Select 3 Portable Speaker](#)
- 2 [Product Information](#)
- 3 [Product Usage Instructions](#)
- 4 [At a Glance](#)
- 5 [Charging Your Speaker](#)
- 6 [Powering On/Off](#)
- 7 [Using Your Speaker](#)
- 8 [Button Controls](#)
- 9 [soundcore App](#)
- 10 [Specifications](#)
- 11 [Documents / Resources](#)
  - 11.1 [References](#)
- 12 [Related Posts](#)

**soundcore**

**soundcore Select 3 Portable Speaker**



## Product Information

### Specifications:

- **DC Power Input:** 5V 2A
- **Battery Capacity:** 2400mAh/7.3V
- **Audio Output Power:** 16W
- **Speaker Driver:** 1.5" Full Range x2
- **Charging Time:** 5 Hours
- **Play Time:** Up to 20 Hours (varies by volume level and music content)
- **Waterproof Level:** IPX7
- **Bluetooth Version:** 5.0
- **Bluetooth Range:** 100m/328ft

## Product Usage Instructions

### Charging Your Speaker:

- **Flashing Red:** Low Battery
- **Steady Red:** Being Charged
- **Steady White:** Fully Charged

### Powering On/Off:

- **Power On:** Press the Power Button or Press and Hold for 2 Seconds (Steady White indicates Power On)
- **Power Off:** Press and Hold for 2 Seconds (Light Off indicates Power Off)

### Note:

The speaker will power off automatically after 20 minutes if no device is connected.

### Using Your Speaker:

### Bluetooth Mode:

1. Press the Bluetooth Button to enter Bluetooth pairing mode.
2. Select “soundcore Select 3” from the Bluetooth list to connect.

### **PartyCast Mode:**

1. Wirelessly connect up to 100 soundcore speakers with PartyCast function for synchronized audio and light.
2. To enter PartyCast pairing mode, connect a soundcore speaker to your phone via Bluetooth, then press and hold the Bluetooth button on the speaker for 2 seconds.
3. Secondary speakers can be added by pressing and holding the Bluetooth button on each speaker for 2 seconds.

### **Button Controls:**

- Power On: Press or Press and Hold for 2 Seconds
- Power Off: Press and Hold for 2 Seconds
- Play / Pause: Press
- Next Track: Press Twice
- Previous Track: Press Three Times
- Answer / End a Call: Press
- Reject a Call: Press and Hold for 2 Seconds
- Enter Bluetooth Pairing Mode: Press and Hold for 2 Seconds
- Enter / Exit PartyCast Pairing Mode: Press and Hold for 2 Seconds
- Volume Up / Down: Press
- Bass On/Off: Press

### **soundcore App:**

Download the soundcore app to enhance your experience.

### **Reset:**

To reset the speaker, press and hold the Bluetooth button and volume up button simultaneously for at least 4 seconds.

### **Frequently Asked Questions (FAQ):**

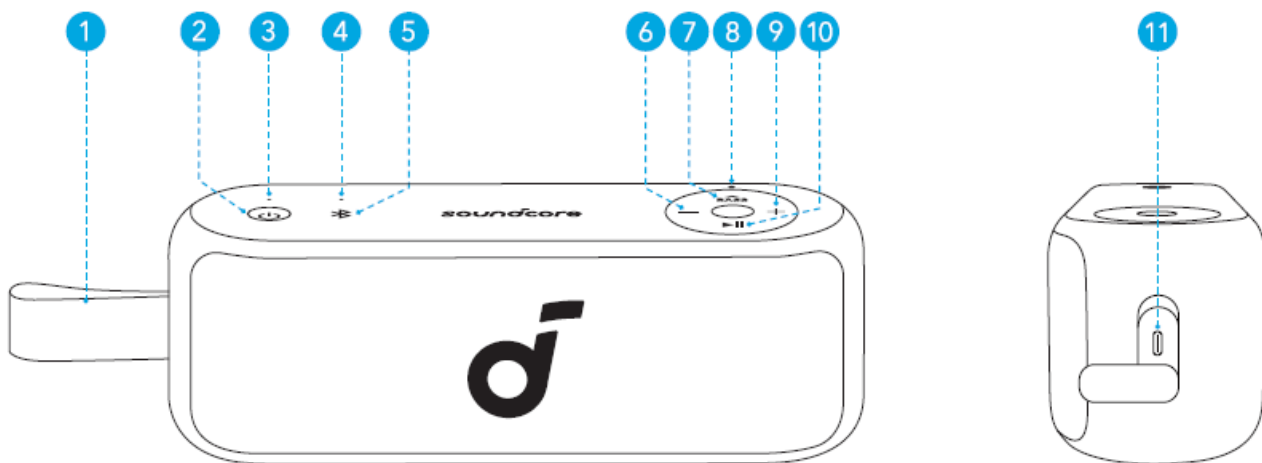
- **Q: How do I know when the speaker is fully charged?**

A: When the Power LED shows a steady white light, it indicates that the speaker is fully charged.

- **Q: How can I reset the speaker if needed?**

A: To reset the speaker, press and hold the Bluetooth button and volume up button simultaneously for at least 4 seconds.

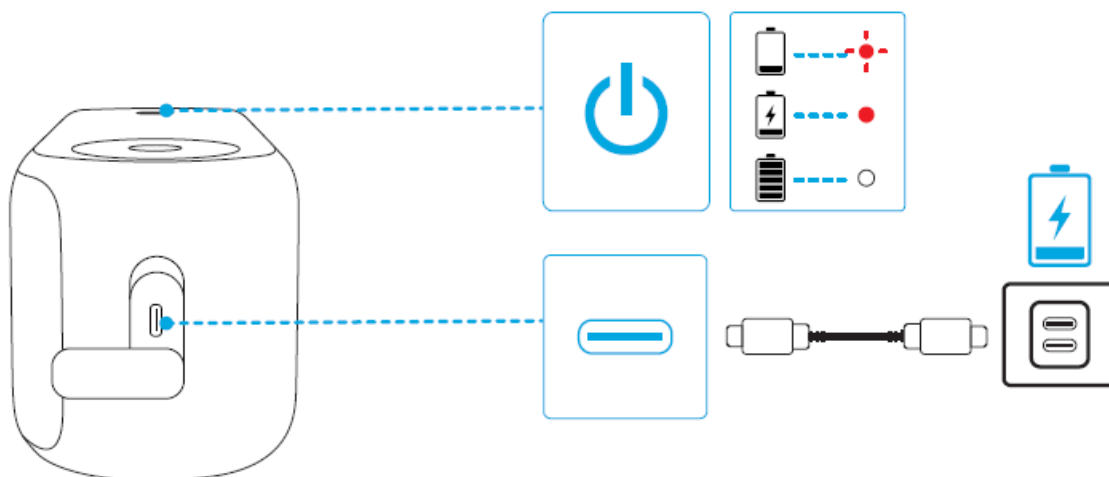
### **At a Glance**



1	Strap	7	BassUP Button
2	Power Button	8	BassUP LED
3	Power LED	9	Volume Up Button
4	Bluetooth LED	10	Play/Pause Button
5	Bluetooth Button	11	USB-C Charging Port
6	Volume Down Button		

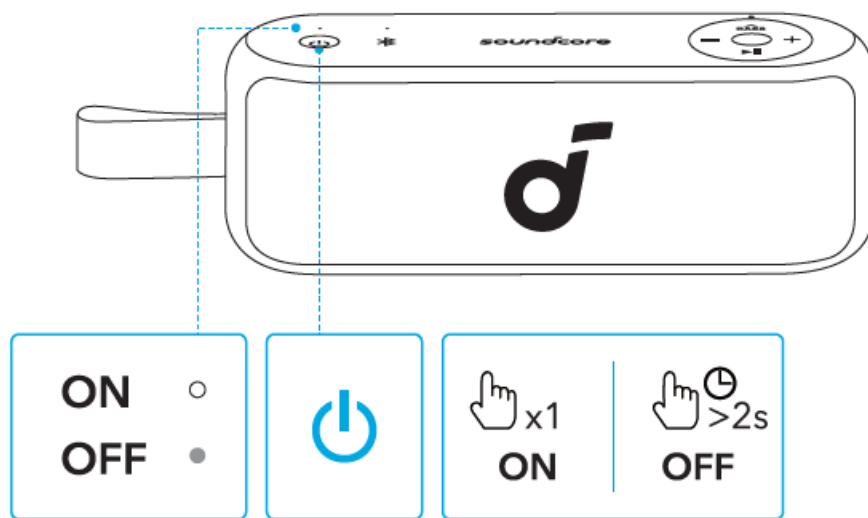
## Charging Your Speaker

Use a certified USB-C cable and charger to prevent any damage.



	Flashing Red	Low Battery
	Steady Red	Being Charged
	Steady White	Fully Charged

## Powering On/Off



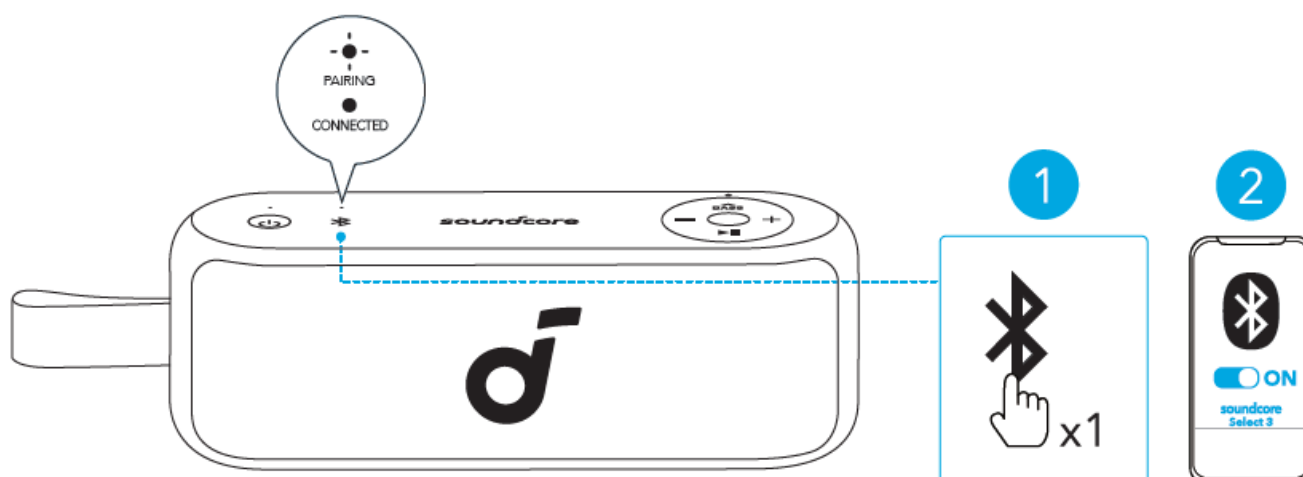
	Press or Press and Hold for 2 Seconds	Power On
	Steady White	
	Press and Hold for 2 Seconds	Power Off
	Light Off	

This speaker will power off automatically after 20 minutes if no device is connected.

## Using Your Speaker

### Bluetooth Mode

Press the Bluetooth button to enter Bluetooth pairing mode, then select “soundcore Select 3” from the Bluetooth list to connect.



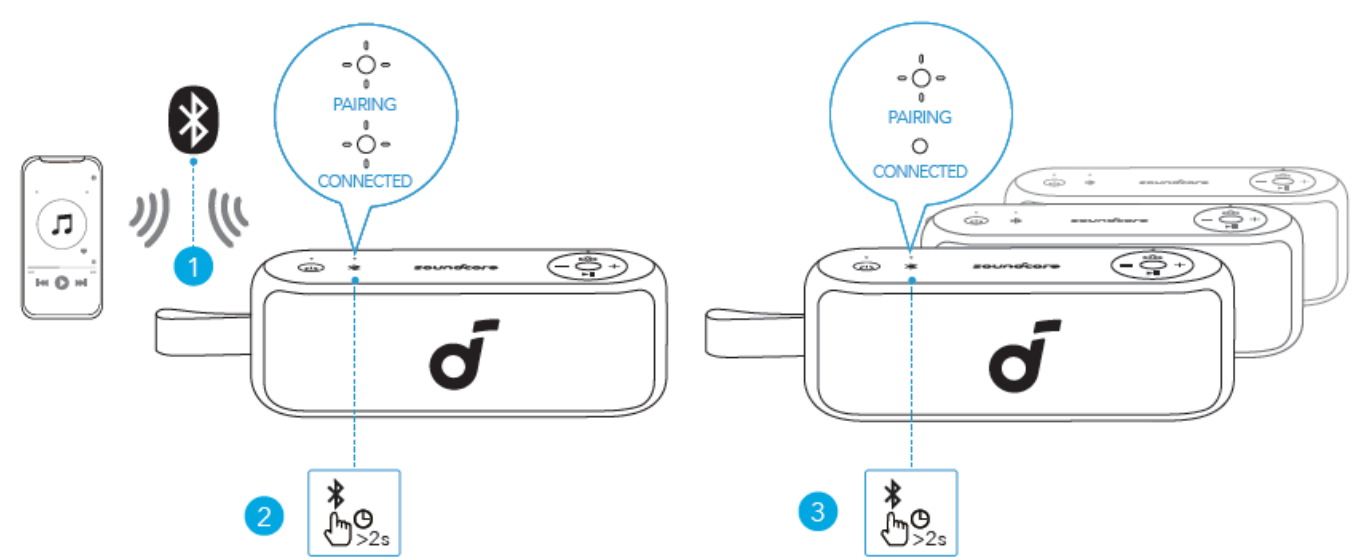
	Press	Enter / Exit Bluetooth Pairing Mode
	Flashing Blue	Bluetooth Pairing
	Steady Blue	Bluetooth Connected

- To re-enter Bluetooth pairing mode, press the Bluetooth button once.
- This speaker can only play music on one mobile device at a time. To play from another connected device, pause the device that's currently active first.
- Each time you power on your speaker, it will automatically connect to your last connected device if available within the Bluetooth range. If not, press the Bluetooth button to enter Bluetooth pairing mode.

### PartyCast Mode

You can wirelessly connect up to 100 soundcore speakers equipped with the PartyCast function to synchronize audio and light.



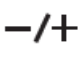

1. Connect a soundcore speaker to your phone via Bluetooth.
2. Press and hold the Bluetooth button on the speaker for 2 seconds to enter PartyCast pairing mode. The speaker that's currently connected to your phone becomes the primary speaker.
3. Press and hold the Bluetooth button on each soundcore speaker for 2 seconds to enter PartyCast pairing mode. They will become secondary speakers.



	Press and Hold for 2 Seconds	Enter / Exit PartyCast Pairing Mode
	Flashing White	PartyCast Pairing
	Flashing White (Primary Speaker)	PartyCast Connected
	Steady White (Secondary Speaker)	

Double-press the Bluetooth button on a secondary speaker to make it the primary speaker.

### Button Controls

	Press or Press and Hold for 2 Seconds	Power On
	Press and Hold for 2 Seconds	Power Off
	Press	Play / Pause
	Press Twice	Next Track
	Press Three Times	Previous Track
	Press	Answer / End a Call
	Press and Hold for 2 Seconds	Reject a Call
	Press	Enter Bluetooth Pairing Mode
	Press and Hold for 2 Seconds	Enter / Exit PartyCast Pairing Mode
	Press	Volume Up / Down
	Press	Bass On/Off

## soundcore App

Download the soundcore app to enhance your experience.



Google Play and the Google Play logo are trademarks of Google Inc.



Apple and the Apple logo are trademarks of Apple Inc.



- **Product information:** Check the product name and software version, or read the user manual.
- **Firmware update:** You will be informed once a new version of firmware is detected when you connect the speaker to the app.
- **Battery status:** Indicates the remaining battery level of your speaker.
- **Volume control:** Adjust the volume level via the app without pressing the buttons on the speaker.

- **EQ settings:** There are various preset EQ settings you can choose from in the app to optimize your experience while enjoying different music genres.
  - **soundcore Signature:** Standard EQ mode optimized for well-balanced sound.
  - **Voice:** Voices stand out more clearly from other ambient sounds.
  - **Balance:** No enhancement for high-frequency and low-frequency sounds.
  - **Xtra Bass:** Enhance the low-frequency sound.
- **Set Auto-power-off time:** The speaker will automatically power off when time is up.
- **Voice prompt:** Mute or restore the voice prompt while powering on/off.

**Reset**

Press and hold the Bluetooth button and volume up button simultaneously for at least 4 seconds to reset the speaker.

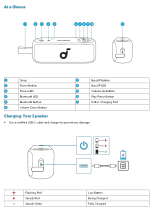
**Specifications**

Specifications are subject to change without notice.

DC Power Input	5V _ 2A
Battery Capacity	2400mAh/7.3V
Audio Output Power	16W
Speaker Driver	1.5" Full Range x2
Charging Time	5 Hours
Play Time (varies by volume level and music content)	Up to 20 Hours
Waterproof Level	IPX7
Bluetooth Version	5.0
Bluetooth Range	100m/328ft

Hereby, Anker Innovations Limited declares that this device complies with The Product Security and Telecommunications Infrastructure (Security Requirements for Relevant Connectable Products) Regulations 2023. For the Statement of Compliance, visit the website: <https://uk.soundcore.com/pages/psti-related>.

**Documents / Resources**

	<a href="#">soundcore Select 3 Portable Speaker</a> [pdf] Instruction Manual Select 3, Select 3 Portable Speaker, Select 3, Portable Speaker, Speaker
---	--

**References**

- [PSTI Related - soundcore UK](#)



- [User Manual](#)

[Manuals+](#), [Privacy Policy](#)

This website is an independent publication and is neither affiliated with nor endorsed by any of the trademark owners. The "Bluetooth®" word mark and logos are registered trademarks owned by Bluetooth SIG, Inc. The "Wi-Fi®" word mark and logos are registered trademarks owned by the Wi-Fi Alliance. Any use of these marks on this website does not imply any affiliation with or endorsement.