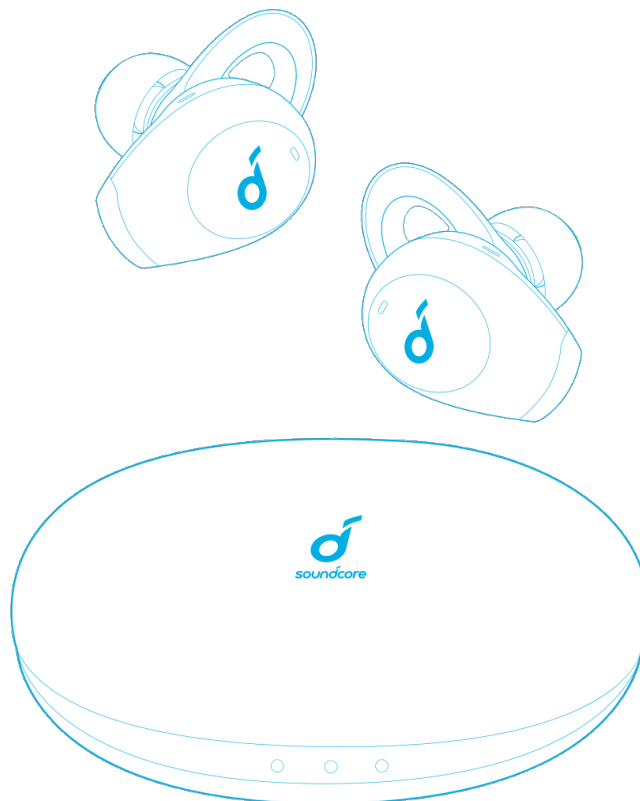




Soundcore Life A2 NC Wireless Multi Mode Noise Canceling Earbuds User Manual

[Home](#) » [Soundcore](#) » Soundcore Life A2 NC Wireless Multi Mode Noise Canceling Earbuds User Manual 

soundcore



Contents

- 1 Soundcore Life A2 NC
- 2 USER MANUAL
- 3 Charging
- 4 Soundcore App
- 5 Wearing
- 6 Powering On/Off
- 7 Bluetooth Pairing
- 8 Pairing with another device
- 9 Controls
- 10 Reset
- 11 Specifications
- 12 Documents / Resources
- 13 Related Posts

Soundcore Life A2 NC

USER MANUAL

Charging



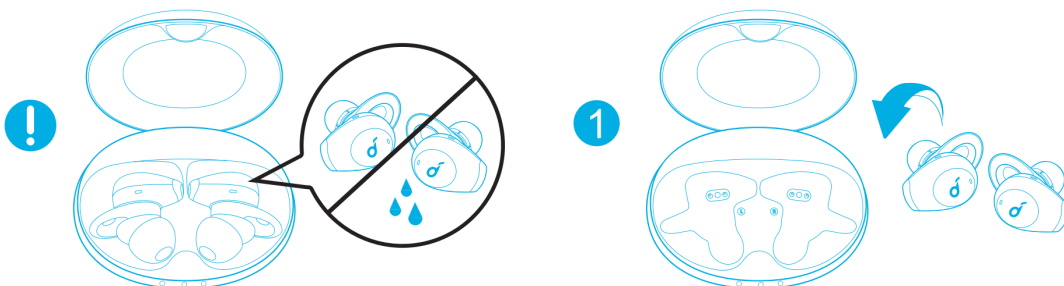
- Remove the protective film from the earbuds before the first use.
- Fully dry off the earbuds and the USB port before charging.
- Use a certified USB-C charging cable and charger to prevent any damage.
- Fully charge both the earbuds and the charging case before the first use.

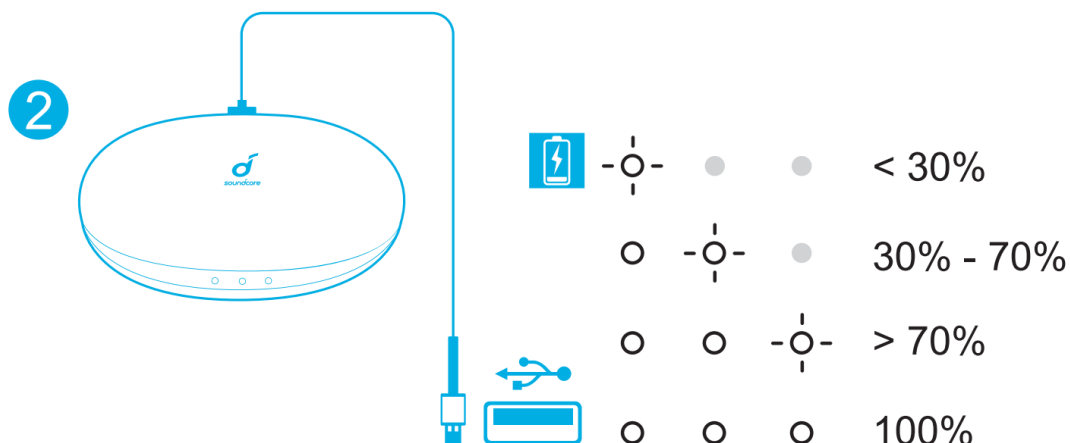
1. Place the earbuds in the charging case and close it.

→ The first and the third LED indicators on the charging case will flash twice. This confirms that the earbuds are being charged.

2. Connect the charging case to the power supply by using a USB-C charging cable.

→ The LED indicators on the charging case indicate the charging status.





3. To check the battery level of the charging case, open it to activate the LED indicator.

Soundcore App

Download the Soundcore app to enhance your experience.

User interface customization: In stereo mode, all of the controls (e.g. adjust volume, control playback, activate Siri) can be customized in the app.

EQ settings: There are more than 20 EQ settings you can choose from in the app to optimize your experience while enjoying different music genres.

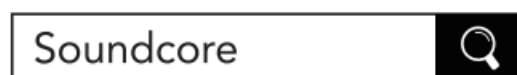
Noise cancellation: Choose an active noise cancellation mode to reduce ambient noise according to your surroundings.

- **Transport:** Targets low-end frequencies like engine and road noise for peaceful journeys and commutes.
- **Outdoor:** Reduces ambient sounds in cities for less distractions
- **Indoor:** Reduces voices and mid-frequency noise from coffee shops and other inside spaces.

Transparency mode: Stay aware of your surroundings by allowing ambient sounds in.

- **Fully Transparent:** Hear all ambient sounds.
- **Vocal Mode:** Voices stand out more clearly from other ambient sounds.

Earbuds firmware update: You will be informed once the new version of firmware is detected when you connect the earbuds with the app. Ensure the earbuds are placed in the charging case and the case remains open until the firmware upgrade is completed. During the upgrade, ensure the earbuds are being charged and avoid any operation.



Google Play and the Google Play logo are trademarks of Google Inc.

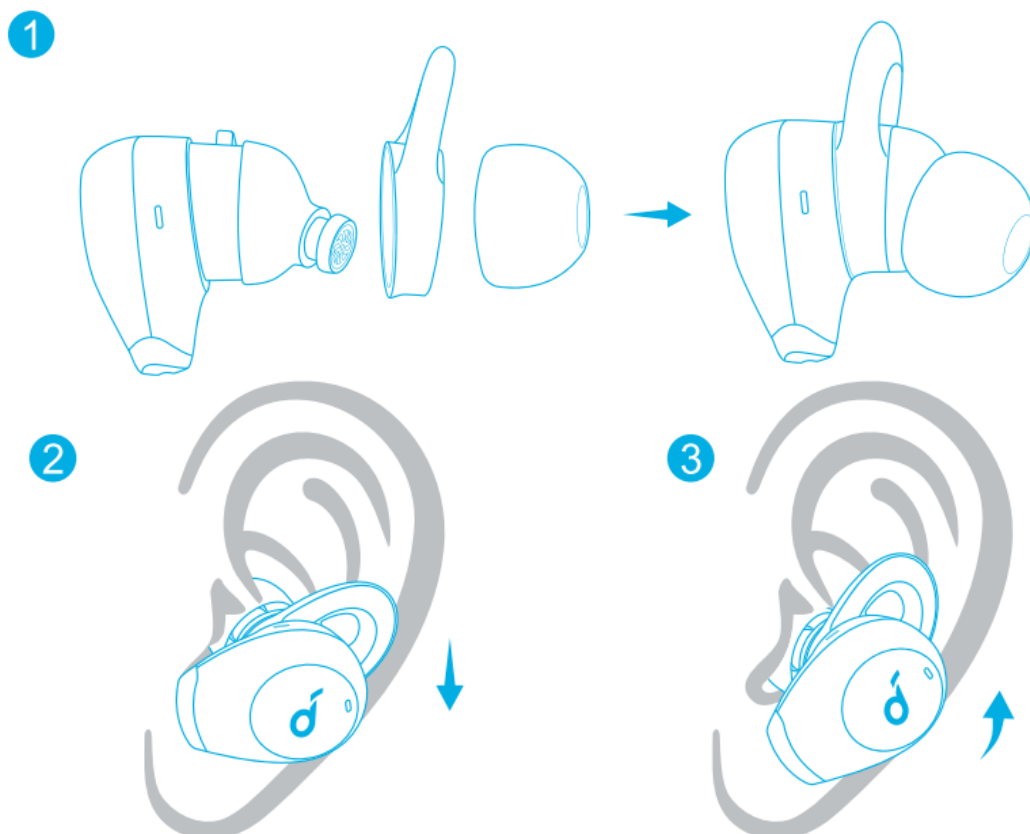


Apple and the Apple logo are trademarks of Apple Inc.



Wearing

1. Choose the EarTips and EarWings that fit your ears best.
2. Insert the earbuds into the inner canal of your ears and turn gently until you find the most comfortable and secure position.





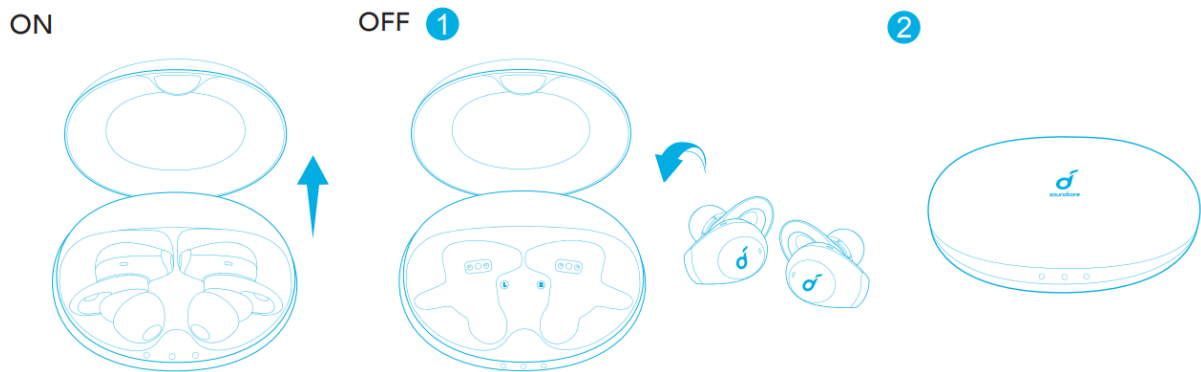
Your earbuds come with multiple pairs of EarTips and EarWings, among which Medium-sized are pre-installed.

Powering On/Off

Open the charging case, the earbuds will automatically power on.

→ The LED indicator on earbuds will light up white for 1 second.

To power off, place the earbuds in the charging case and close it.



When you're wearing the earbuds, they will not power off until out of battery. When you remove the earbuds, they will automatically power off after 30 minutes if no device is connected.

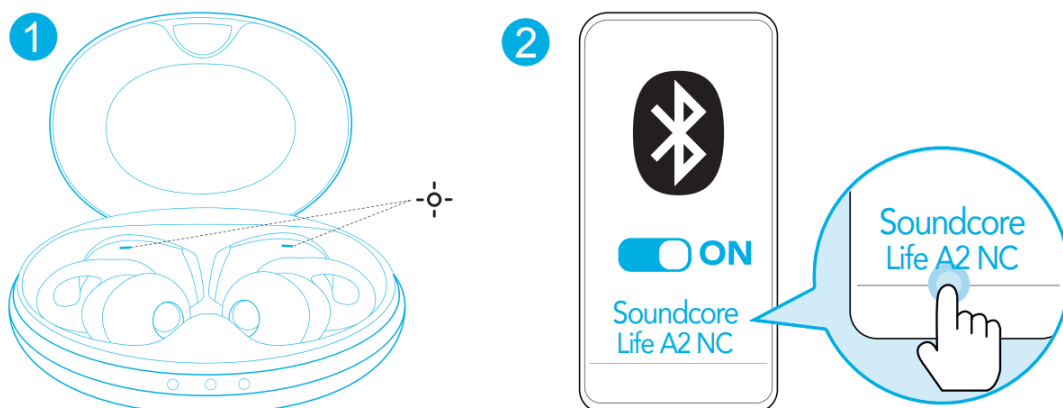
Bluetooth Pairing

1. Open the charging case, the earbuds will automatically enter the Bluetooth pairing mode.

→ The LED indicator on one earbud will flash quickly and on another earbud breathe slowly.

2 Select "**Soundcore Life A2 NC**" on your device's Bluetooth list to connect.

→ When successfully connected, the LED indicator on earbuds will light up white for 1 second and then turn off.

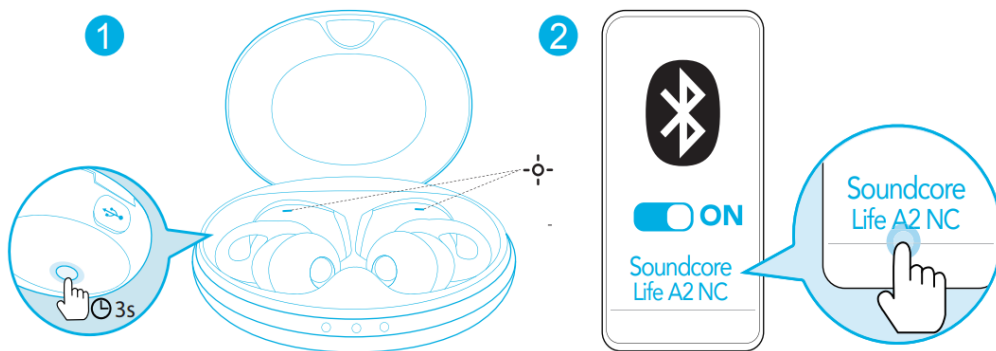


- Each time you power on your Soundcore earbuds, they will automatically connect to your last successfully connected device if available within the Bluetooth range.




- **Mono mode:** When Bluetooth connected, you can use either one of the earbuds only by placing the other one into the charging case and closing it.
- When powered on and connected, if either one of the earbuds is out of battery and powered off, you can keep using the other one.
- When you are on a call, place either one of the earbuds into the charging case and close it, the microphone in the other earbud will be activated.
- The right earbud is the primary earbud by default. If you want to change this, remove the right earbud from your ear and leave the charging case open, the microphone in the other earbud will be activated. Place the right earbud in the charging case and close it, the left earbud will become the primary earbud.

Pairing with another device

1. Place the earbuds in the charging case and leave the case open. Press and hold the button on the case for 3 seconds until the earbud LED indicators flash white to enter the pairing mode.
2. Select “**Soundcore Life A2 NC**” on your device’s Bluetooth list to connect.



Controls

	
Play/Pause	Tap twice (R)
Next track	Tap twice (L)
	
Answer a call	Tap twice (L/R)
Answer a second incoming call and put the current call on hold	
End/Reject a call	Press and hold for 2 seconds (L/R)
Switch between a call on hold and an active call	
	
Switch ambient sound modes (Noise Cancellation/Normal)	Press and hold for 2 seconds (L/R)
Mono mode	
Play/Pause	Tap twice
Answer a call	
End/Reject a call	Press and hold for 2 seconds
Activate Siri or other voice assistant software	

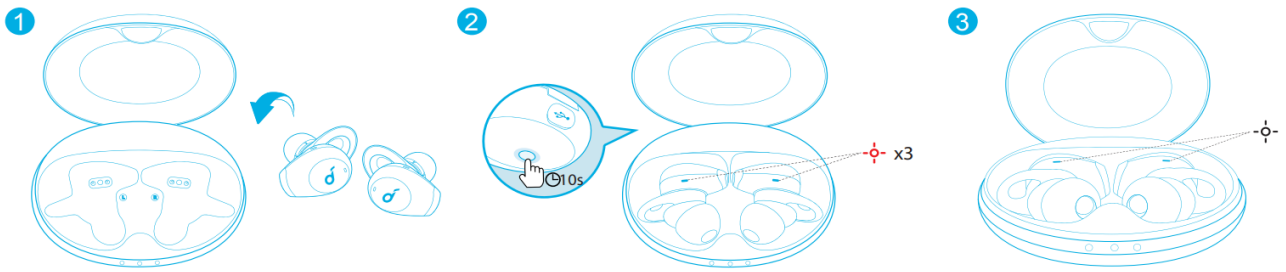


- All of the controls in stereo mode can be customized in the Soundcore app. In mono mode, controls cannot be customized in the app.
- Adjust the volume level via the connected device or in the Soundcore app.
- In stereo mode, noise cancellation mode is set by default. Each time you power on and connect, or switch to the stereo mode from mono mode, your earbuds will restore the last setting.
- Noise cancellation or transparency mode is unavailable in mono mode.

Reset

You might need to reset your earbuds if you experience any connectivity problems or function issues.

1. Place the earbuds in the charging case and leave the case open.
2. Press and hold the button on the case for 10 seconds until the earbud LED indicators flash red 3 times and then turn white.
3. Wait until the LED indicator on one of the earbuds flashes fast while the other breathes slowly. This confirms that the reset was successful and your earbuds can be connected normally.




The following two examples indicate the reset has not been successful and the previous steps should be repeated.

- If only one earbud LED indicator flashes;
- If both earbud LED indicators flash quickly.


Specifications



Specifications are subject to change without notice.

Input	5 V  0.75 A
Rated output power	5 mW @ 1% THD
Battery capacity	55 mA x 2 (earbuds); 750 mA (charging case)
Charging time	2 hours
Playtime (varies by volume level and content)	Up to 7 hours (Total 35 hours with the charging case)
Playtime (with ANC mode turned on)	Up to 6 hours (Total 30 hours with the charging case)
Playtime (with transparency mode turned on)	
Talk time	Up to 5 hours (Total 25 hours with the charging case)
Driver size	11 mm
Frequency response	20 Hz – 20 kHz
Impedance	16Ω
Waterproof level (Earbuds)	IPX5
Bluetooth version	V 5.0
Bluetooth range	10m/ 33ft

Documents / Resources

	<p>Soundcore Life A2 NC Wireless Multi Mode Noise Canceling Earbuds [pdf] User Manual Life A2 NC, Wireless Multi Mode Noise Canceling Earbuds, Life A2 NC Wireless Multi Mode Noise Canceling Earbuds</p>
---	---