



## soundcore Flare+ Portable Bluetooth Speaker User Manual

[Home](#) » [Soundcore](#) » soundcore Flare+ Portable Bluetooth Speaker User Manual 

### Contents

- 1 [soundcore Flare+ Portable Bluetooth Speaker User Manual](#)
- 2 [Safety Instructions](#)
- 3 [What's Included](#)
- 4 [At a Glance](#)
- 5 [Using Your Soundcore Flare+](#)
  - 5.1 [1. Turn on / off](#)
  - 5.2 [a. Bluetooth mode](#)
- 6 [Check available Light Effects modes on Soundcore App.](#)
- 7 [b. AUX-In mode](#)
- 8 [Charging your Soundcore Flare+](#)
- 9 [.Specifications](#)
- 10 [Soundcore App](#)
- 11 [Read More About This Manual & Download PDF:](#)
- 12 [Documents / Resources](#)
- 13 [Related Posts](#)

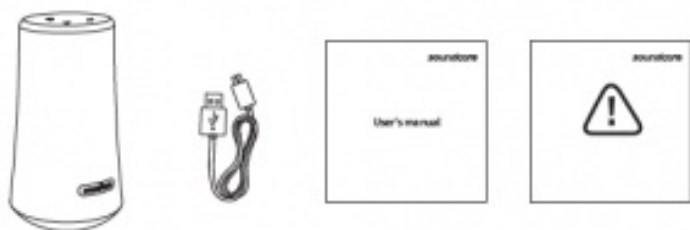
# soundcore Flare+ Portable Bluetooth Speaker User Manual



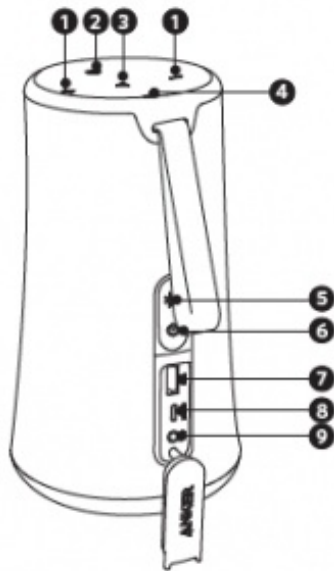
## Safety Instructions

- Avoid dropping
- Do not disassemble
- Soundcore Flare+ can be immersed in water up to 1m for up to 30
- Avoid extreme
- Do not use the device outdoors during
- Use original or certified
- Do not use any corrosive cleaner/oil to

## What's Included



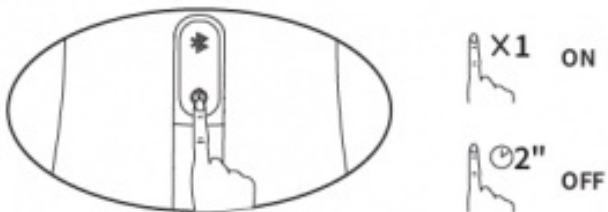
## At a Glance



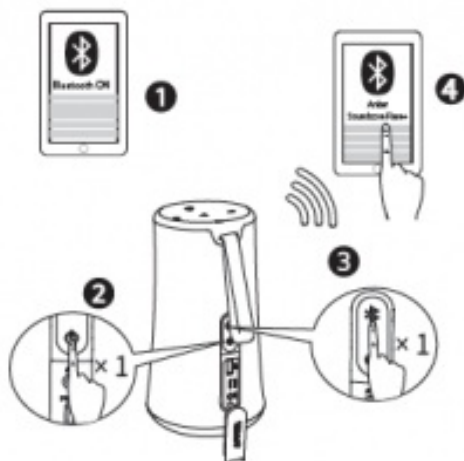
- |                                      |                          |
|--------------------------------------|--------------------------|
| 1. Volume Buttons for Volume Control | 6 Power Button           |
| 2. Bass Up Button                    | 7 USB port               |
| 3. Multi-function Button             | 8 micro USB Port         |
| 4. Light Effects Button              | 9 3.5mm Audio Input Port |
| 5. Bluetooth Button                  |                          |

## Using Your Soundcore Flare+

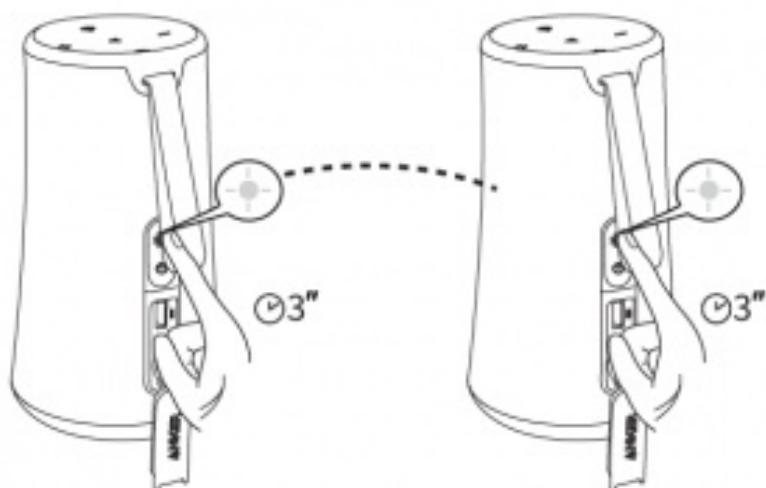
### 1. Turn on / off



### a. Bluetooth mode



Flashing White	Bluetooth Pairing Mode
Solid White	Connected to a device
	Enter True Wireless Stereo Group Mode / Disconnect True Wireless Stereo
Double Flashing White	True Wireless Stereo Group Mode
Solid White	Connected to True Wireless Stereo



With True Wireless Stereo technology, you can pair your Soundcore EN Flare+ with another Soundcore Flare+ to explore the best sound effects with left and right sound channels separated on both speakers.

Play / Pause

Play Next Song

Play Previous Song

Press to turn Bass Up on and off

Press and hold for 2 seconds to reset Equalizer settings

Answer Call / End Call

Reject Call / Switch between a call on hold and an active call

End current call and answer incoming call / End current call and switch to call on hold

Switch audio source between Speaker and Phone

Put current call on hold and answer incoming call

Activate Siri / Other Voice Control Software

Volume Up / Down

Solid White

On a Call

Flashing White

Incoming Call

Press and hold for 2 seconds to turn Light Effects Off

Press to turn Light Effects On

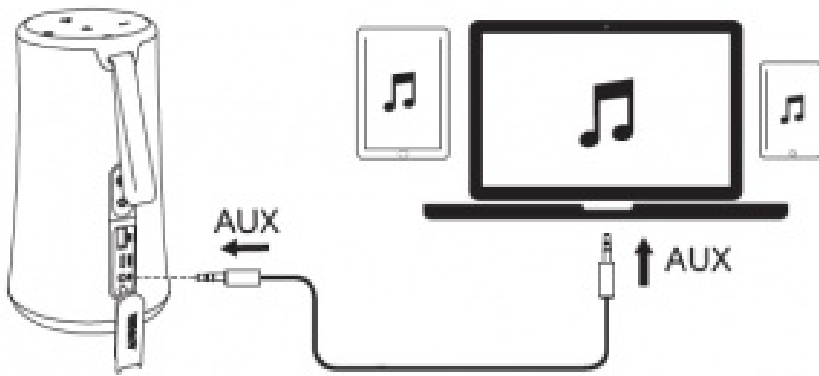
Press once to switch between Light Effects modes

### Check available Light Effects modes on Soundcore App.



When turned on, Soundcore Flare+ will automatically connect to the last connected device if available. If not, press the Bluetooth pairing button to activate pairing mode. To pair a different device, press the Bluetooth button to re-enter pairing mode. Then repeat the pairing steps. Having connection problems? Remove Soundcore Flare+ from your device's Bluetooth history and ensure it's less than 3 feet away. Then try pairing again. To get the best sound quality, make sure there is a clear line of sight between the connected device and your speaker.

### b. AUX-In mode



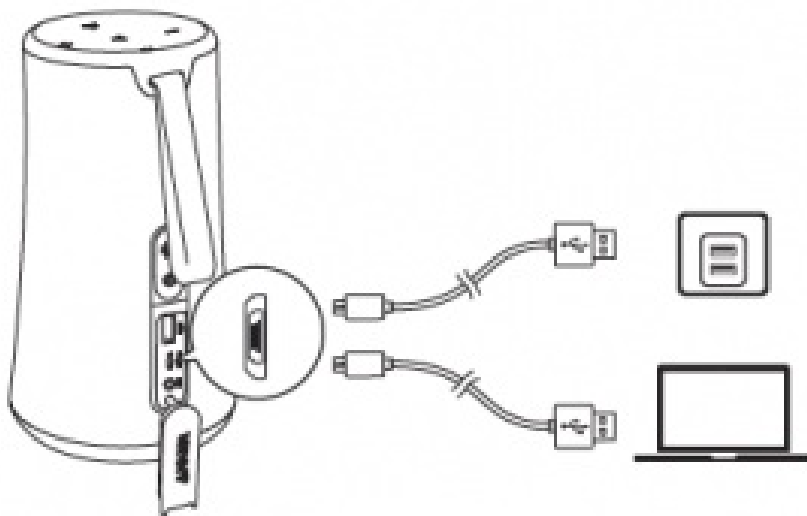
\* SoundLine AUX cable sold separately.

Plugging in an audio cable will automatically switch to AUX mode. When using AUX mode, control audio playback via the connected device.



Plugging in an audio cable will automatically switch to AUX mode. When using AUX mode, control audio playback via the connected device.

## Charging your Soundcore Flare+



Slow Flashing Red	Low Battery
Solid Red	Charging
<b>Off</b>	Fully Charged



Use the included USB cable to charge your Soundcore Flare+ and make sure it is fully charged before its first use.

Disconnect your speaker from the charger when fully charged. Do not charge your speaker for extended periods. When not in use, store your speaker in a cool place

## .Specifications



Specifications are subject to change without notice.

Input: 5 V 2 A

Charge out: 5 V 1 A

Audio output: 25 W

Charging time: 4.0 hours

Play time (varies by volume level and music content): 20 hours

Size: 100 x 100 x 182 mm

Weight (without packaging): 853 g / 30.1 oz

Bluetooth version: V5.0

Bluetooth range: 20 m / 66 ft



**Soundcore App**

- Light effect
- Update firmware
- Wave Equalizer
- Stereo or Boost mode
- Rename
- More






Apple and the Apple logo are trademarks of Apple Inc

Google Play and the Google Play logo are trademarks of Google Inc.

Read More About This Manual & Download PDF:

Documents / Resources

	<a href="#">soundcore Flare+ Portable Bluetooth Speaker</a> [pdf] User Manual Flare Portable Bluetooth Speaker
---	---