

Soundcore A3130 Portable Bluetooth Speaker



Soundcore A3130 Portable Bluetooth Speaker User Manual

[Home](#) » [Soundcore](#) » Soundcore A3130 Portable Bluetooth Speaker User Manual 

Contents

- [1 Soundcore A3130 Portable Bluetooth Speaker](#)
- [2 Product Usage Instructions](#)
- [3 At a Glance](#)
- [4 Charging](#)
- [5 Powering On / Off](#)
- [6 Using Your Speaker](#)
- [7 Spatial Sound](#)
- [8 LDAC](#)
- [9 AUX Mode](#)
- [10 Button Controls](#)
- [11 Reset](#)
- [12 App](#)
- [13 Specifications](#)
- [14 Documents / Resources](#)
 - [14.1 References](#)

soundcore

Soundcore A3130 Portable Bluetooth Speaker



Specifications

- DC power input
- Battery capacity
- Audio output power
- Charging time
- Playtime (varies by volume level and music content)

Product Usage Instructions

Charging

Use a certified USB-C cable and charger to prevent any damage. Fully charge this speaker before the first use to prolong the lifespan of the built-in battery.

Powering On / Off

- **Power On:** Press the power button once for steady white light. The speaker will automatically power off after 20 minutes if no device is connected.
- **Power Off:** Press and hold the power button for at least 2 seconds until the light turns off.

Using Your Speaker

- **Bluetooth Mode:** Press once for flashing blue light to enter Bluetooth pairing mode. Enjoy music through your Bluetooth-enabled devices.

TWS (True Wireless Stereo) Mode

Pair two identical Motion X600 speakers for stereo sound. Connect one speaker with your device, then press and hold the Bluetooth button on both speakers for at least 2 seconds to enter TWS pairing mode.

Spatial Sound

- **Turn Spatial Sound On/Off:** Press once for steady white light to turn spatial sound on or off.

AUX Mode

Insert a 3.5mm AUX cable (not included) to play audio on an external device. Control audio playback via the connected device when in AUX mode.

Button Controls

Various functions can be performed with different button presses, including power on/off, Bluetooth pairing, TWS pairing, spatial sound control, BassUp activation, volume control, playback control, and call handling.

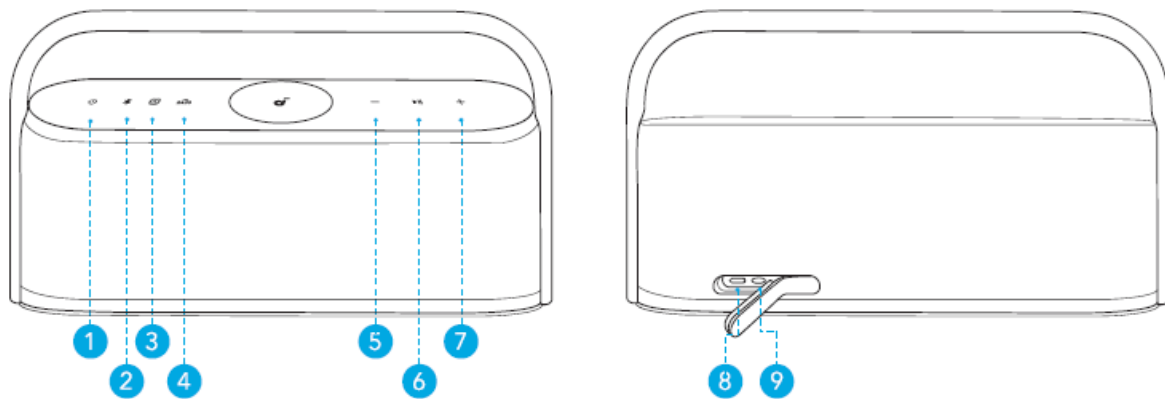
App

For additional features and settings, use the soundcore app available from respective app stores.

Frequently Asked Questions (FAQ)

- Q: How do I reset the speaker?
A: Press and hold the Bluetooth button and volume up button simultaneously for at least 4 seconds to reset the speaker.
- Q: What is LDAC and how can I experience it?
A: LDAC is a codec for high-quality audio. To experience LDAC, use devices powered by Android 8.0 or later, open the soundcore app, go to Settings, click on Sound Mode, and select Preferred audio quality to switch to LDAC codec.

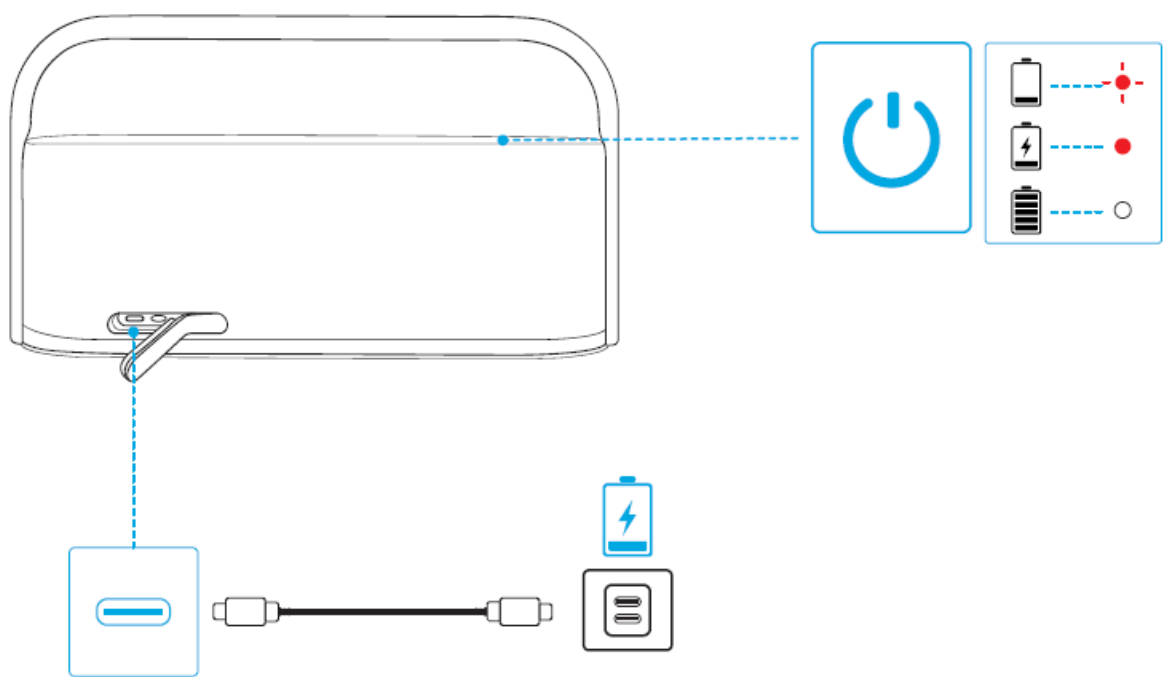
At a Glance



1. Power
2. Bluetooth
3. Spatial Sound
4. BassUp
5. Volume Down
6. Play / Pause
7. Volume Up
8. USB-C Charging Input
9. AUX IN

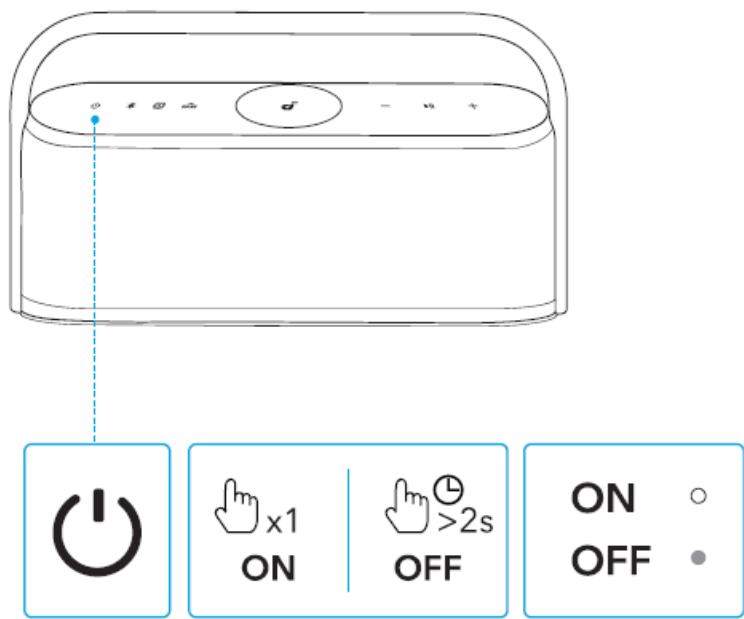
Charging





- Use a certified USB-C cable and charger to prevent any damage.
- Fully charge this speaker before the first use to prolong the lifespan of the built-in battery.



	Flashing red	Low battery
	Steady red	Charging
	Steady white	Fully charged

Powering On / Off



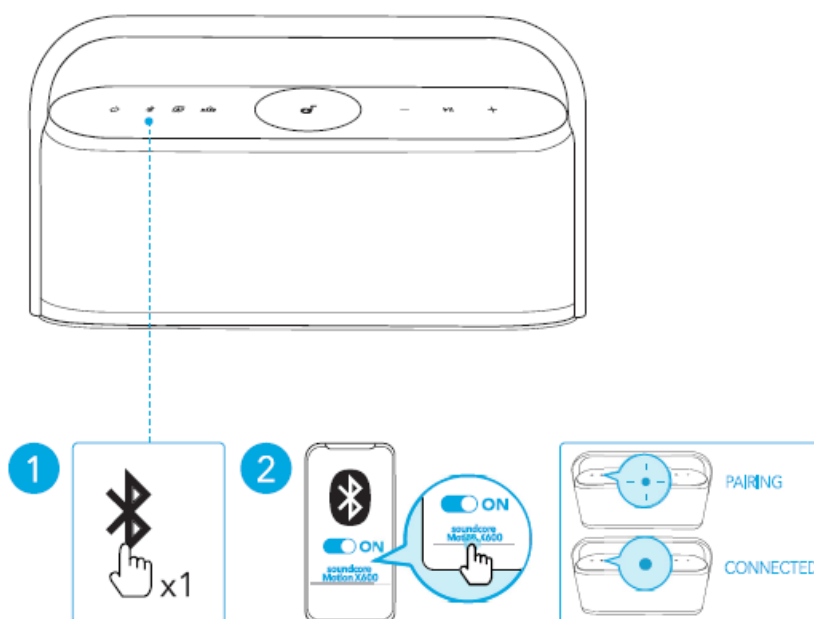
	Press once	Power on
	Steady white	
	Press and hold for at least 2 seconds	Power off
	Light off	




This speaker will power off automatically after 20 minutes if no device is connected.

Using Your Speaker

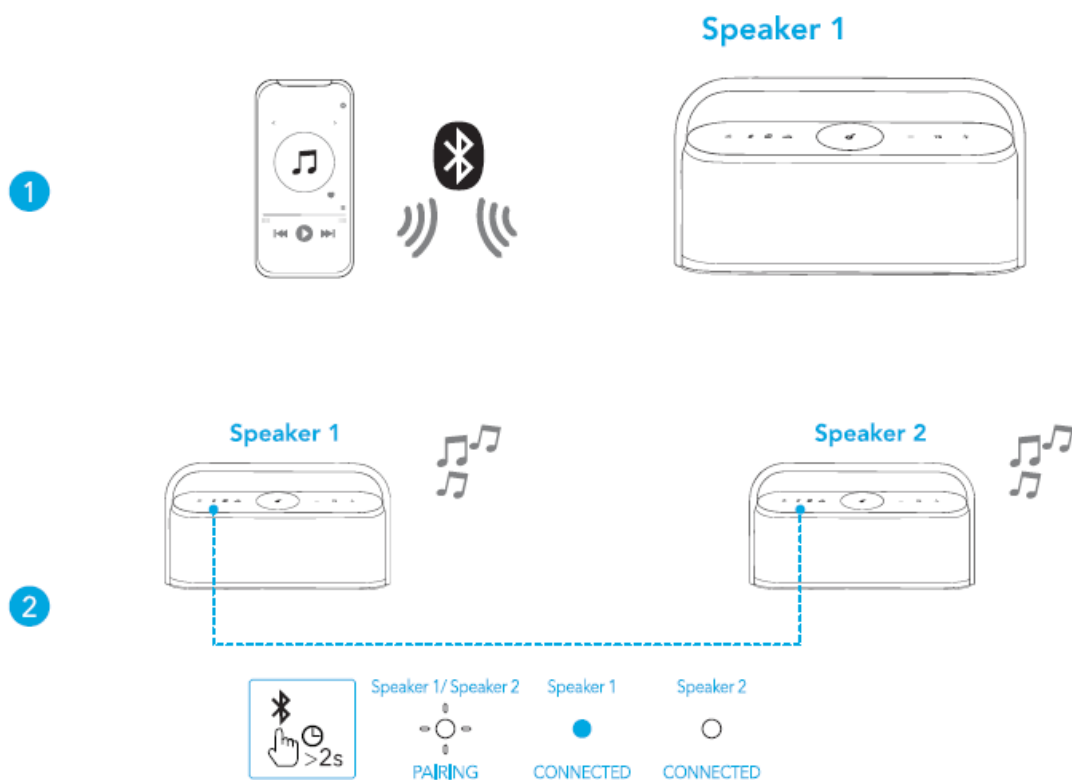
Bluetooth Mode

With this speaker, you can enjoy music through your Bluetooth-enabled devices

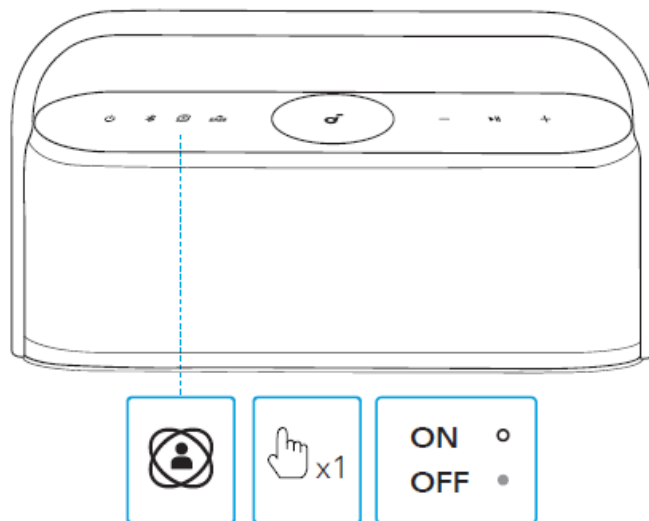


	Press once	Enter Bluetooth pairing mode
	Flashing blue	Bluetooth pairing
	Steady blue	Bluetooth connected

- To re-enter Bluetooth pairing mode, press the Bluetooth button once.
- This speaker can only play music on one mobile device at a time. To play from another connected device, pause the device that's currently active first.
- Each time you power on your speaker, it will automatically connect to your last connected device if available within the Bluetooth range. If not, press the Bluetooth button to enter Bluetooth pairing mode.



	Press and hold for at least 2 seconds	Enter TWS pairing mode
	Flashing white	TWS pairing
	Steady blue (Speaker 1)	TWS connected
	Steady white (Speaker 2)	



	Press once	Turn spatial sound on / off
	Steady white	Spatial sound on
	Light off	Spatial sound off

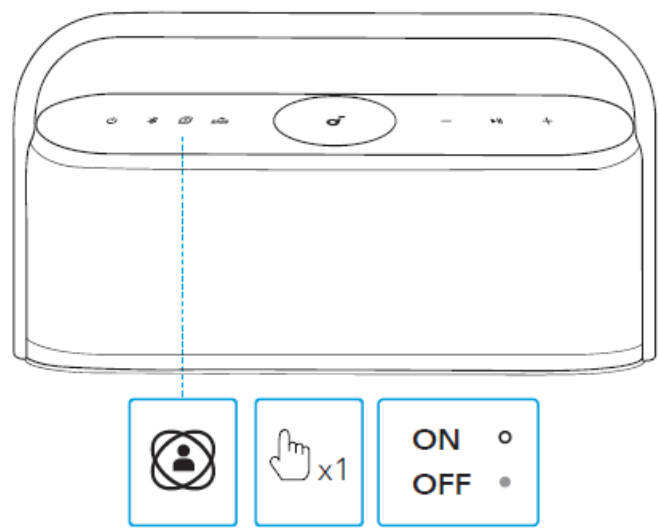
TWS (True Wireless Stereo) Mode

Two identical Motion X600 speakers can pair with each other for stereo sound. Both speakers can play the same audio (one as the left channel and the other as the right channel).

1. Connect either speaker with your Bluetooth device.
2. On both speakers, press and hold the Bluetooth button for at least 2 seconds to enter TWS pairing mode

To exit TWS mode, press and hold the Bluetooth button for at least 2 seconds.

Spatial Sound



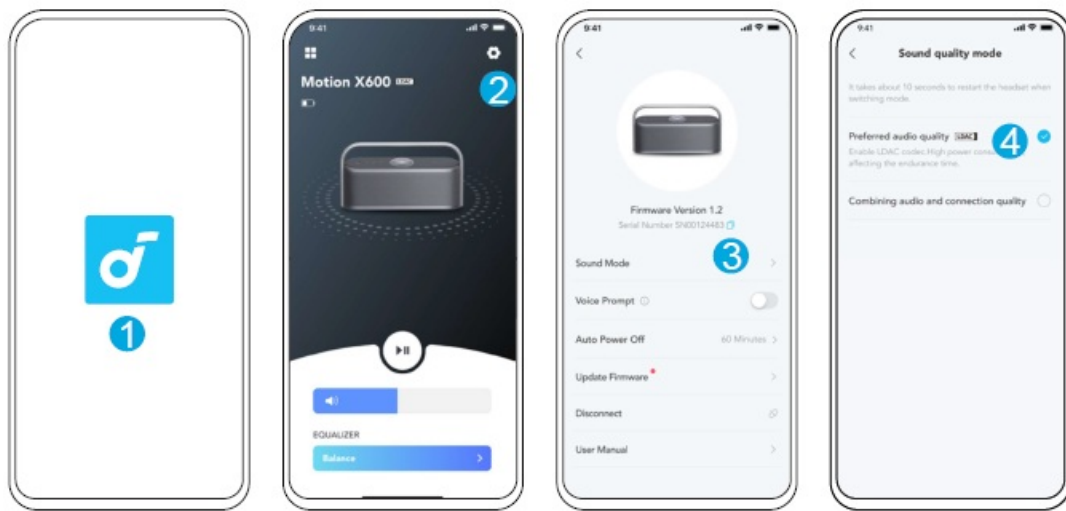
	Press once	Turn spatial sound on / off
	Steady white	Spatial sound on
	Light off	Spatial sound off

Spatial sound places sound all around you to create an immersive listening experience

LDAC

Use devices powered by Android 8.0 or later to experience LDAC-quality sound.

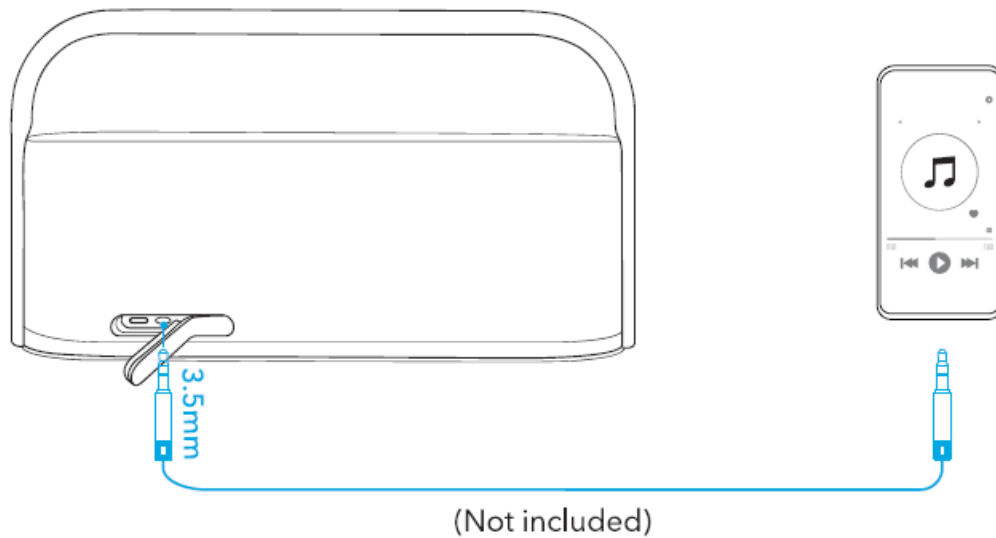
1. Open the soundcore app.
2. Go to the Settings icon on the home page.
3. Click on “Sound Mode.”
4. Select “Preferred audio quality” to switch to LDAC codec.



- It takes about 10 seconds to switch audio codecs. You may be requested to update the speaker's firmware if available.
- LDAC provides higher-quality sound, increases power consumption, and reduces playtime.
- Enable LDAC in a low-interference environment to ensure a stable Bluetooth connection.





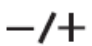

AUX Mode

Insert a 3.5mm AUX cable (not included) to play audio on an external device.



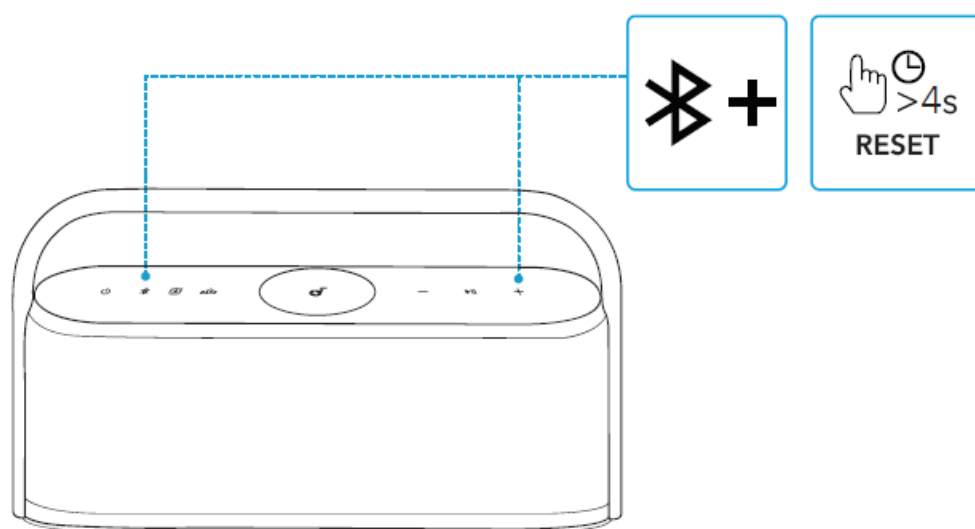
When using AUX mode, control audio playback via the connected device.

Button Controls

	Press once	Power on
	Press and hold for at least 2 seconds	Power off
	Press once	Enter Bluetooth pairing mode
	Press and hold for at least 2 seconds	Enter / exit TWS pairing mode
	Press once	Turn spatial sound on / off
	Press once	Turn BassUp on / off
	Press	Volume up / down
	Press once	Play / pause
	Press twice	Next track
	Press three times	Previous track
	Press once	Answer / end a call
	Press and hold for at least 2 seconds	Reject a call
	Press and hold for at least 2 seconds	Activate voice assistant software

Reset

Press and hold the Bluetooth button and volume up button simultaneously for at least 4 seconds to reset the speaker.



App

- Download the soundcore app to enhance your experience.
- Product information: Check the product name and software version, or read the user manual.

- **Firmware update:** You will be informed once a new version of firmware is detected when you connect the speaker to the app.
- **Battery status:** Indicates the remaining battery level of your speaker.
- **Volume control:** Adjust the volume level via the app without pressing the buttons on the speaker.
- **EQ settings:** There are 6 EQ settings you can choose from in the app to optimize your experience while enjoying different music genres.
 - **soundcore Signature:** Standard EQ mode optimized for well-balanced sound.
 - **Voice:** Voices stand out more clearly from other ambient sounds.
 - **Treble Boost:** High frequencies are enhanced.
 - **Balance:** No enhancement for high-frequency and low-frequency sounds.
 - **Custom:** Customize the EQ setting to suit you in the app.
 - **BassUp:** Turn on BassUp to enhance the low-frequency sound.
- **Set auto-power off time:** Set an auto-power off time (5 / 10 / 20 / 60 minutes, 20 minutes by default). The speaker will automatically power off when the time is up. **Voice prompt:** Mute or restore the voice prompt while powering on / off.



Google Play and the Google Play logo are trademarks of Google Inc.



Apple and the Apple logo are trademarks of Apple Inc.

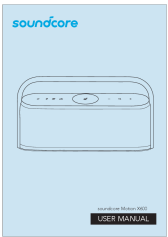


Specifications

Specifications are subject to change without notice

DC power input	5V 3A
Battery capacity	6400mAh / 7.2V
Audio output power	50W
Charging time	6 hours
Playtime (varies by volume level and music content)	12 hours
Waterproof level	IPX7
Bluetooth version	5.3
Bluetooth range	100m / 328ft

Documents / Resources

	<p>Soundcore A3130 Portable Bluetooth Speaker [pdf] User Manual</p> <p>A3130 Portable Bluetooth Speaker, A3130, Portable Bluetooth Speaker, Bluetooth Speaker, Speaker</p>
--	--

References

- [User Manual](#)

[Manuals+.](#) [Privacy Policy](#)

This website is an independent publication and is neither affiliated with nor endorsed by any of the trademark owners. The "Bluetooth®" word mark and logos are registered trademarks owned by Bluetooth SIG, Inc. The "Wi-Fi®" word mark and logos are registered trademarks owned by the Wi-Fi Alliance. Any use of these marks on this website does not imply any affiliation with or endorsement.