

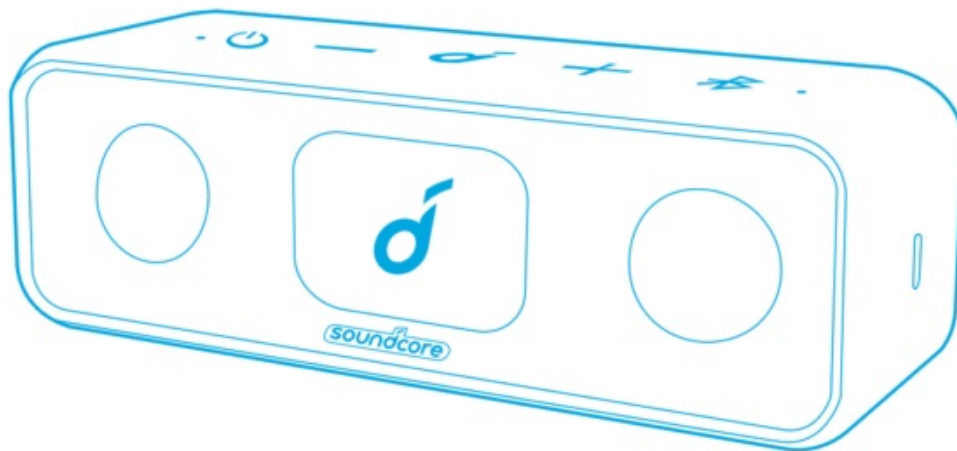


Soundcore A3117 3 Bluetooth speaker User Manual

[Home](#) » [Soundcore](#) » Soundcore A3117 3 Bluetooth speaker User Manual 

soundcore

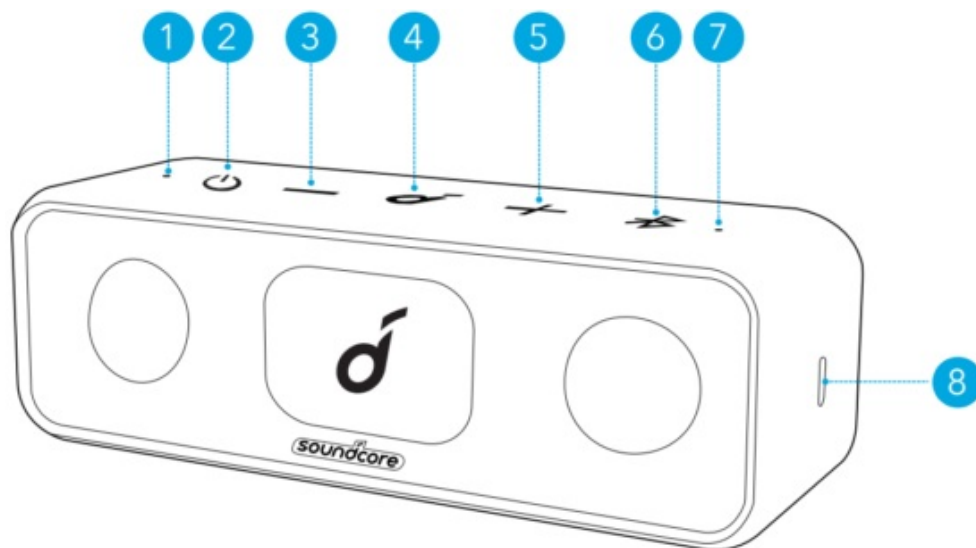
A3117 3 Bluetooth speaker
User Manual



Contents

- [1 At a Glance](#)
- [2 Charging](#)
- [3 Powering On/Off](#)
- [4 Using your Soundcore](#)
- [3](#)
- [5 Soundcore App](#)
- [6 Specifications](#)
- [7 Documents / Resources](#)
- [8 Related Posts](#)

At a Glance

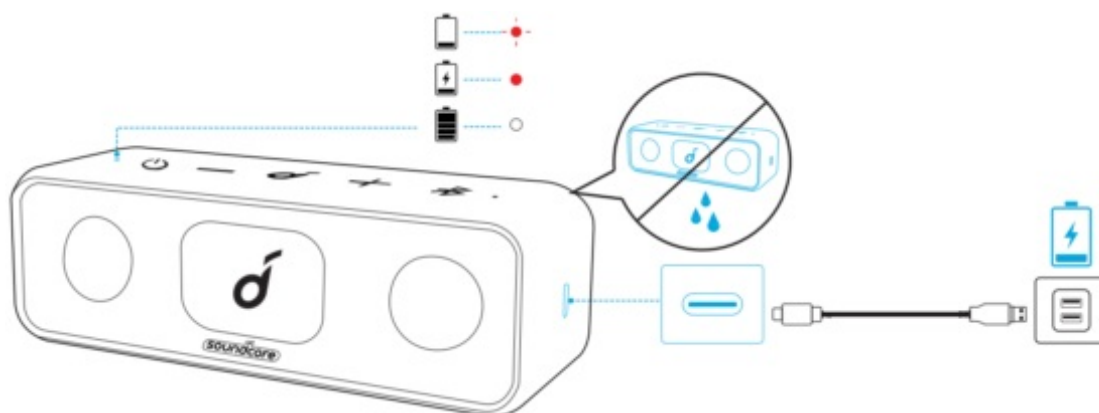





1. Power LED
2. Power button
3. Volume down button
4. Multi-function button
5. Volume up button
6. Bluetooth/PartyCast button
7. Bluetooth/PartyCast LED
8. USB-C charging port

Charging

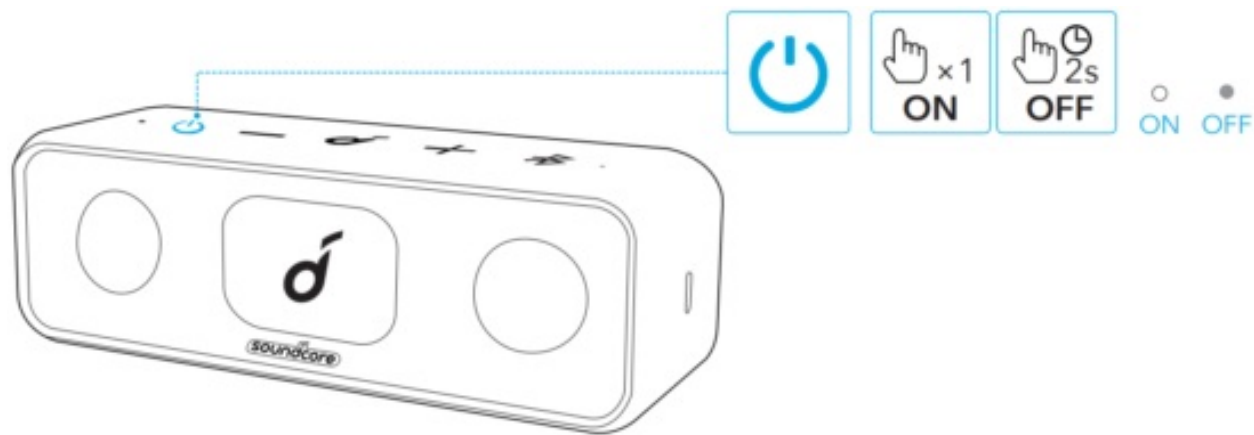


- Use the provided USB-C cable to prevent any damage.
- Fully charge this speaker before the first use to prolong the lifespan of the built-in battery.
- Disconnect this speaker from the charger when fully charged. Do not charge for extended periods.



	Flashing red	Low battery
	Steady red	Being charged
	Steady white	Fully charged

Powering On/Off



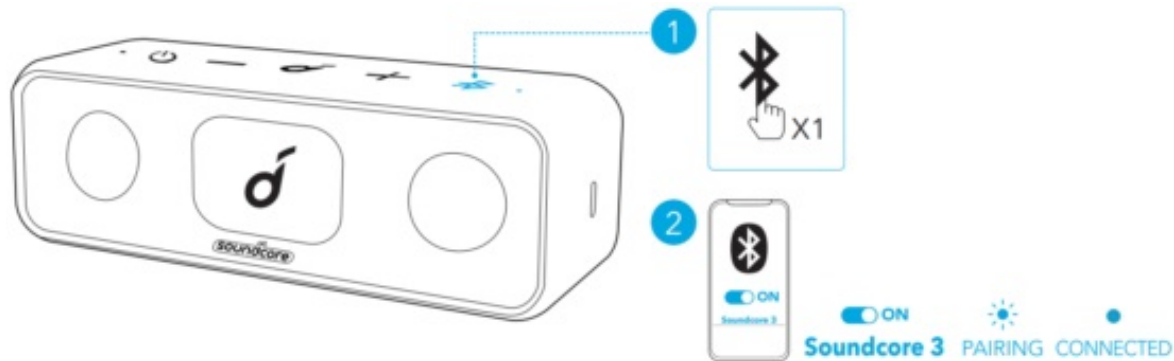
Power on		Press
Power off		Press and hold for 2 seconds

This speaker will power off automatically 30 minutes after no audio input or button inactivity.

Using your Soundcore 3

Bluetooth Mode

With this speaker, you can enjoy music through your Bluetooth-enabled devices.



	Press	Enter Bluetooth pairing mode
	Flashing blue	Bluetooth pairing
	Steady blue	Bluetooth connected



- Dual Bluetooth Connection: This speaker can pair up to 2 mobile devices via Bluetooth. To pair with another device, press the Bluetooth button to re-enter Bluetooth pairing mode.
- This speaker can only play music on one mobile device at a time. To play from another connected device,

pause the currently active device first.

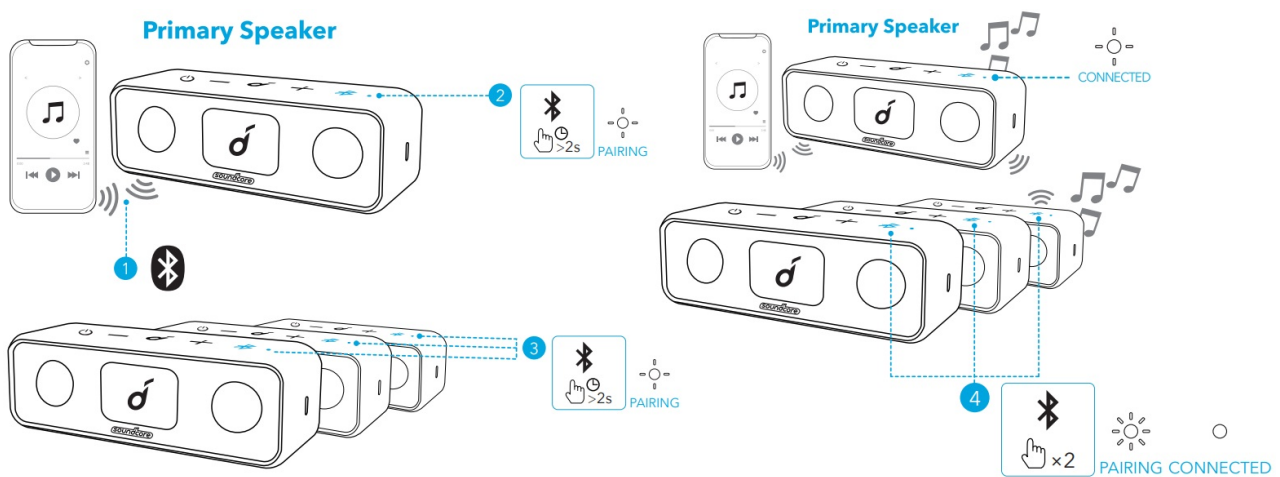
- Each time you power on your Soundcore speaker, it will automatically connect to your last connected device that is available within the Bluetooth range. If not,

PartyCast Mode

You can wirelessly connect up to 100 identical Soundcore 3 speakers together.

1. Connect one Soundcore 3 speaker with your smartphone or tablet as the primary speaker.
2. Press and hold the Bluetooth button on the primary speaker and all desired speakers to enter pairing mode.









>> When successfully connected, the Bluetooth LED on the primary speaker will continue flashing white, while on the secondary speakers will turn white.




When PartyCast mode is successfully entered:

- Any secondary speaker can be switched to become the primary speaker by pressing the Bluetooth button twice and connecting to your smartphone. Any primary speaker can be switched to become a secondary speaker by pressing the Bluetooth button twice and searching for an available primary speaker.
- To exit the PartyCast mode, press and hold the Bluetooth button on any speaker for 2 seconds.

Button Controls

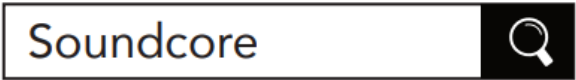
	Press	Play/Pause
	Press twice	Next track
	Press thrice	Previous track
	Press or press and hold	Adjust volume
	Press	Answer/End a call
	Press	Answer a second incoming call and put
	Press and hold for 2 seconds	Reject an incoming call
	Press and hold for 2 seconds	Switch between a call on hold and an ac

	Press and hold for 2 seconds	A
---	------------------------------	---

Soundcore App

Download the Soundcore App for an enhanced product experience.

- Check product information
- Update firmware
- Indicate battery status
- Remotely control the volume and play/pause
- Customize EQ settings
- Set Auto-power off time



Google Play and the Google Play logo are trademarks of Google Inc.



Apple and the Apple logo are trademarks of Apple Inc.

Specifications

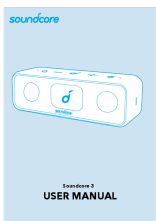


Specifications are subject to change without notice

DC power input	5 V=2 A
Battery capacity	5200 mAh
Audio output power	8 W x 2
Charging time	Appr. 4 hours
Playtime (varies by volume level and music content) Up to 24 hours	Up to 24 hours
Waterproof level	IPX7
Bluetooth version	5.0
Bluetooth range	20 m / 66 ft

soundcore

Documents / Resources

 <p>The image shows the cover of the user manual for the Soundcore A3117 3 Bluetooth speaker. It features a light blue background with a white speaker icon in the center. The text 'soundcore' is at the top, and 'A3117 3 USER MANUAL' is at the bottom.</p>	<p>Soundcore A3117 3 Bluetooth speaker [pdf] User Manual A3117 3 Bluetooth speaker, 3 Bluetooth speaker, Bluetooth speaker, speaker</p>
--	--