



soundcore 2s Portable Bluetooth Speaker Instruction Manual

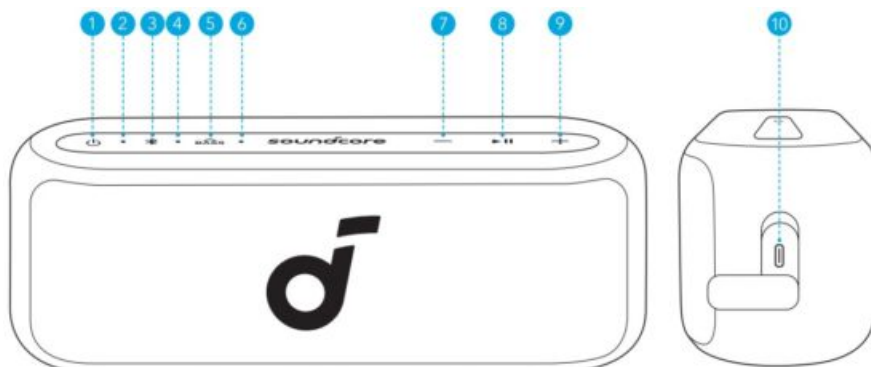
[Home](#) » [Soundcore](#) » soundcore 2s Portable Bluetooth Speaker Instruction Manual 

soundcore 2s Portable Bluetooth Speaker Instruction Manual

Contents

- 1 At a Glance
- 2 Charging Your Speaker
- 3 Powering On / Off
- 4 Using Your Speaker
- 5 Button Controls
- 6 soundcore App
- 7 Reset
- 8 Specifications
- 9 Documents / Resources
- 9.1 References

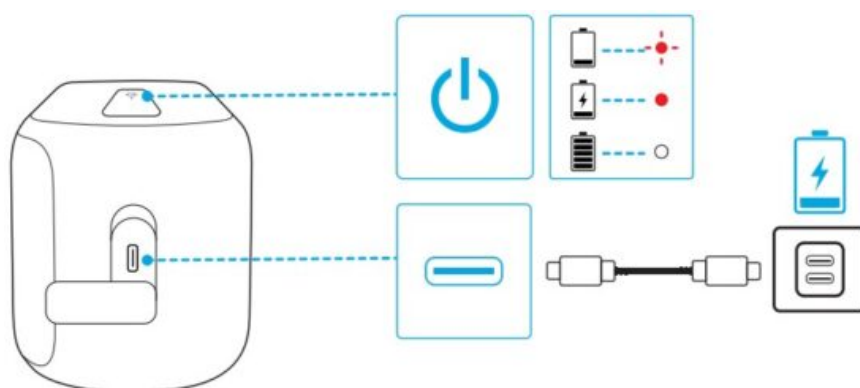
At a Glance



| | | | |
|---|------------------|----|---------------------|
| 1 | Power Button | 6 | BassUP LED |
| 2 | Power LED | 7 | Volume Down Button |
| 3 | Bluetooth Button | 8 | Play/Pause Button |
| 4 | Bluetooth LED | 9 | Volume Up Button |
| 5 | BassUP Button | 10 | USB-C Charging Port |

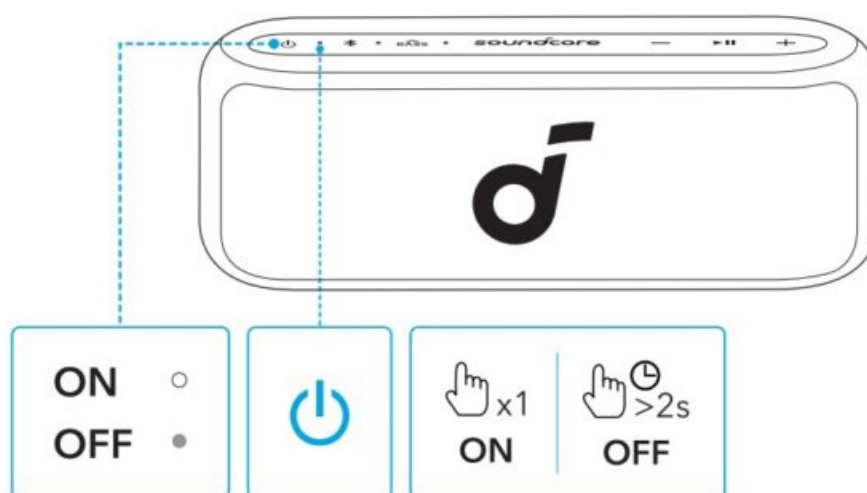
Charging Your Speaker





- Use a certified USB-C cable and charger to prevent any damage.



| | | |
|--|--------------|---------------|
| | Flashing Red | Low Battery |
| | Steady Red | Being Charged |
| | Steady White | Fully Charged |

Powering On / Off



| | | |
|---|---------------------------------------|-----------|
|  | Press or Press and Hold for 2 Seconds | Power On |
|  | Steady White | |
|  | Press and Hold for 2 Seconds | Power Off |
|  | Light Off | |

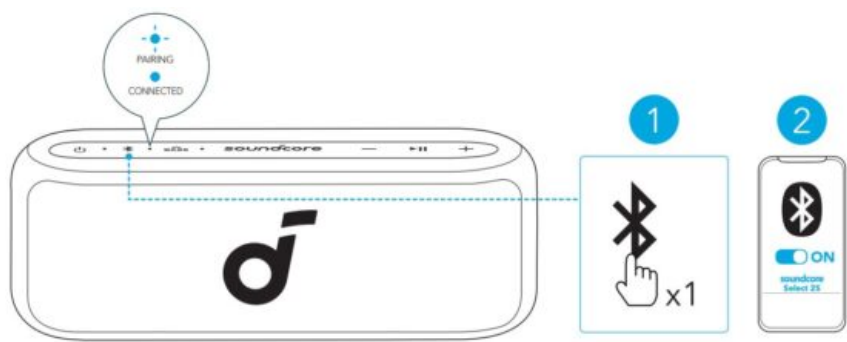





This speaker will power off automatically after 20 minutes if no device is connected.

Using Your Speaker

Bluetooth Mode

Press the Bluetooth button to enter Bluetooth pairing mode, then select “soundcore Select 2S” from the Bluetooth list to connect.



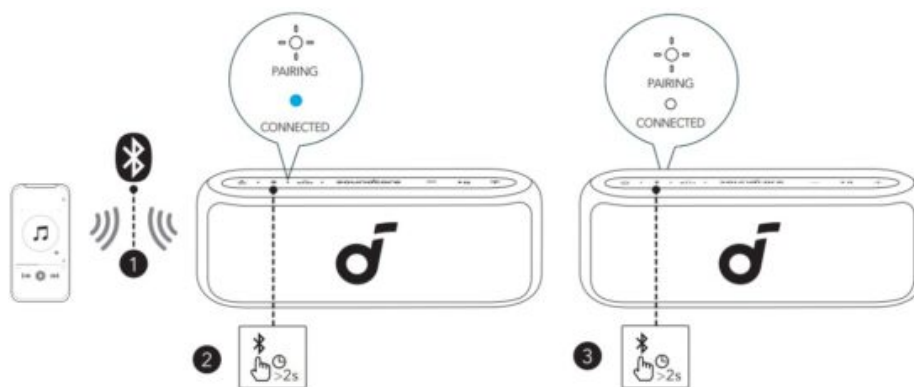
| | | |
|---|---------------|-------------------------------------|
|  | Press | Enter / Exit Bluetooth Pairing Mode |
|  | Flashing Blue | Bluetooth Pairing |
|  | Steady Blue | Bluetooth Connected |



- To re-enter Bluetooth pairing mode, press the Bluetooth button once.
- This speaker can only play music on one mobile device at a time. To play from another connected device, pause the device that’s currently active first.
- Each time you power on your speaker, it will automatically connect to your last connected device if available within the Bluetooth range. If not, press the Bluetooth button to enter Bluetooth pairing mode.

True Wireless Stereo (TWS) Mode

Two identical soundcore speakers can pair with each other for stereo sound. Both speakers can play the same audio (one as the left channel and the other as the right channel).
With one speaker connected to a smartphone, press and hold the Bluetooth button for 2 seconds on two speakers to enter TWS pairing mode.



| | | |
|--|------------------------------|------------------------|
| | Press and Hold for 2 Seconds | Enter TWS Pairing Mode |
| | Flashing White | TWS Pairing |
| | Steady Blue (Speaker 1) | TWS Connected |
| | Steady White (Speaker 2) | |

Button Controls

| | | |
|--|---------------------------------------|-------------------------------|
| | Press or Press and Hold for 2 Seconds | Power On |
| | Press and Hold for 2 Seconds | Power Off |
| | Press | Play / Pause |
| | Press Twice | Next Track |
| | Press Three Times | Previous Track |
| | Press | Answer / End a Call |
| | Press and Hold for 2 Seconds | Reject a Call |
| | Press | Enter Bluetooth Pairing Mode |
| | Press and Hold for 2 Seconds | Enter / Exit TWS Pairing Mode |
| | Press | Volume Up / Down |
| | Press | Turn BassUP On/Off |

soundcore App

Download the soundcore app to enhance your experience.



Google Play and the Google Play logo are trademarks of Google Inc.



Apple and the Apple logo are trademarks of Apple Inc.



<http://dl-soundcore.soundcore.com/qcdl?flow=soundcore>

Product information: Check the product name and software version, or read the user manual.

Firmware update: You will be informed once a new version of firmware is detected when you connect the speaker with the app.

Battery status: Indicates the remaining battery level of your speaker.

Volume control: Adjust the volume level via the app without pressing the buttons on the speaker.

EQ settings: There are various preset EQ settings you can choose from in the app to optimize your experience while enjoying different music genres.

Set Auto-power off time: The speaker will automatically power off when time is up.

Speaker prompt: Mute or restore the speaker prompt while powering on/off.

Reset

Press and hold the Bluetooth button and volume up button simultaneously for at least 4 seconds to reset the speaker.

Specifications

Specifications are subject to change without notice.

| | |
|---|----------------------------|
| Power Input | 5V \equiv 2A |
| Battery Capacity | 2400mAh/7.3V |
| Audio Output | 20W |
| Power Speaker Driver | 1.5" Full Range \times 2 |
| Charging Time | < 4 Hours |
| Playtime (varies by volume level and music content) | Up to 16 Hours |
| Waterproof Level | IPX7 |
| Bluetooth Version | V5.4 |
| Bluetooth Range | 70m / 230ft |

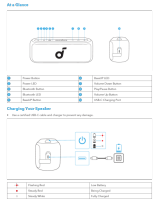
Hereby, Anker Innovations Limited declares that this device is in compliance with The Product Security and Telecommunications Infrastructure (Security Requirements for Relevant Connectable Products) Regulations 2023. For the Statement of Compliance, visit the website: <https://uk.soundcore.com/pages/psti-related>.

Note: The 'x' of SN Code: xxxxxxxxxxxxxxxx is a variable, see below table.

| Variable 'x' | Range of variable | Content |
|-----------------|-------------------|---|
| Seventh | 0-9 or A-F | Denotes the hardware version which is not effected on the safety compliance. |
| Eighth | 8,9,A,B,C... | Denotes the year, 8 means 2018, 9 means 2019, A means 2020, B means 2021, C means 2022, and so on. |
| Ninth and tenth | 01,02,03... | Denotes weeks, 01 means the first week in this year, 02 means the secondary week in this year, and so on. |
| Eleventh | 1-7 | Denotes date, 1 means Monday, 2 means Tuesday..., 7 means Sunday and so on. |
| The last five | 00001-99999 | Denotes serial No. |



Documents / Resources

| | |
|--|--|
|  | <p>soundcore 2s Portable Bluetooth Speaker [pdf] Instruction Manual</p> <p>2s Portable Bluetooth Speaker, 2s, Portable Bluetooth Speaker, Bluetooth Speaker, Speaker</p> |
|--|--|

References

- [PSTI Related - soundcore UK](#)
- [User Manual](#)

[Manuals+.](#) [Privacy Policy](#)

This website is an independent publication and is neither affiliated with nor endorsed by any of the trademark owners. The "Bluetooth®" word mark and logos are registered trademarks owned by Bluetooth SIG, Inc. The "Wi-Fi®" word mark and logos are registered trademarks owned by the Wi-Fi Alliance. Any use of these marks on this website does not imply any affiliation with or endorsement.