

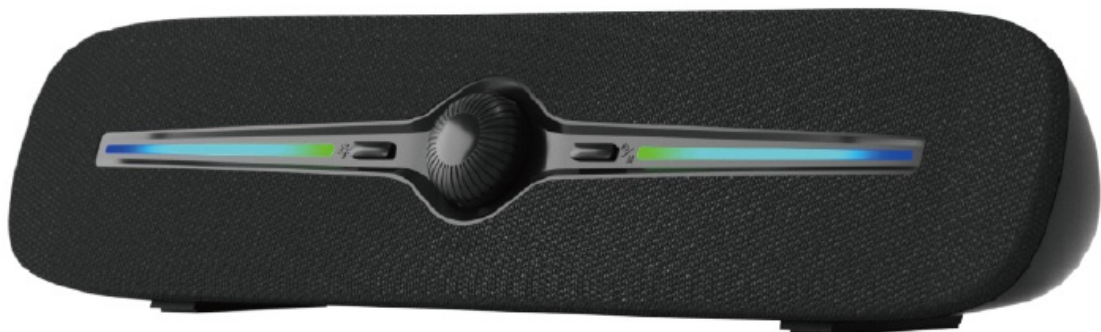


Contents [[hide](#)]

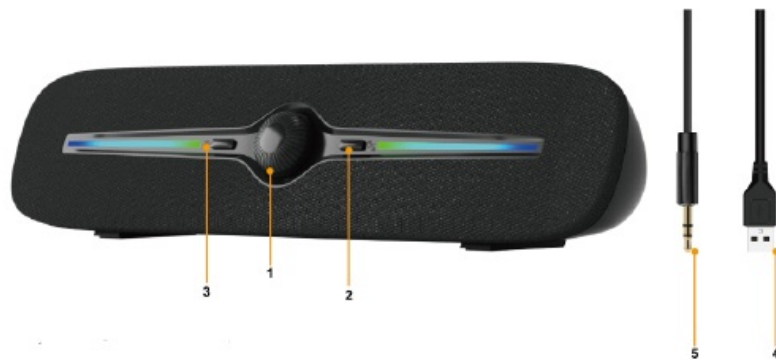
- [1 SOULION R90 Bluetooth Computer Speakers for Desktop](#)
- [2 Product Description](#)
- [3 How to Set Up](#)
- [4 Bluetooth Mode](#)
- [5 SPECIFICATION](#)
- [6 Featured Items from SOULION](#)
- [7 Documents / Resources](#)
 - [7.1 References](#)



SOULION R90 Bluetooth Computer Speakers for Desktop



Product Description



1. Rotary Knob:

Volume+/-

2. “M” Button:

1. Click to Switch Aux/Bluetooth Mode

2. Long Press for 3 seconds: Power on/off

3. RGB Light Button

1. Click to switch RGB light mode: Flowing Light, Rhythmic Light, Breathing Light, Optional Monochromatic Light
Turn on/off Light

2. Long Press for 3 seconds: Wipe off & Reset Bluetooth Connection

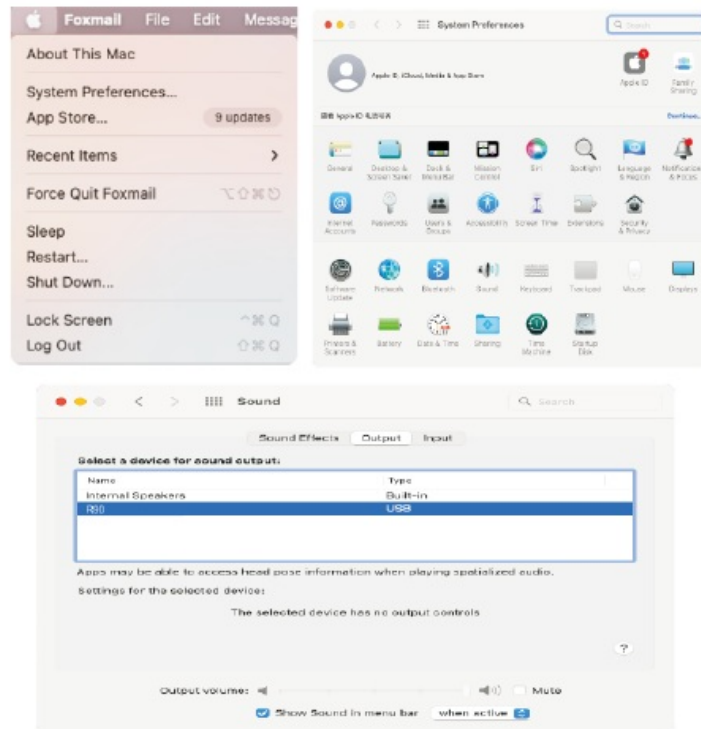
4. USB Powered Cable

5. 3.5mm AUX Cable

How to Set Up

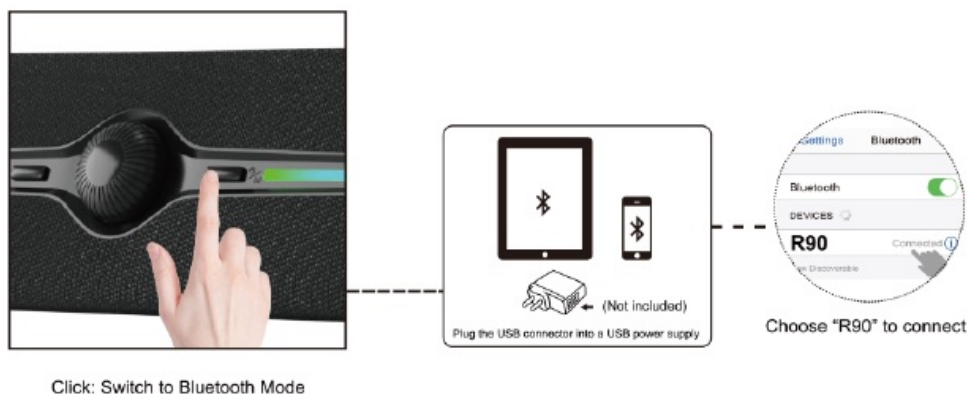
PC, Laptop, MacBook Pro/Air

1. Plug the USB connector into the USB side ports on the computers; Plug the 3.5mm connector audio cable into the headphone jack of the computer.;
2. Click the “Mode” button to switch AUX Mode.
3. Fix the Setting: Control Panel/System Preferences
 1. sound setting – choose “R90” as audio output
 2. Save changes.



Bluetooth Mode

Cellphones, Ipad, Tablet



1. Plug the USB connector into a certified USB power supply (5V/1A);
2. Click the “Mode” button to switch Bluetooth Mode.
3. Turn on Bluetooth on your cell phone, iPad, Tor ablet, search and select the device name “R90”, connect it, and pair.

Note:

1. If R90 were paired with some other devices, and not able to pair now, please press the light button for 3 seconds to wipe off the Bluetooth connection, and pair the R90 with your devices via Bluetooth again.

SPECIFICATION

Audio Input Mode:	AUX/Bluetooth Connection
Bluetooth Version:	V5.3
Bluetooth Working Distance:	≤33ft/10m
Speaker Size:	1.8inches
Speaker Impedance:	4Ω
Input Sensitivity:	90±3db
Frequency Range:	140Hz-18KHz
Power Supply:	USB 5V/1A (Not included)
Unit Dimension:	12.75*2.92*2.93in / 32.38*7.41*7.45cm
Unit Weight:	1.2lb / 546.3g

Customer Service

- MANUFACTURER
- NI NGBO NINHUA SCM CO., LTD
- Add:21 JIANGXIA ST., NI NGBO 315000 P.R. of CHINA
- For warranty claims, contact us at Web: www.soulion.net
- Email: wencyanuket999@hotmail.com
- Email: soulionaftersale@gmail.com
- G) +86-18820971609
- 6 www.facebook.com/Soulion.fans
- ® 66-month Warranty Service
- SOULION OFFICIAL Lifetime Technical Support



Featured Items from SOULION

- **SOULION R30(Gray/White):**
 - [A Great Wired Sound Audio Device As A Loudspeaker] 3.5mm & USB powered
 - Auto Conversion Light Effect



- **SOULION R30 Plus(Gray/White):**

- (All-in-1 Control Button Computer Speakers]
- USB & Bluetooth Mode
- Clearly & Powerful Sound



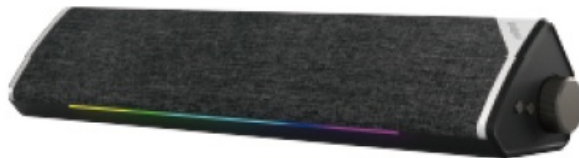
- **SOULION R50:**

- [Surround & Deep Bass Sound Computer Speakers) 3.5mm & USB Powered
- Customize Lighting Effects



- **SOULION R60:**

- [USB Plug-N-Play Balance Sound Computer Speakers]
- USB & Bluetooth Powered .._. Dynamic Lighting Effects



- **SOULION R80:**

- [Surround & Crystal Sound Computer Speakers] USB & Bluetooth Powered
- Customize Lighting Effects




- **SOULION R100:**

- (USB Plug-N-Play Computer Speakers]
- USB & Bluetooth Powered
- Dynamic Lighting Effects



Documents / Resources

	SOULION R90 Bluetooth Computer Speakers for Desktop [pdf] User Manual R90 Bluetooth Computer Speakers for Desktop, R90, Bluetooth Computer Speakers for Desktop, Computer Speakers for Desktop, Speakers for Desktop, for Desktop
---	--

References

- [User Manual](#)

SOULION
Bluetooth Computer Speakers for Desktop, Computer Speakers for Desktop, for Desktop, R90, R90 Bluetooth Computer Speakers for Desktop, SOULION, Speakers for Desktop

Leave a comment

Your email address will not be published. Required fields are marked *

Comment *

Name

Email

Website

☐ Save my name, email, and website in this browser for the next time I comment.

Post Comment

Search:

e.g. whirlpool wrf535swhz

Search

[Manuals+](#) | [Upload](#) | [Deep Search](#) | [Privacy Policy](#) | [@manuals.plus](#) | [YouTube](#)

This website is an independent publication and is neither affiliated with nor endorsed by any of the trademark owners. The "Bluetooth®" word mark and logos are registered trademarks owned by Bluetooth SIG, Inc. The "Wi-Fi®" word mark and logos are registered trademarks owned by the Wi-Fi Alliance. Any use of these marks on this website does not imply any affiliation with or endorsement.