

SONY PDT-FP1 Portable Data Transmitter



SONY PDT-FP1 Portable Data Transmitter Instructions

[Home](#) » [Sony](#) » SONY PDT-FP1 Portable Data Transmitter Instructions 

Contents

- [1 SONY PDT-FP1 Portable Data Transmitter](#)
- [2 Product Information](#)
- [3 Product Usage Instructions](#)
- [4 Inserting the SIM card](#)
- [5 POWER ON](#)
- [6 Declaration of Conformity](#)
- [7 Supported frequency bands](#)
- [8 INFORMATION](#)
- [9 FCC Statement](#)
- [10 Instructions to prevent reasonably](#)
- [11 Legal information](#)
- [12 Documents / Resources](#)
 - [12.1 References](#)

SONY®

SONY PDT-FP1 Portable Data Transmitter



Product Information

Specifications:

- **Model:** PDT-FP1
- **SIM:** 1
- **Power:** 2 PWR ON
- **Manufacturer Website:** [Visit here](#)

Product Usage Instructions

Step 1: Inserting the SIM card

Locate the SIM card slot on the device and carefully insert the SIM card as per the provided instructions in the user manual.

Step 2: Power On

Press and hold the power button for a few seconds until the device powers on. Follow any on-screen prompts to complete the setup process.

Frequently Asked Questions (FAQ)

• Q: How do I charge the device?

A: To charge the device, use the provided charging cable and connect it to a power source. Make sure to use a compatible charger to avoid any damage to the device.

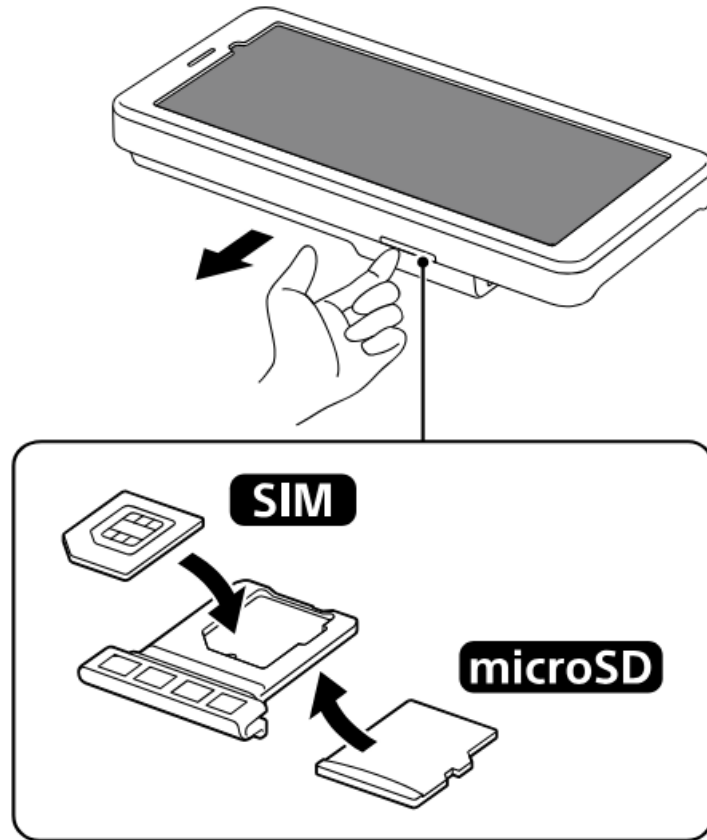
• Q: Can I expand the storage capacity?

A: Some devices allow for expandable storage via microSD cards. Refer to the user manual or manufacturer's website for compatibility and instructions on expanding storage.

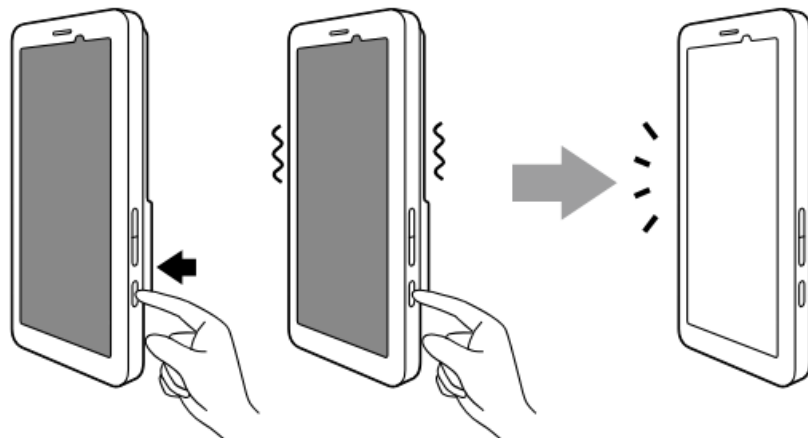
- **Q: How do I reset the device?**

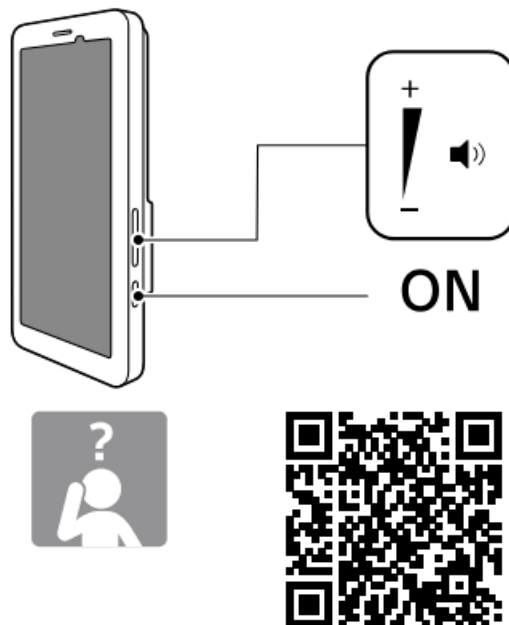
A: To reset the device, locate the reset button (if available) or perform a factory reset through the device settings. Note that a factory reset will erase all data on the device, so ensure to back up important information before proceeding.

Inserting the SIM card



POWER ON





https://rd1.sony.net/help/mobile/pdt-fp1/h_zz/

Declaration of Conformity

Hereby, Sony Corporation declares that this equipment is in compliance with Directive 2014/53/EU. The full text of the EU declaration of conformity is available at the following internet address: <https://compliance.sony.eu>

UK Declaration of Conformity

PDT-FP1 (PM-1470-BV)

Hereby, Sony Corporation declares that this equipment is in compliance with the relevant statutory requirements. The full text of the declaration of conformity is available at the following internet address:

<https://compliance.sony.co.uk>

Notice for customers: the following information is only applicable to equipment sold in the United Kingdom
This product has been manufactured by or on behalf of Sony Corporation

UK Importer: Sony Europe B.V.

Inquiries to the UK Importer or related to product compliance in the UK should be sent to the manufacturer's authorized representative, Sony Europe B.V., The Heights, Brooklands, Weybridge, Surrey KT13 0XW, United Kingdom.

Supported frequency bands

PDT-FP1

5GNR (Bands n1, n2, n3, n5, n7, n8, n20, n25, n28, n30, n38, n40, n41, n48, n66, n71, n77, n78, n79, n257, n258, n260, n261), LTE (Bands 1, 2, 3, 4, 5, 7, 8, 11, 12, 13, 17, 18, 19, 20, 21, 25, 26, 28, 29, 30, 32, 34, 38, 39, 40, 41, 42, 46, 48, 66, 71), Bluetooth® (2.4GHz), WLAN (2.4GHz/5GHz/6GHz)

- **5GNR:** 26dBm(n77/n78/n79)/
- **23dBm(Others), LTE:** 23dBm,
- **Bluetooth:** <10mW,
 - WLAN(2.4GHz): <100mW,
 - WLAN(5.15-5.35GHz, 5.47-5.725GHz): <100mW,
 - WLAN (5.735-5.835GHz): <25mW,
 - WLAN (5.945-6.425GHz): LPI <200mW, VLP <25mW

Supported frequency bands

Some frequency bands might be turned off in certain markets or by certain operators. You can find your model number under Settings > About device.

Restrictions in the 5 GHz and 6 GHz bands

For this radio equipment, the following restrictions on putting into service or of requirements for authorization of use apply in BE, BG, CZ, DK, DE, EE, IE, EL, ES, FR, HR, IT, CY, LV, LT, LU, HU, MT, NL, AT, PL, PT, RO, SI, SK, FI, SE, UK, UK(NI), IS, LI, NO and CH: There are restrictions on use that limit operation in the Wireless LAN 5 GHz and 6 GHz bands to indoor or limited outdoor use. This device is configured to comply with these restrictions.

Specific Absorption Rate (SAR) Information for CE Marking

The International Commission on Non-Ionizing Radiation Protection (ICNIRP) specifies a SAR limit of 2 W/kg averaged over ten (10) grams of body tissue. For body-worn operation, the device has been tested when positioned a minimum of 5 mm from the body without any metal parts in the vicinity of the device or when properly used with an appropriate accessory and worn on the body. For more information about SAR, find and tap Settings > About device > Legal information > Important information on your device.

INFORMATION



Information on charging specifications

The power delivered by the charger must be between min 2.5 Watts required by the radio equipment, and max 30 Watts (USB Type-C® terminal (Data transfer)) / 27 Watts (USB Type-C terminal (CHARGE)) in order to achieve the maximum charging speed.

Information on fast charging specifications

- USB PD fast charging

FCC Statement

This device complies with Part 15 of the FCC rules. Operation is subject to the following two conditions: (1) This device may not cause harmful interference, and (2) This device must accept any interference received, including interference that may cause undesired operation. For additional information, please read the FCC Statement provided under Settings > About device > Legal information > Important information > Statements on your device.

Specific Absorption Rate (SAR) Information for FCC

In the United States, the SAR limit for portable devices used by the public is 1.6 watts/kilogram (W/kg) averaged over one gram of tissue. For body-worn operation, the device has been tested when positioned a minimum of 5 mm from the body without any metal parts in the vicinity of the device or when properly used with an appropriate accessory and worn on the body. For devices which include “Wi-Fi hotspot” functionality, SAR measurements for the device operating in Wi-Fi hotspot mode were taken using a separation distance of 5 mm. Use of third-party accessories may result in different SAR levels than those reported.

For Customer in the U.S.A.

Operation of transmitters in the 5.925-7.125 GHz band is prohibited for control of or communications with unmanned aircraft systems. For question regarding your product or for the Sony Service Center nearest you, call 1-800-222-7669 (SONY).

Supplier's Declaration of Conformity

Trade Name: SONY

Model: PDT-FP1

Responsible Party: Sony Electronics Inc.

Address: 16535 Via Esprillo, San Diego, CA 92127 U.S.A.

Telephone Number: 858-942-2230

To view the regulatory compliance mark

- Find and tap Settings > About device > Certificates.

A regulatory compliance mark such as an FCC ID is displayed on the screen.

This device does not support telephone calls.



High-temperature warning

This mark is displayed when the surface temperature of the product rises during use. When the mark is displayed, there is a risk of burns if you continue using the product while holding it in your hands. In this case, do not continuously hold your device directly in your hand during use.



Loudness warning

To prevent possible hearing damage, do not listen at high volume levels for long periods.

Instructions to prevent reasonably

Foreseeable mishandling of the battery

- This product has a built-in lithium-ion battery.
- Do not expose this product, including the battery, to excessive heat, fire, etc., for an extended period of time.
- Do not subject this product, including the battery, to extreme low-temperature conditions that may result in overheating and thermal runaway.
- Disposing of the battery into fire or a hot oven or mechanically crushing or cutting the battery can result in an explosion.
- Leaving the battery in an extremely high-temperature surrounding environment can result in an explosion or the leakage of flammable liquid or gas.
- Subjecting the battery to extremely low air pressure may result in an explosion or the leakage of flammable liquid or gas.
- The battery must be charged before use.
- Always use the Sony-branded charger and USB cable.
- Refer to the manufacturer's instructions or equipment manual for proper charging instructions.
- After extended periods of storage, it may be necessary to charge and discharge the battery several times to obtain maximum performance.

To turn the internet connection or the Bluetooth function on or off

Swipe down twice from the top of the screen to open the Quick settings panel.

- To turn the mobile data connection on or off, find and tap [Internet], and then tap the mobile data switch.
- To turn the Wi-Fi® connection on or off, find and tap [Internet], and then tap the [Wi-Fi] switch.

- To turn the Bluetooth function on or off, find and tap [Bluetooth].

To view the specification information

Scan the 2D code in this Startup guide to open the Help Guide in your language, and then navigate the links.

Legal information

This Startup guide is published by Sony Corporation or its local affiliated company, without any warranty. Improvements and changes to this Startup guide necessitated by typographical errors, inaccuracies of current information, or improvements to programs and/or equipment, may be made by Sony Corporation at any time and without notice. Such changes will, however, be incorporated into new editions of this Startup guide. All illustrations are for illustration only and may not accurately depict the actual device.

Trademarks

USB Type-C® and USB-C® are registered trademarks of USB Implementers Forum.

All product and company names mentioned herein are the trademarks or registered trademarks of their respective owners. Any rights not expressly granted herein are reserved. Visit

<https://www.sony.net/Products/smartphones/trademarks-and-copyright.html> for more information.

SAR and usage guidelines

For information about SAR (Specific Absorption Rate) and safety guidelines, please read the Important information provided under Settings > About device > Legal information on your device.

Documents / Resources



[SONY PDT-FP1 Portable Data Transmitter](#) [pdf] Instructions

PDT-FP1, PDT-FP1 Portable Data Transmitter, Portable Data Transmitter, Data Transmitter, Transmitter

References

- [User Manual](#)

[Manuals+](#), [Privacy Policy](#)

This website is an independent publication and is neither affiliated with nor endorsed by any of the trademark owners. The "Bluetooth®" word mark and logos are registered trademarks owned by Bluetooth SIG, Inc. The "Wi-Fi®" word mark and logos are registered trademarks owned by the Wi-Fi Alliance. Any use of these marks on this website does not imply any affiliation with or endorsement.