

SONY MHC-V42D High Power Audio System with BLUETOOTH Instruction Manual

[Home](#) » [Sony](#) » SONY MHC-V42D High Power Audio System with BLUETOOTH Instruction Manual 

Contents

- [1 SONY MHC-V42D High Power Audio System with BLUETOOTH](#)
- [2 MHC-V42D](#)
 - [2.1 SIDE PANEL \(L\), \(R\)](#)
 - [2.2 TOP PANEL SECTION](#)
- [3 LOADING PANEL SECTION](#)
- [4 MHC-V42D](#)
 - [4.1 REAR PANEL SECTION](#)
 - [4.2 CHASSIS SECTION](#)
 - [4.3 MHC-V42D FRONT PANEL SECTION](#)
- [5 SPEAKER CABINET SECTION](#)
- [6 CDM SECTION](#)
- [7 DVD MECHANISM SECTION CDM90-DVBU204//C](#)
- [8 Documents / Resources](#)
- [9 Related Posts](#)

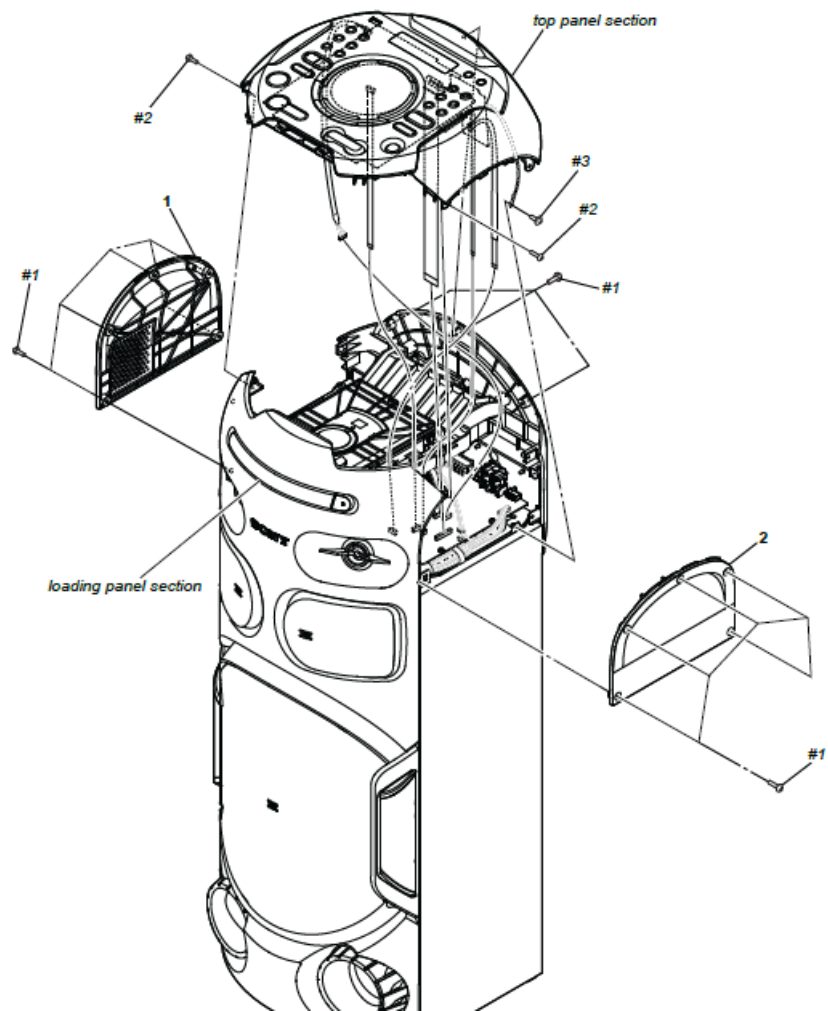
SONY®

SONY MHC-V42D High Power Audio System with BLUETOOTH

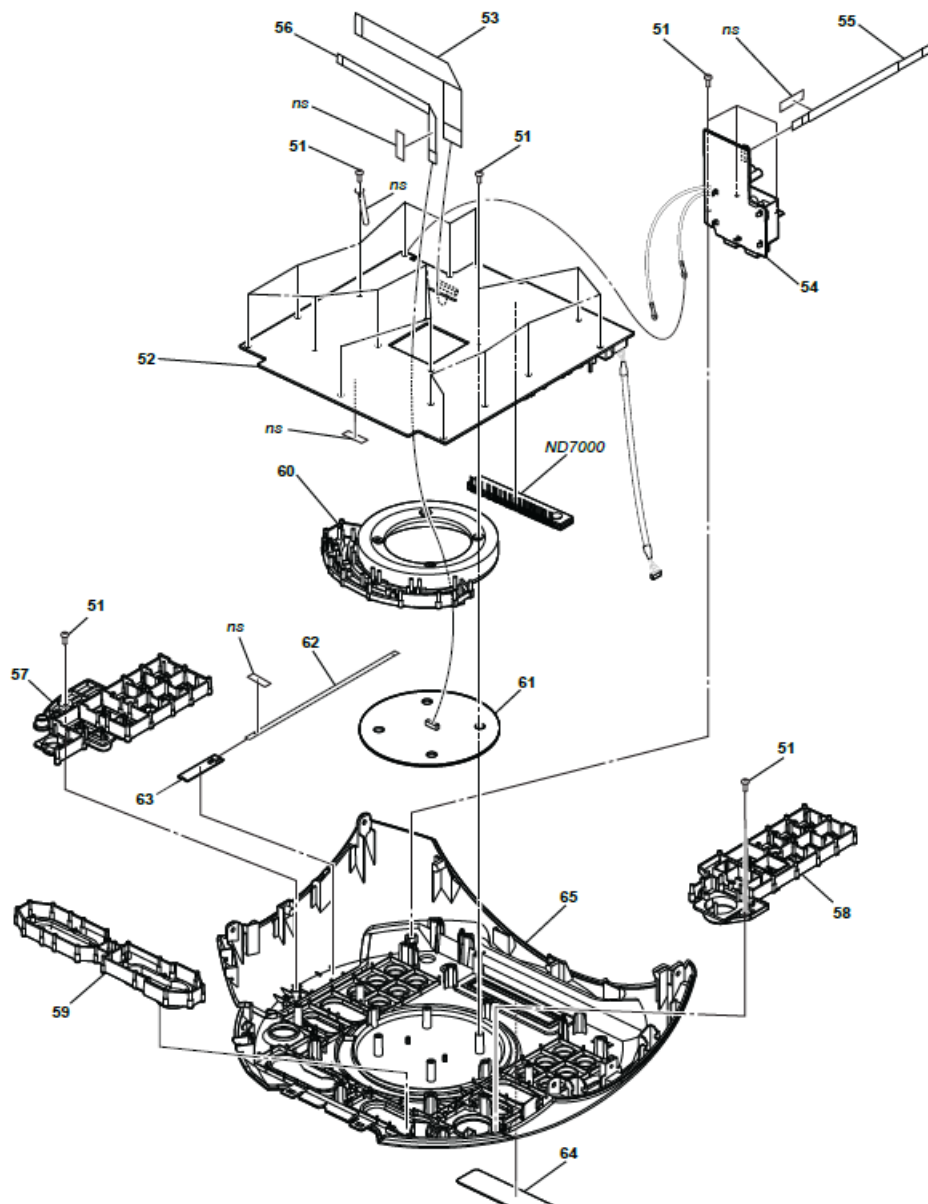
**Note**

XX and X mean standardized parts, so they may have some difference from the original one. Items marked are not stocked since they are seldom required for routine service. Some delay should be anticipated when ordering these items. The mechanical parts with no reference number in the exploded views are not supplied. Color Indication of Appearance Parts Example: KNOB, BALANCE. The components identified by mark 0 or dotted line with mark 0 are critical for safety. Replace only with part number specified. The components identified by mark 9 contain confidential information. Strictly follow the instructions whenever the components are repaired and/or replaced.

MHC-V42D**SIDE PANEL (L), (R)**



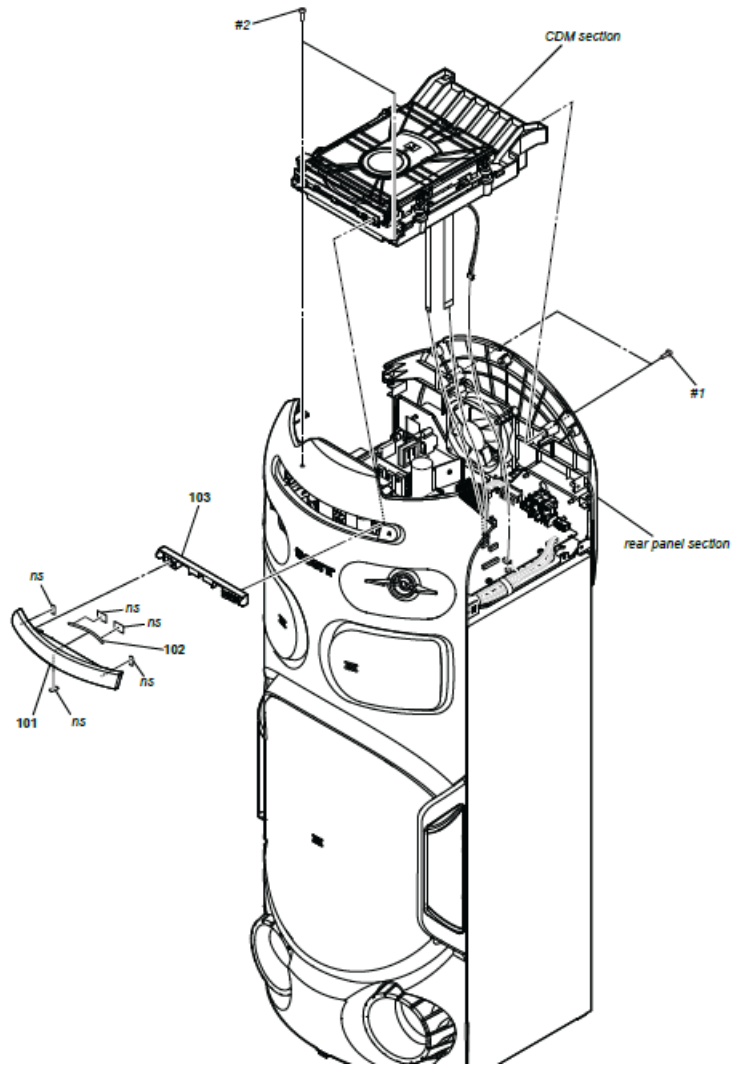
TOP PANEL SECTION



Note

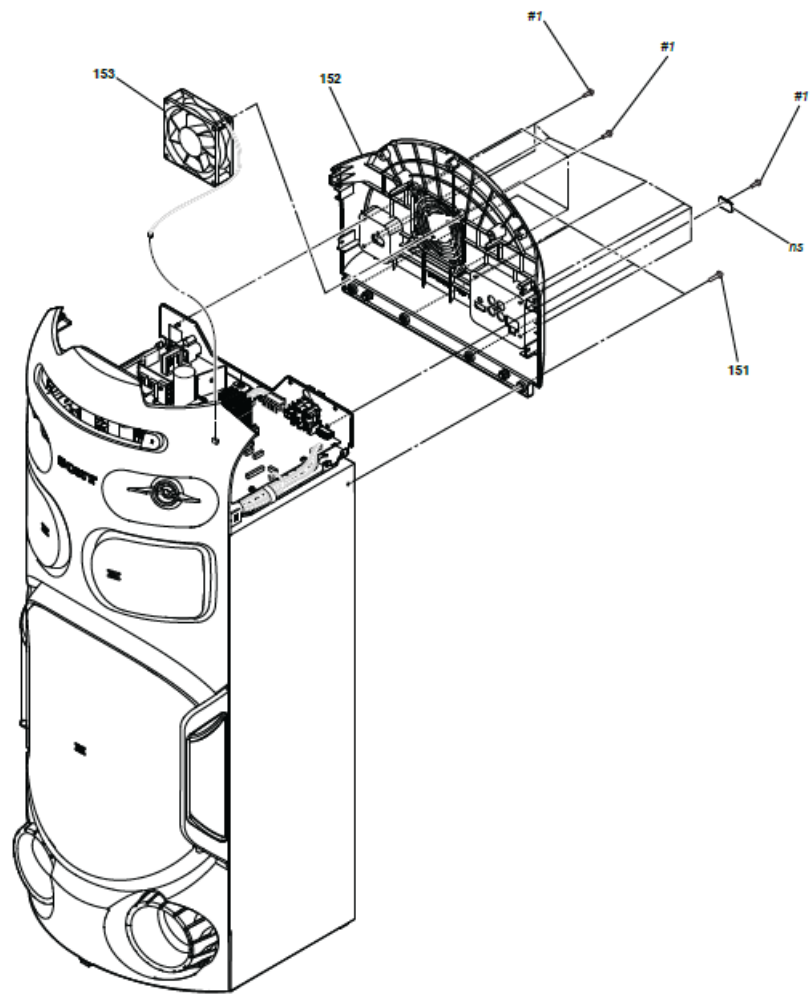
If flexible flat cable is replaced, install it after bending it in the same form as that before replacement.

LOADING PANEL SECTION

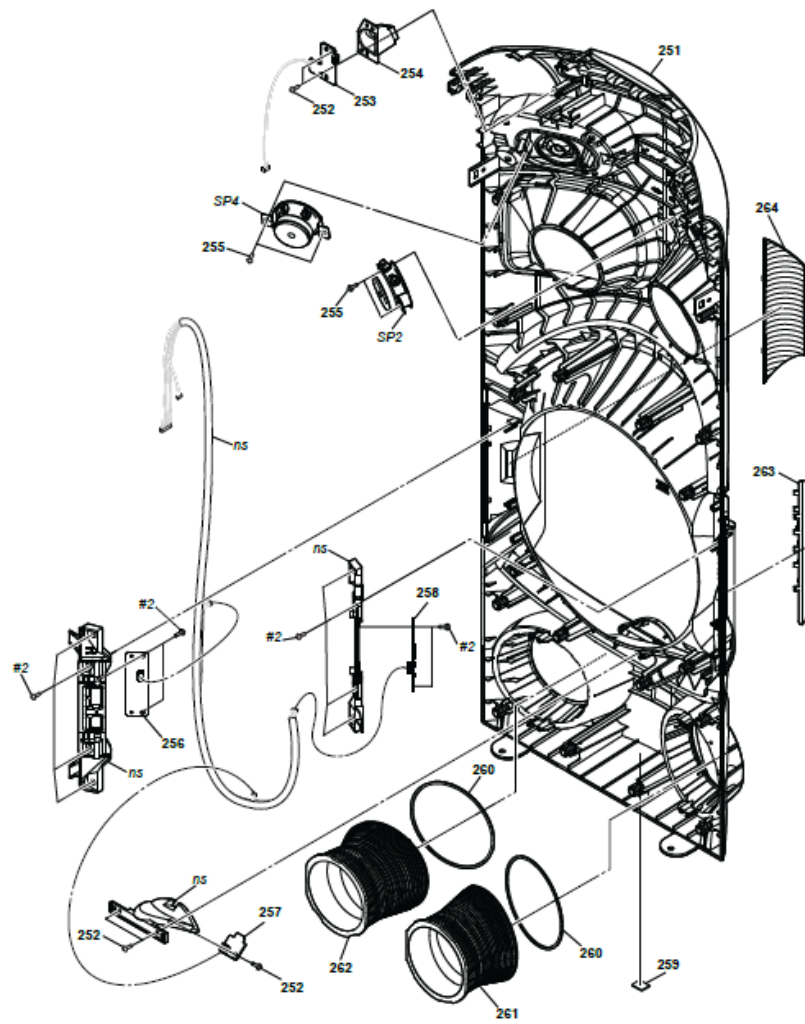


MHC-V42D

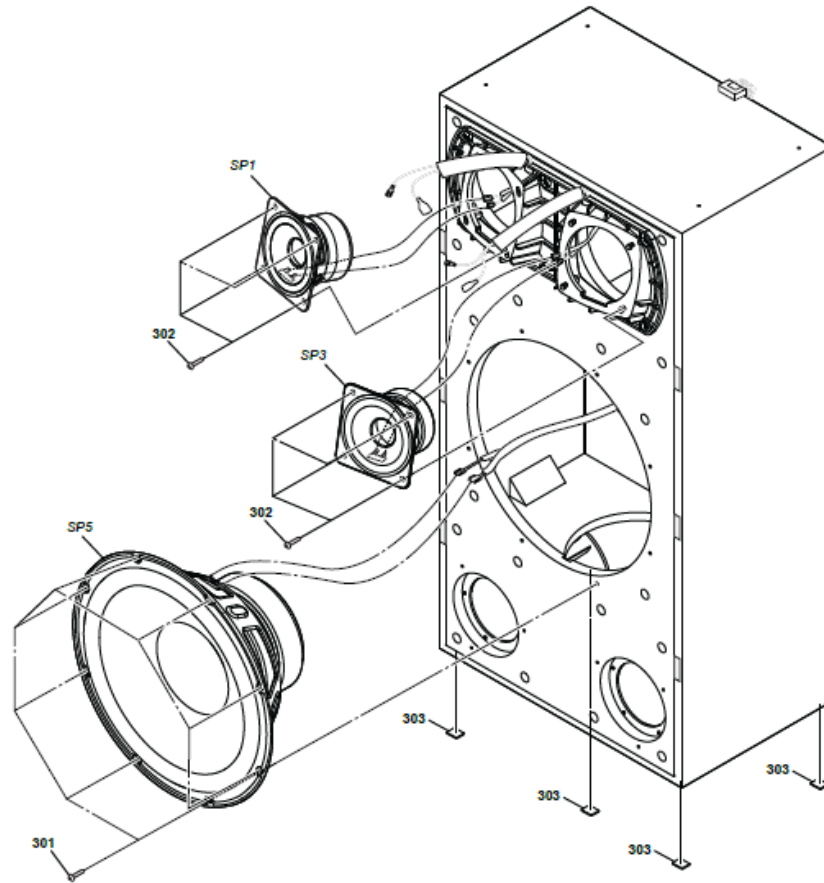
REAR PANEL SECTION



CHASSIS SECTION



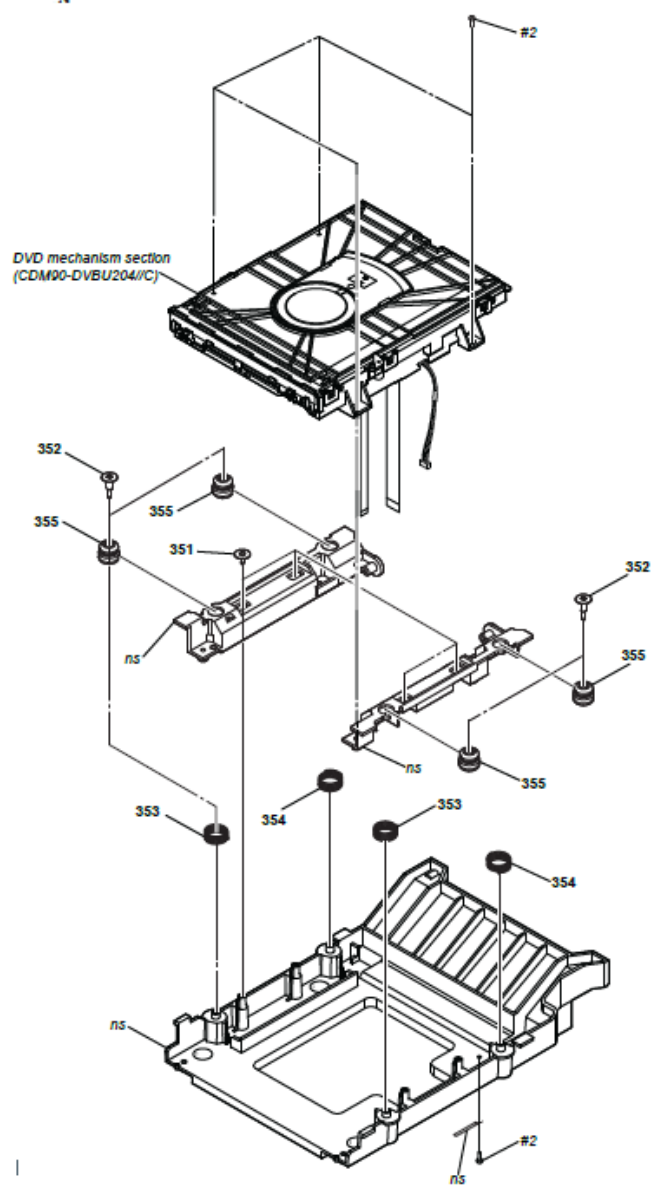
SPEAKER CABINET SECTION



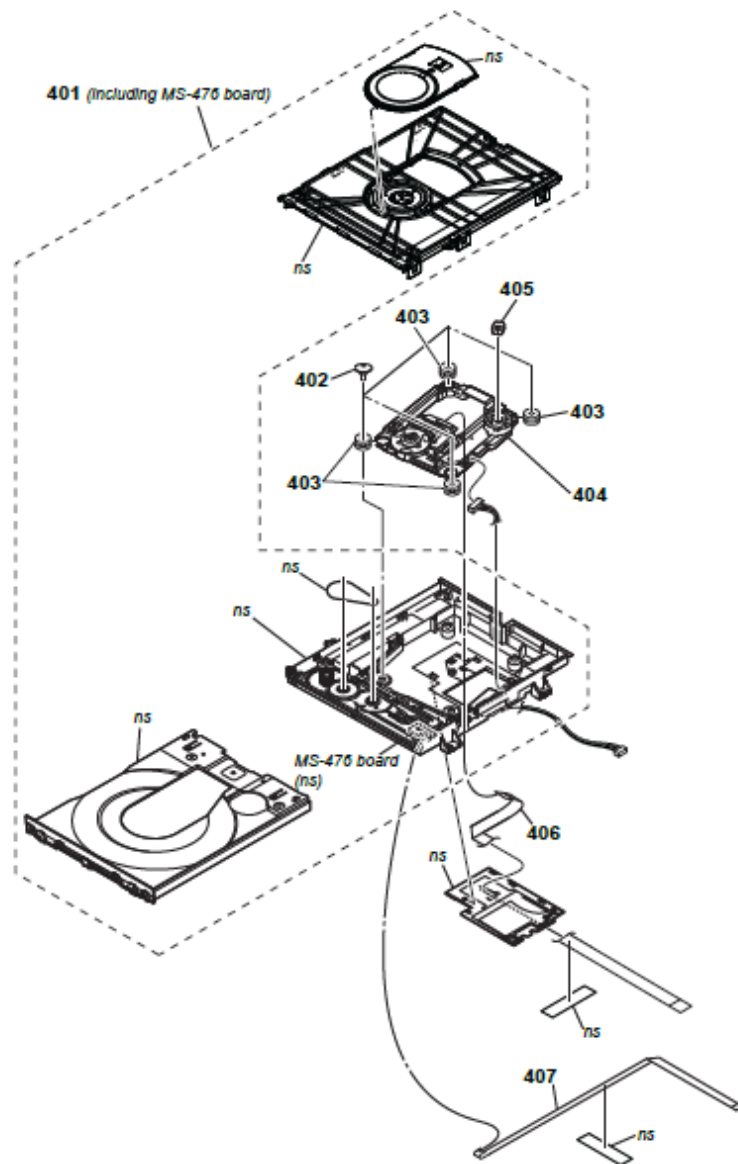
Note

If flexible flat cable is replaced, install it after bending it in the same form as that before replacement.

CDM SECTION




DVD MECHANISM SECTION CDM90-DVBU204//C



Note

If flexible flat cable is replaced, install it after bending it in the same form as that before replacement.

Documents / Resources

	<p>SONY MHC-V42D High Power Audio System with BLUETOOTH [pdf] Instruction Manual MHC-V42D High Power Audio System with BLUETOOTH, MHC-V42D, High Power Audio System with BLUETOOTH, Power Audio System with BLUETOOTH, Audio System with BLUETOOTH, BLUETOOTH</p>
---	---