

SONY CFI-ZPH2 Wireless Headset



SONY CFI-ZPH2 Wireless Headset Instructions

[Home](#) » [Sony](#) » SONY CFI-ZPH2 Wireless Headset Instructions 

Contents

- [1 SONY CFI-ZPH2 Wireless Headset](#)
- [2 INSTALLATION INSTRUCTION](#)
- [3 Product Specifications](#)
- [4 Product Usage Instructions](#)
- [5 Frequently Asked Questions \(FAQ\)](#)
- [6 Documents / Resources](#)
 - [6.1 References](#)
- [7 Related Posts](#)

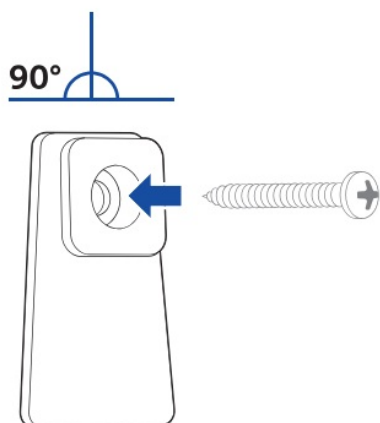


SONY CFI-ZPH2 Wireless Headset

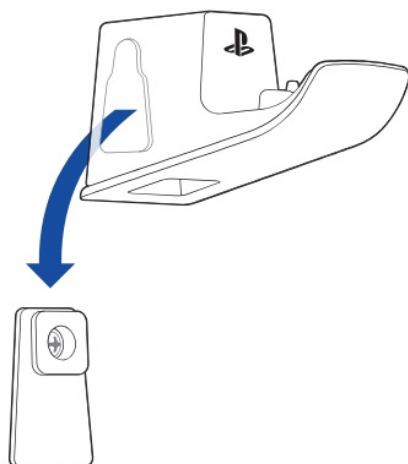


INSTALLATION INSTRUCTION

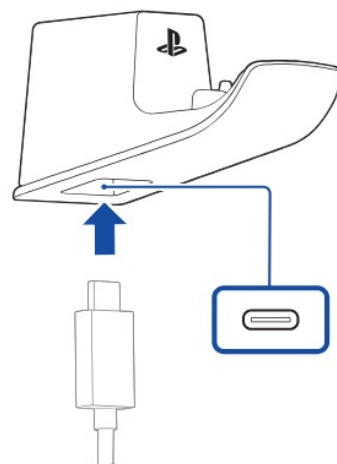
1



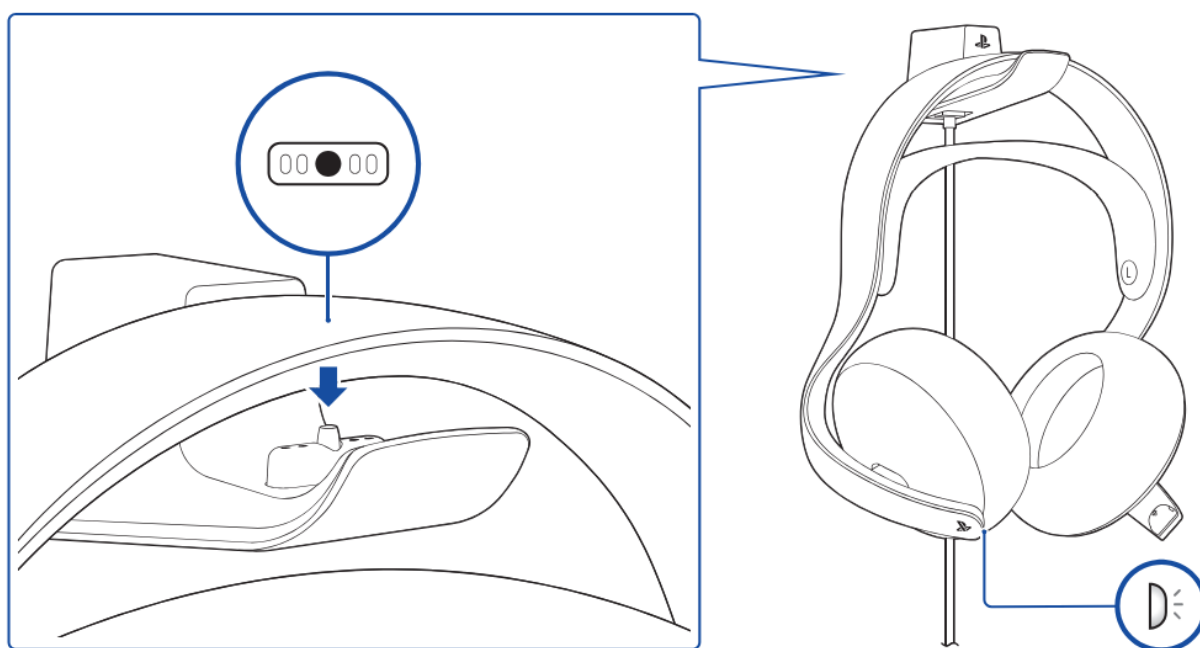
2



3




4





- playstation.com/headset-help



2023 Sony Interactive Entertainment LLC. Printed in China. / © Sony Interactive Entertainment LLC, 2023.

Imprimé en Chine. “” and “PlayStation” are registered trademarks or trademarks of Sony Interactive

Entertainment Inc. “SONY” and “ Sony Interactive Entertainment are registered trademarks or trademarks of Sony Group Corporation. / «» et « PlayStation » sont des marques déposées ou des marques commerciales de Sony

Interactive Entertainment Inc. «SONY»  «) » sont des marques déposées ou des marques commerciales de Sony Group Corporation.

Product Specifications

- **Model Number:** 1000040505
- **Manufacturer:** Sony Interactive Entertainment Inc.
- **Trademark:** PlayStation

Product Usage Instructions

Setup

Follow these steps to set up your product:

1. Unbox the product and check all contents.
2. Connect the device to a power source using the provided cable.
3. Turn on the product by pressing the power button.

Operation

To use the product:

- Follow the on-screen instructions for initial setup.
- Insert a game disc or access digital content through the console.
- Use the controller to navigate menus and play games.

Maintenance

Ensure the product's longevity by:

- Cleaning the exterior with a soft, dry cloth.
- Avoid exposure to extreme temperatures or moisture.
- Keeping the device dust-free for optimal performance.

Frequently Asked Questions (FAQ)

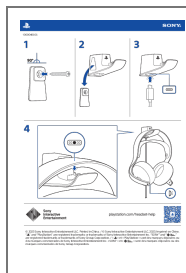
Q: What should I do if my product is not turning on?

A: Make sure the power source is working, and the cables are properly connected, and try pressing the power button again.

Q: Can I use third-party accessories with this product?

A: It is recommended to use official accessories to ensure compatibility and performance.

Documents / Resources



[SONY CFI-ZPH2 Wireless Headset](#) [pdf] Instructions
CFI-ZPH2 Wireless Headset, CFI-ZPH2, Wireless Headset, Headset

References

- [User Manual](#)

[Manuals+](#), [Privacy Policy](#)

This website is an independent publication and is neither affiliated with nor endorsed by any of the trademark owners. The "Bluetooth®" word mark and logos are registered trademarks owned by Bluetooth SIG, Inc. The "Wi-Fi®" word mark and logos are registered trademarks owned by the Wi-Fi Alliance. Any use of these marks on this website does not imply any affiliation with or endorsement.