



SONY CFI-ZPH2 Elite Wireless Headset Instruction Manual

[Home](#) » [Sony](#) » SONY CFI-ZPH2 Elite Wireless Headset Instruction Manual 

SONY CFI-ZPH2 Elite Wireless Headset

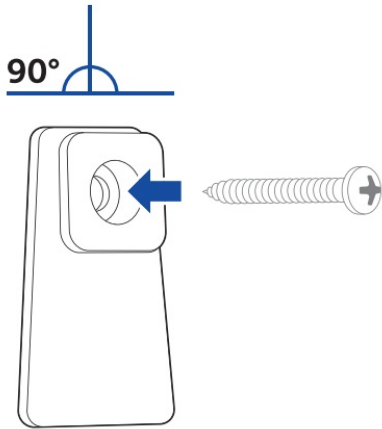


Contents

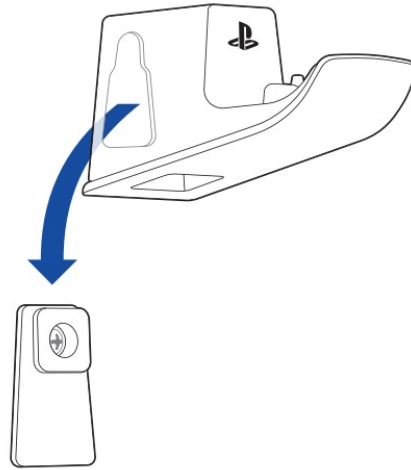
- [1 Installation Instruction](#)
- [2 CUSTOMER SUPPORT](#)
- [3 Documents / Resources](#)
 - [3.1 References](#)
- [4 Related Posts](#)

Installation Instruction

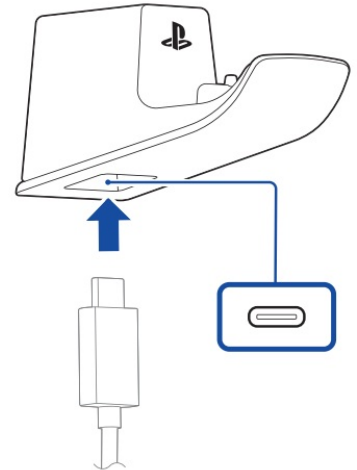
1



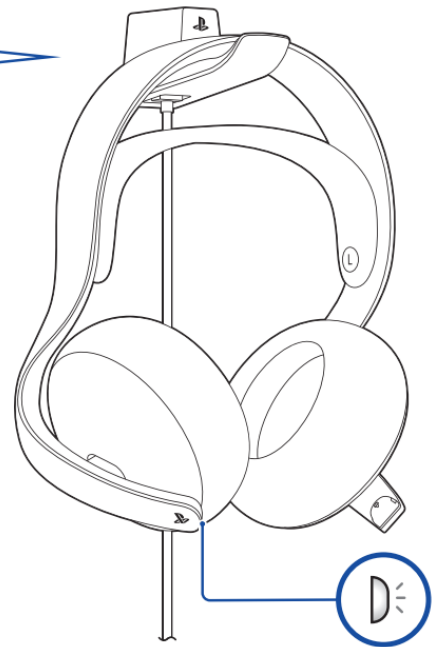
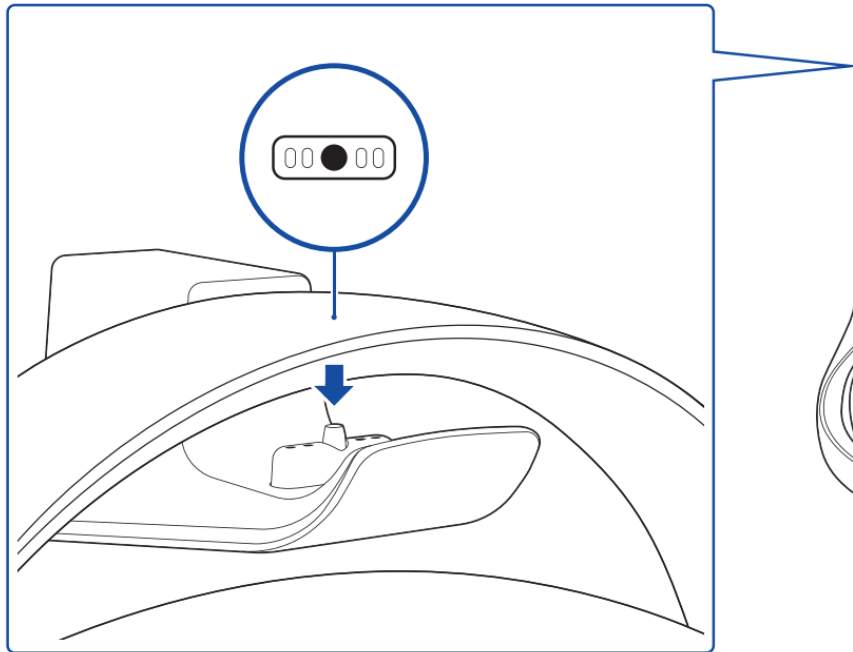
2



3



4



CUSTOMER SUPPORT



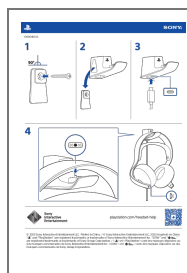
“” and “PlayStation” are registered trademarks or trademarks of Sony Interactive Entertainment Inc. “SONY”
and “”

are registered trademarks or trademarks of Sony Group Corporation. / «  » and « PlayStation » are from the
established brands
of the commercial brands of Sony Interactive Entertainment Inc. « SONY » and «  » are from the established
brands or
commercial brands of Sony Group Corporation.

playstation.com/headset-help



Documents / Resources



[SONY CFI-ZPH2 Elite Wireless Headset](#) [pdf] Instruction Manual

CFI-ZPH2 Elite Wireless Headset, CFI-ZPH2, Elite Wireless Headset, Wireless Headset, Headset

References

- [User Manual](#)

[Manuals+ Privacy Policy](#)

This website is an independent publication and is neither affiliated with nor endorsed by any of the trademark owners. The "Bluetooth®" word mark and logos are registered trademarks owned by Bluetooth SIG, Inc. The "Wi-Fi®" word mark and logos are registered trademarks owned by the Wi-Fi Alliance. Any use of these marks on this website does not imply any affiliation with or endorsement.